



SUPERIOR
Black Lick, Pa.
Mercer, Pa.
Wooster, Oh.
Cleveland, Ok.
Trinidad, Co.

DUAL INDUCTION LOG

Company	XTO Energy Inc.		
Well	Apache Canyon 04-04		
Field	Purgatoire River		
County	Las Animas	State	Colorado
Location:	API # : 05 071 09632 00		Other Services CDL NEUTRON
SEC 04 TWP 34S RGE 67W		Elevation	
Permanent Datum	Ground Level	Elevation	7715'
Log Measured From	Ground Level		
Drilling Measured From	Ground Level	K.B. ----- D.F. ----- G.L. 7715'	
Date	8-10-08		
Run Number	One		
Depth Driller	2340'		
Depth Logger	2340'		
Bottom Logged Interval	2338'		
Top Log Interval	Surface Casing		
Casing Driller	8 5/8" @ 500'		
Casing Logger	500'		
Bit Size	7 7/8"		
Type Fluid in Hole	Water		
Density / Viscosity	///		
pH / Fluid Loss	///		
Source of Sample	///		
Rm @ Meas. Temp	///		
Rmf @ Meas. Temp	///		
Rmc @ Meas. Temp	///		
Source of Rmf / Rmc	///		
Rm @ BHT	///		
Time Circulation Stopped	3:00 P.M.		
Time Logger on Bottom	5:40 P.M.		
Maximum Recorded Temperature	78 DEG F		
Equipment Number	T697		
Location	Trinidad		
Recorded By	J. Cappellucci		
Witnessed By	Mr. Don Johnson		

<<< Fold Here >>>

All interpretations are opinions based on inferences from electrical or other measurements and we cannot and do not guarantee the accuracy or correctness of any interpretation, and we shall not, except in the case of gross or willful negligence on our part, be liable or responsible for any loss, costs, damages, or expenses incurred or sustained by anyone resulting from any interpretation made by any of our officers, agents or employees. These interpretations are also subject to our general terms and conditions set out in our current Price Schedule.

Comments

Well Directions:

First Bosque Entrance to Cherry Canyon, go thru green gate, past Compressor Station 5, stay right at hard switchback, take second left, at Y stay right, follow road down hill, at Y stay left, dead end on location.



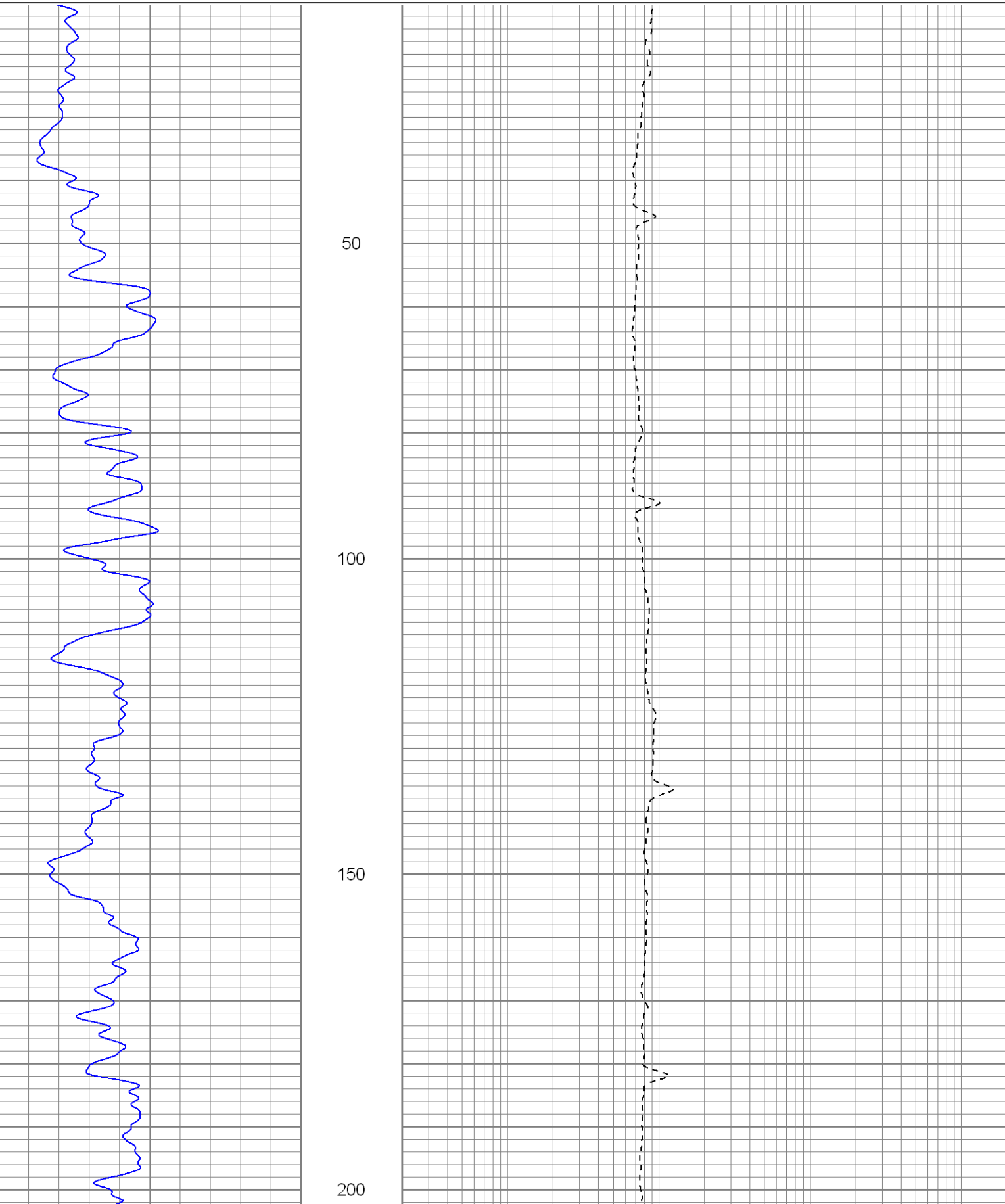
SUPERIOR

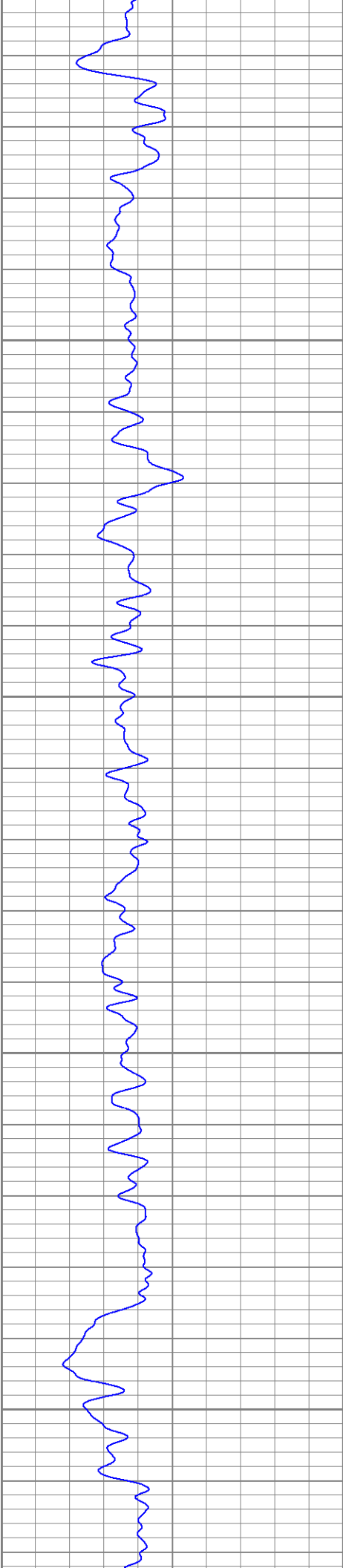
Black Lick, Pa.
Mercer, Pa.
Wooster, Oh.
Cleveland, Ok.
Trinidad, Co.

Main Pass

Database File: xtoac0404.db
Dataset Pathname: pass2.1
Presentation Format: dil2
Dataset Creation: Sun Aug 10 19:57:49 2008 by Calc Open-Cased 071220
Charted by: Depth in Feet scaled 1:240

0	GR (GAPI)	200	0.2	RILM (Ohm-m)	2000
			0.2	RILD (Ohm-m)	2000



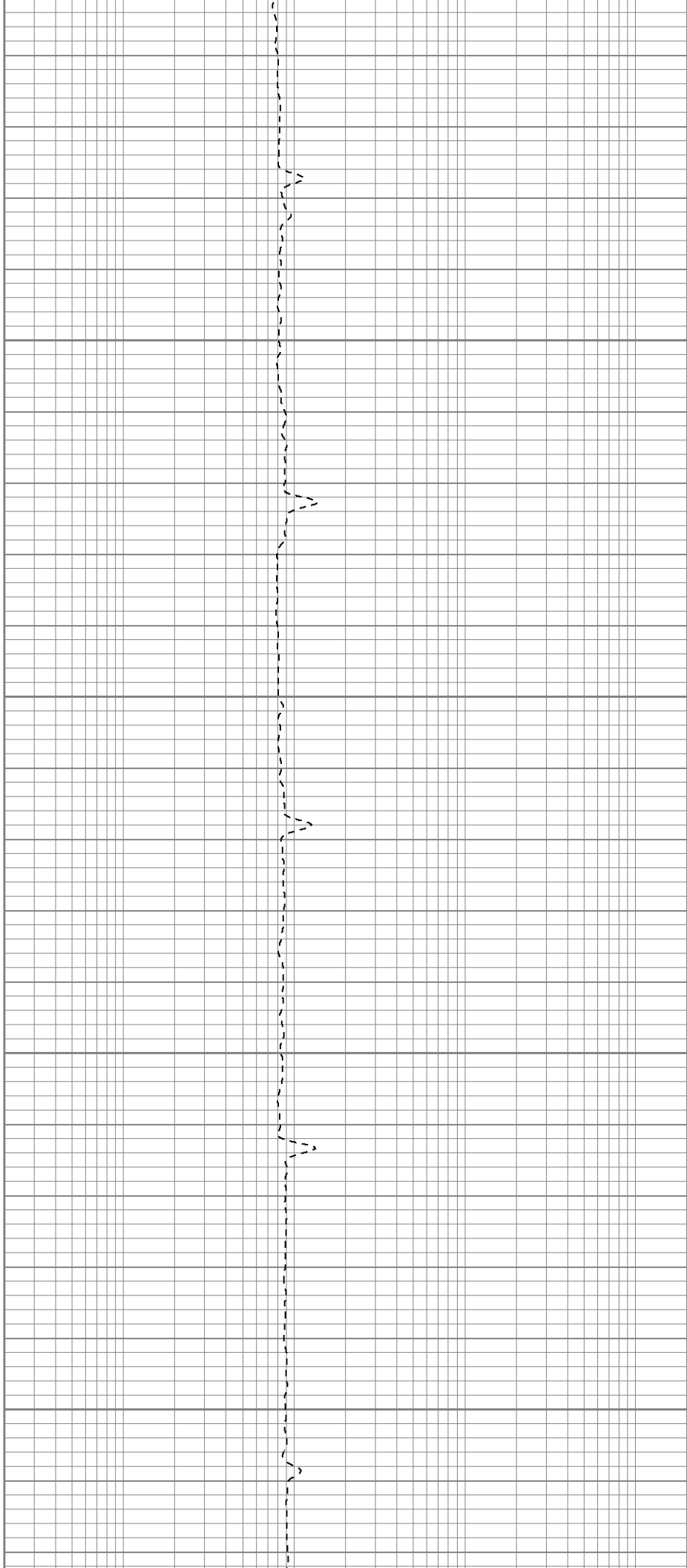


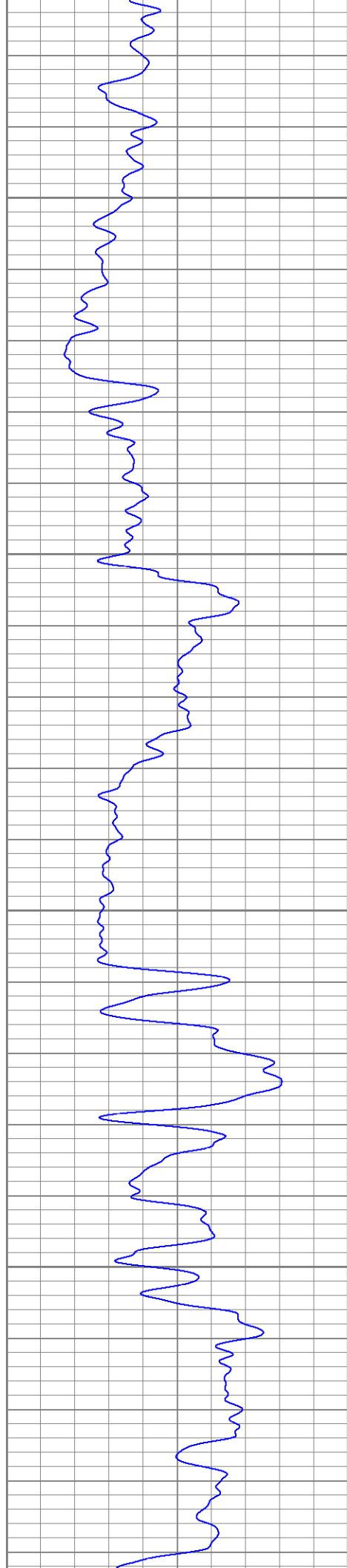
250

300

350

400





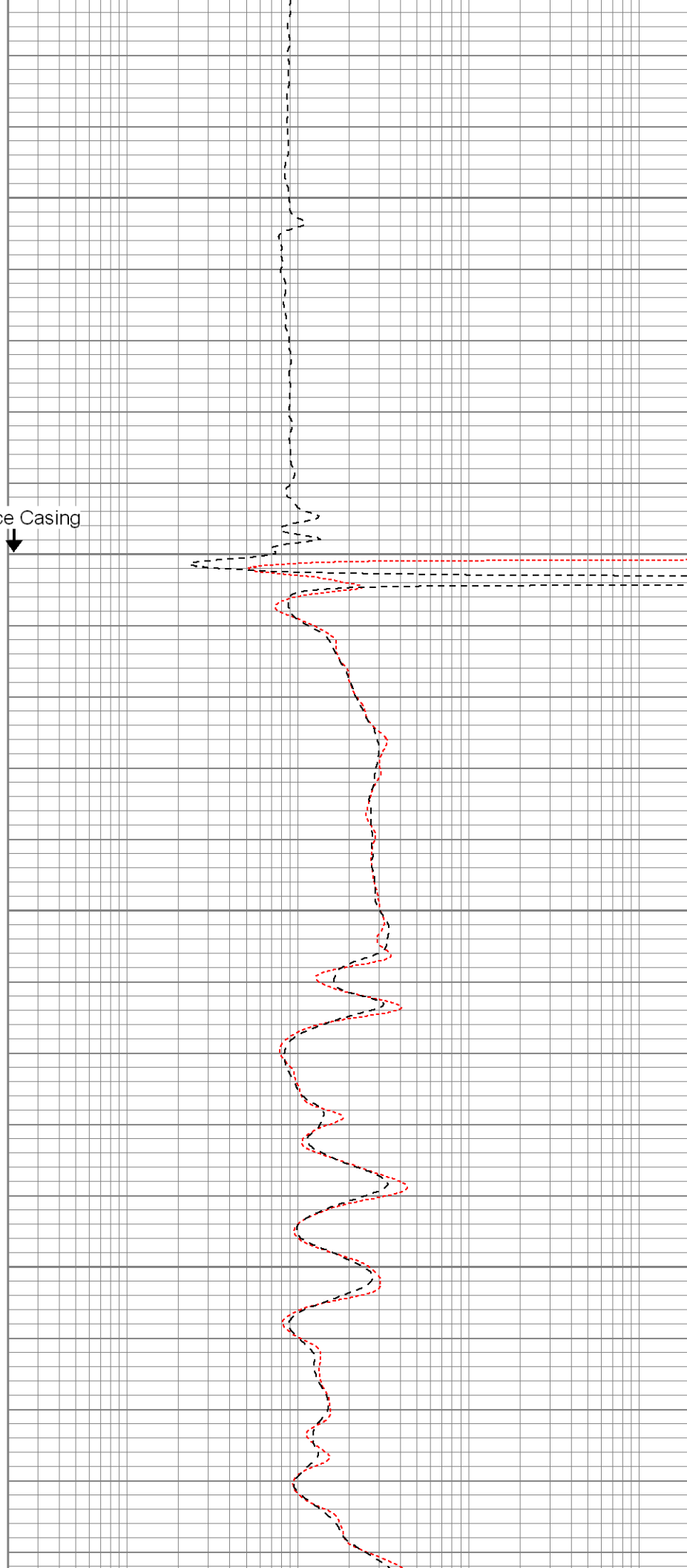
450

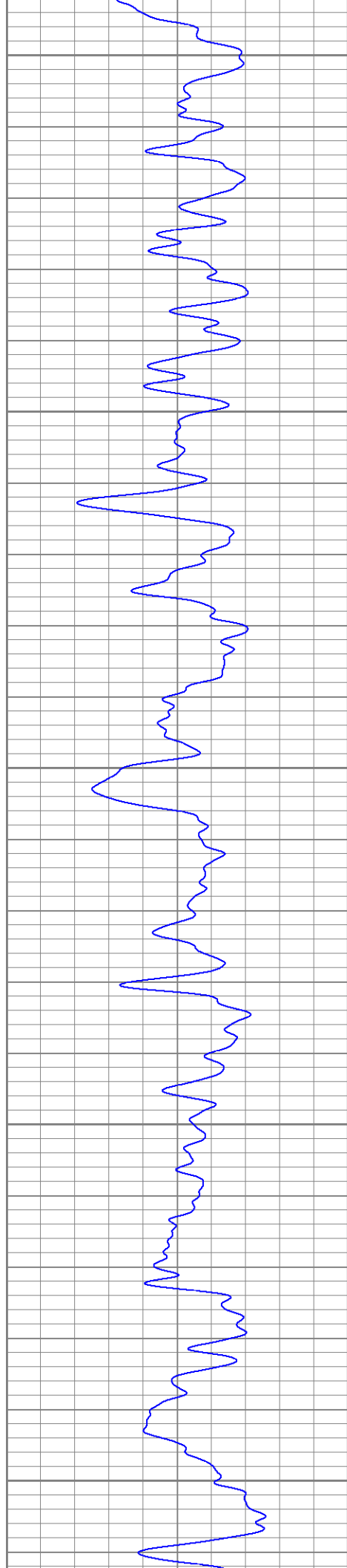
Surface Casing

500

550

600





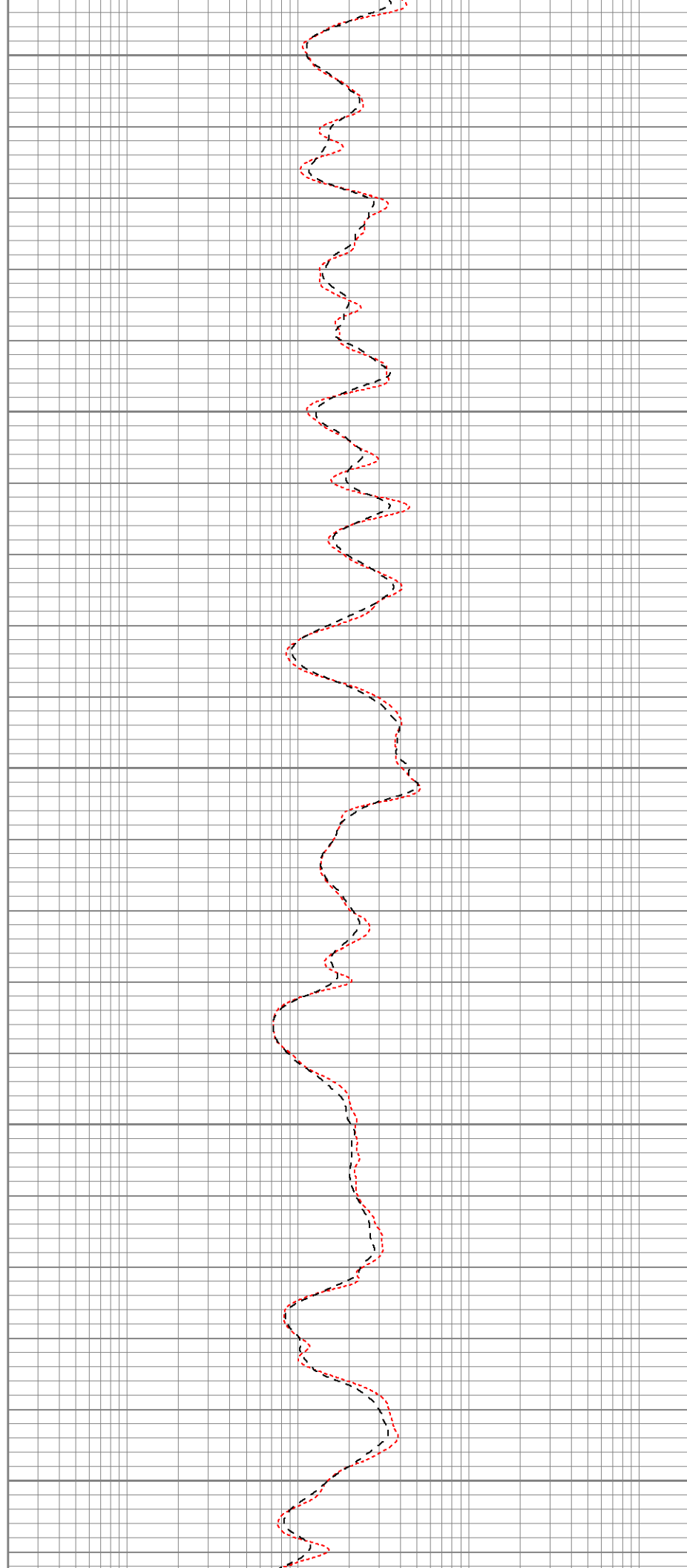
650

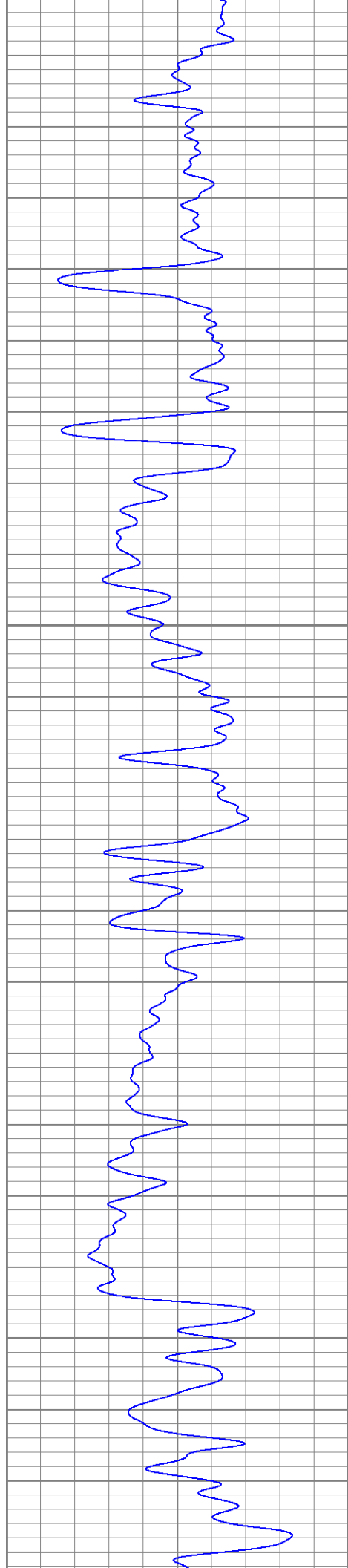
700

750

800

850



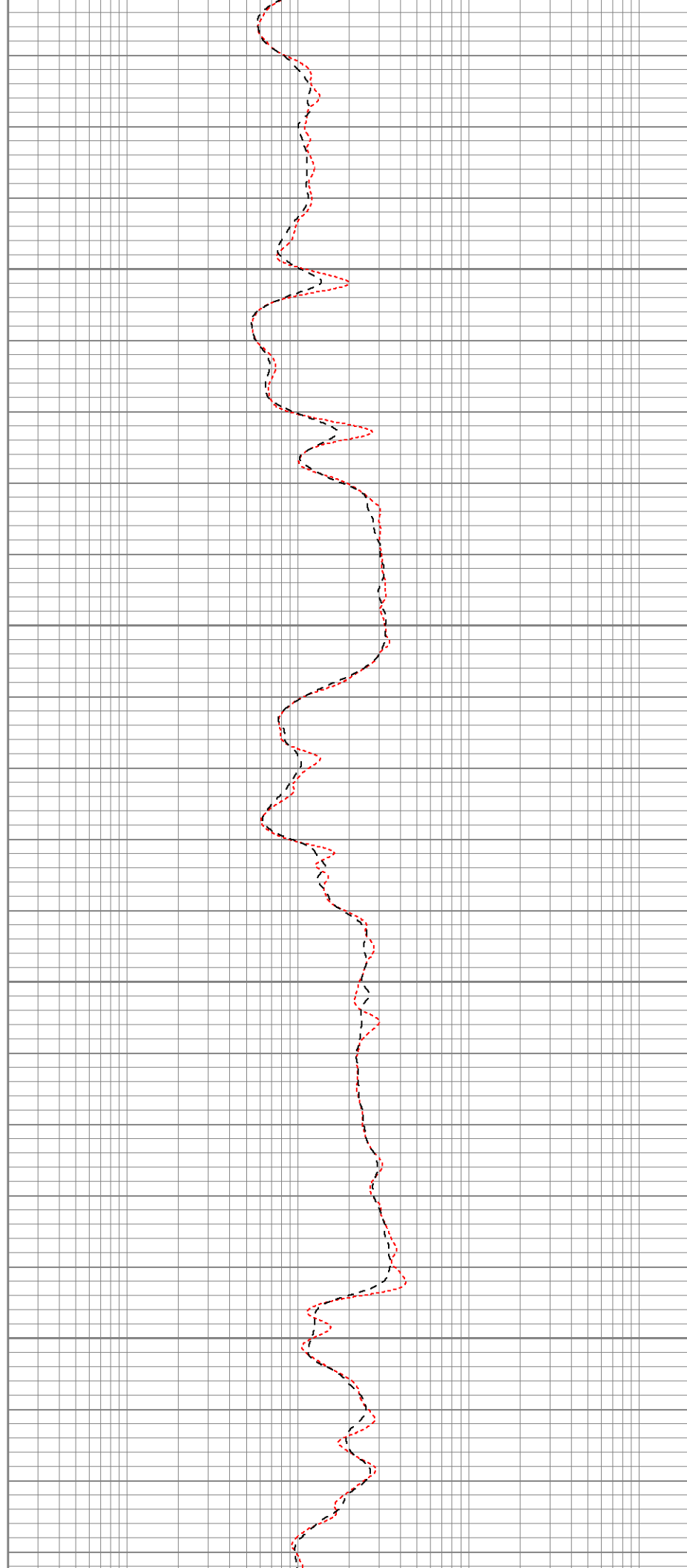


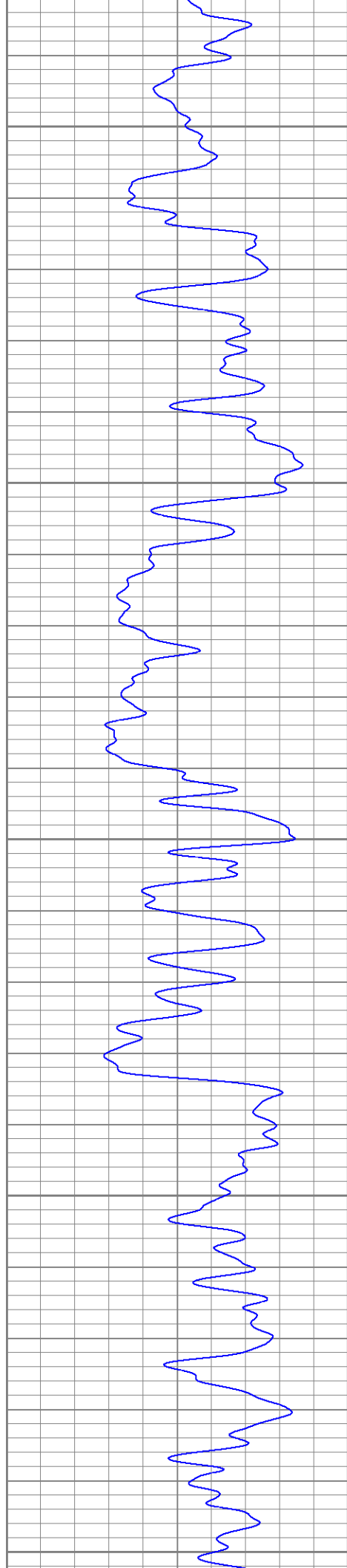
900

950

1000

1050





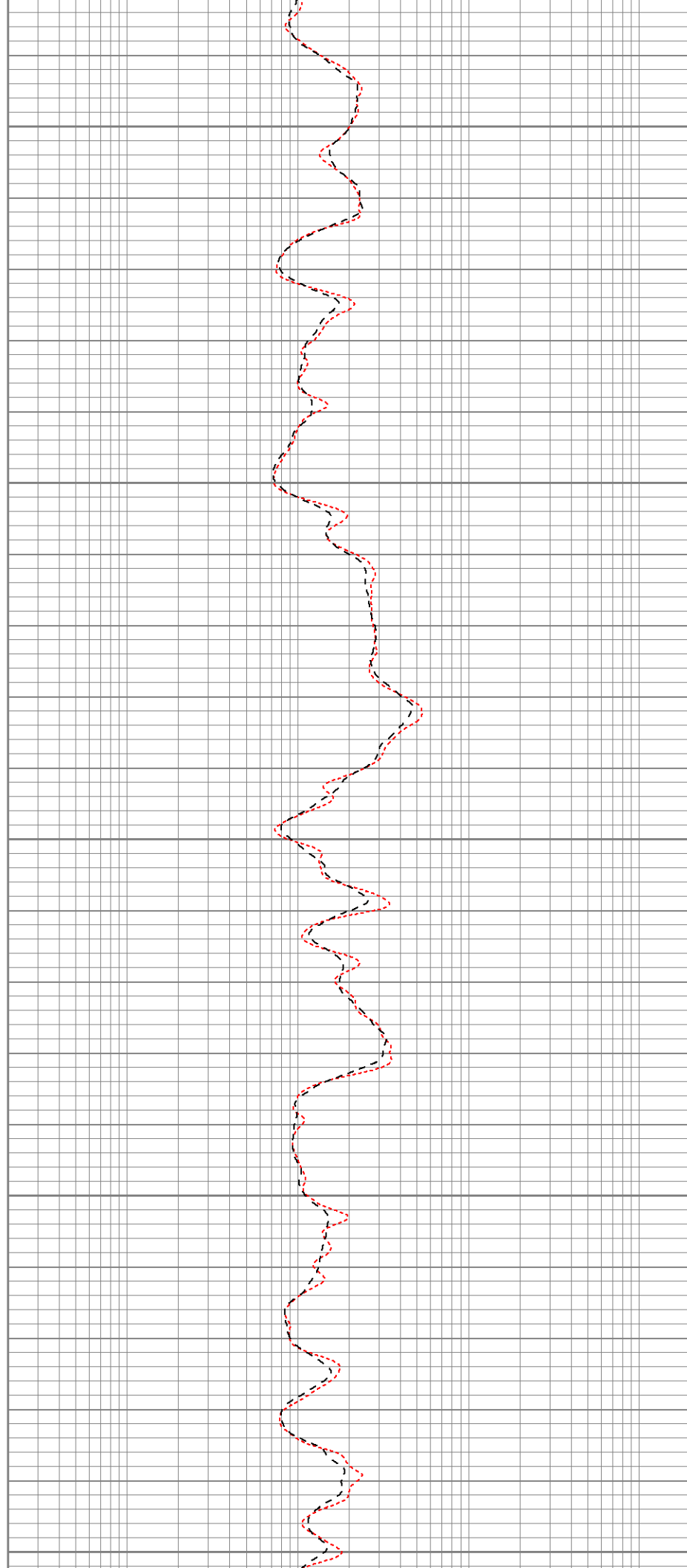
1100

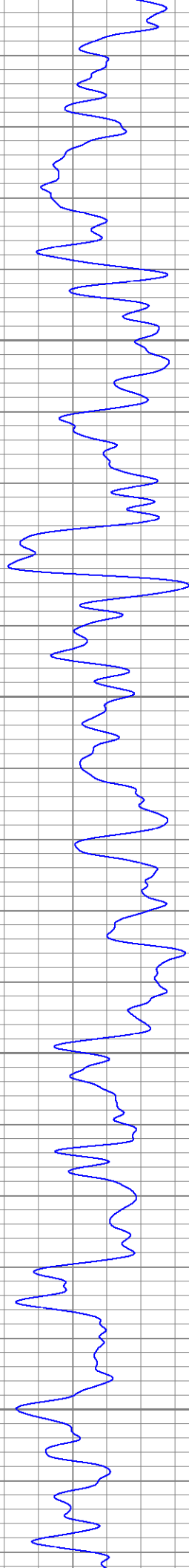
1150

1200

1250

1300



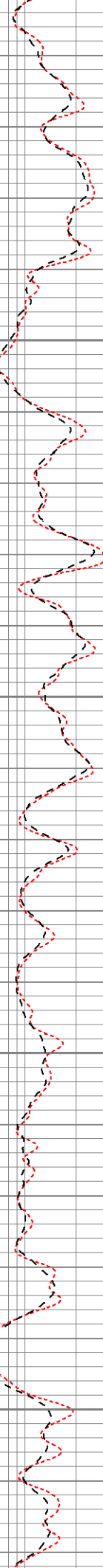


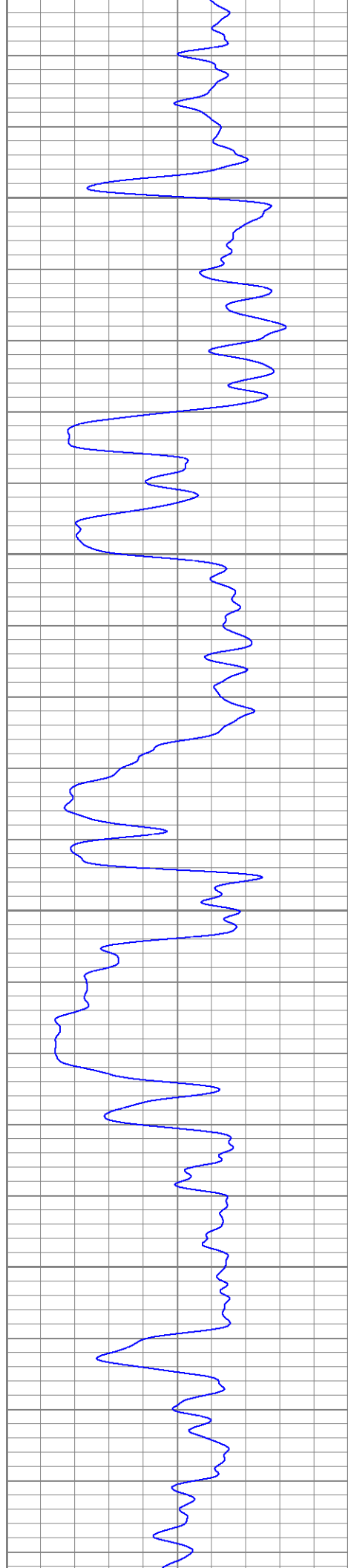
1350

1400

1450

1500



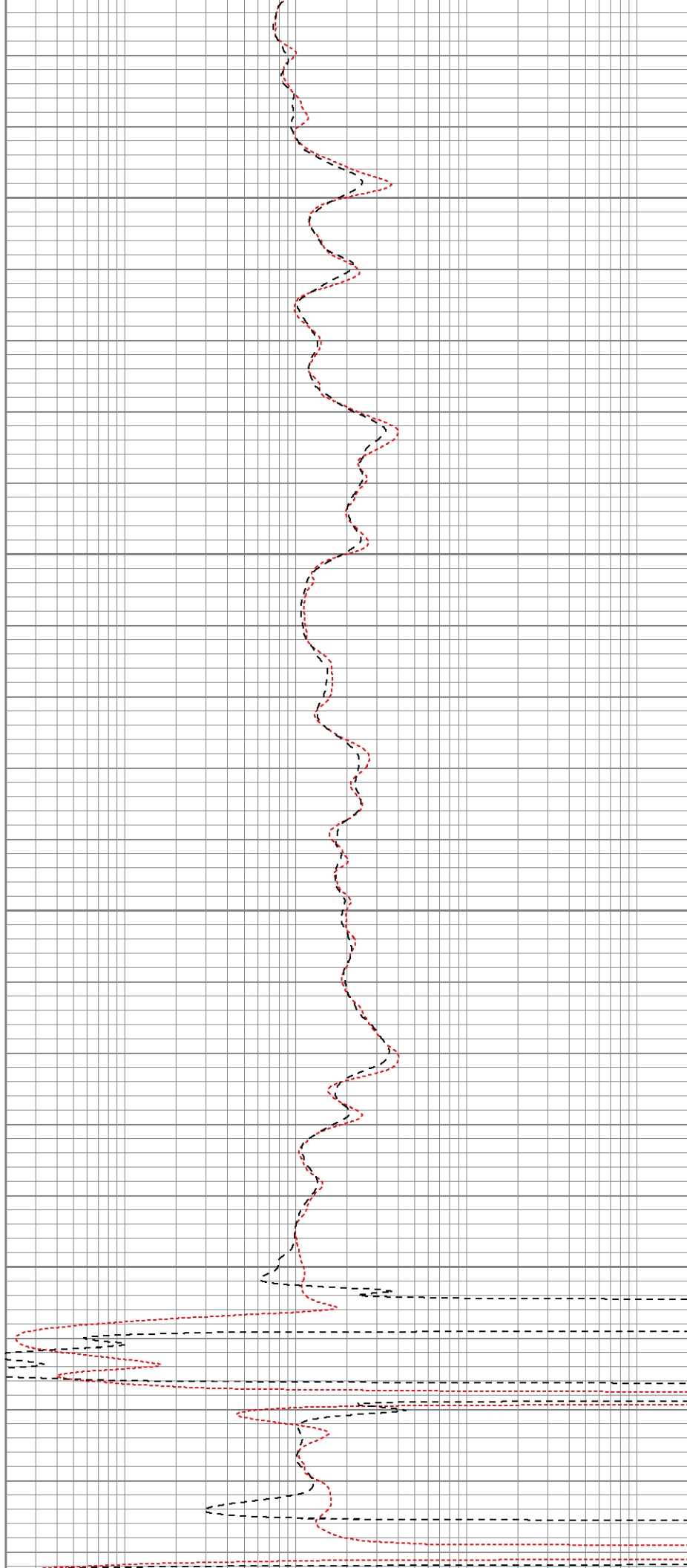


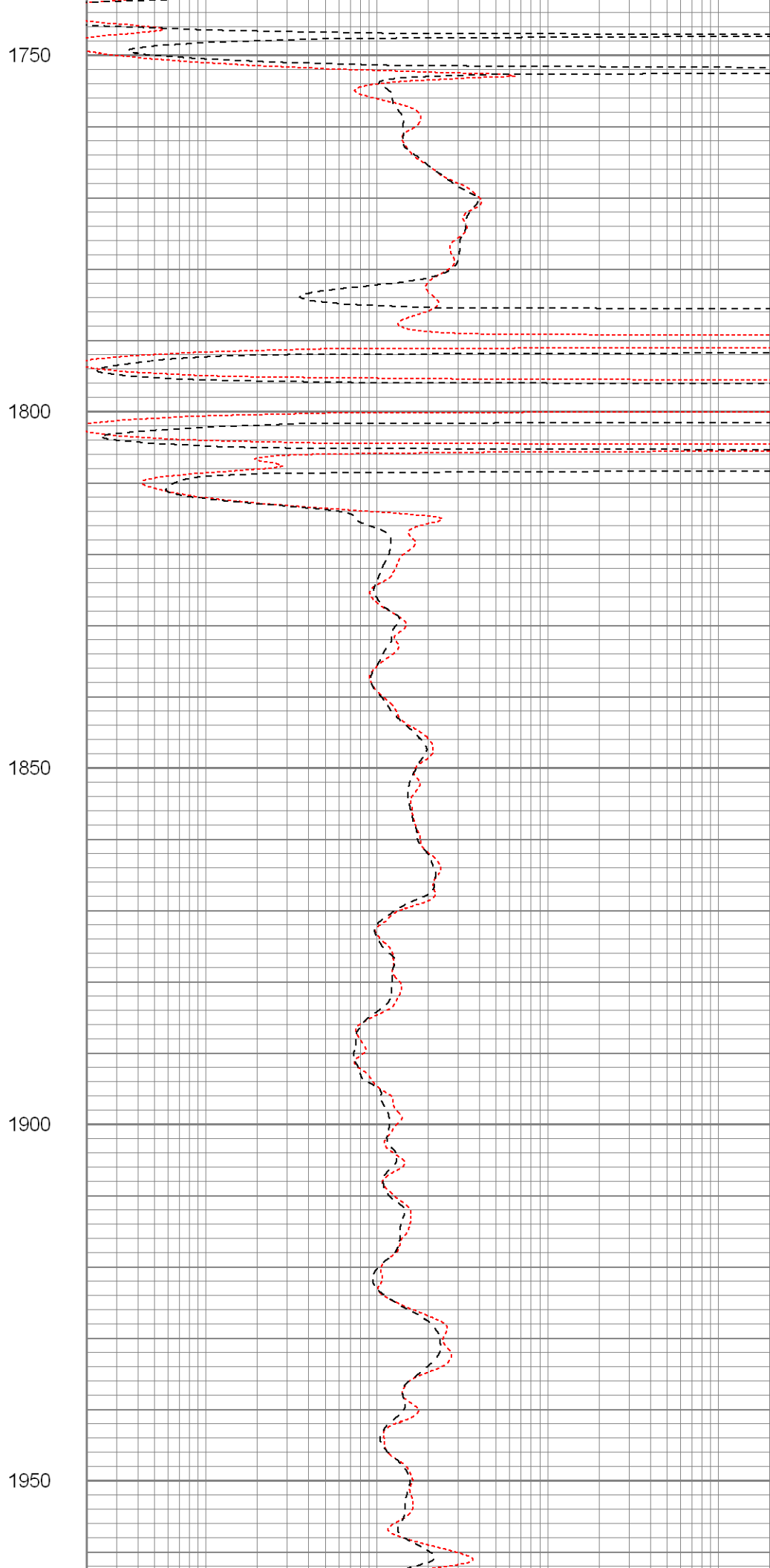
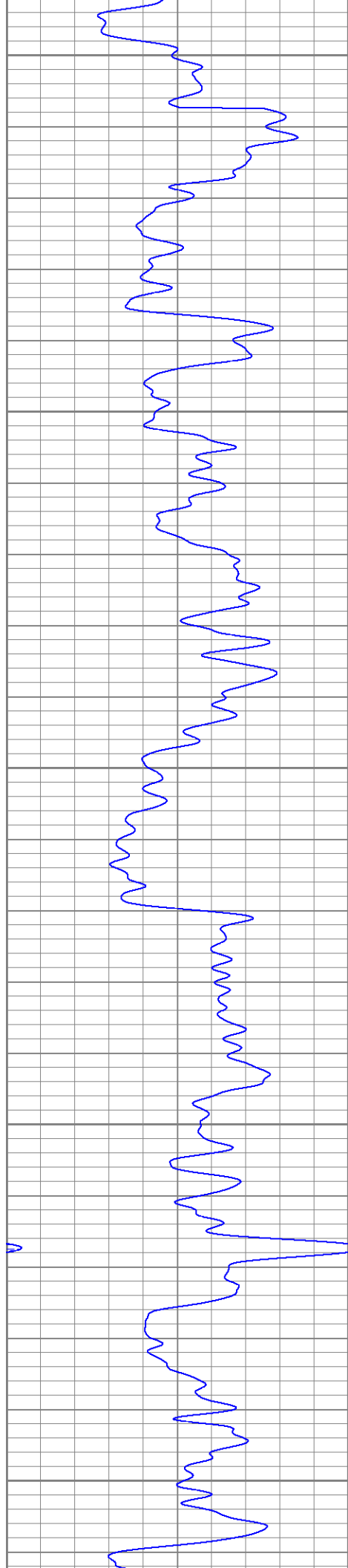
1550

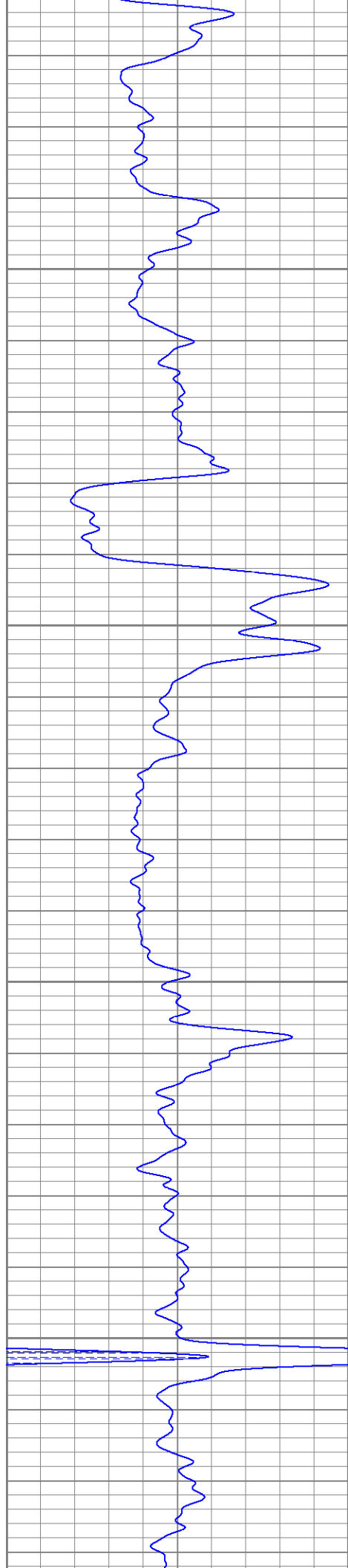
1600

1650

1700





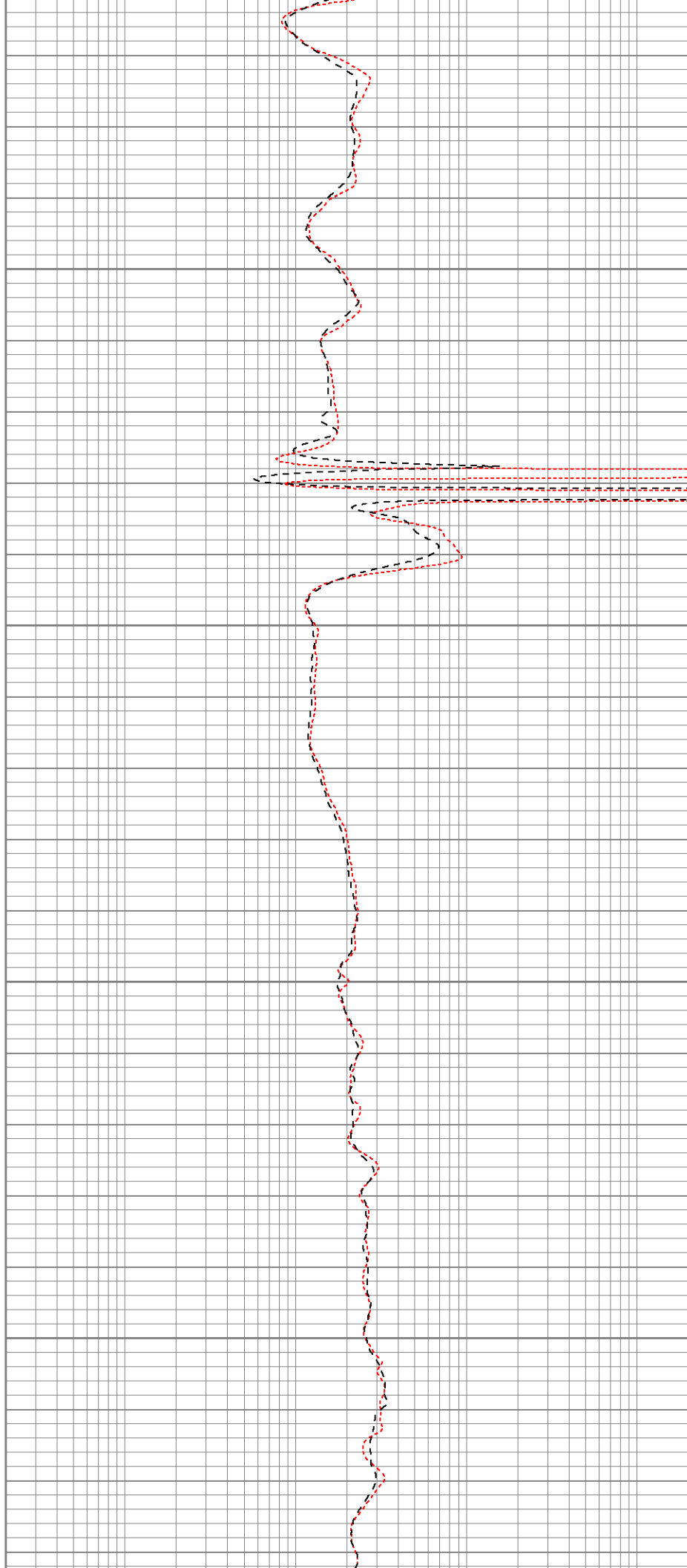


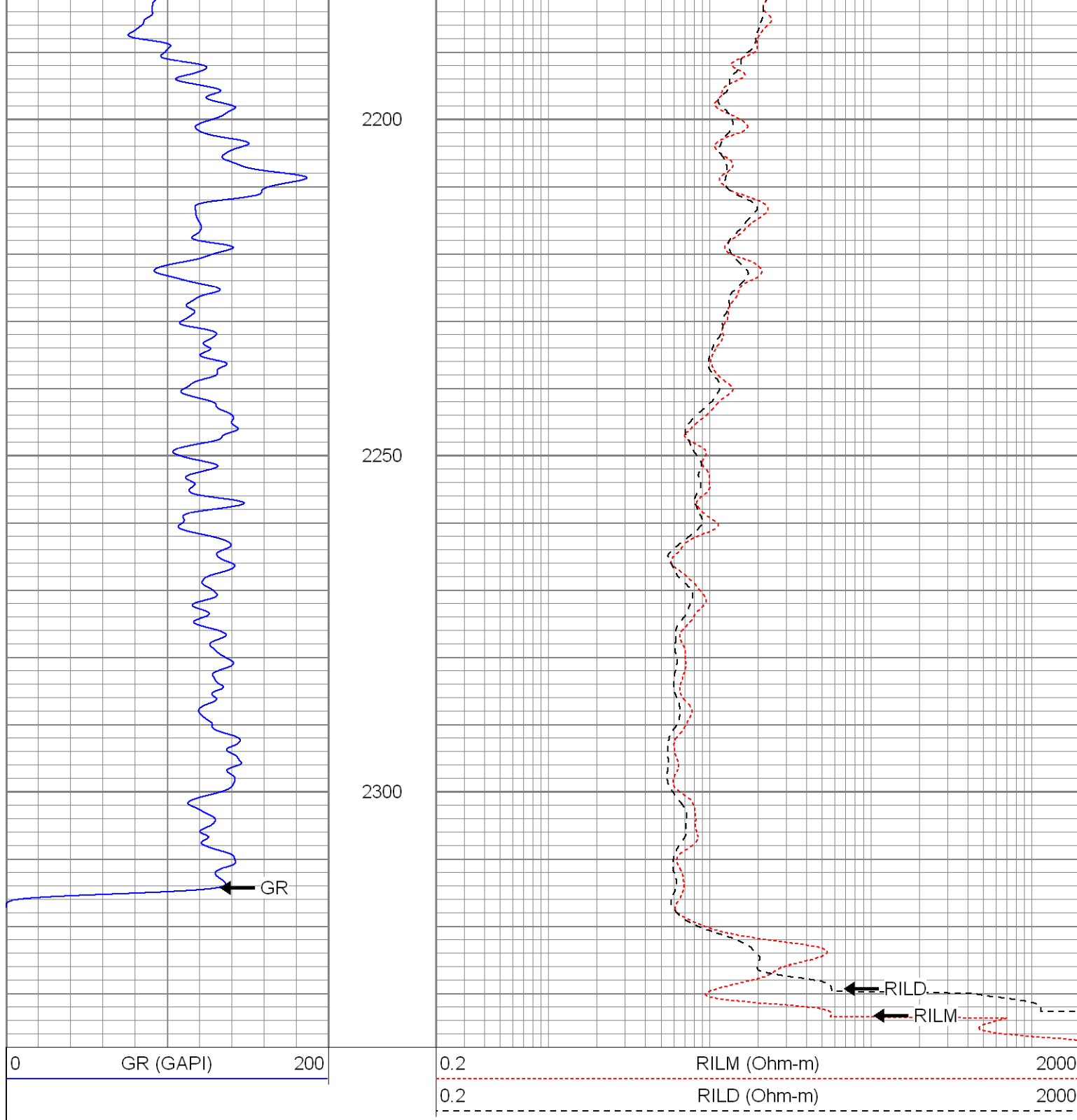
2000

2050

2100

2150





SUPERIOR

Black Lick, Pa.
Mercer, Pa.
Wooster, Oh.
Cleveland, Ok.
Trinidad, Co.

Repeat Pass

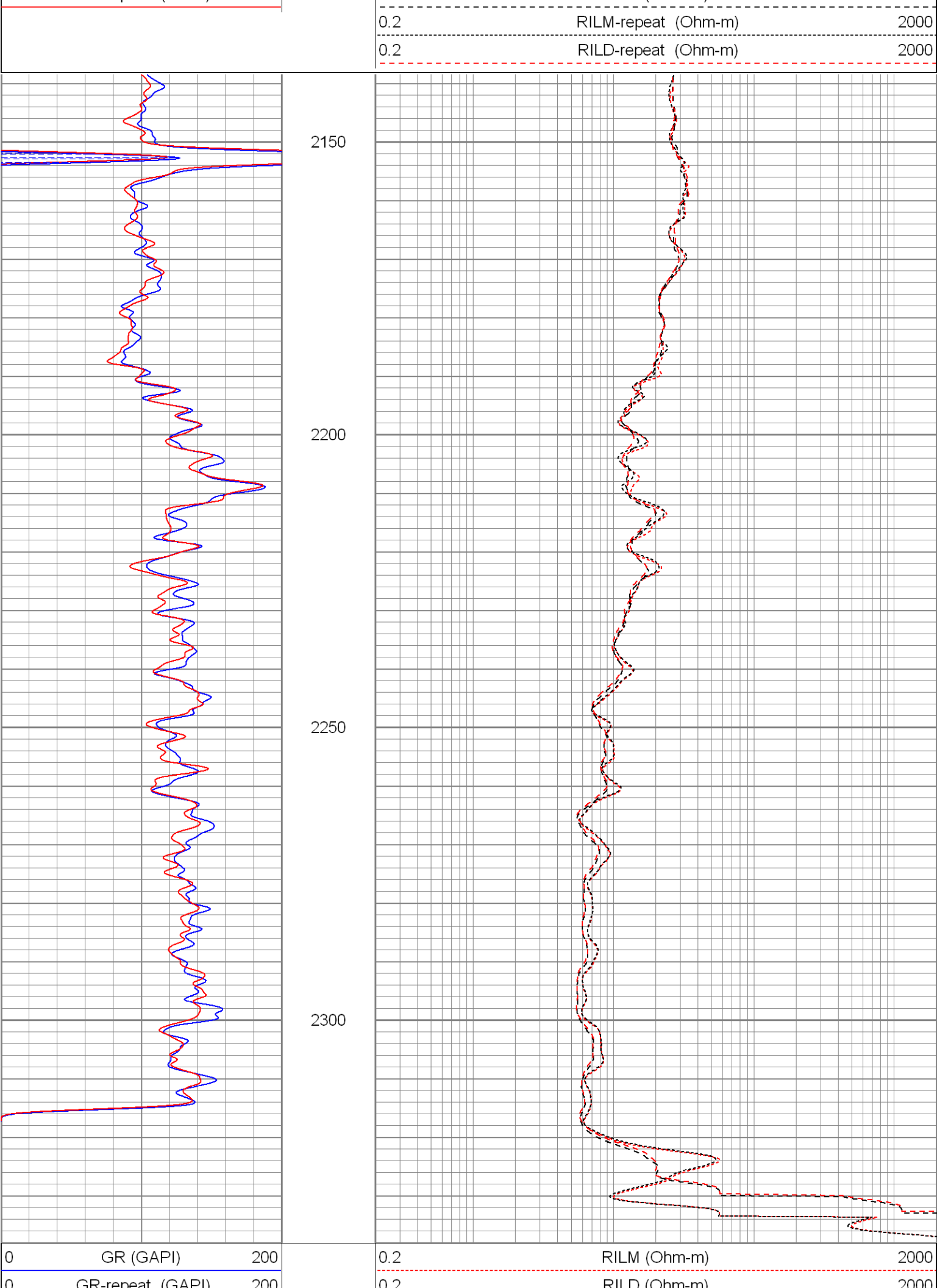
Database File: xtoac0404.db
Dataset Pathname: pass1.2
Presentation Format: dil2
Dataset Creation: Sun Aug 10 20:01:47 2008 by Calc Open-Cased 071220
Charted by: Depth in Feet scaled 1:240

0 GR (GAPI) 200

0 GR-repeat (GAPI) 200

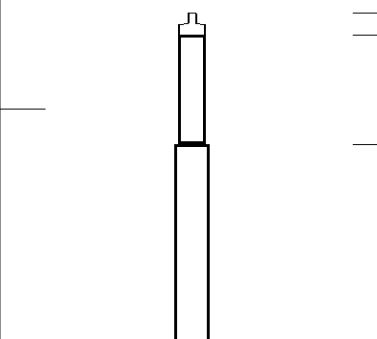
0.2 RILM (Ohm-m) 2000

0.2 RILD (Ohm-m) 2000



GR repeat (Ohm-m)	200	0.2	RILD (Ohm-m)	2000
		0.2	RILM-repeat (Ohm-m)	2000
		0.2	RILD-repeat (Ohm-m)	2000

Calibration Report									
Database File:		xtoac0404.db							
Dataset Pathname:		pass1							
Dataset Creation:		Sun Aug 10 17:37:30 2008 by Log Open-Cased 071220							
Dual Induction Calibration Report									
Serial-Model:		5375-G							
Surface Cal Performed:		Wed Jul 23 11:29:18 2008							
Downhole Cal Performed:		Wed Jul 23 11:29:47 2008							
Surface Calibration									
Readings				References			Results		
Loop:	Air	Loop		Air	Loop		m	b	
Deep	0.026	0.645	V	0.000	500.000	mmho-m	808.472	-21.376	
Medium	0.030	0.770	V	0.000	550.000	mmho-m	743.584	-22.316	
Internal:	Zero	Cal		Zero	Cal		m	b	
Deep	0.027	0.645	V	0.000	500.000	mmho-m	808.639	-21.534	
Medium	0.030	0.770	V	0.000	550.000	mmho-m	743.302	-22.248	
Downhole Calibration									
Readings				References			Results		
Internal:	Zero	Cal		Zero	Cal		m	b	
Deep	-0.271	500.262	mmho-m	0.153	500.049	mmho-m	0.999	0.424	
Medium	-0.141	550.313	mmho-m	-0.059	550.150	mmho-m	1.000	0.082	
Shallow	2.528	0.036	V	500.000	2.000	Ohm-m	189.000	-2.700	
Gamma Ray Calibration Report									
Serial Number:		2001							
Tool Model:		OH							
Performed:		Thu Jul 24 15:21:22 2008							
Calibrator Value:		1.0		GAPI					
Background Reading:		0.0		cps					
Calibrator Reading:		1.0		cps					
Sensitivity:		0.2500		GAPI/cps					

Sensor	Offset (ft)	Schematic	Description	Len (ft)	OD (in)	Wt (lb)
GR	22.64		None	0.75	1.50	5.00
			GR-OH (2001) 2001	3.56	3.25	40.00

CILD SP	10.60 10.60		DIL-G (5375) Gearhart	21.47	4.00	345.00
CILM	6.89					
RLL3	1.70					
Dataset: xtoac0404.db: field/well/run1/pass1 Total Length: 25.78 ft Total Weight: 390.00 lb O.D.: 4.00 in						