



SUPERIOR
Black Lick, Pa.
Mercer, Pa.
Wooster, Oh.
Cleveland, Ok.
Trinidad, Co.

DUAL INDUCTION LOG

Company XTO Energy Inc.
Well Golden Eagle 32-15
Field Purgatoire River
County Las Animas State Colorado

Location: API # : 05 071 09631 00

770' FSL & 1766' FEL

SEC 32 TWP 33S RGE 67W

Permanent Datum Ground Level Elevation 7784'

Log Measured From Ground Level

Drilling Measured From Ground Level

Other Services
CDL
NEUTRON
Elevation
K.B. -----
D.F. -----
G.L. 7784'

Date 8-8-08

Run Number One

Depth Driller 2425'

Depth Logger 2430'

Bottom Logged Interval 2428'

Top Log Interval Surface Casing

Casing Driller 8 5/8" @ 499"

Casing Logger 499'

Bit Size 7 7/8"

Type Fluid in Hole Water

Density / Viscosity ///

pH / Fluid Loss ///

Source of Sample ///

Rm @ Meas. Temp ///

Rmf @ Meas. Temp ///

Rmc @ Meas. Temp ///

Source of Rmf / Rmc ///

Rm @ BHT ///

Time Circulation Stopped 10:00 P.M.

Time Logger on Bottom 12:40 A.M.

Maximum Recorded Temperature 97 DEG F

Equipment Number T697

Location Trinidad

Recorded By J. Cappellucci

Witnessed By Mr. Don Johnson

<<< Fold Here >>>

All interpretations are opinions based on inferences from electrical or other measurements and we cannot and do not guarantee the accuracy or correctness of any interpretation, and we shall not, except in the case of gross or willful negligence on our part, be liable or responsible for any loss, costs, damages, or expenses incurred or sustained by anyone resulting from any interpretation made by any of our officers, agents or employees. These interpretations are also subject to our general terms and conditions set out in our current Price Schedule.

Comments

Well Directions:

First Bosque Entrance to Cherry Canyon, go thru green gate, past Compressor Station 5, stay right at hard switchback, take second left, at Y stay left, dead end on location.

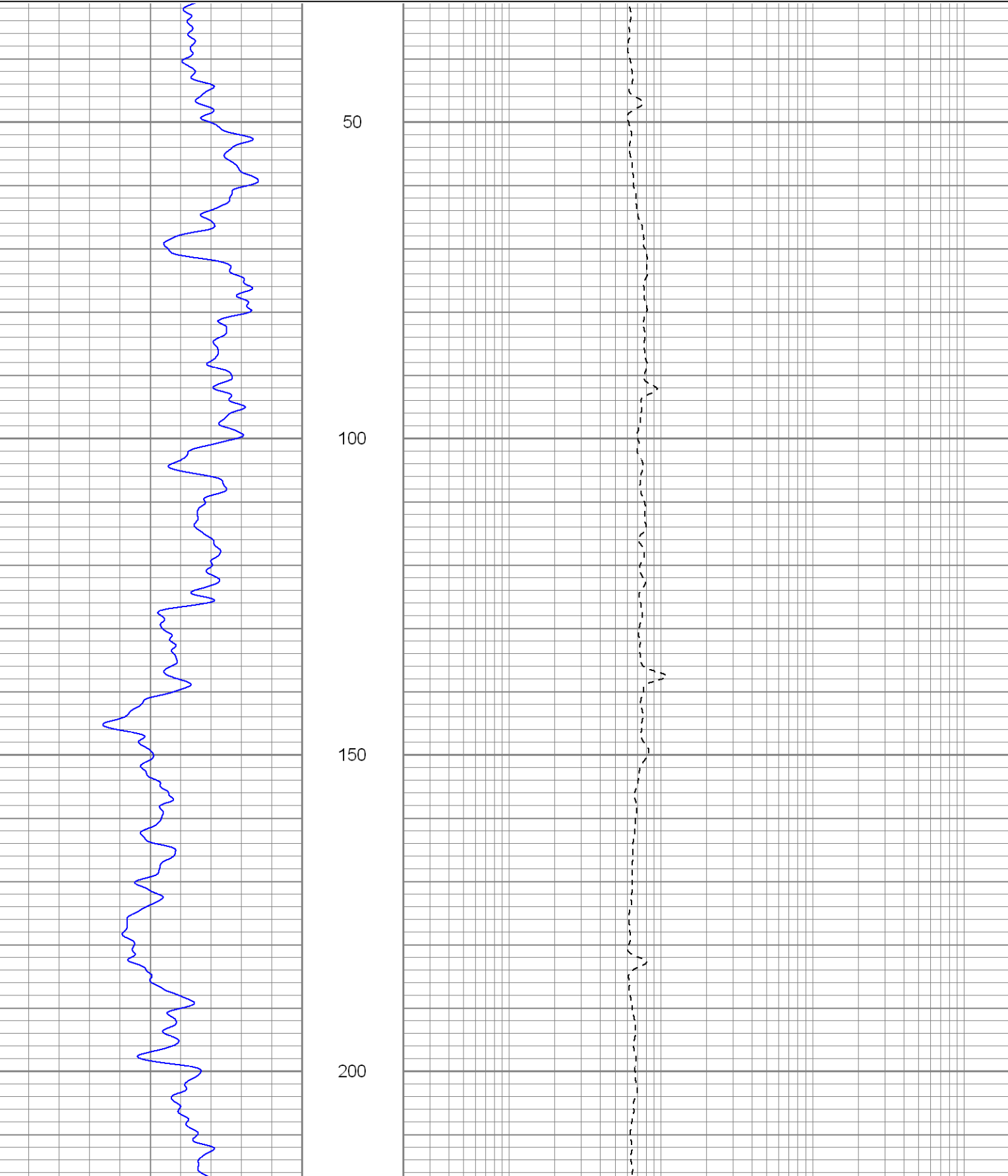


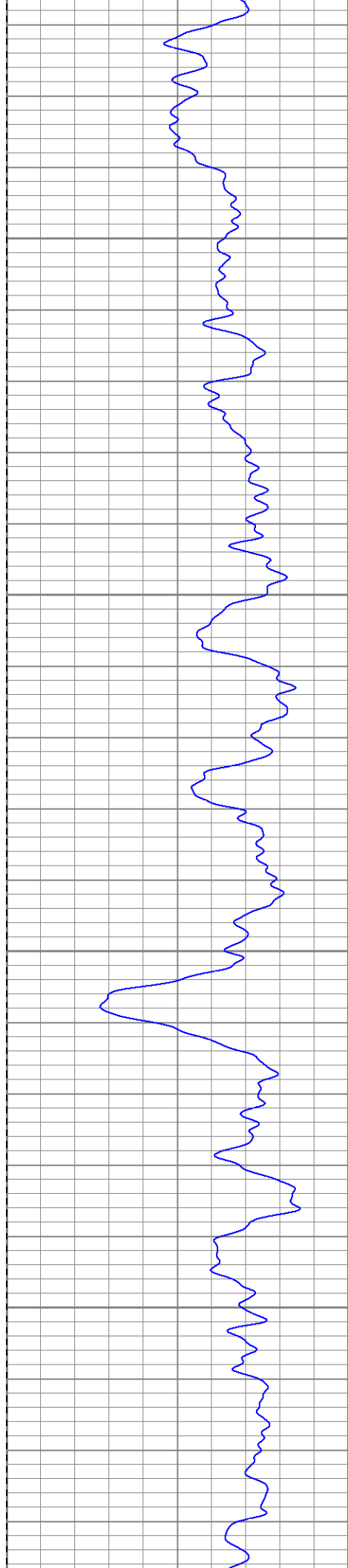
SUPERIOR
Black Lick, Pa.
Mercer, Pa.
Wooster, Oh.
Cleveland, Ok.
Trinidad, Co.

Main Pass

Database File: xtoge3215.db
Dataset Pathname: pass2.1
Presentation Format: dil
Dataset Creation: Fri Aug 08 02:27:07 2008 by Calc Open-Cased 071220
Charted by: Depth in Feet scaled 1:240

| | | | | | |
|------|-----------|-----|-----|--------------|------|
| 0 | GR (GAPI) | 200 | 0.2 | RILM (Ohm-m) | 2000 |
| -200 | SP (mV) | 0 | 0.2 | RILD (Ohm-m) | 2000 |
| | | | 0.2 | RLL3 (Ohm-m) | 2000 |



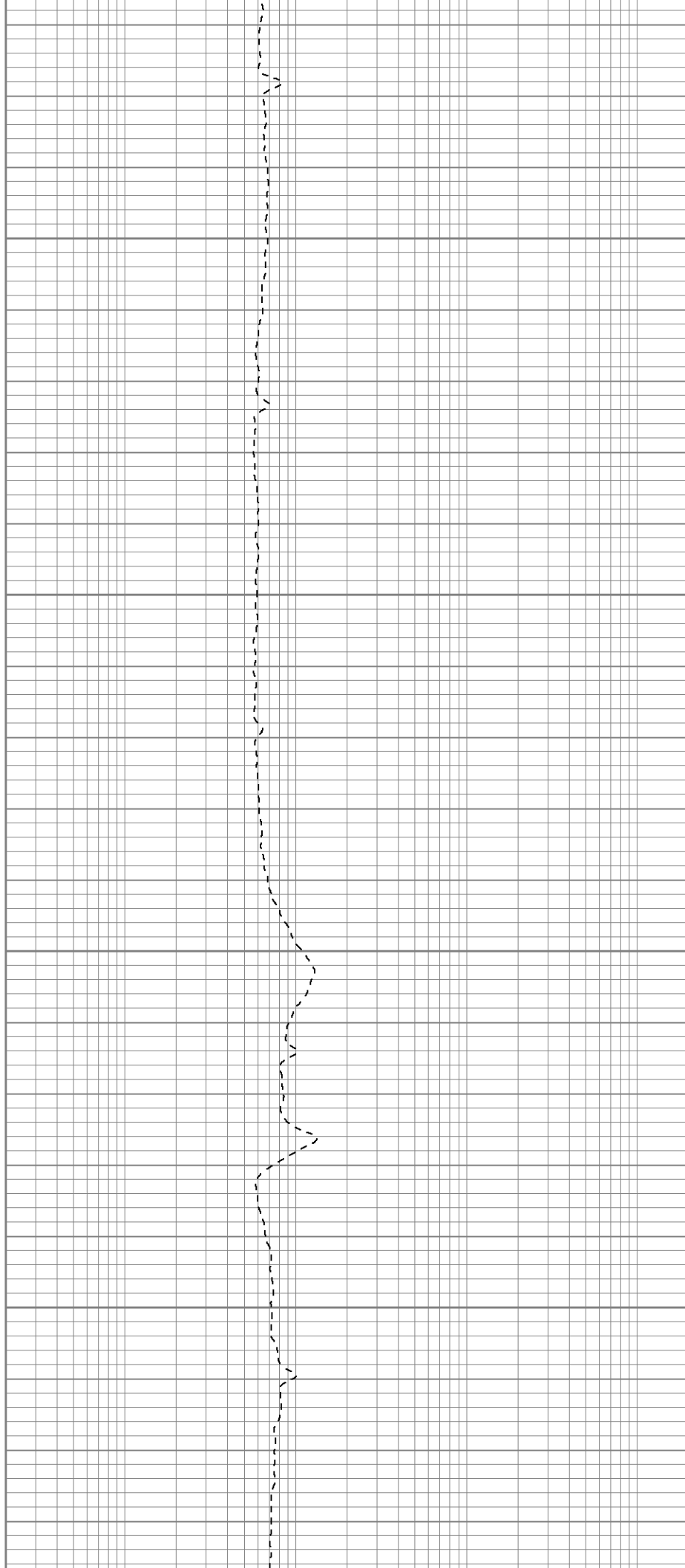


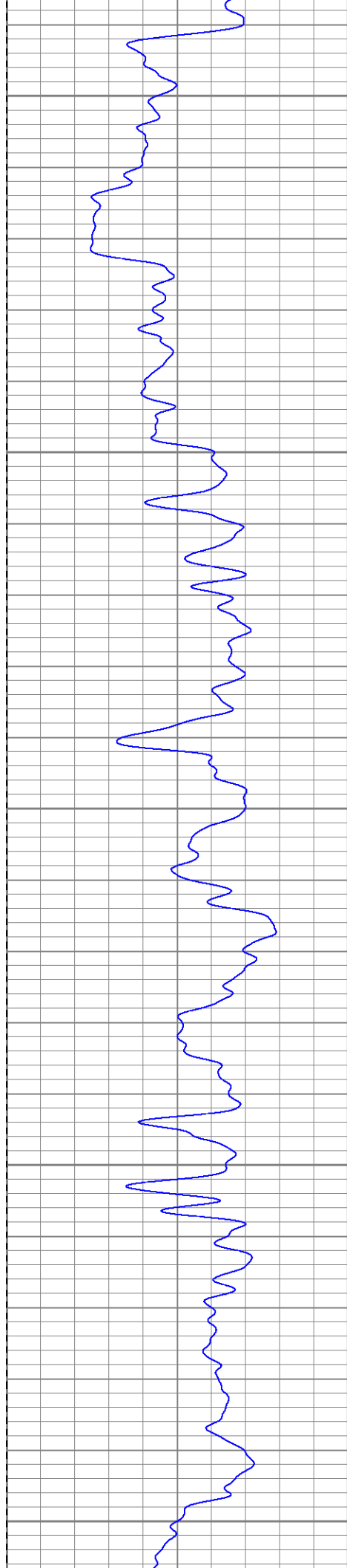
250

300

350

400





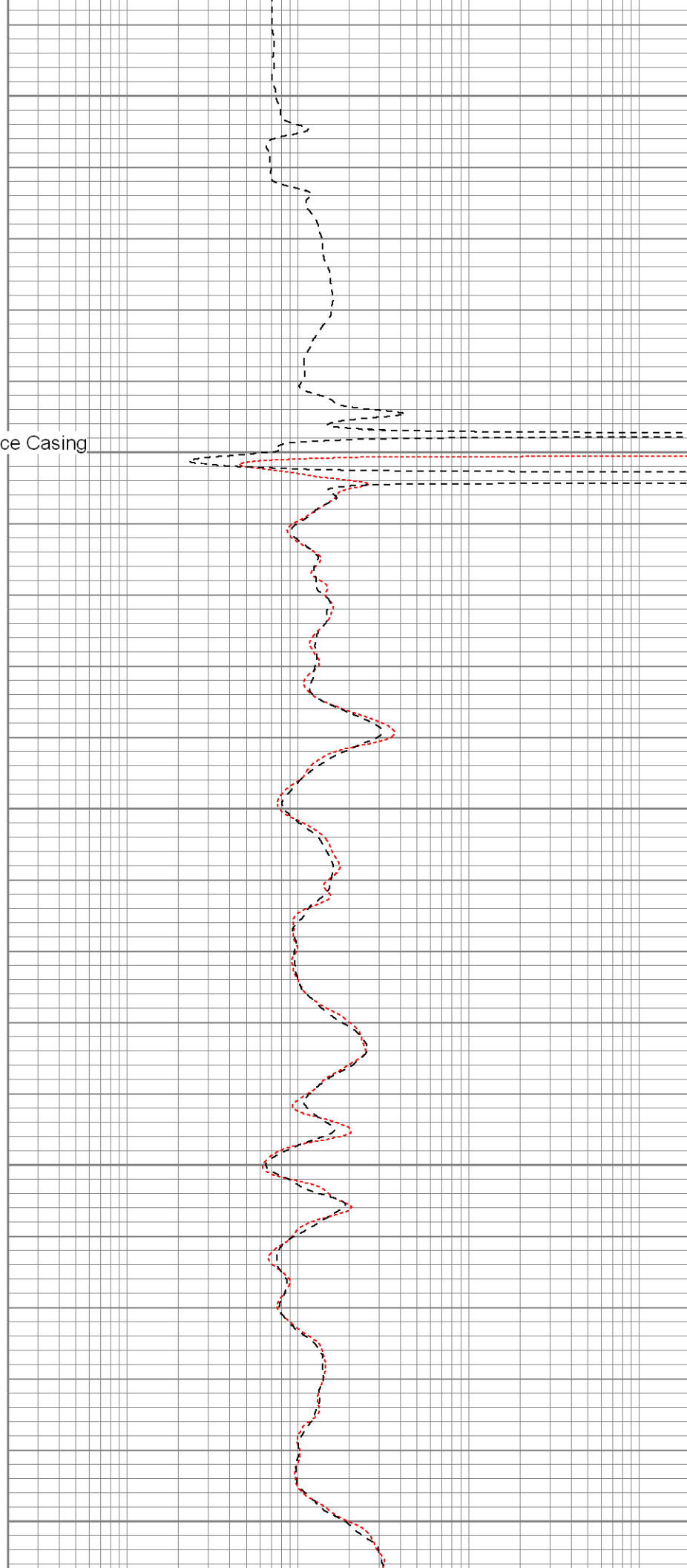
450

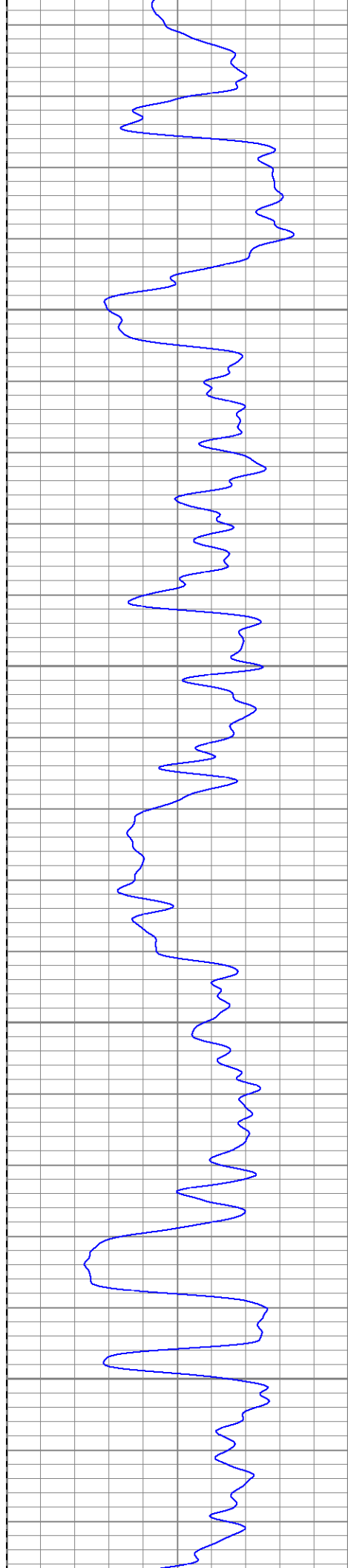
500 Surface Casing

550

600

650



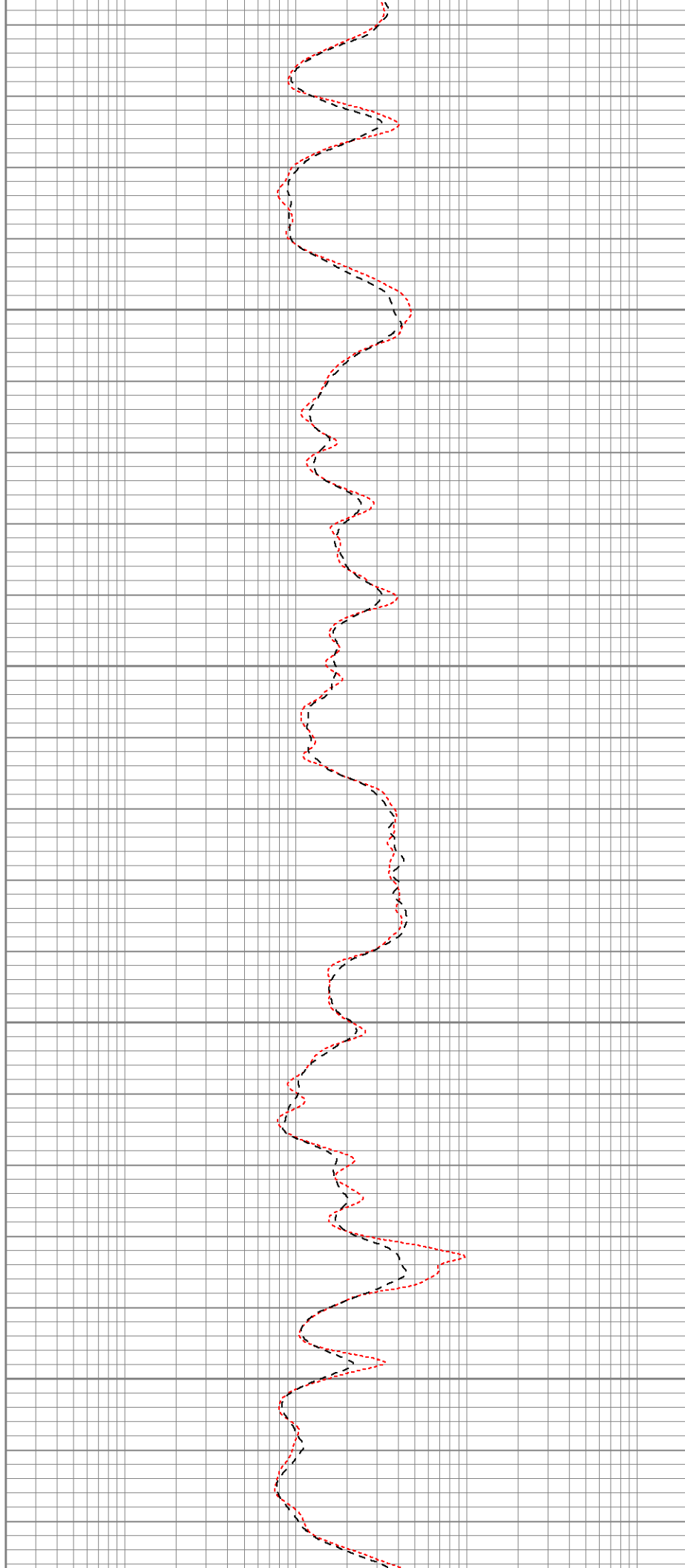


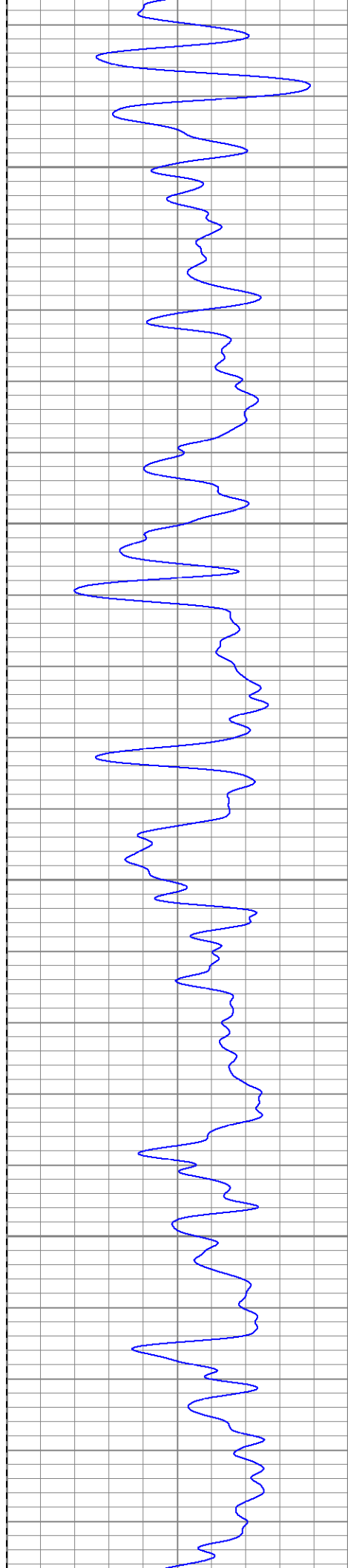
700

750

800

850



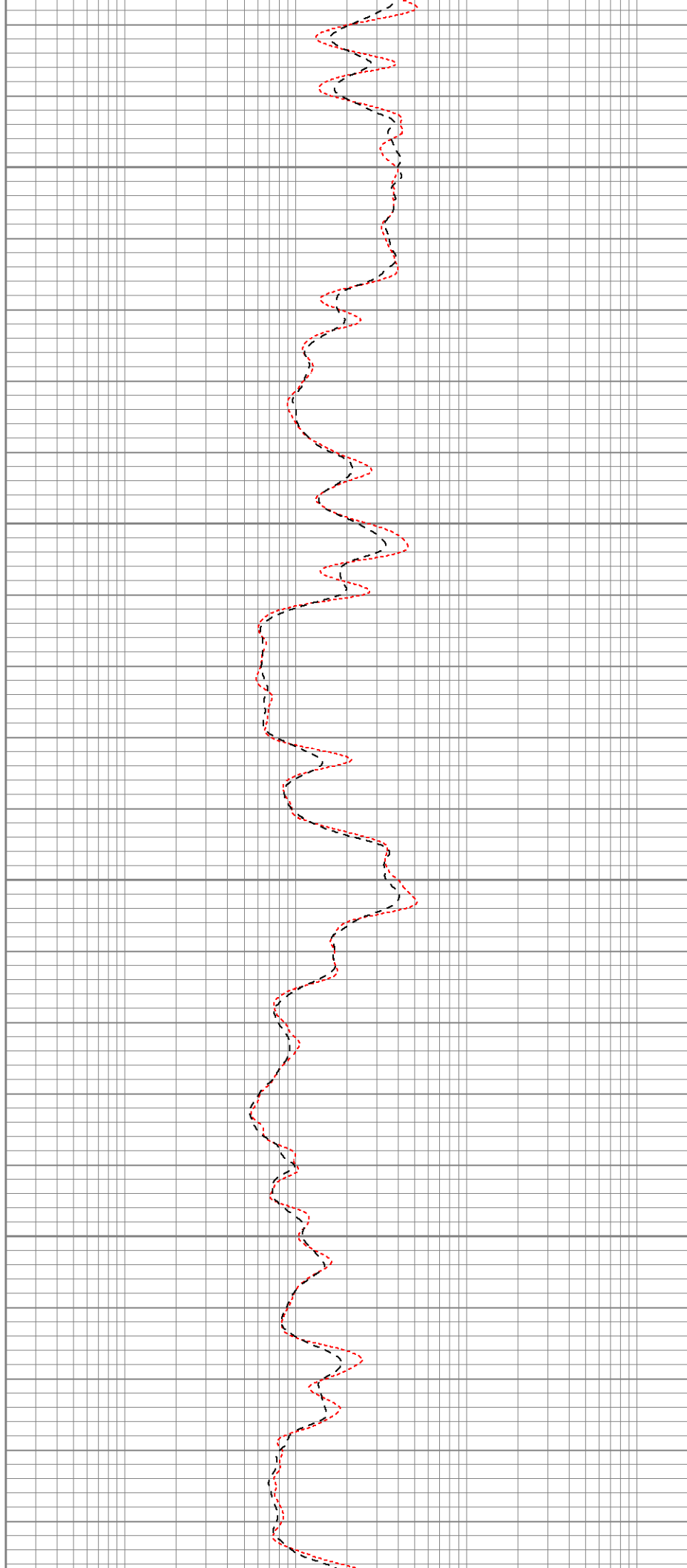


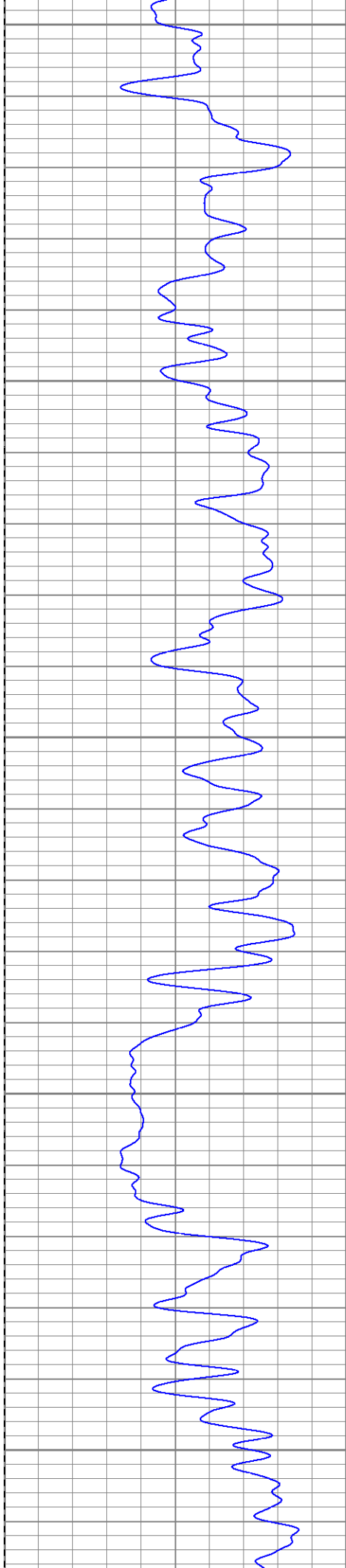
900

950

1000

1050





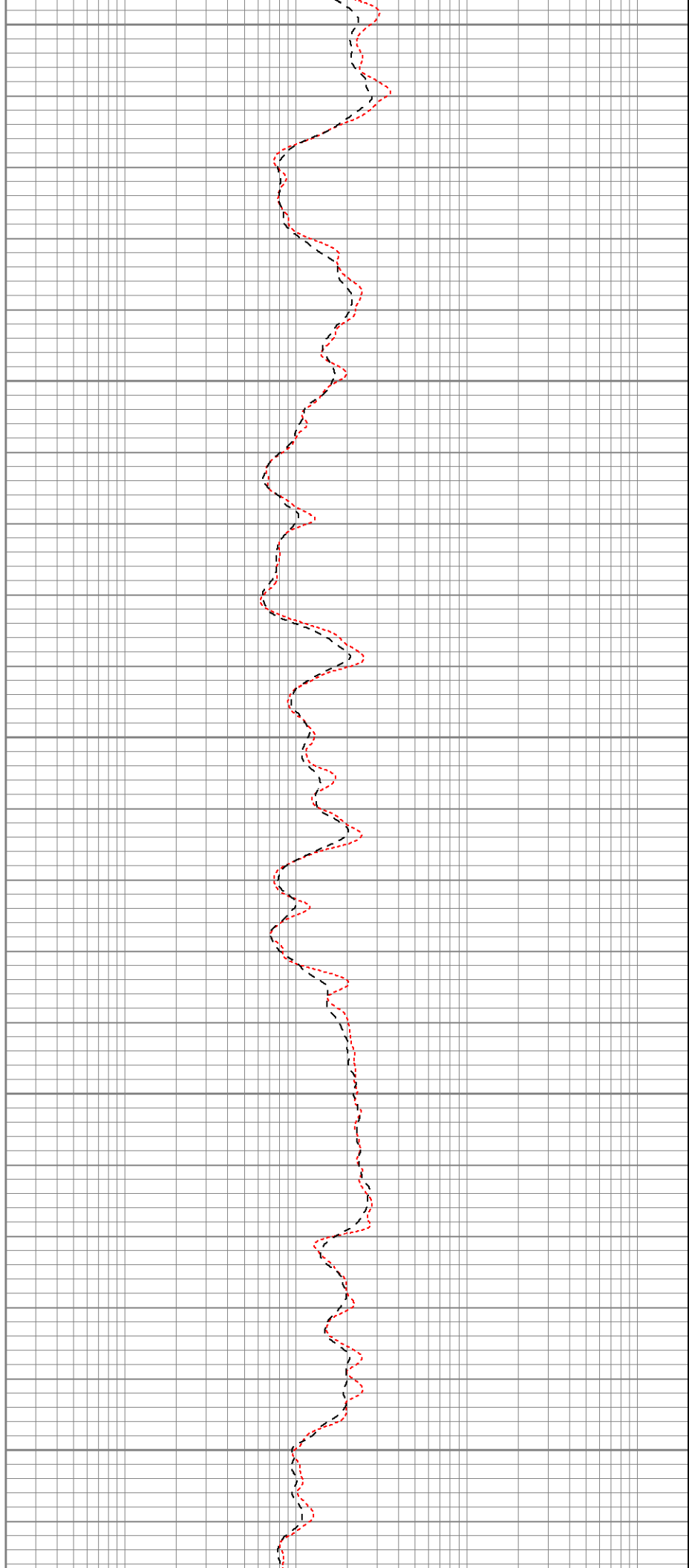
1100

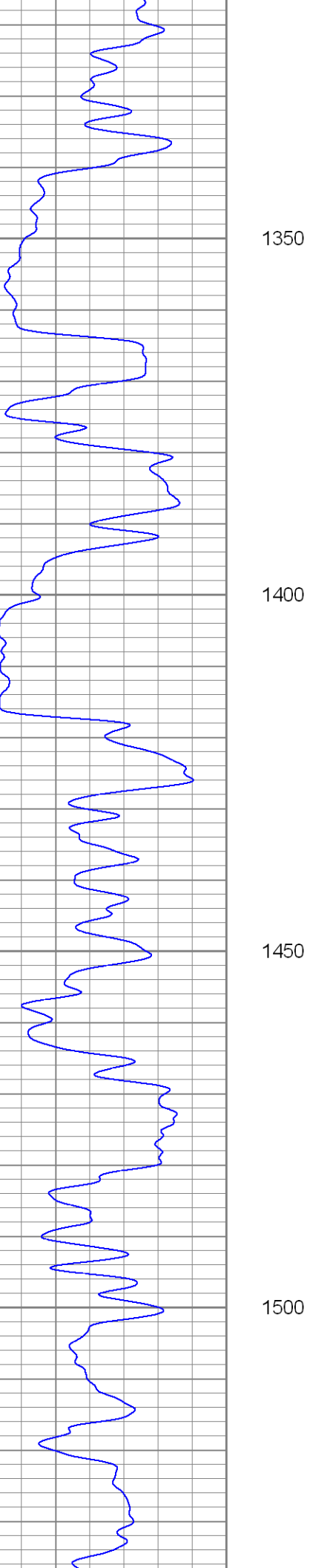
1150

1200

1250

1300



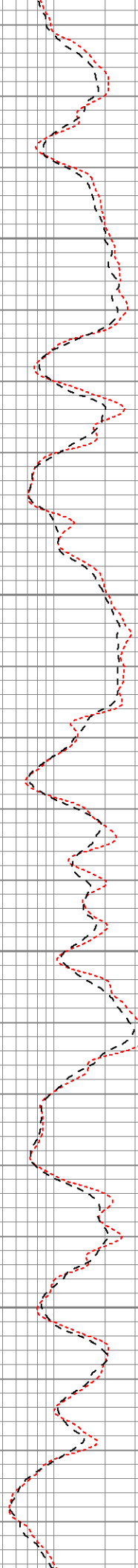


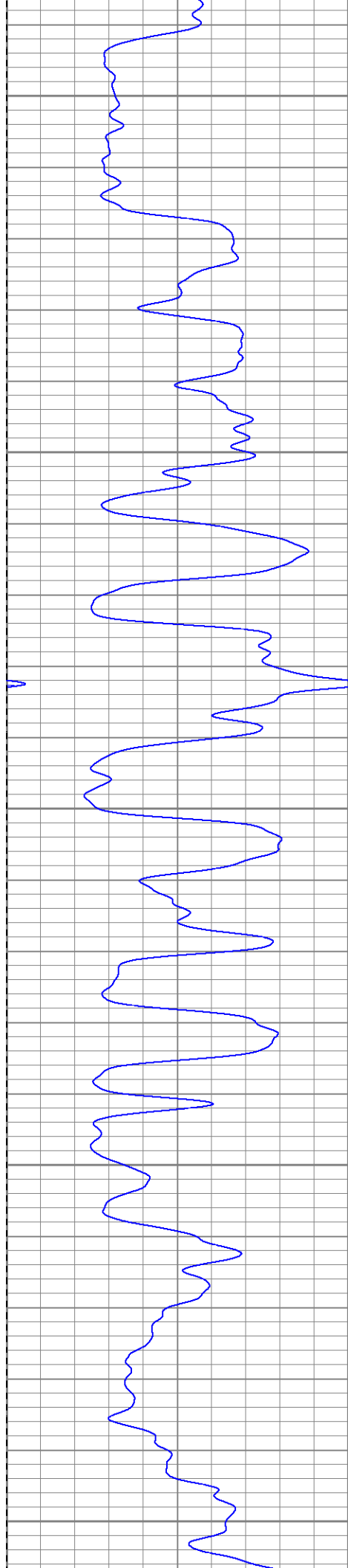
1350

1400

1450

1500





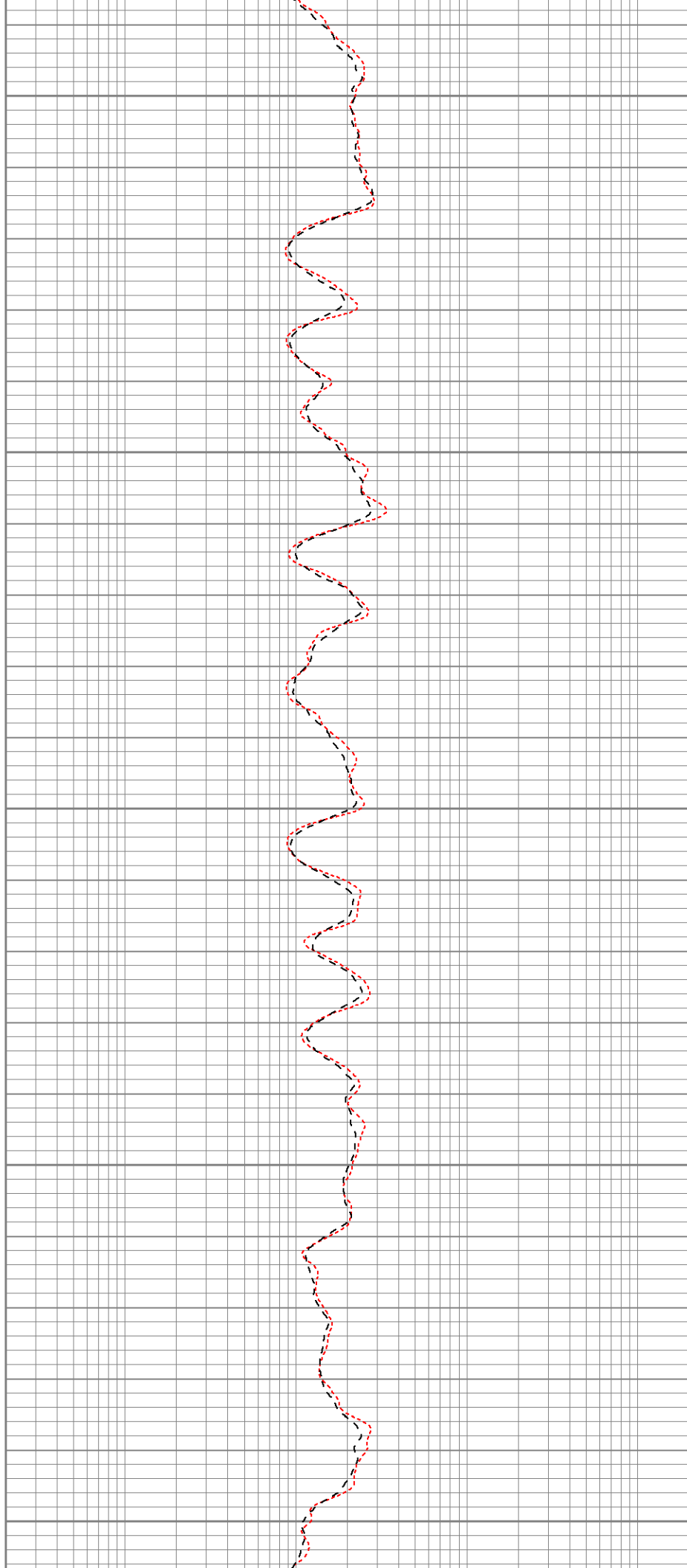
1550

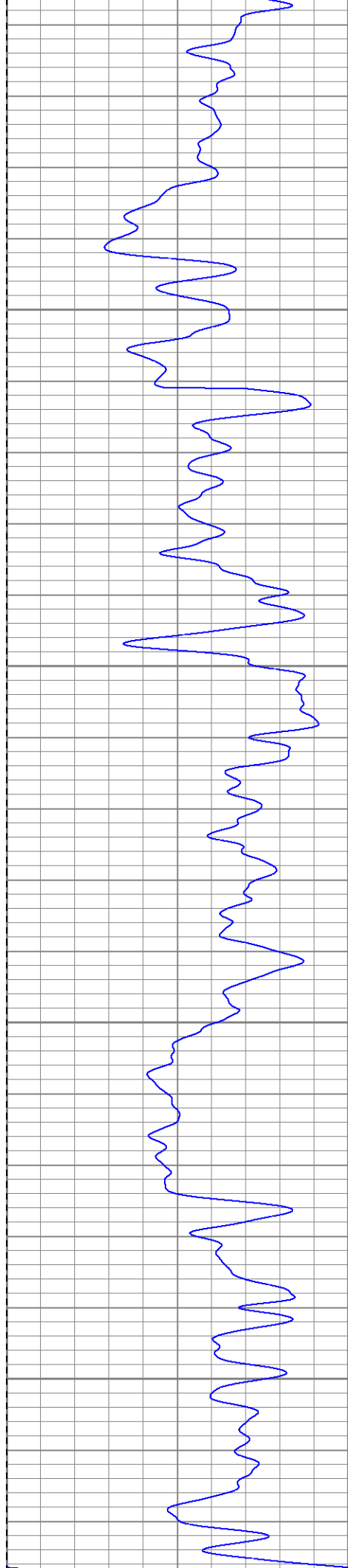
1600

1650

1700

1750



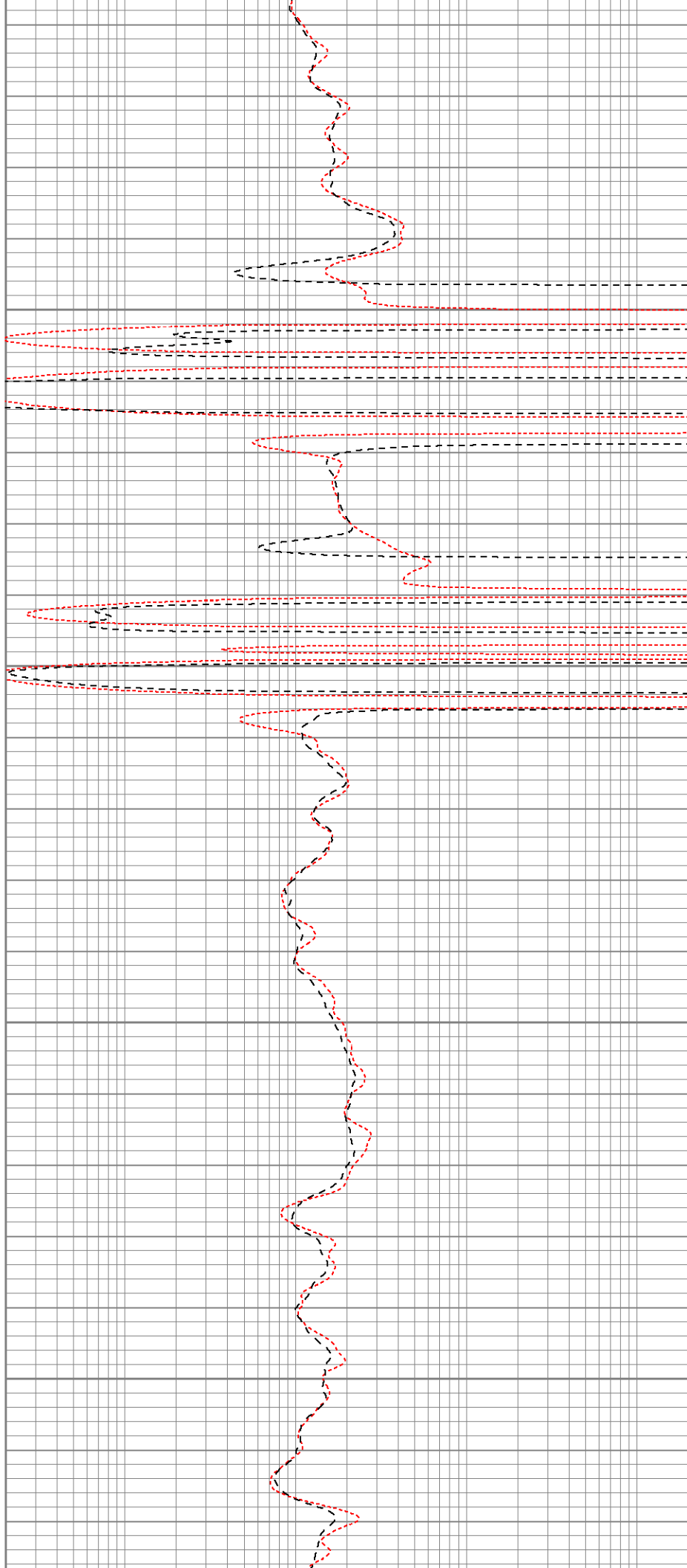


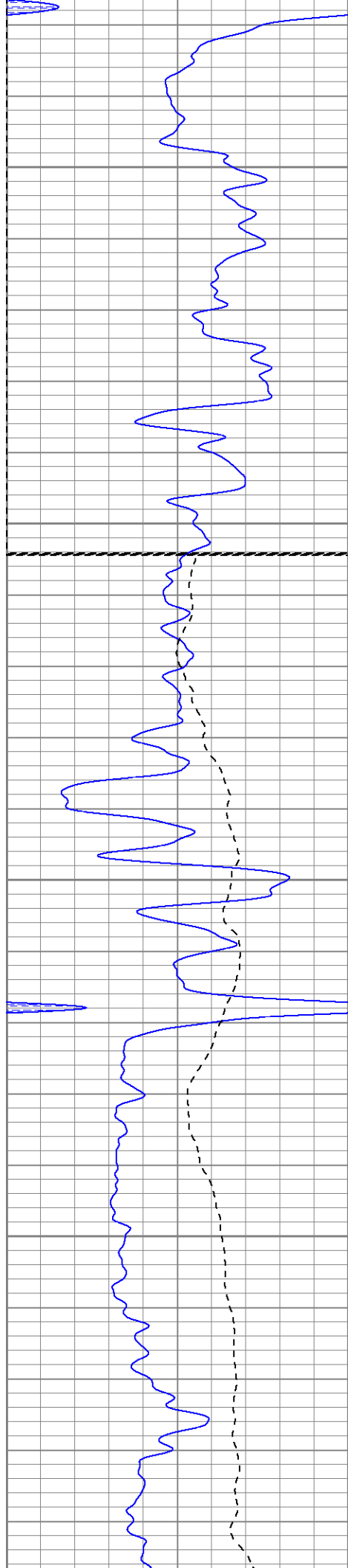
1800

1850

1900

1950





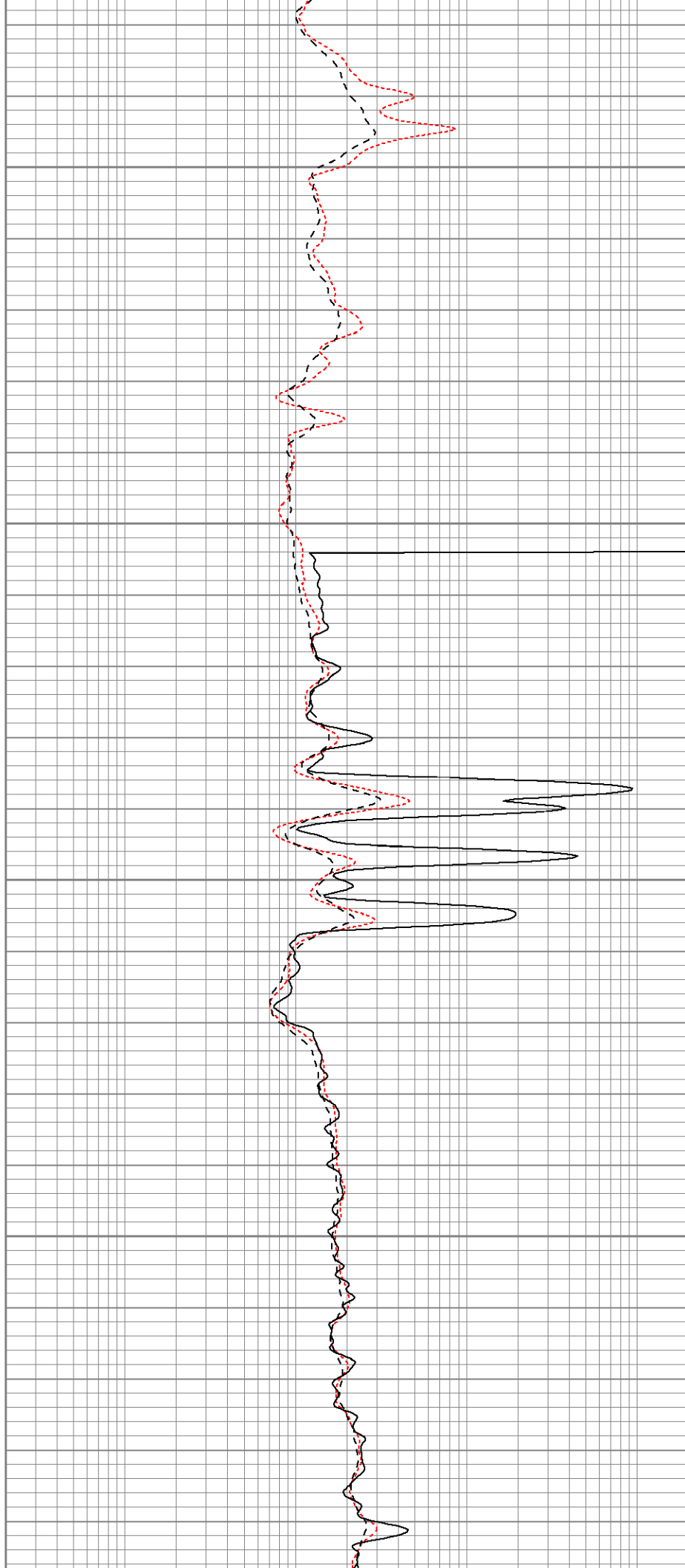
2000

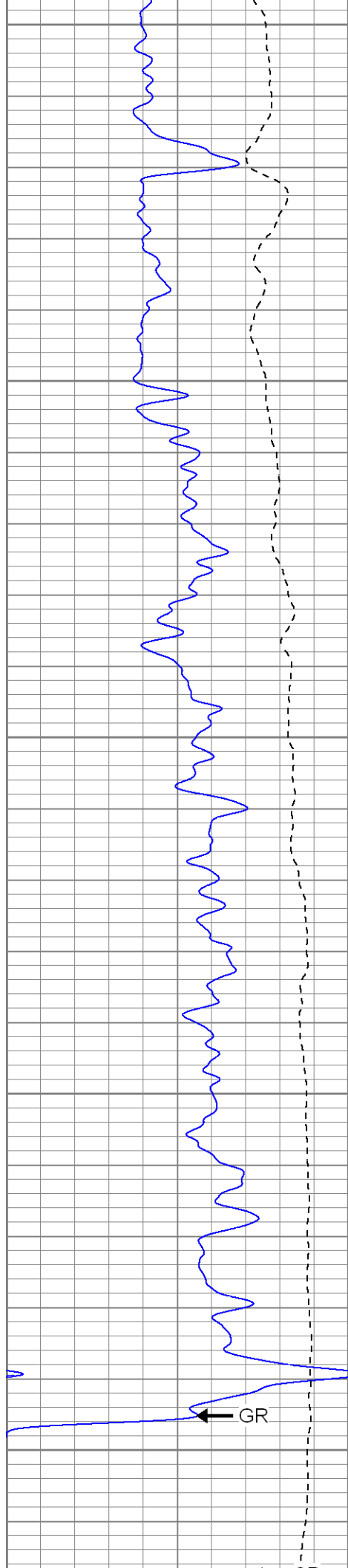
2050

Fluid Level

2100

2150





2200

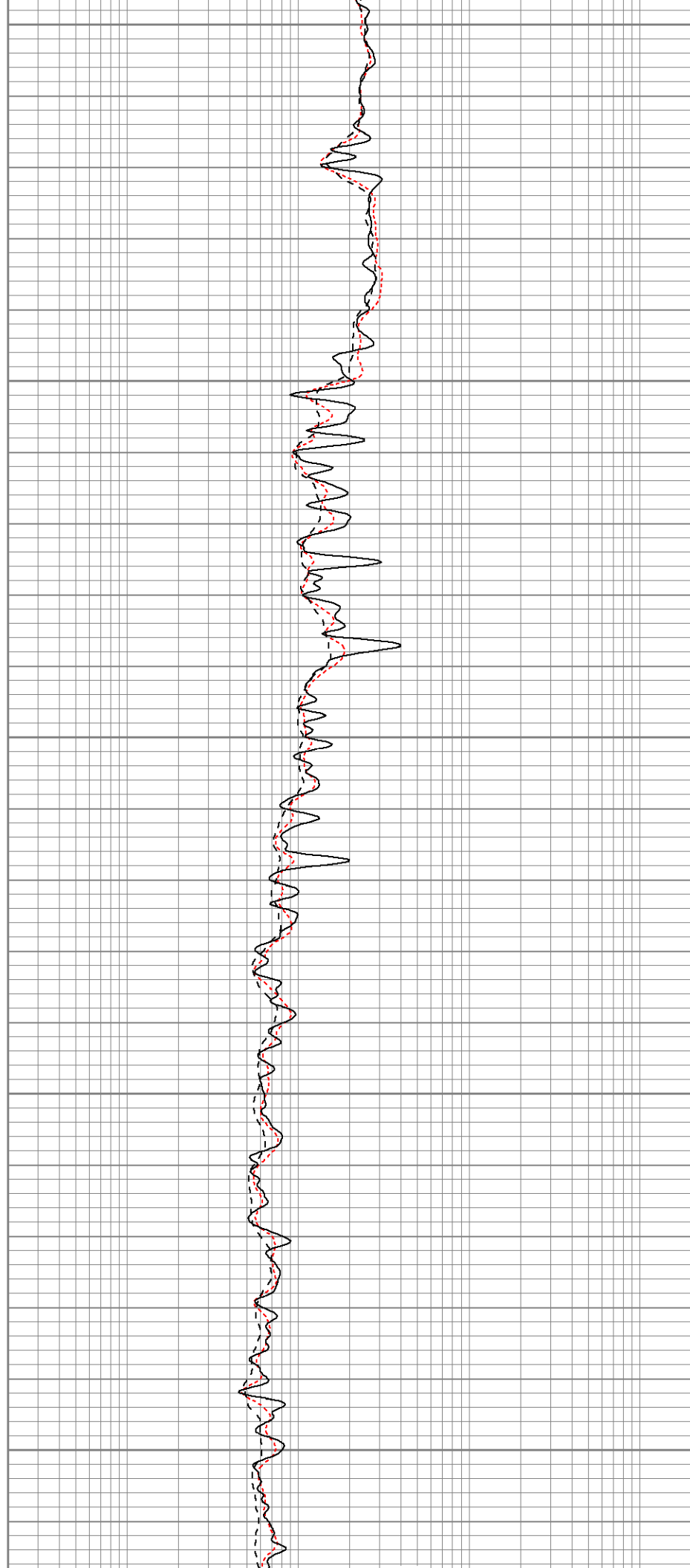
2250

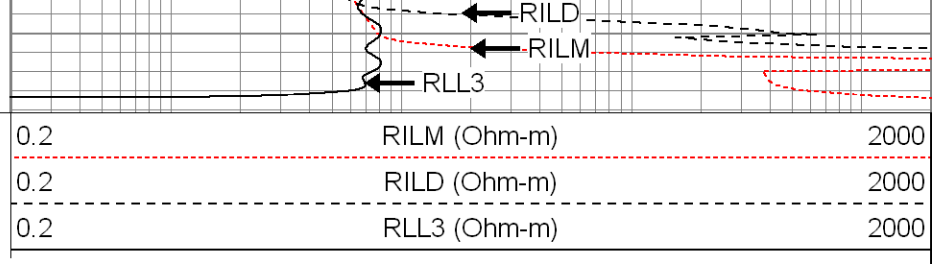
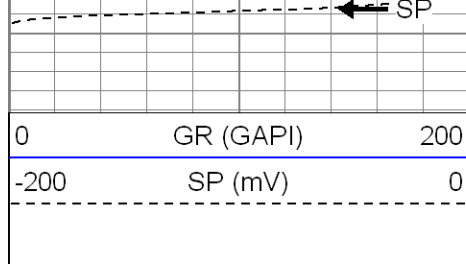
2300

2350

2400

GR







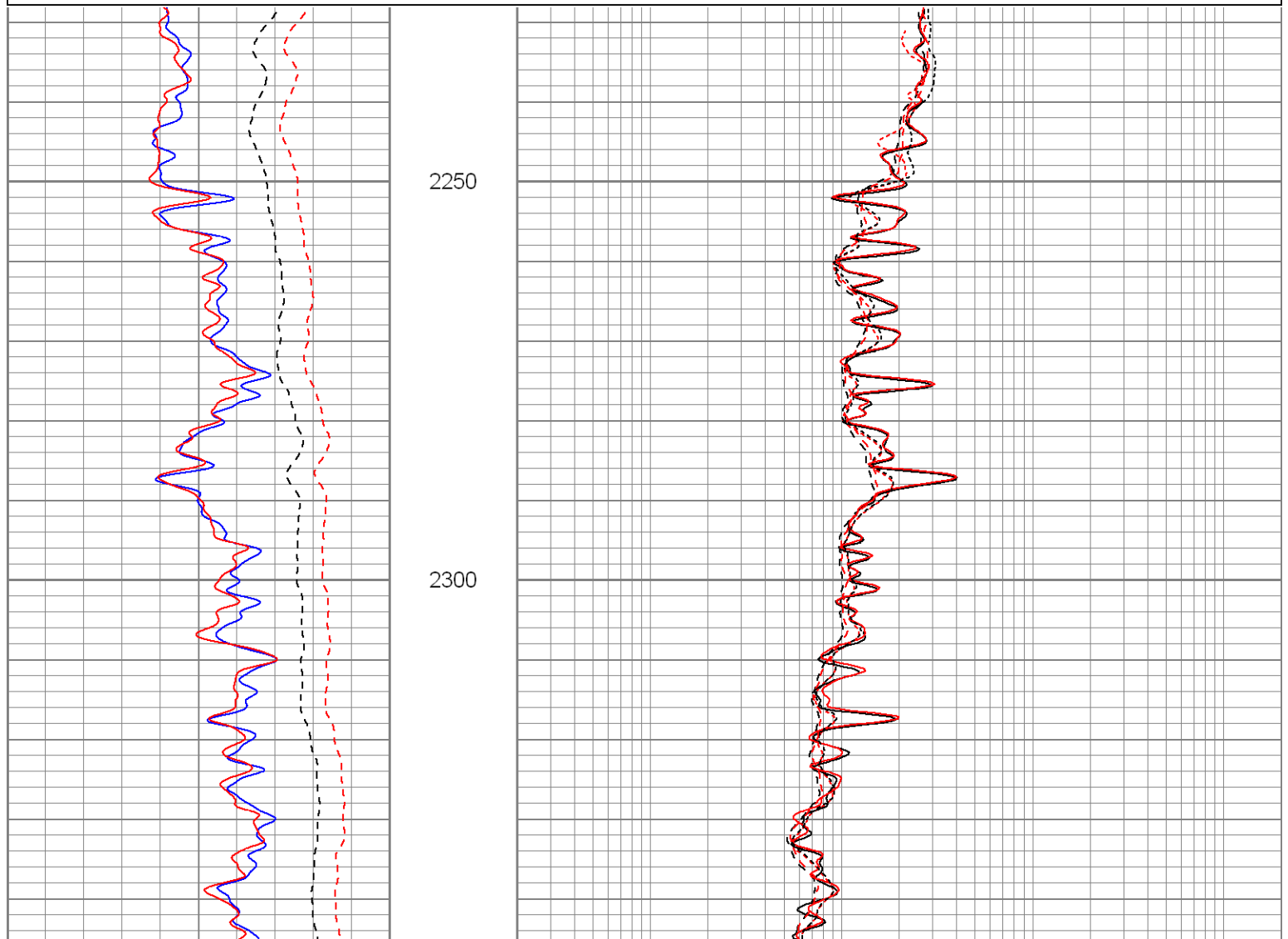
SUPERIOR
WELL SERVICES

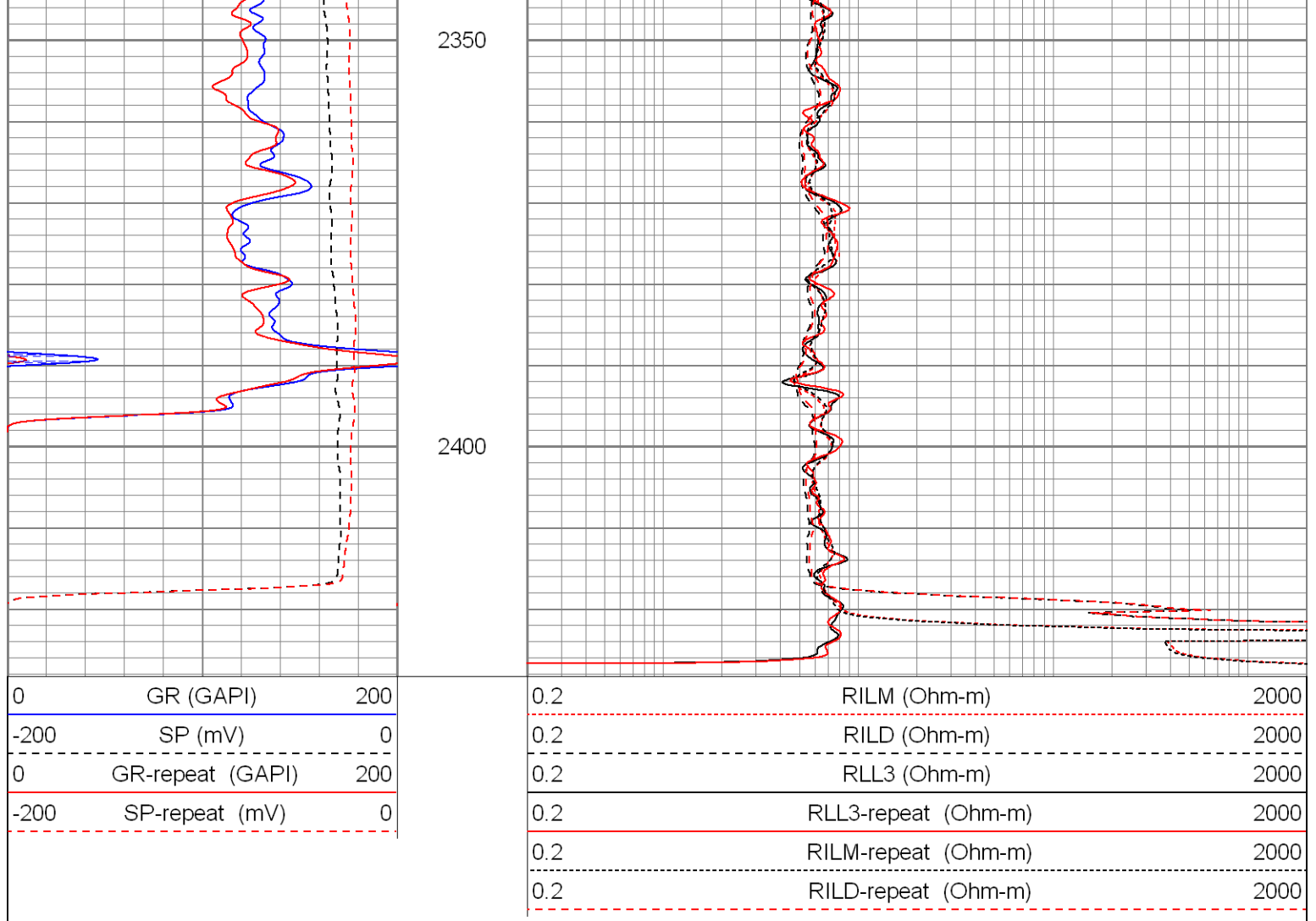
Black Lick, Pa.
Mercer, Pa.
Wooster, Oh.
Cleveland, Ok.
Trinidad, Co.

Repeat Pass

Database File: xtoge3215.db
 Dataset Pathname: pass1.1
 Presentation Format: dil
 Dataset Creation: Fri Aug 08 01:10:31 2008 by Calc Open-Cased 071220
 Charted by: Depth in Feet scaled 1:240

| | | | | | |
|------|------------------|-----|-----|---------------------|------|
| 0 | GR (GAPI) | 200 | 0.2 | RILM (Ohm-m) | 2000 |
| -200 | SP (mV) | 0 | 0.2 | RILD (Ohm-m) | 2000 |
| 0 | GR-repeat (GAPI) | 200 | 0.2 | RLL3 (Ohm-m) | 2000 |
| -200 | SP-repeat (mV) | 0 | 0.2 | RLL3-repeat (Ohm-m) | 2000 |
| | | | 0.2 | RILM-repeat (Ohm-m) | 2000 |
| | | | 0.2 | RILD-repeat (Ohm-m) | 2000 |





| Calibration Report | | | | | | | | | |
|-----------------------------------|-------|---|---|------------|---------|--------|---------|---------|--|
| Database File: | | xtoge3215.db | | | | | | | |
| Dataset Pathname: | | pass1 | | | | | | | |
| Dataset Creation: | | Fri Aug 08 00:38:17 2008 by Log Open-Cased 071220 | | | | | | | |
| Dual Induction Calibration Report | | | | | | | | | |
| Serial-Model: | | 5375-G | | | | | | | |
| Surface Cal Performed: | | Wed Jul 23 11:29:18 2008 | | | | | | | |
| Downhole Cal Performed: | | Wed Jul 23 11:29:47 2008 | | | | | | | |
| Surface Calibration | | | | | | | | | |
| Readings | | | | References | | | Results | | |
| Loop: | Air | Loop | | Air | Loop | | m | b | |
| Deep | 0.026 | 0.645 | V | 0.000 | 500.000 | mmho-m | 808.472 | -21.376 | |
| Medium | 0.030 | 0.770 | V | 0.000 | 550.000 | mmho-m | 743.584 | -22.316 | |
| Internal: | Zero | Cal | | Zero | Cal | | m | b | |
| Deep | 0.027 | 0.645 | V | 0.000 | 500.000 | mmho-m | 808.639 | -21.534 | |
| Medium | 0.030 | 0.770 | V | 0.000 | 550.000 | mmho-m | 743.302 | -22.248 | |
| Downhole Calibration | | | | | | | | | |
| Readings | | | | References | | | Results | | |
| Internal: | Zero | Cal | | Zero | Cal | | m | b | |

| | | | | | | | | |
|---------|--------|---------|--------|---------|---------|--------|---------|--------|
| Deep | -0.271 | 500.262 | mmho-m | 0.153 | 500.049 | mmho-m | 0.999 | 0.424 |
| Medium | -0.141 | 550.313 | mmho-m | -0.059 | 550.150 | mmho-m | 1.000 | 0.082 |
| Shallow | 2.528 | 0.036 | V | 500.000 | 2.000 | Ohm-m | 124.000 | -3.000 |

| Temperature Calibration Report | | | | | |
|--------------------------------|--|--------------------------|------|---------|---|
| Serial Number: | | 2542T | | | |
| Tool Model: | | CDLP | | | |
| Performed: | | Tue Aug 05 09:48:23 2008 | | | |
| | | Reference | | Reading | |
| Low Reference: | | 55.00 | degF | 3.11 | V |
| High Reference: | | 160.00 | degF | 5.35 | V |
| Gain: | | 46.88 | | | |
| Offset: | | -90.78 | | | |
| Delta Spacing | | 1 | | | |

| Compensated Density Calibration Report | | | | | |
|--|---------|------|-----------------------------|---------------|-----|
| Serial-Model: | | | 2542-T2 | | |
| Source / Verifier: | | | / | | |
| Master Calibration Performed: | | | Mon Jul 28 13:42:24 2008 | | |
| Master Calibration | | | | | |
| | Density | | Far Detector | Near Detector | |
| Magnesium | 1.710 | g/cc | 752.30 | 348.71 | cps |
| Aluminum | 2.590 | g/cc | 169.53 | 241.91 | cps |
| Spine Angle = 76.21 | | | Density/Spine Ratio = 0.574 | | |
| | Size | | Reading | | |
| Small Ring | 8.20 | in | 1.33 | V | |
| Large Ring | 14.00 | in | 2.67 | V | |

| Gamma Ray Calibration Report | | | | | | | | |
|------------------------------|--|--------------------------|----------|--|--|--|--|--|
| Serial Number: | | 2001 | | | | | | |
| Tool Model: | | OH | | | | | | |
| Performed: | | Thu Jul 24 15:21:22 2008 | | | | | | |
| Calibrator Value: | | 1.0 | GAPI | | | | | |
| Background Reading: | | 0.0 | cps | | | | | |
| Calibrator Reading: | | 1.0 | cps | | | | | |
| Sensitivity: | | 0.2500 | GAPI/cps | | | | | |

| Neutron Calibration Report | | | | | | | | |
|----------------------------|--|--------------------------|----------|--|--|--|--|--|
| Serial Number: | | 5108 | | | | | | |
| Tool Model: | | PROBE | | | | | | |
| Performed: | | Tue Aug 05 10:08:44 2008 | | | | | | |
| Calibrator Value: | | 1 | NAPI | | | | | |
| Calibrator Reading: | | 1 | cps | | | | | |
| Sensitivity: | | 1 | NAPI/cps | | | | | |

| Sensor | Offset (ft) | Schematic | Description | Len (ft) | OD (in) | Wt (lb) |
|--------|-------------|-----------|-------------|----------|---------|---------|
|--------|-------------|-----------|-------------|----------|---------|---------|

