



**SUPERIOR**  
Black Lick, Pa.  
Mercer, Pa.  
Wooster, Oh.  
Cleveland, Ok.  
Trinidad, Co.

# CEMENT BOND GAMMA RAY LOG

Company XTO Energy Inc.  
Well Hill Ranch 23-12  
Field Purgatorie River  
County Las Animas  
State CO

Company XTO Energy Inc.  
Well Hill Ranch 23-12  
Field Purgatorie River  
County Las Animas  
State CO

Location: API #: 05 071 09476 00  
2521' FSL & 577' FWL

Other Services

SEC 23 TWP 34S RGE 67W

Permanent Datum Ground Level Elevation 7785'  
Log Measured From Ground Level  
Drilling Measured From Ground Level

Elevation  
K.B. -----  
D.F. -----  
G.L. 7785'

Date 05-06-08

Run Number	Two		
Depth Driller	2450'		
Depth Logger	2322'		
Bottom Logged Interval	2316'		
Top Log Interval	Surface		
Open Hole Size	7 7/8"		
Type Fluid	Water		
Density / Viscosity	///		
Max. Recorded Temp.	132F		
Estimated Cement Top	360'		
Time Well Ready	ROA		
Time Logger on Bottom	12:20 PM		
Equipment Number	T0698		
Location	Trinidad		
Recorded By	W. Hargrove		
Witnessed By	Mr. Travis Gordon		

Borehole Record		Tubing Record					
Run Number	Bit	From	To	Size	Weight	From	To
Casing Record							
Surface String				8 5/8"		00	Bottom 467'
Prot. String							
Production String				5 1/2"		00	2437'
Liner							

<<< Fold Here >>>

All interpretations are opinions based on inferences from electrical or other measurements and we cannot and do not guarantee the accuracy or correctness of any interpretation, and we shall not, except in the case of gross or willful negligence on our part, be liable or responsible for any loss, costs, damages, or expenses incurred or sustained by anyone resulting from any interpretation made by any of our officers, agents or employees. These interpretations are also subject to our general terms and conditions set out in our current Price Schedule.

## Comments

Lorencito, follow main road past compressor 2.2 miles, take right (right just before XTO hill), @ Y stay right up hill, drive thru lorencito 14-19 location, @ Top of hill take hard left, drive thru Lorencito 9-24 location, take third left, drive thru one location, at Y stay straight, drive thru HREAST 14-14, drive thru HR 23-04, take next left, drive thru two locations, deadend on location.

Due to down hole conditions Tool Spikes From 2100'-2250' Repeated a few times while logging.



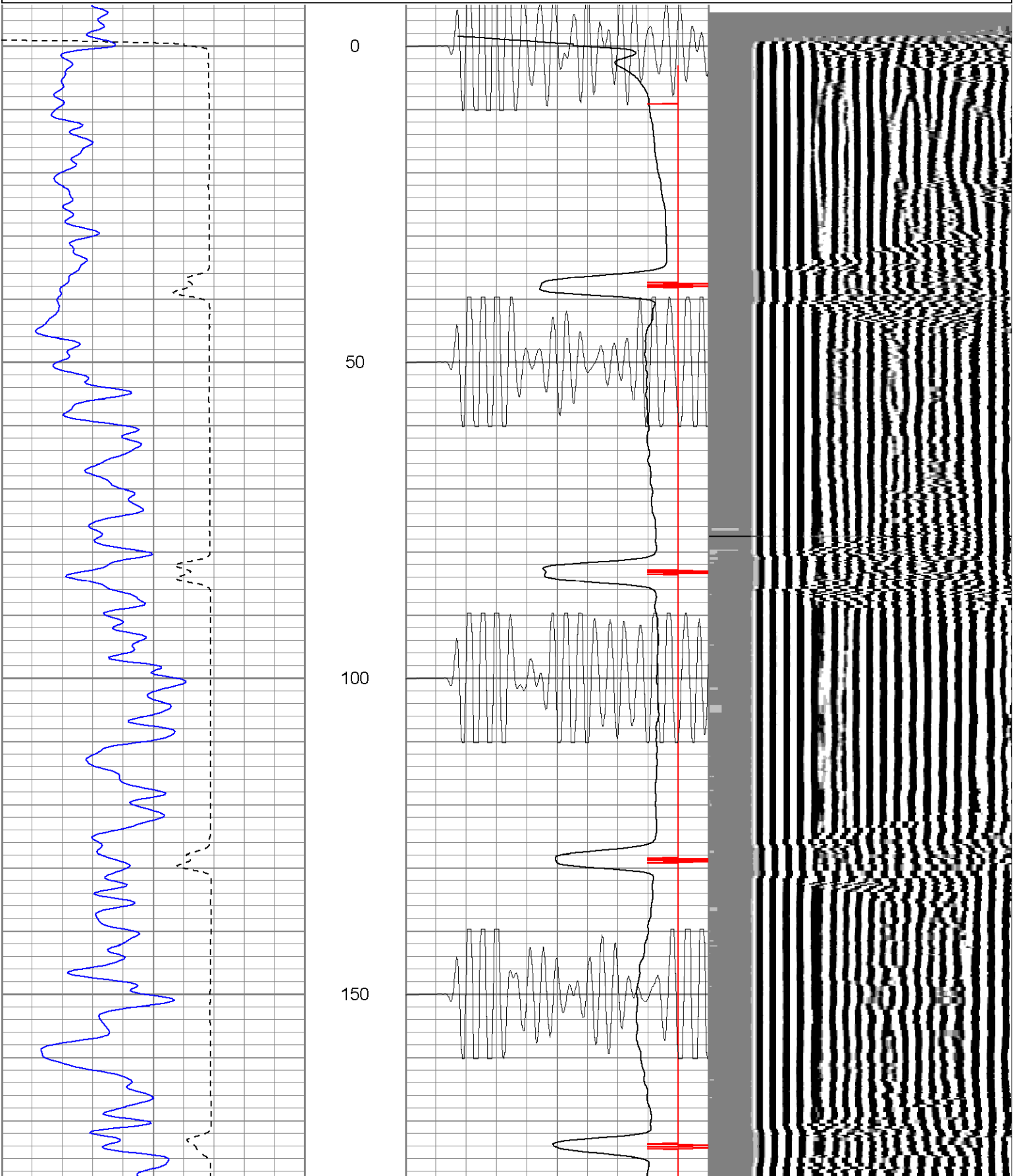
**SUPERIOR**

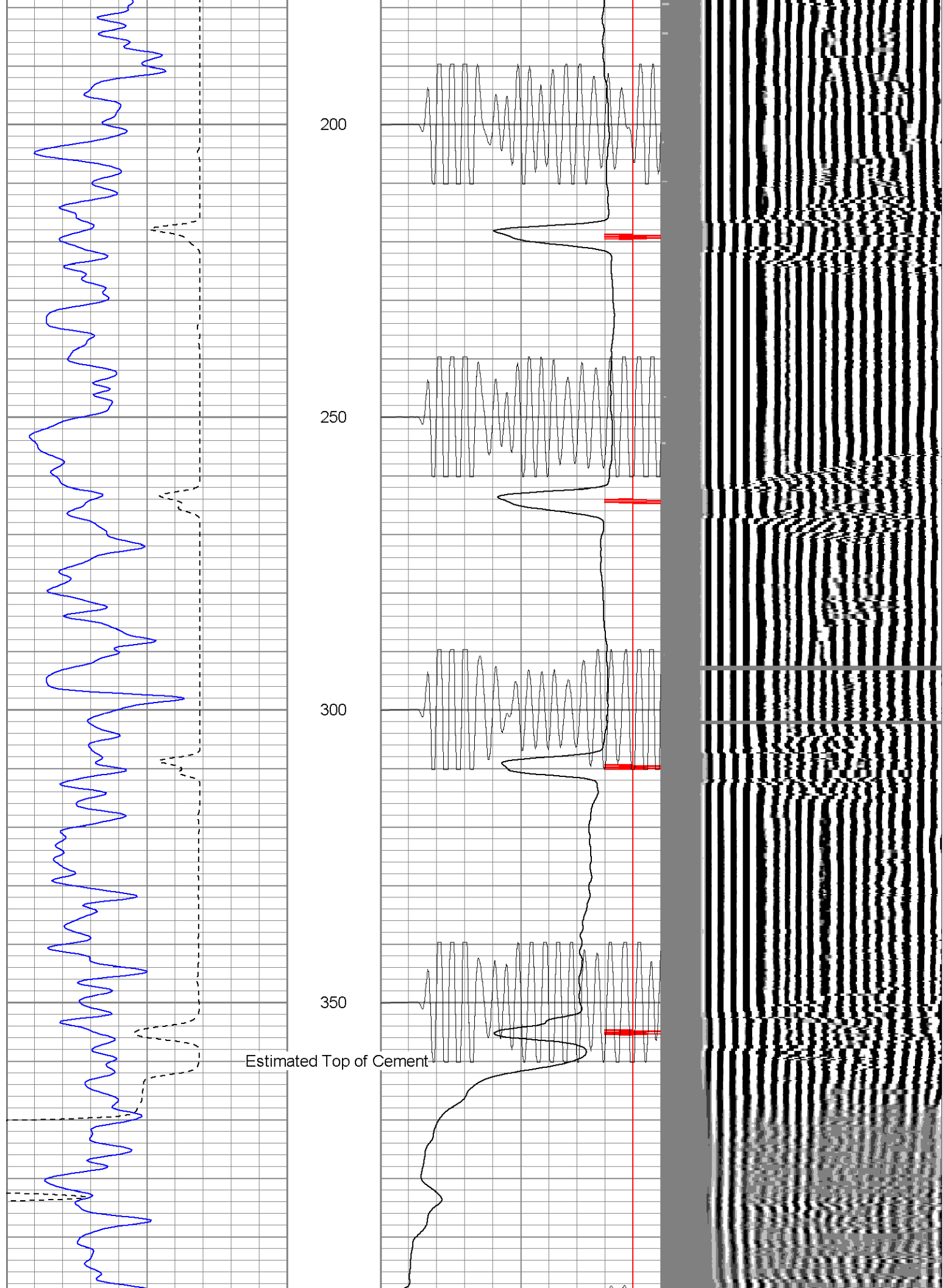
Black Lick, Pa.  
Mercer, Pa.  
Wooster, Oh.  
Cleveland, Ok.  
Trinidad, Co.

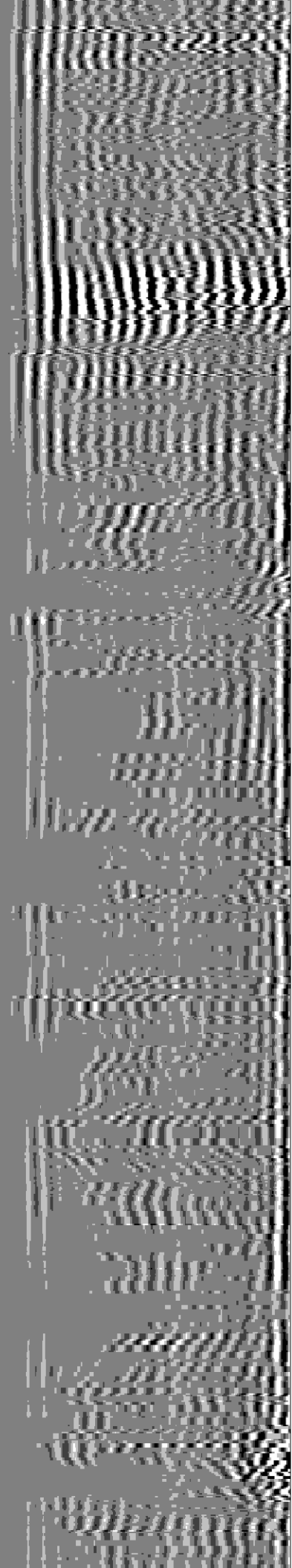
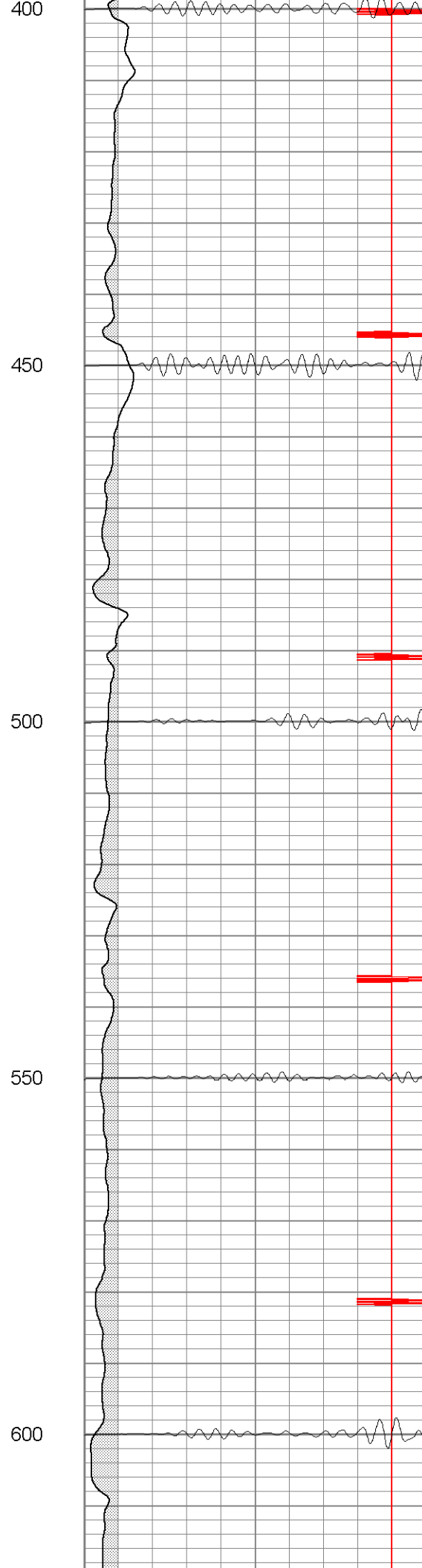
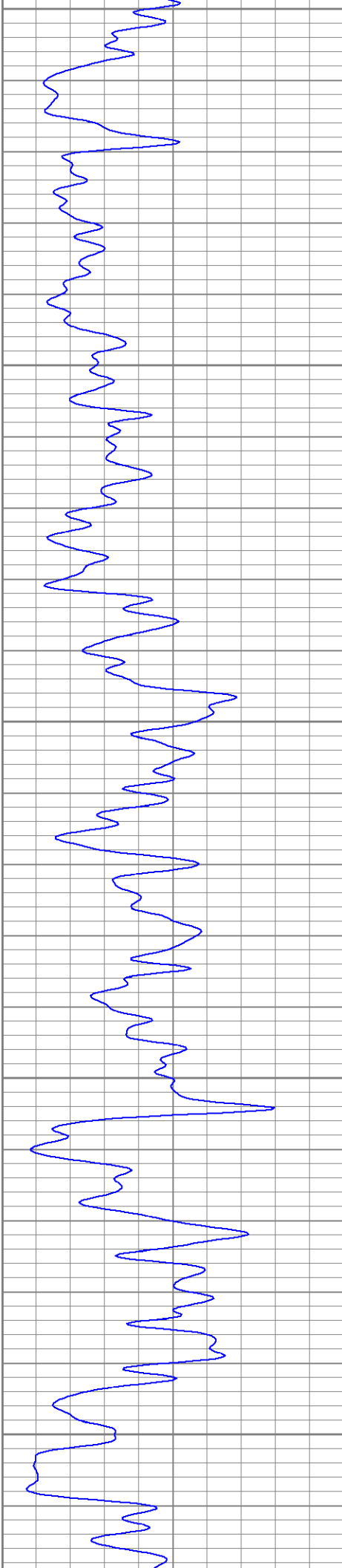
# Main Pass

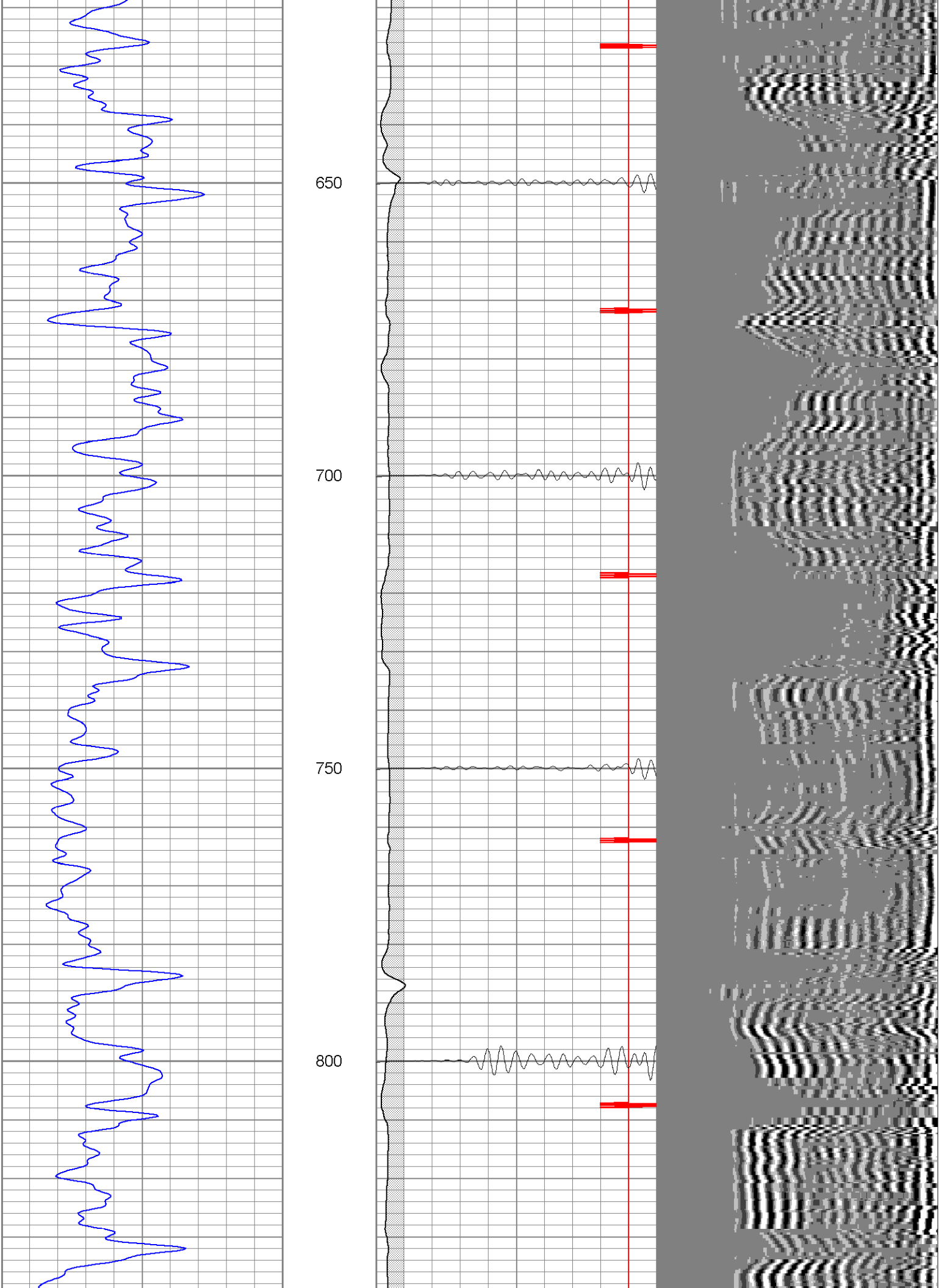
Database File: xtohr2312050608b.db  
Dataset Pathname: pass2.2  
Presentation Format: cblrt  
Dataset Creation: Tue May 06 13:45:53 2008  
Charted by: Depth in Feet scaled 1:240

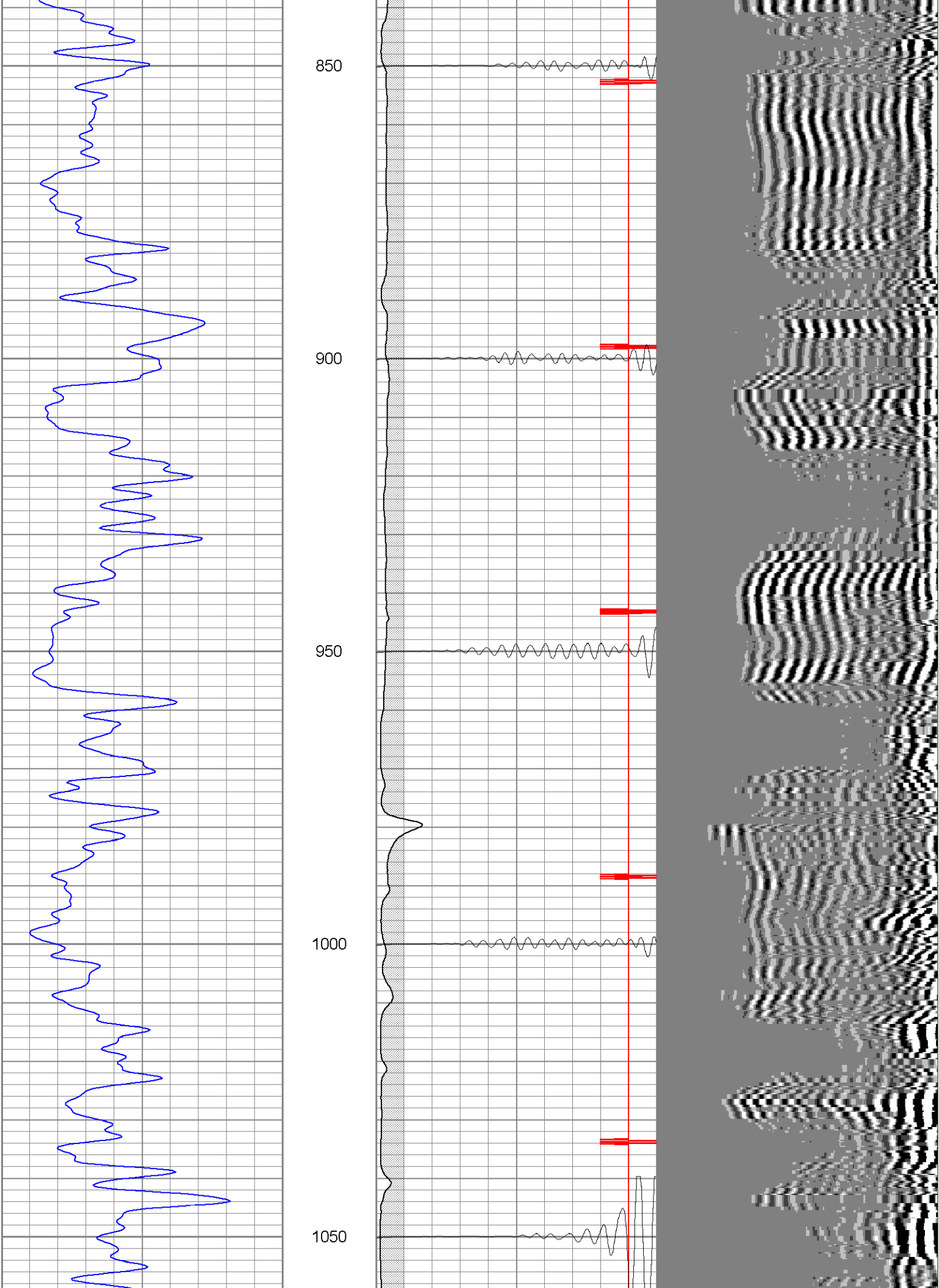
0	GR (GAPI)	200	0	AMP3 (mV)	100	200	Variable Density	1200
400	TT3 (usec)	200	18	CCL	-2			
			200	CBL5	1200			

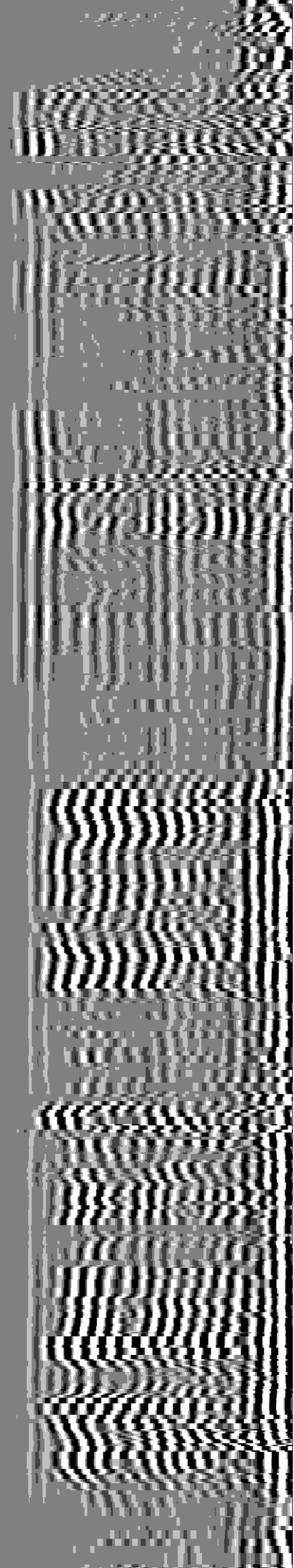
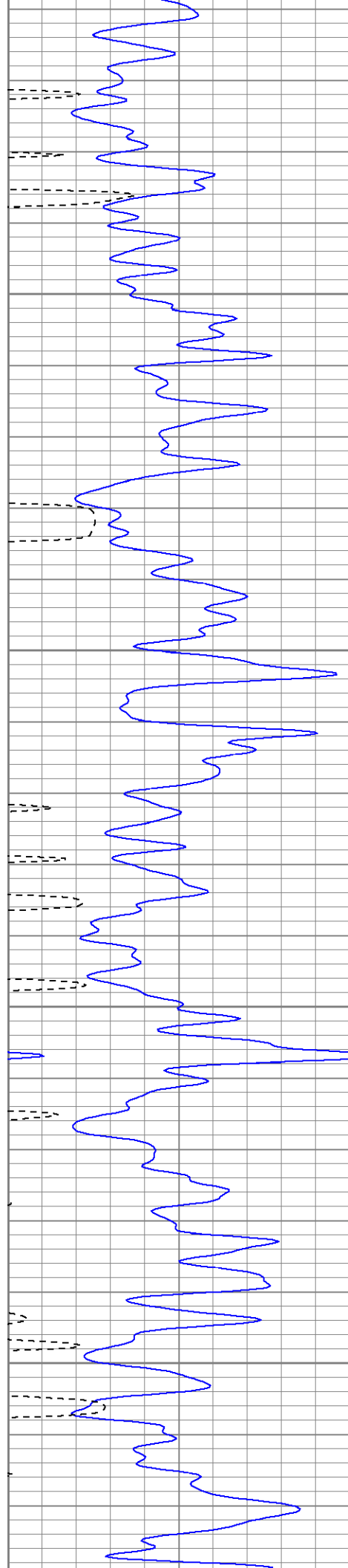




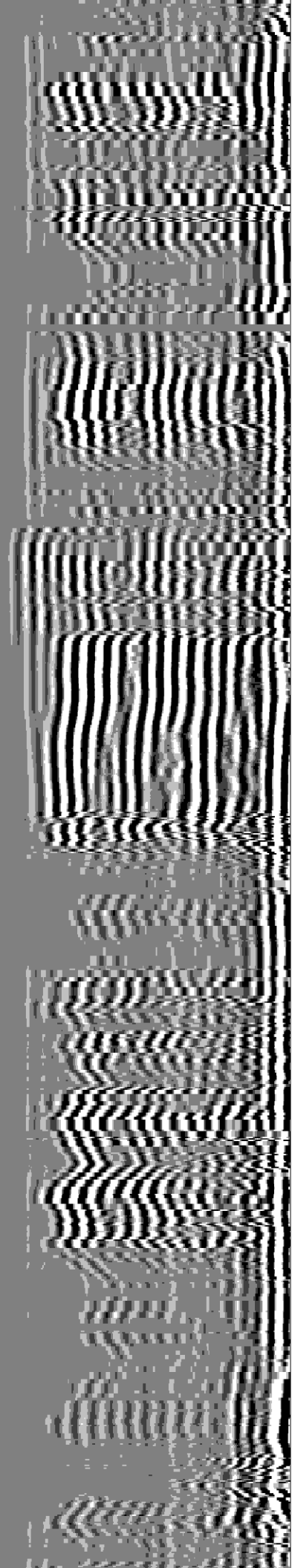
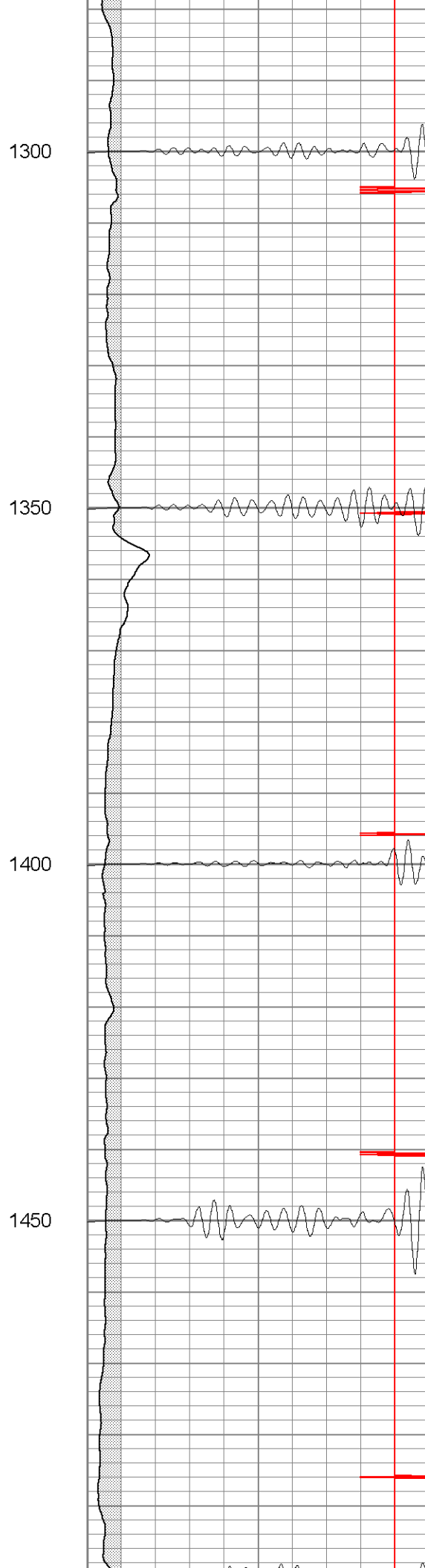
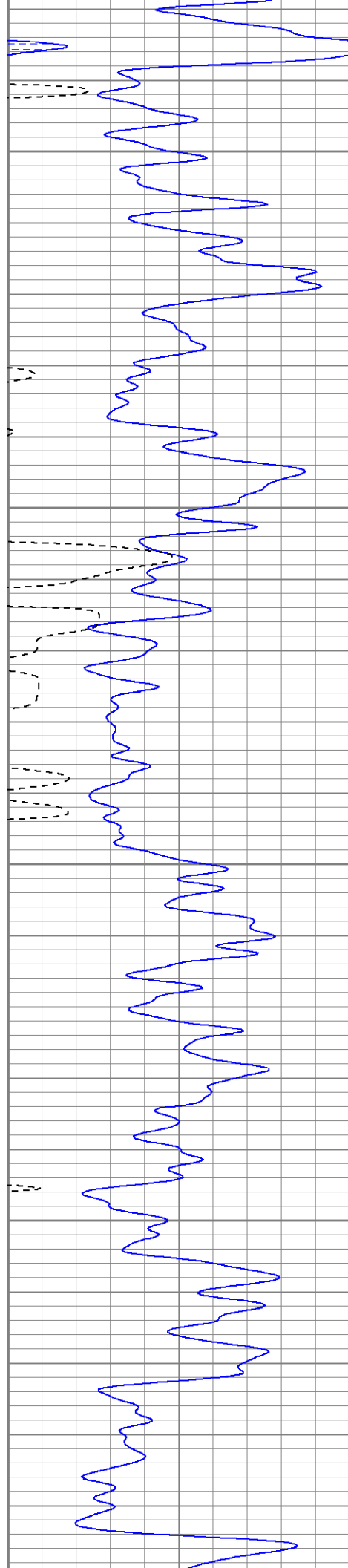




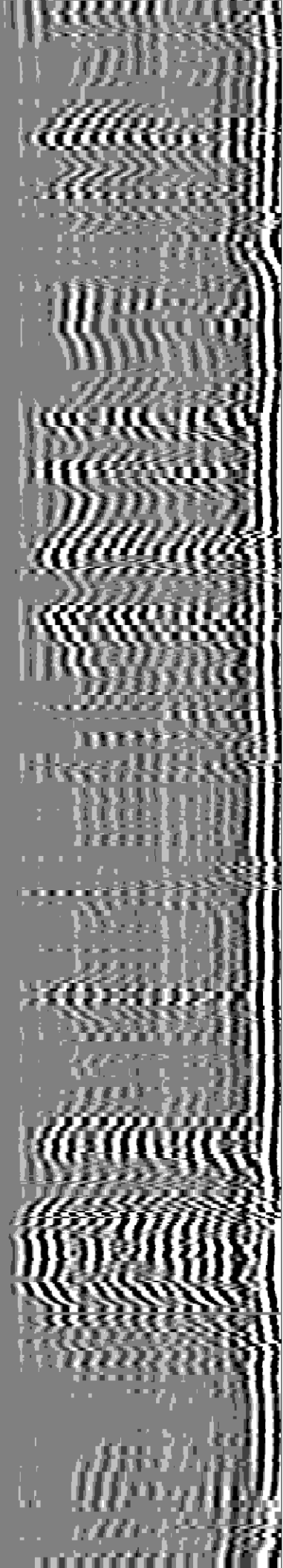
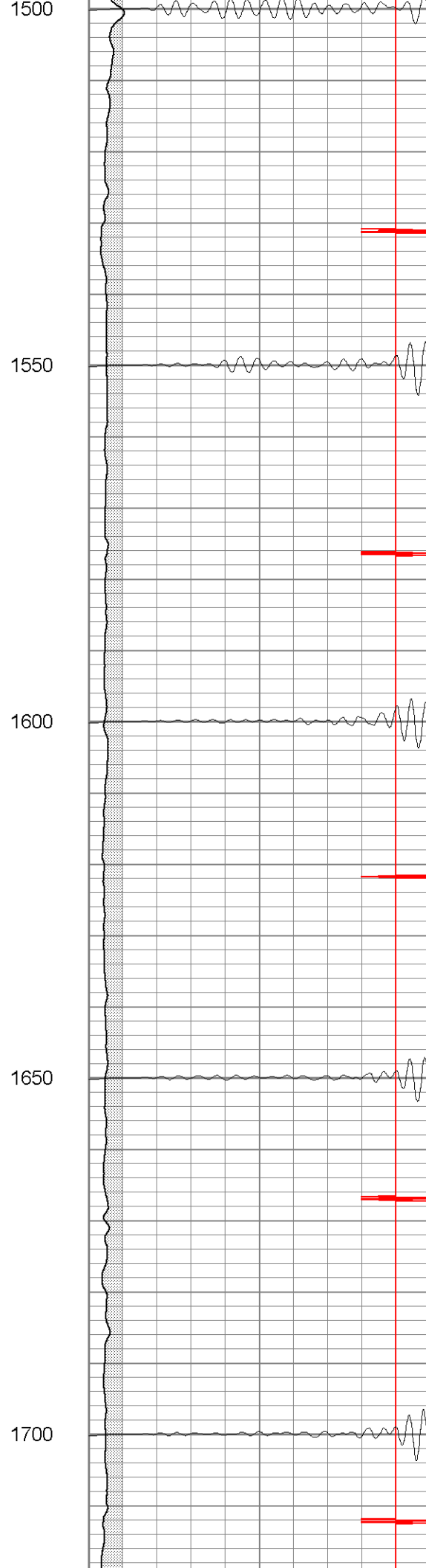
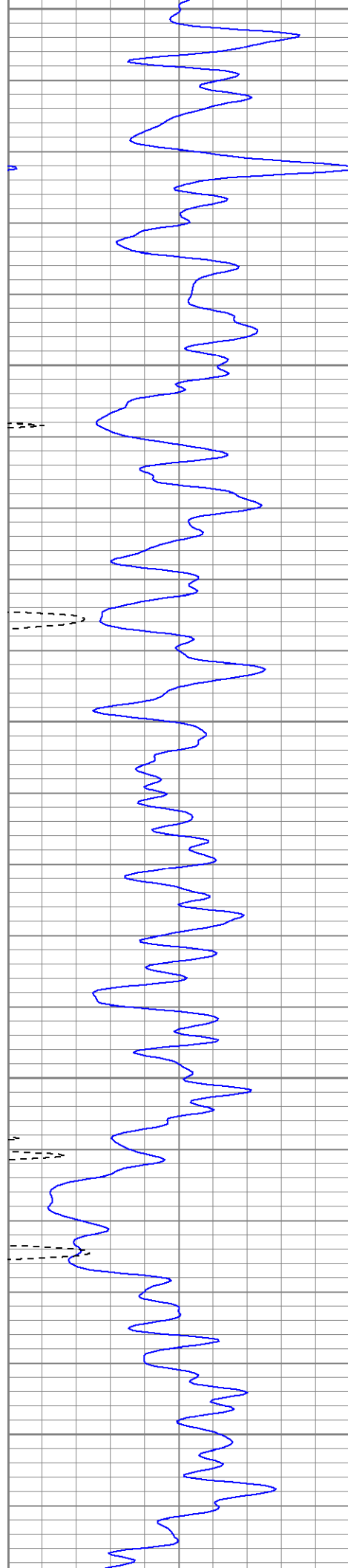


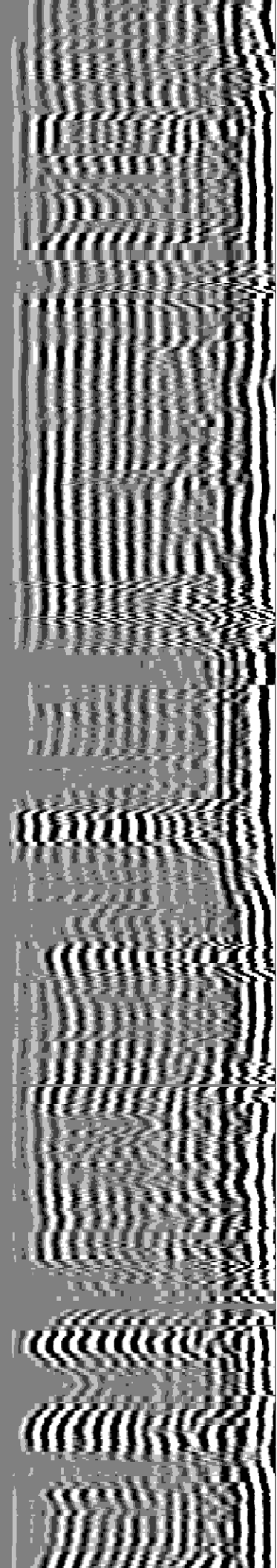
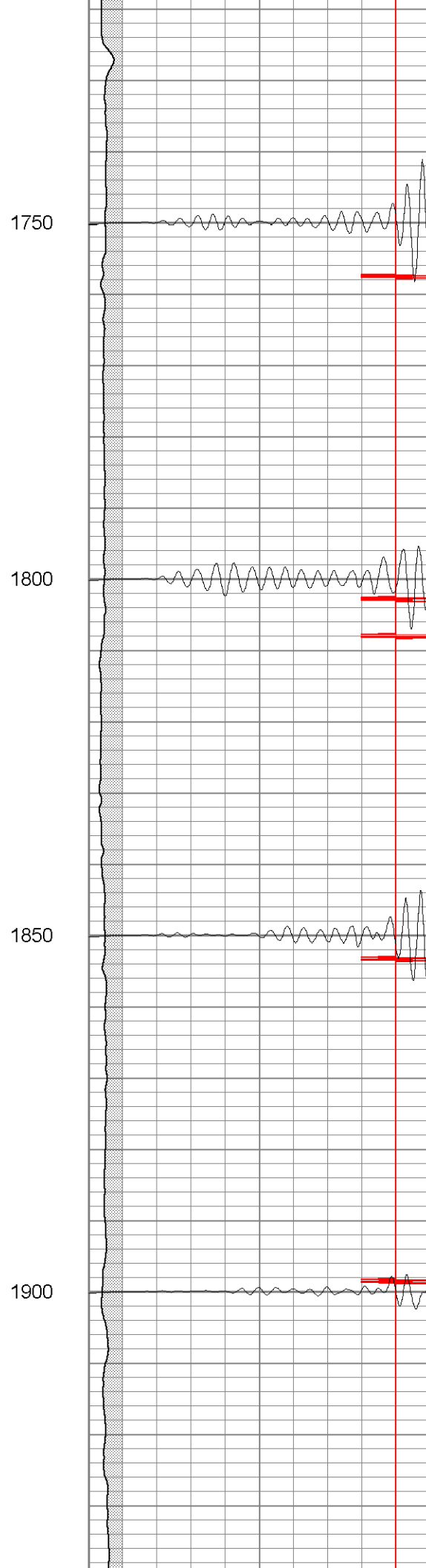
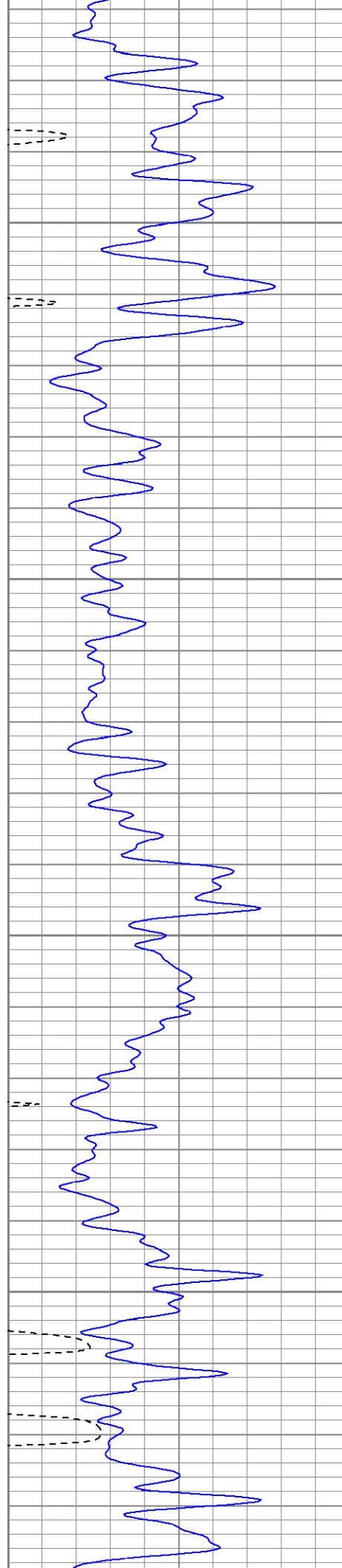


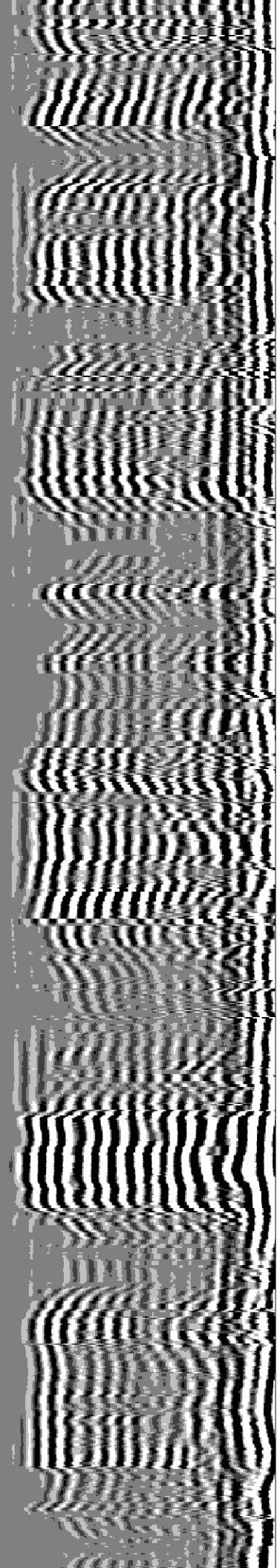
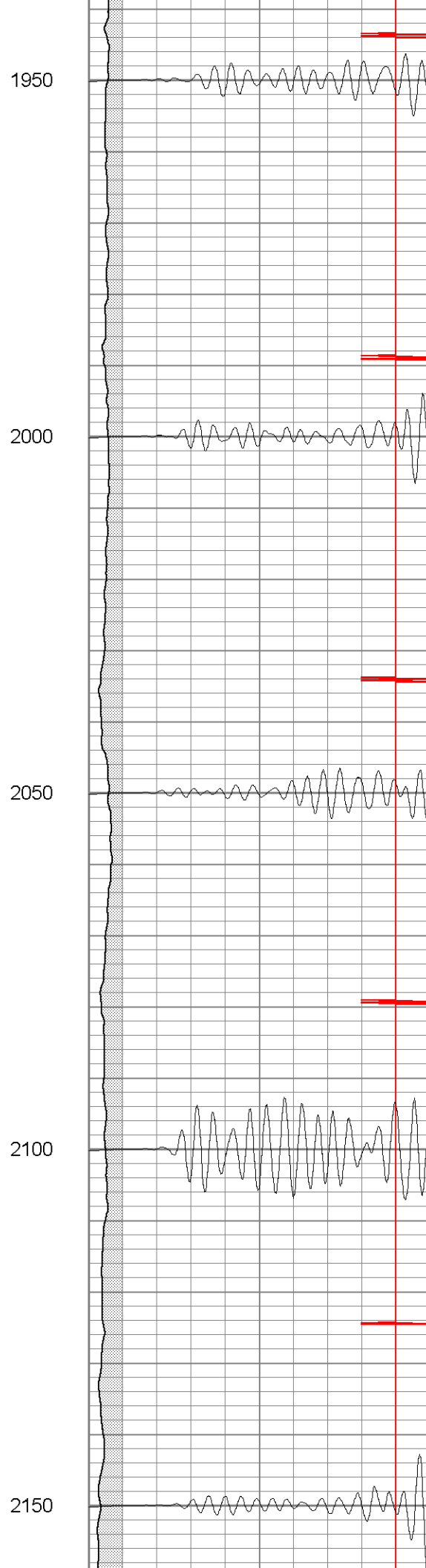
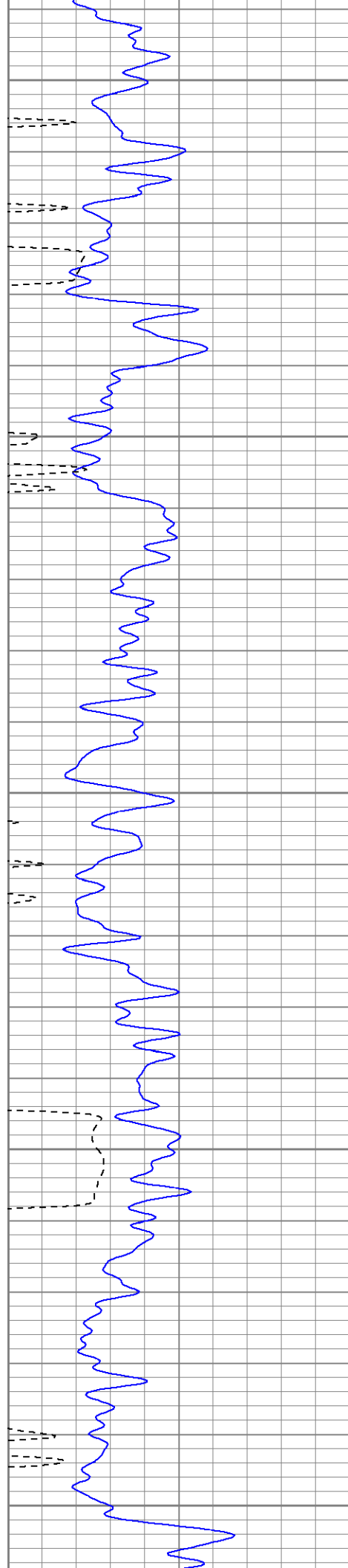


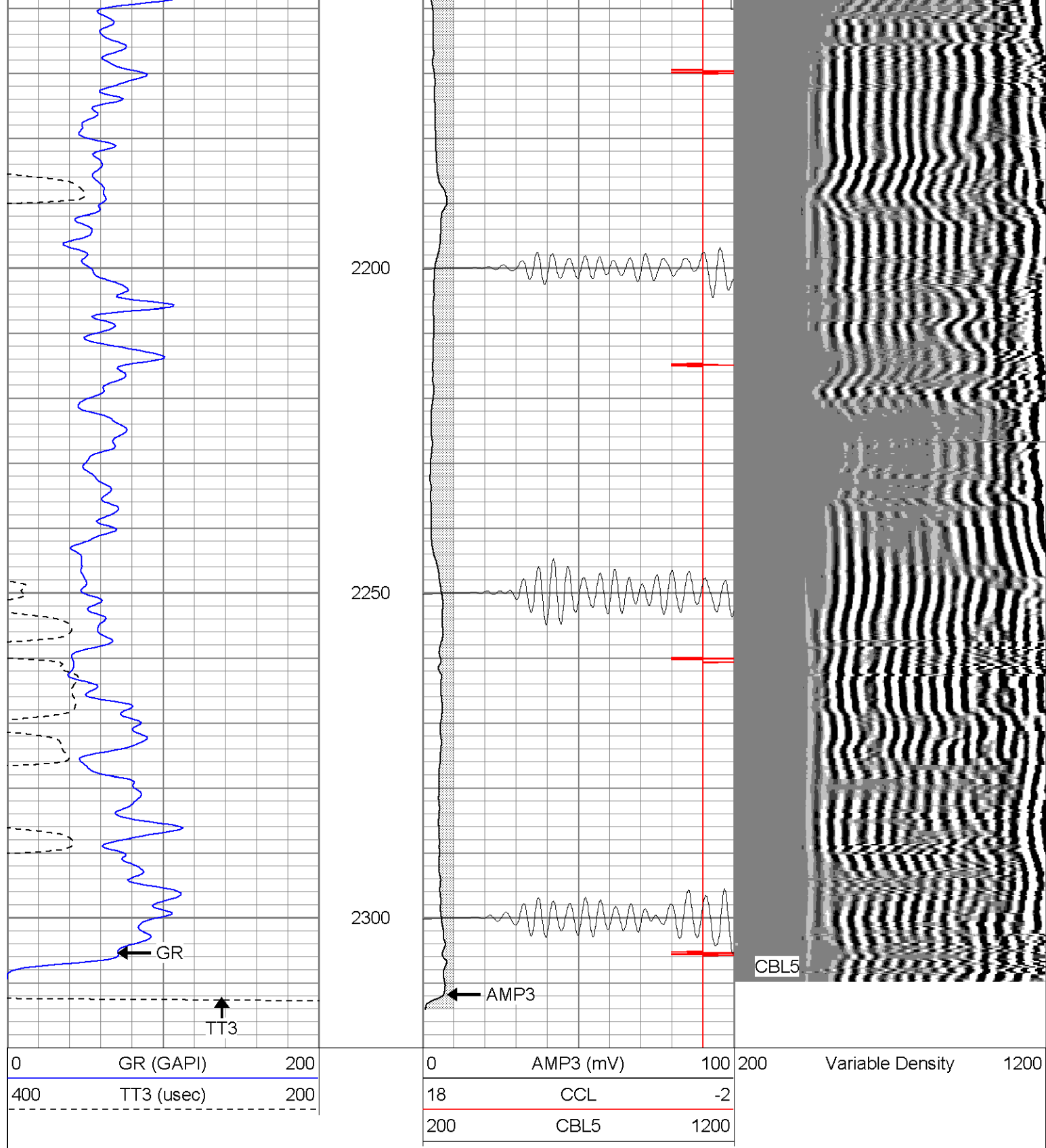












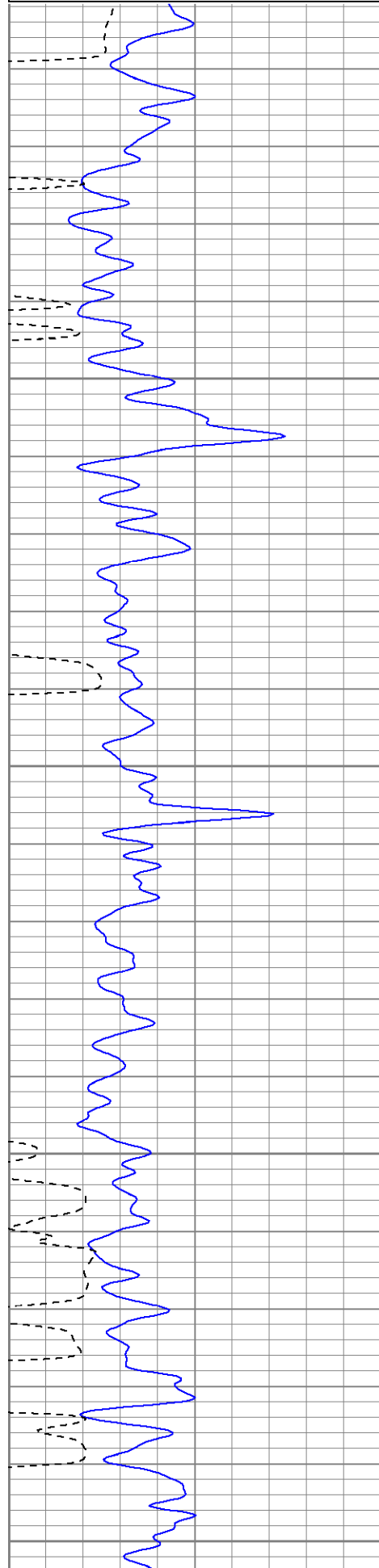
**SUPERIOR**

Black Lick, Pa.  
Mercer, Pa.  
Wooster, Oh.  
Cleveland, Ok.  
Trinidad, Co.

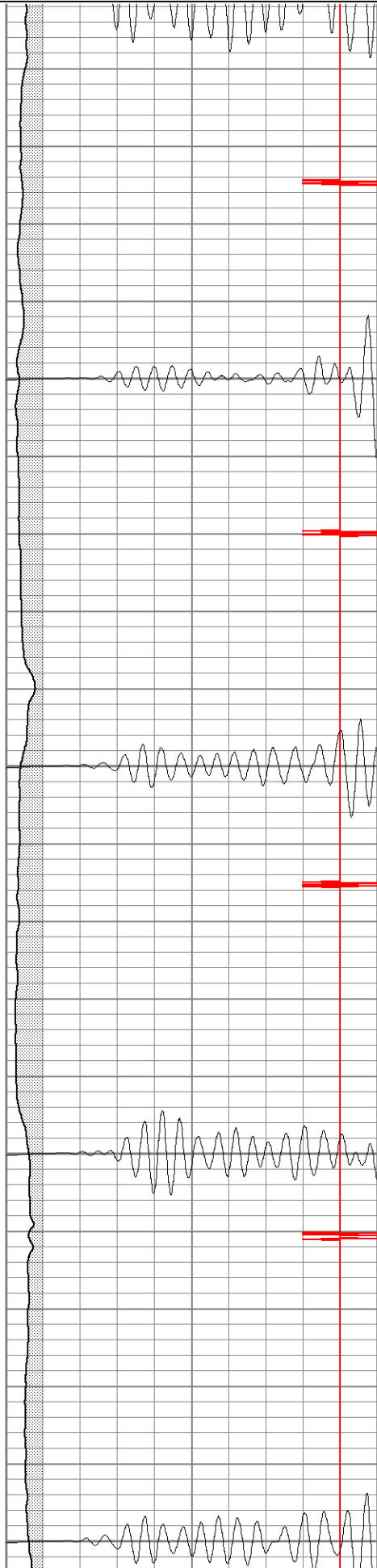
# Repeat Pass

Database File: xtahr2312050608b.db  
 Dataset Pathname: pass1.1  
 Presentation Format: cblrt  
 Dataset Creation: Tue May 06 13:47:23 2008 by Calc Open-Cased 070814  
 Charted by: Depth in Feet scaled 1:240

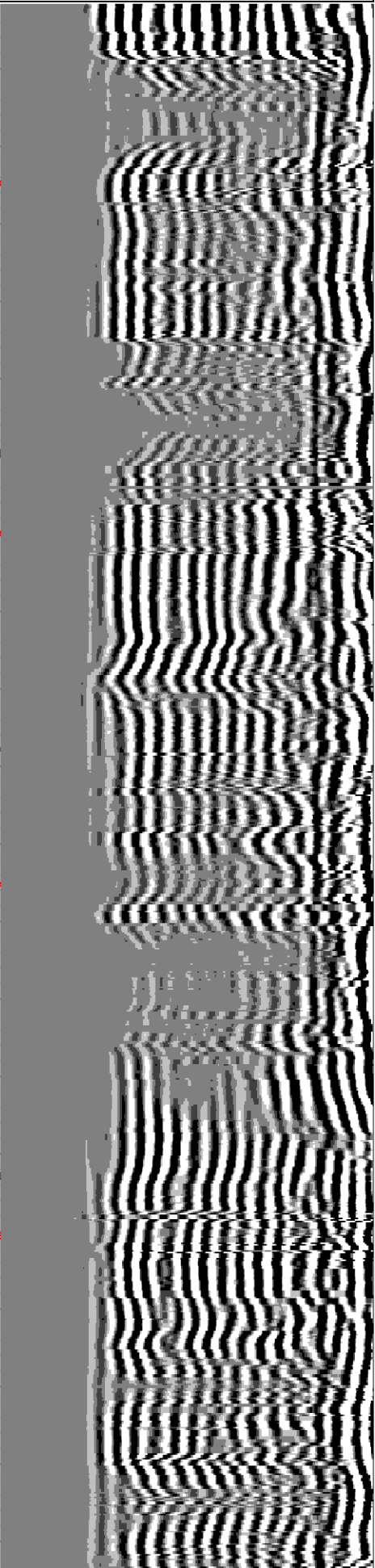
0	GR (GAPI)	200
400	TT3 (usec)	200

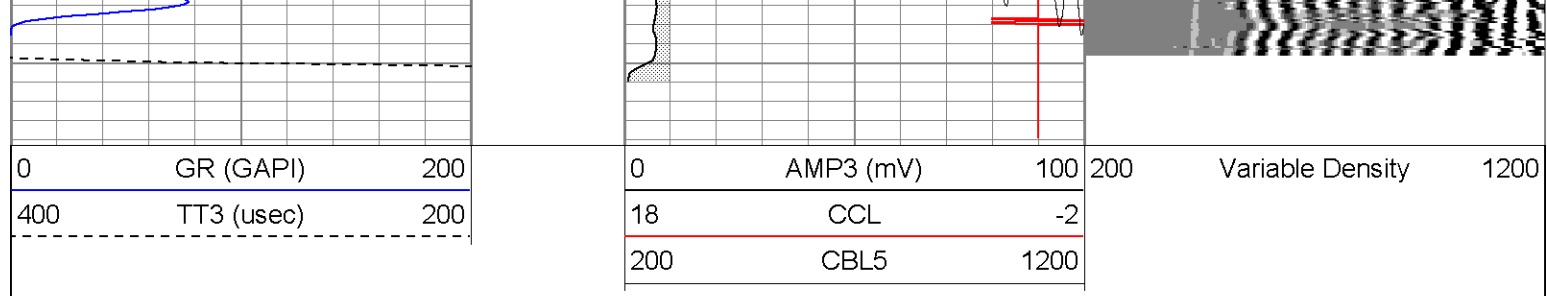


0	AMP3 (mV)	100
18	CCL	-2
200	CBL5	1200



200	Variable Density	1200
-----	------------------	------





Calibration Report					
Database File:		xtohr2312050608b.db			
Dataset Pathname:		pass1			
Dataset Creation:		Tue May 06 12:11:58 2008 by Log Open-Cased 070814			
Cement Bond Log Calibration Report					
Serial Number:		Titan6			
Tool Model:		T6			
Performed:		Mon May 05 14:41:16 2008			
Depth:		1272.56	ft		
Casing Diameter:		5.5	in		
		3' Spacing		5' Spacing	
Signal Zero:		0		0	mV
Calibrated Amplitude:		85		85	mV
Reading at Signal Zero:		0.0158203		0.0169922	V
Reading in Free Pipe:		1.62		1.63	V
Gain:		52.9866		52.6966	
Offset:		1		0	
Gamma Ray Calibration Report					
Serial Number:		Titan6			
Tool Model:		T6			
Performed:		Mon May 05 17:43:56 2008			
Calibrator Value:		0.0		GAPI	
Background Reading:		1.0		cps	
Calibrator Reading:		0.0		cps	
Sensitivity:		1.1000		GAPI/cps	

Sensor	Offset (ft)	Schematic	Description	Len (ft)	OD (in)	Wt (lb)
GR	13.64		CHD-None (0)	0.75	1.50	5.00
			GR-T6 (Titan6)	2.52	2.25	25.00
WVF5	9.49		CBL-T6 (Titan6)	7.23	2.25	110.00
WVF3	8.49					

