



SUPERIOR
Black Lick, Pa.
Mercer, Pa.
Wooster, Oh.
Cleveland, Ok.
Trinidad, Co.

DUAL INDUCTION LOG

Company XTO Energy Inc.
Well Hill Ranch 23-04
Field Purgatorie River
County Las Animas State CO

Location: API # : 071-09477-00

321" FNL & 660' FWL

SEC 23 TWP 34S RGE 67W

Permanent Datum Ground level Elevation 7792'
Log Measured From Ground Level
Drilling Measured From Ground Level

Other Services
CDL
NEU

Elevation

K.B. -----
D.F. -----
G.L. 7792'

Date 4-22-08

Run Number One

Depth Driller 2460'

Depth Logger 2442'

Bottom Logged Interval 2440'

Top Log Interval Surface Casing

Casing Driller 8.625@470'

Casing Logger 470'

Bit Size 7.875"

Type Fluid in Hole Water

Density / Viscosity ///

pH / Fluid Loss ///

Source of Sample ///

Rm @ Meas. Temp ///

Rmf @ Meas. Temp ///

Rmc @ Meas. Temp ///

Source of Rmf / Rmc ///

Rm @ BHT ///

Time Circulation Stopped 3:00 PM

Time Logger on Bottom 5:00 PM

Maximum Recorded Temperature 110 DEG F

Equipment Number T0700

Location Trinidad

Recorded By Karl Lucero

Witnessed By Mr. Dalton King

<<< Fold Here >>>

All interpretations are opinions based on inferences from electrical or other measurements and we cannot and do not guarantee the accuracy or correctness of any interpretation, and we shall not, except in the case of gross or willful negligence on our part, be liable or responsible for any loss, costs, damages, or expenses incurred or sustained by anyone resulting from any interpretation made by any of our officers, agents or employees. These interpretations are also subject to our general terms and conditions set out in our current Price Schedule.

Comments

Well Directions:

Lorencito 2.2 miles past Compressor station take right, at Y stay right up hill, At top of hill take left, take third left, drive through HRE 14-14, down hill 1st drive through location.



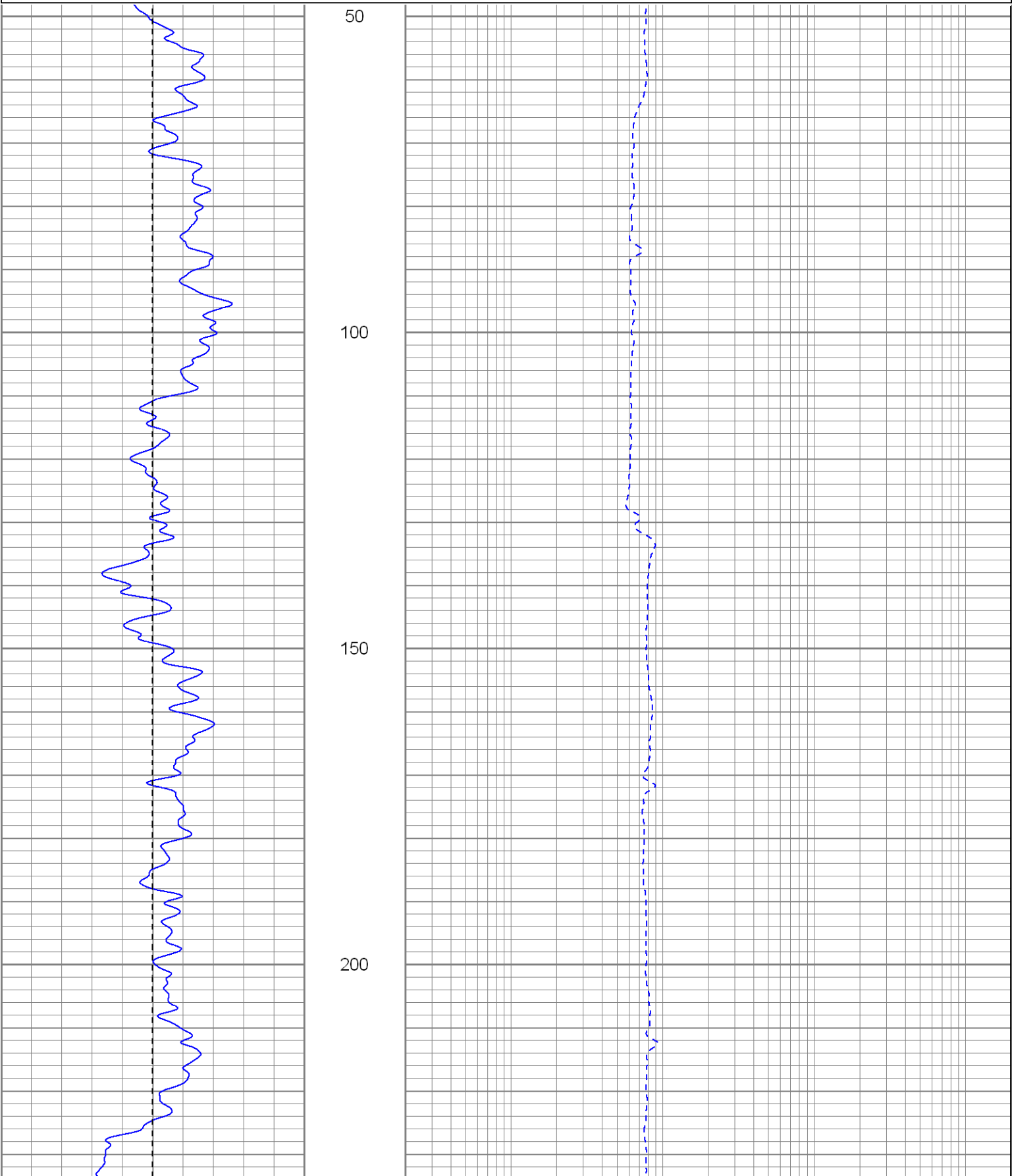
SUPERIOR

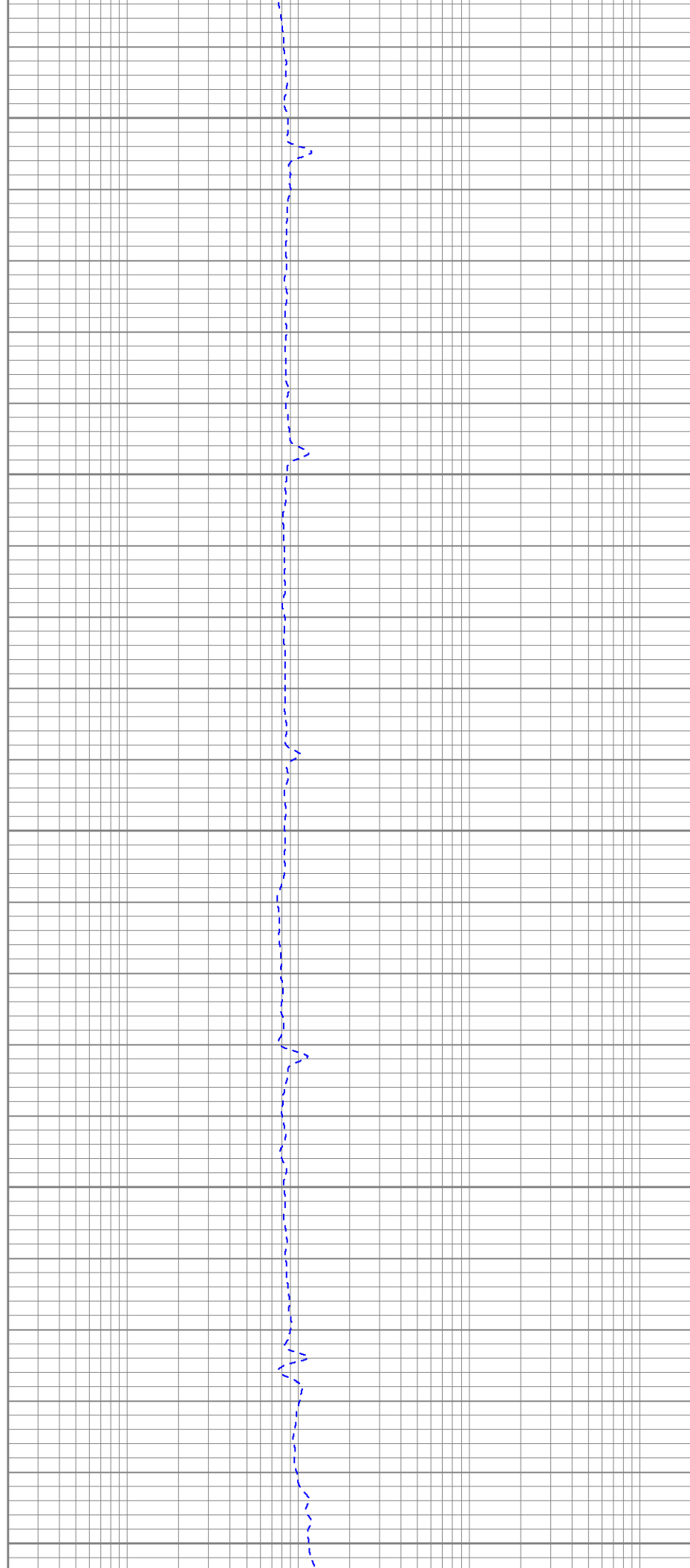
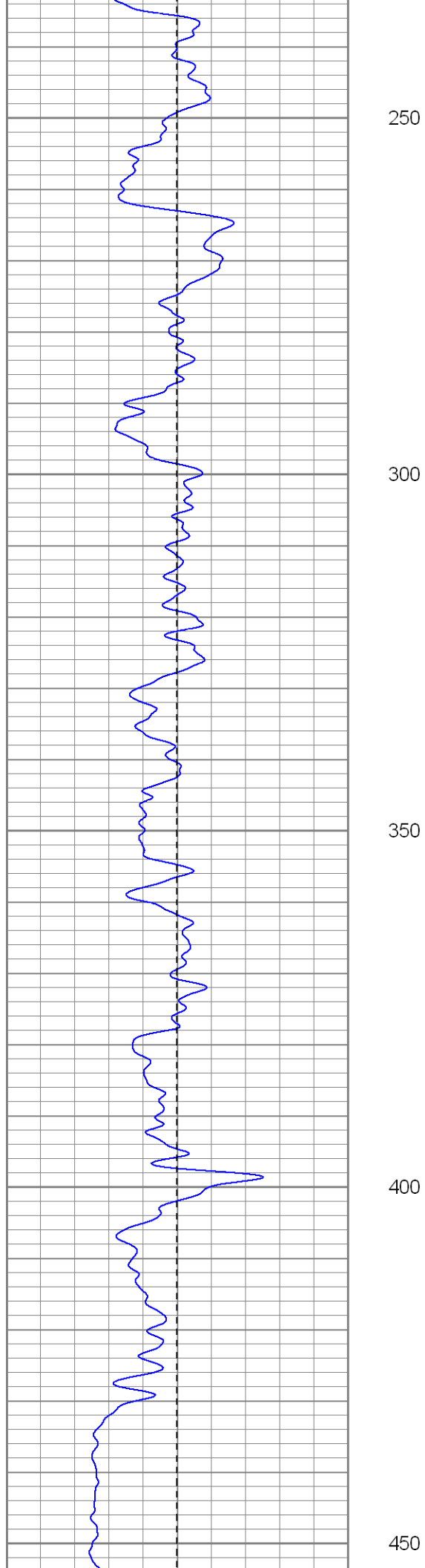
Black Lick, Pa.
Mercer, Pa.
Wooster, Oh.
Cleveland, Ok.
Trinidad, Co.

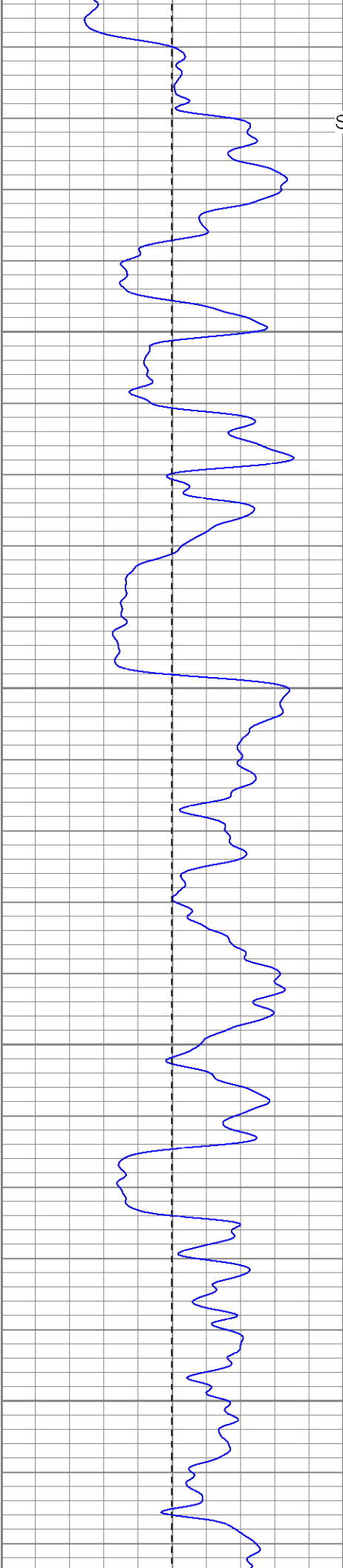
Main Pass

Database File:	xtohreast2304.db
Dataset Pathname:	pass2.1
Presentation Format:	dil
Dataset Creation:	Tue Apr 22 18:48:36 2008 by Calc Open-Cased 070814
Charted by:	Depth in Feet scaled 1:240

0	GR (GAPI)	200	0.2	RILD (Ohm-m)	2000
-100	SP (mV)	100	0.2	RILM (Ohm-m)	2000
			0.2	RLL3 (Ohm-m)	2000







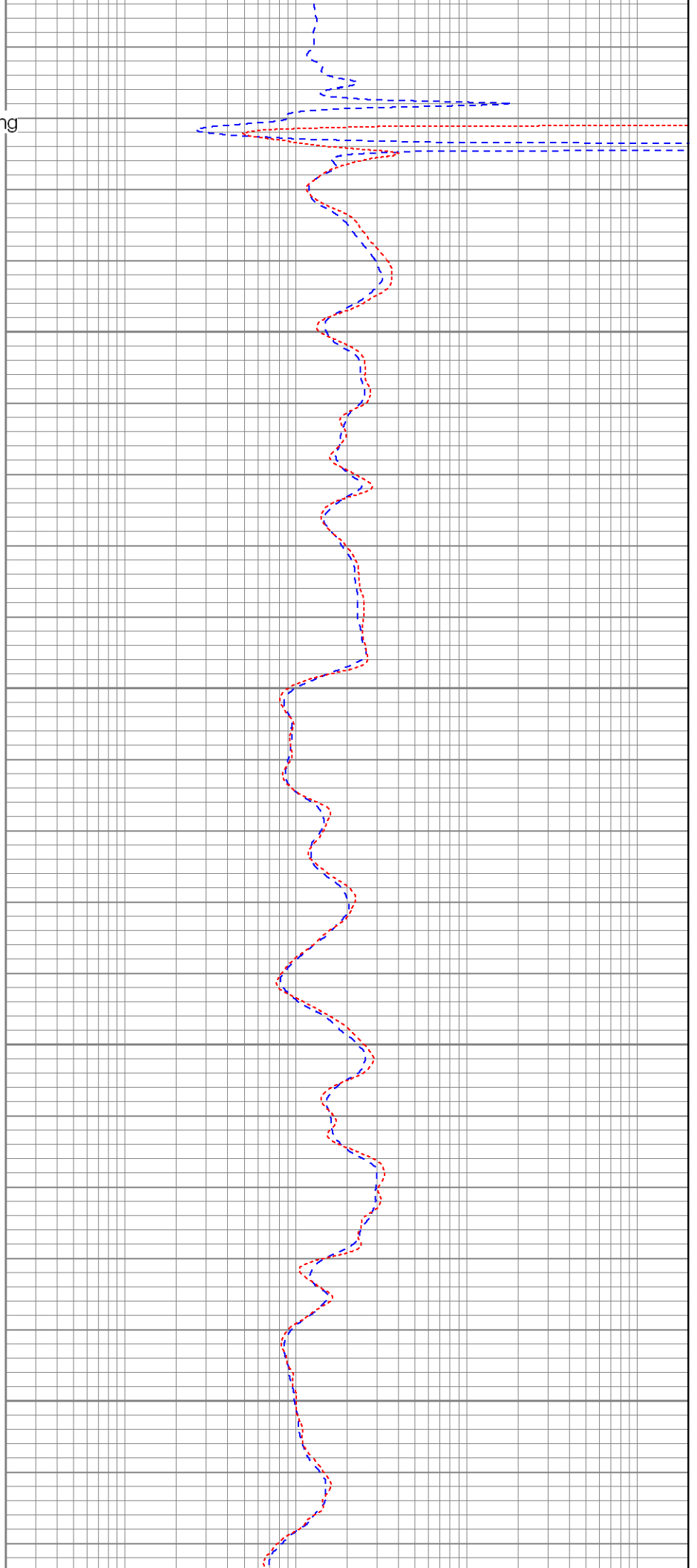
Surface Casing

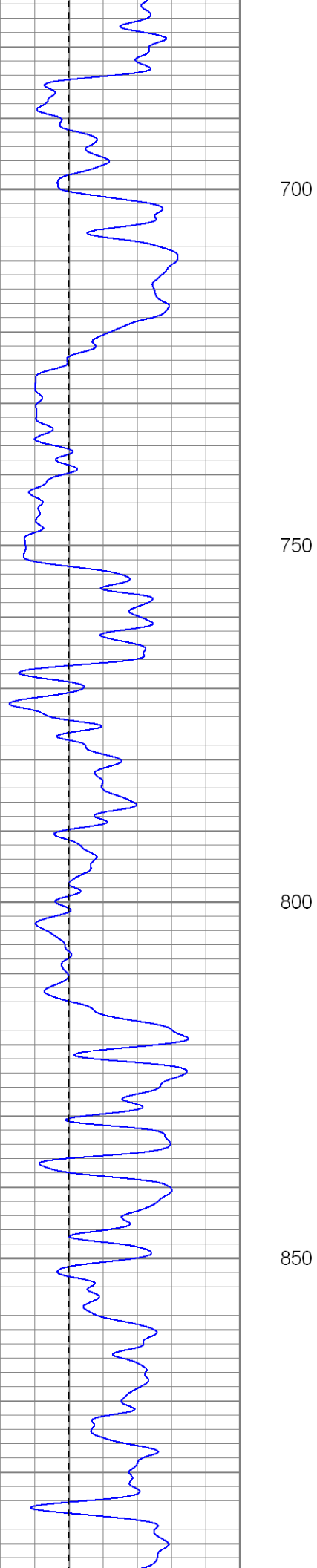
500

550

600

650





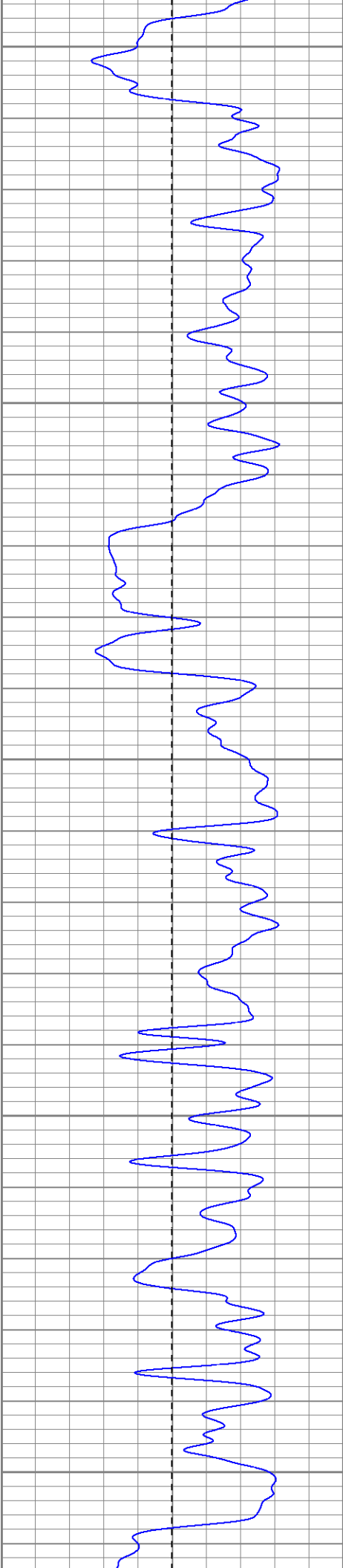
700

750

800

850





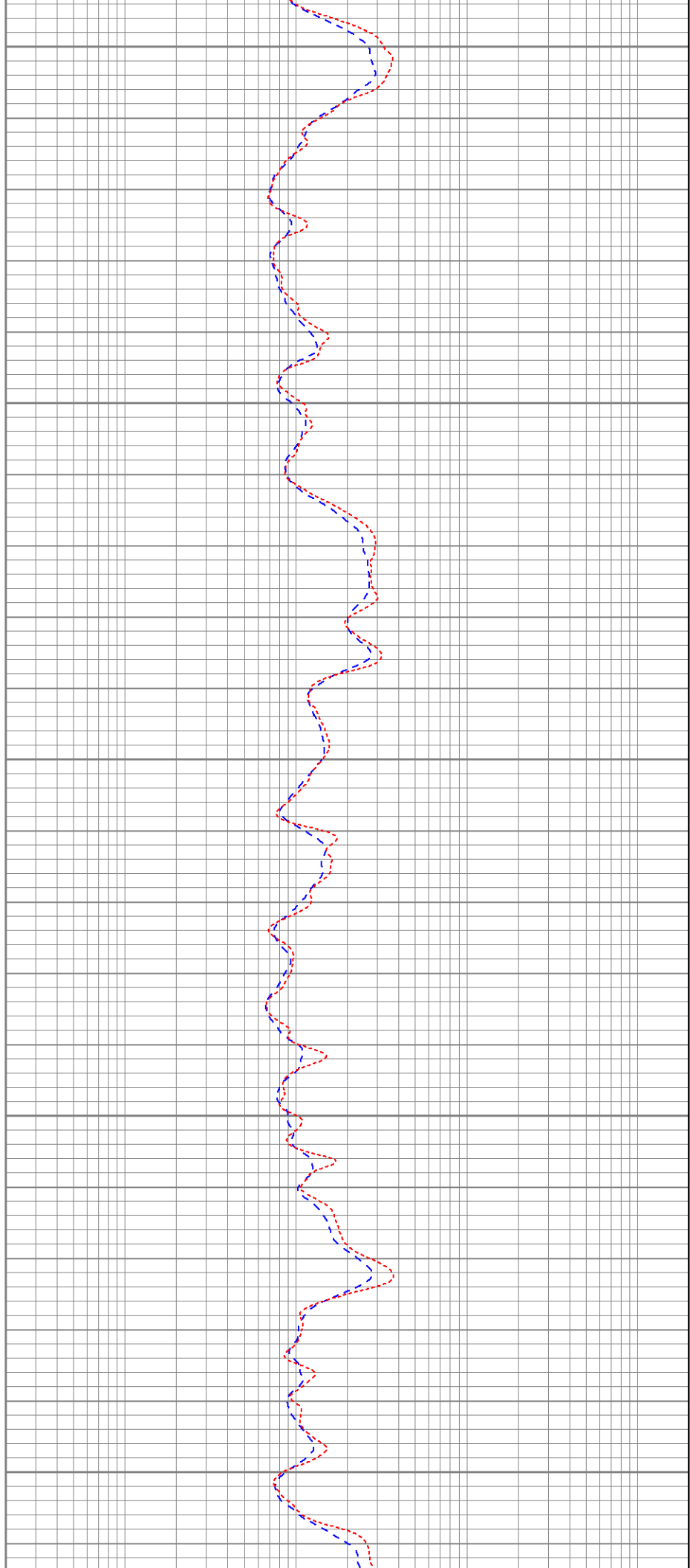
900

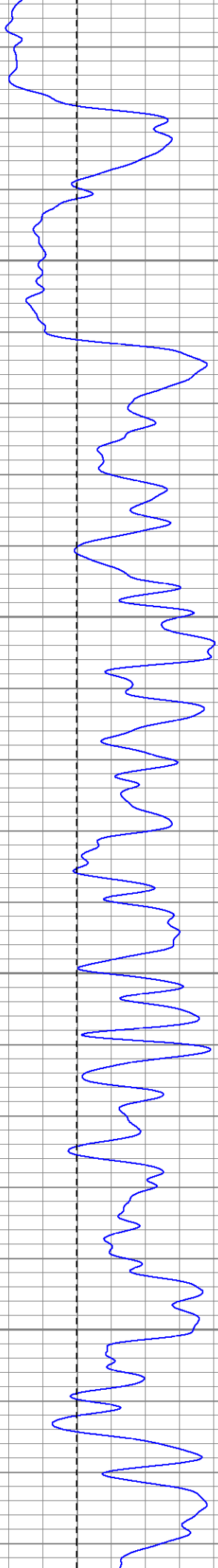
950

1000

1050

1100



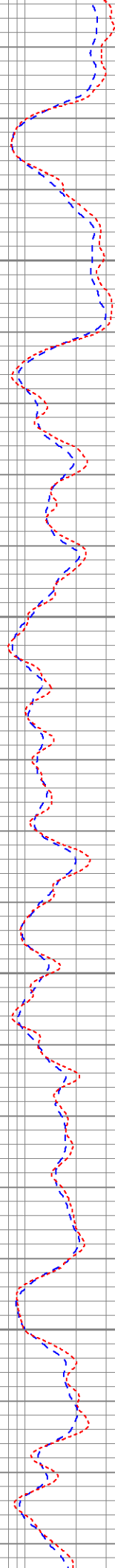


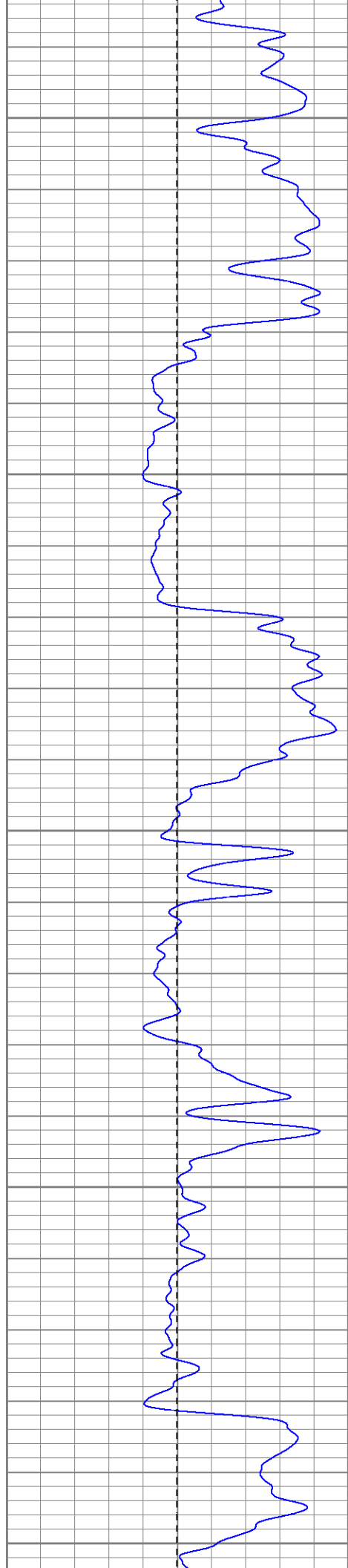
1150

1200

1250

1300





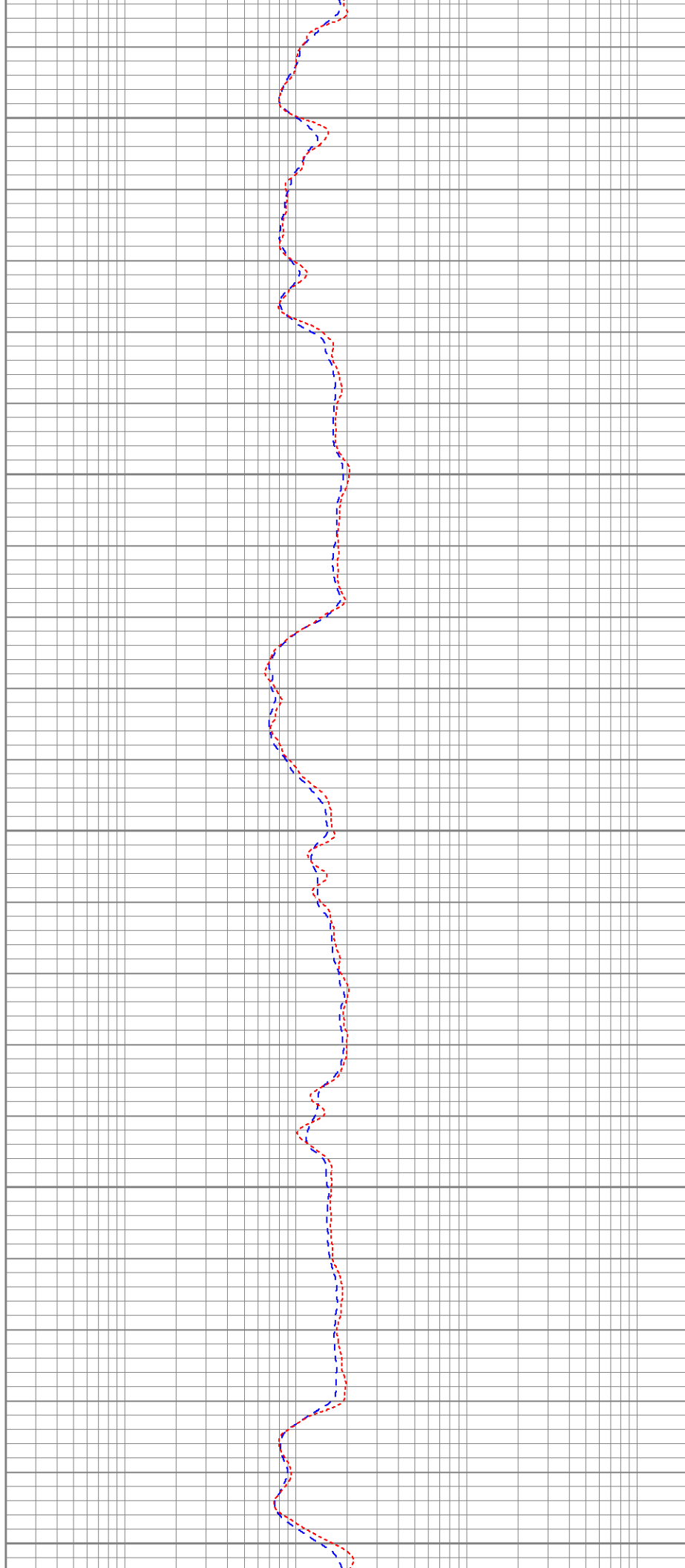
1350

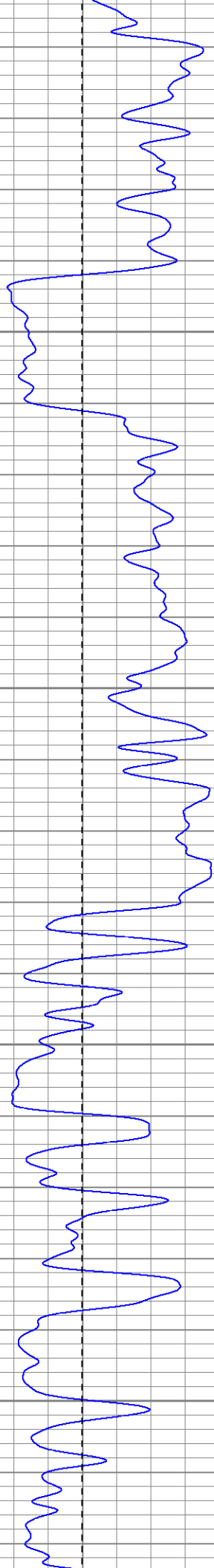
1400

1450

1500

1550



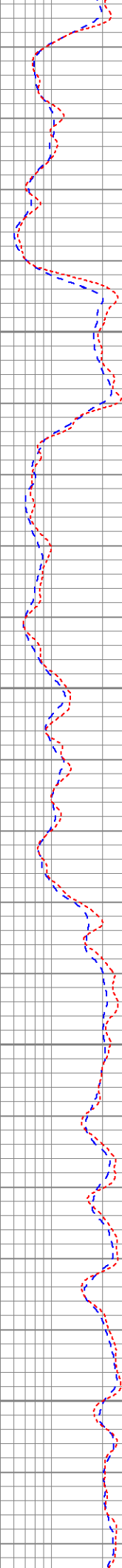


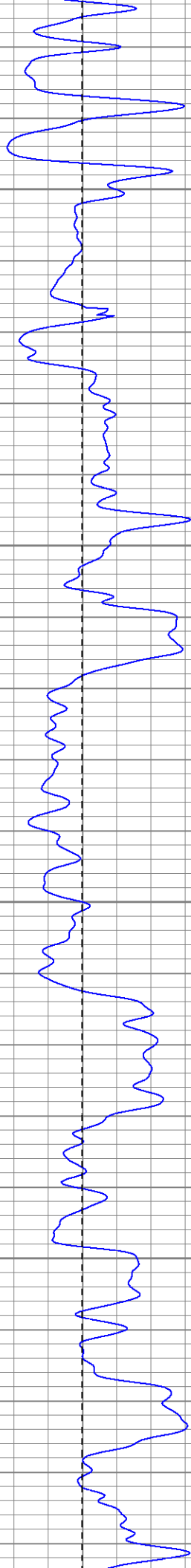
1600

1650

1700

1750



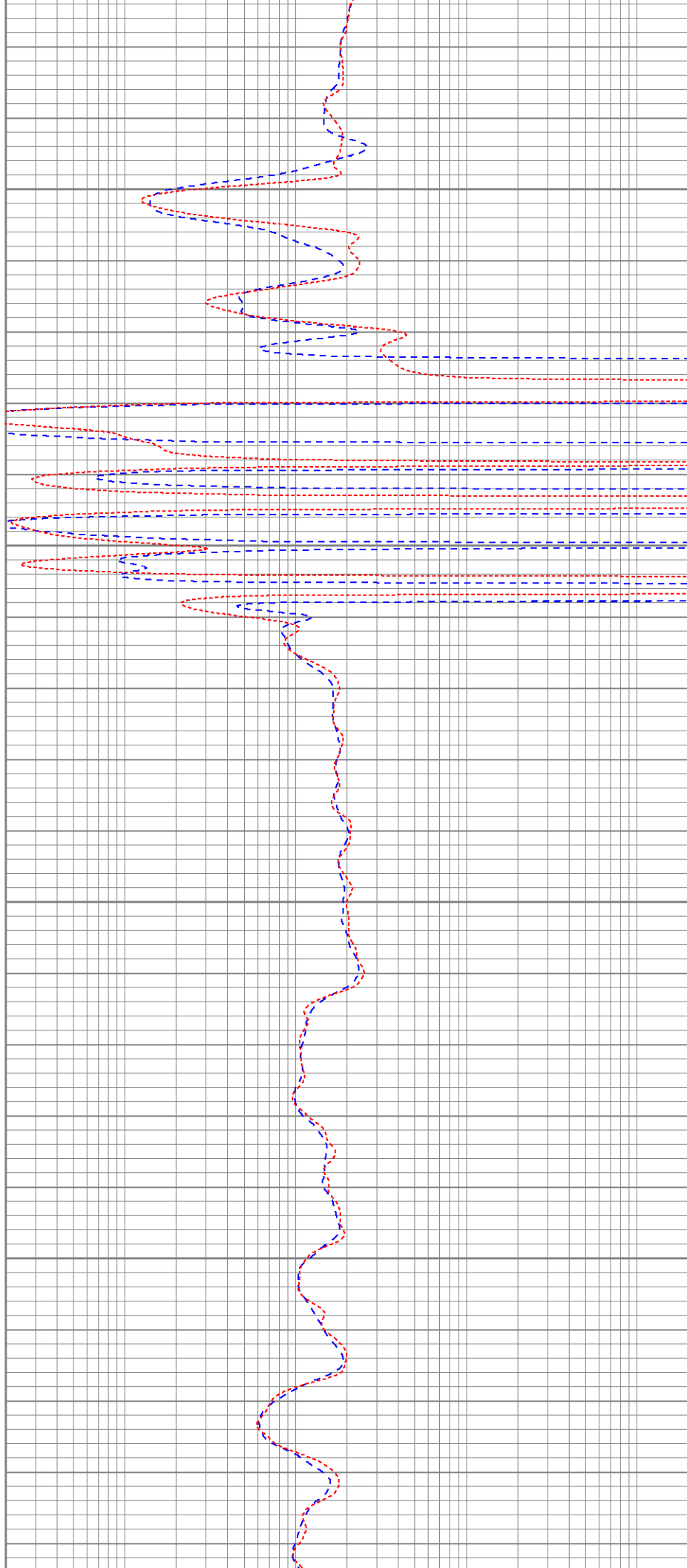


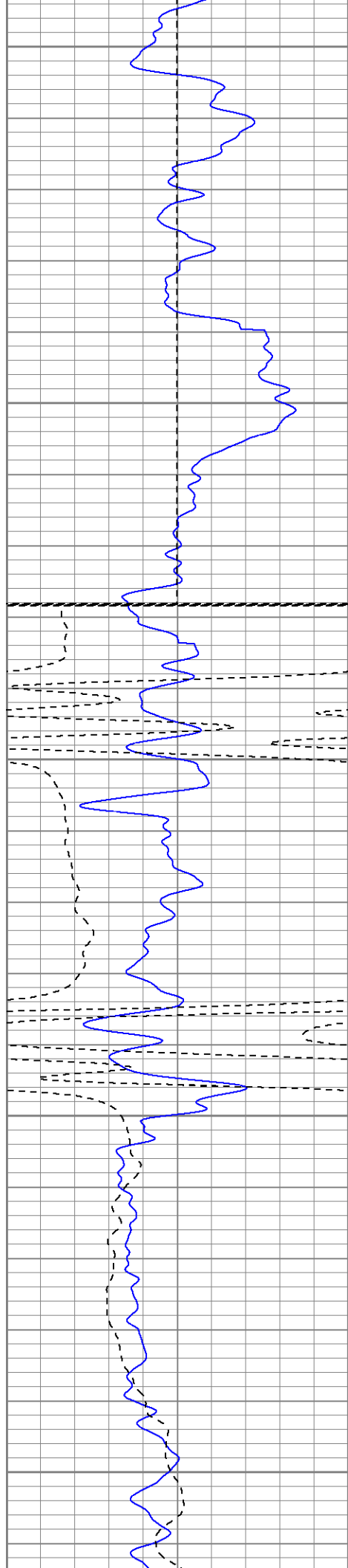
1800

1850

1900

1950





2000

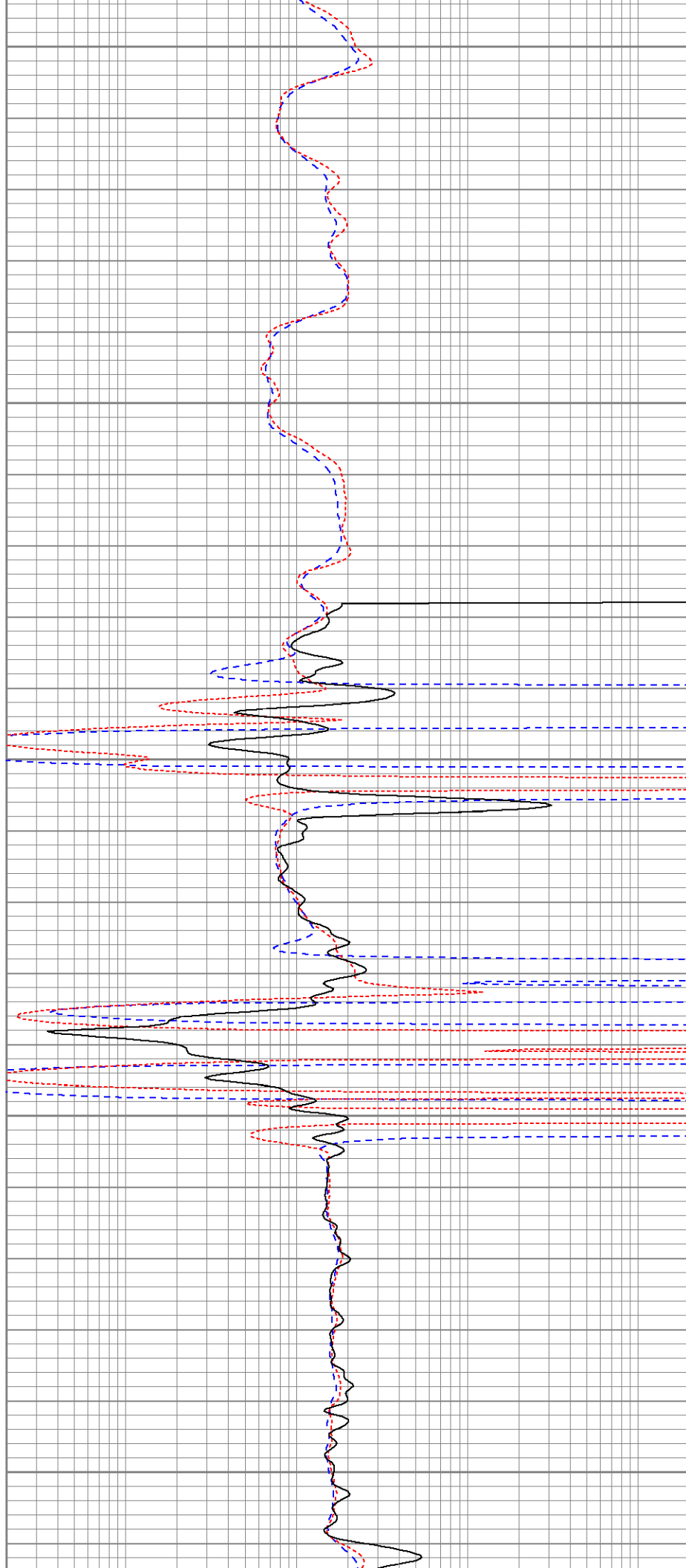
2050

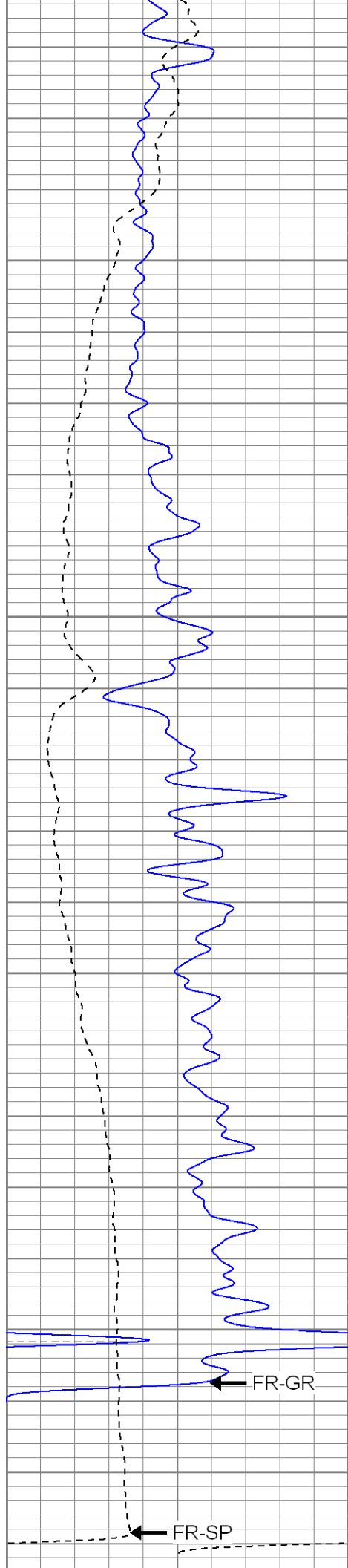
Fluid Level

2100

2150

2200





2250

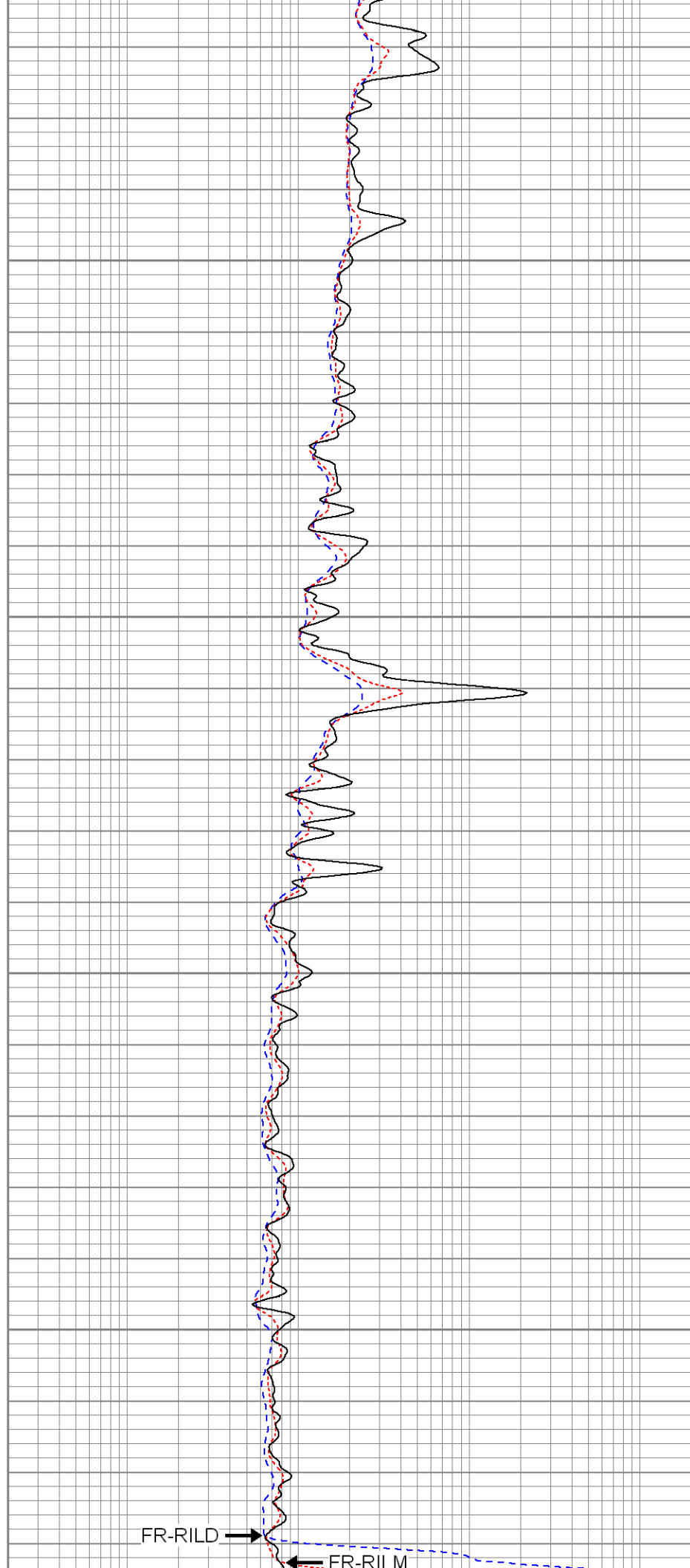
2300

2350

2400

FR-GR

FR-SP



FR-RILD

FR-RII M

0	GR (GAPI)	200
-100	SP (mV)	100
<hr/>		

0.2	RILD (Ohm-m)	2000
0.2	RILM (Ohm-m)	2000
0.2	RLL3 (Ohm-m)	2000



SUPERIOR

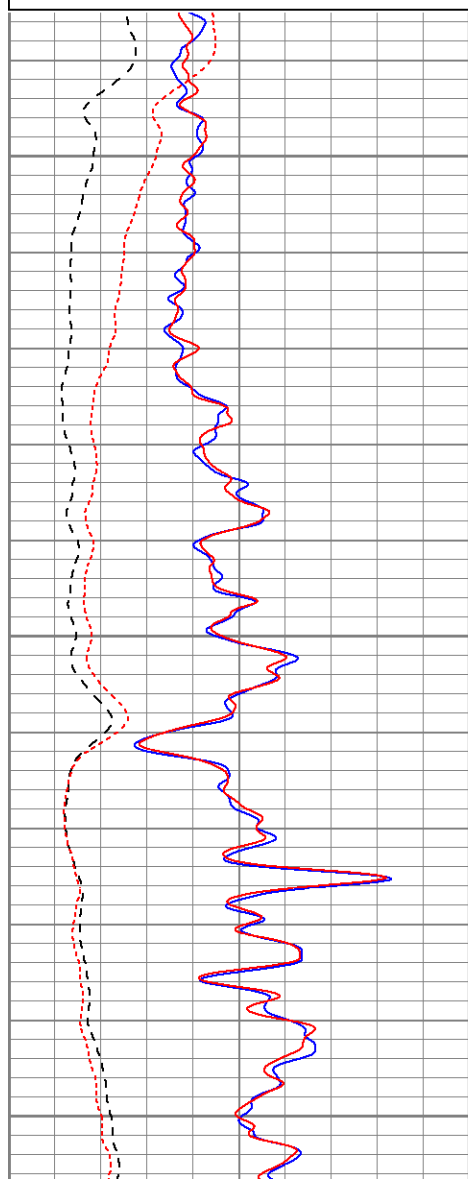
Black Lick, Pa.
Mercer, Pa.
Wooster, Oh.
Cleveland, Ok.
Trinidad, Co.

Repeat Pass

Database File: xtohreast2304.db
Dataset Pathname: pass1
Presentation Format: dil
Dataset Creation: Tue Apr 22 17:05:49 2008 by Log Open-Cased 070814
Charted by: Depth in Feet scaled 1:240

0	GR (GAPI)	200
-100	SP (mV)	100
<hr/>		
0	GR-repeat (GAPI)	200
-100	SP-repeat (mV)	100

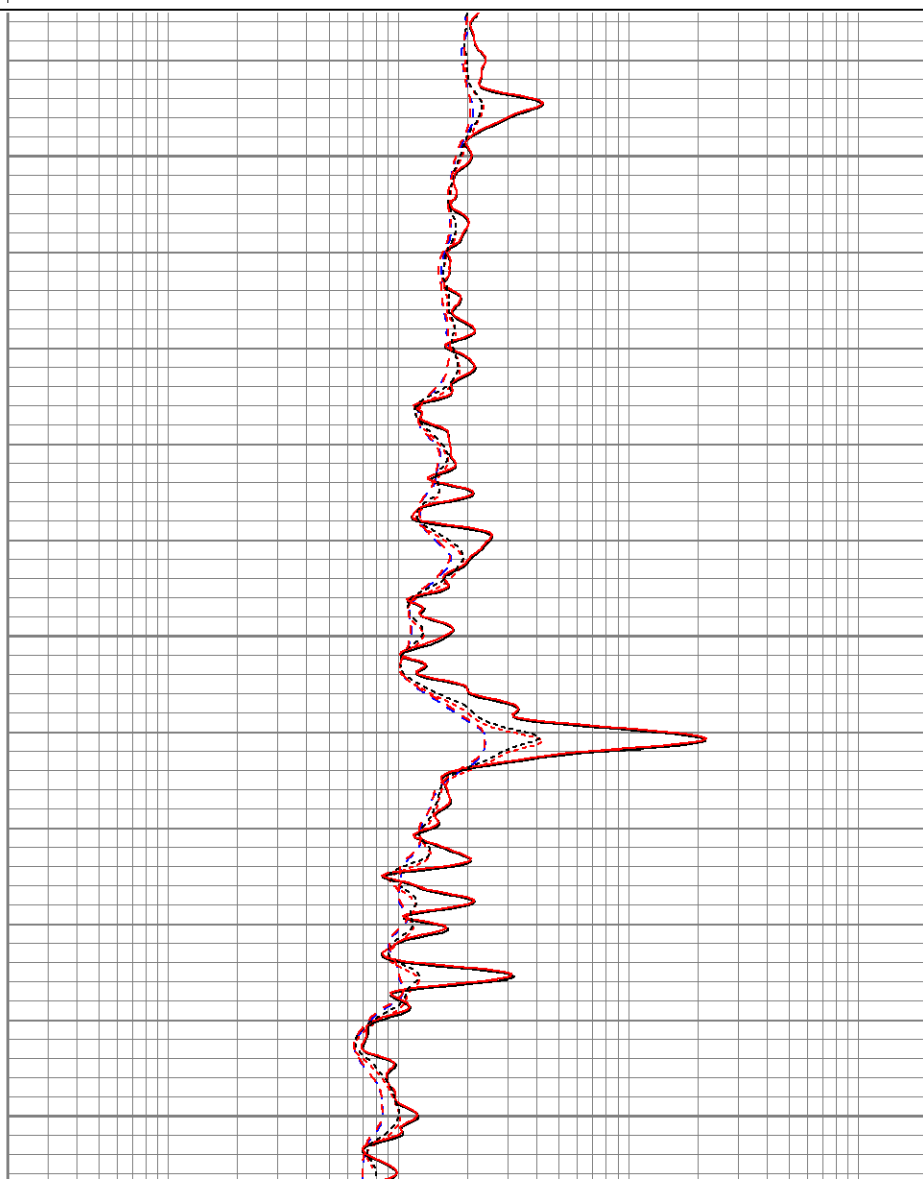
0.2	RILD (Ohm-m)	2000
0.2	RILM (Ohm-m)	2000
0.2	RLL3 (Ohm-m)	2000
0.2	RLL3-repeat (Ohm-m)	2000
0.2	RILM-repeat (Ohm-m)	2000
0.2	RILD-repeat (Ohm-m)	2000

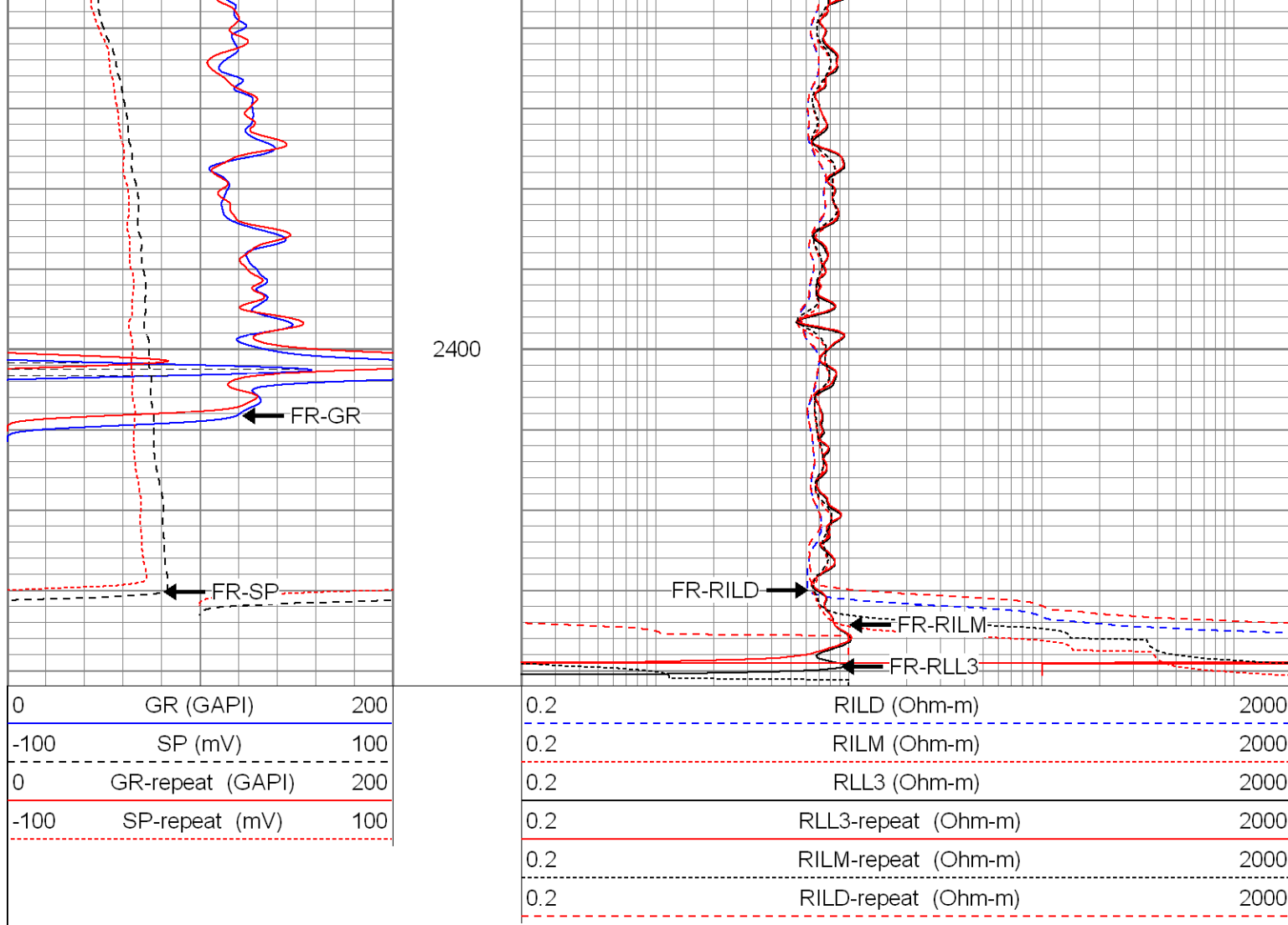


2250

2300

2350





Calibration Report

Database File: xtohreast2304.db
 Dataset Pathname: pass1
 Dataset Creation: Tue Apr 22 17:05:49 2008 by Log Open-Cased 070814

Dual Induction Calibration Report

Serial-Model: 5375-G
 Surface Cal Performed: Tue Apr 22 11:44:02 2008
 Downhole Cal Performed: Tue Apr 22 11:44:36 2008

Surface Calibration

Loop:	Readings			References			Results	
	Air	Loop		Air	Loop		m	b
Deep	0.004	0.624	V	0.000	400.000	mmho-m	645.281	-2.662
Medium	0.006	0.746	V	0.000	450.000	mmho-m	608.513	-3.944
Internal:	Zero	Cal		Zero	Cal		m	b
Deep	0.005	0.624	V	0.000	500.000	mmho-m	807.038	-3.699
Medium	0.007	0.746	V	0.000	500.000	mmho-m	676.388	-4.574

Downhole Calibration

Internal:	Readings			References			Results	
	Zero	Cal		Zero	Cal		m	b

Deep	0.087	400.091	mmho-m	0.295	400.079	mmho-m	0.999	0.209
Medium	0.104	450.126	mmho-m	0.171	449.996	mmho-m	1.000	0.067
Shallow	2.508	0.013	V	500.000	2.000	Ohm-m	124.000	-3.000

Temperature Calibration Report				
Serial Number:	2099T			
Tool Model:	CDLP			
Performed:	Thu Apr 10 12:16:16 2008			
	Reference		Reading	
Low Reference:	55.00	degF	3.15	V
High Reference:	160.00	degF	5.35	V
Gain:	47.73			
Offset:	-95.34			
Delta Spacing	1			

Compensated Density Calibration Report					
Serial-Model:			2099-NG		
Source / Verifier:			csv-n20 / blocks		
Master Calibration Performed:			Thu Apr 10 12:49:42 2008		
Master Calibration					
	Density		Far Detector	Near Detector	
Magnesium	1.710	g/cc	423.20	191.95	cps
Aluminum	2.590	g/cc	88.11	126.30	cps
	Spine Angle = 75.07		Density/Spine Ratio = 0.542		
	Size		Reading		
Small Ring	8.00	in	1.73	V	
Large Ring	14.00	in	2.99	V	

Gamma Ray Calibration Report								
Serial Number:			2001					
Tool Model:			P2001					
Performed:			Tue Apr 22 12:36:09 2008					
Calibrator Value:			1.0		GAPI			
Background Reading:			0.0		cps			
Calibrator Reading:			1.0		cps			
Sensitivity:			0.2500		GAPI/cps			

Neutron Calibration Report								
Serial Number:			5108					
Tool Model:			P					
Performed:			Thu Apr 10 15:21:19 2008					
Calibrator Value:			1		NAPI			
Calibrator Reading:			1		cps			
Sensitivity:			1		NAPI/cps			

Sensor	Offset (ft)	Schematic	Description	Len (ft)	OD (in)	Wt (lb)
--------	-------------	-----------	-------------	----------	---------	---------

Sensor	Onset (ft)	Schematic		Description	Len (ft)	OD (in)	Wt (lb)
NEU	38.31			NEU-P (5108)	4.92	3.63	85.00
GR	32.20			GR-P2001 (2001)	3.56	3.25	40.00
				CDL-NG (2099)	9.69	4.00	201.00
LSD DCAL SSD TEMP	23.65 23.36 23.11 22.42			TEMP-CDLP (2099T)	0.01	4.00	1.00
CILD SP	10.60 10.60			DIL-G (5375)	21.33	4.00	345.00
CILM	6.89						
RLL3	1.70						

Dataset:
xtohreast2304.db: field/well/run1/pass1

Total Length:
39.51 ft

Total Weight:
672.00 lb

O.D.
4.00 in