



SUPERIOR
Black Lick, Pa.
Mercer, Pa.
Wooster, Oh.
Cleveland, Ok.
Trinidad, Co.

CEMENT BOND GAMMA RAY

Company XTO Energy Inc.

Well Hill Ranch East 14-14

Field Purgatorie River

County Las Animas State CO

Location: API # : 05 071 09452 00

1028' FSL & 1746' FWL

SEC 14 TWP 34S RGE 67W

Permanent Datum Ground Level Elevation 7969'
Log Measured From Ground Level
Drilling Measured From Ground Level

Other Services
TEMP
Elevation
K.B. -----
D.F. -----
G.L. 7969'

Date

4/21/08

Run Number

one

Depth Driller

2650'

Depth Logger

2537'

Bottom Logged Interval

2533'

Top Log Interval

Surf.

Open Hole Size

7 7/8"

Type Fluid

water

Density / Viscosity

///

Max. Recorded Temp.

120 Degrees F

Estimated Cement Top

758'

Time Well Ready

ROA

Time Logger on Bottom

11:30 A.M.

Equipment Number

0699

Location

Trinidad

Recorded By

Buhr

Witnessed By

R. Rensink

Run Number

Bit

From

To

Size

Weight

From

To

Casing Record

Size

Wgt/Ft

Top

Bottom

Surface String

8 5/8"

00

490'

Prot. String

5 1/2"

00

2619'

Production String

Liner

<<< Fold Here >>>

All interpretations are opinions based on inferences from electrical or other measurements and we cannot and do not guarantee the accuracy or correctness of any interpretation, and we shall not, except in the case of gross or willful negligence on our part, be liable or responsible for any loss, costs, damages, or expenses incurred or sustained by anyone resulting from any interpretation made by any of our officers, agents or employees. These interpretations are also subject to our general terms and conditions set out in our current Price Schedule.

Comments

Logged under 1000 PSI

Lorencito, 5th Right past Compressor station,
1/2 mile take right up hill, at top take left,
3rd left, 2nd drive thru loc.



SUPERIOR

Black Lick, Pa.
Mercer, Pa.
Wooster, Oh.
Cleveland, Ok.
Trinidad, Co.

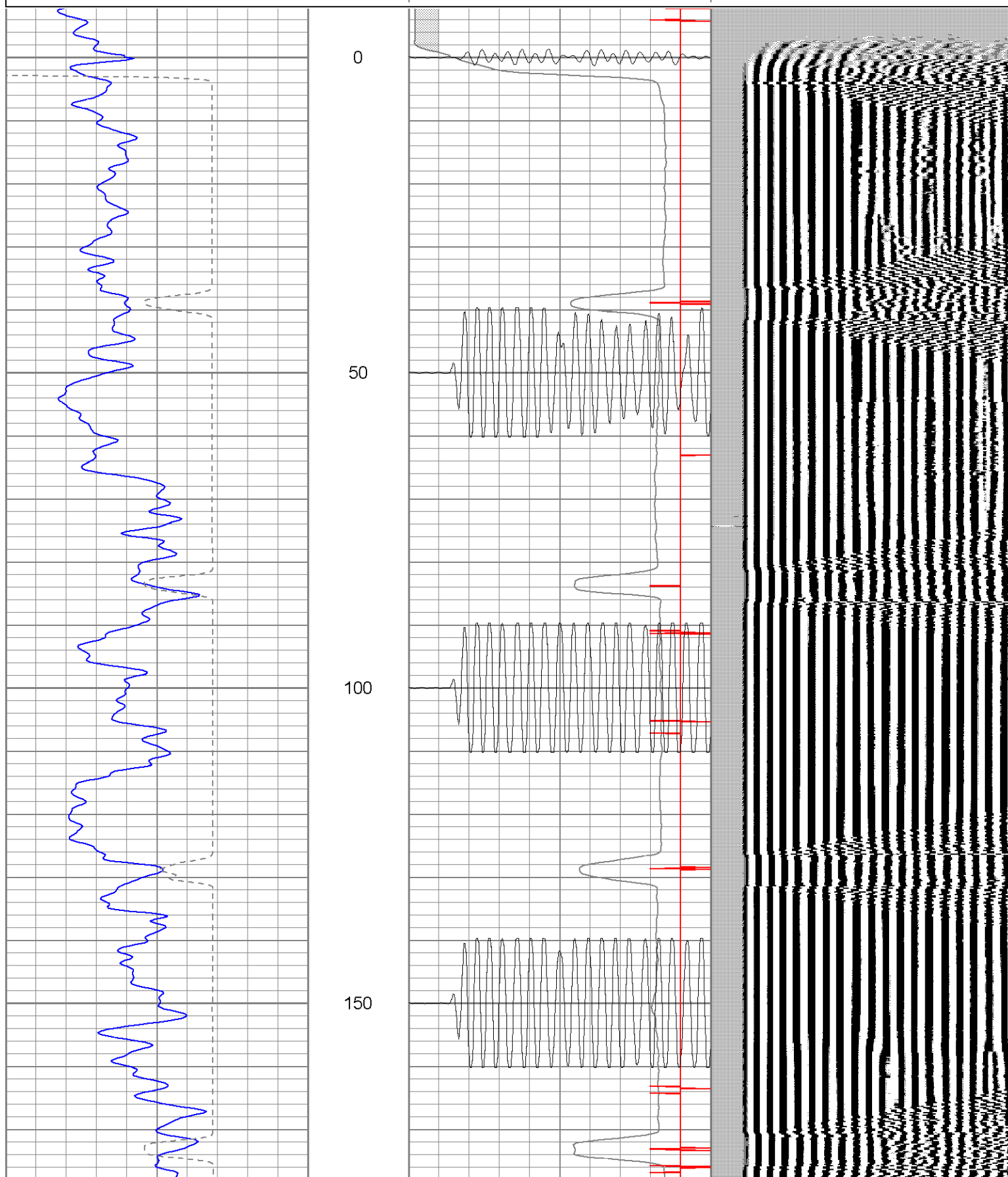
1000 PSI Main Pass

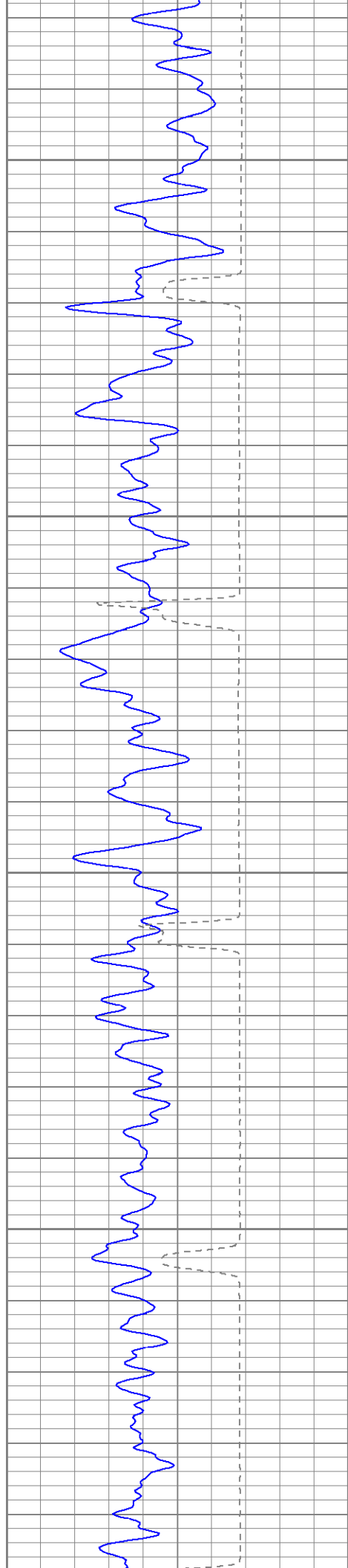
Database File: hillrancheast1414042108b.db
Dataset Pathname: pass2.1
Presentation Format: cb1t2
Dataset Creation: Mon Apr 21 13:17:55 2008 by Calc Open-Cased 071220
Charted by: Depth in Feet scaled 1:240

0	GR (GAPI)	200
400	TT3 (usec)	200

0	Amplitude (mV)	100
18	Collar Locator	-2
200	CBL5	1200

variable density



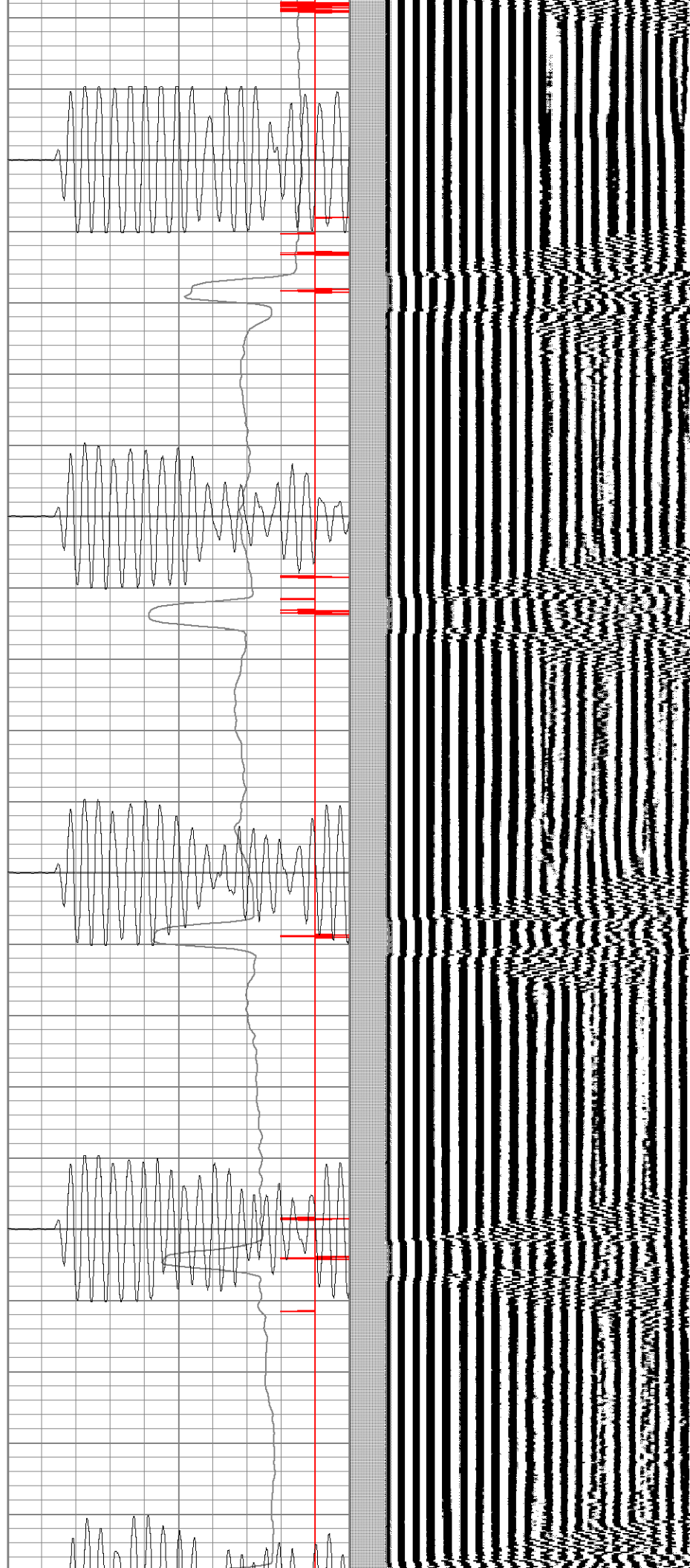


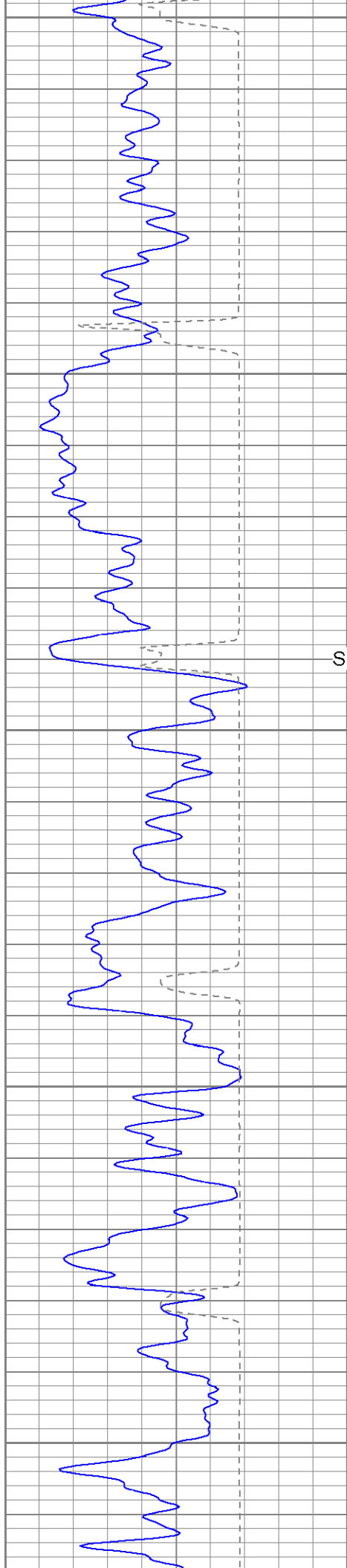
200

250

300

350





Surface Casing

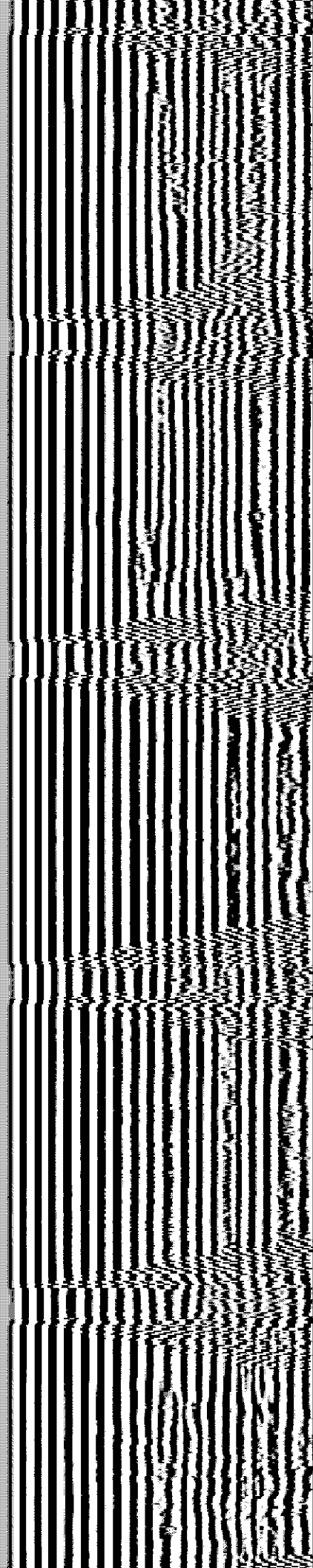
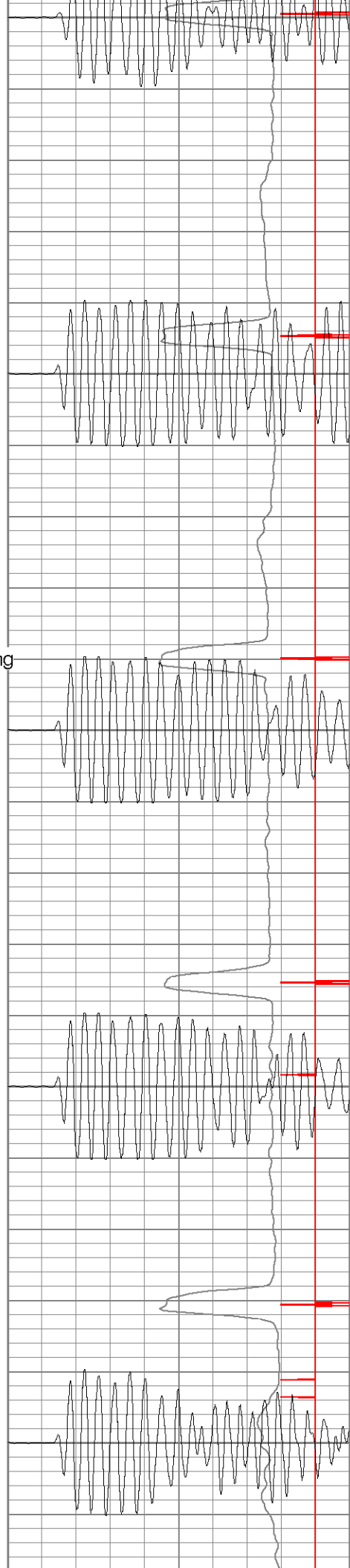
400

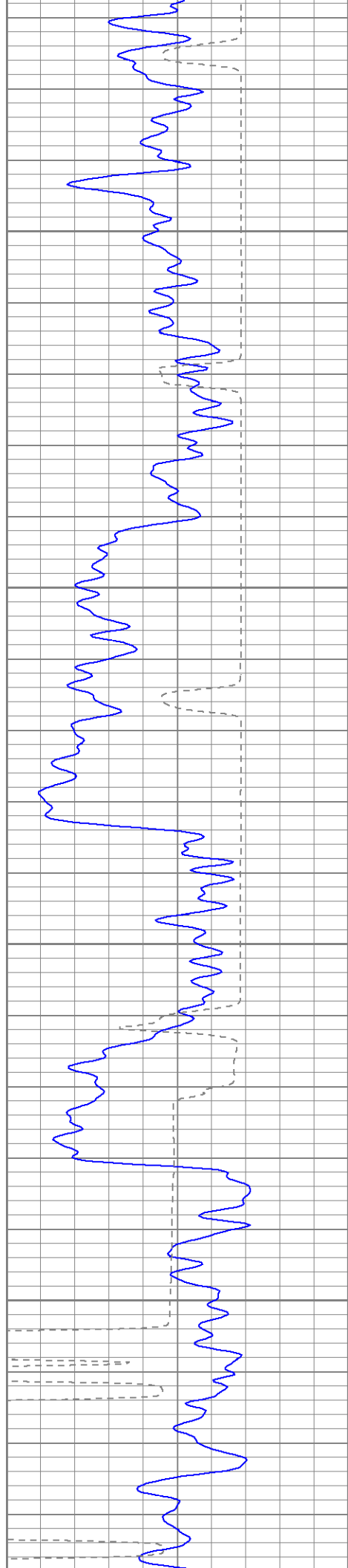
450

500

550

600



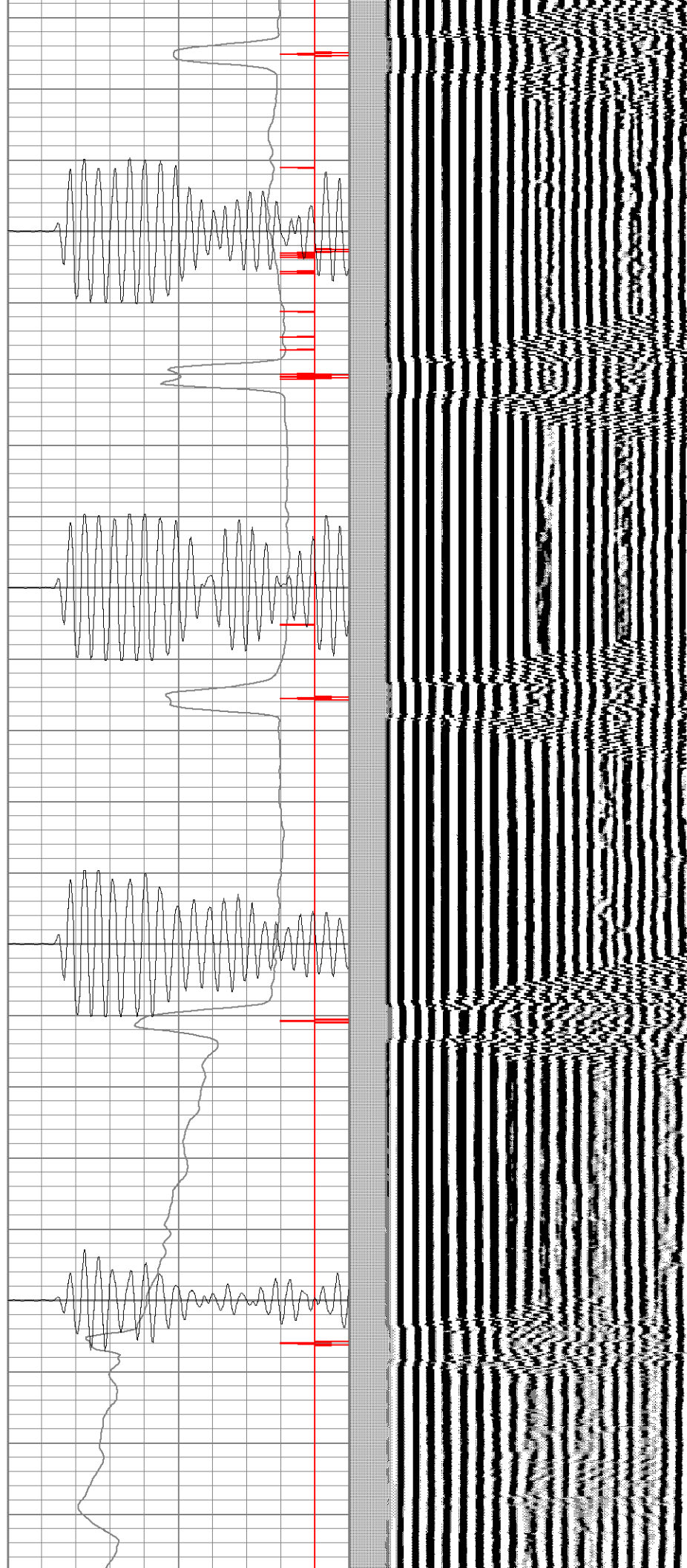


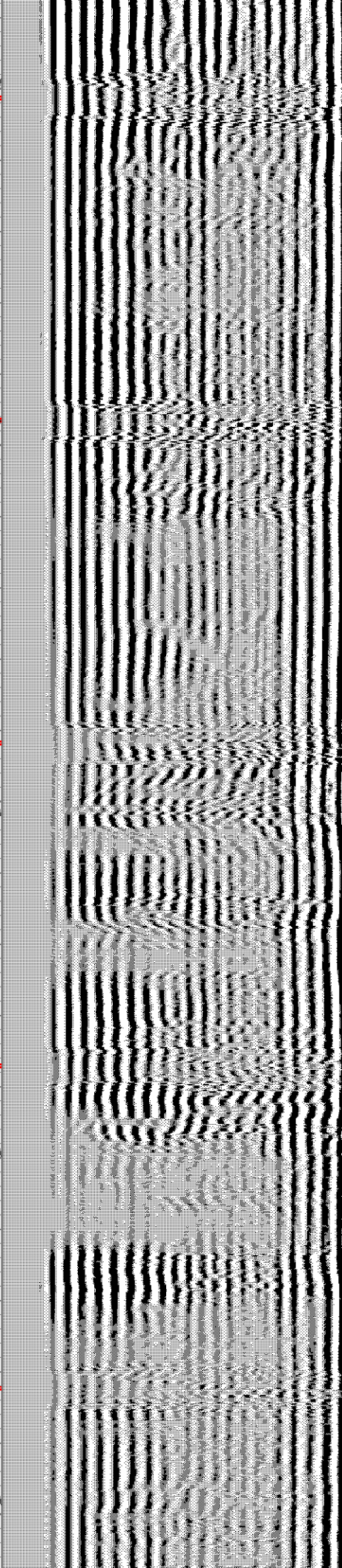
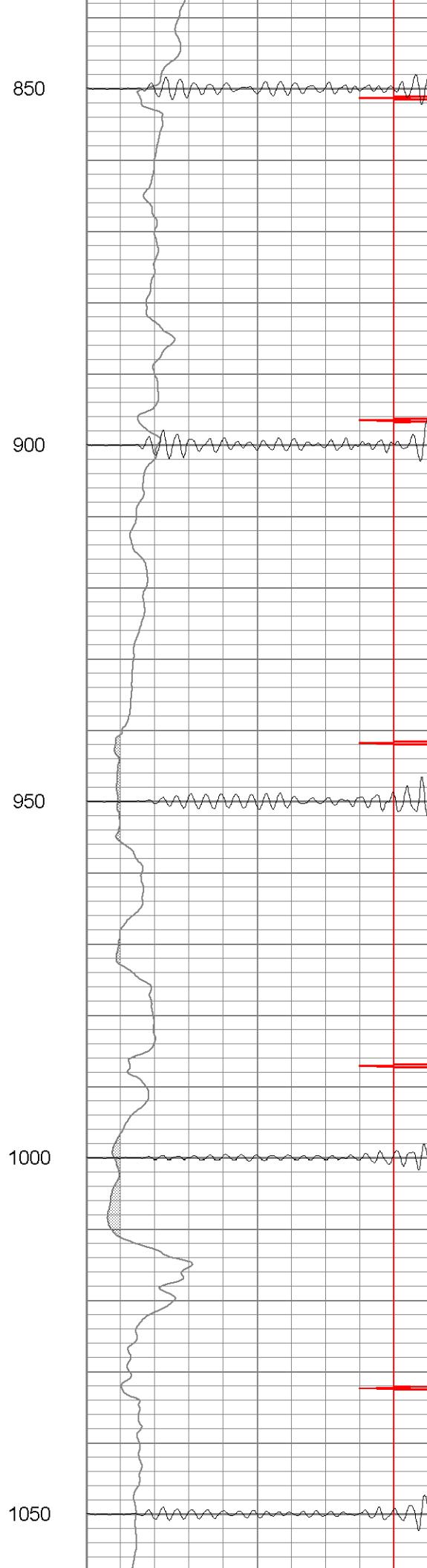
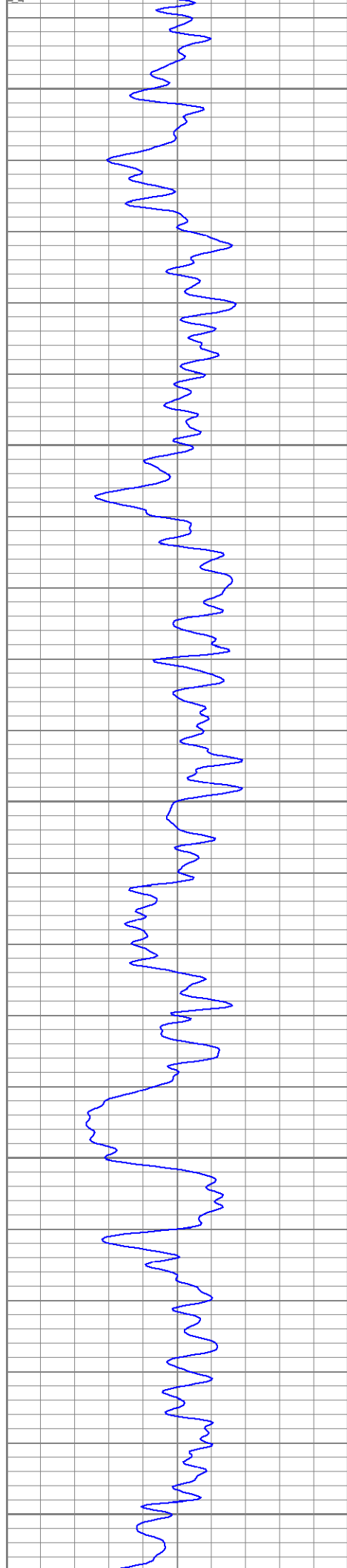
650

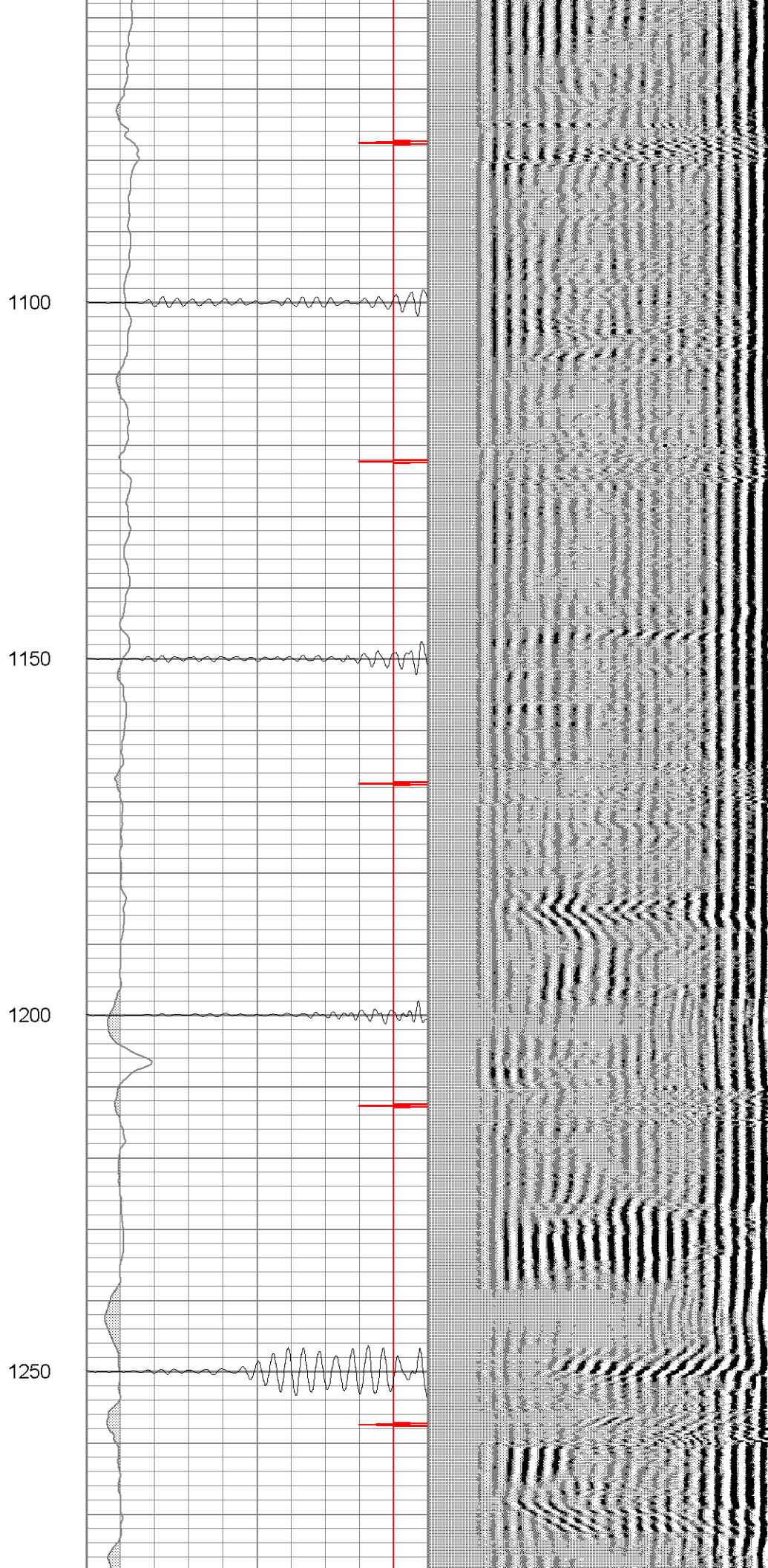
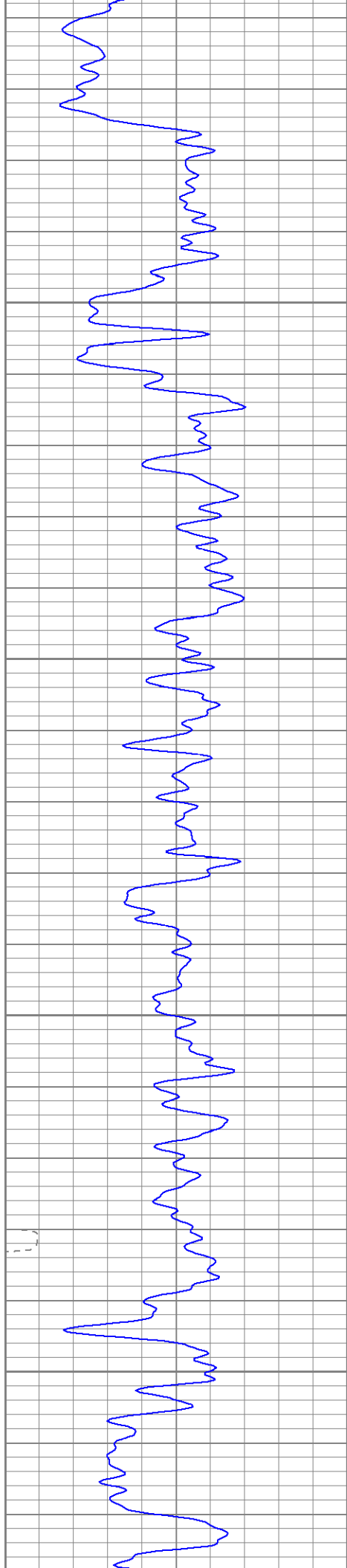
700

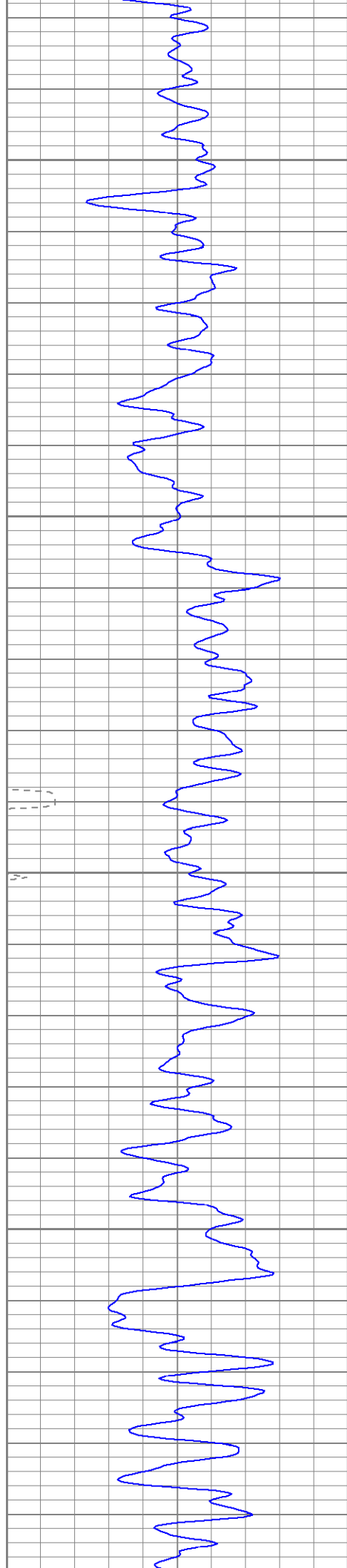
750

800







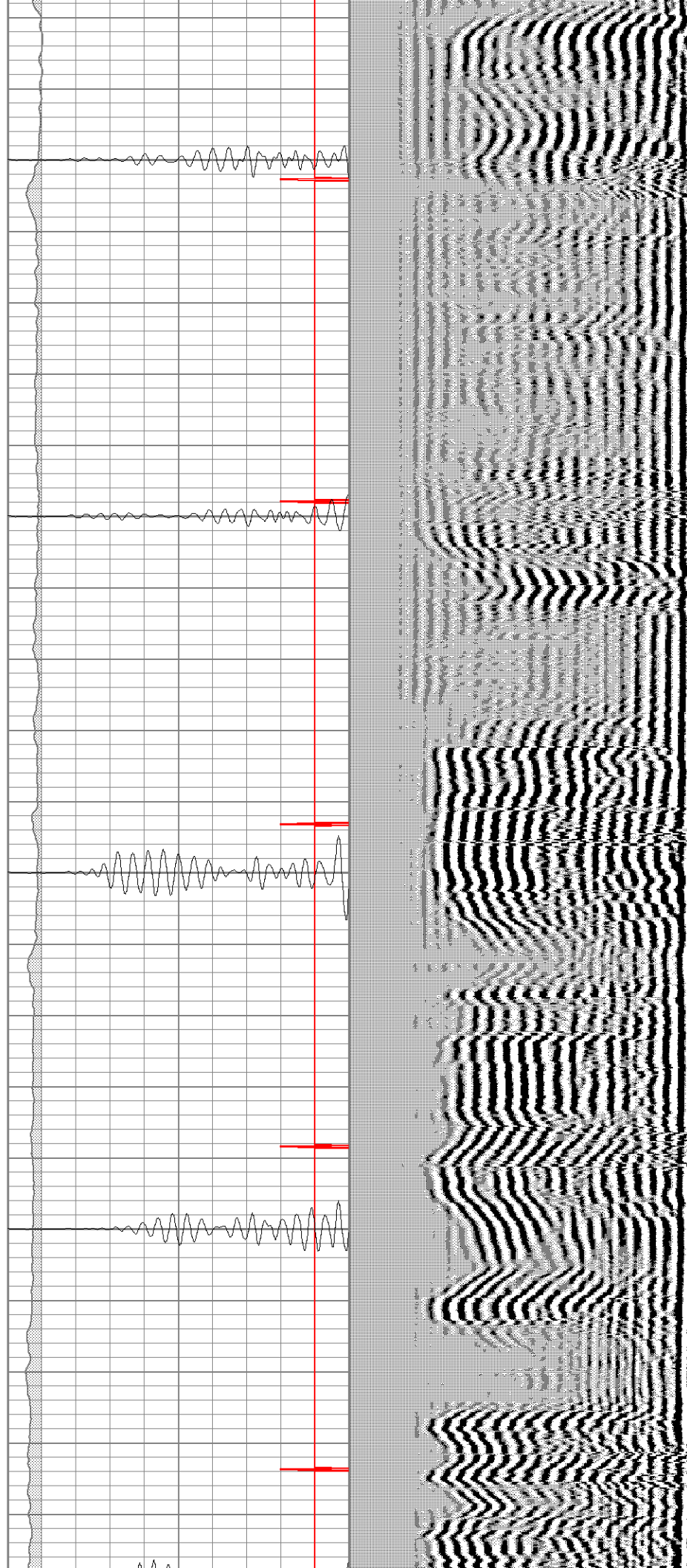


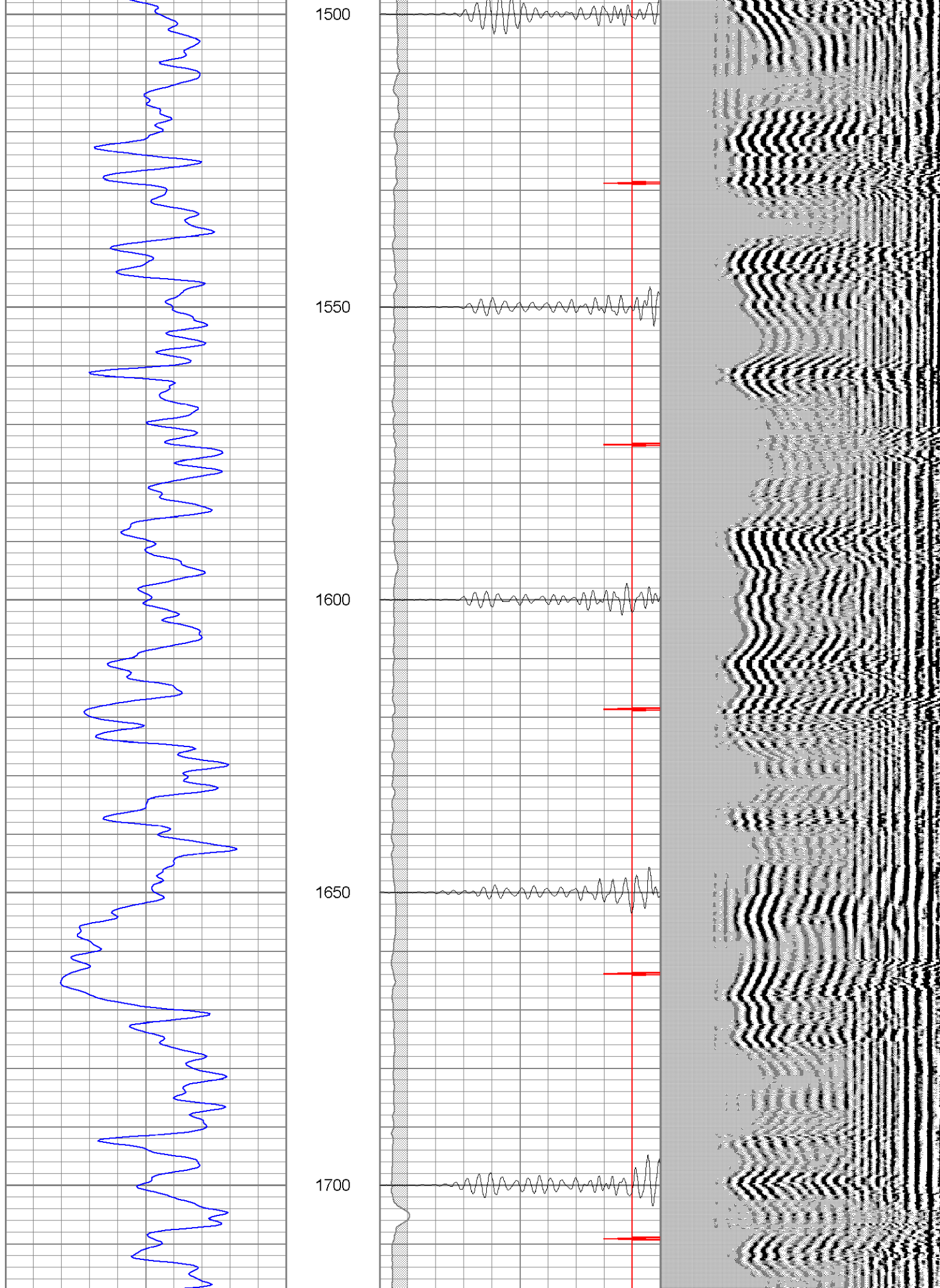
1300

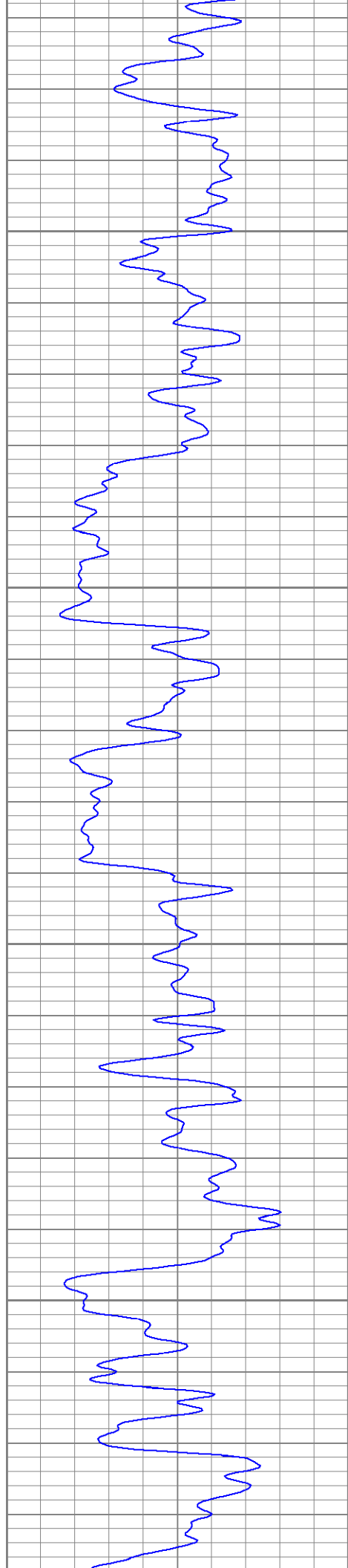
1350

1400

1450





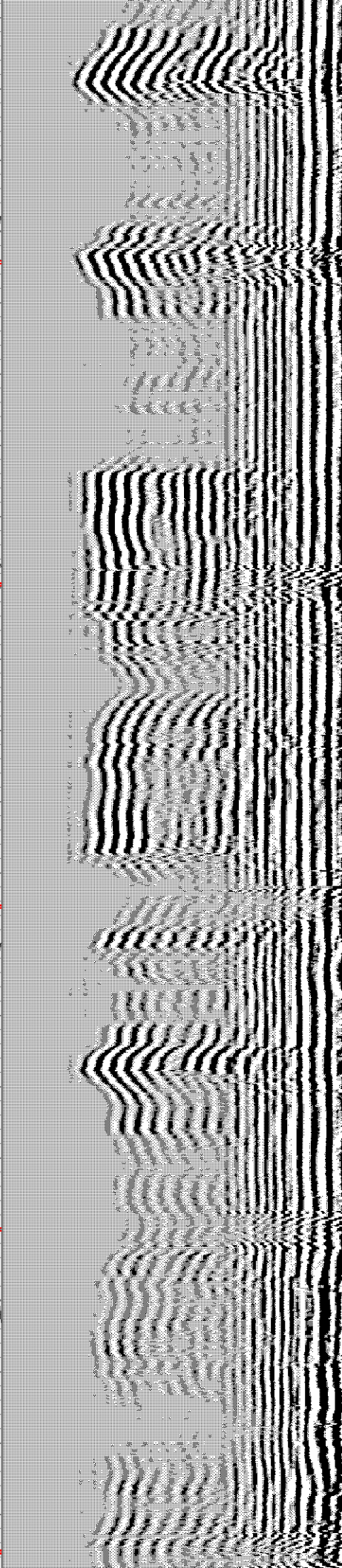
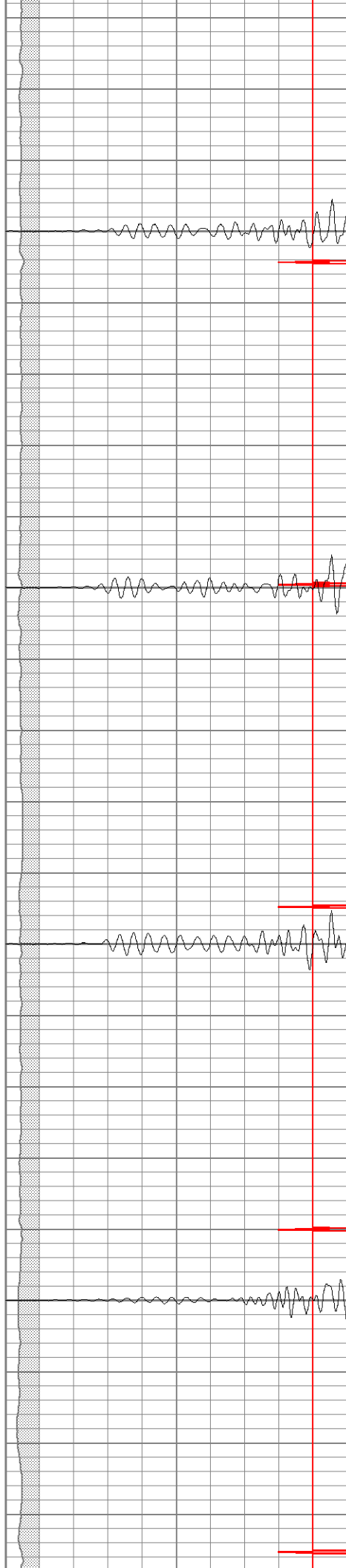


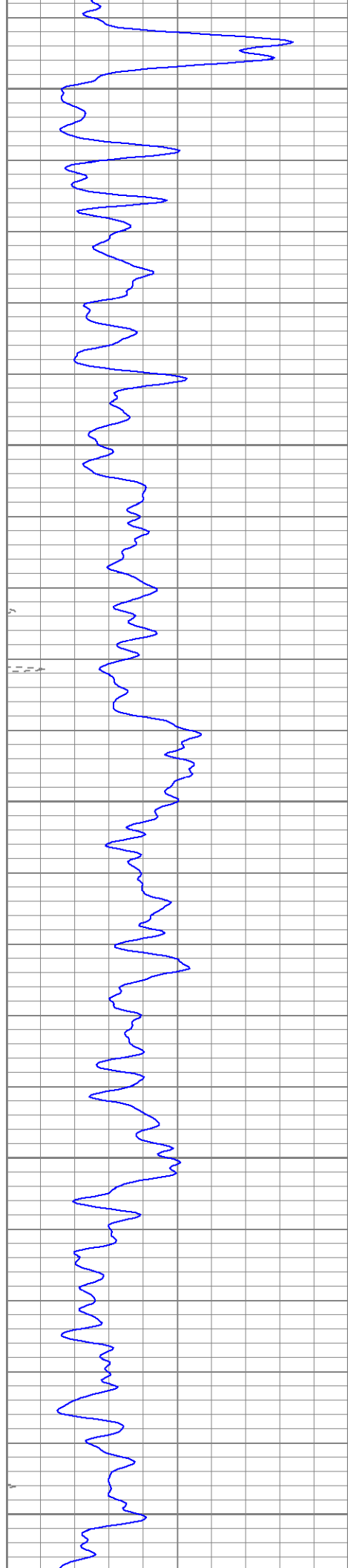
1750

1800

1850

1900





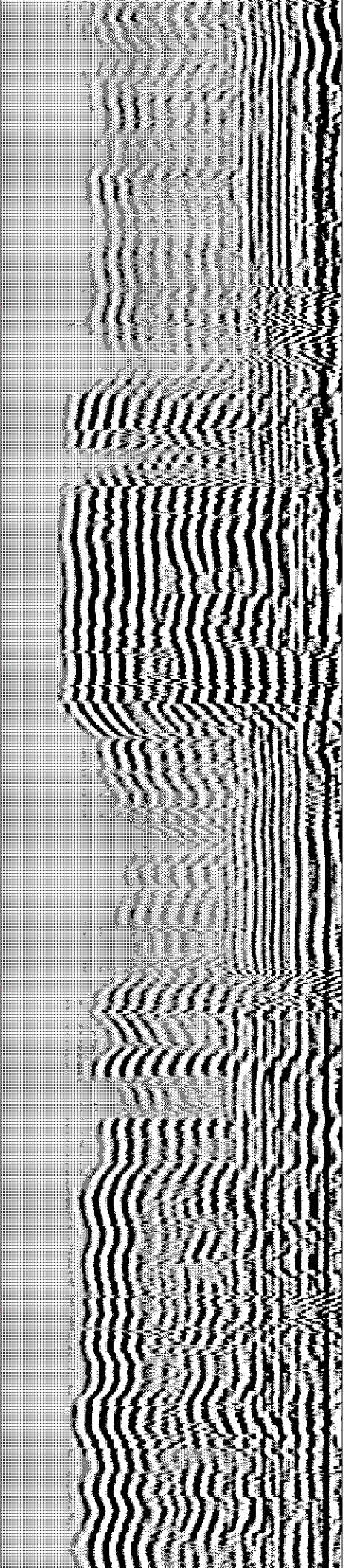
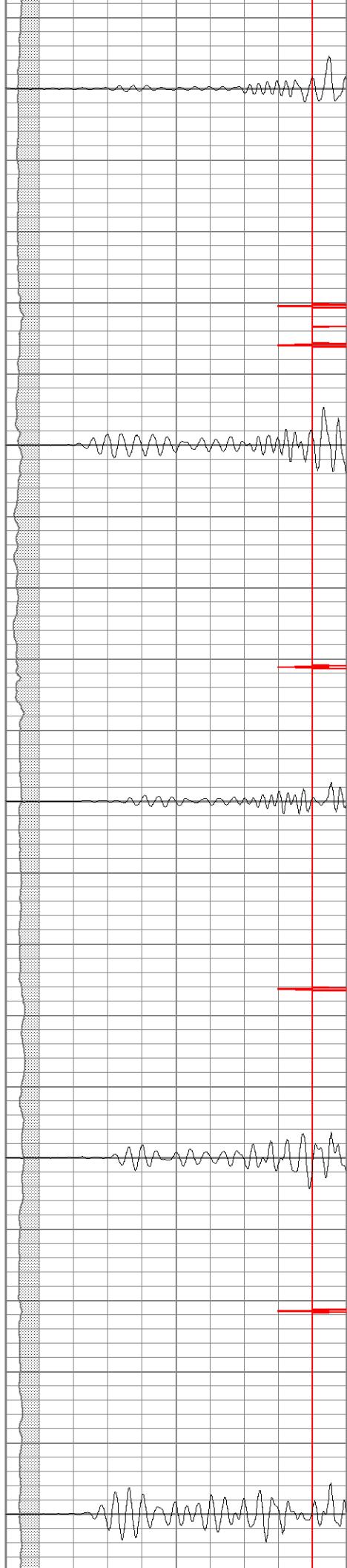
1950

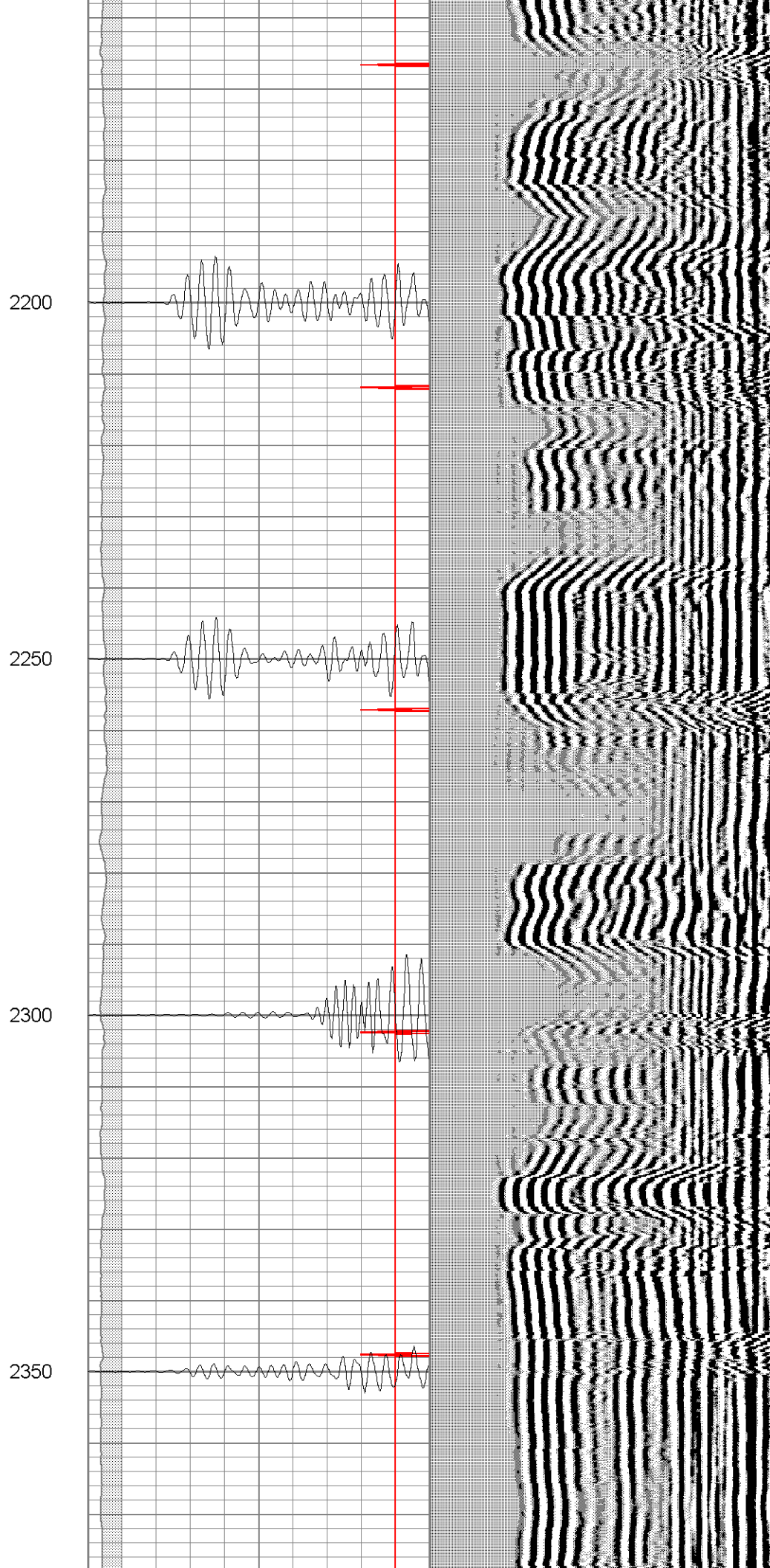
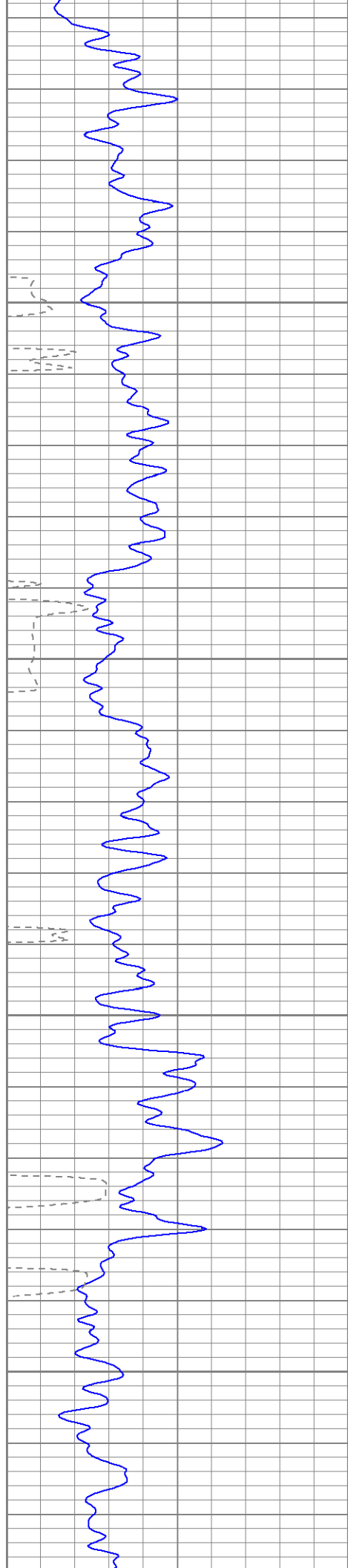
2000

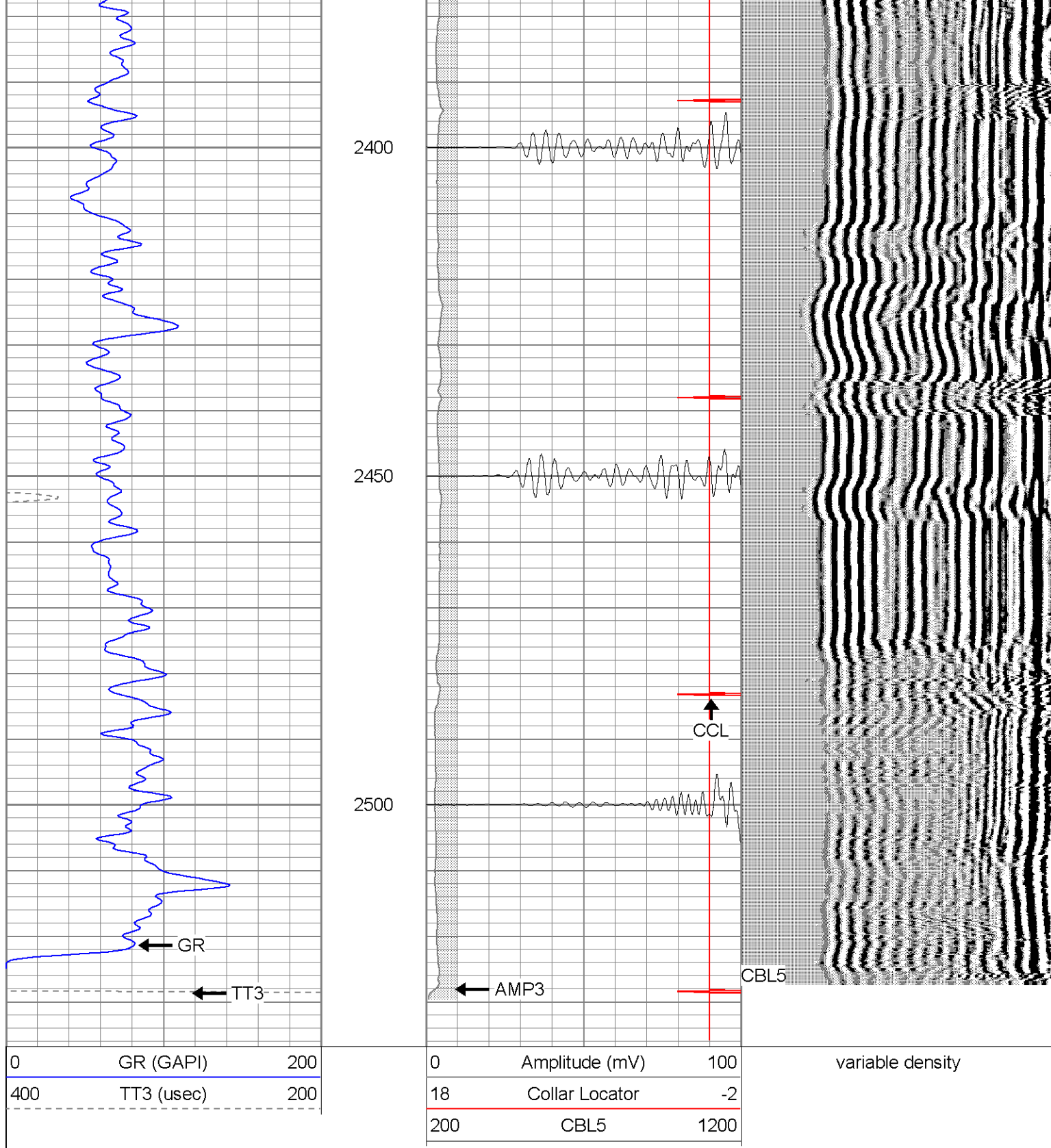
2050

2100

2150







SUPERIOR

Black Lick, Pa.
Mercer, Pa.
Wooster, Oh.
Cleveland, Ok.
Trinidad, Co.

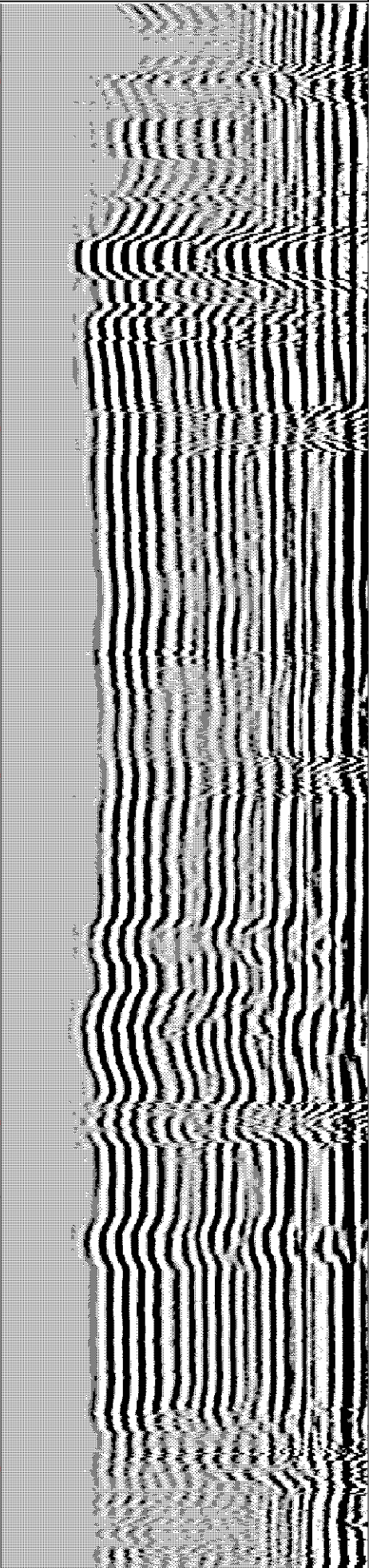
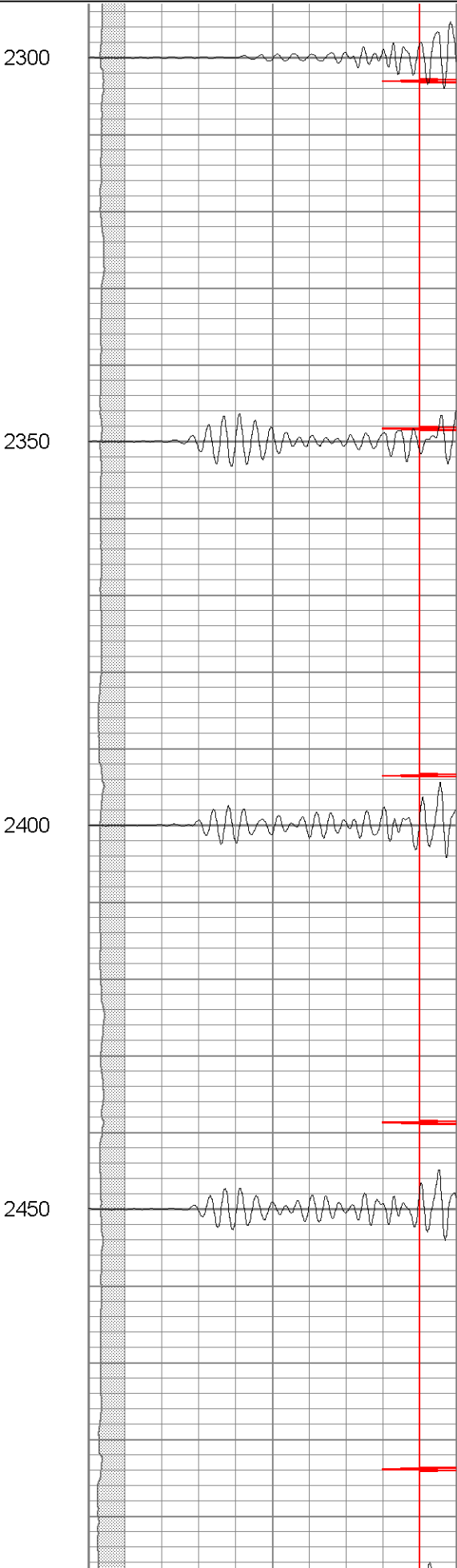
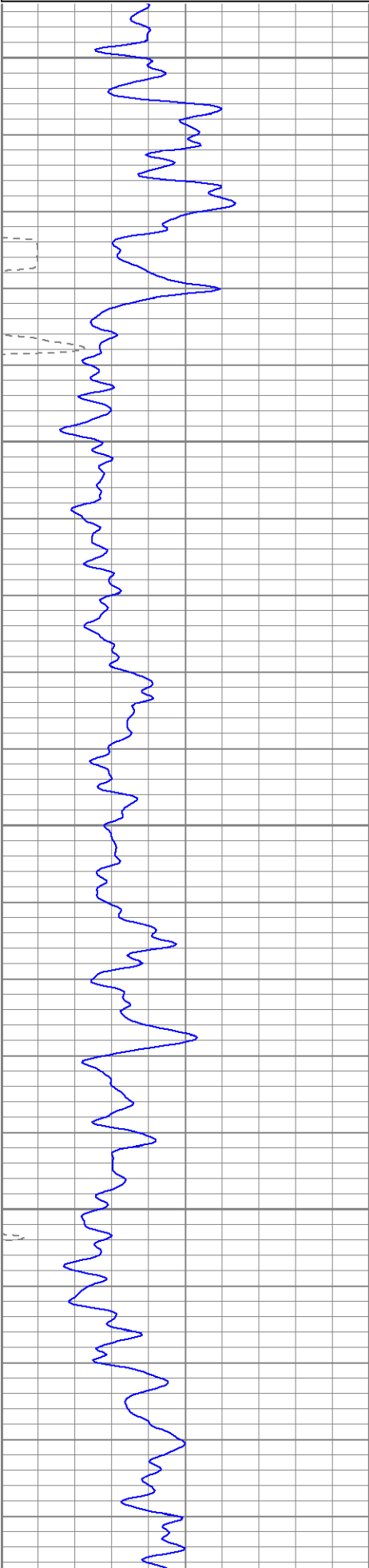
Repeat Pass

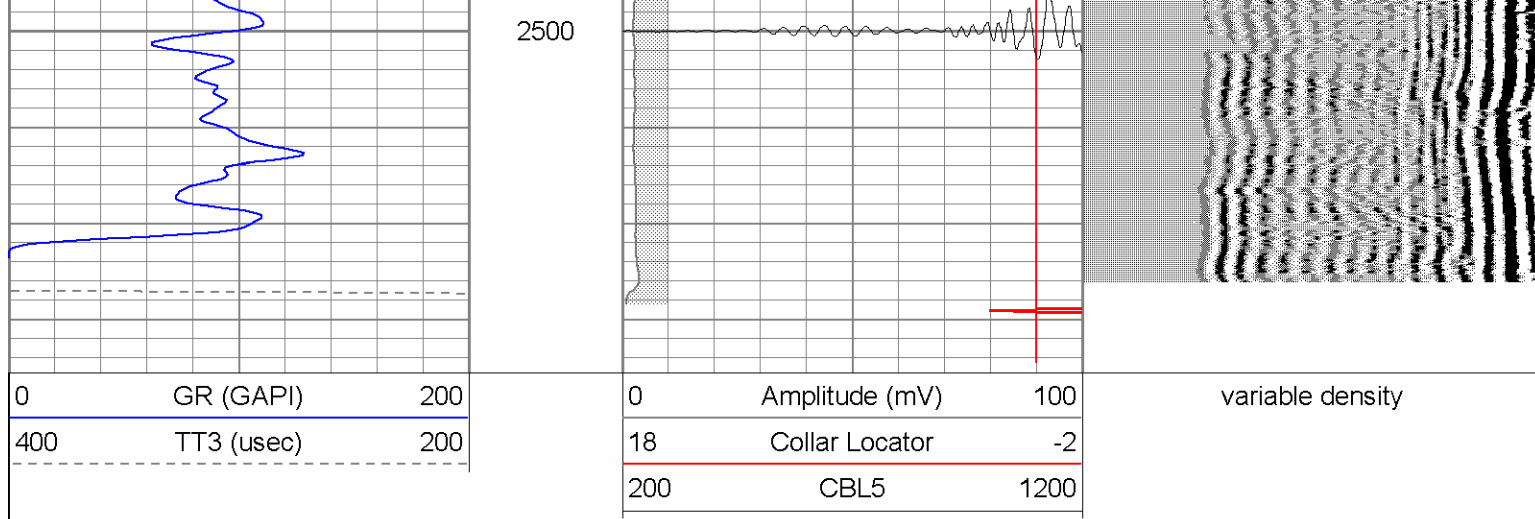
Database File: hillrancheast1414042108b.db
 Dataset Pathname: pass1.1
 Presentation Format: cbt2
 Dataset Creation: Mon Apr 21 13:05:22 2008 by Calc Open-Cased 071220
 Charted by: Depth in Feet scaled 1:240

0	GR (GAPI)	200
400	TT3 (usec)	200

0	Amplitude (mV)	100
18	Collar Locator	-2
200	CBL5	1200

variable density





Calibration Report

Database File: hillrancheast1414042108b.db
 Dataset Pathname: pass1.1
 Dataset Creation: Mon Apr 21 13:05:22 2008 by Calc Open-Cased 071220

Cement Bond Log Calibration Report

Serial Number:	Titan5		
Tool Model:	T5		
Performed:	Mon Apr 21 11:52:01 2008		
Depth:	24.8927	ft	
Casing Diameter:	5.5	in	
	3' Spacing	5' Spacing	
Signal Zero:	1	1	mV
Calibrated Amplitude:	85	85	mV
Reading at Signal Zero:	0	-0.00244141	V
Reading in Free Pipe:	1.22	1.06	V
Gain:	68.8525	79.0632	
Offset:	1	1.19303	

Gamma Ray Calibration Report

Serial Number:	Titan5	
Tool Model:	T5	
Performed:	Wed Apr 09 09:28:11 2008	
Calibrator Value:	1.0	GAPI
Background Reading:	0.0	cps
Calibrator Reading:	1.0	cps
Sensitivity:	1.0000	GAPI/cps

Sensor	Offset (ft)	Schematic	Description	Len (ft)	OD (in)	Wt (lb)
GR	13.64		GR-T5 (Titan5)	2.52	1.63	25.00
WVF5	9.49					

WVF3	8.49		CBL-T5 (Titan5)	7.23	2.25	110.00
			X	3.00	3.00	25.00
CCL	0.83		CCL-T5 (Titan5) Long	2.15	2.25	25.00
<p>Dataset: hillrancheast1414042108b.db: field/well/run1/pass1.1</p> <p>Total Length: 14.91 ft</p> <p>Total Weight: 185.00 lb</p> <p>O.D. 3.00 in</p>						