



SUPERIOR
Black Lick, Pa.
Mercer, Pa.
Wooster, Oh.
Cleveland, Ok.
Trinidad, Co.

DUAL INDUCTION LOG

Company XTO Energy Inc.
Well Hill Ranch East 14-14
Field Purgatoire River
County Las Animas State Colorado

Location: API # : 05 071 09452 00

1028' FSL & 1746' FWL

SEC 14 TWP 34S RGE 67W

Permanent Datum	Ground Level	Elevation	7969'
Log Measured From	Ground Level		
Drilling Measured From	Ground Level		

Other Services
CDL
NEUTRON
Elevation
K.B. -----
D.F. -----
G.L. 7969'

Date	4-19-08		
Run Number	One		
Depth Driller	2650'		
Depth Logger	2633'		
Bottom Logged Interval	2631'		
Top Log Interval	Surface Casing		
Casing Driller	8 5/8" @ 488'		
Casing Logger	490'		
Bit Size	7 7/8"		
Type Fluid in Hole	Water		
Density / Viscosity	///		
pH / Fluid Loss	///		
Source of Sample	///		
Rm @ Meas. Temp	///		
Rmf @ Meas. Temp	///		
Rmc @ Meas. Temp	///		
Source of Rmf / Rmc	///		
Rm @ BHT	///		
Time Circulation Stopped	12:00 A.M.		
Time Logger on Bottom	5:40 A.M.		
Maximum Recorded Temperature	113 DEG F		
Equipment Number	T697		
Location	Trinidad		
Recorded By	J. Cappellucci		
Witnessed By	Mr. Don Johnson		

<<< Fold Here >>>

All interpretations are opinions based on inferences from electrical or other measurements and we cannot and do not guarantee the accuracy or correctness of any interpretation, and we shall not, except in the case of gross or willful negligence on our part, be liable or responsible for any loss, costs, damages, or expenses incurred or sustained by anyone resulting from any interpretation made by any of our officers, agents or employees. These interpretations are also subject to our general terms and conditions set out in our current Price Schedule.

Comments

Well Directions:
Lorencito, 2.2 miles past Compressor station take right,
at next Y stay right up hill, At top of hill take hard left,
take third left, second drive through location is HRE 14-14.

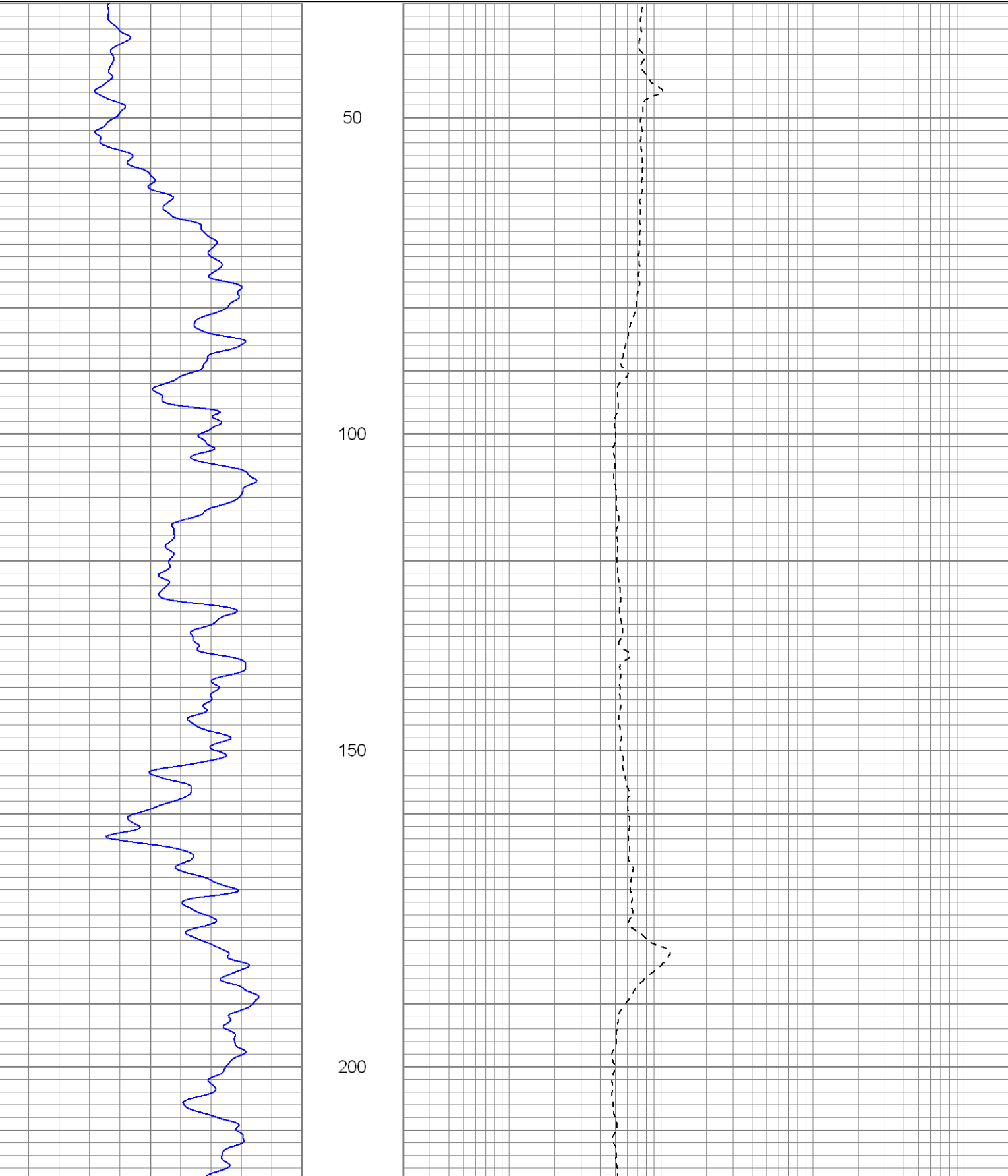


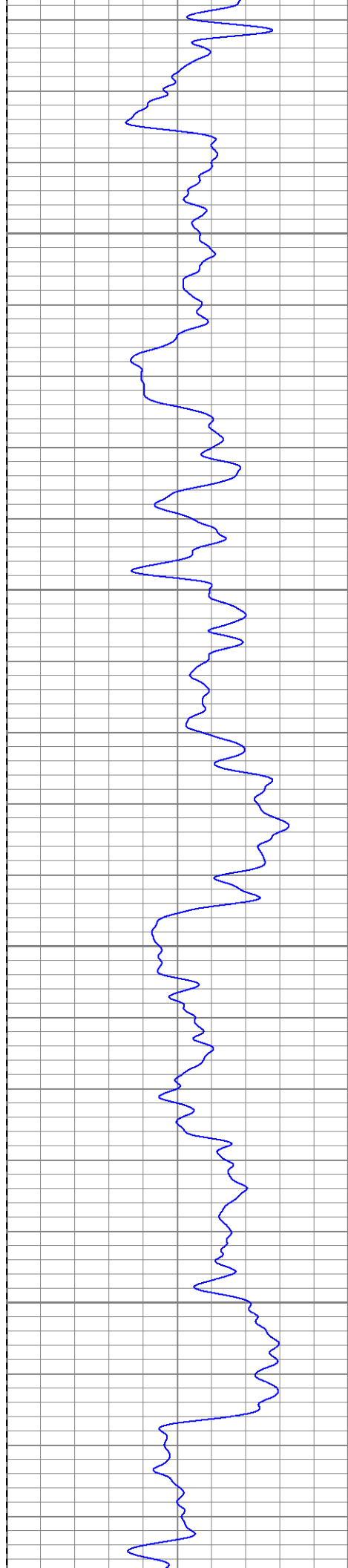
SUPERIOR
Black Lick, Pa.
Mercer, Pa.
Wooster, Oh.
Cleveland, Ok.
Trinidad, Co.

Main Pass

Database File: xtohre1414.db
Dataset Pathname: pass2.2
Presentation Format: dil
Dataset Creation: Sat Apr 19 07:27:31 2008 by Calc Open-Cased 070814
Charted by: Depth in Feet scaled 1:240

0	GR (GAPI)	200	0.2	RILM (Ohm-m)	2000
-200	SP (mV)	0	0.2	RILD (Ohm-m)	2000
			0.2	RLL3 (Ohm-m)	2000



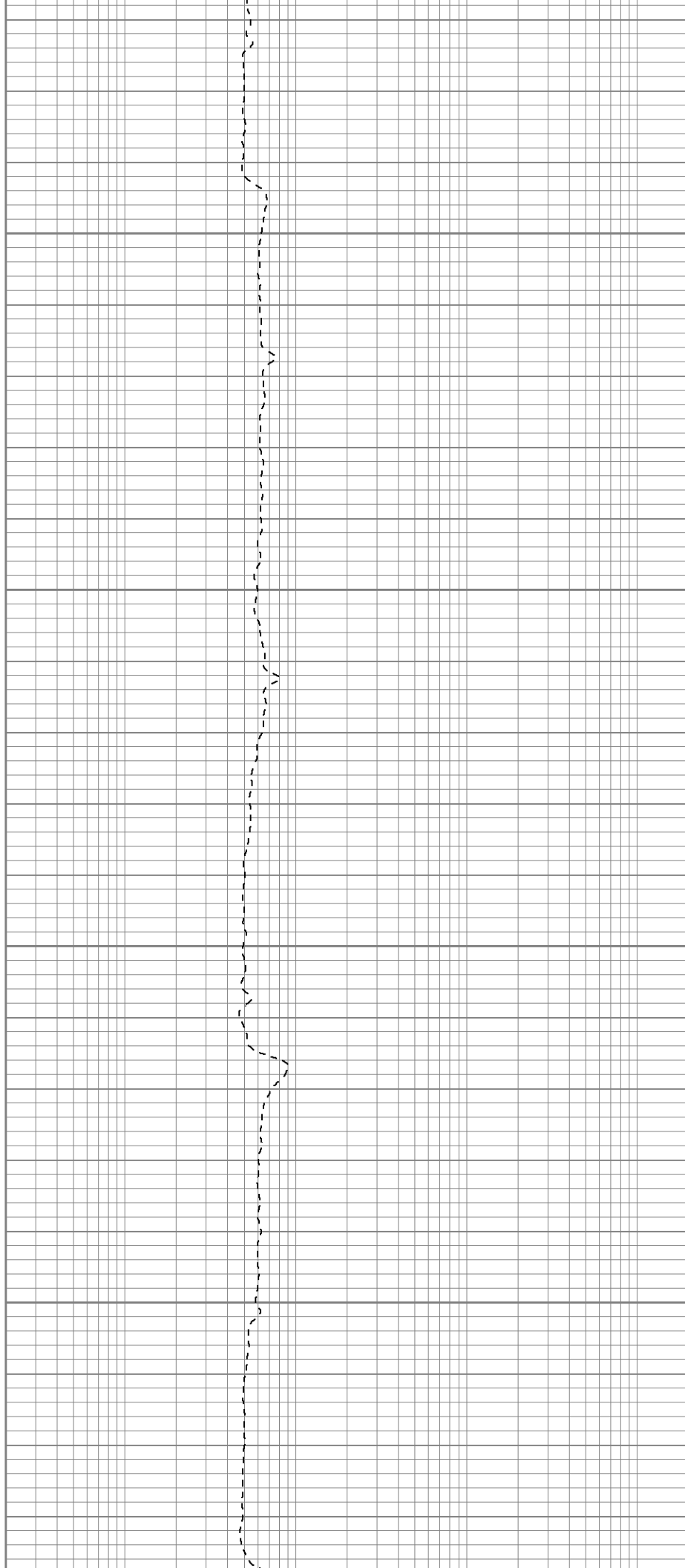


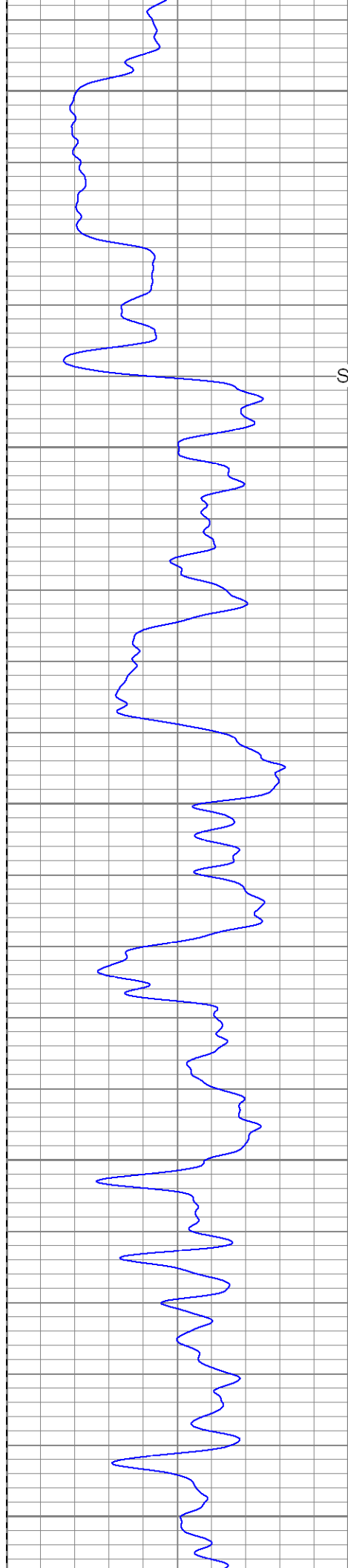
250

300

350

400





450

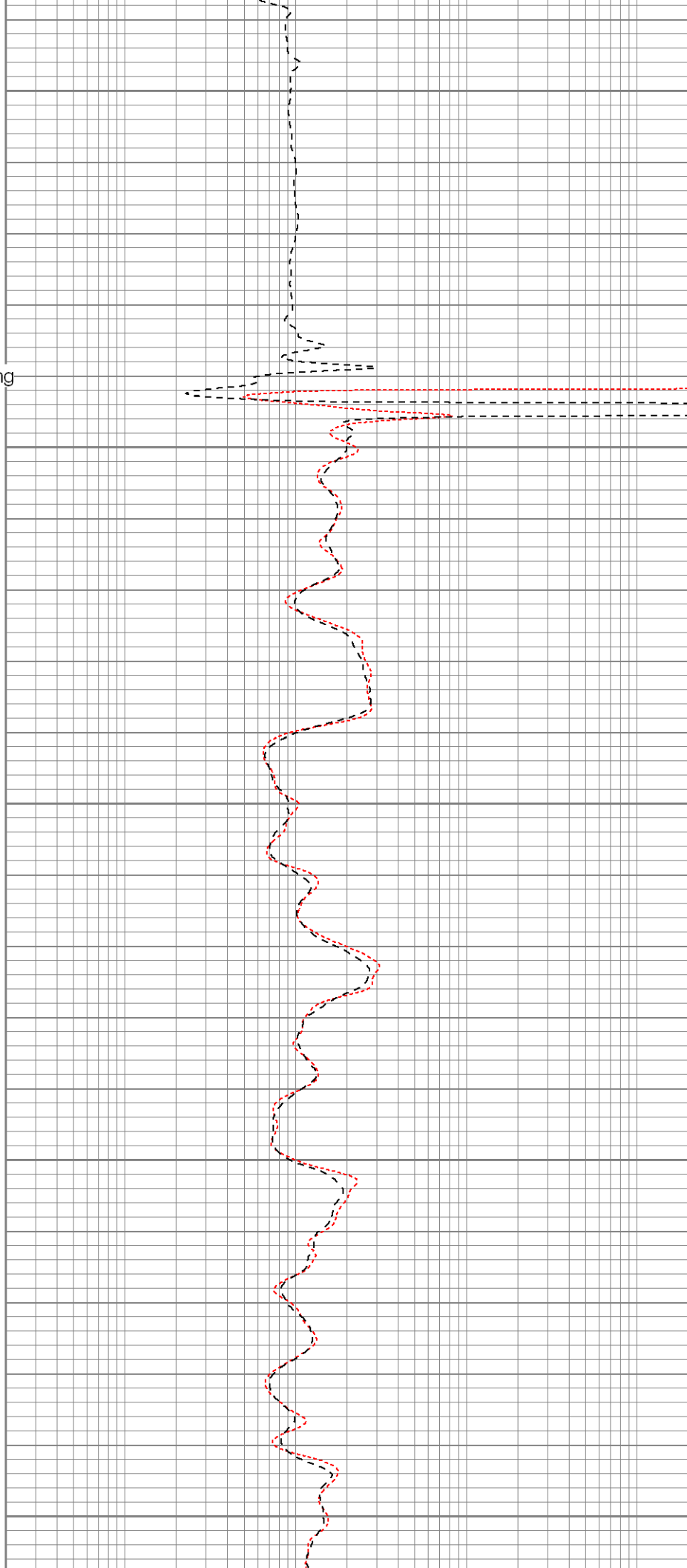
Surface Casing

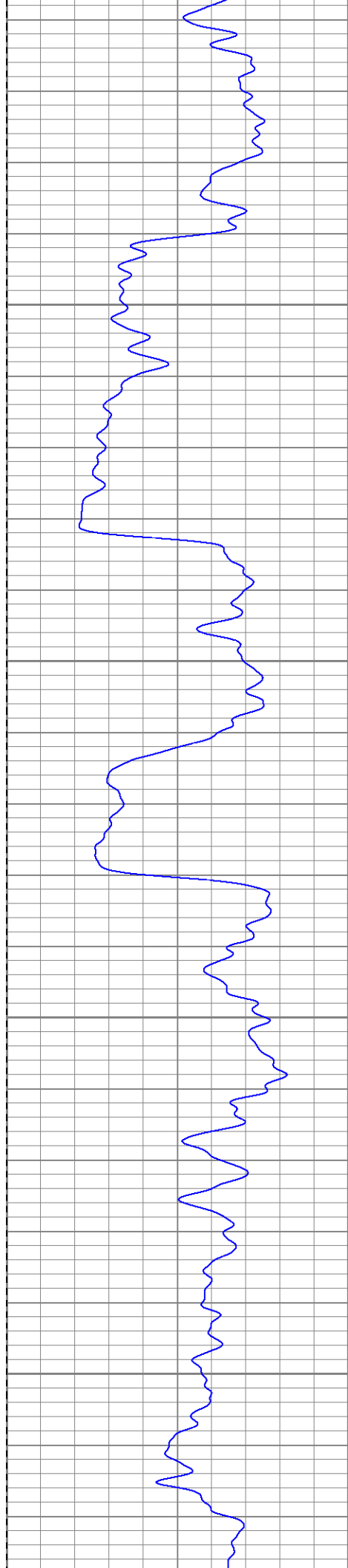
500

550

600

650



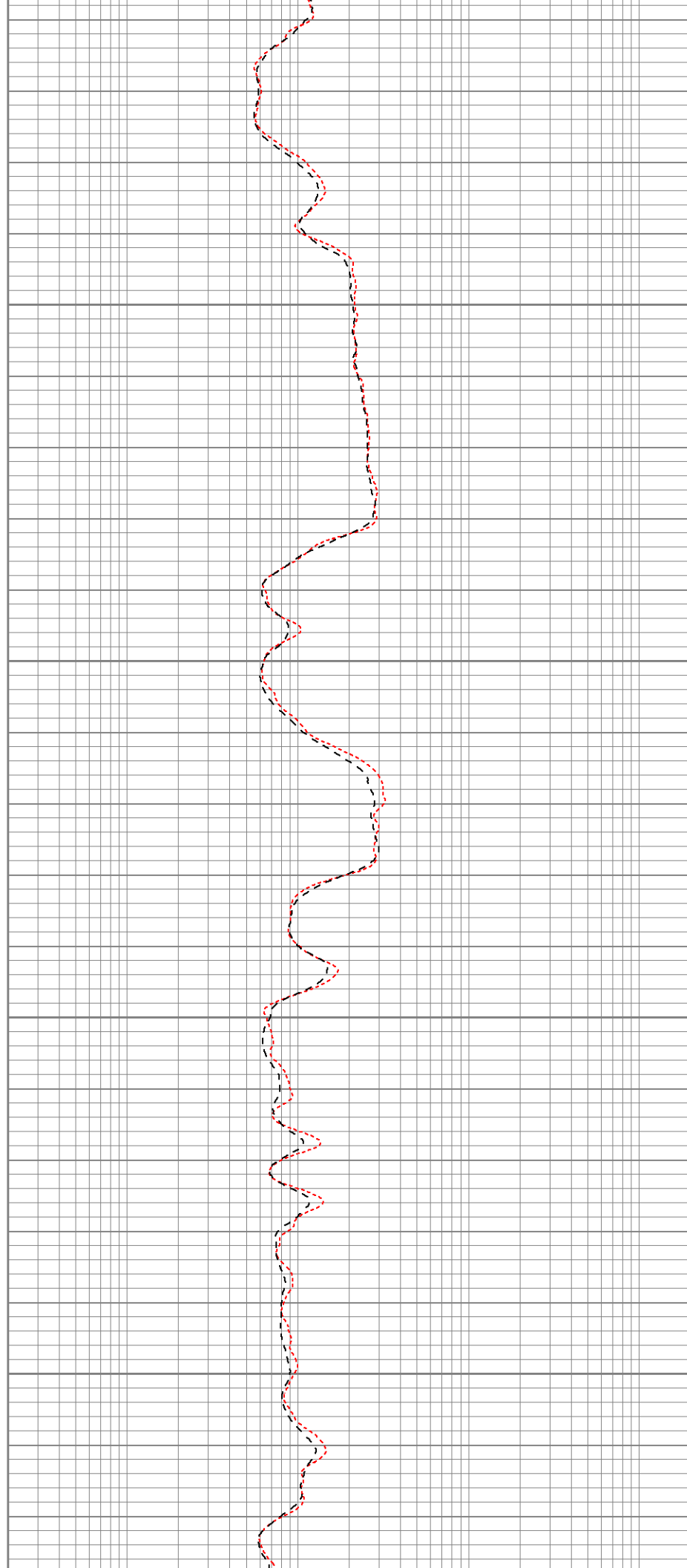


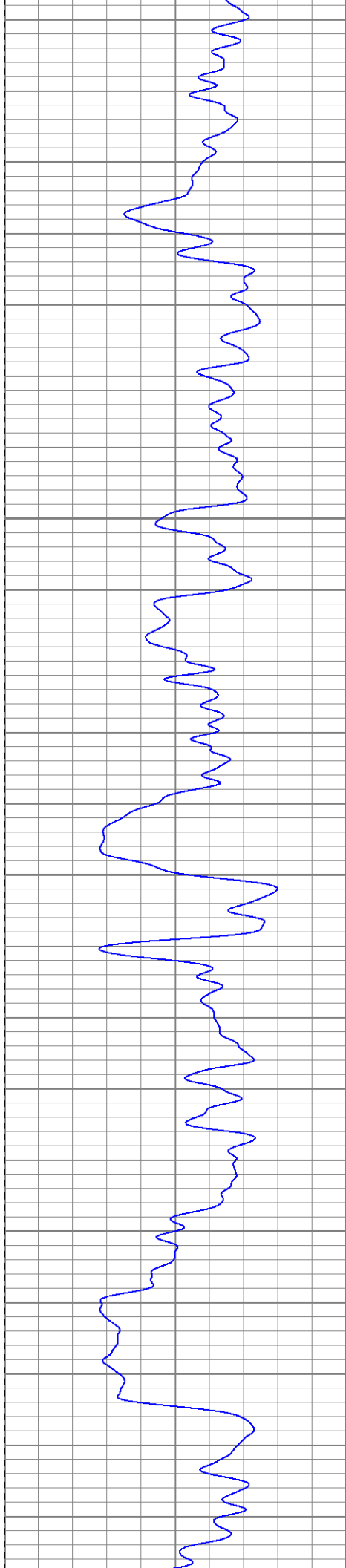
700

750

800

850



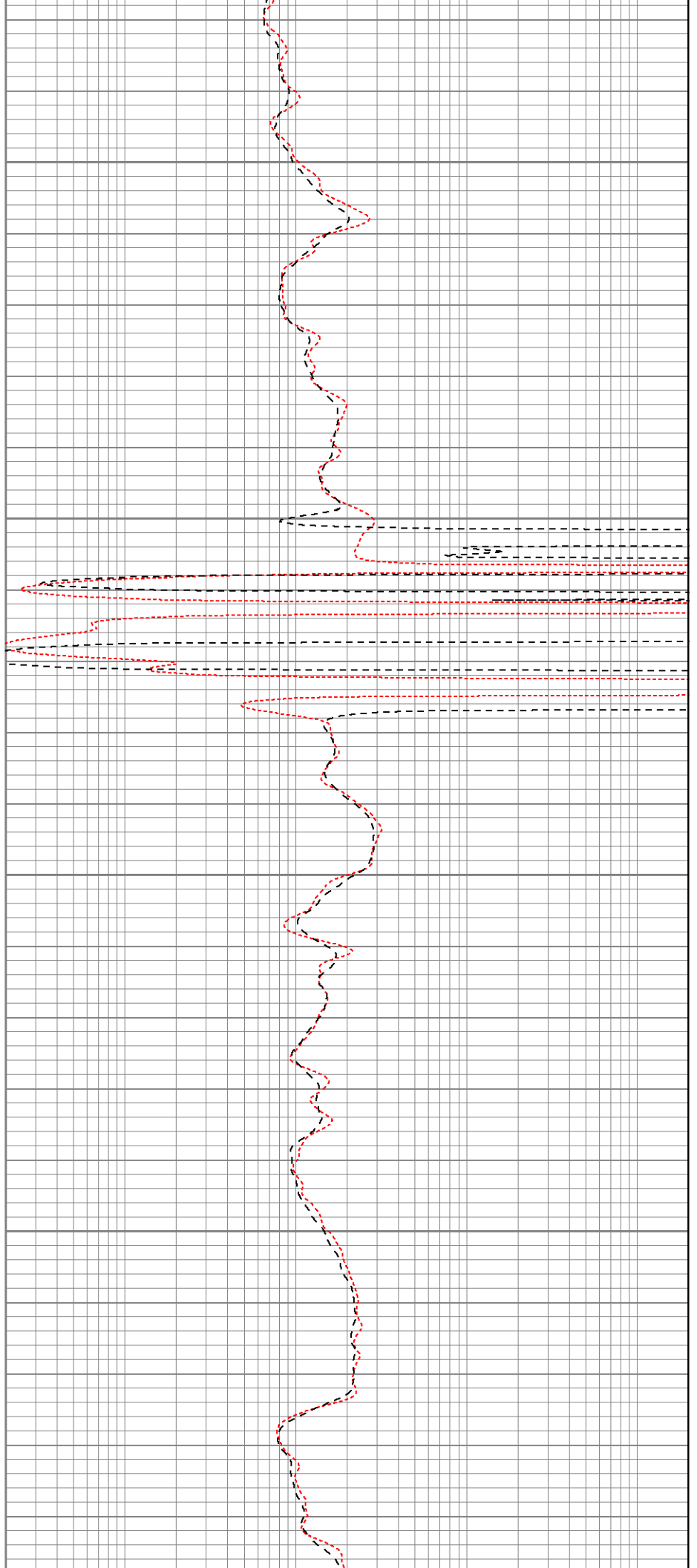


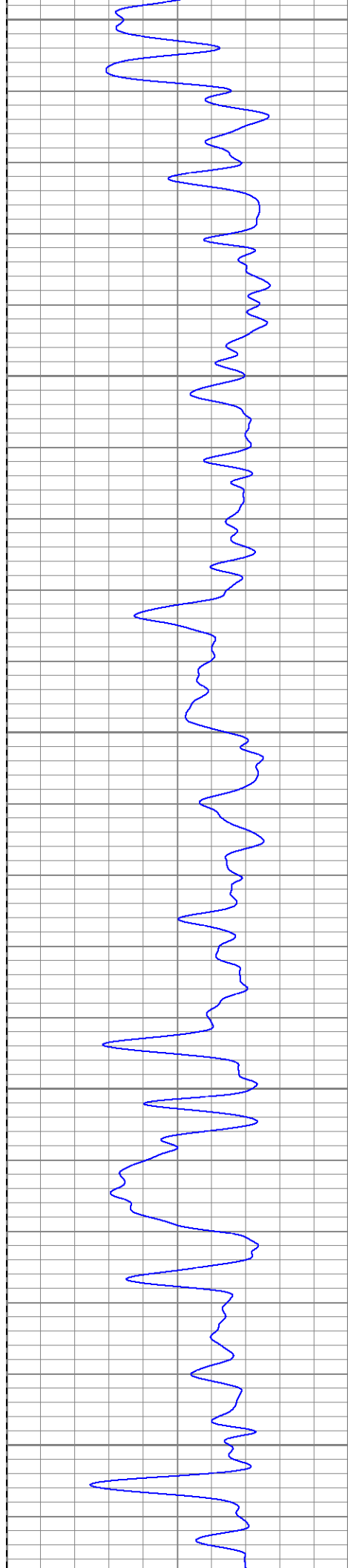
900

950

1000

1050





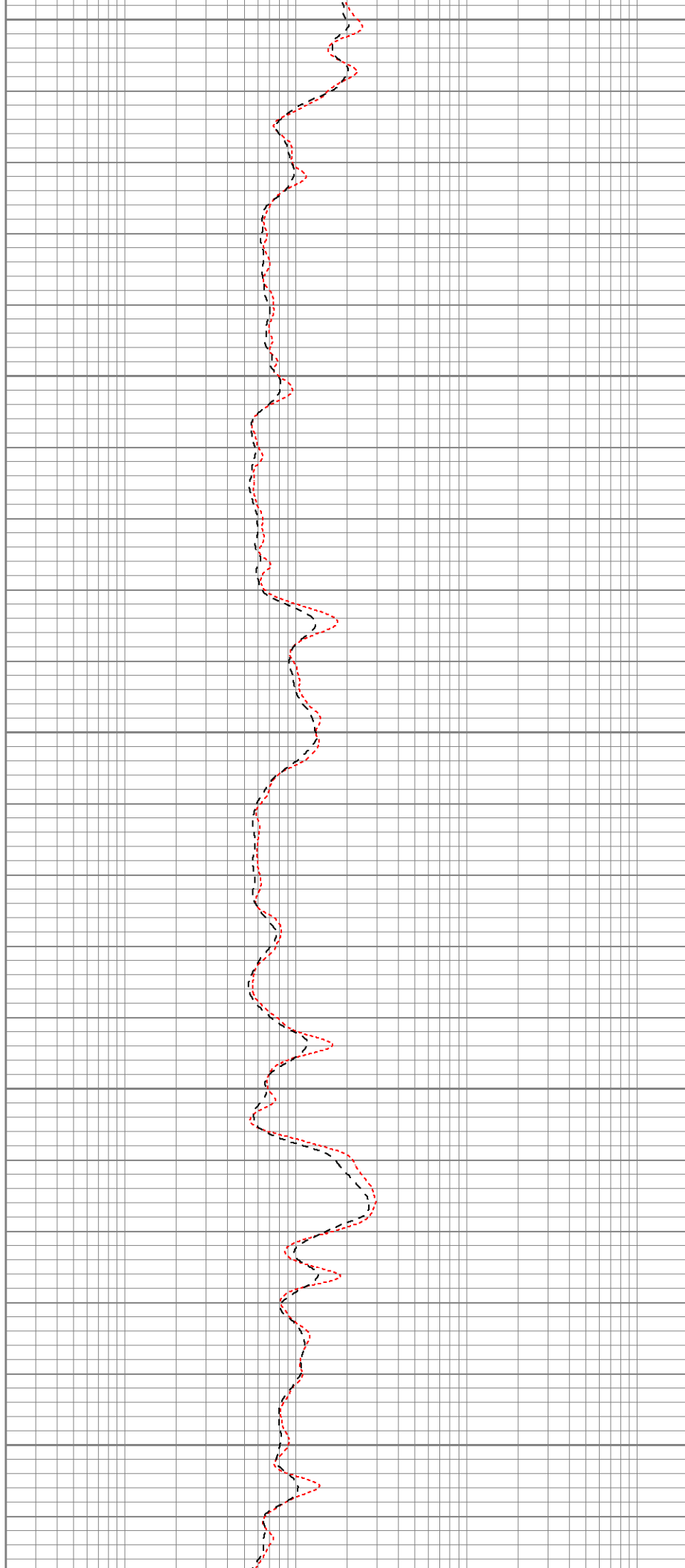
1100

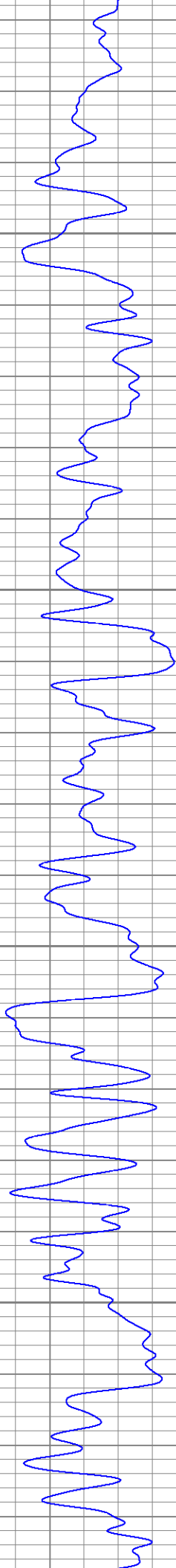
1150

1200

1250

1300



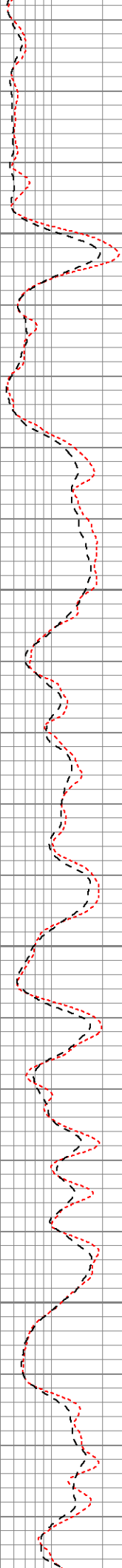


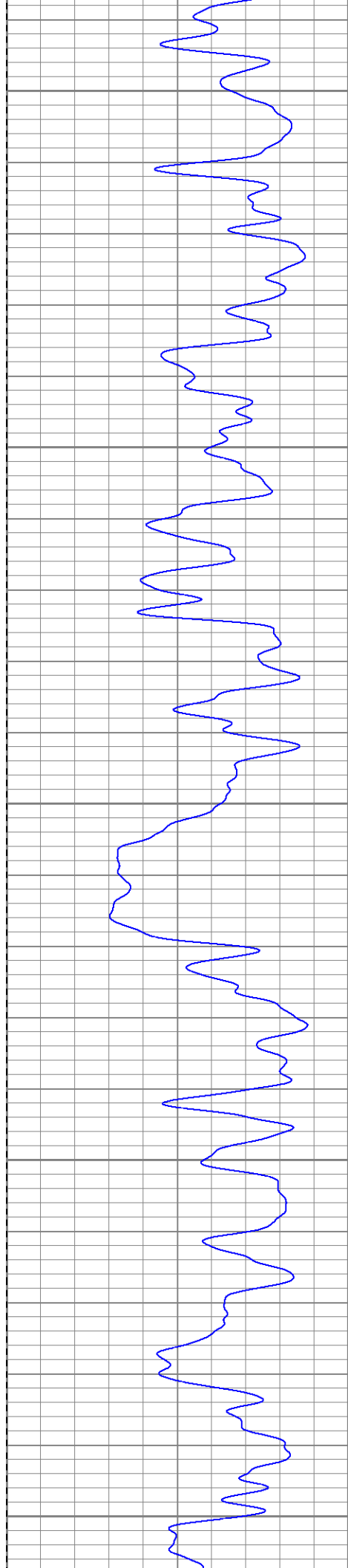
1350

1400

1450

1500





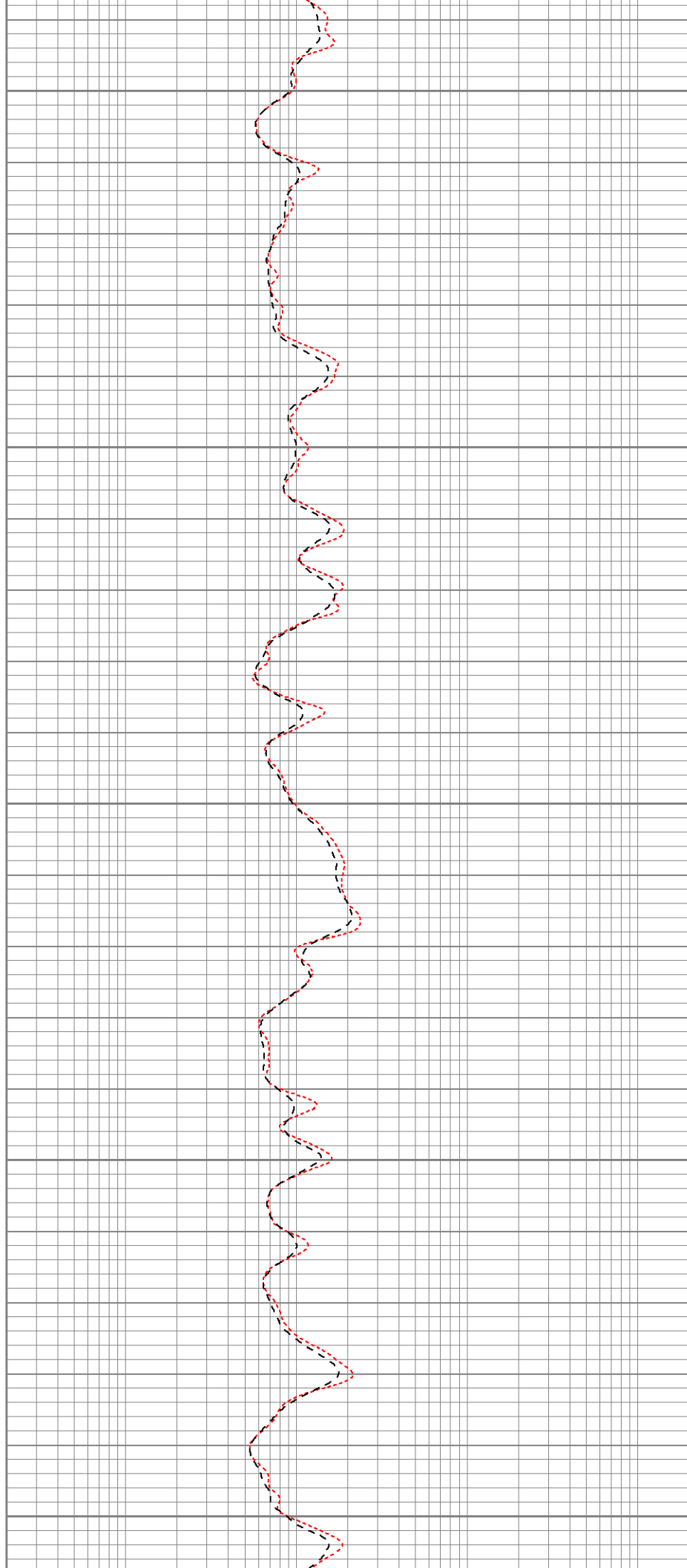
1550

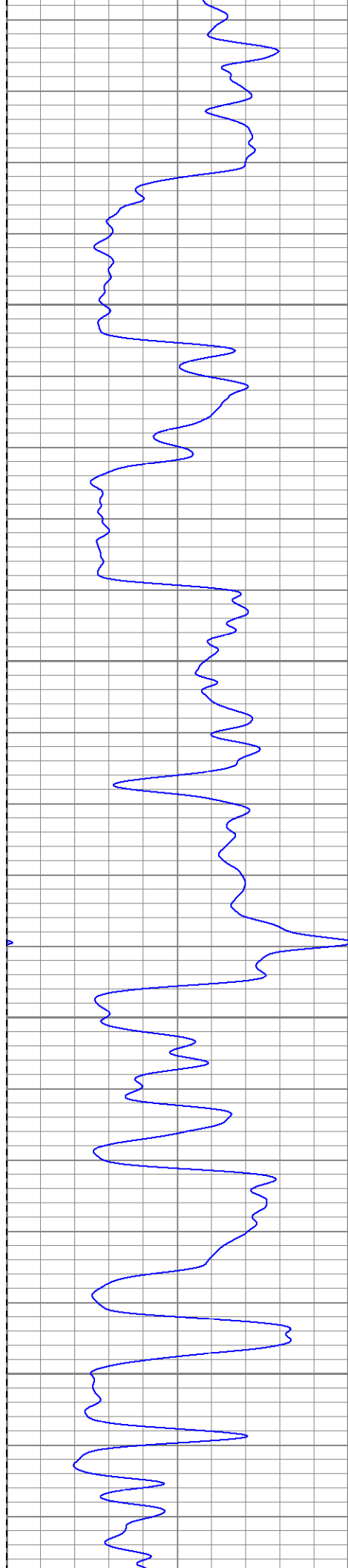
1600

1650

1700

1750



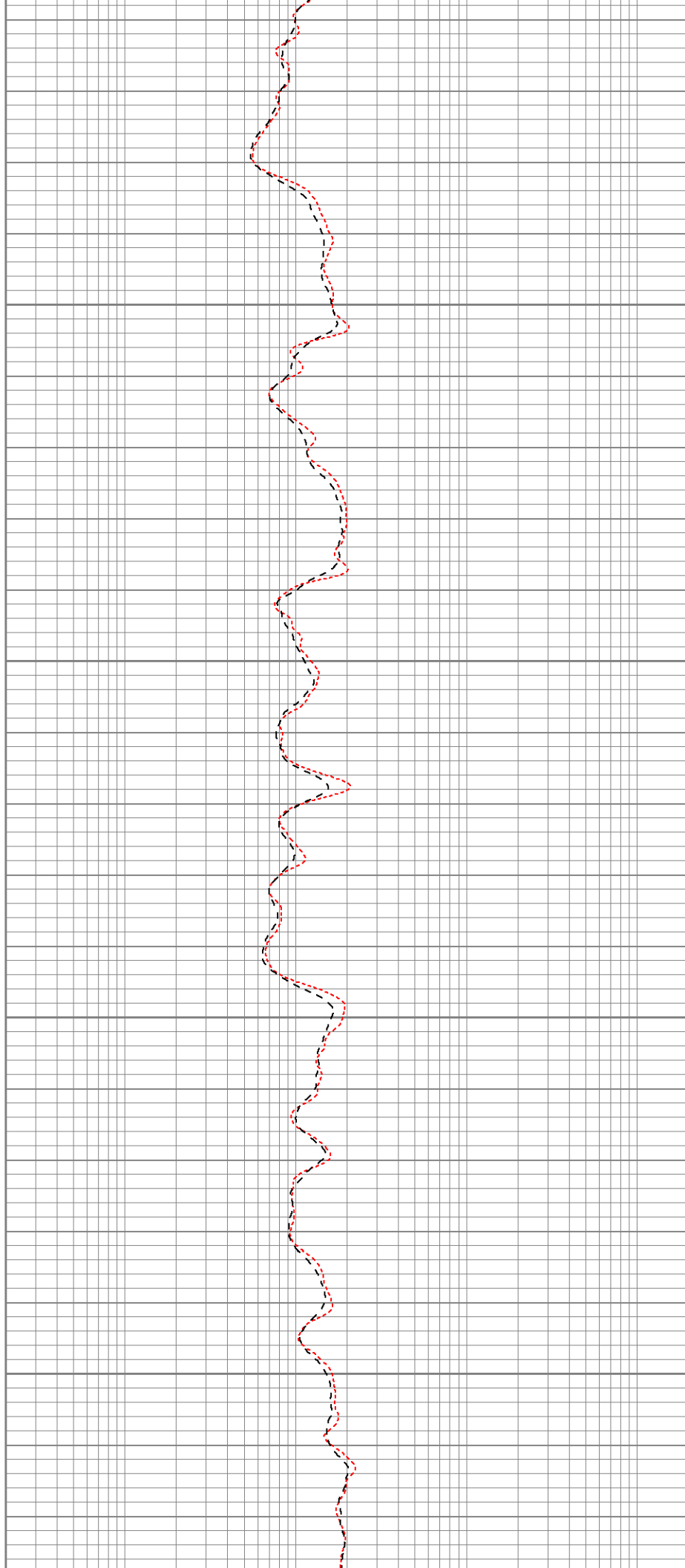


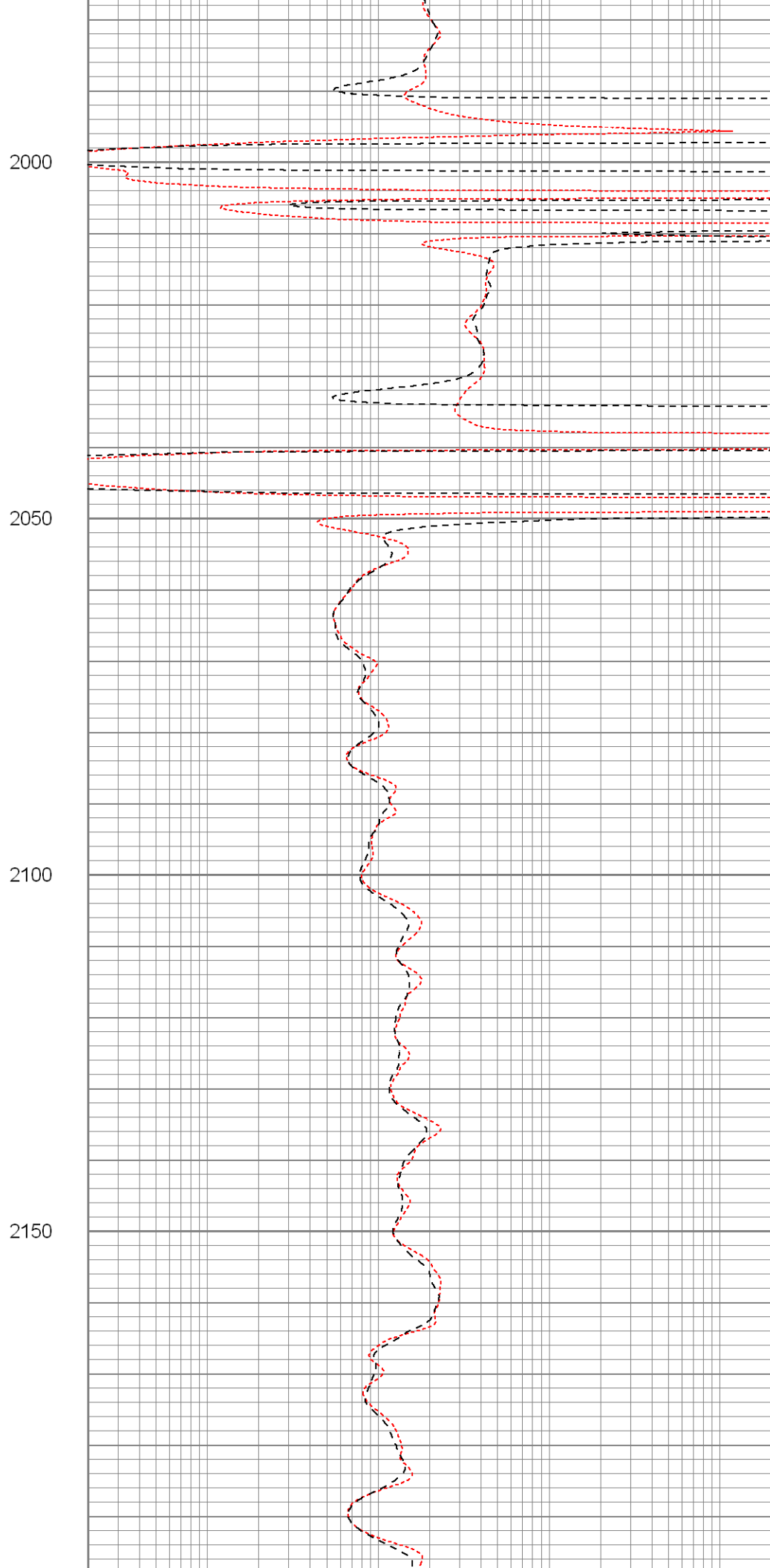
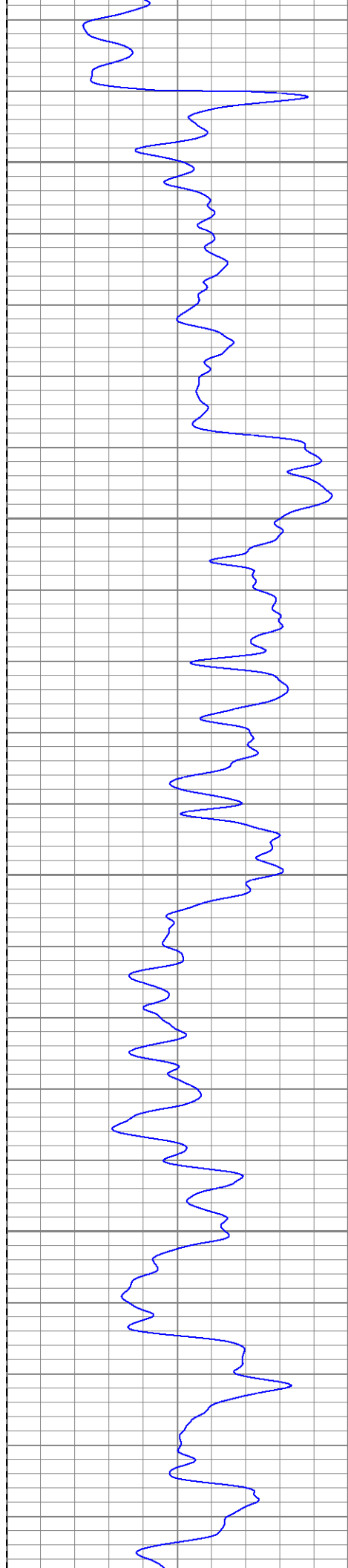
1800

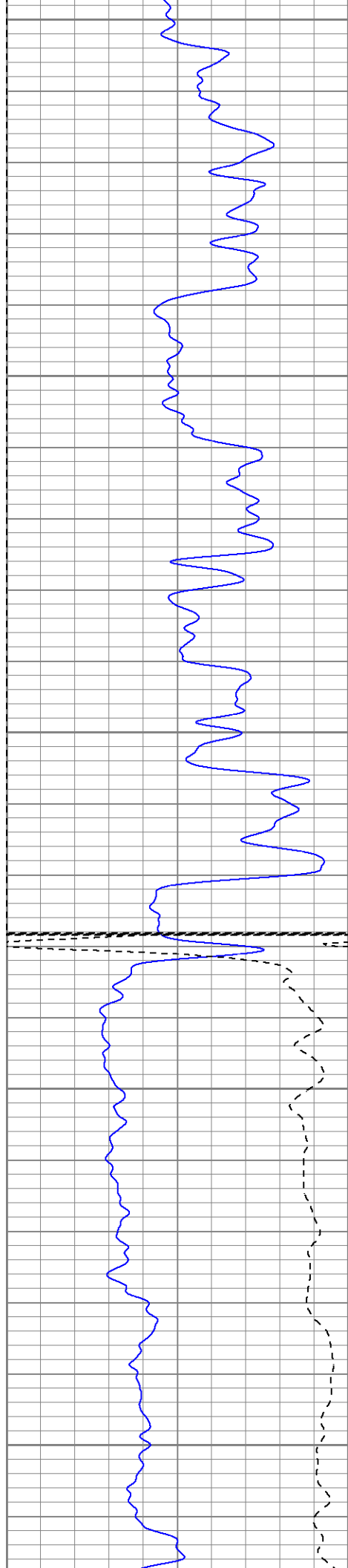
1850

1900

1950







2200

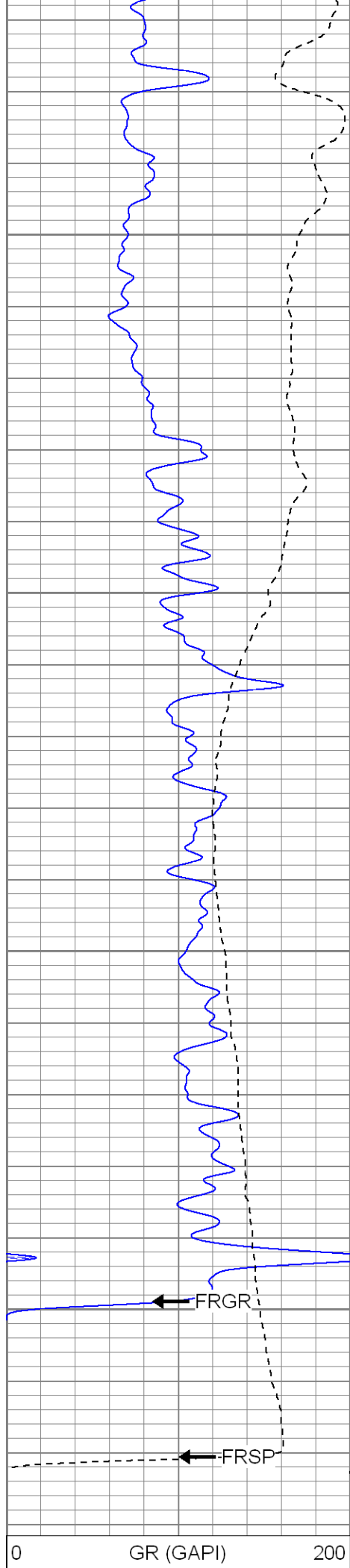
2250

2300

Fluid Level

2350

2400



2450

2500

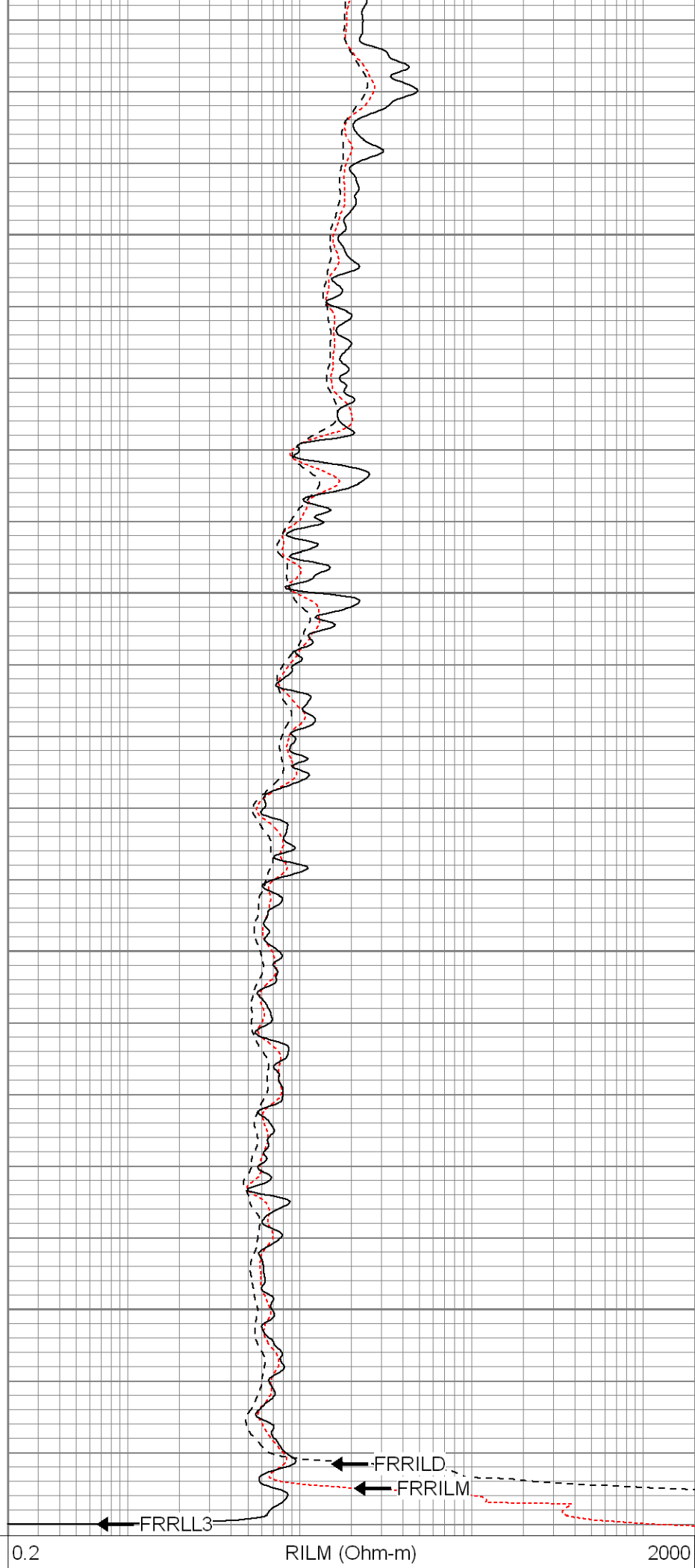
2550

2600

FRGR

FRSP

0 GR (GAPI) 200



FRRILD

FRRILM

FRRLL3

0.2 RILM (Ohm-m) 2000

-200	SP (mV)	0
------	---------	---

0.2	RILD (Ohm-m)	2000
0.2	RLL3 (Ohm-m)	2000



SUPERIOR

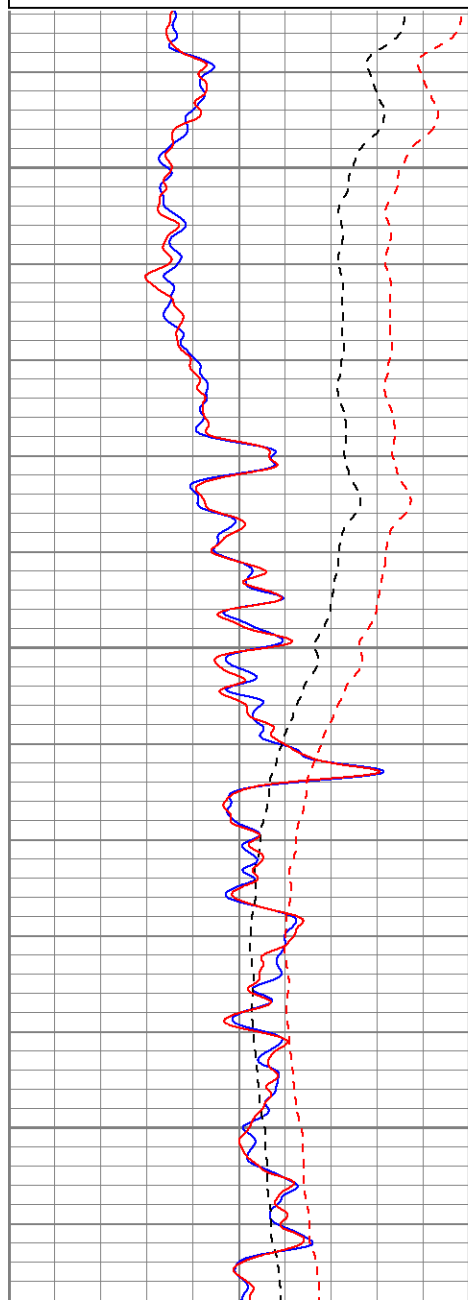
Black Lick, Pa.
Mercer, Pa.
Wooster, Oh.
Cleveland, Ok.
Trinidad, Co.

Repeat Pass

Database File: xtohre1414.db
Dataset Pathname: pass1.1
Presentation Format: dil
Dataset Creation: Sat Apr 19 06:09:32 2008 by Calc Open-Cased 070814
Charted by: Depth in Feet scaled 1:240

0	GR (GAPI)	200
-200	SP (mV)	0
0	GR-repeat (GAPI)	200
-200	SP-repeat (mV)	0

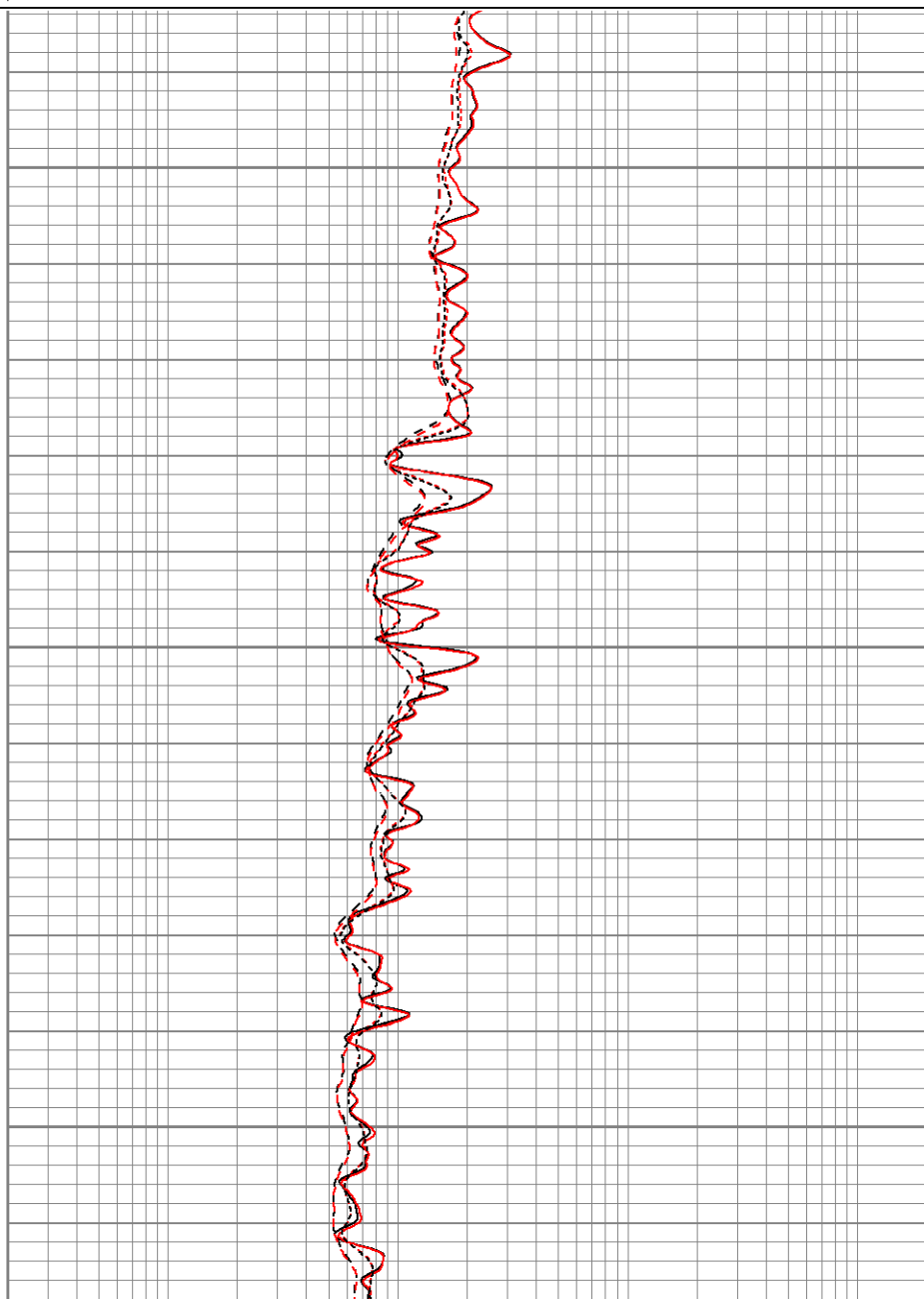
0.2	RILM (Ohm-m)	2000
0.2	RILD (Ohm-m)	2000
0.2	RLL3 (Ohm-m)	2000
0.2	RLL3-repeat (Ohm-m)	2000
0.2	RILM-repeat (Ohm-m)	2000
0.2	RILD-repeat (Ohm-m)	2000

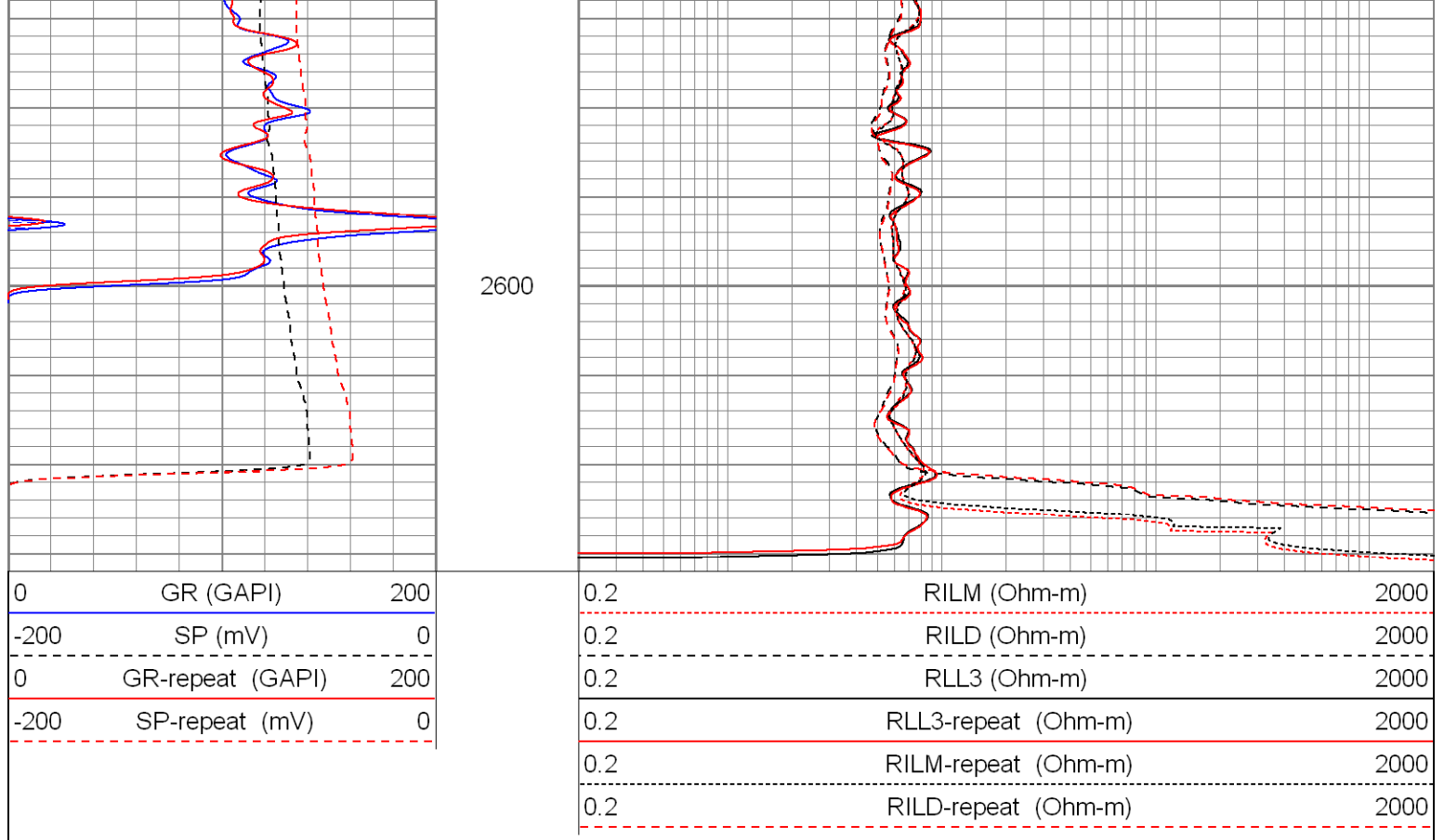


2450

2500

2550





Calibration Report								
Database File:		xtohre1414.db						
Dataset Pathname:		pass1						
Dataset Creation:		Sat Apr 19 05:39:31 2008 by Log Open-Cased 070814						
Dual Induction Calibration Report								
Serial-Model:		5375-G						
Surface Cal Performed:		Tue Apr 01 11:00:37 2008						
Downhole Cal Performed:		Tue Apr 01 11:01:24 2008						
Surface Calibration								
		Readings		References			Results	
Loop:	Air	Loop		Air	Loop		m	b
Deep	0.001	0.620	V	0.000	500.000	mmho-m	807.237	-0.611
Medium	0.003	0.742	V	0.000	550.000	mmho-m	743.848	-2.179
Internal:	Zero	Cal		Zero	Cal		m	b
Deep	0.001	0.620	V	0.000	500.000	mmho-m	807.141	-0.502
Medium	0.003	0.742	V	0.000	550.000	mmho-m	743.959	-2.189
Downhole Calibration								
		Readings		References			Results	
Internal:	Zero	Cal		Zero	Cal		m	b
Deep	-0.493	500.241	mmho-m	-0.108	499.951	mmho-m	0.999	0.384
Medium	0.182	550.341	mmho-m	0.009	549.927	mmho-m	1.000	-0.172
Shallow	2.506	0.008	V	500.000	2.000	Ohm-m	124.000	-3.000

Serial Number: 2542T
 Tool Model: CDLP
 Performed: Wed Apr 09 15:14:20 2008

	Reference	Reading
Low Reference:	55.00 degF	3.11 V
High Reference:	160.00 degF	5.35 V
Gain:	46.88	
Offset:	-90.78	
Delta Spacing	1	

Compensated Density Calibration Report

Serial-Model: 2542-T2
 Source / Verifier: /
 Master Calibration Performed: Fri Apr 04 08:43:29 2008

Master Calibration

	Density		Far Detector	Near Detector	
Magnesium	1.710	g/cc	725.64	339.44	cps
Aluminum	2.590	g/cc	162.65	232.88	cps
Spine Angle = 75.86			Density/Spine Ratio = 0.571		
	Size		Reading		
Small Ring	8.00	in	1.33	V	
Large Ring	14.00	in	2.67	V	

Gamma Ray Calibration Report

Serial Number: 2001
 Tool Model: OH
 Performed: Fri Apr 04 09:53:13 2008

Calibrator Value: 1.0 GAPI

Background Reading: 0.0 cps
 Calibrator Reading: 1.0 cps

Sensitivity: 0.2500 GAPI/cps


Neutron Calibration Report

Serial Number: 5108
 Tool Model: PROBE
 Performed: Wed Apr 09 15:10:14 2008

Calibrator Value: 1 NAPI

Calibrator Reading: 1 cps

Sensitivity: 1 NAPI/cps

Sensor	Offset (ft)	Schematic	Description	Len (ft)	OD (in)	Wt (lb)
NEU	37.47		None	0.75	1.50	5.00
			NEU-PROBE (5108) Probe Epithermal	4.92	3.63	85.00

GR	31.94		GR-OH (2001) 2001	3.56	3.25	40.00
			CDL-T2 (2542) Gearhart	9.29	4.00	201.00
LSD	23.19					
DCAL	22.98					
SSD	22.73		TEMP-CDLP (2542T) Probe Density/Temp	0.01	10.00	1.00
TEMP	22.55					
CILD	10.60		DIL-G (5375) Gearhart	21.47	4.00	345.00
SP	10.60					
CILM	6.89					
RLL3	1.70					
Dataset: xtohre1414.db: field/well/run1/pass1						
Total Length: 40.00 ft						
Total Weight: 677.00 lb						
O.D. 10.00 in						