



SUPERIOR
Black Lick, Pa.
Mercer, Pa.
Wooster, Oh.
Cleveland, Ok.
Trinidad, Co.

DUAL INDUCTION LOG

Company XTO Energy Inc.
Well Hill Ranch East 23-07
Field Purgatoire River
County Las Animas State Colorado

Location: API # : 05 071 09448 00

1364' FNL & 2623' FEL

SEC 23 TWP 34S RGE 67W

Other Services
CDL
NEUTRON

Elevation

Permanent Datum Ground Level Elevation 7844'
Log Measured From Ground Level
Drilling Measured From Ground Level

K.B. -----
D.F. -----
G.L. 7844'

Date 4-15-08

Run Number One

Depth Driller 2550'

Depth Logger 2547'

Bottom Logged Interval 2545'

Top Log Interval Surface Casing

Casing Driller 8 5/8" @ 486'

Casing Logger 488'

Bit Size 7 7/8"

Type Fluid in Hole Water

Density / Viscosity ///

pH / Fluid Loss ///

Source of Sample ///

Rm @ Meas. Temp ///

Rmf @ Meas. Temp ///

Rmc @ Meas. Temp ///

Source of Rmf / Rmc ///

Rm @ BHT ///

Time Circulation Stopped 6:00 P.M.

Time Logger on Bottom 8:35 P.M.

Maximum Recorded Temperature 118 DEG F

Equipment Number T697

Location Trinidad

Recorded By J. Cappellucci

Witnessed By Mr. Don Johnson

<<< Fold Here >>>

All interpretations are opinions based on inferences from electrical or other measurements and we cannot and do not guarantee the accuracy or correctness of any interpretation, and we shall not, except in the case of gross or willful negligence on our part, be liable or responsible for any loss, costs, damages, or expenses incurred or sustained by anyone resulting from any interpretation made by any of our officers, agents or employees. These interpretations are also subject to our general terms and conditions set out in our current Price Schedule.

Comments

Well Directions:

Lorencito, 2.2 miles past Compressor station take right,
at next Y stay right up hill, At top of hill take hard left,
take third left, third drive through location is HRE 23-07.



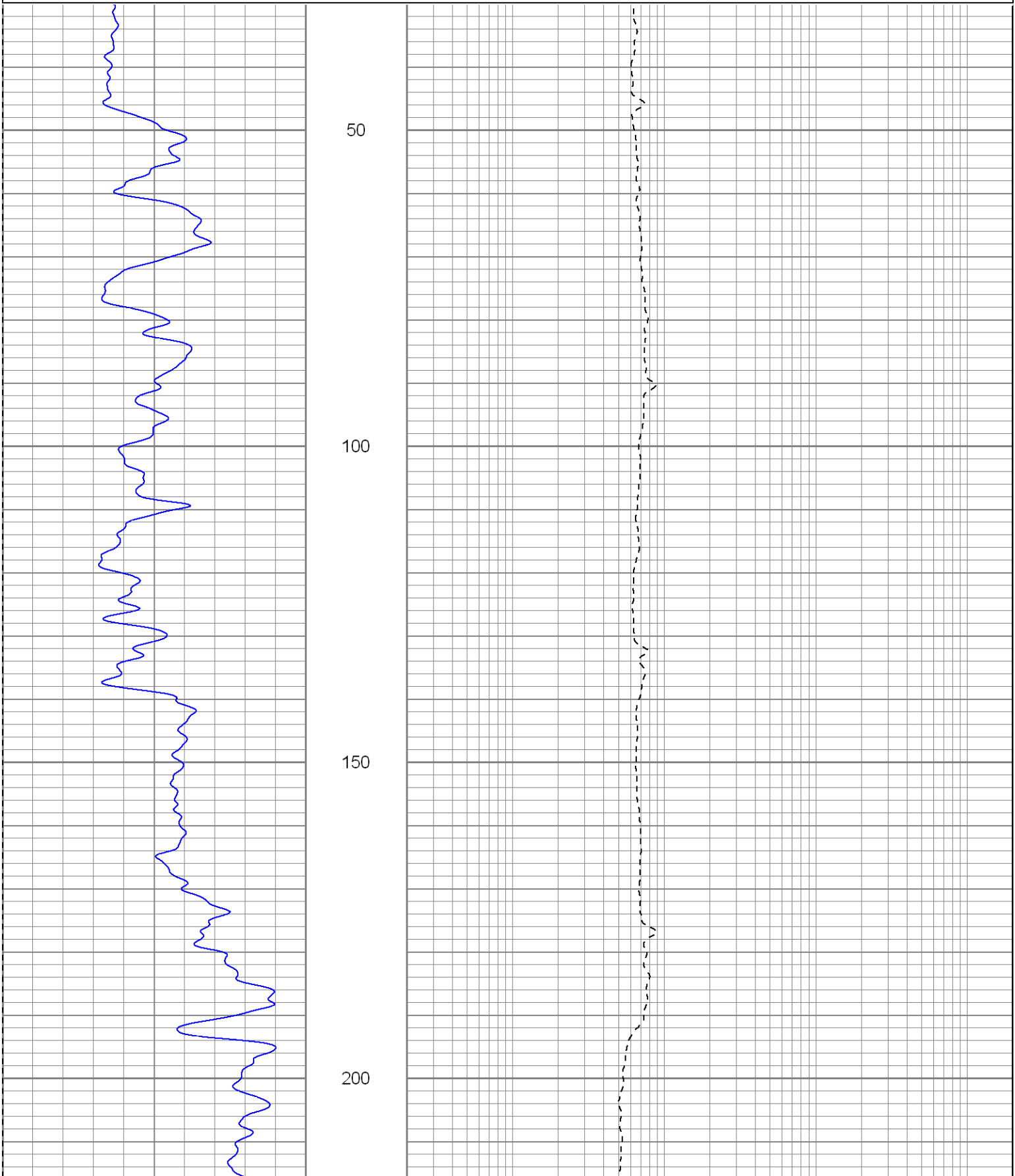
SUPERIOR
Black Lick, Pa.
Mercer, Pa.
Wooster, Oh.
Cleveland, Ok.
Trinidad, Co.

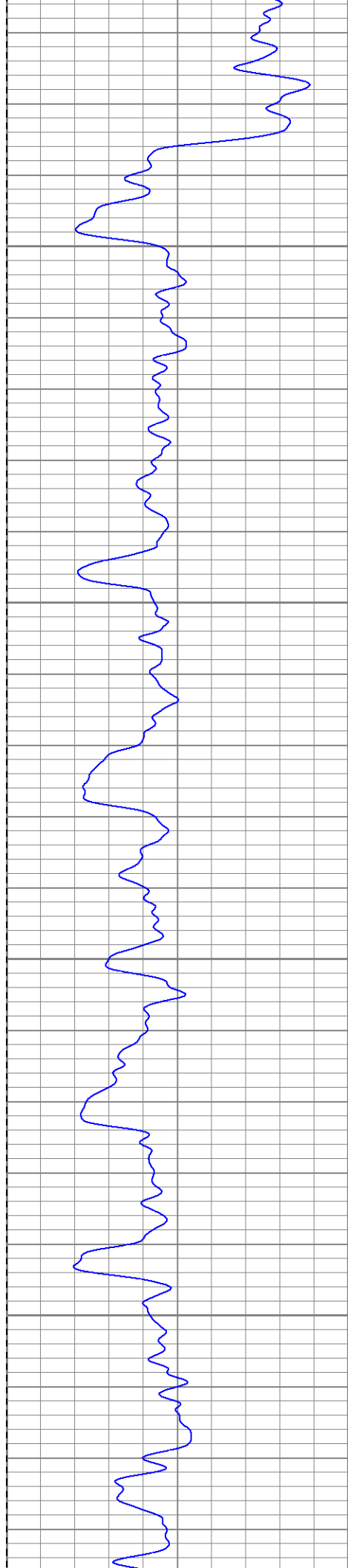
Main Pass

Database File: xtohre2307.db
Dataset Pathname: pass2.1
Presentation Format: dil
Dataset Creation: Tue Apr 15 22:26:04 2008 by Calc Open-Cased 070814
Charted by: Depth in Feet scaled 1:240

0	GR (GAPI)	200
-200	SP (mV)	0

0.2	RILM (Ohm-m)	2000
0.2	RILD (Ohm-m)	2000
0.2	RLL3 (Ohm-m)	2000



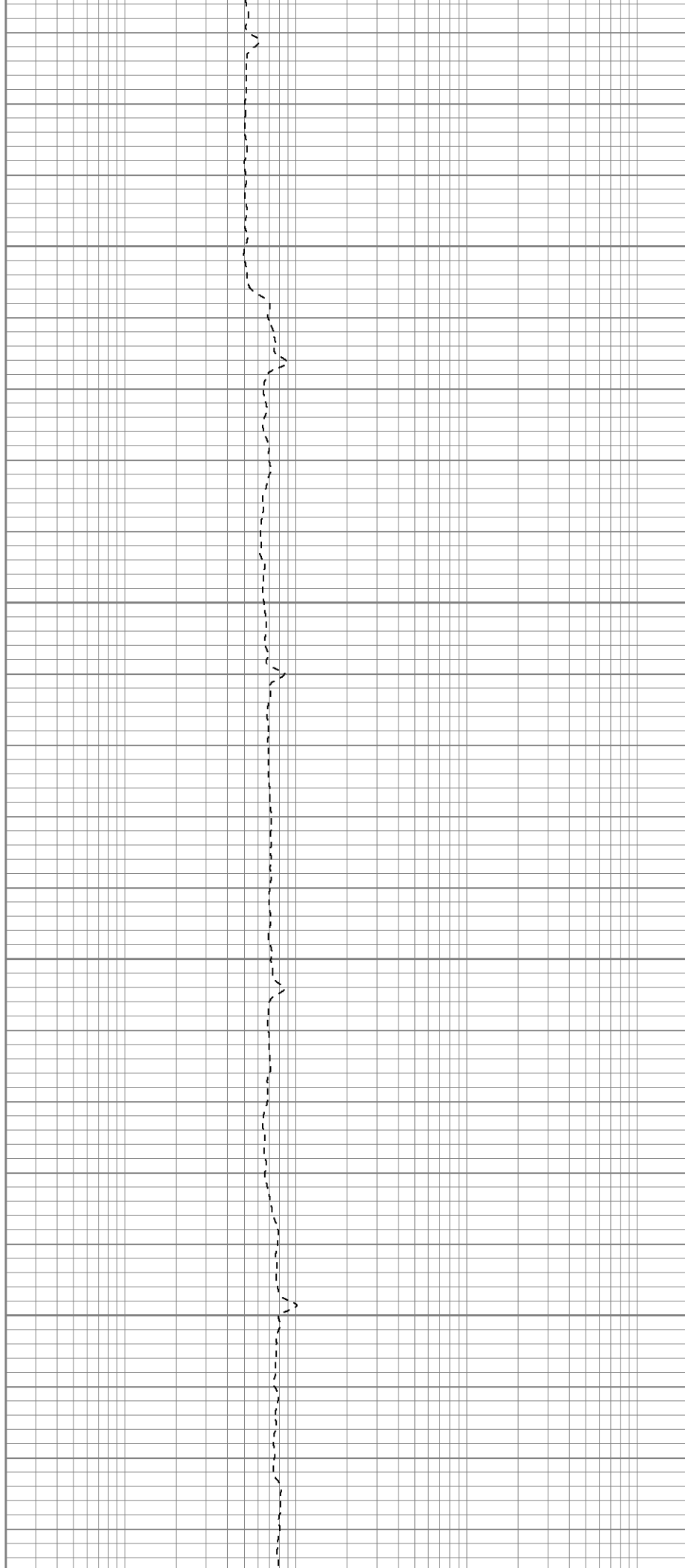


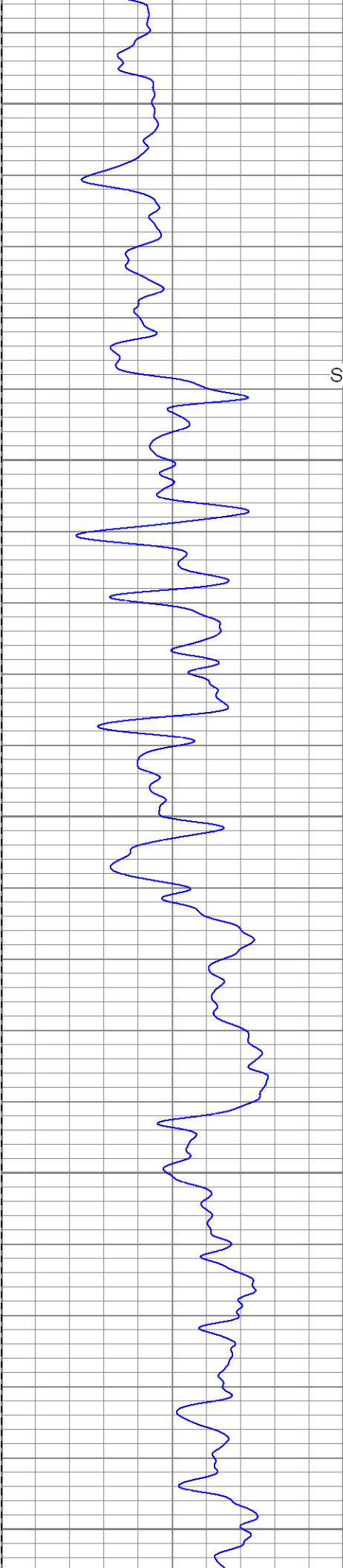
250

300

350

400





450

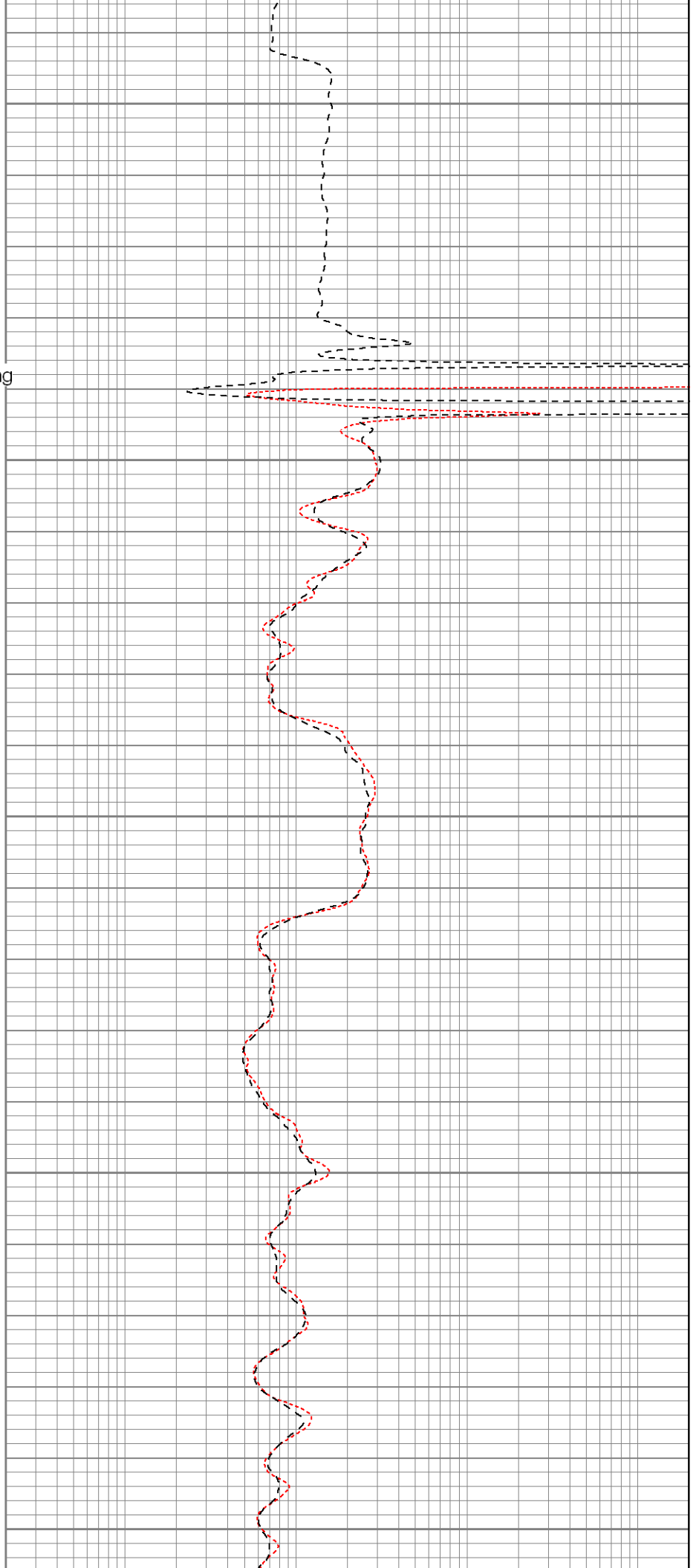
Surface Casing

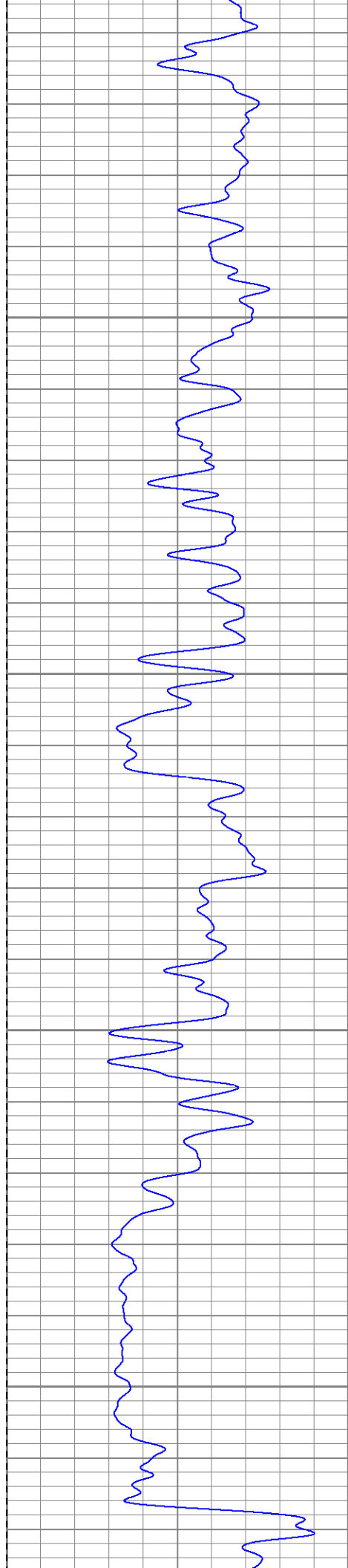
500

550

600

650



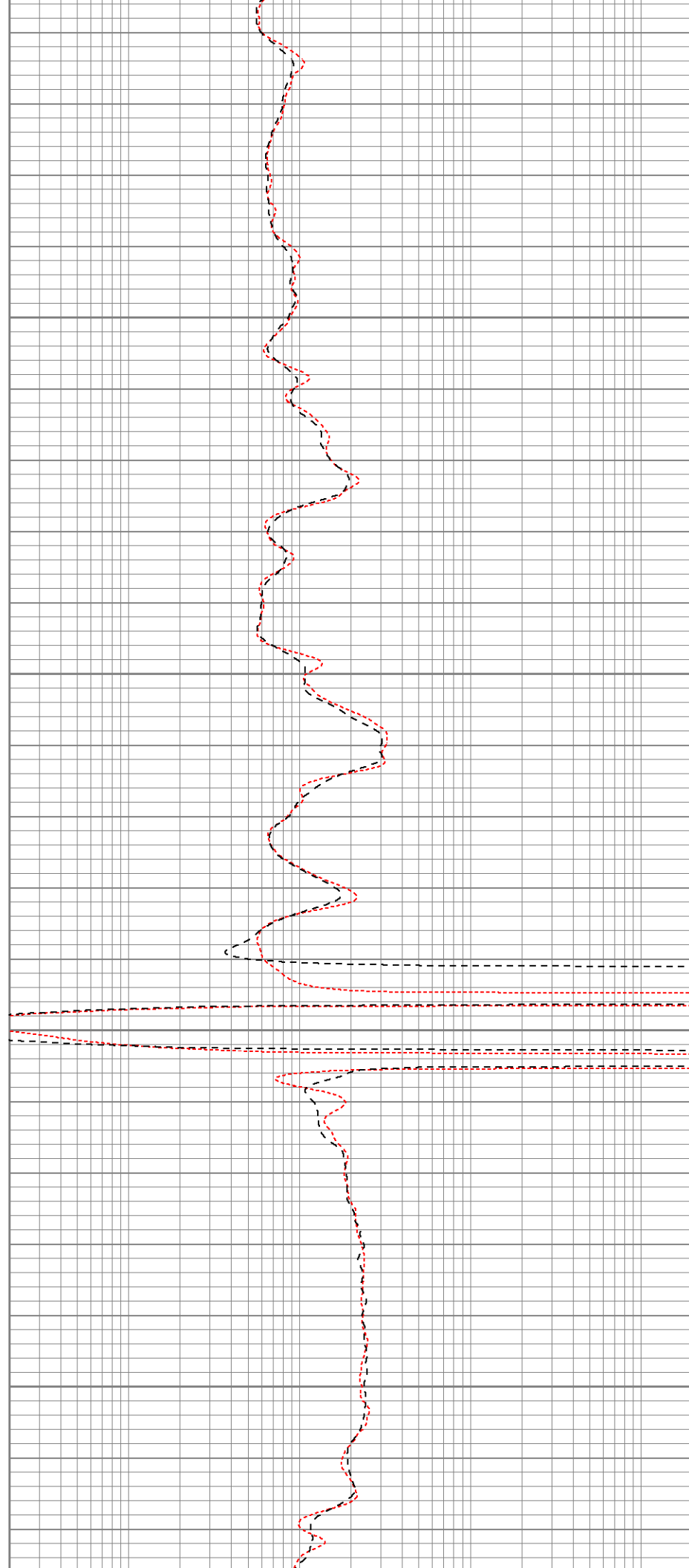


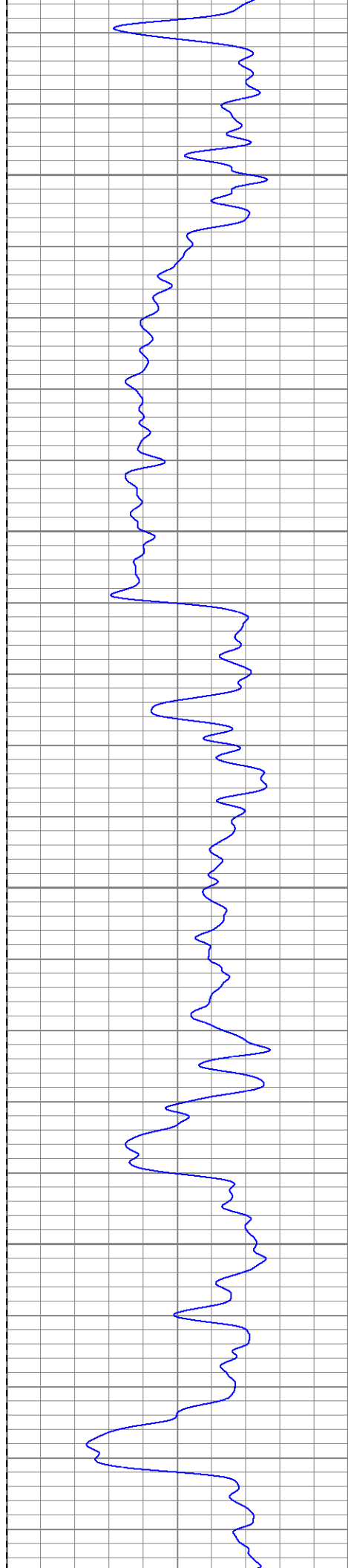
700

750

800

850



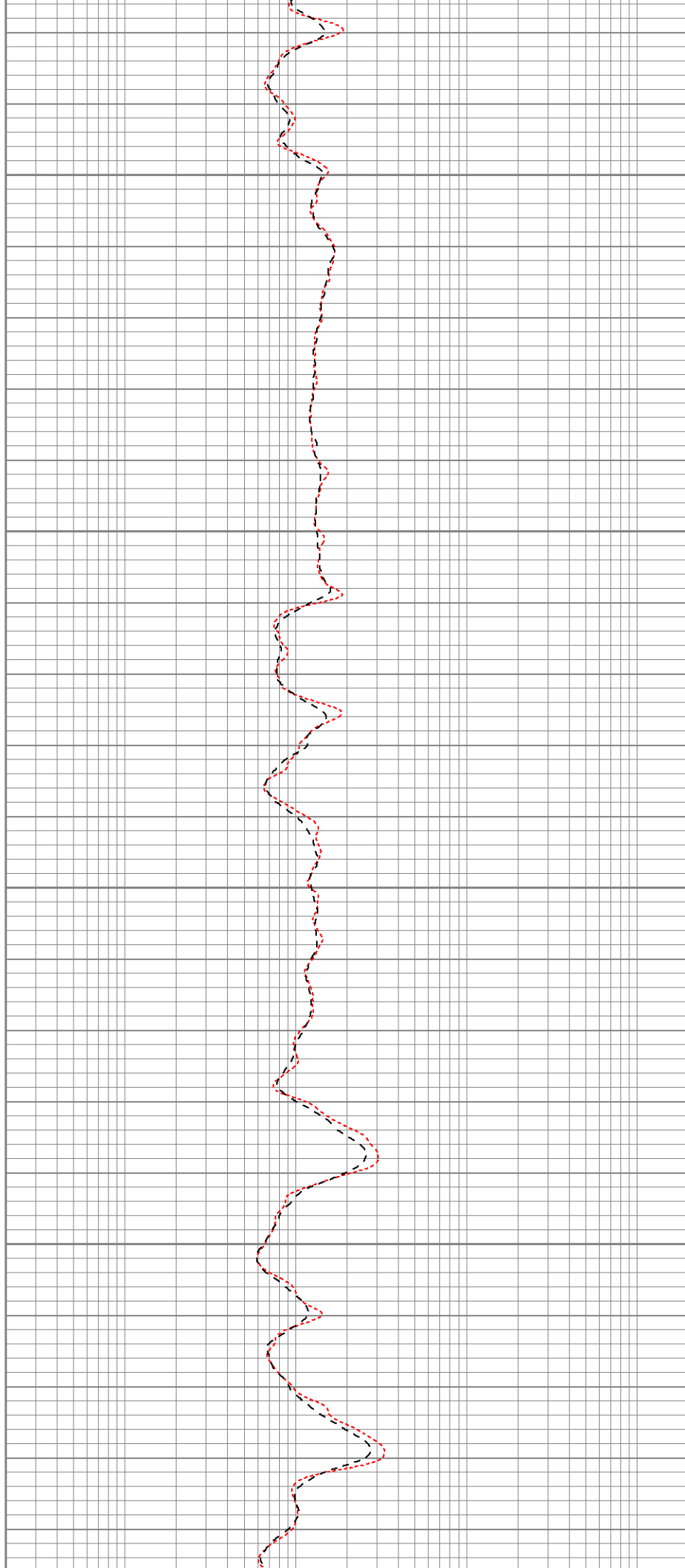


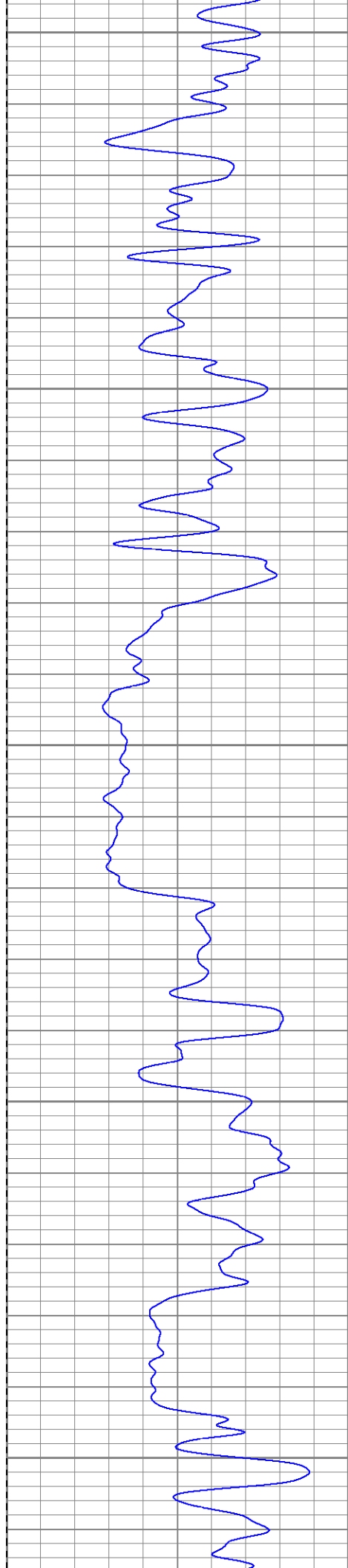
900

950

1000

1050





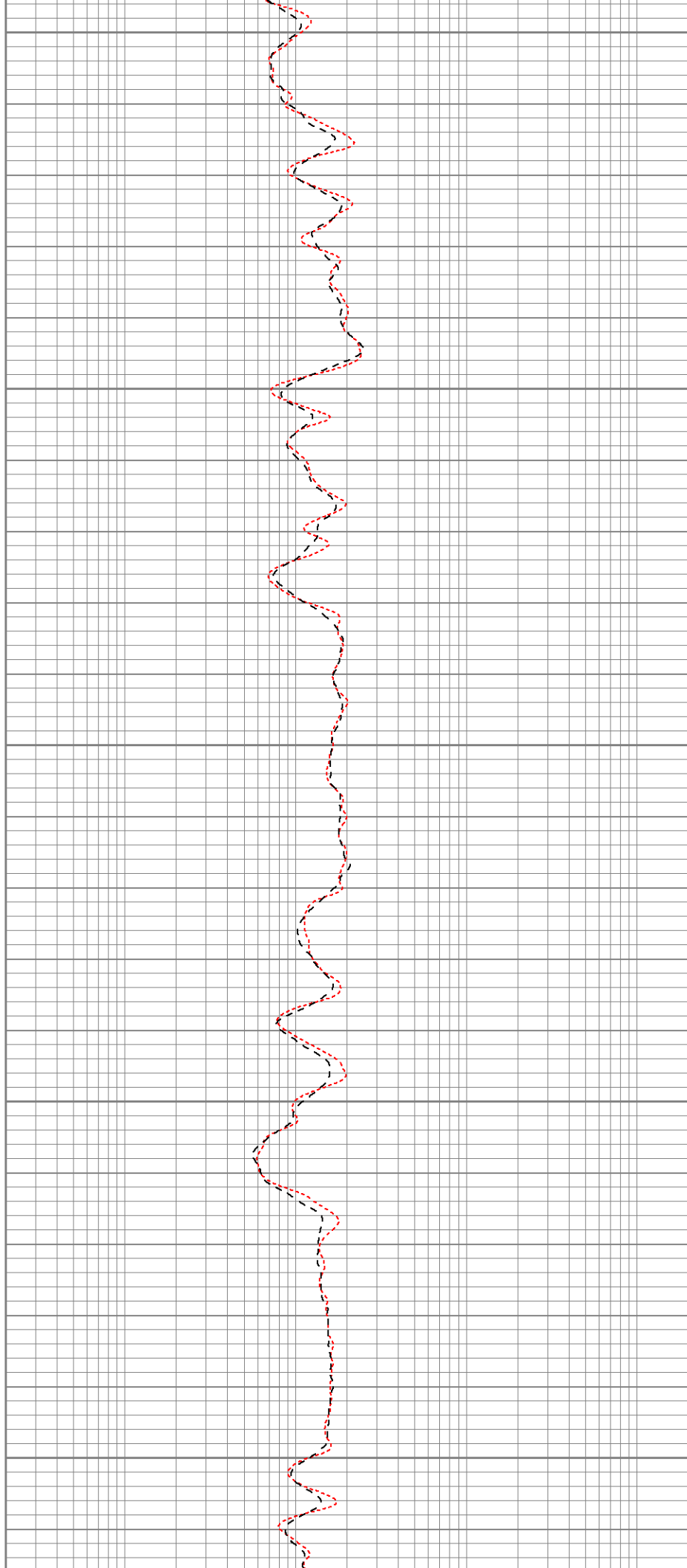
1100

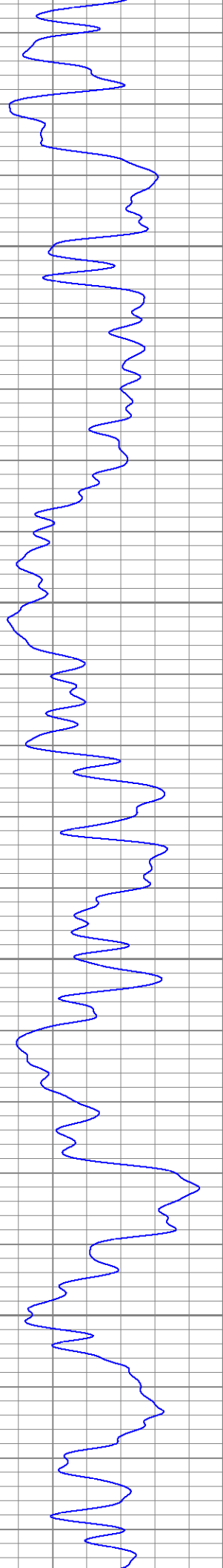
1150

1200

1250

1300



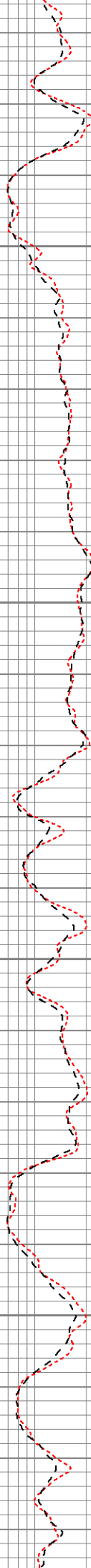


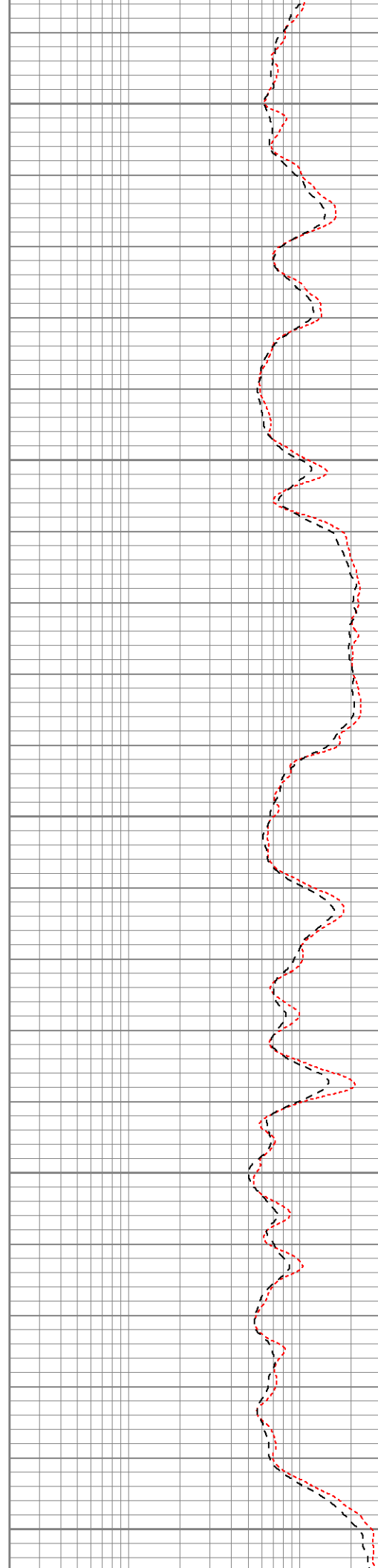
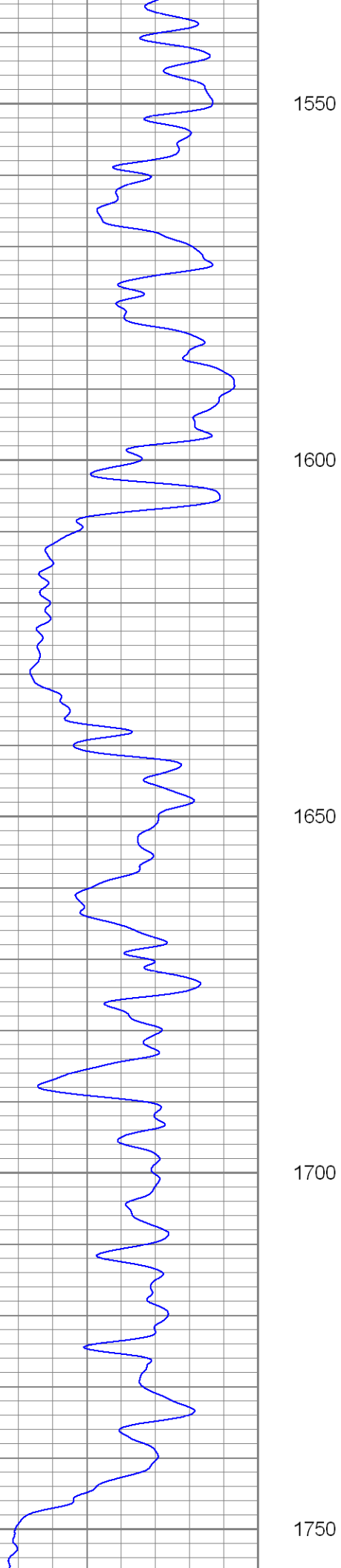
1350

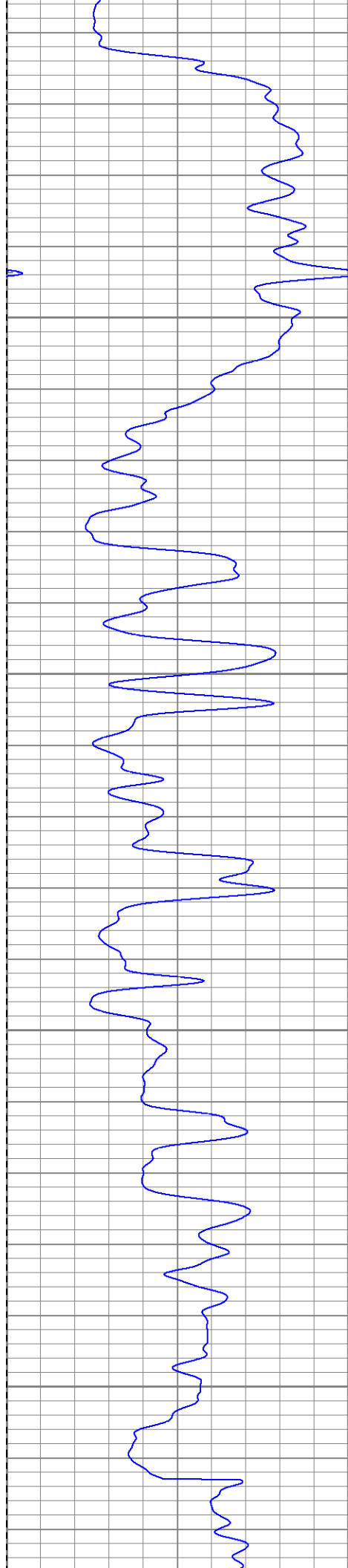
1400

1450

1500





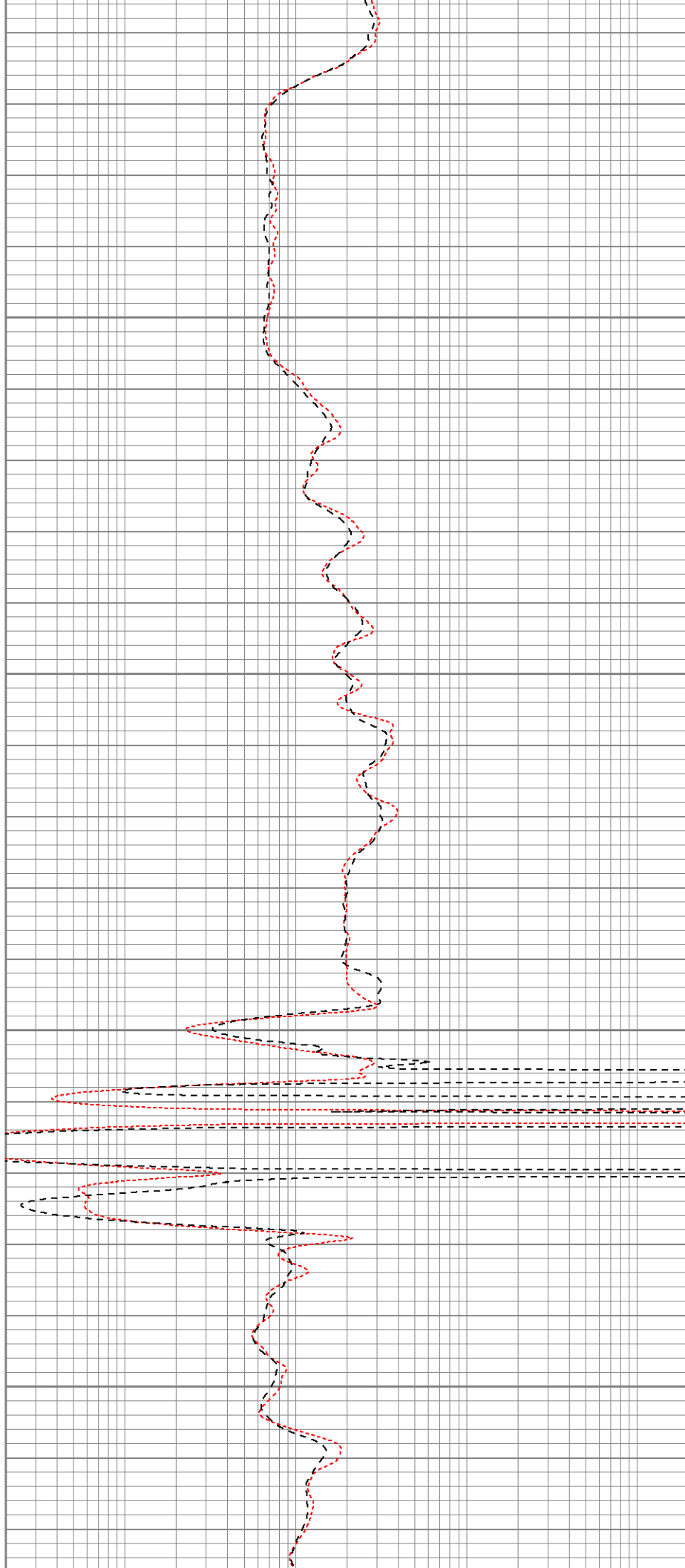


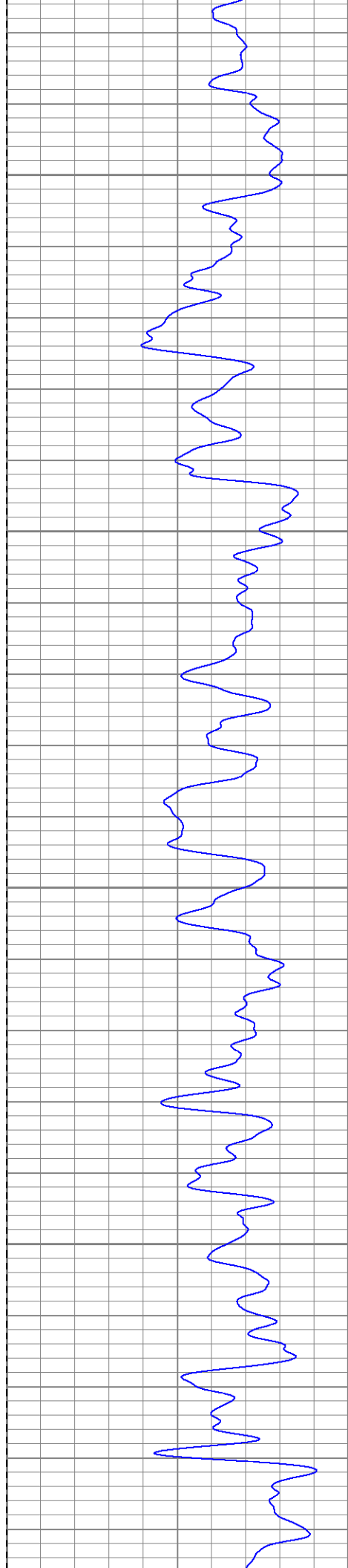
1800

1850

1900

1950



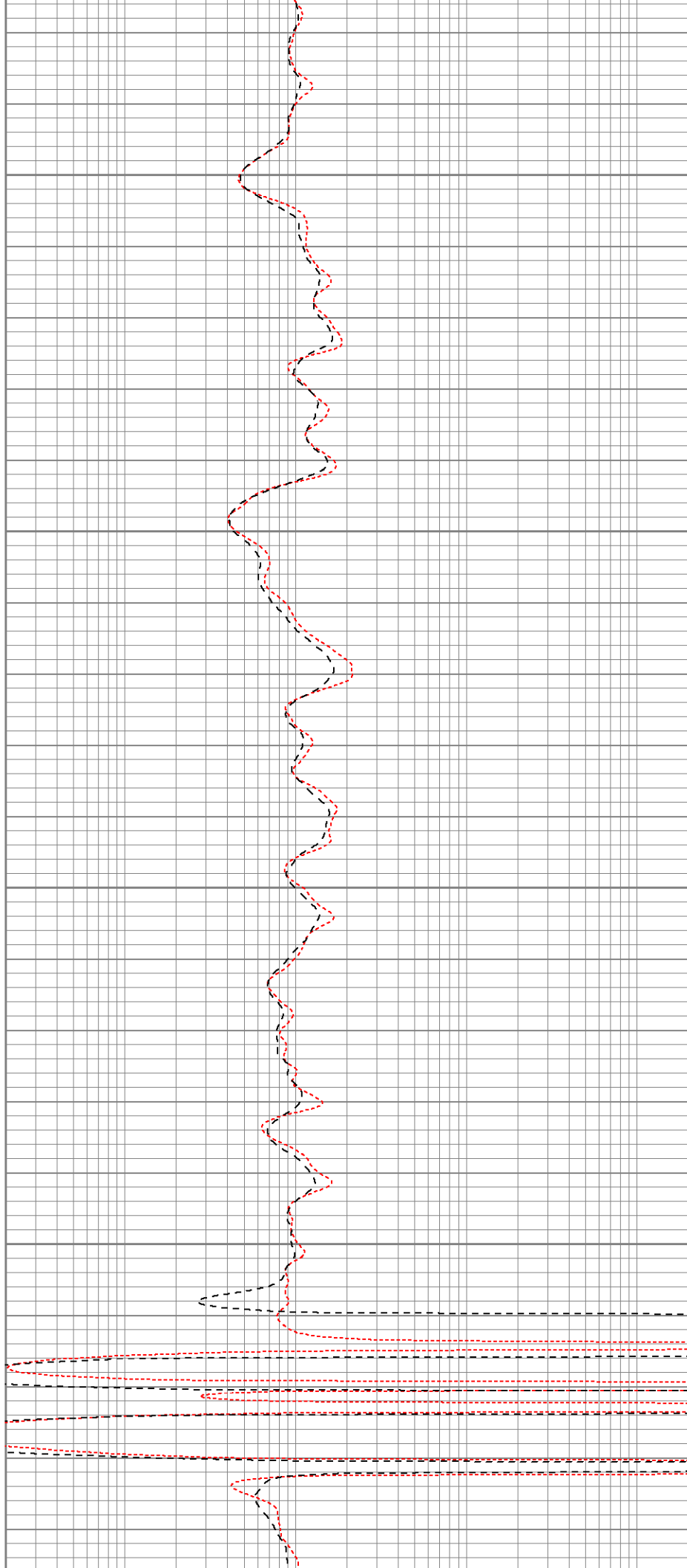


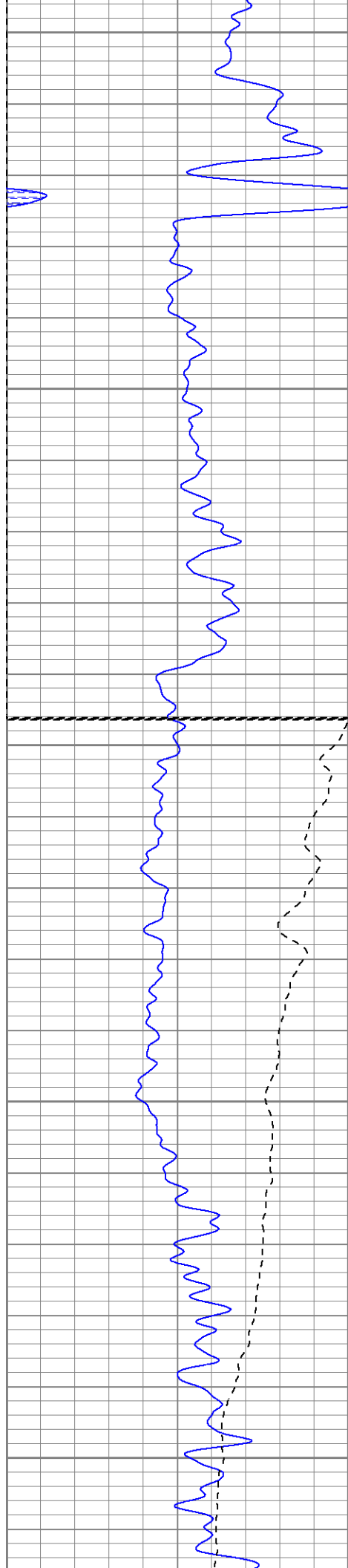
2000

2050

2100

2150





2200

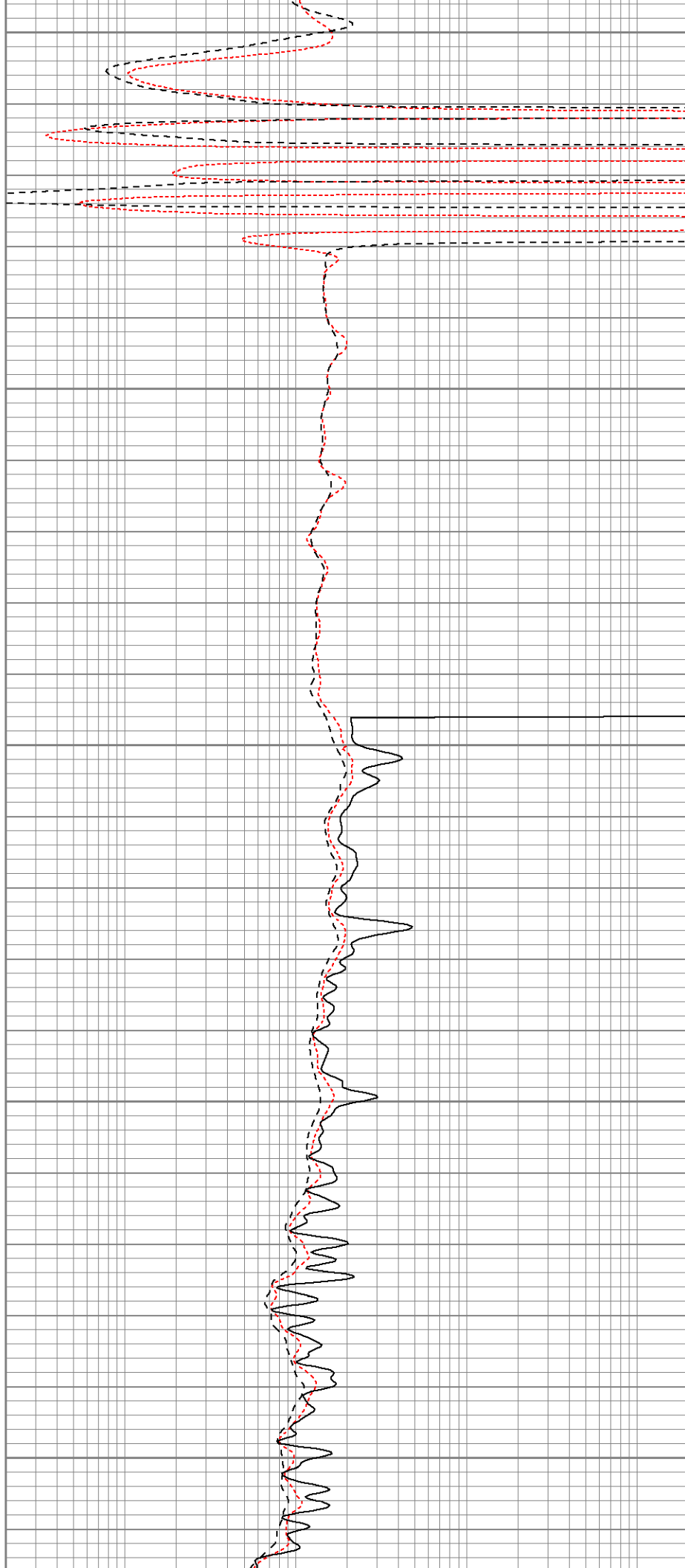
2250

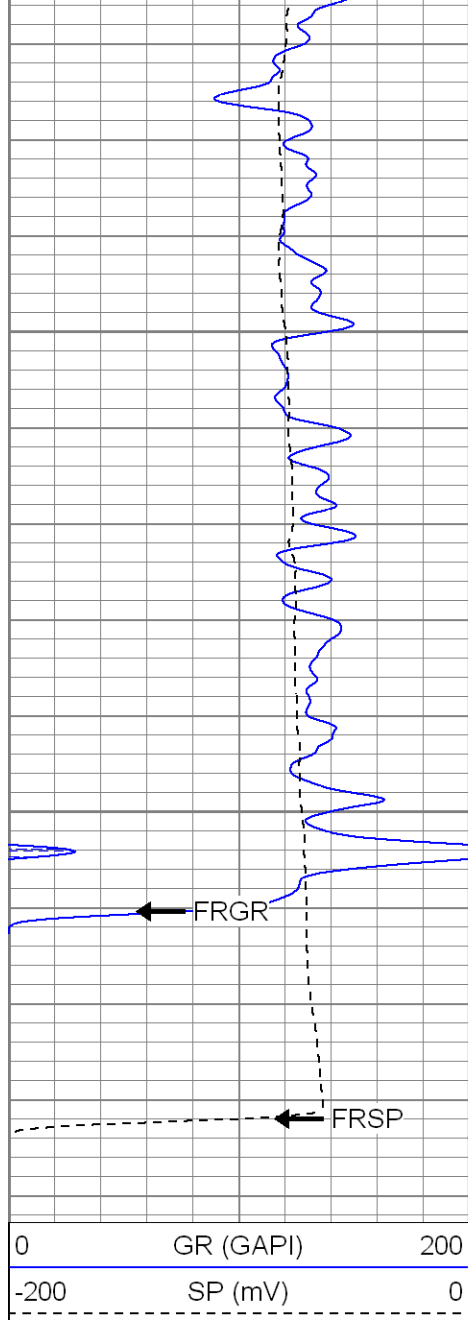
Fluid Level

2300

2350

2400



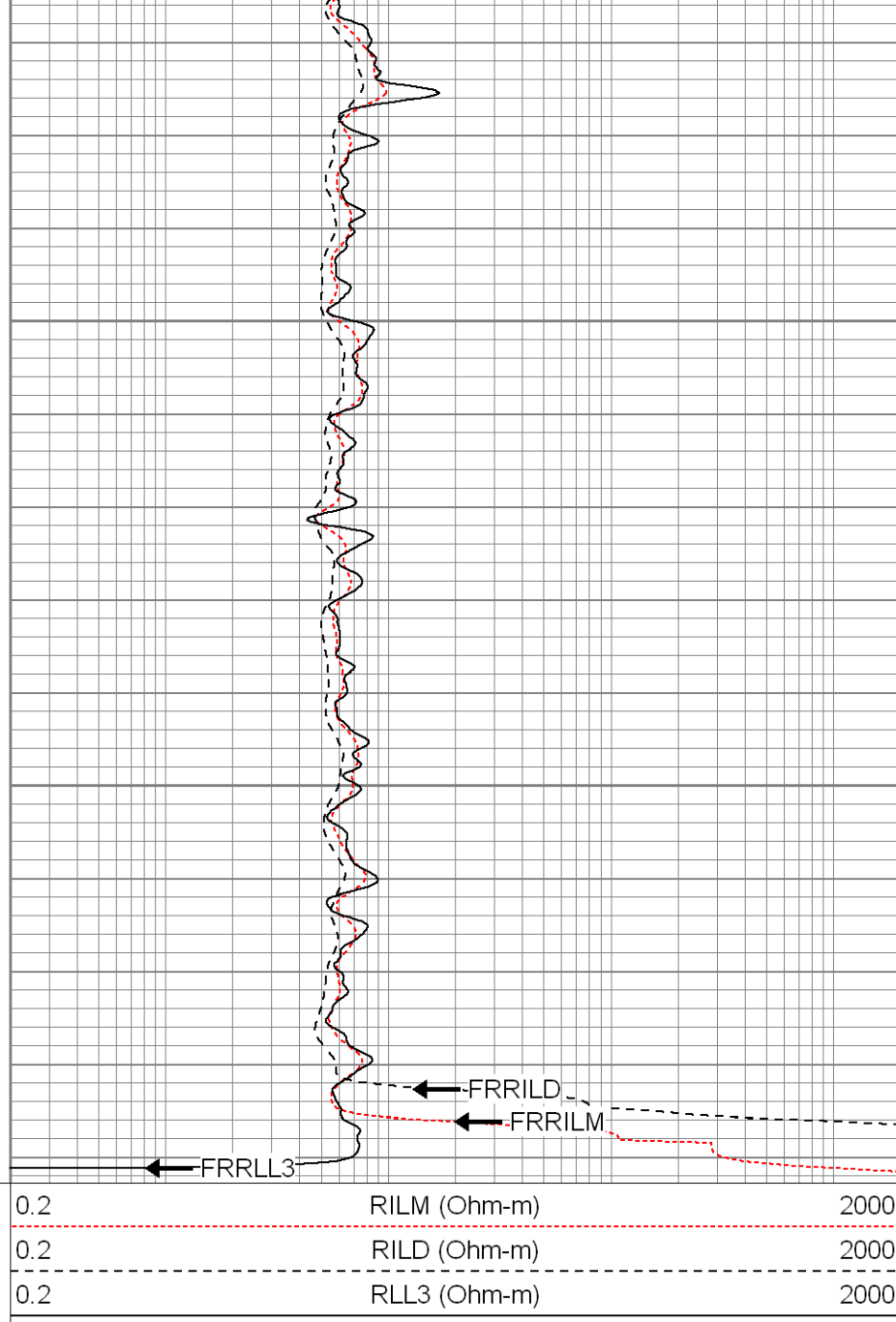


2450

2500

FRGR

FRSP



FRRILD

FRRILM

FRLL3



SUPERIOR

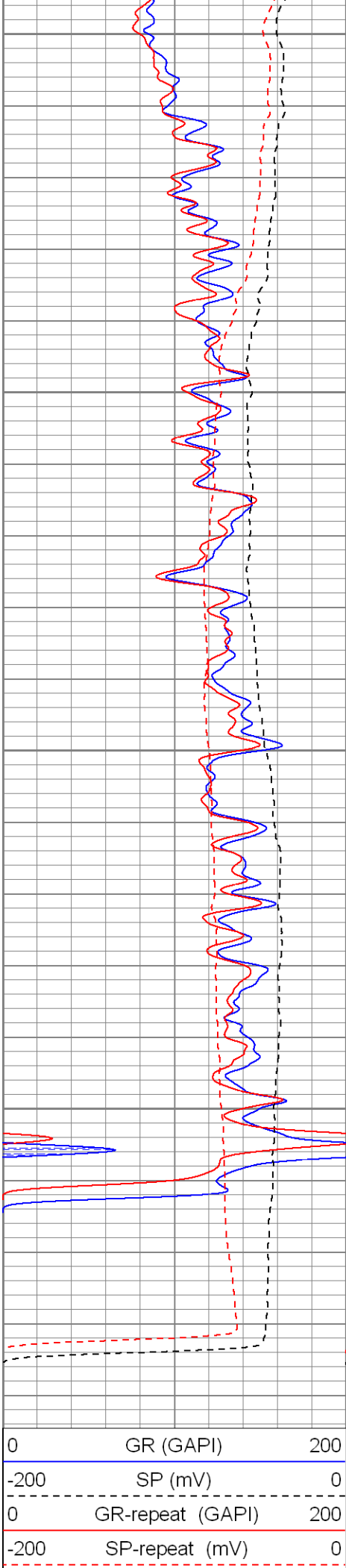
Black Lick, Pa.
Mercer, Pa.
Wooster, Oh.
Cleveland, Ok.
Trinidad, Co.

Repeat Pass

Database File: xtohre2307.db
Dataset Pathname: pass1.1
Presentation Format: dil
Dataset Creation: Tue Apr 15 21:08:33 2008 by Calc Open-Cased 070814
Charted by: Depth in Feet scaled 1:240

0	GR (GAPI)	200
-200	SP (mV)	0
0	GR-repeat (GAPI)	200
-200	SP-repeat (mV)	0

0.2	RILM (Ohm-m)	2000
0.2	RILD (Ohm-m)	2000
0.2	RLL3 (Ohm-m)	2000
0.2	RLL3-repeat (Ohm-m)	2000
0.2	RILM-repeat (Ohm-m)	2000
0.2	RILD-repeat (Ohm-m)	2000



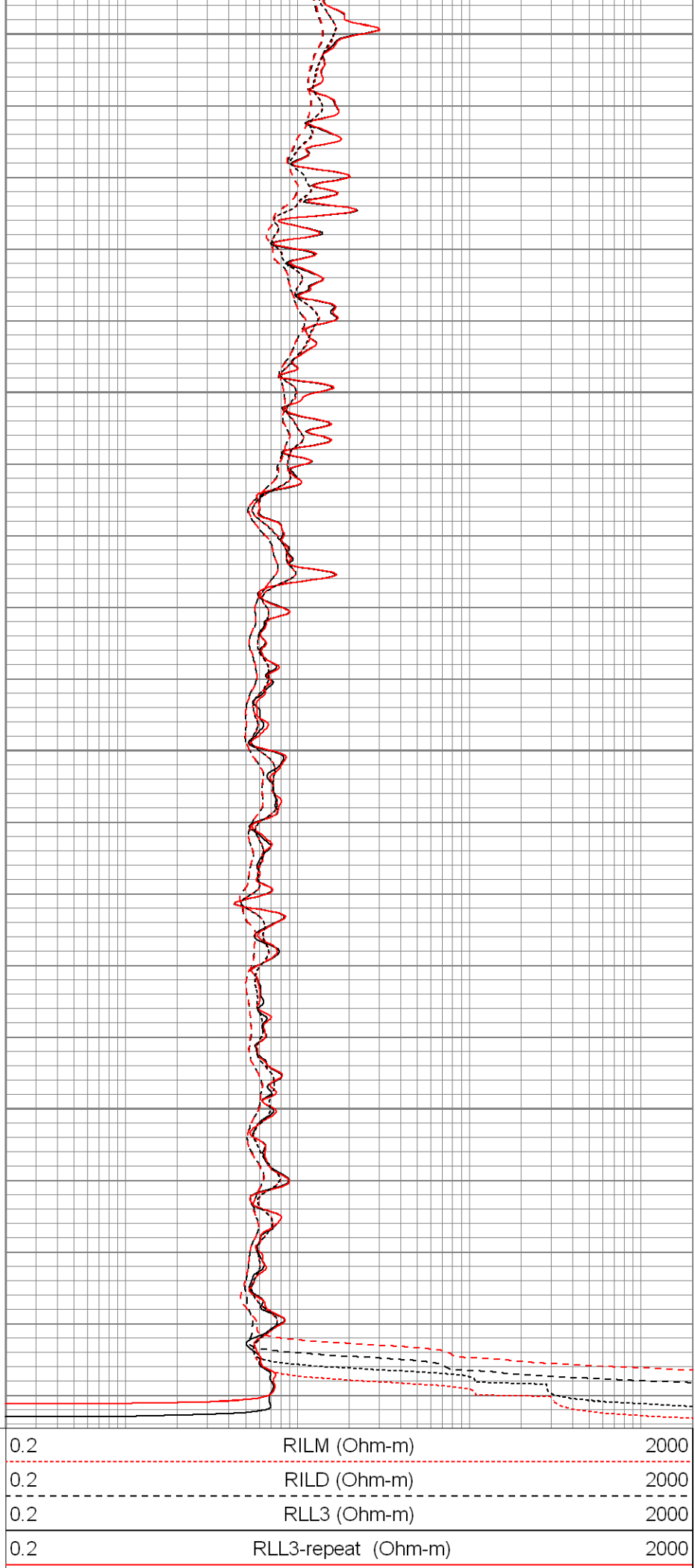
2350

2400

2450

2500

0	GR (GAPI)	200
-200	SP (mV)	0
0	GR-repeat (GAPI)	200
-200	SP-repeat (mV)	0



0.2	RILM (Ohm-m)	2000
0.2	RILD (Ohm-m)	2000
0.2	RLL3 (Ohm-m)	2000
0.2	RLL3-repeat (Ohm-m)	2000

	0.2	RILM-repeat (Ohm-m)	2000
	0.2	RILD-repeat (Ohm-m)	2000

Calibration Report			
Database File:	xtohre2307.db		
Dataset Pathname:	pass1		
Dataset Creation:	Tue Apr 15 20:35:18 2008 by Log Open-Cased 070814		

Dual Induction Calibration Report			
-----------------------------------	--	--	--

Serial-Model:	5375-G
Surface Cal Performed:	Tue Apr 01 11:00:37 2008
Downhole Cal Performed:	Tue Apr 01 11:01:24 2008

Surface Calibration								
Readings				References			Results	
Loop:	Air	Loop		Air	Loop		m	b
Deep	0.001	0.620	V	0.000	500.000	mmho-m	807.237	-0.611
Medium	0.003	0.742	V	0.000	550.000	mmho-m	743.848	-2.179
Internal:	Zero	Cal		Zero	Cal		m	b
Deep	0.001	0.620	V	0.000	500.000	mmho-m	807.141	-0.502
Medium	0.003	0.742	V	0.000	550.000	mmho-m	743.959	-2.189

Downhole Calibration								
Readings				References			Results	
Internal:	Zero	Cal		Zero	Cal		m	b
Deep	-0.493	500.241	mmho-m	-0.108	499.951	mmho-m	0.999	0.384
Medium	0.182	550.341	mmho-m	0.009	549.927	mmho-m	1.000	-0.172
Shallow	2.506	0.008	V	500.000	2.000	Ohm-m	124.000	-3.000

Temperature Calibration Report			
--------------------------------	--	--	--

Serial Number:	2542T			
Tool Model:	CDLP			
Performed:	Wed Apr 09 15:14:20 2008			
	Reference		Reading	
Low Reference:	55.00	degF	3.11	V
High Reference:	160.00	degF	5.35	V
Gain:	46.88			
Offset:	-90.78			
Delta Spacing	1			

Compensated Density Calibration Report			
--	--	--	--

Serial-Model:	2542-T2
Source / Verifier:	/
Master Calibration Performed:	Fri Apr 04 08:43:29 2008

Master Calibration					
	Density		Far Detector	Near Detector	
Magnesium	1.710	g/cc	725.64	339.44	cps
Aluminum	2.590	g/cc	162.65	232.88	cps

Spine Angle = 75.86

Density/Spine Ratio = 0.571

	Size		Reading	
Small Ring	8.00	in	1.33	V
Large Ring	14.00	in	2.67	V

Gamma Ray Calibration Report

Serial Number: 2001
 Tool Model: OH
 Performed: Fri Apr 04 09:53:13 2008

 Calibrator Value: 1.0 GAPI

 Background Reading: 0.0 cps
 Calibrator Reading: 1.0 cps

 Sensitivity: 0.2500 GAPI/cps


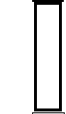

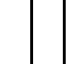
Neutron Calibration Report

Serial Number: 5108
 Tool Model: PROBE
 Performed: Wed Apr 09 15:10:14 2008

 Calibrator Value: 1 NAPI

 Calibrator Reading: 1 cps

 Sensitivity: 1 NAPI/cps

Sensor	Offset (ft)	Schematic	Description	Len (ft)	OD (in)	Wt (lb)
NEU	37.47		None	0.75	1.50	5.00
			NEU-PROBE (5108) Probe Epithermal	4.92	3.63	85.00
GR	31.94		GR-OH (2001) 2001	3.56	3.25	40.00
			CDL-T2 (2542) Gearhart	9.29	4.00	201.00
LSD	23.19		TEMP-CDLP (2542T) Probe Density/Temp	0.01	10.00	1.00
DCAL	22.98					
SSD	22.73					
TEMP	22.55					
CILD SP	10.60 10.60		DIL-G (5375) Gearhart	21.47	4.00	345.00

