



SUPERIOR
WELL SERVICES
Black Lick, Pa.
Mercer, Pa.
Wooster, Oh.
Cleveland, Ok.
Trinidad, Co.

CEMENT BOND GAMMA RAY 1000 PSI

Company XTO Energy Inc.

Well New Elk 36-05

Field Purgatorie River

County Las Animas

State CO

Company XTO Energy Inc.

Well New Elk 36-05

Field Purgatorie River

County Las Animas

State CO

Location:

API # : 05 071 09236 00

2345' FNL & 822' FWL

SEC 36 TWP 33S RGE 68W

Other Services
PRES
CONTROL

Permanent Datum Ground Level Elevation 8199'
Log Measured From Ground Level
Drilling Measured From Ground Level

Elevation

K.B. -----
D.F. -----
G.L. 8199'

Date

2/19/08

Run Number

one

Depth Driller

2415'

Depth Logger

2320'

Bottom Logged Interval

2316'

Top Log Interval

Surf.

Open Hole Size

7 7/8"

Type Fluid

water

Density / Viscosity

///

Max. Recorded Temp.

132F

Estimated Cement Top

294'

Time Well Ready

2:30

Time Logger on Bottom

2:40

Equipment Number

0703

Location

Trinidad

Recorded By

Worley

Witnessed By

Mr. Valdez

Run Number

Bit

From

To

Size

Weight

From

To

Casing Record

Size

Wgt/Ft

Top

Bottom

Surface String

8 5/8"

00

450'

Prot. String

5 1/2"

00

NA

Production String

5 1/2"

00

NA

Liner

5 1/2"

00

NA

Size

Wgt/Ft

Top

Bottom

Surface String

8 5/8"

00

450'

Prot. String

5 1/2"

00

NA

Production String

5 1/2"

00

NA

Liner

5 1/2"

00

NA

<<< Fold Here >>>

All interpretations are opinions based on inferences from electrical or other measurements and we cannot and do not guarantee the accuracy or correctness of any interpretation, and we shall not, except in the case of gross or willful negligence on our part, be liable or responsible for any loss, costs, damages, or expenses incurred or sustained by anyone resulting from any interpretation made by any of our officers, agents or employees. These interpretations are also subject to our general terms and conditions set out in our current Price Schedule.

Comments

Second bosque entrance, across tracks, stay left at Y
to Cuerela Canyon, thru green gate, take first right,
location is seventh drive thru location.

CBL ran under 1000 PSI.



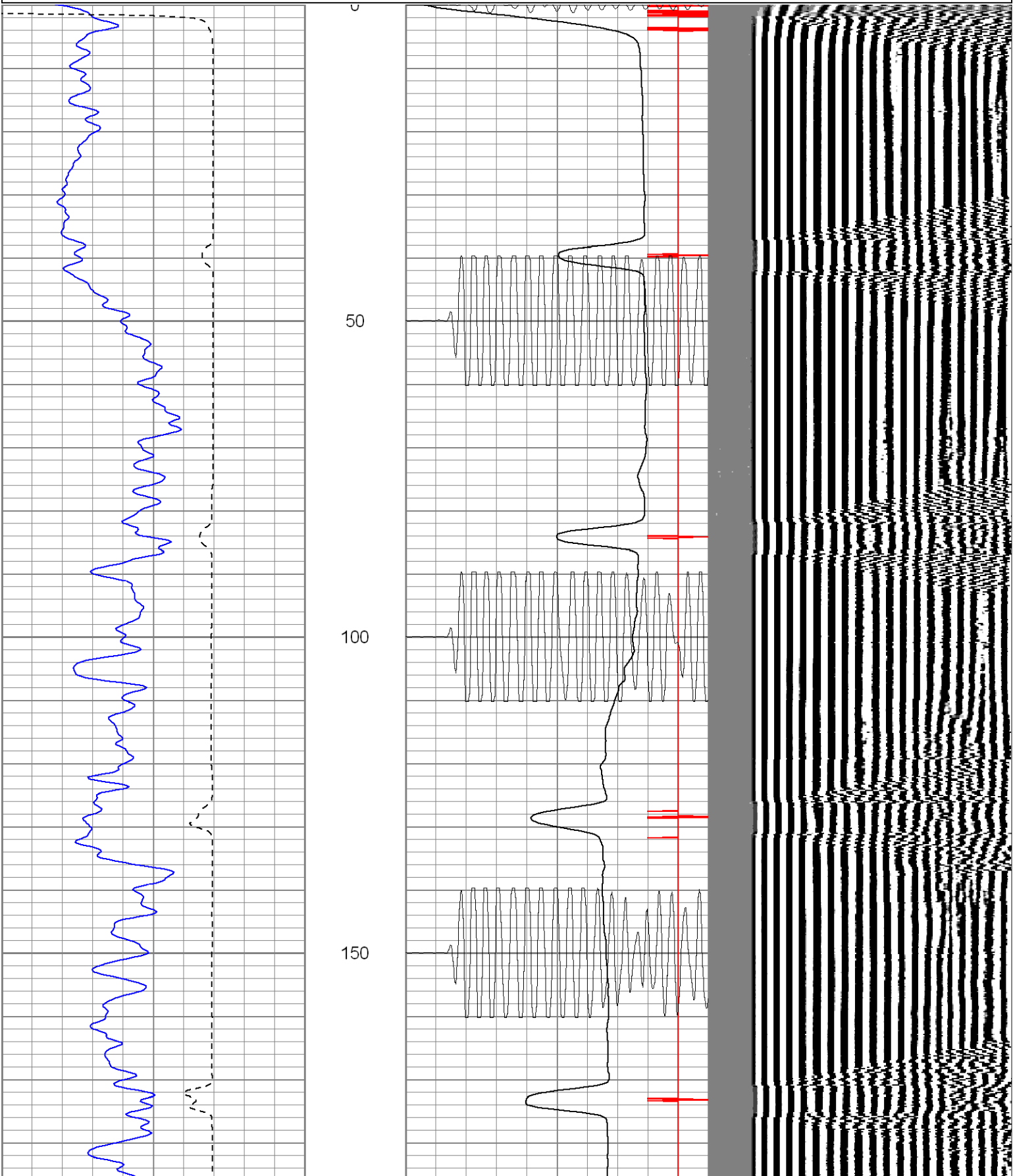
SUPERIOR

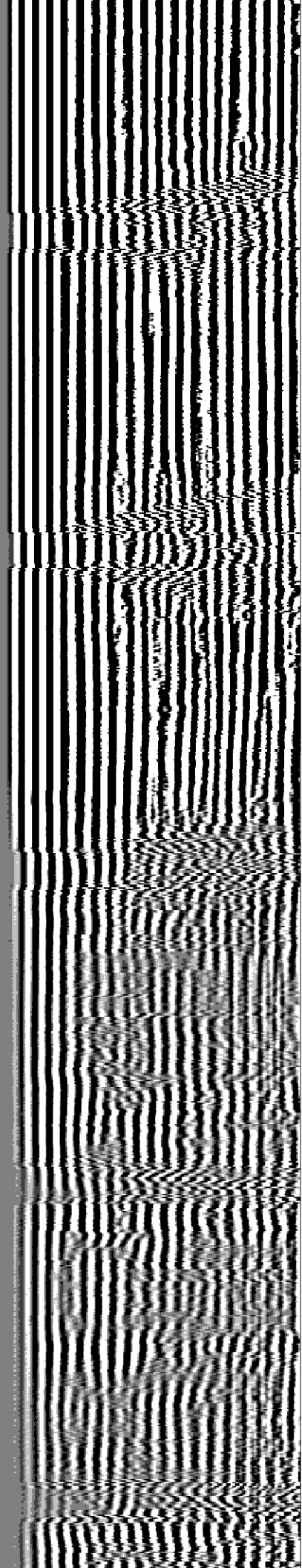
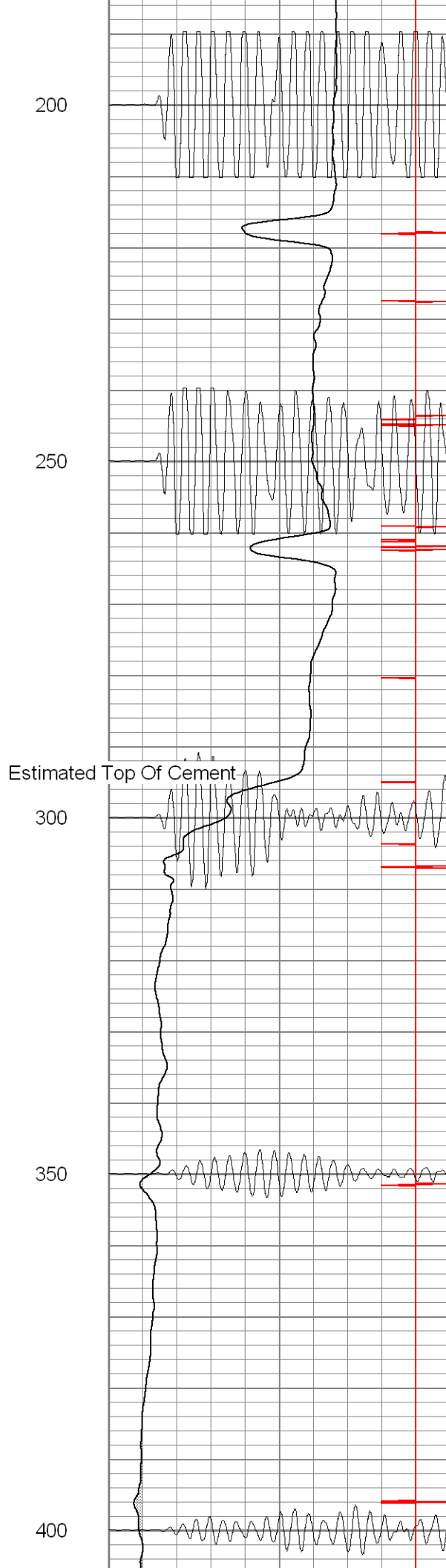
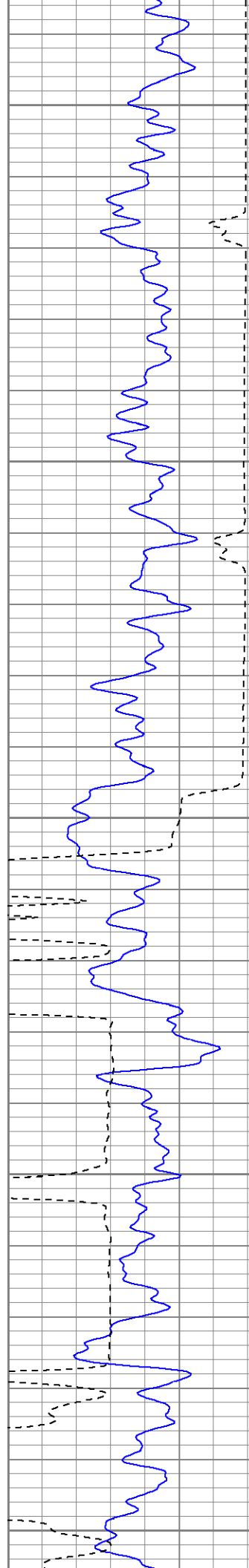
Black Lick, Pa.
Mercer, Pa.
Wooster, Oh.
Cleveland, Ok.
Trinidad, Co.

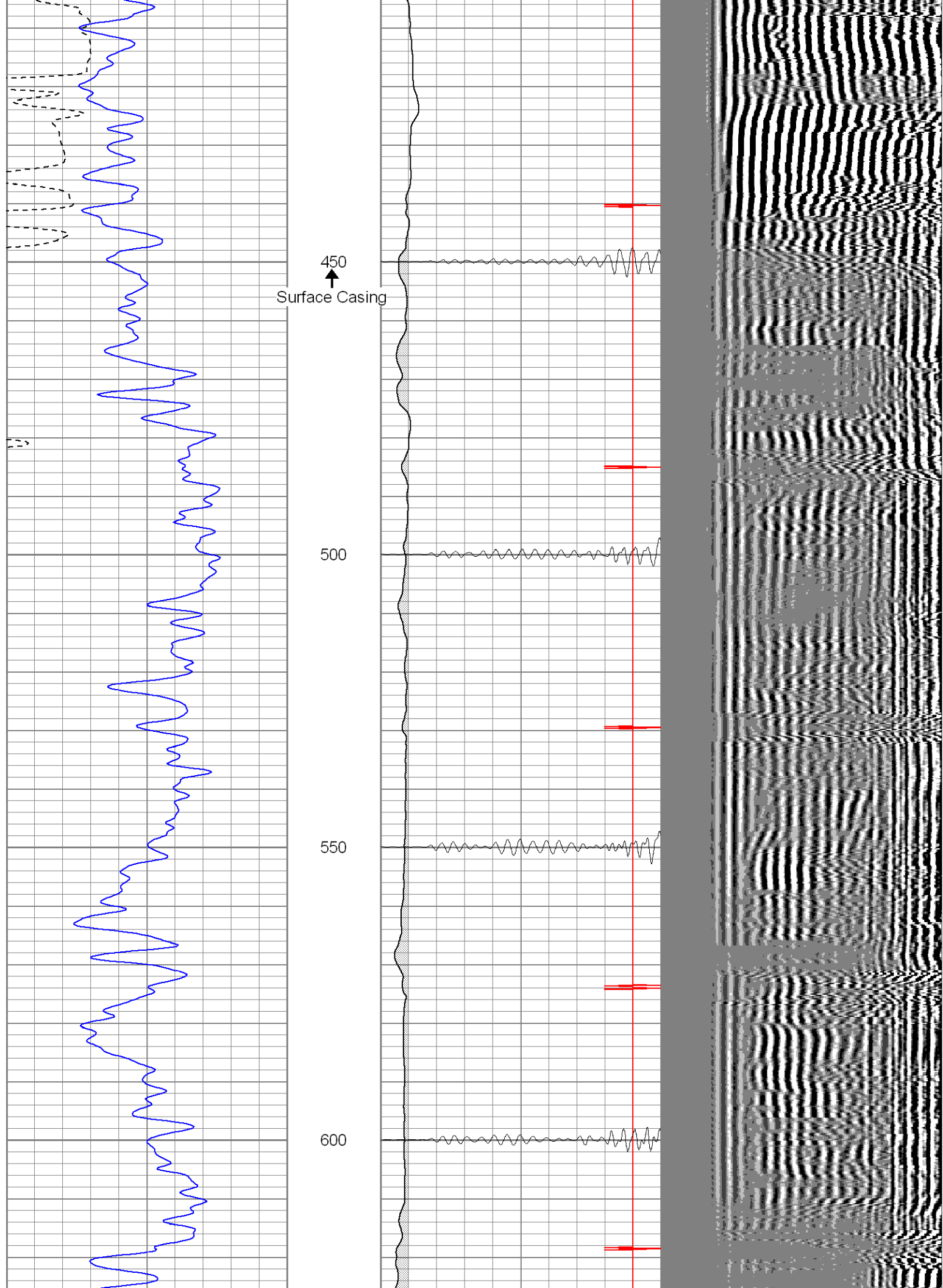
Main Pass 1000 PSI

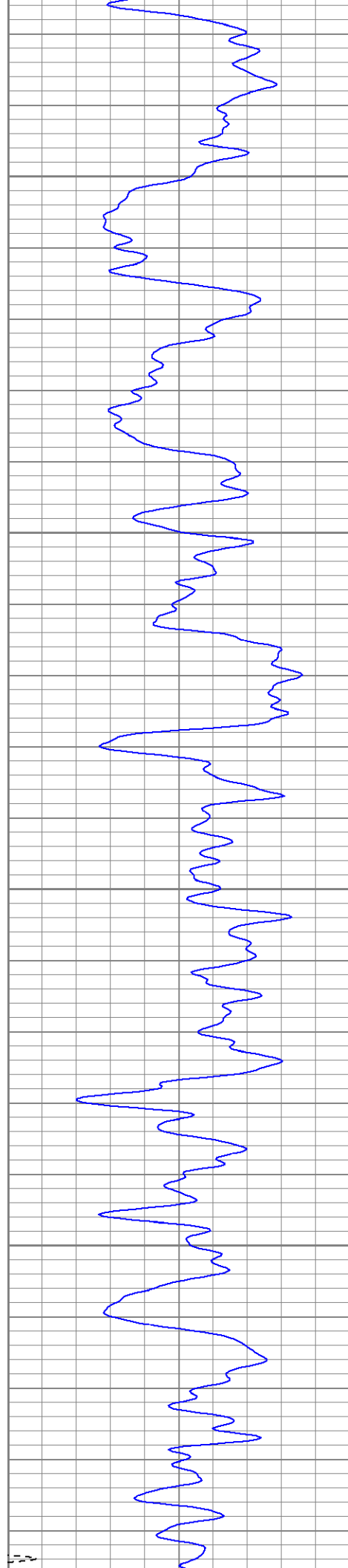
Database File: ne36-05b21908.db
Dataset Pathname: pass2.1
Presentation Format: cblrt
Dataset Creation: Tue Feb 19 16:05:00 2008 by Calc Open-Cased 071220
Charted by: Depth in Feet scaled 1:240

0	GR (GAPI)	200	0	AMP3 (mV)	100	200	CBL5	1200
400	TT3 (usec)	200	18	CCL	-2			
			200	CBL5	1200			







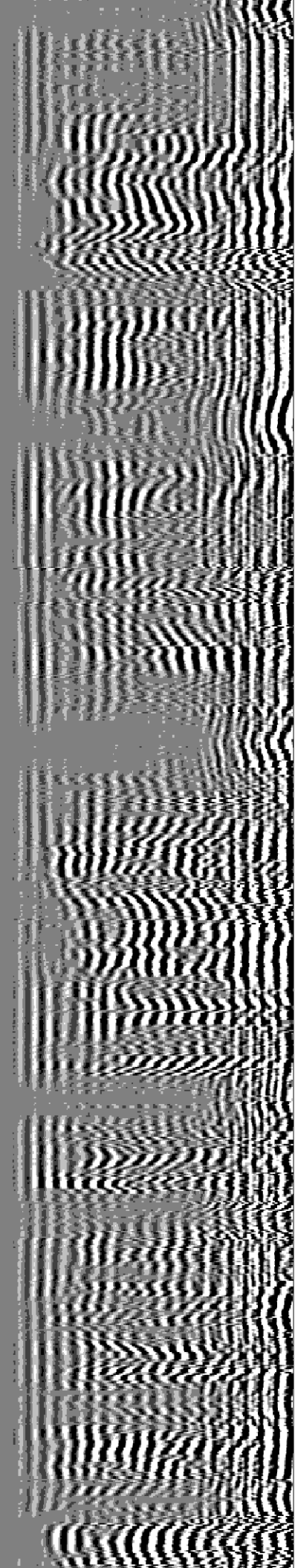


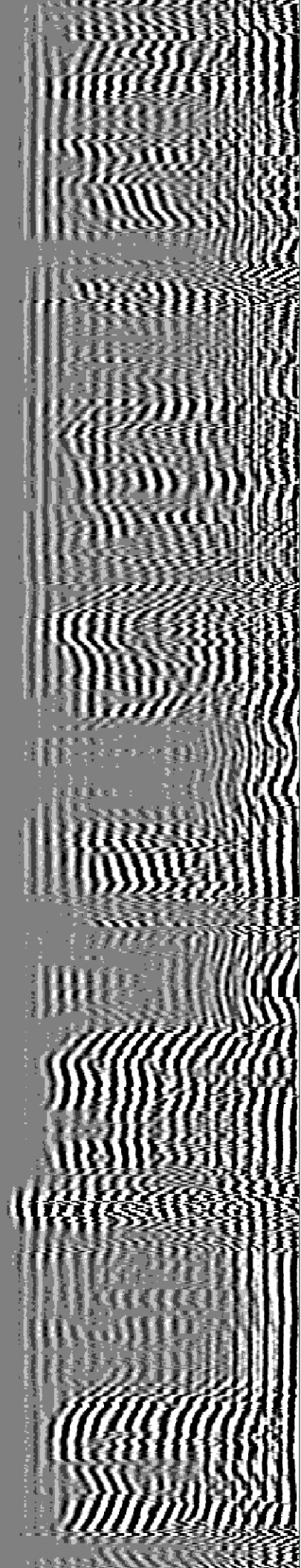
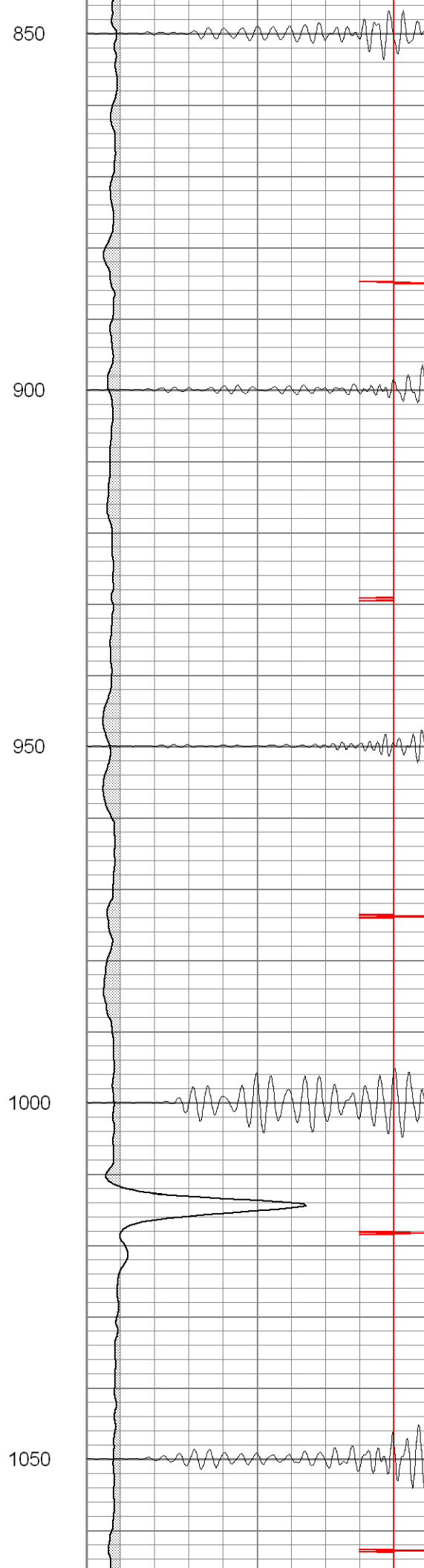
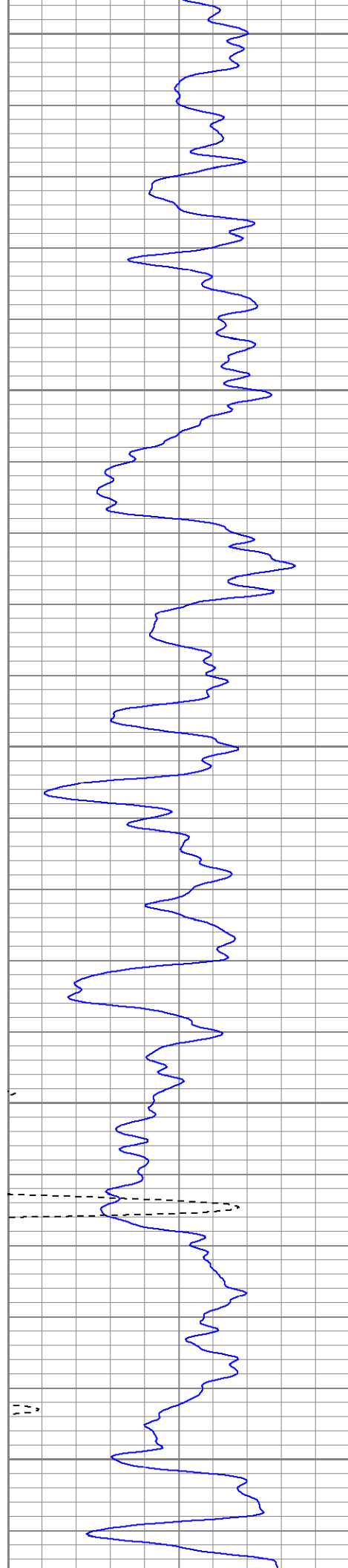
650

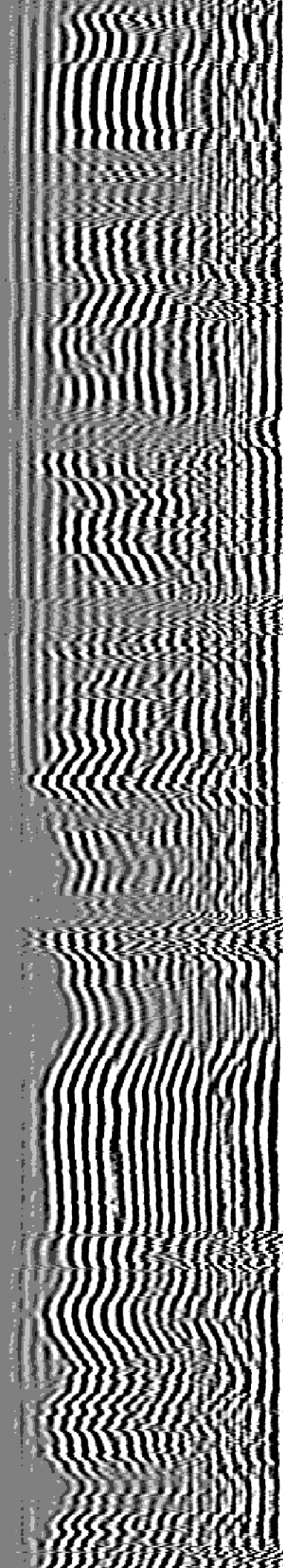
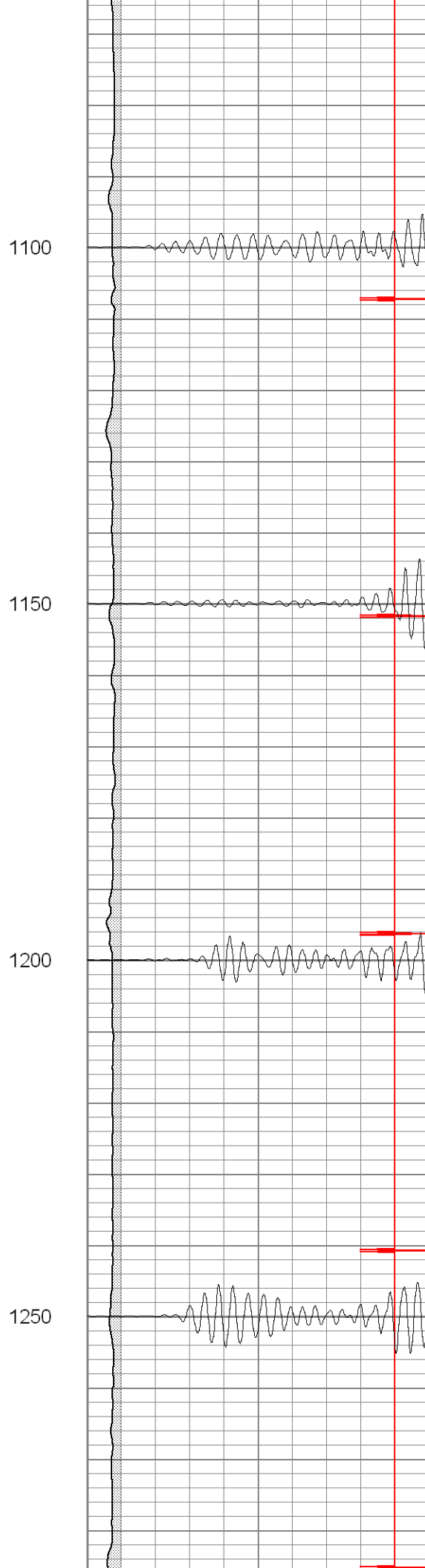
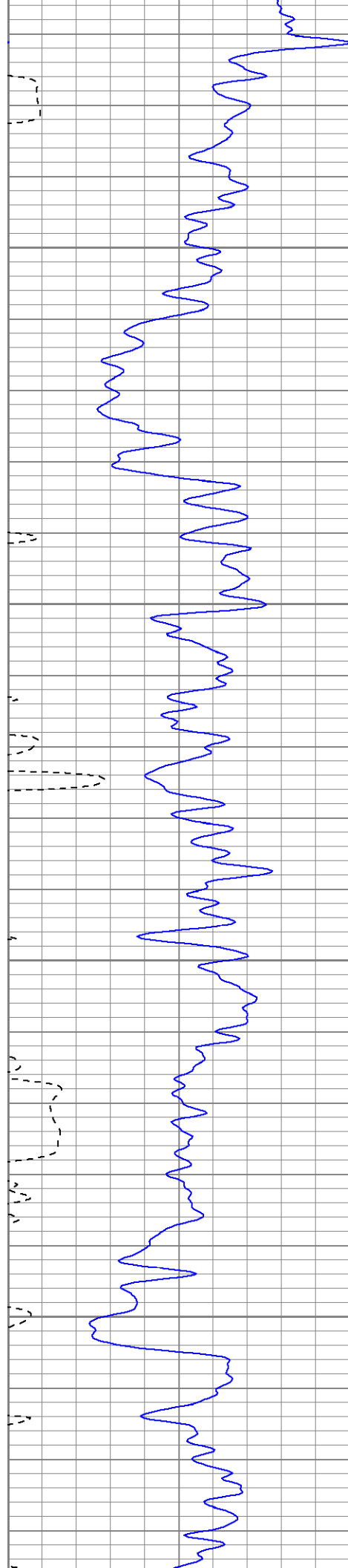
700

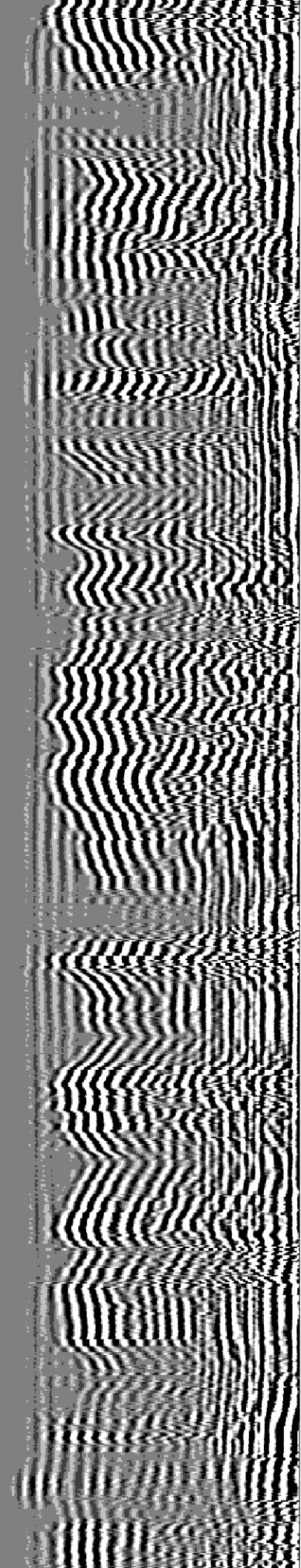
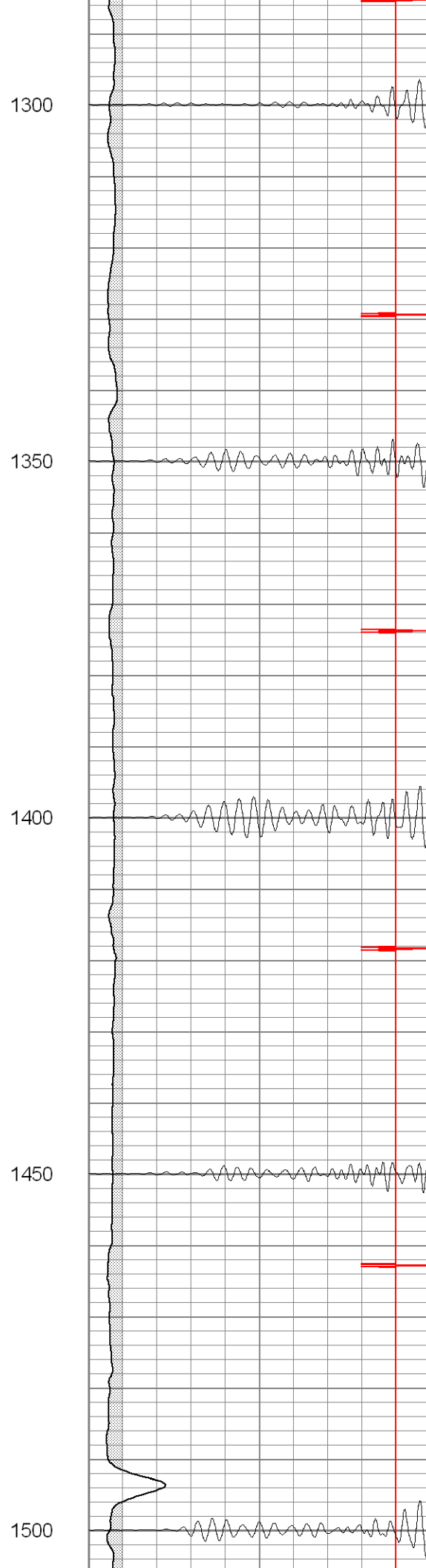
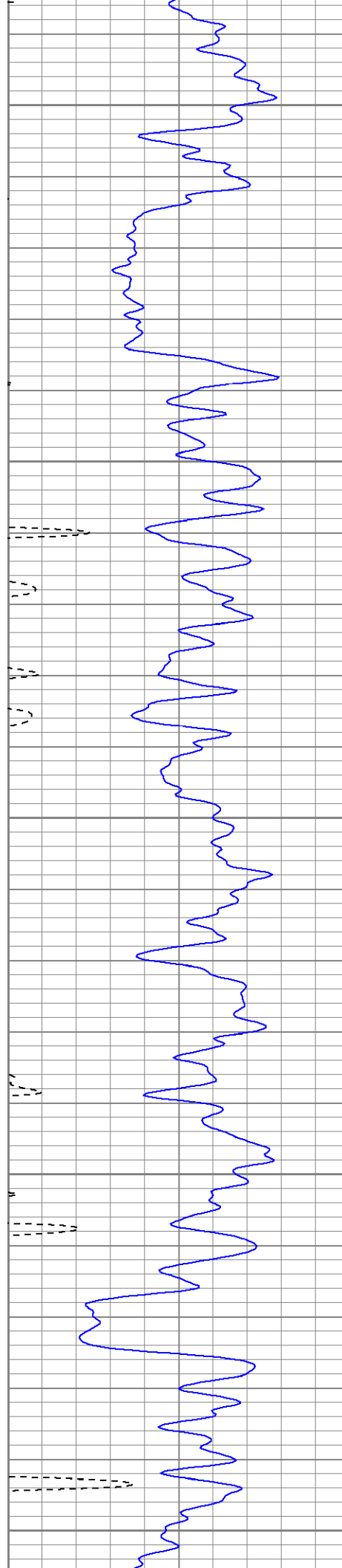
750

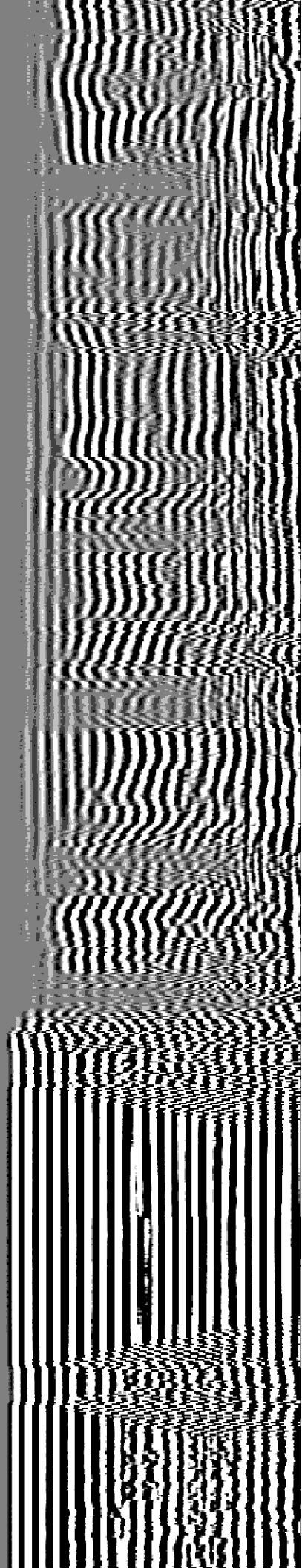
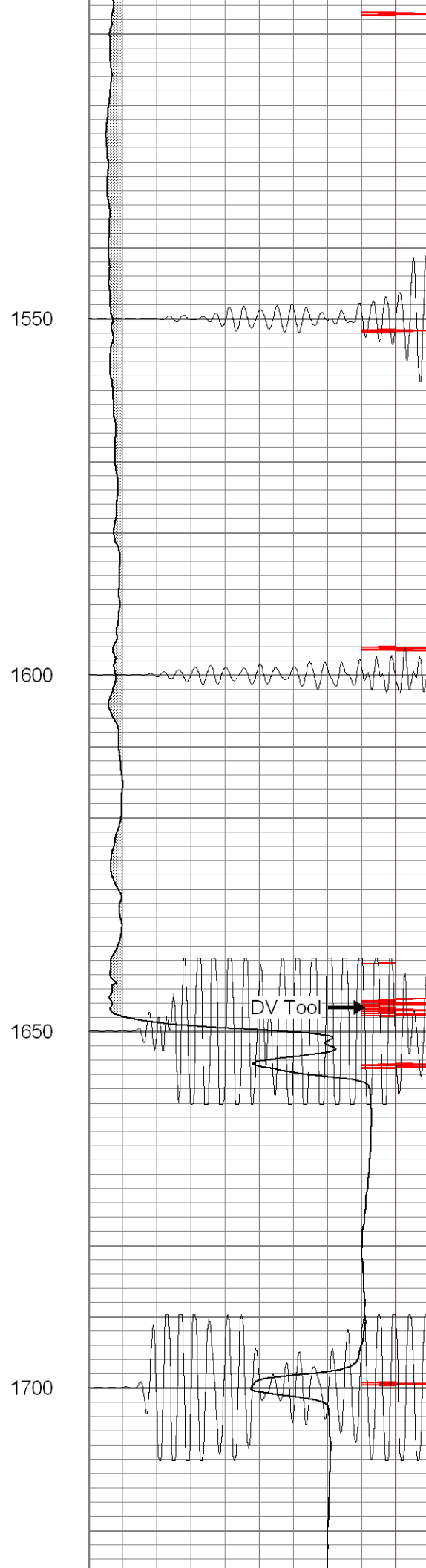
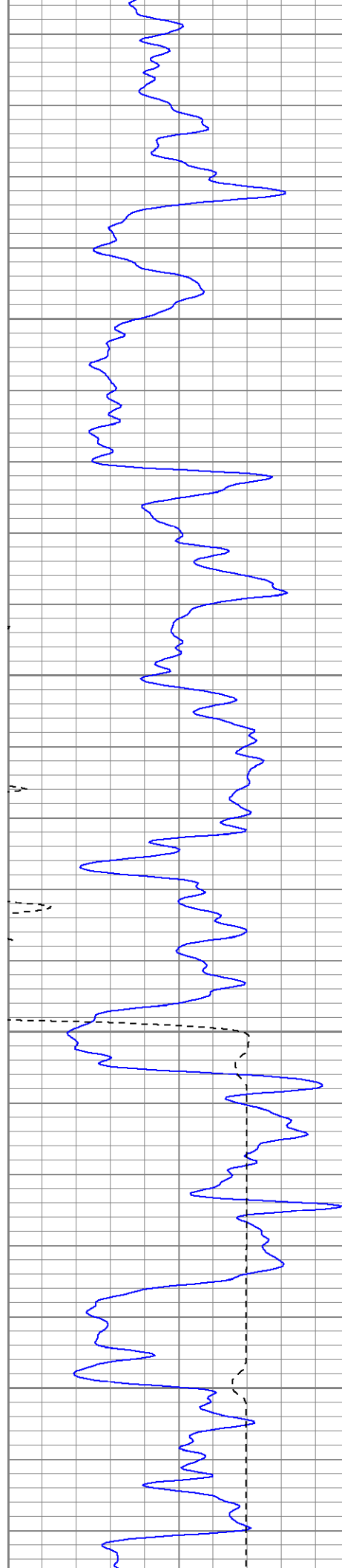
800

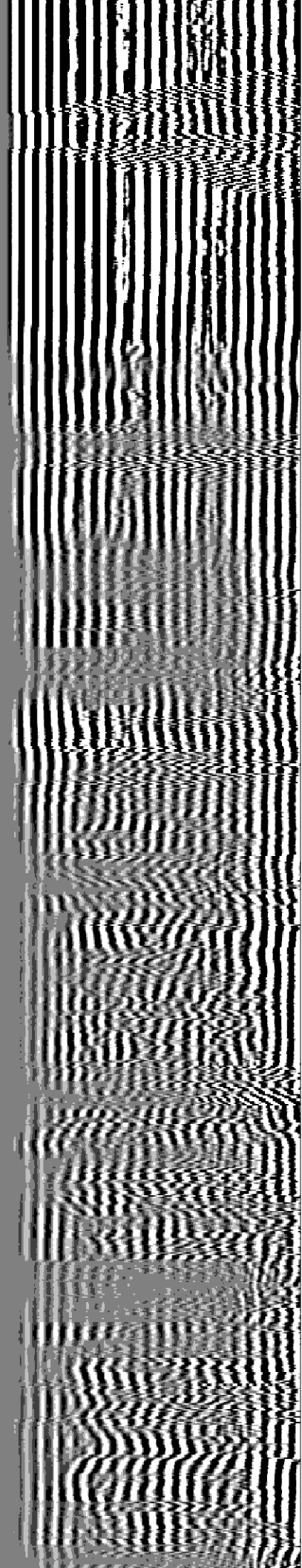
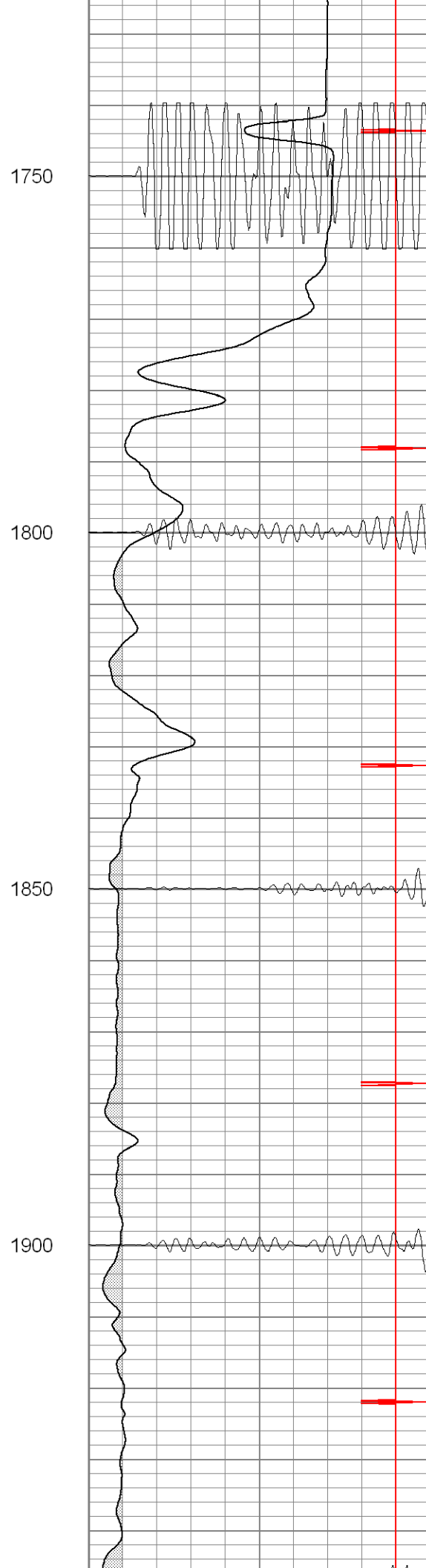
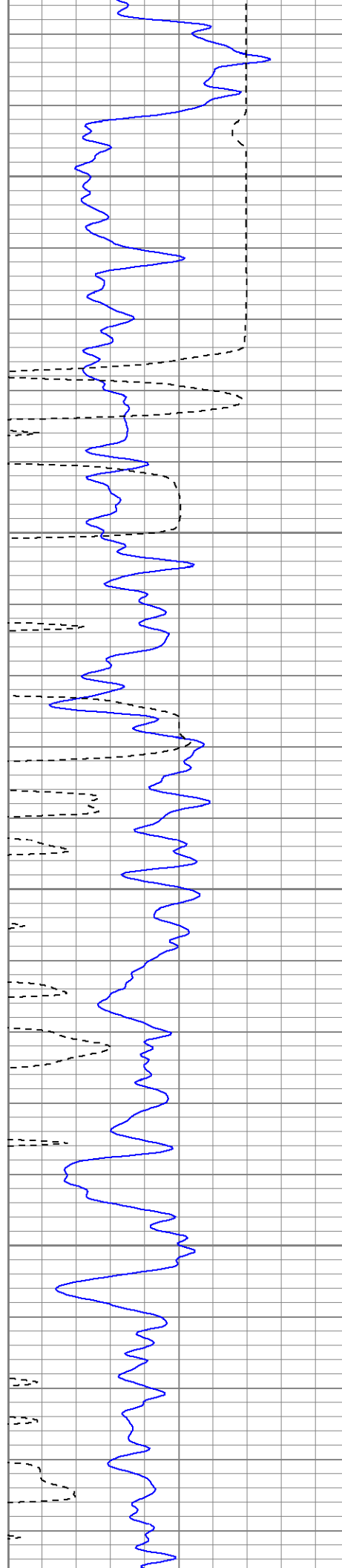


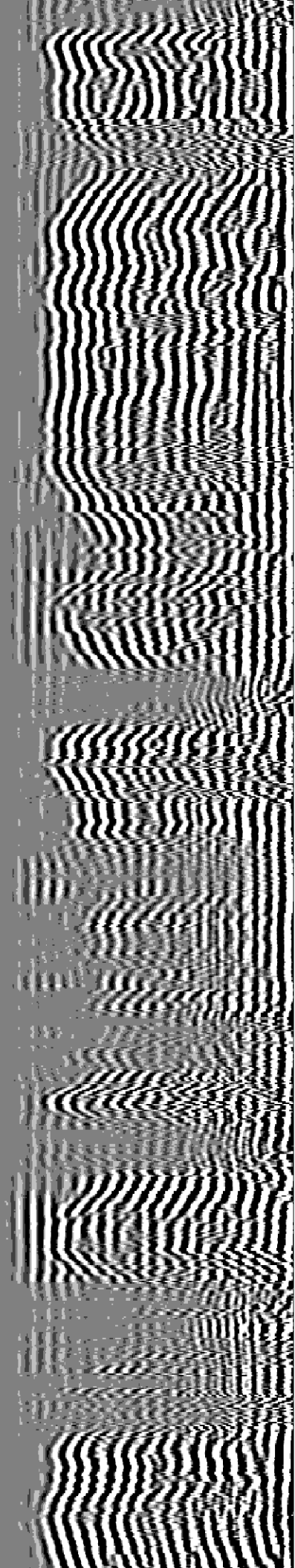
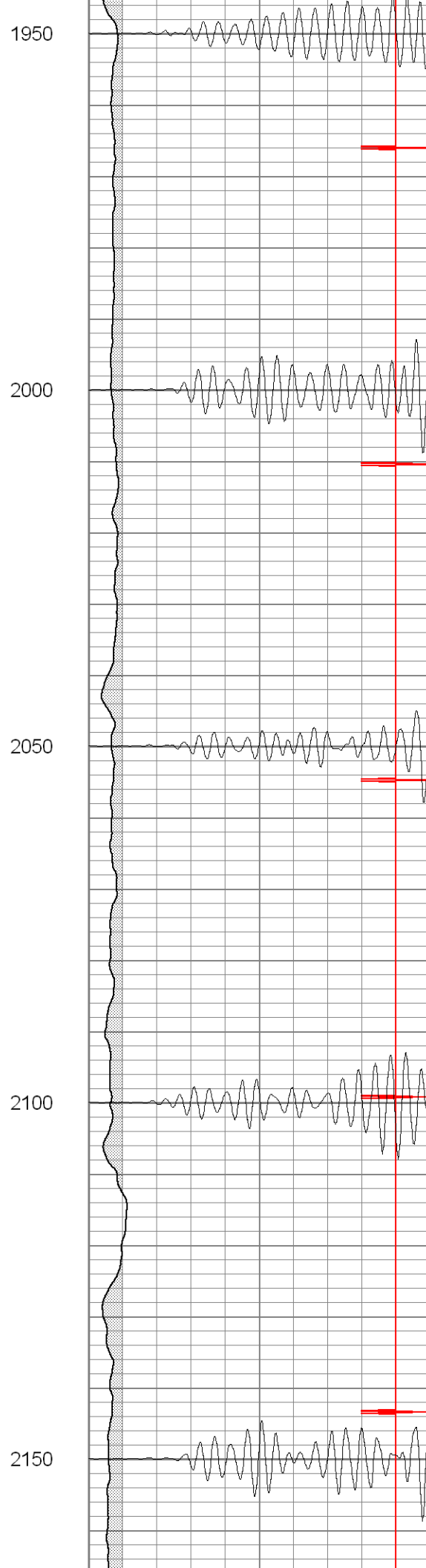
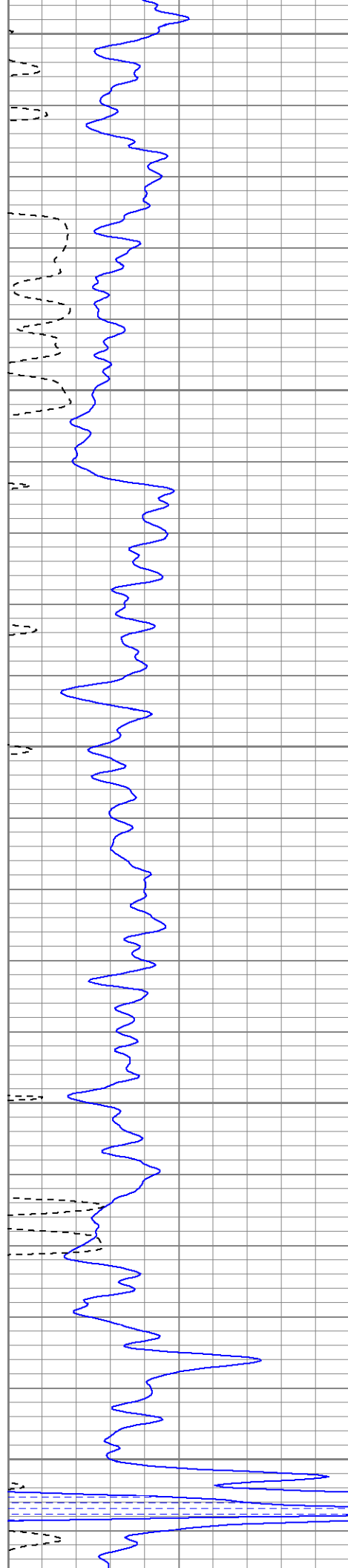


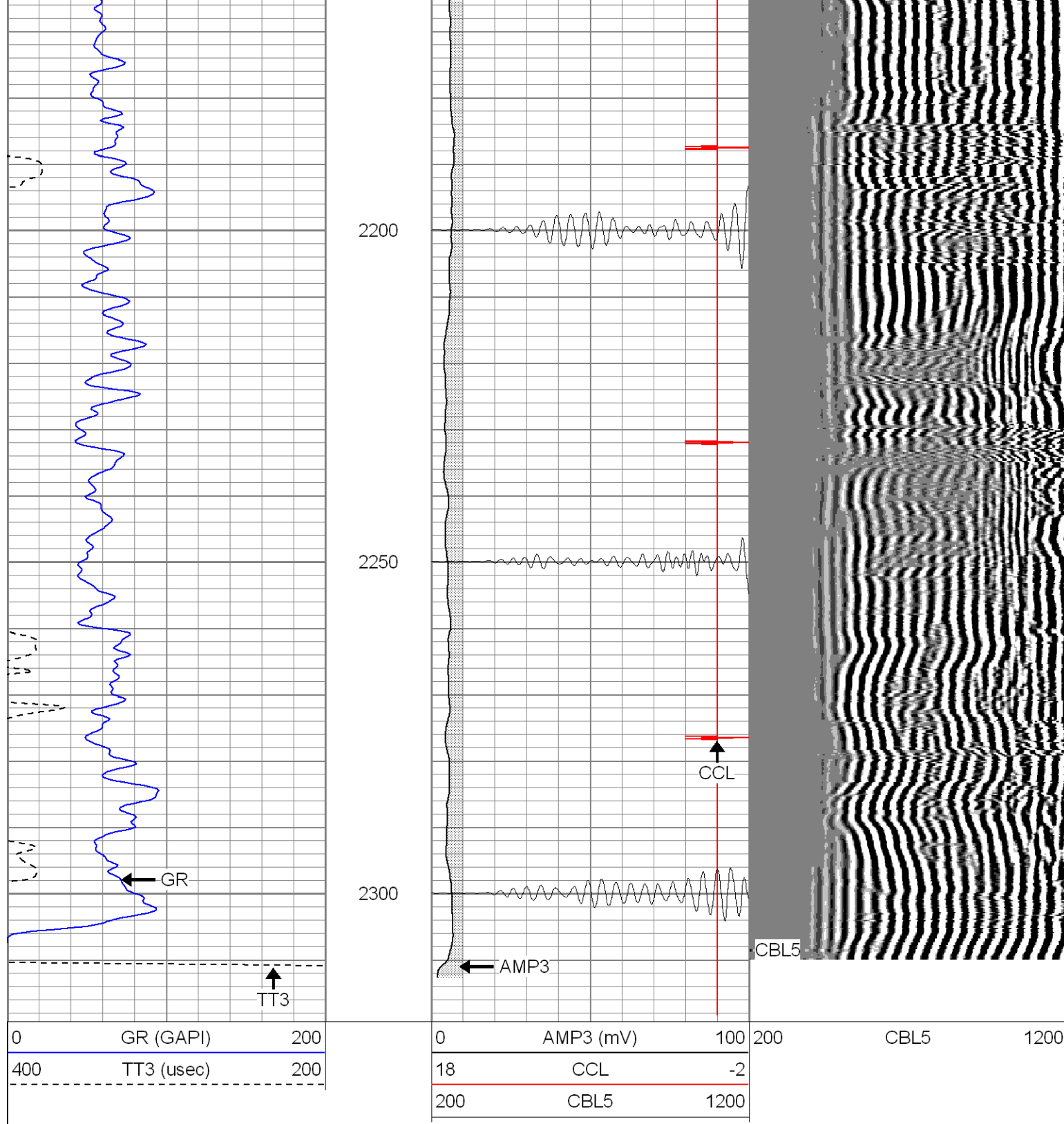












SUPERIOR

Black Lick, Pa.
Mercer, Pa.
Wooster, Oh.
Cleveland, Ok.
Trinidad, Co.

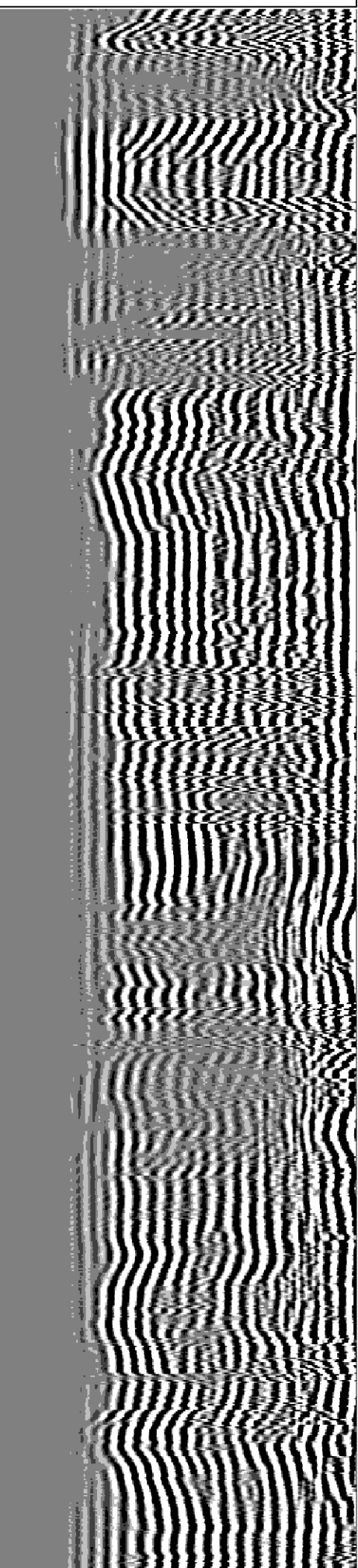
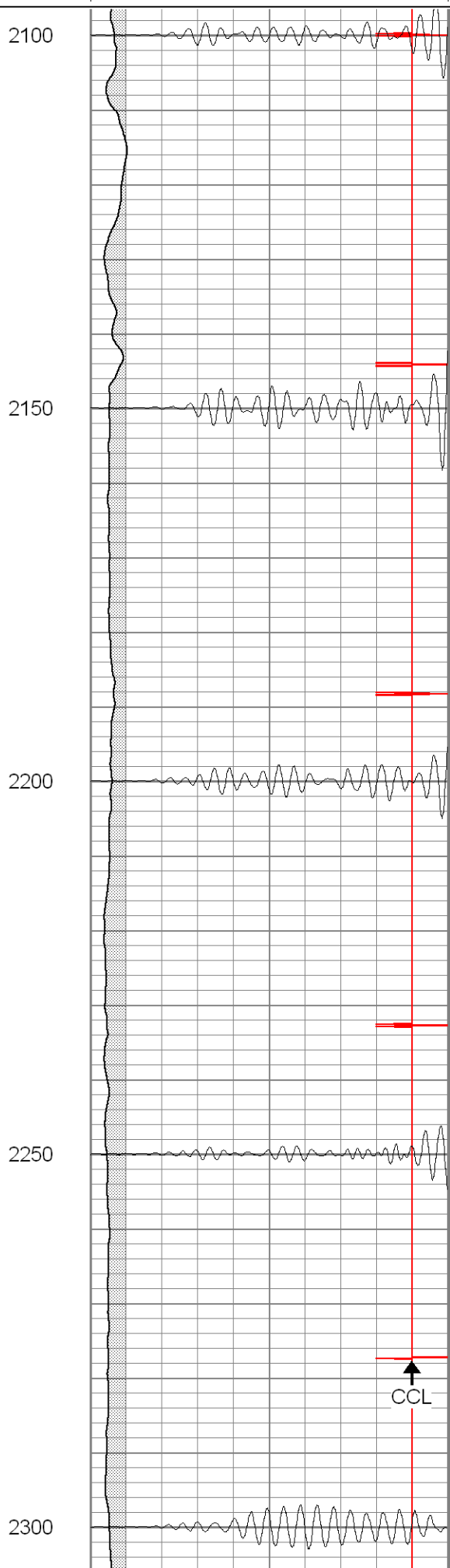
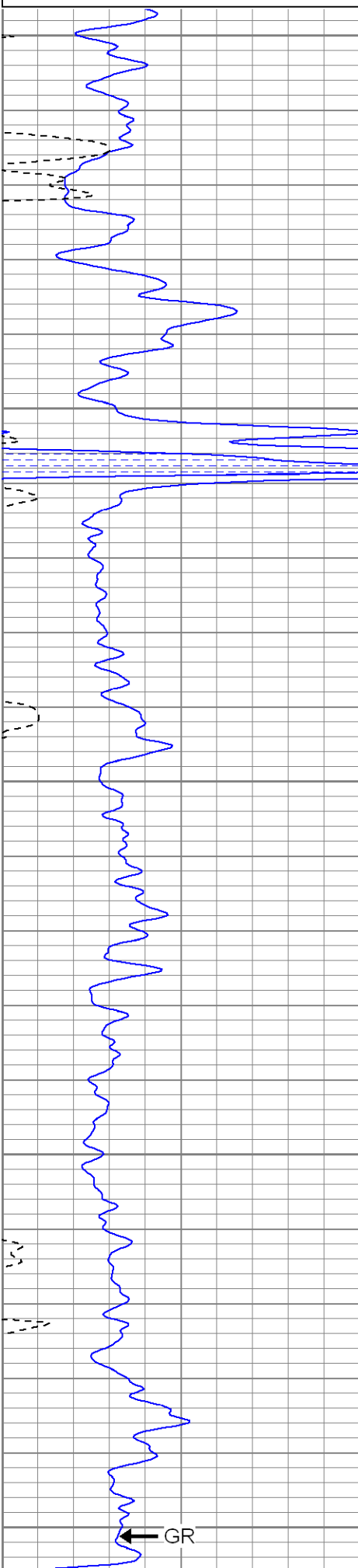
Repeat Section 0 PSI

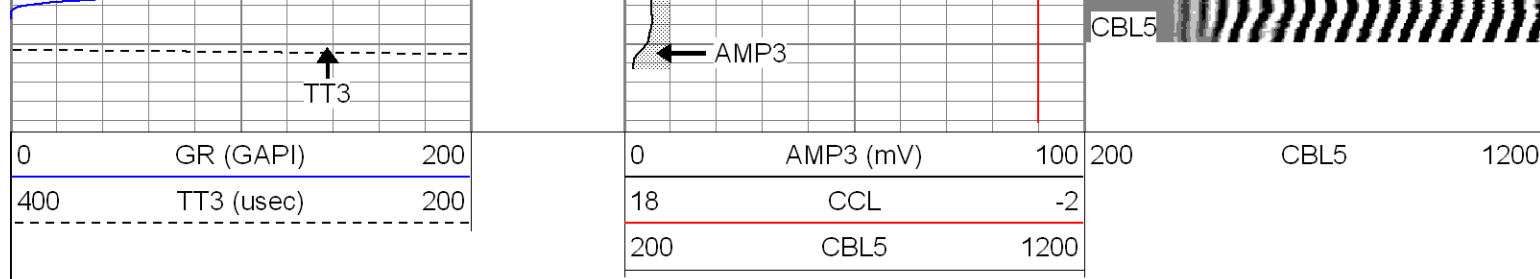
Database File: ne36-05b21908.db
Dataset Pathname: pass1.1
Presentation Format: cblrt
Dataset Creation: Tue Feb 19 16:09:03 2008 by Calc Open-Cased 071220
Charted by: Depth in Feet scaled 1:240



400 TT3 (usec) 200

18	CCL	-2
200	CBL5	1200





Calibration Report

Database File: ne36-05b21908.db
 Dataset Pathname: pass1.1
 Dataset Creation: Tue Feb 19 16:09:03 2008 by Calc Open-Cased 071220

Cement Bond Log Calibration Report

Serial Number: Titan5
 Tool Model: T5
 Performed: Tue Feb 19 14:34:11 2008

Depth: 0 ft
 Casing Diameter: 0 in

3' Spacing 5' Spacing

Signal Zero: 0 0 mV
 Calibrated Amplitude: 85 85 mV
 Reading at Signal Zero: -0.04 0.0081543 V
 Reading in Free Pipe: 1.6 2.4 V

Gain: 51.8293 35.5374
 Offset: 2.07317 -0.289783

Gamma Ray Calibration Report

Serial Number: Titan5
 Tool Model: T2
 Performed: Tue Feb 19 13:08:36 2008

Calibrator Value: 1.0 GAPI

Background Reading: 0.0 cps
 Calibrator Reading: 1.0 cps

Sensitivity: 1.0000 GAPI/cps