



SUPERIOR
Black Lick, Pa.
Mercer, Pa.
Wooster, Oh.
Cleveland, Ok.
Trinidad, Co.

DUAL INDUCTION LOG

Company	XTO Energy Inc.		
Well	Apache Canyon 05-15		
Field	Purgatoire River		
County	Las Animas	State	Colorado
Location:	API # : 05 071 09130 00		Other Services CDL NEUTRON
SEC 5 TWP 34S RGE 67W			
Permanent Datum	Ground Level	Elevation	7872'
Log Measured From	Ground Level		
Drilling Measured From	Ground Level		
Date	2-18-08		
Run Number	One		
Depth Driller	2500'		
Depth Logger	2493'		
Bottom Logged Interval	2491'		
Top Log Interval	Surface Casing		
Casing Driller	8 5/8" @ 450'		
Casing Logger	450'		
Bit Size	7 7/8"		
Type Fluid in Hole	Water		
Density / Viscosity	///		
pH / Fluid Loss	///		
Source of Sample	///		
Rm @ Meas. Temp	///		
Rmf @ Meas. Temp	///		
Rmc @ Meas. Temp	///		
Source of Rmf / Rmc	///		
Rm @ BHT	///		
Time Circulation Stopped	11:00 A.M.		
Time Logger on Bottom	1:30 P.M.		
Maximum Recorded Temperature	110 DEG F		
Equipment Number	T697		
Location	Trinidad		
Recorded By	J. Cappellucci		
Witnessed By	Mr. Don Johnson		

<<< Fold Here >>>

All interpretations are opinions based on inferences from electrical or other measurements and we cannot and do not guarantee the accuracy or correctness of any interpretation, and we shall not, except in the case of gross or willful negligence on our part, be liable or responsible for any loss, costs, damages, or expenses incurred or sustained by anyone resulting from any interpretation made by any of our officers, agents or employees. These interpretations are also subject to our general terms and conditions set out in our current Price Schedule.

Comments

Well Directions:
1st Bosque Entrance to Cherry Canyon, Stay on main road,
all the way to top, at 4 way take left, road dead ends on location.



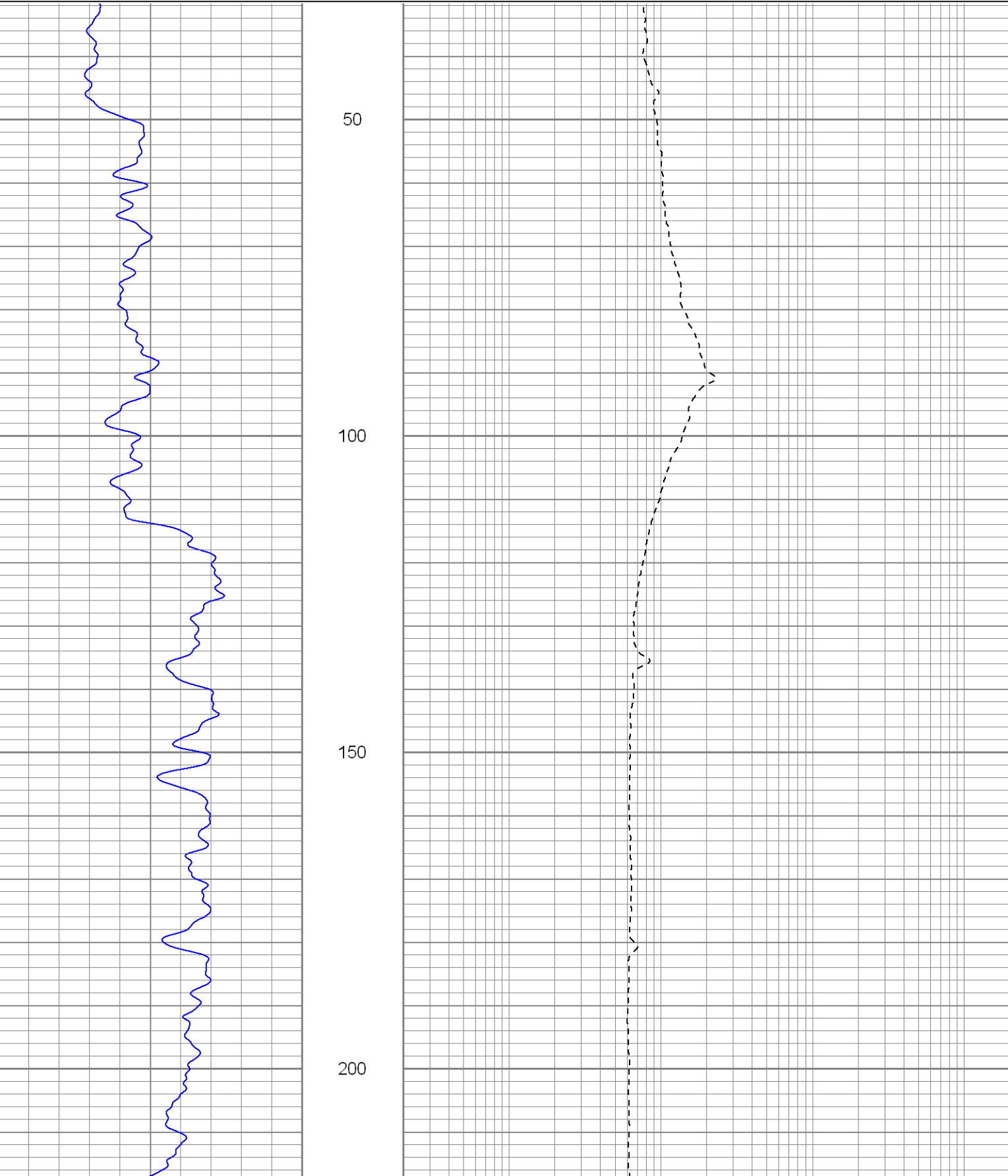
SUPERIOR
Black Lick, Pa.
Mercer, Pa.
Wooster, Oh.
Cleveland, Ok.
Trinidad, Co.

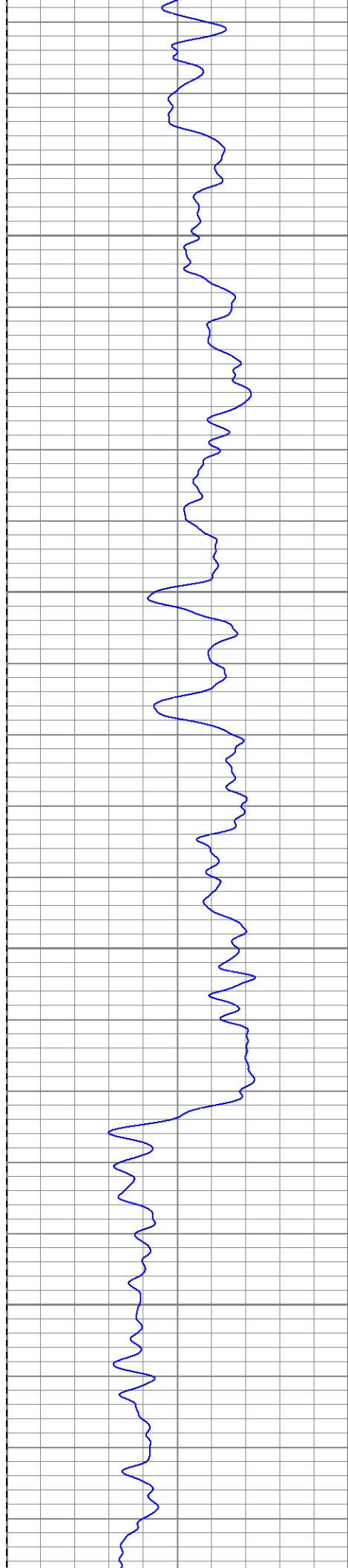
Main Pass

Database File: xtoac0515.db
Dataset Pathname: pass2.1
Presentation Format: dil
Dataset Creation: Mon Feb 18 15:44:50 2008 by Calc Open-Cased 070814
Charted by: Depth in Feet scaled 1:240

0	GR (GAPI)	200
-200	SP (mV)	0

0.2	RILM (Ohm-m)	2000
0.2	RILD (Ohm-m)	2000
0.2	RLL3 (Ohm-m)	2000



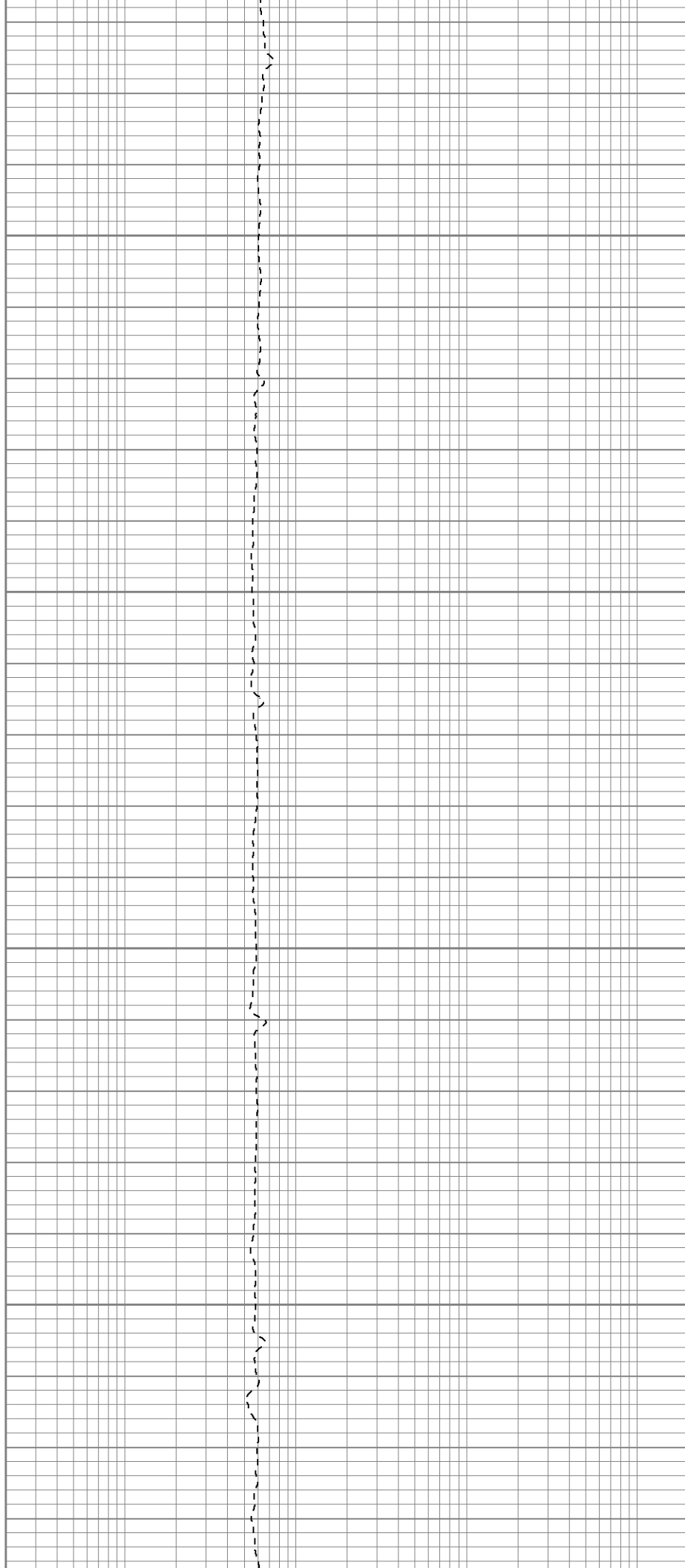


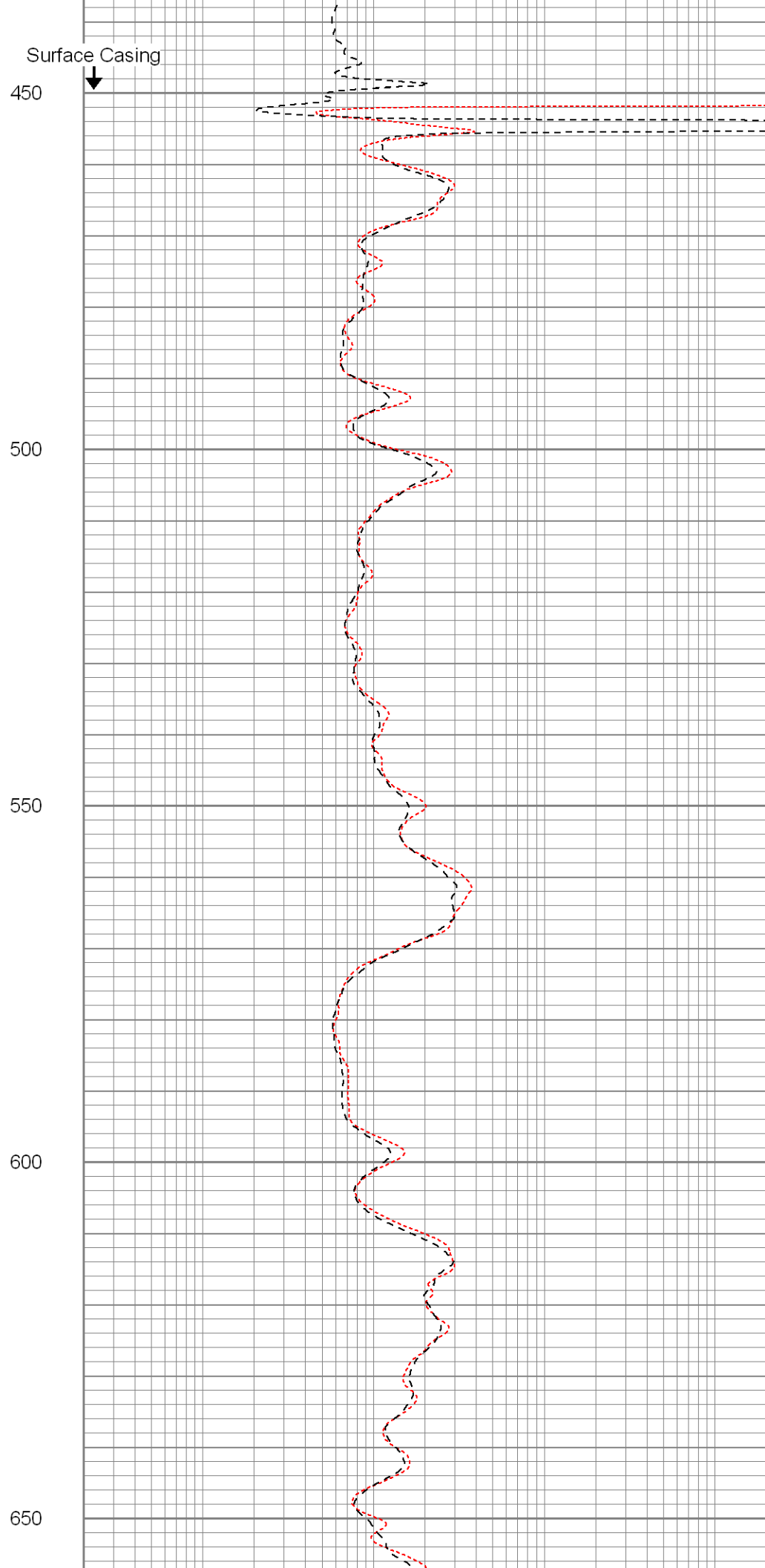
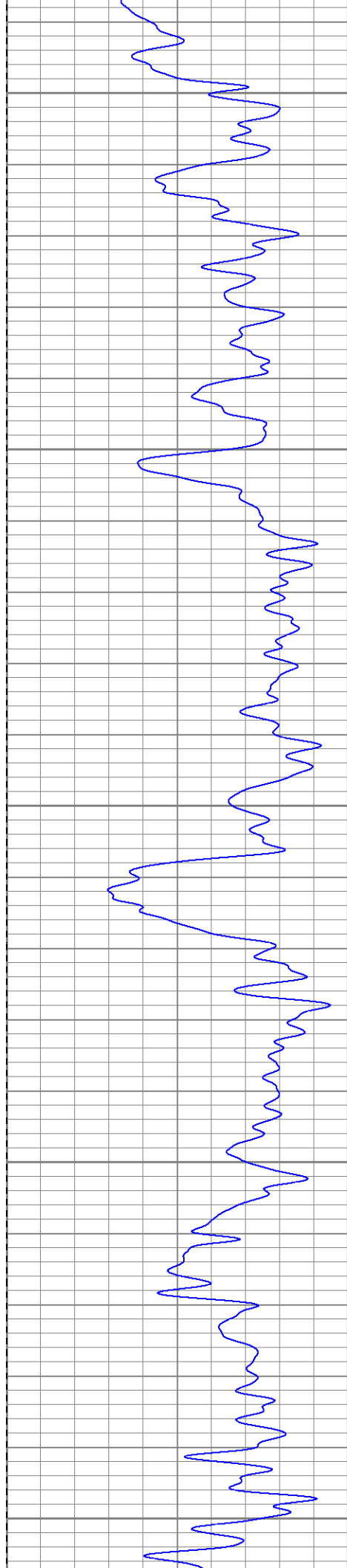
250

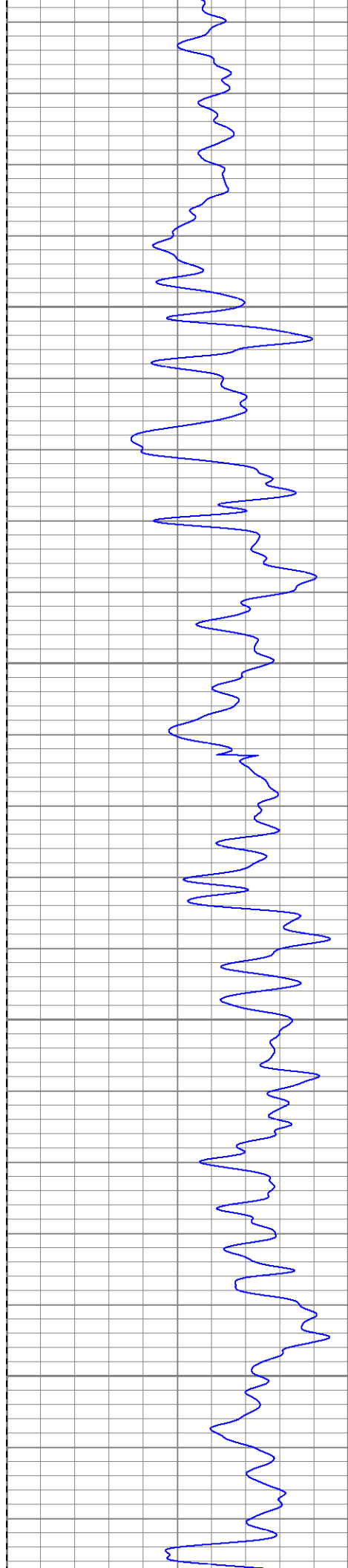
300

350

400





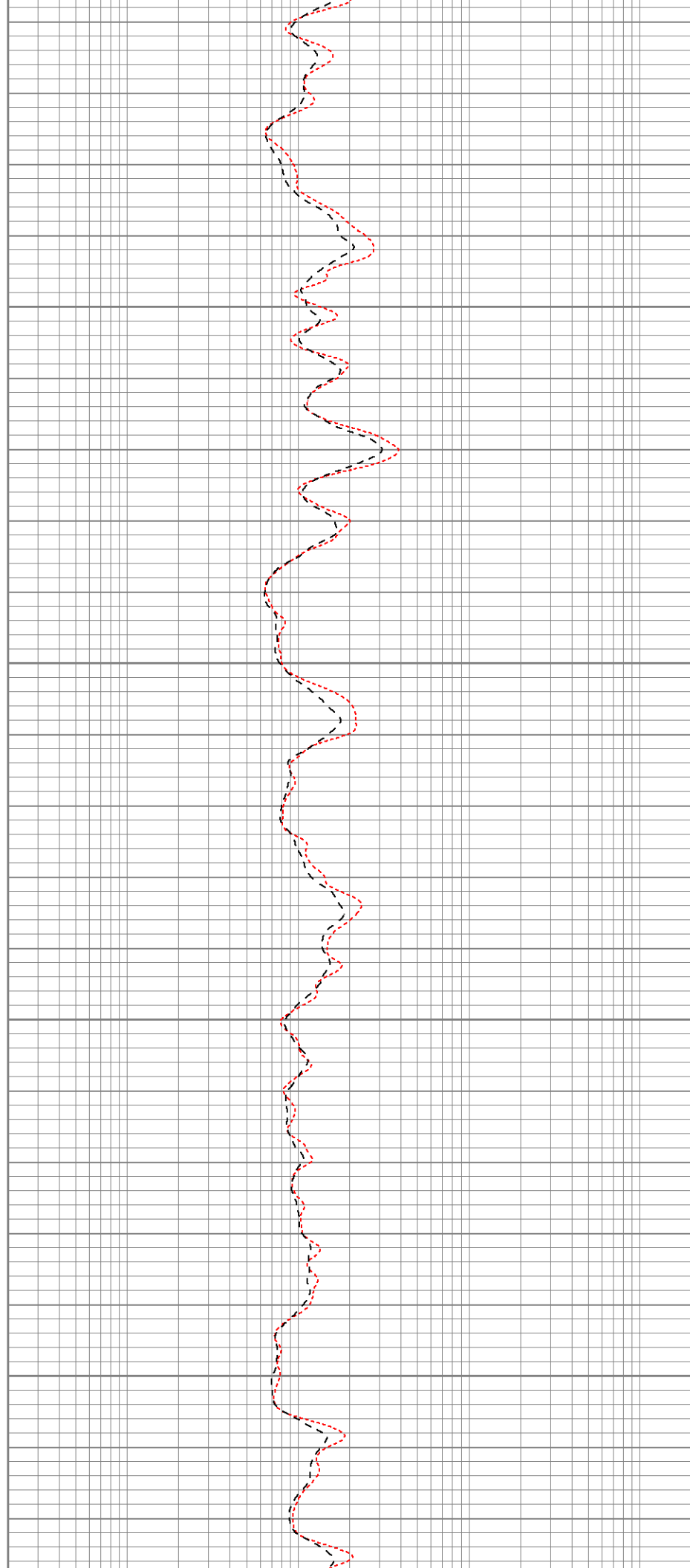


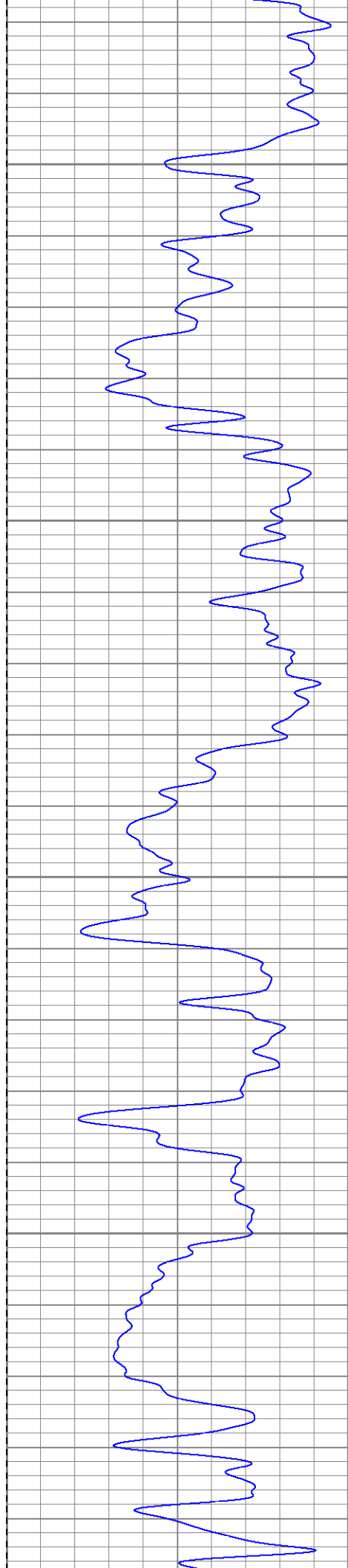
700

750

800

850



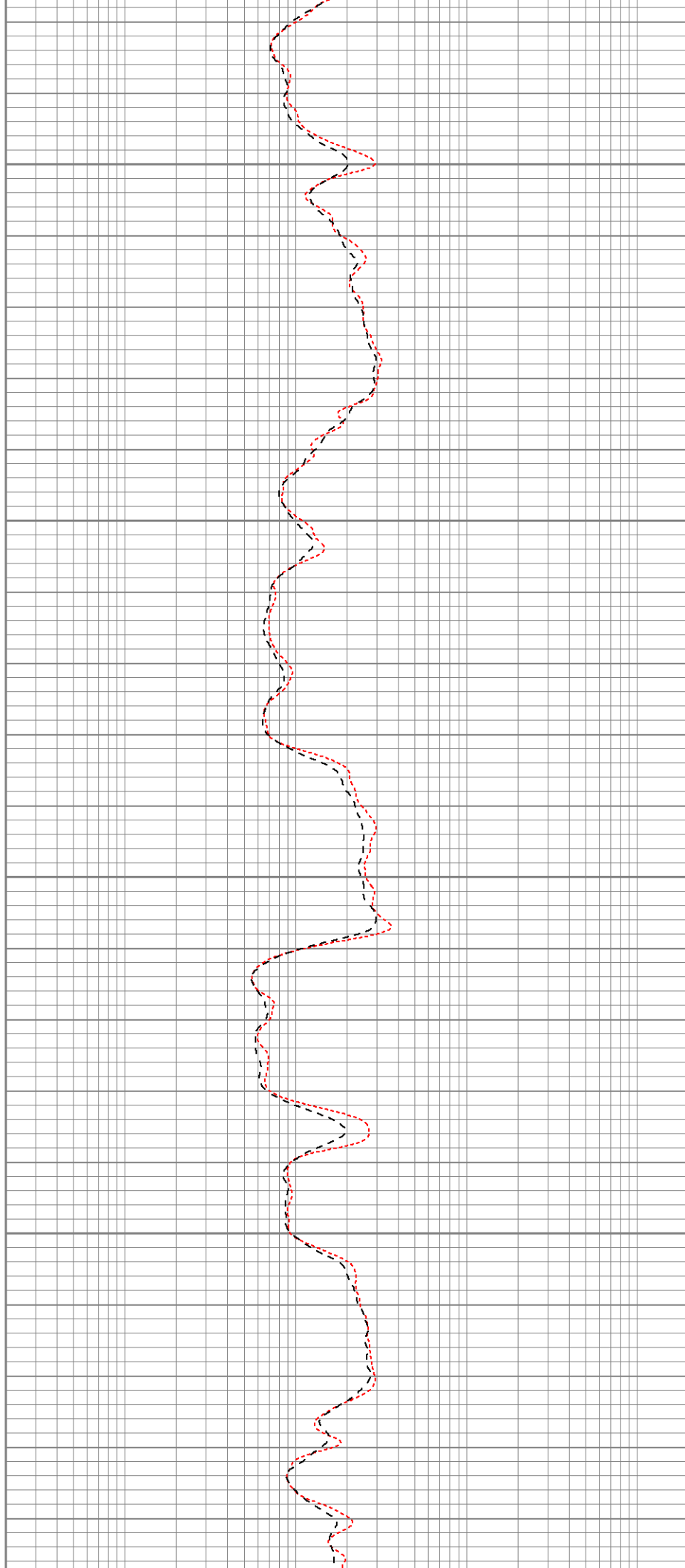


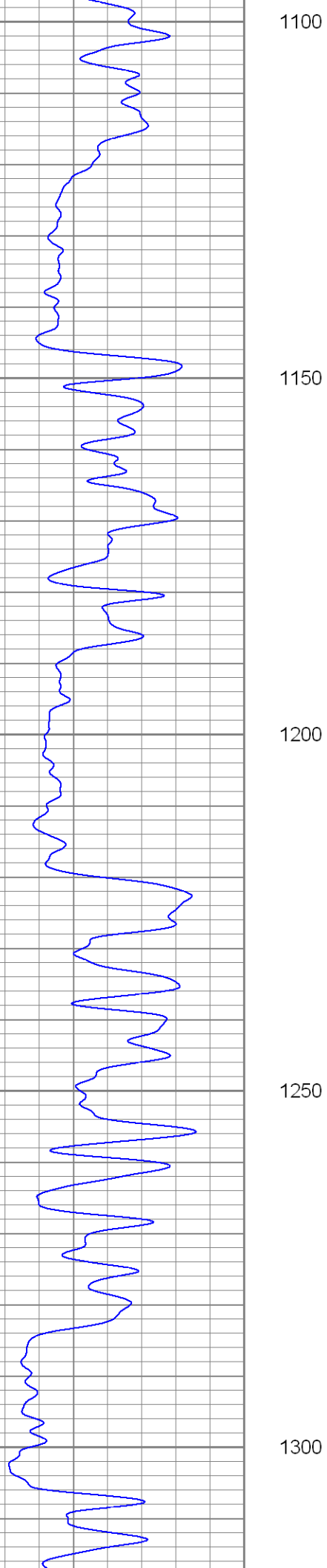
900

950

1000

1050





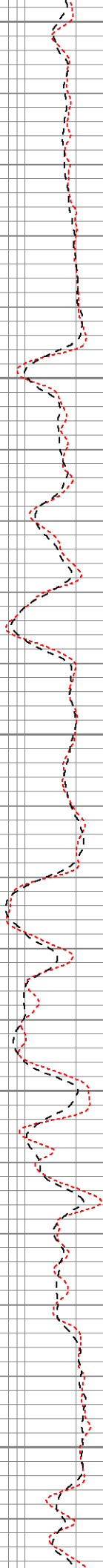
1100

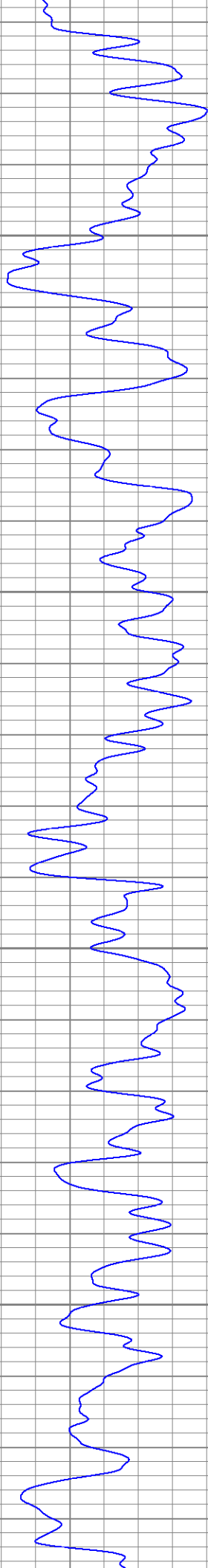
1150

1200

1250

1300



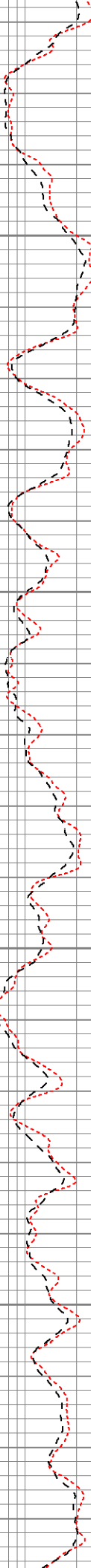


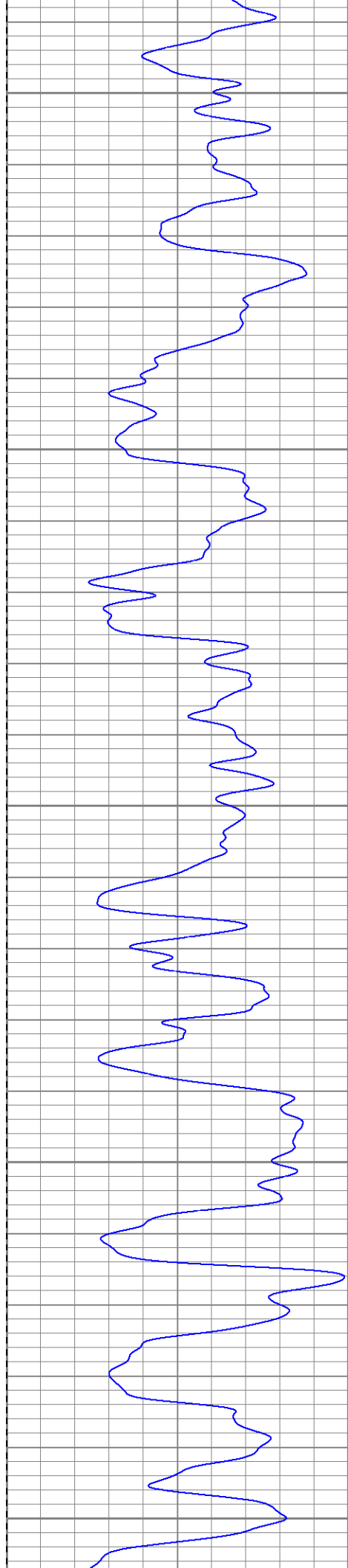
1350

1400

1450

1500





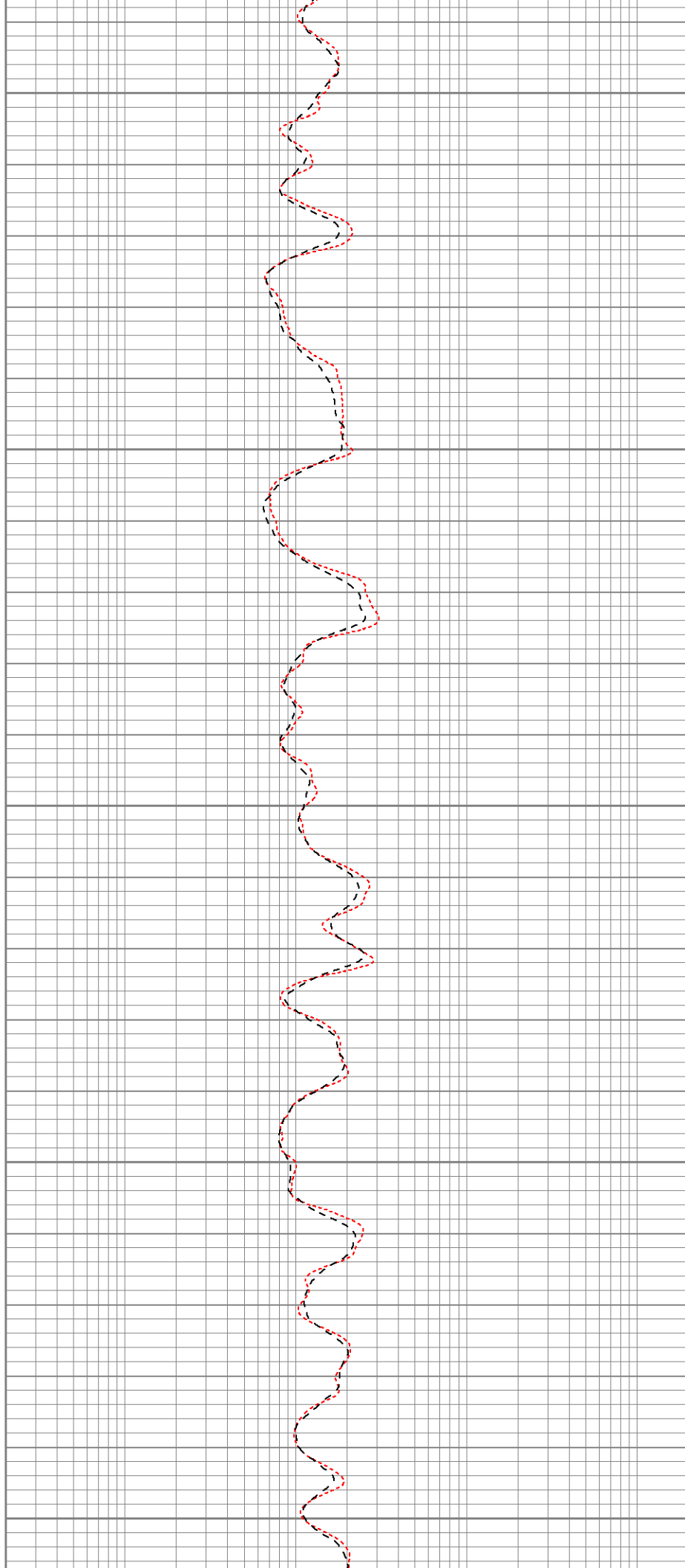
1550

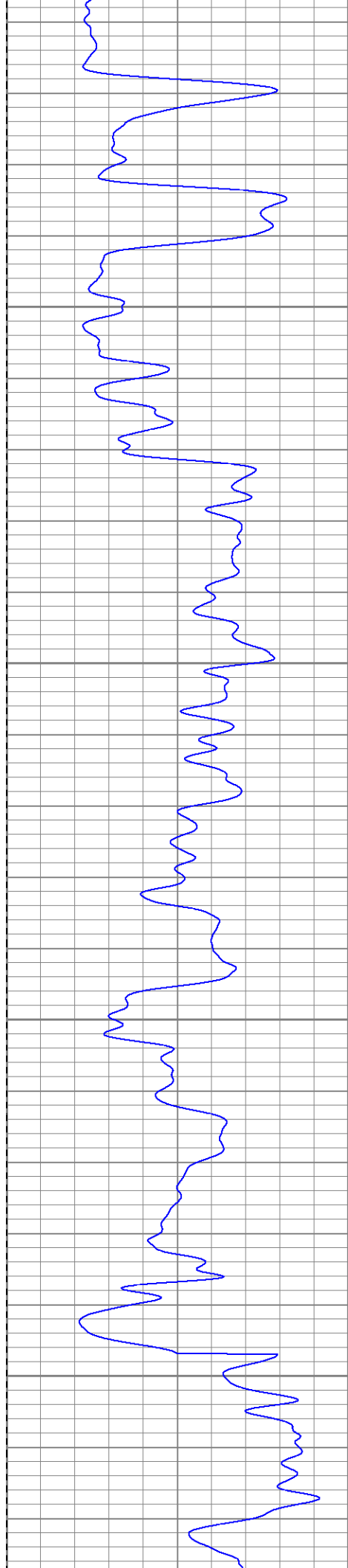
1600

1650

1700

1750



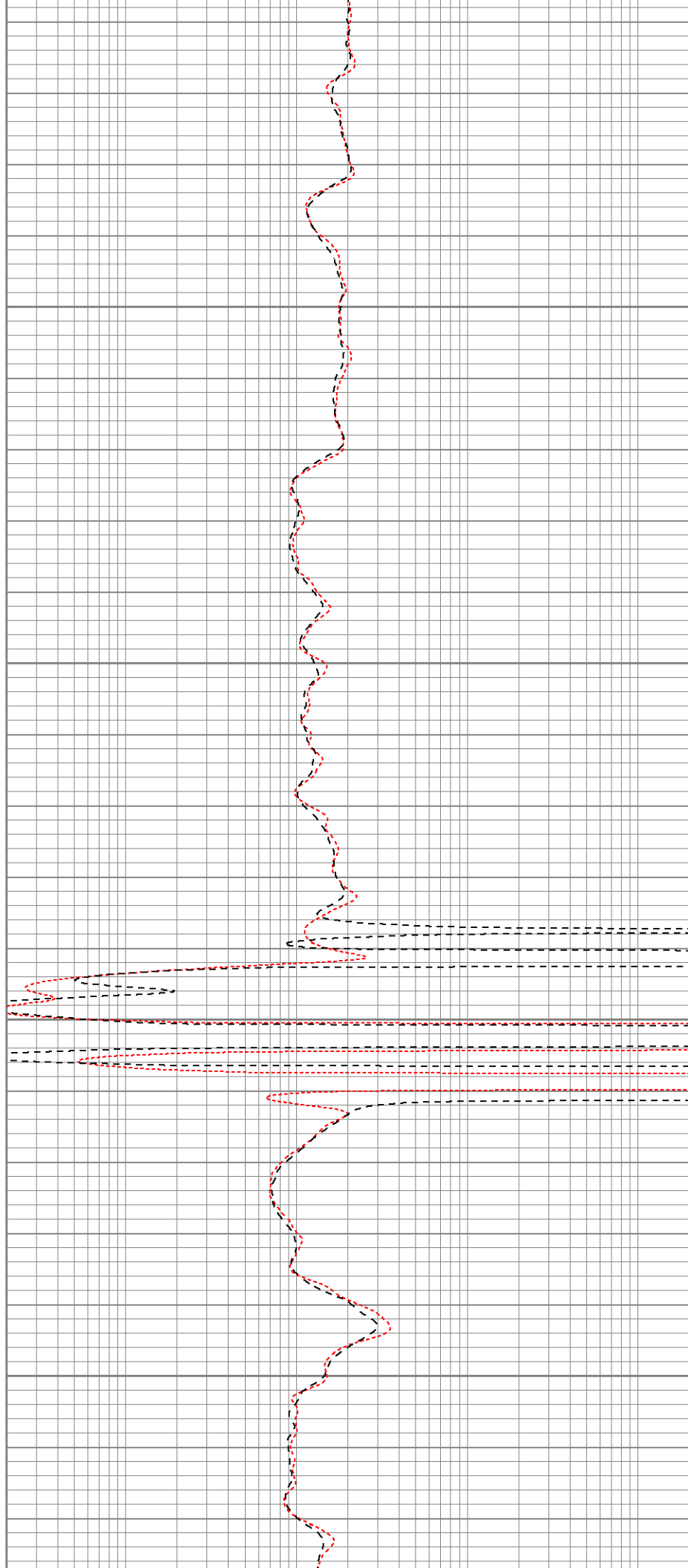


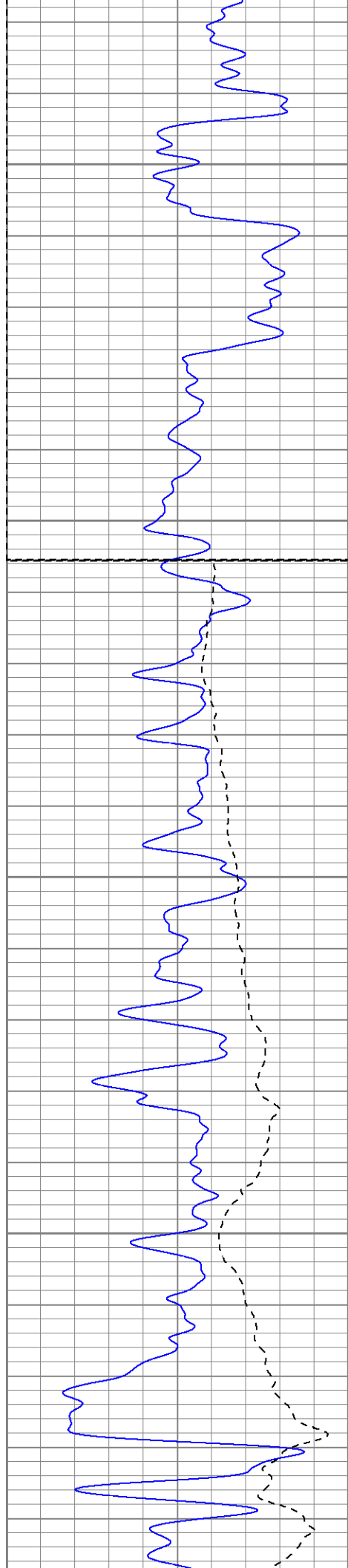
1800

1850

1900

1950





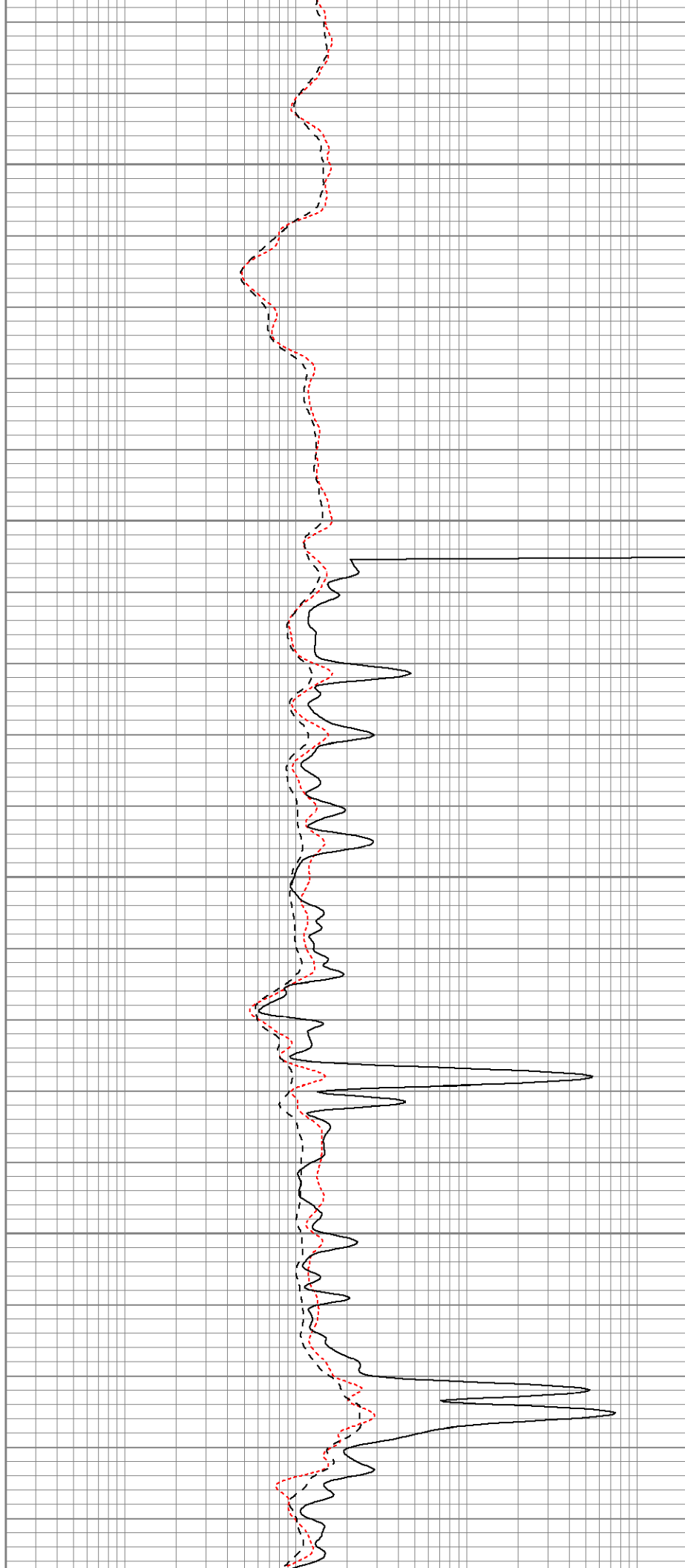
2000

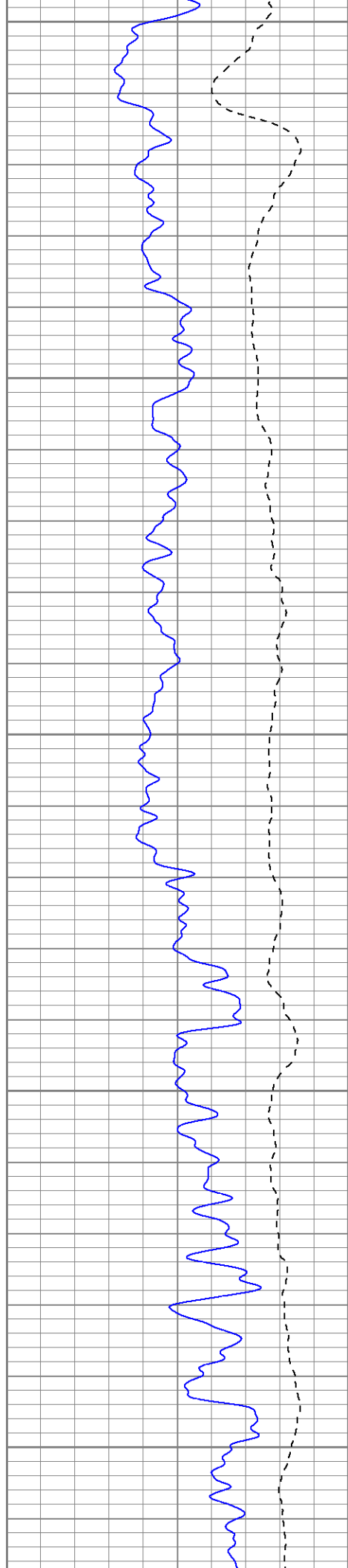
2050

Fluid Level

2100

2150





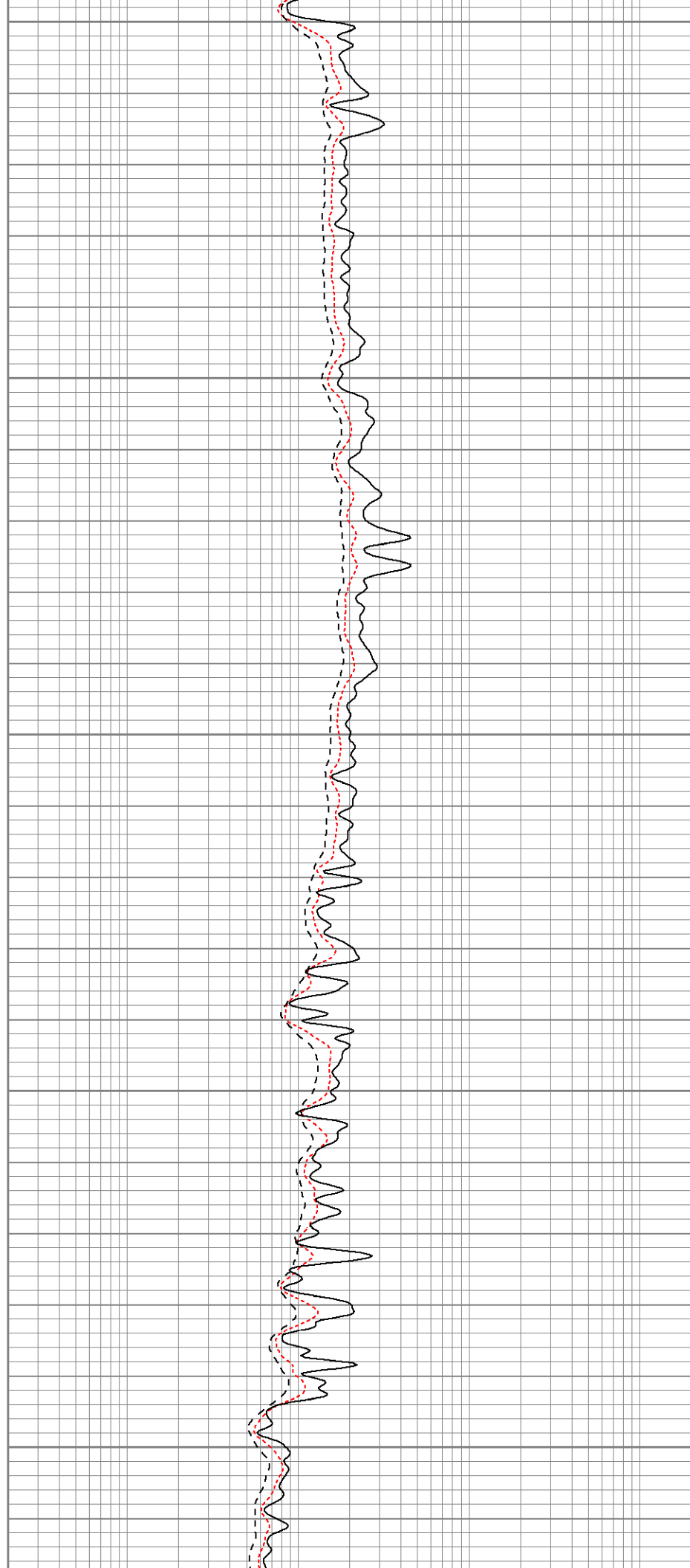
2200

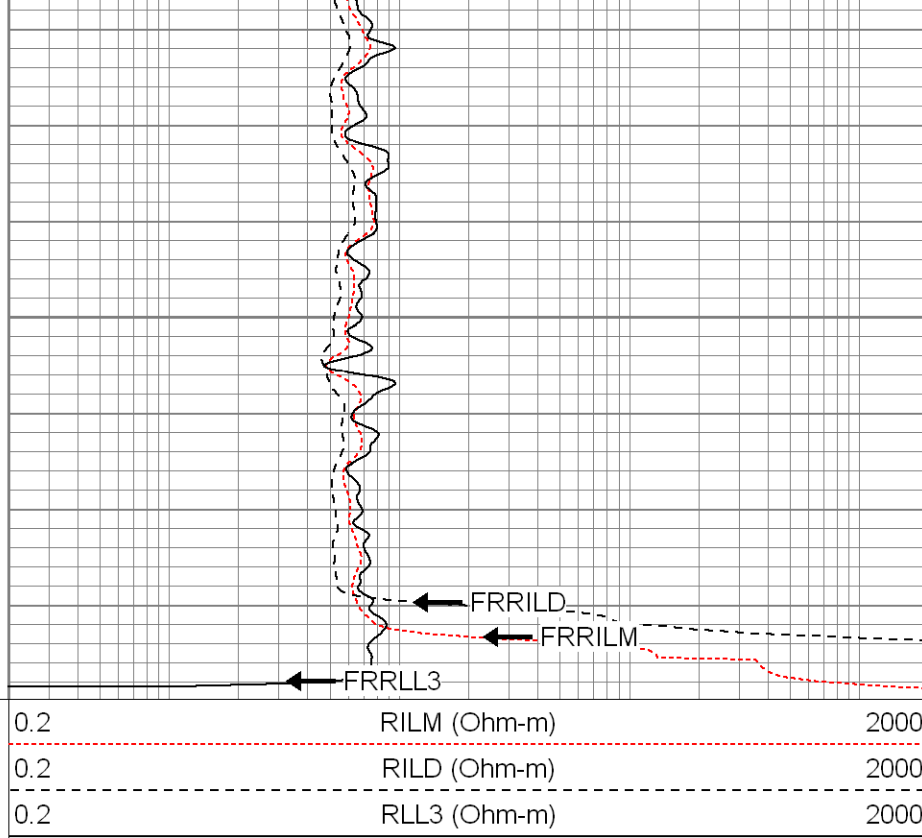
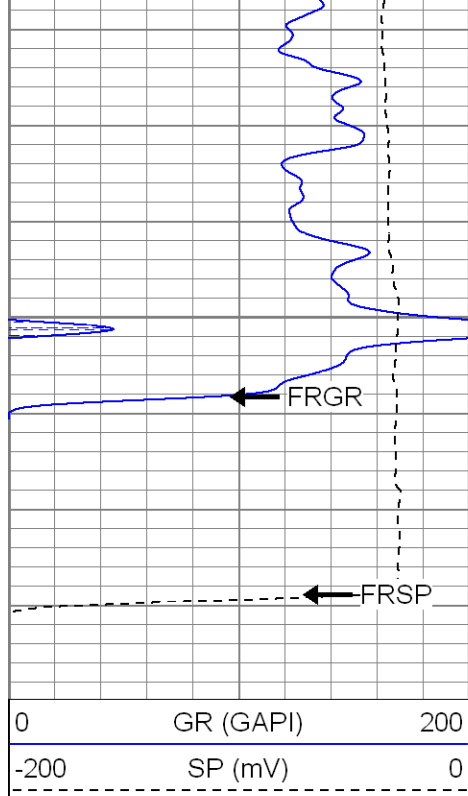
2250

2300

2350

2400

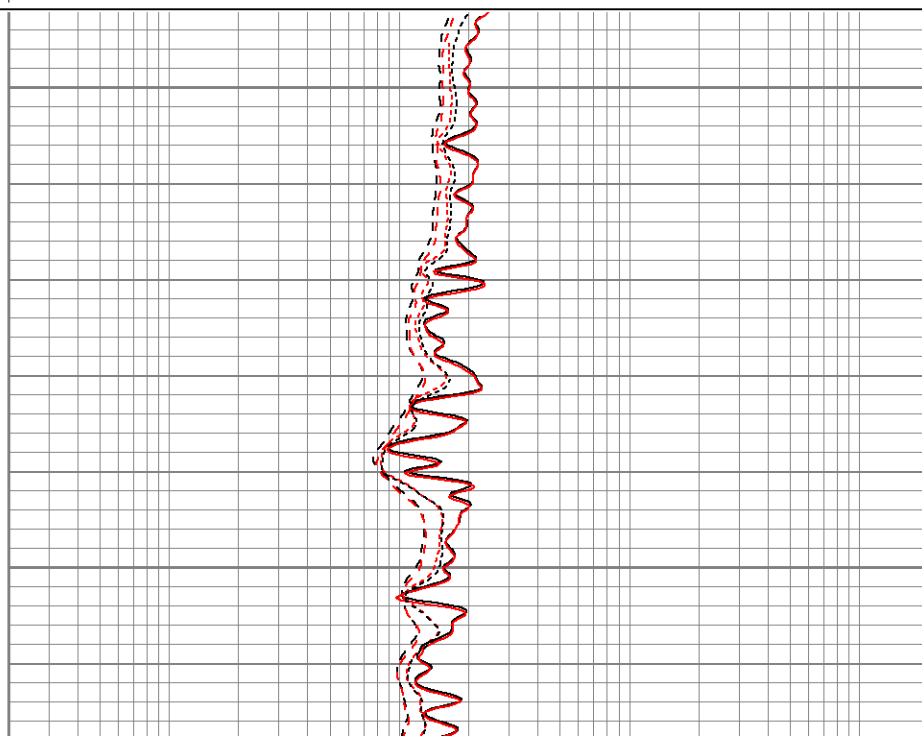
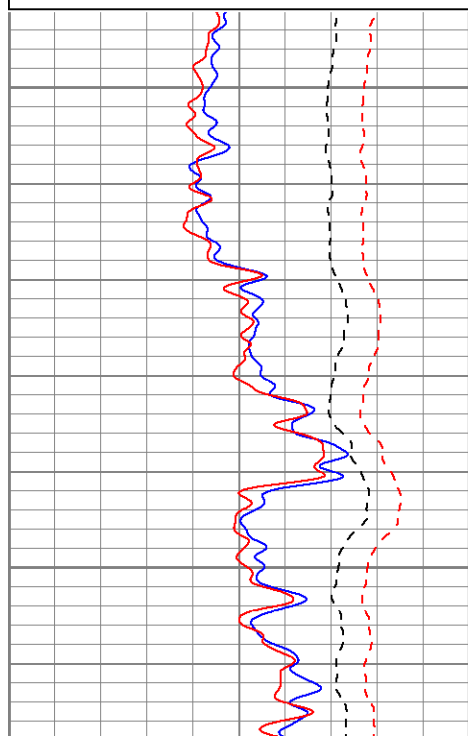


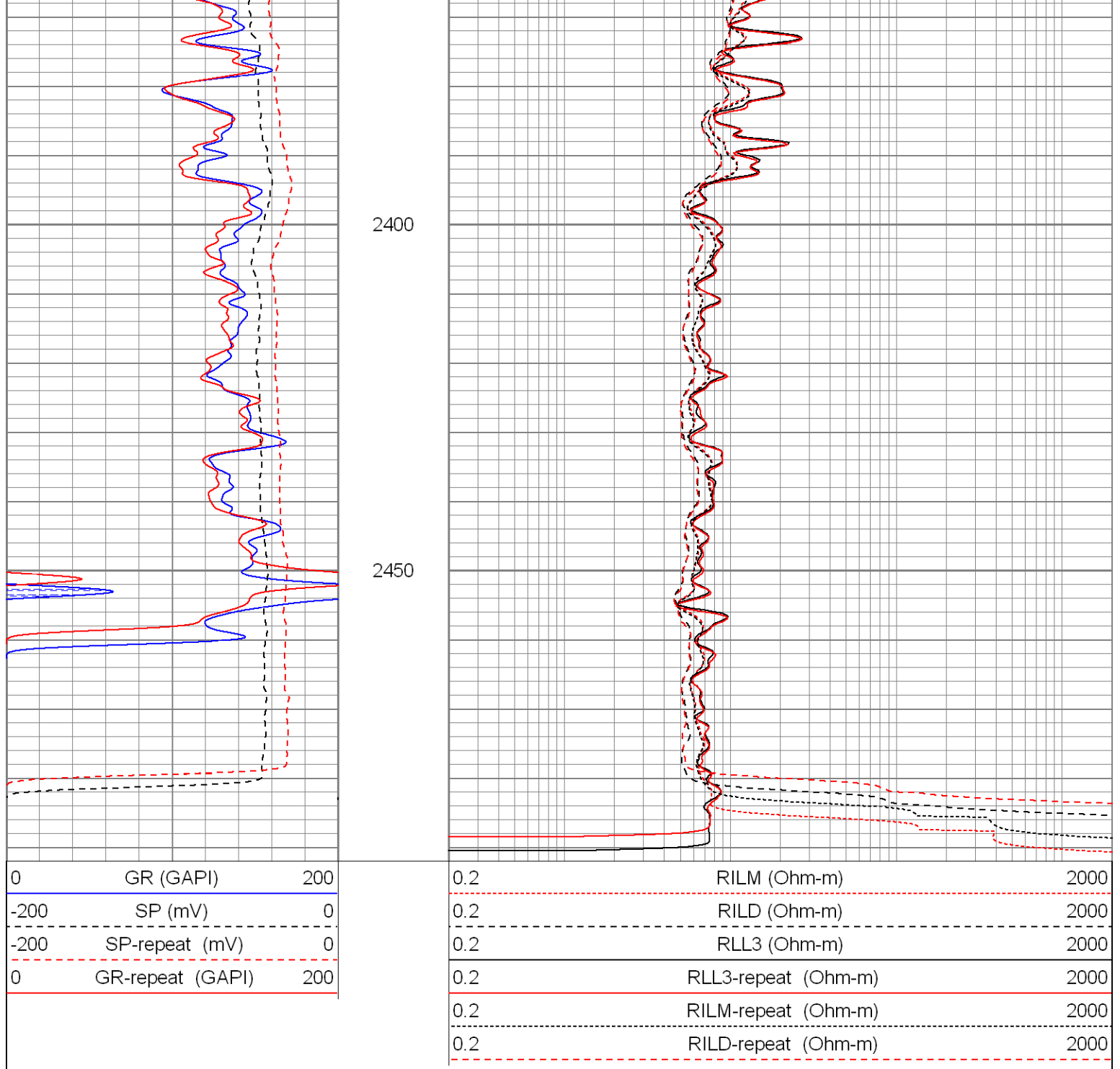


Database File: xtoac0515.db
 Dataset Pathname: pass1.2
 Presentation Format: dil
 Dataset Creation: Tue Feb 19 10:09:38 2008 by Calc Open-Cased 070814
 Charted by: Depth in Feet scaled 1:240

0	GR (GAPI)	200
-200	SP (mV)	0
-200	SP-repeat (mV)	0
0	GR-repeat (GAPI)	200


0.2	RILM (Ohm-m)	2000
0.2	RILD (Ohm-m)	2000
0.2	RLL3 (Ohm-m)	2000
0.2	RLL3-repeat (Ohm-m)	2000
0.2	RILM-repeat (Ohm-m)	2000
0.2	RILD-repeat (Ohm-m)	2000





Calibration Report								
Database File:		xtoac0515.db						
Dataset Pathname:		pass1						
Dataset Creation:		Mon Feb 18 13:34:28 2008 by Log Open-Cased 070814						
Dual Induction Calibration Report								
Serial-Model:		5375-G						
Surface Cal Performed:		Wed Feb 06 09:29:54 2008						
Downhole Cal Performed:		Wed Feb 06 09:31:14 2008						
Surface Calibration								
Loop:	Readings			V	References		Results	
	Air	Loop	Air		Loop	m	b	
Deep	0.002	0.622		0.000	500.000	mmho-m	806.307	-1.737

Medium	0.005	0.745	V	0.000	550.000	mmho-m	742.812	-3.450
Internal:	Zero	Cal		Zero	Cal		m	b
Deep	0.003	0.622	V	0.000	500.000	mmho-m	806.784	-2.176
Medium	0.005	0.745	V	0.000	550.000	mmho-m	743.382	-3.766
Downhole Calibration								
	Readings			References			Results	
Internal:	Zero	Cal		Zero	Cal		m	b
Deep	0.241	500.512	mmho-m	0.438	500.143	mmho-m	0.999	0.197
Medium	0.213	550.041	mmho-m	0.313	549.891	mmho-m	1.000	0.100
Shallow	2.508	0.009	V	500.000	2.000	Ohm-m	125.000	-3.000
Compensated Density Calibration Report								
Serial-Model:				2118-poilex				
Source / Verifier:				/				
Master Calibration Performed:				Mon Jan 28 14:40:20 2008				
Master Calibration								
	Density			Far Detector		Near Detector		
Magnesium	1.710	g/cc		692.05		655.57	cps	
Aluminum	2.590	g/cc		158.48		456.38	cps	
Spine Angle = 76.20				Density/Spine Ratio = 0.580				
	Size			Reading				
Small Ring	8.50	in		4.33	V			
Large Ring	14.00	in		8.24	V			
Gamma Ray Calibration Report								
Serial Number:			2000					
Tool Model:			P2000					
Performed:			Mon Feb 18 07:40:11 2008					
Calibrator Value:			1.0	GAPI				
Background Reading:			0.0	cps				
Calibrator Reading:			1.0	cps				
Sensitivity:			0.2700	GAPI/cps				
Neutron Calibration Report								
Serial Number:			5145					
Tool Model:			G					
Performed:			Wed Feb 06 10:21:29 2008					
Calibrator Value:			1200	NAPI				
Calibrator Reading:			1700	cps				
Sensitivity:			1	NAPI/cps				

Sensor	Offset (ft)	Schematic	Description	Len (ft)	OD (in)	Wt (lb)
			None	0.75	1.50	5.00

Tool Joint	Length (ft)	Weight (lb)	O.D. (in)	Material	Length (ft)	Weight (lb)	O.D. (in)
NEU	36.75			NEU-G (5145) Gearhart Epithermal	5.65	3.50	85.00
GR	31.05			GR-P2000 (2000)	3.67	3.25	40.00
				CDL-poilex (2118)	8.83	4.00	275.00
LSD	22.63						
DCAL	22.22						
SSD	22.05						
CILD	10.60			DIL-G (5375) Gearhart	20.80	4.00	345.00
SP	10.60						
CILM	6.89						
RLL3	1.70						
Dataset: xtoac0515.db: field/well/run1/pass1 Total Length: 39.70 ft Total Weight: 750.00 lb O.D. 4.00 in							