

BRAN-DEX		WIRELINE SERVICES	
Company K.P.KAUFFMAN COMPANY INC. Well HEPP 32-5 Field WATTENBERG County WELD State COLORADO			
Well HEPP 32-5 Field WATTENBERG County WELD State COLORADO		Company K.P.KAUFFMAN COMPANY INC.	
Location: API # : 05 - 123 - 23534 - 00 SW / NW SEC 32 TWP 4 N RGE 67 W GROUND LEVEL Elevation 5014 Log Measured From KELLY BUSHING Drilling Measured From KELLY BUSHING		Permanent Datum K.B. 5026 D.F. 5025 G.L. 5014	
CEMENT BOND GAMMA RAY COLLAR CORRELATION LOG			
Run Number ONE Depth Driller 7525 Depth Logger 7481 Bottom Logged Interval 7474 Top Log Interval 3600 Open Hole Size 7 7/8 Type Fluid WATER Density / Viscosity Max Recorded Temp. NOT RECORDED Estimated Cement Top 3700 Time Well Ready Time Logger on Bottom Equipment Number 455MWHITE/MAST Location BRIGHTON Recorded By HAYES Witnessed By MR.RICK OHLEMEIR Borehole Record Run Number Bit From To Size Weight From To Tubing Record			
Casing Record Surface String Prot String Production String Size Wgt/ft Top Bottom SURFACE TOTAL DEPTH Liner			

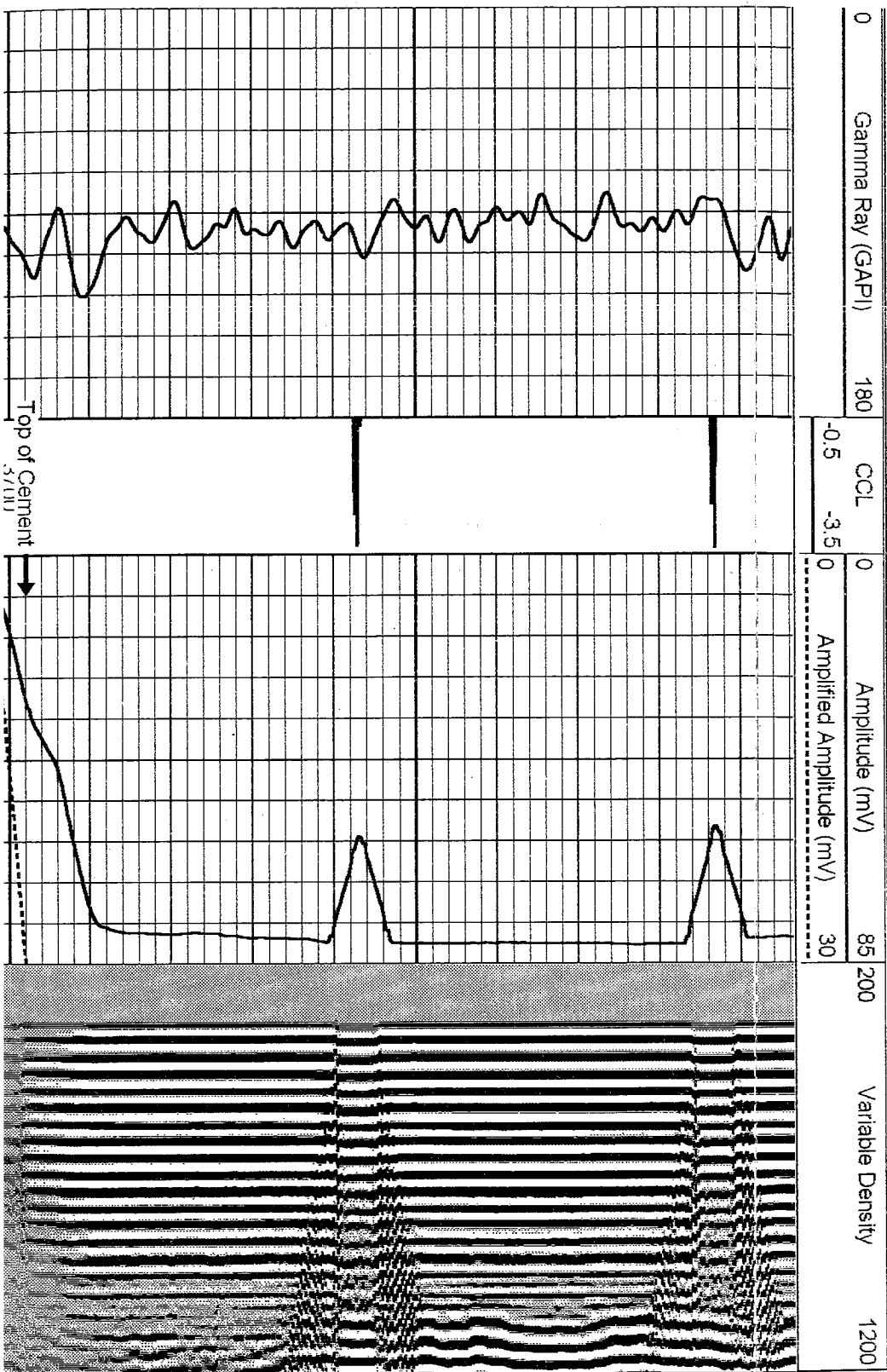
<<< Fold Here >>>

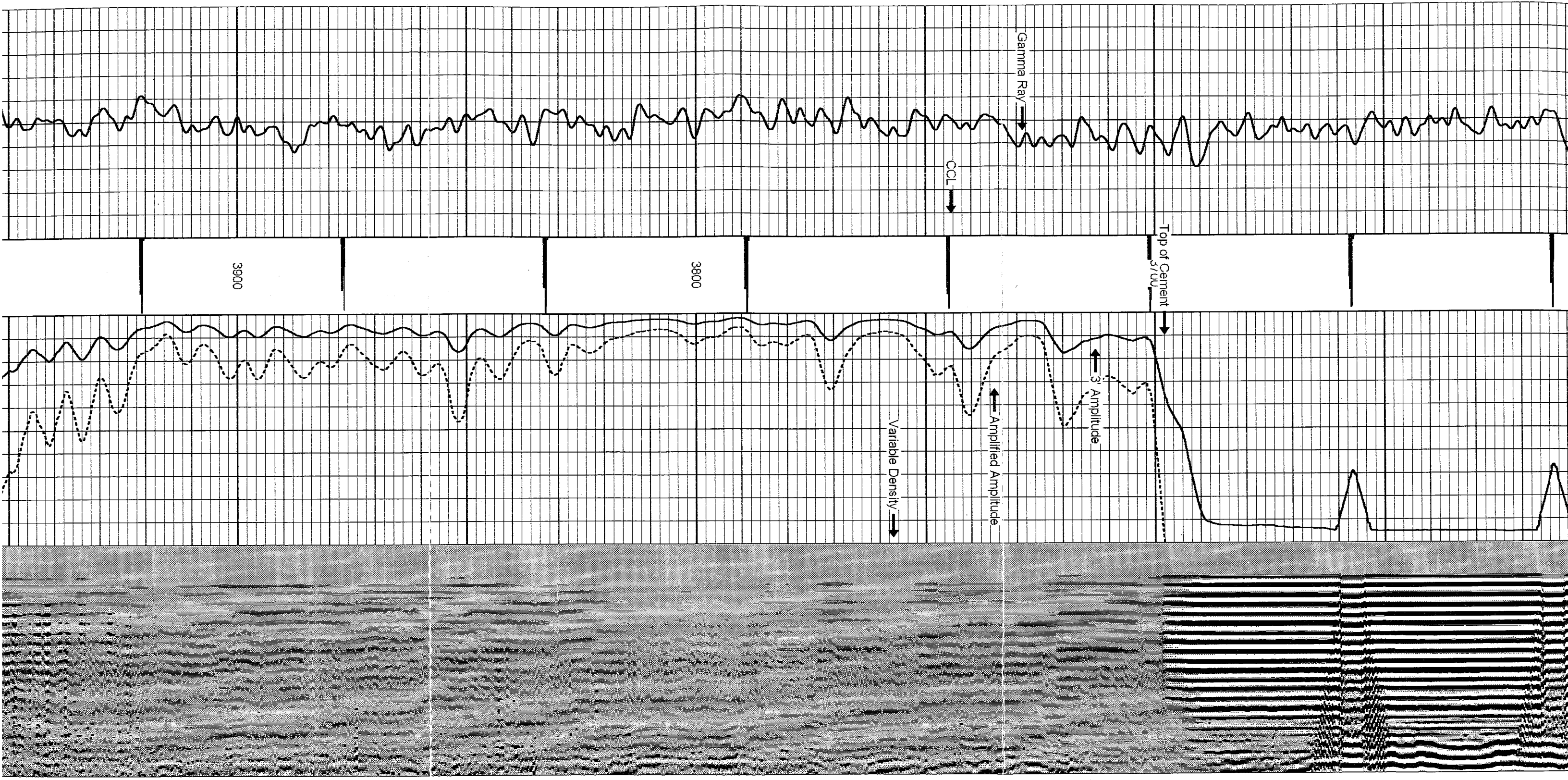
All interpretations are opinions based on inferences from electrical or other measurements and we cannot and do not guarantee the accuracy or correctness of any interpretation, and we shall not, except in the case of gross or willful negligence on our part, be liable or responsible for any loss, costs, damages, or expenses incurred or sustained by anyone resulting from any interpretation made by any of our officers, agents or employees. These interpretations are also subject to our general terms and conditions set out in our current Price Schedule.

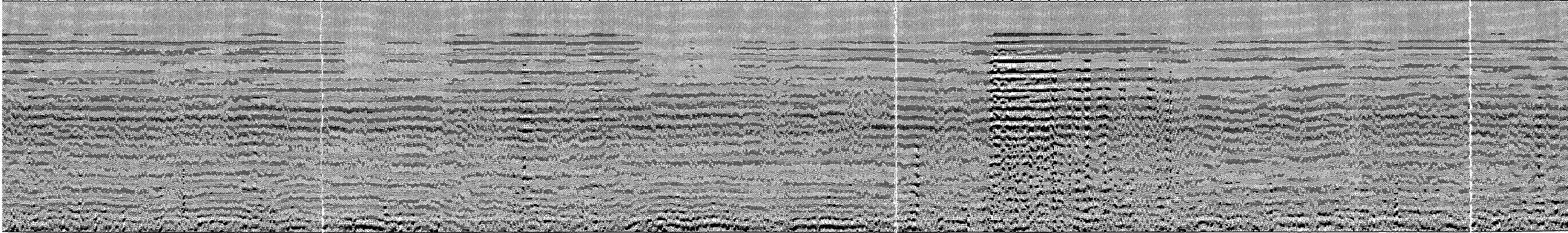
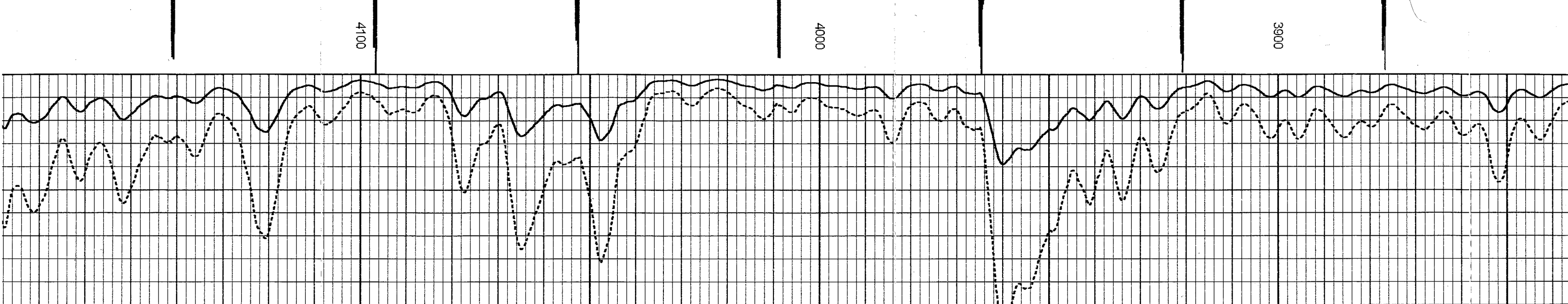
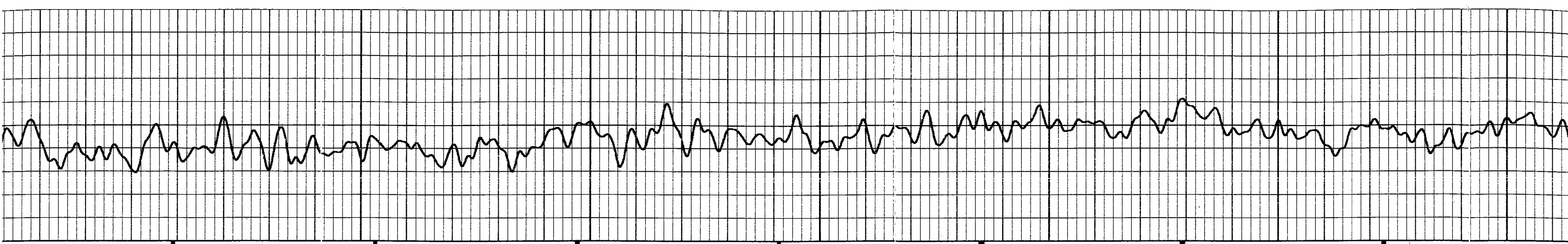
Comments

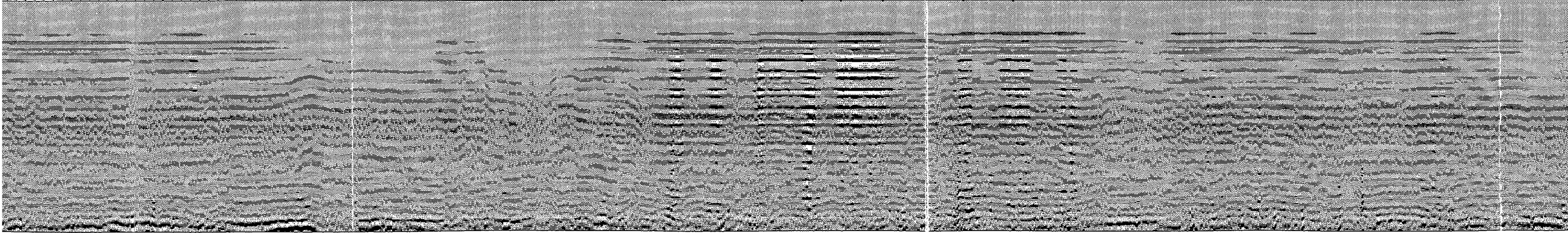
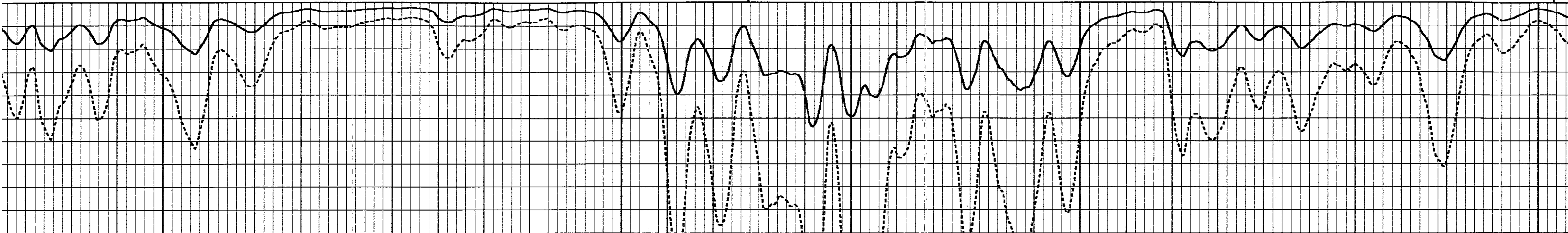
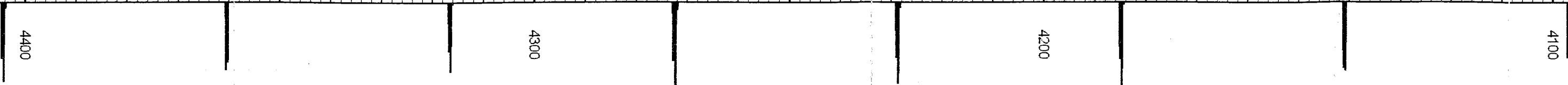
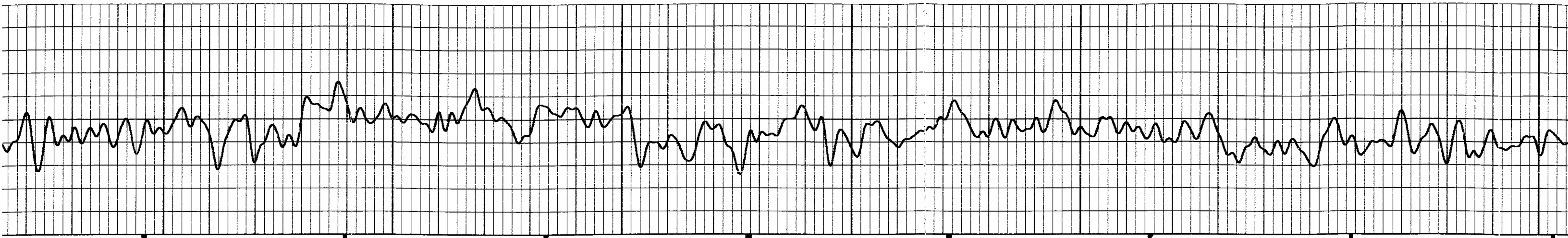
LOG CORRELATED TO CD CN DI LOG DATED 1 - 13 - 2007
LOG SPLIT AT 5500 FOR CORRELATION PURPOSES

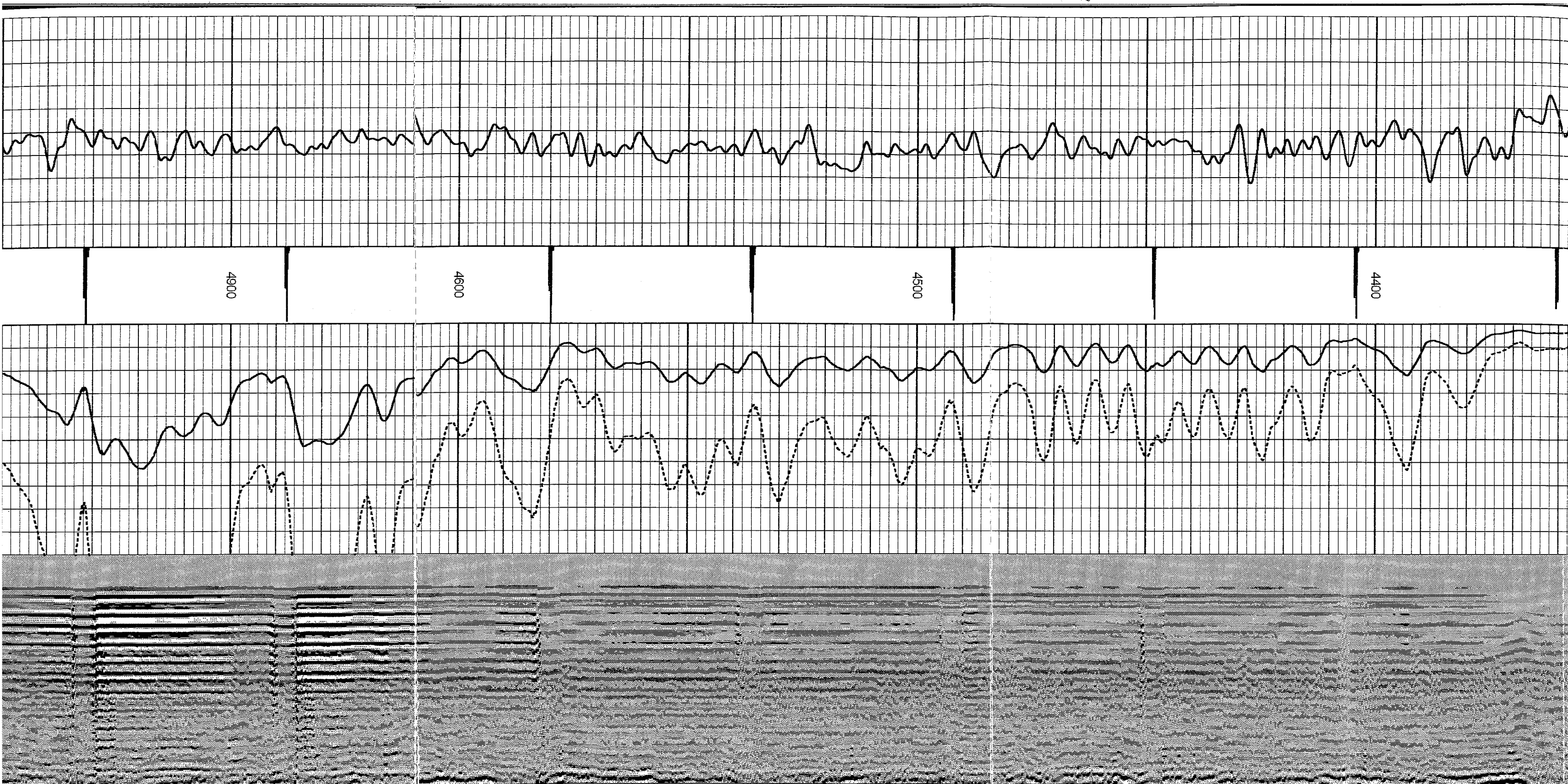
Database File: kpk15.db
Dataset Pathname: pass2
Presentation Format: cbix
Dataset Creation: Fri Feb 16 08:53:00 2007 by Log Warrior 7.0 STD Cas
Charted by: Depth in Feet scaled 1:240

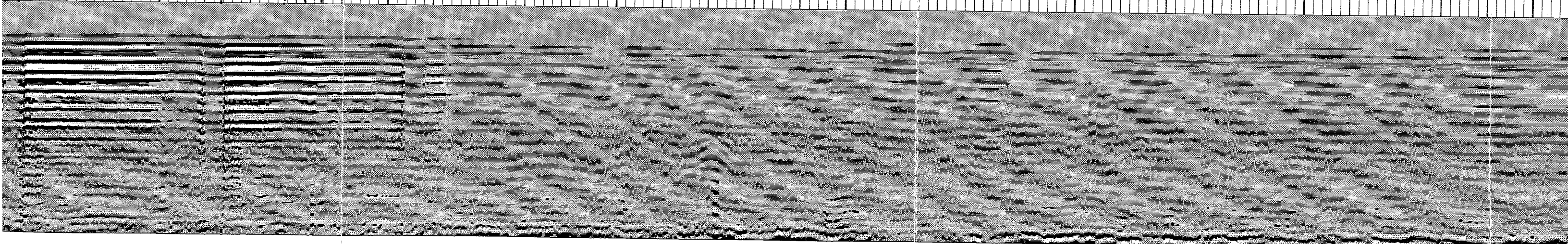
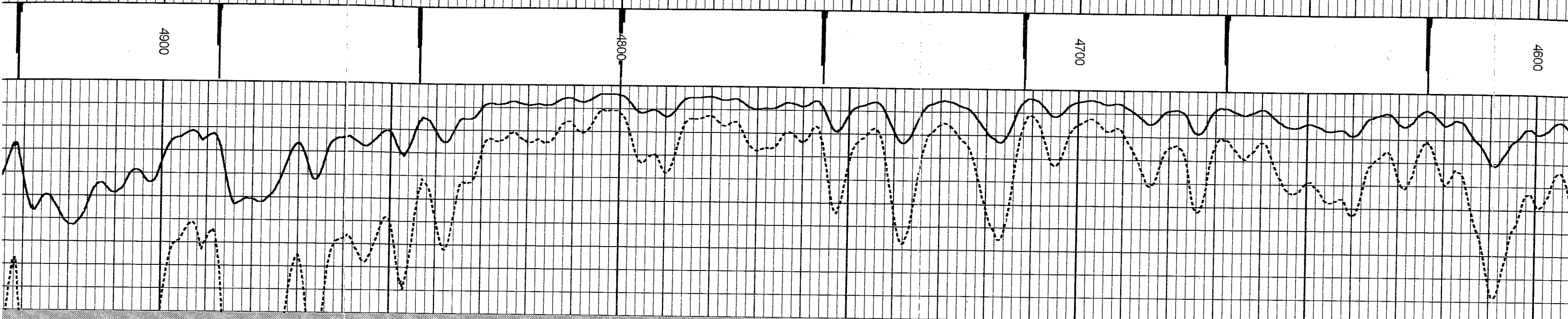
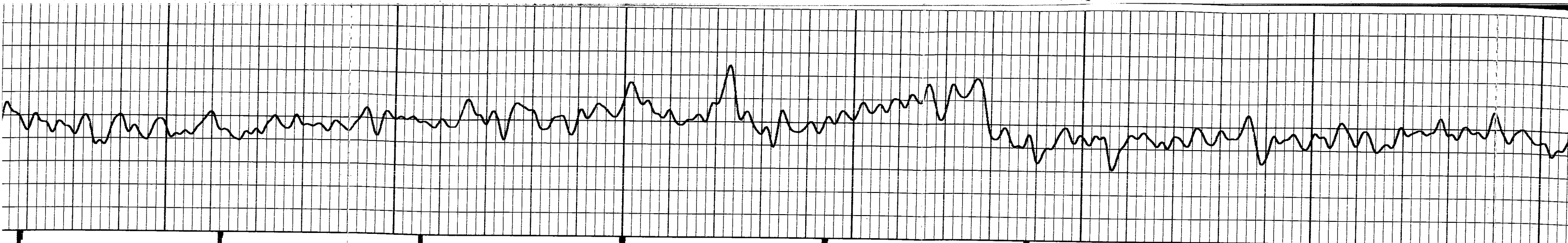


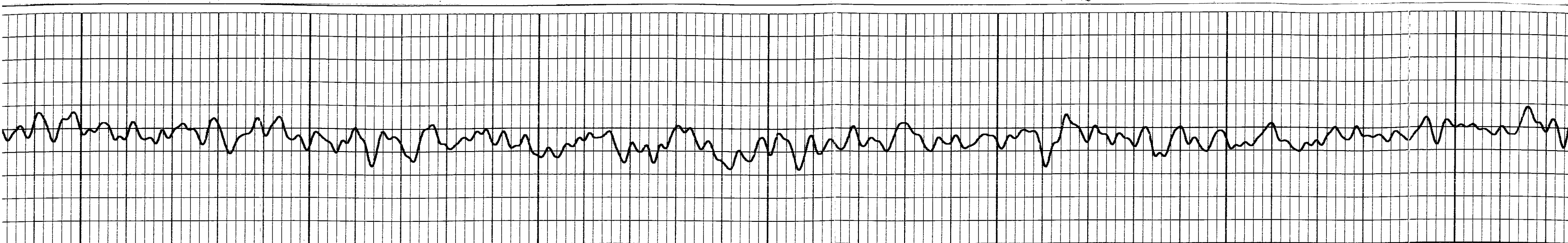




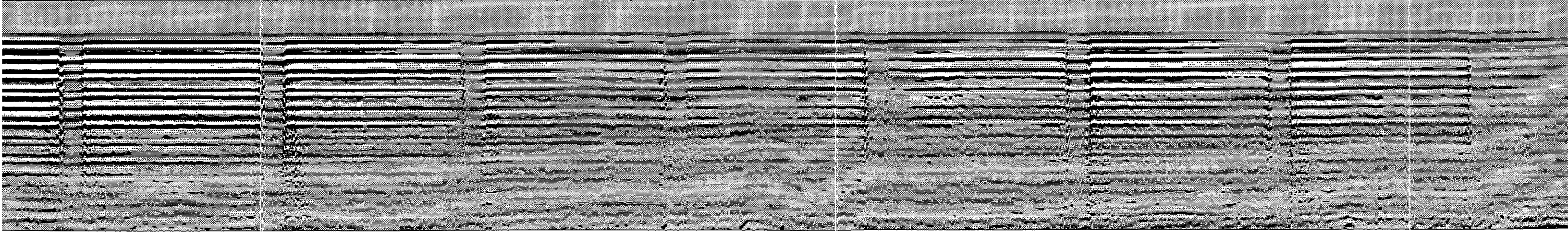
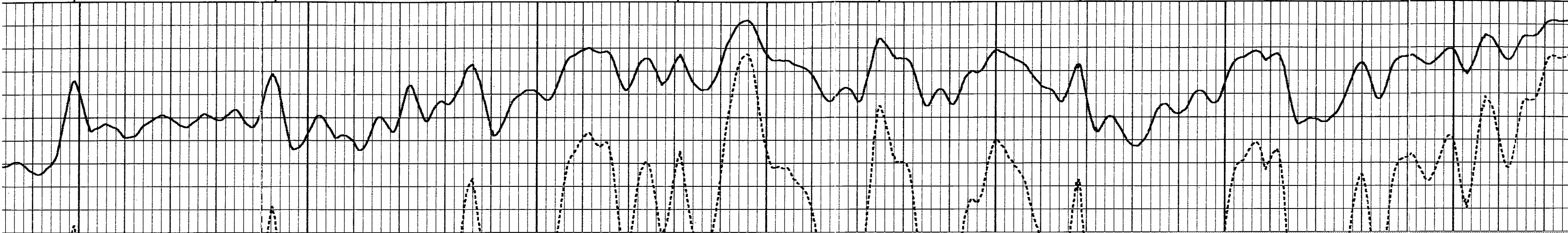


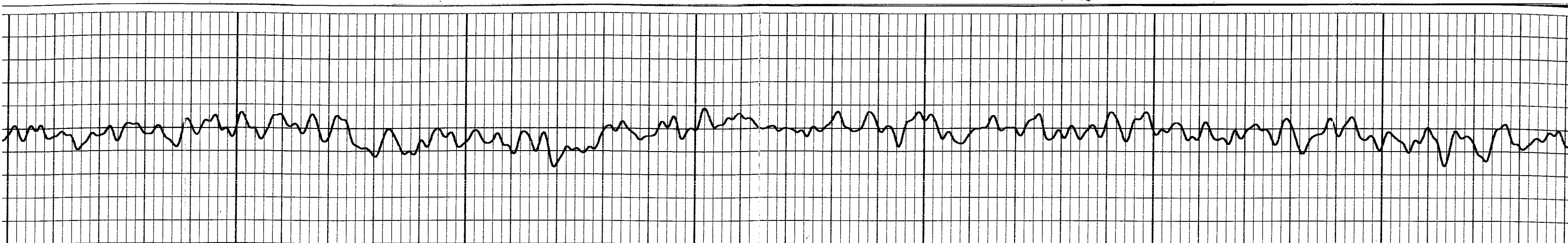




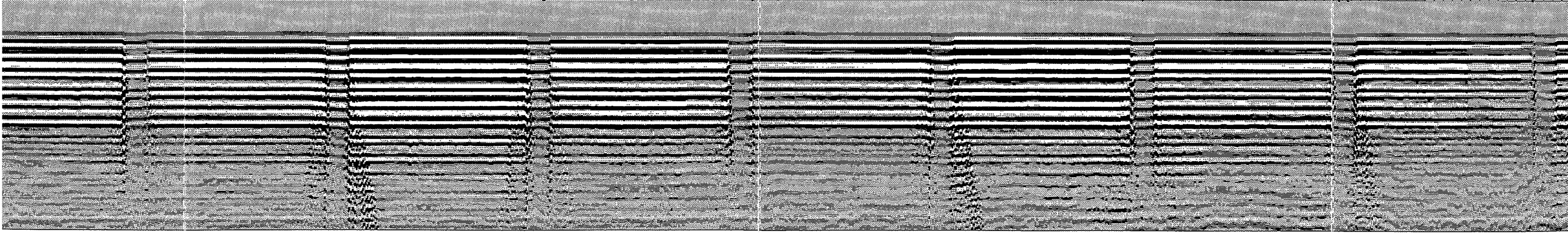
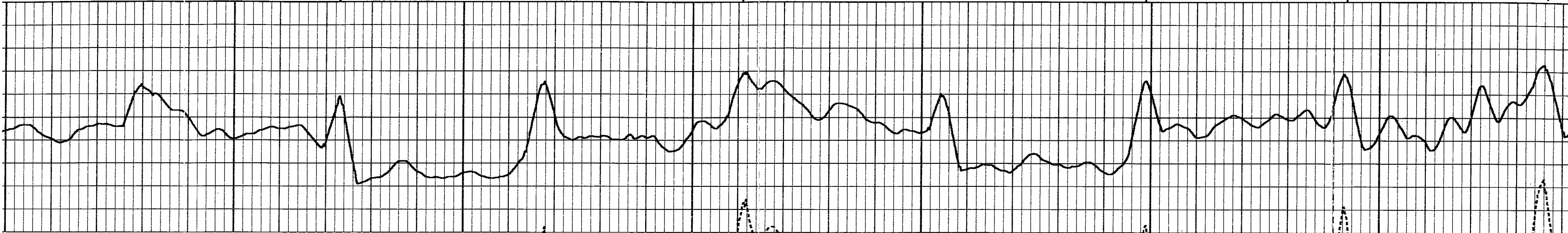


5100 5000 4900



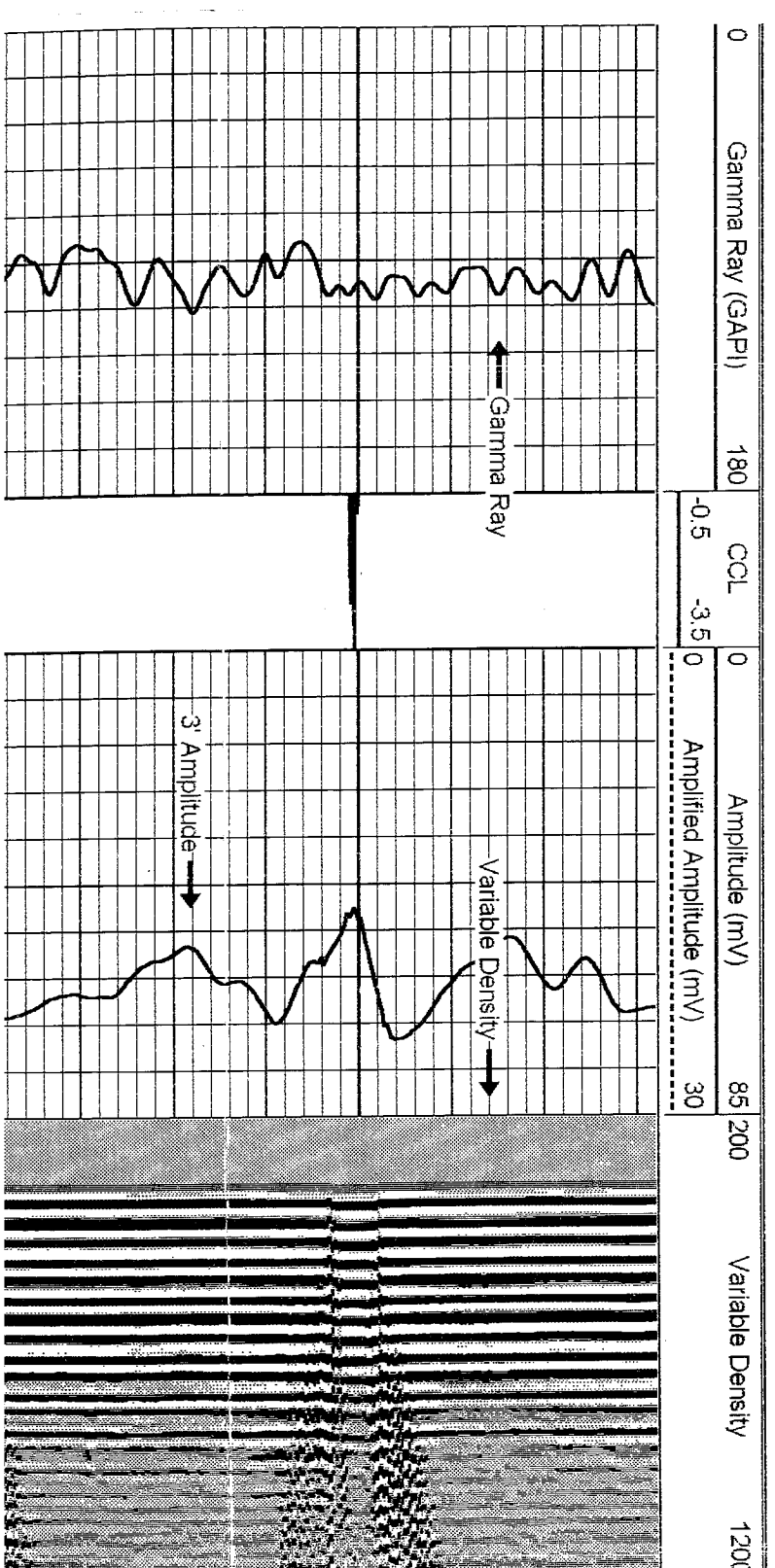


5400 5300 5200 5100





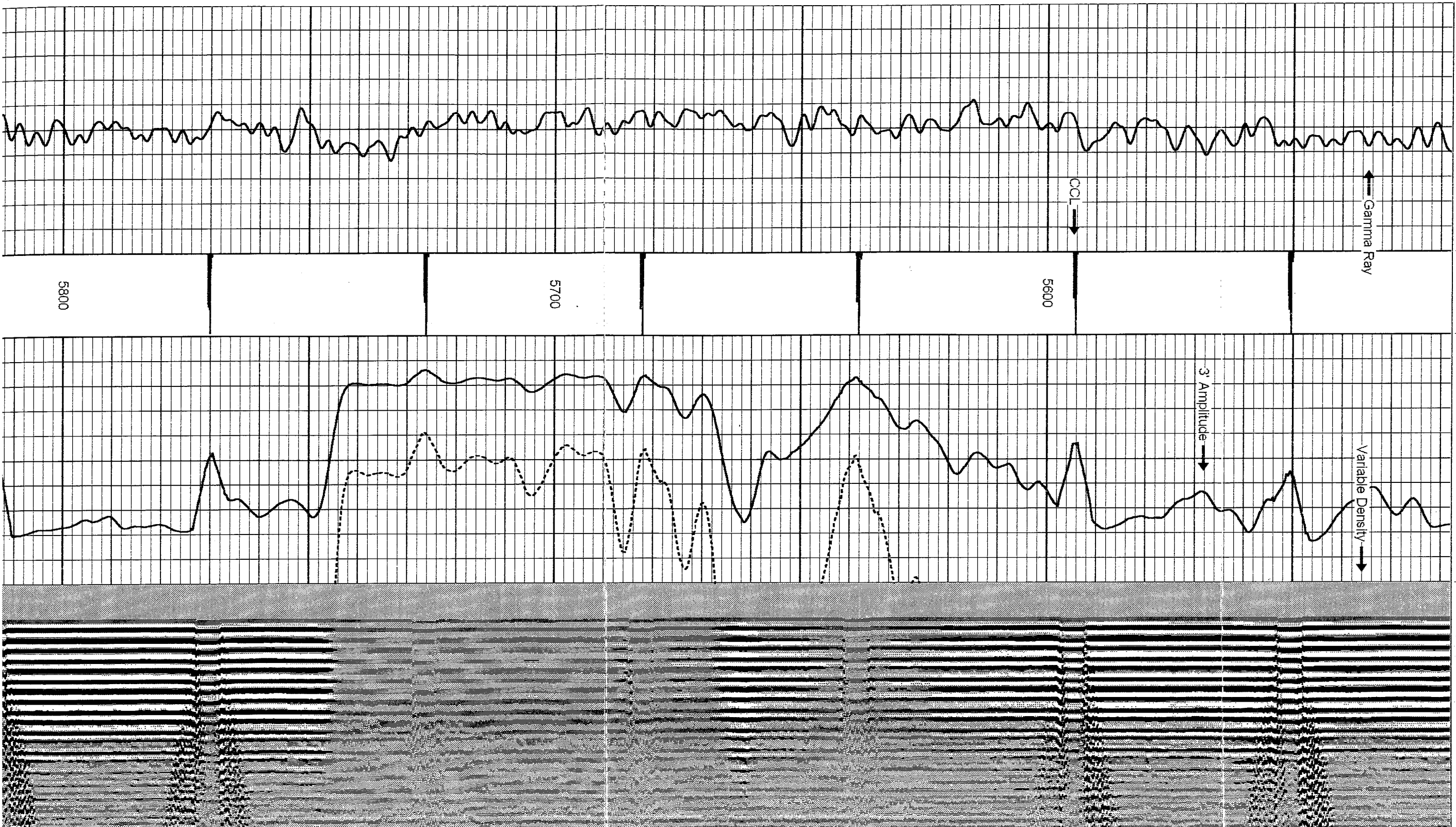
Database File: kpk15.db
Dataset Pathname: pass1
Presentation Format: cbk
Dataset Creation: Fri Feb 16 08:13:45 2007 by Log Warrior 7.0 STD Cas
Charted by: Depth in Feet scaled 1:240

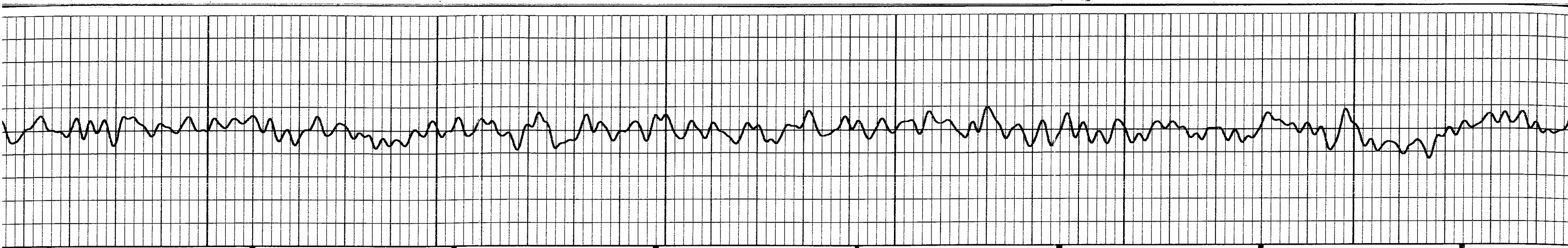


0	Gamma Ray (GAPI)	180	CCL	0	Amplitude (mV)	85	200	Variable Density	1200
-0.5		-3.5	0	Amplified Amplitude (mV)	30				

Database File: kpk15.db
 Dataset Pathname: pass1
 Presentation Format: cbix
 Dataset Creation: Fri Feb 16 08:13:45 2007 by Log Warrior 7.0 STD Cas
 Cherted by: Depth in Feet scaled 1:240

0	Gamma Ray (GAPI)	180	CCL	0	Amplitude (mV)	85	200	Variable Density	1200
-0.5		-3.5	0	Amplified Amplitude (mV)	30				

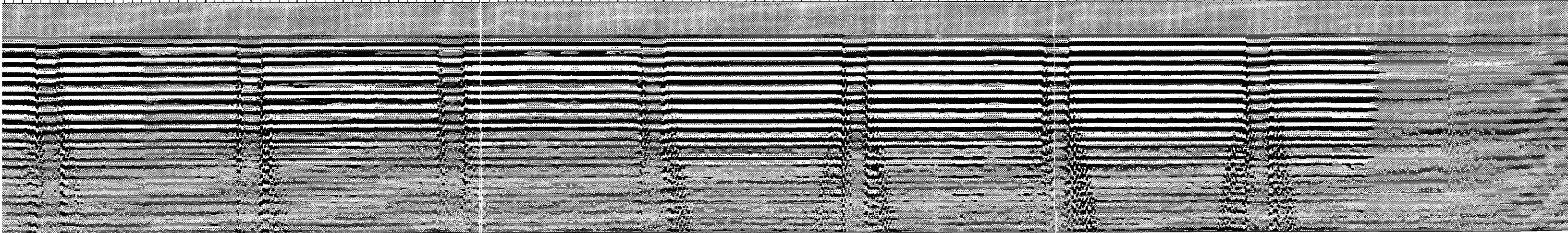
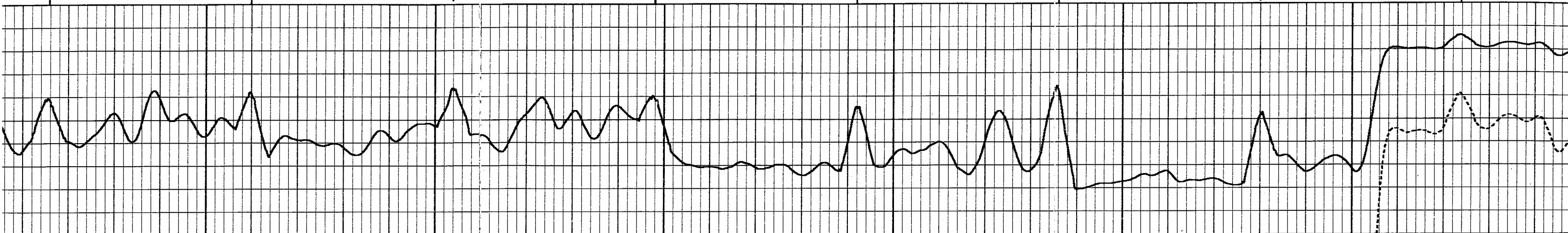


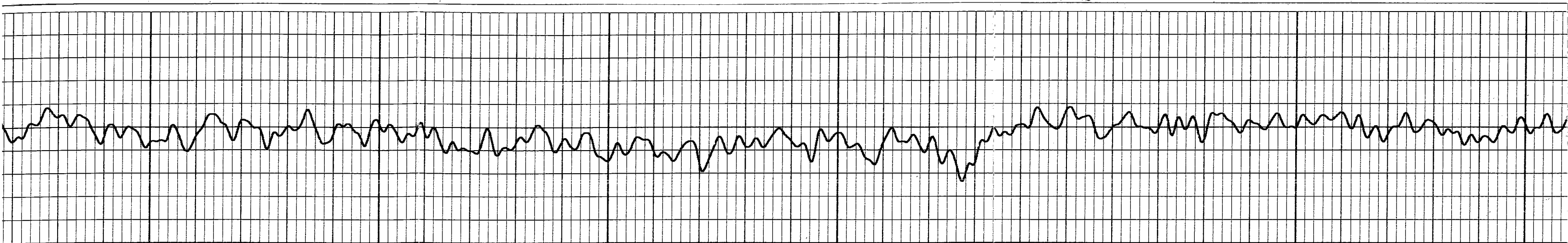


0000

5900

5800

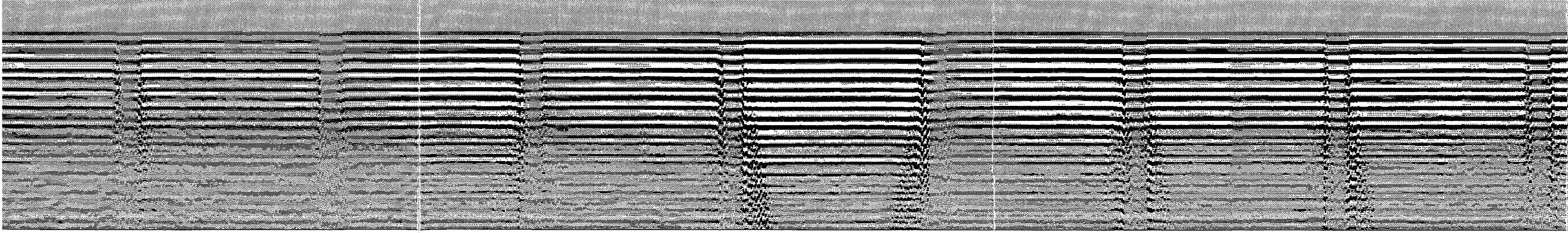
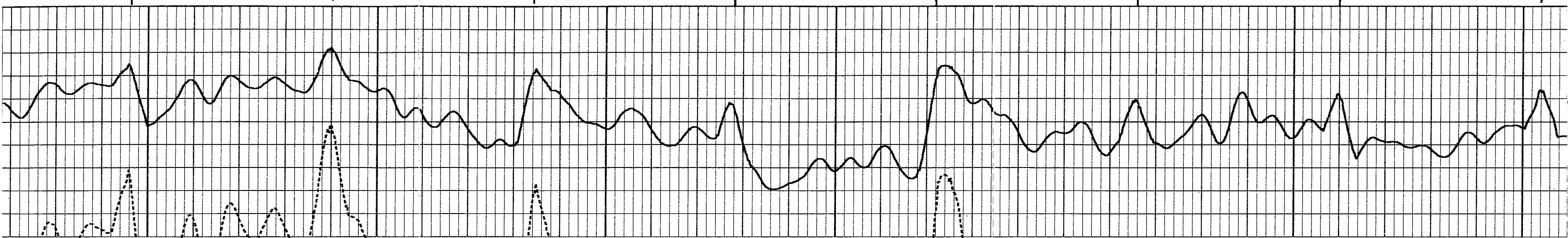


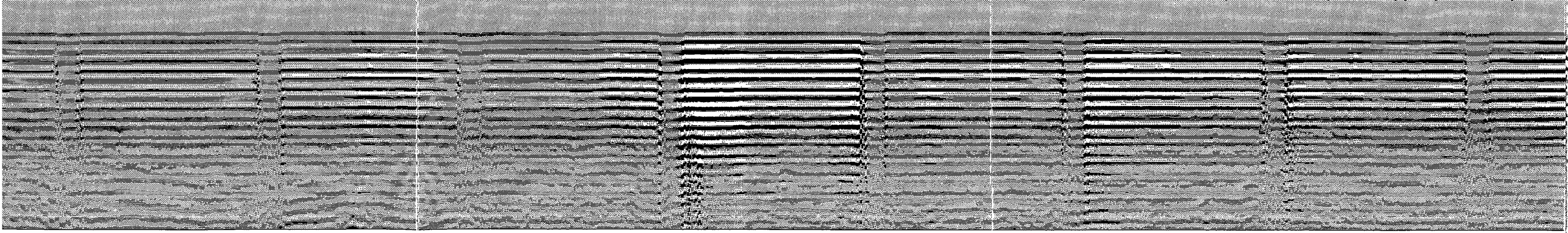
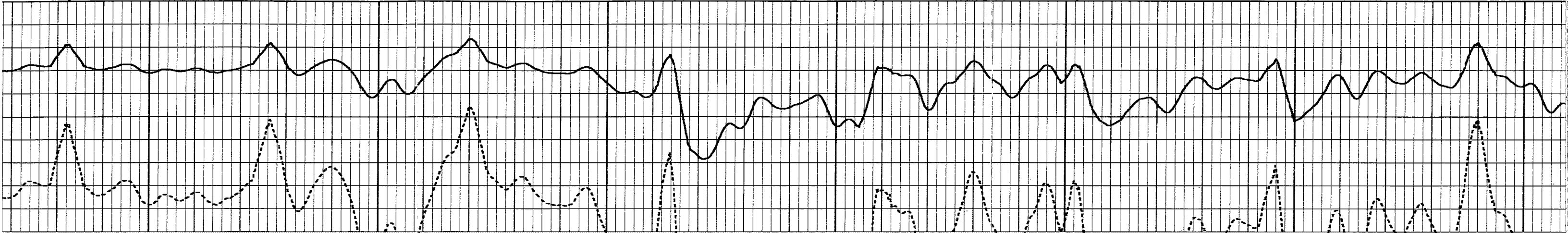
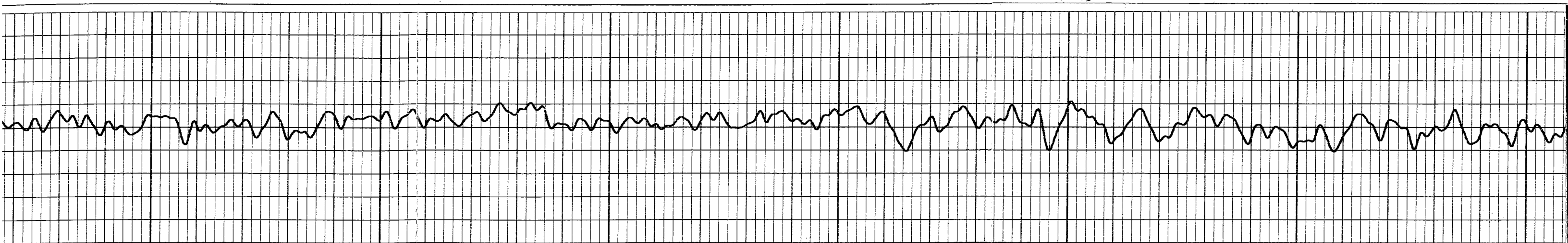


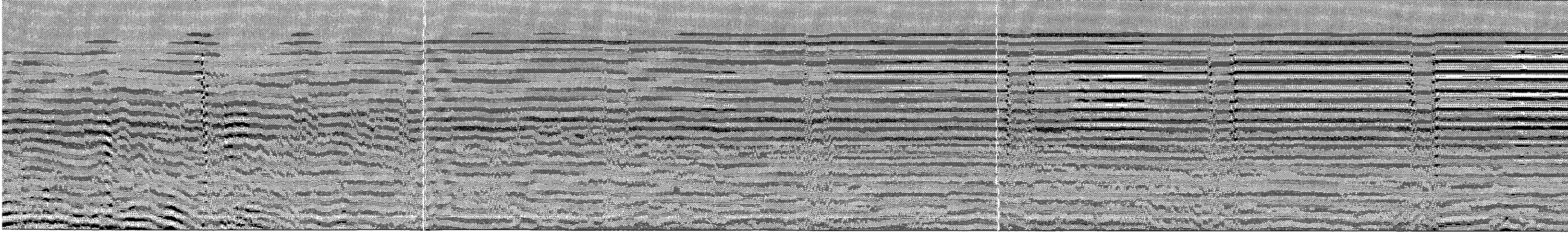
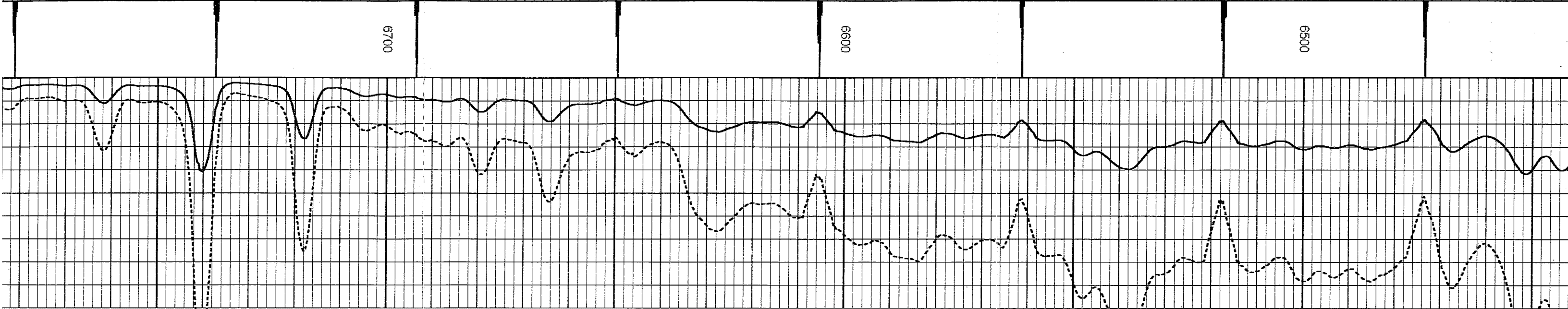
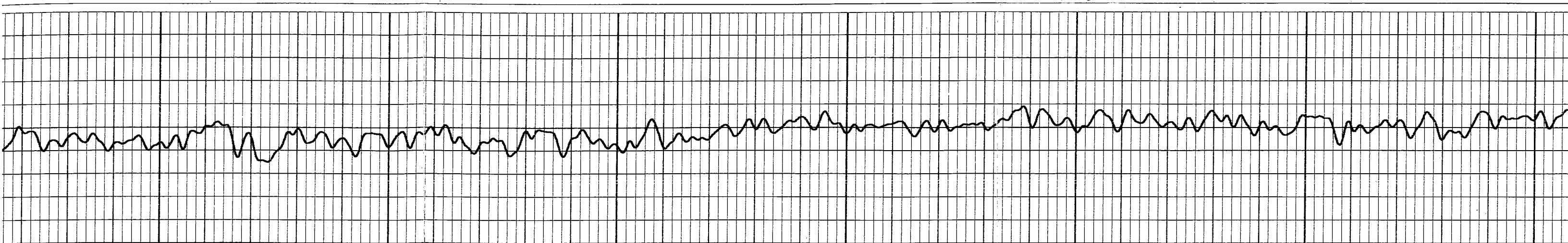
6200

6100

6000







6700

6600

6500

