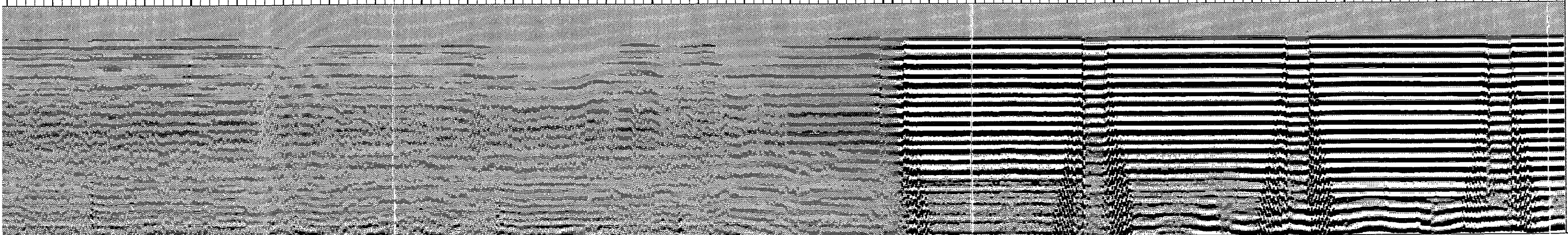
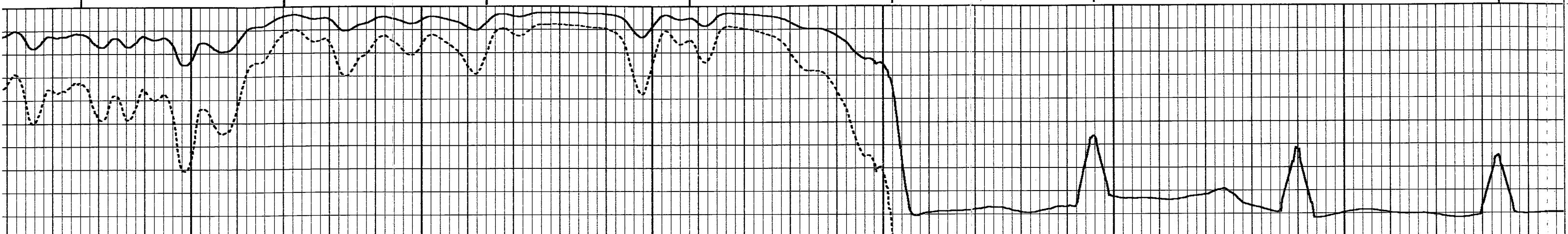
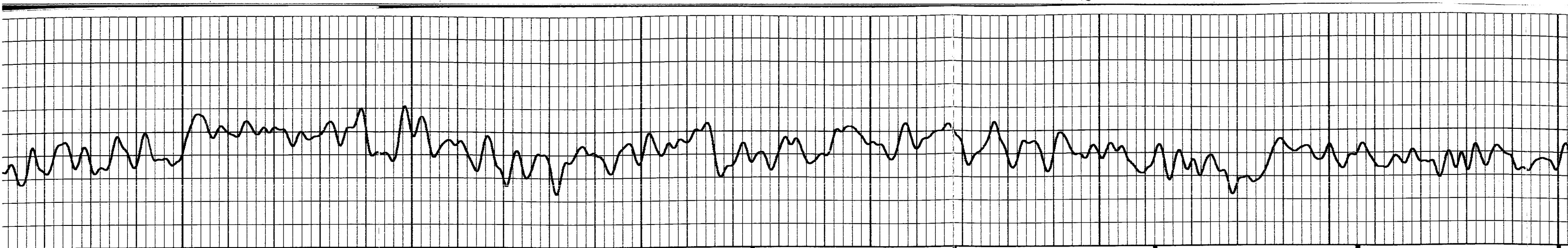


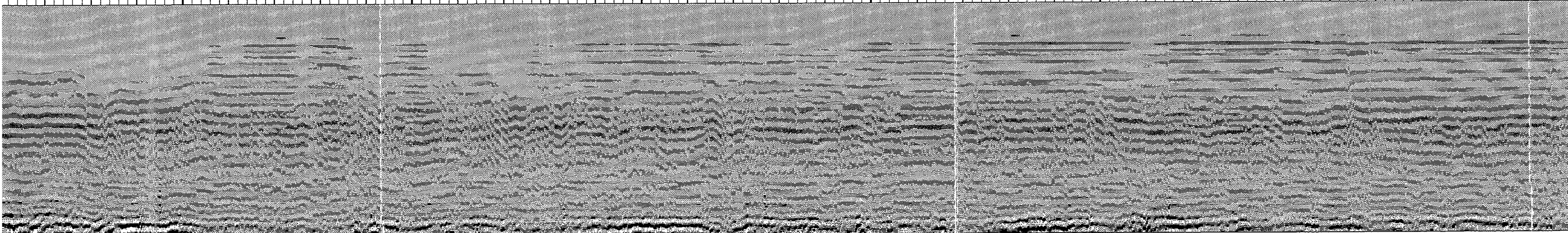
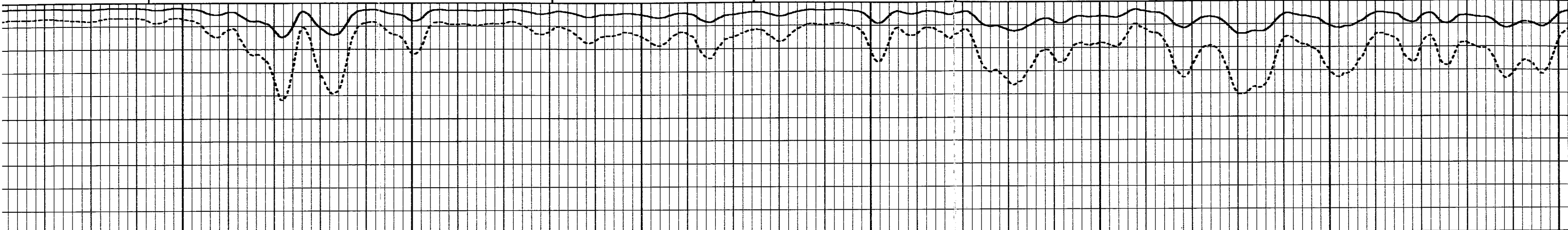
3800 3700 3600



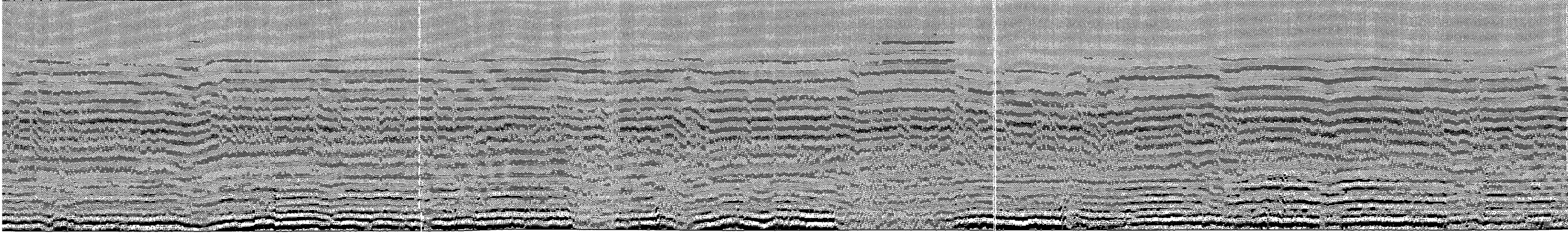
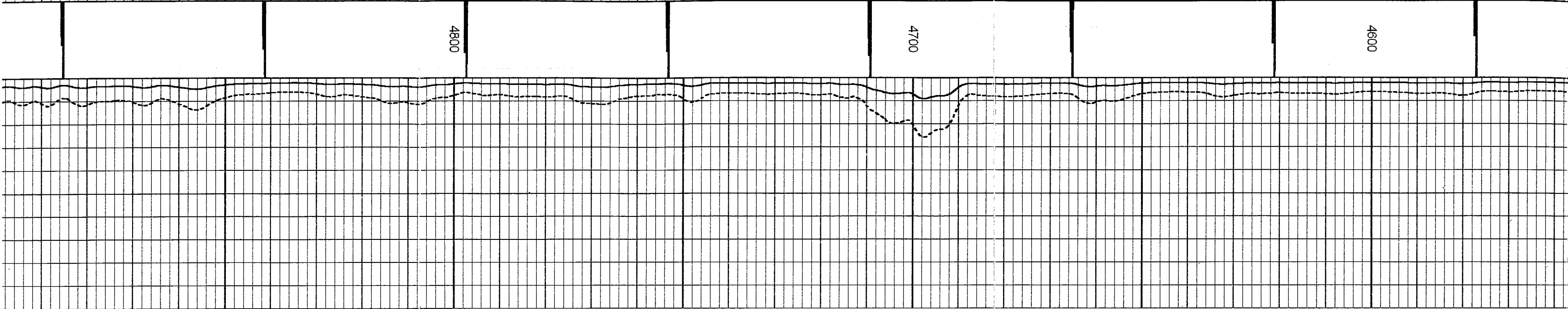
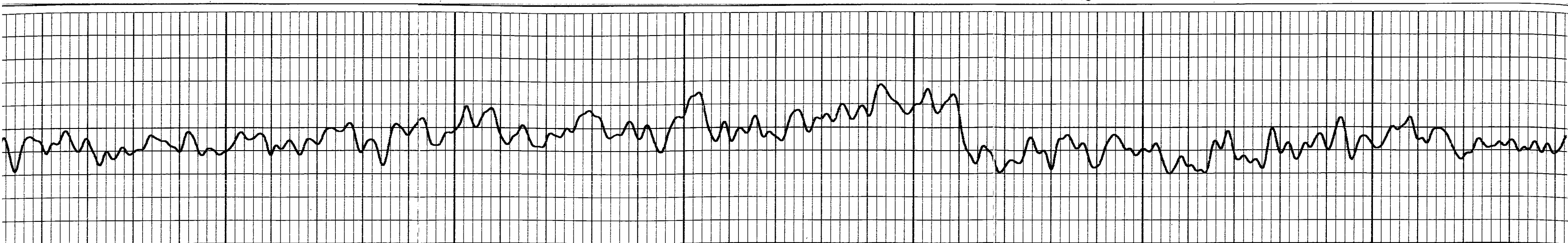




		4300		4200		4100	
--	--	------	--	------	--	------	--



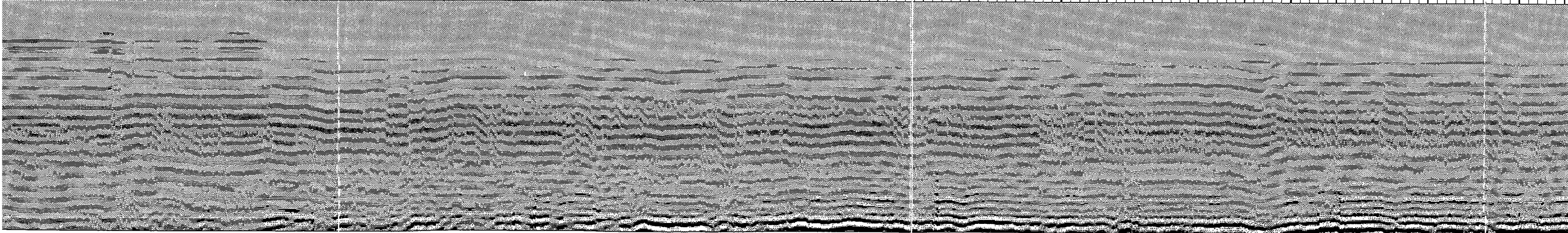
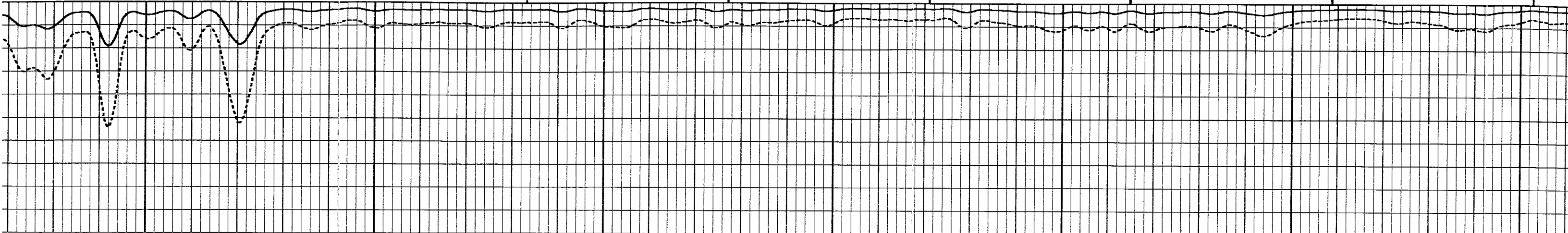
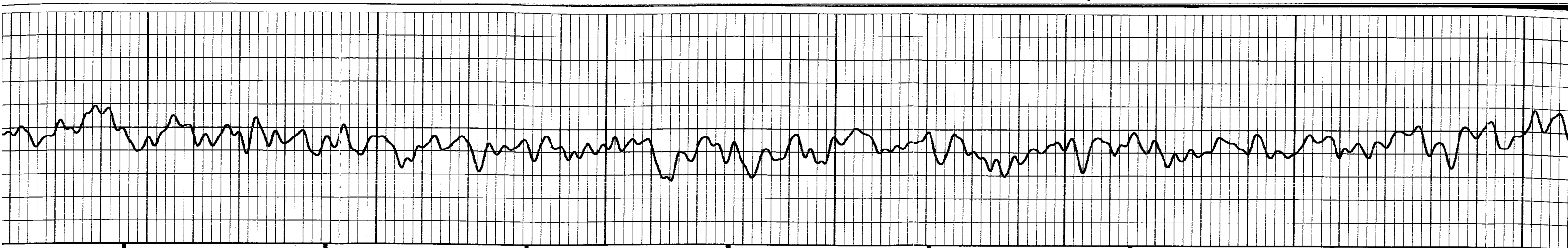


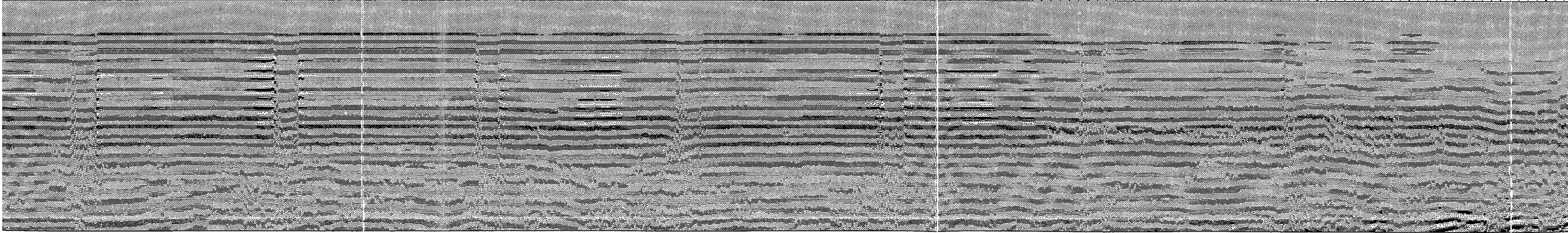
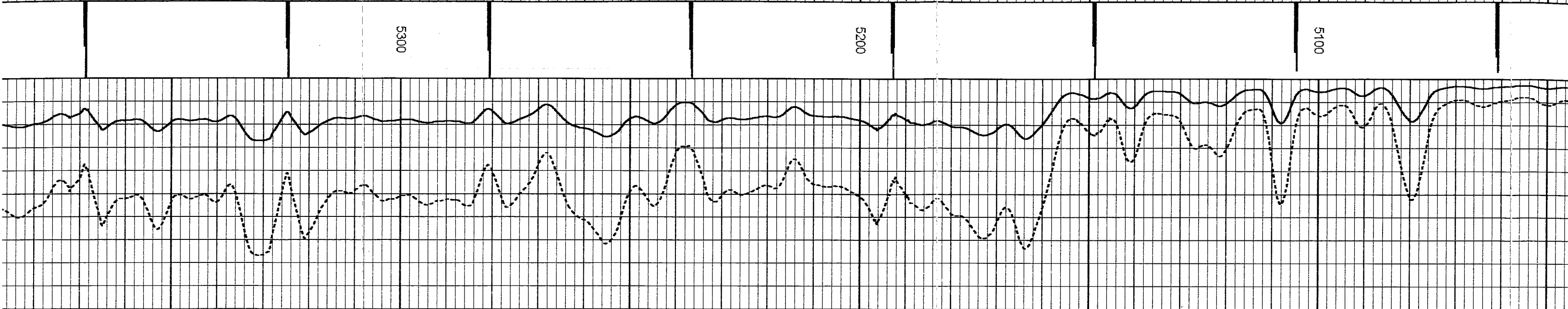


4800

4700

4600

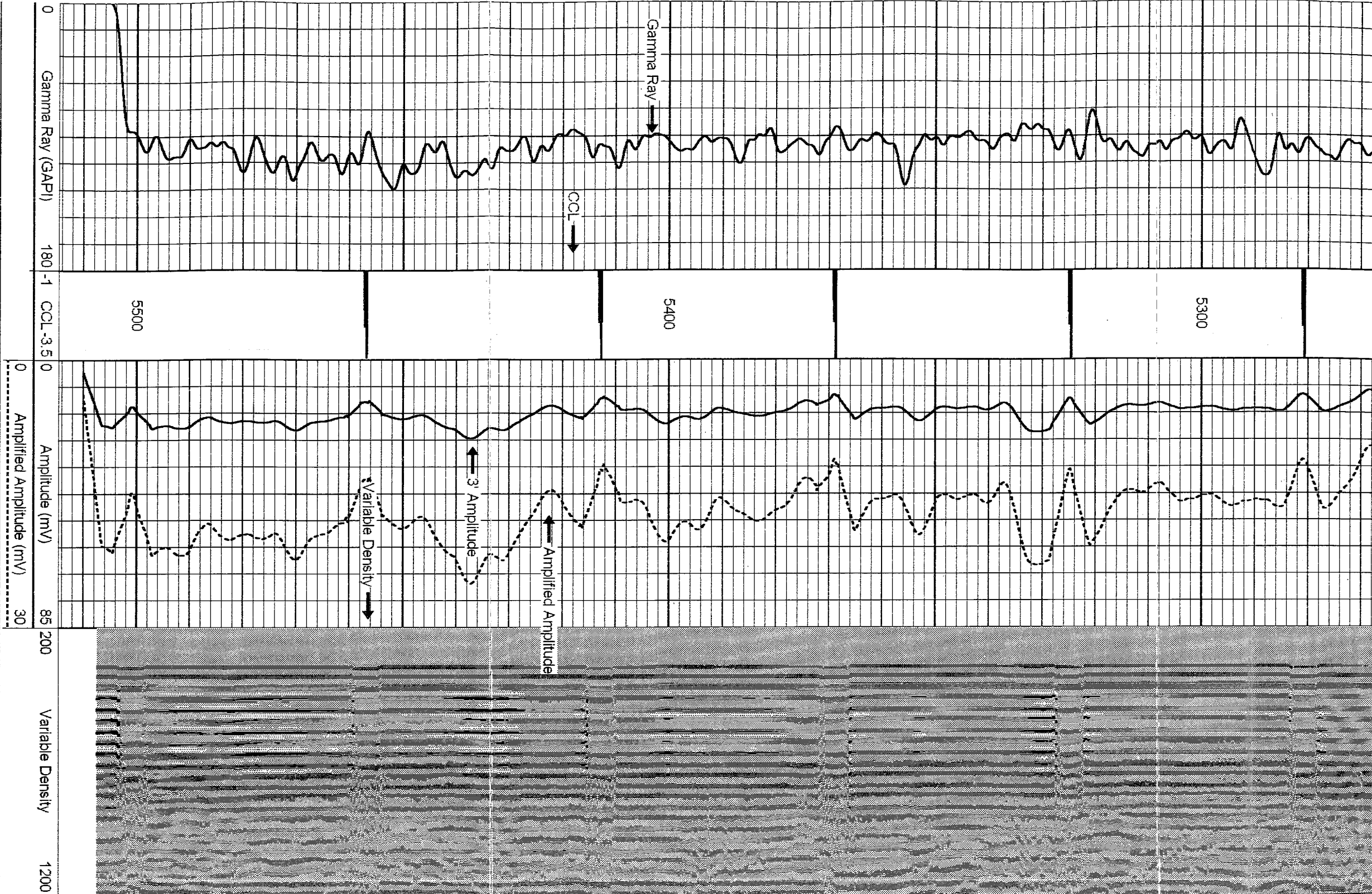




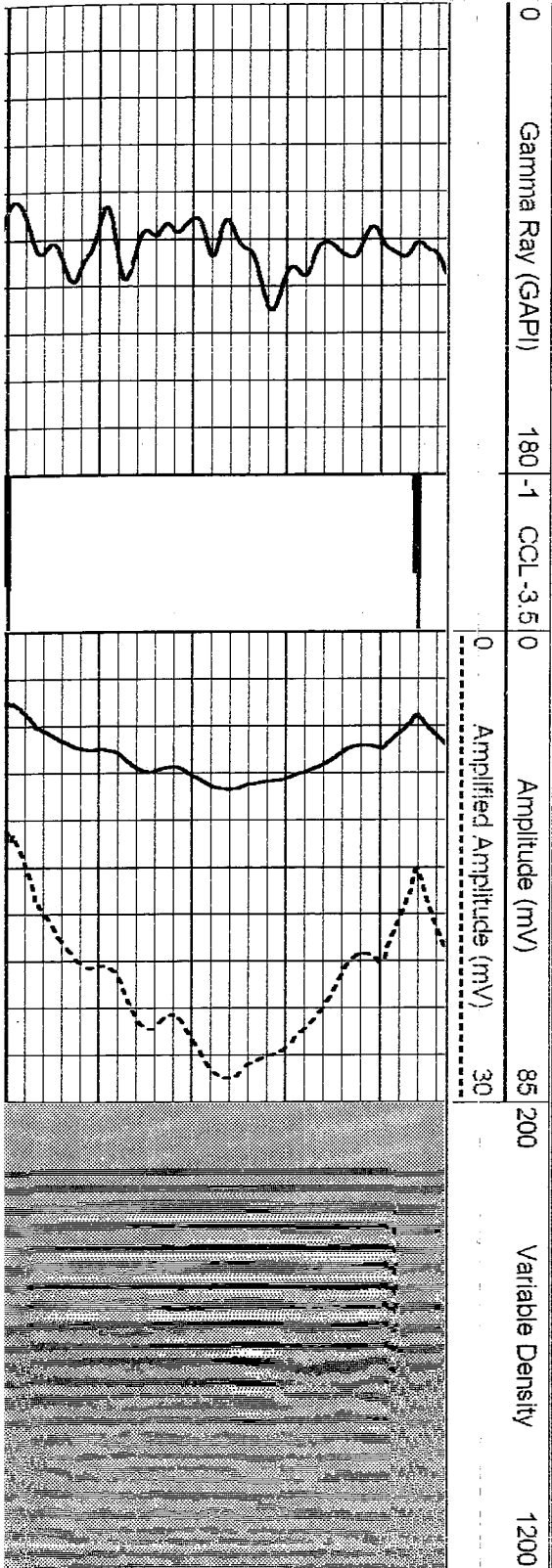
5300

5200

5100



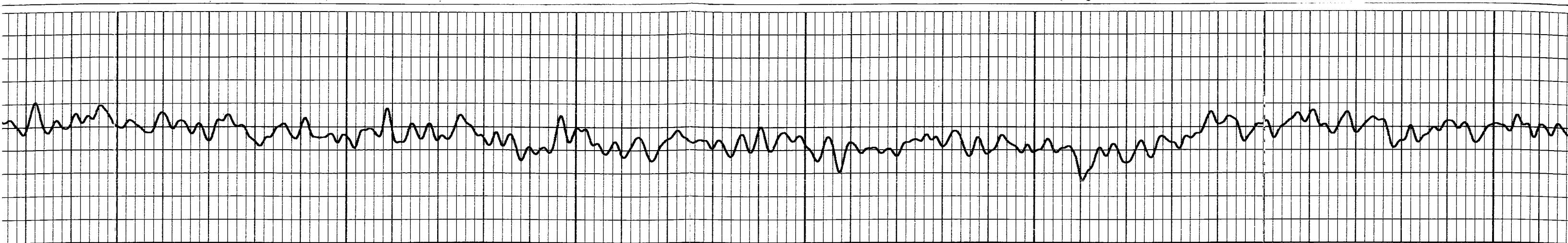
Database File: hepp32-6.db
Dataset Pathname: pass1
Presentation Format: cbk
Dataset Creation: Fri Feb 23 09:10:23 2007 by Log Warrior 7.0 STD Cas
Charted by: Depth in Feet scaled 1:240



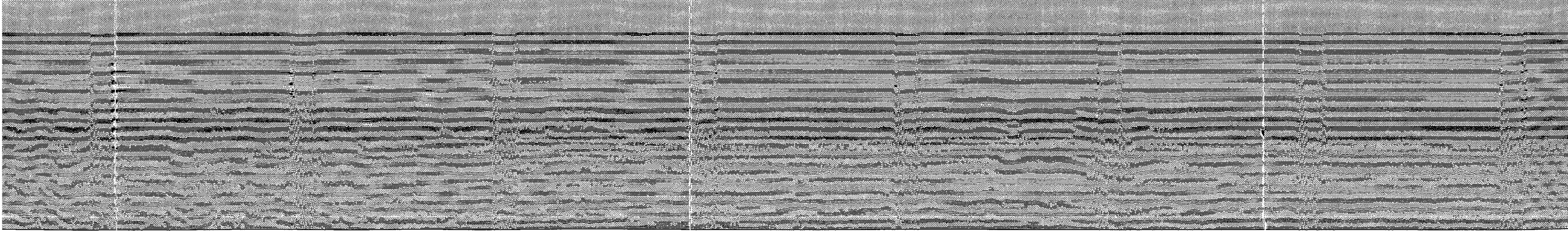
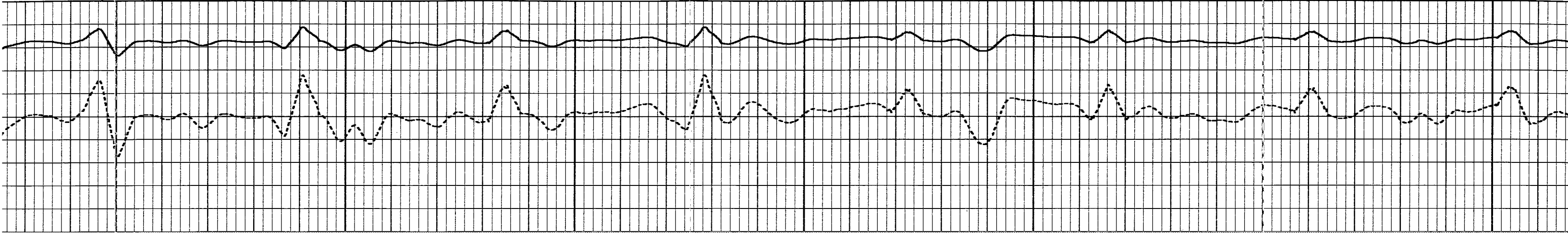
Database File: hepp32-6.db
Dataset Pathname: pass1
Presentation Format: cbx
Dataset Creation: Fri Feb 23 09:10:23 2007 by Log Warrior 7.0 STD Cas
Charted by: Depth in Feet scaled 1.240

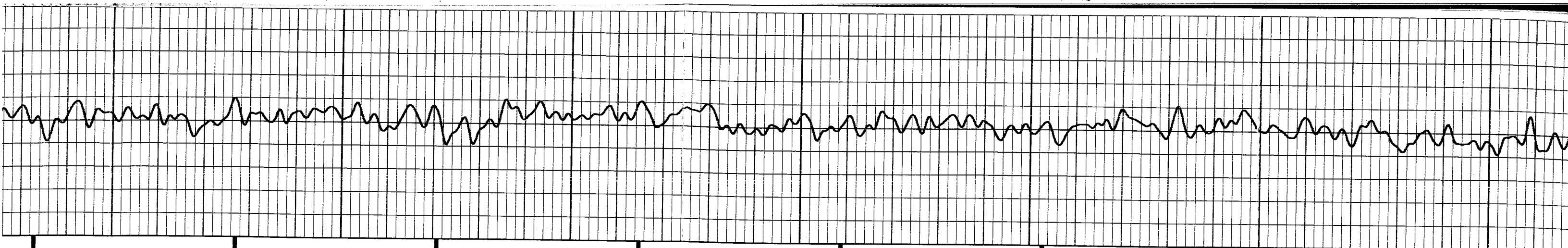






		6200		6100		6000	
--	--	------	--	------	--	------	--



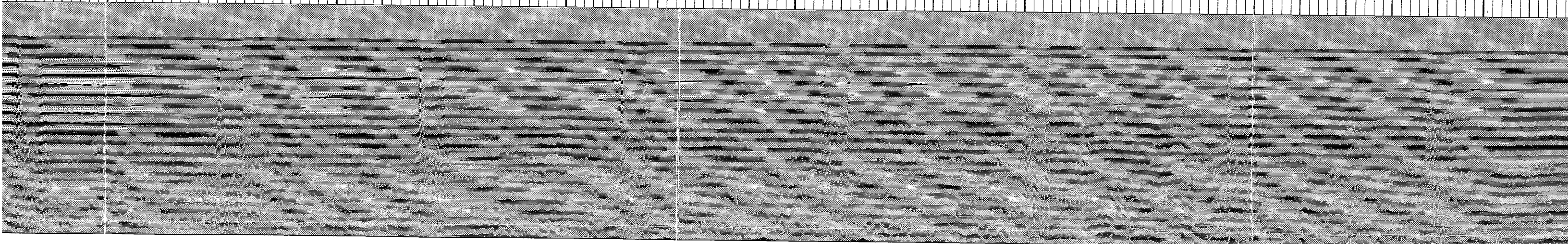
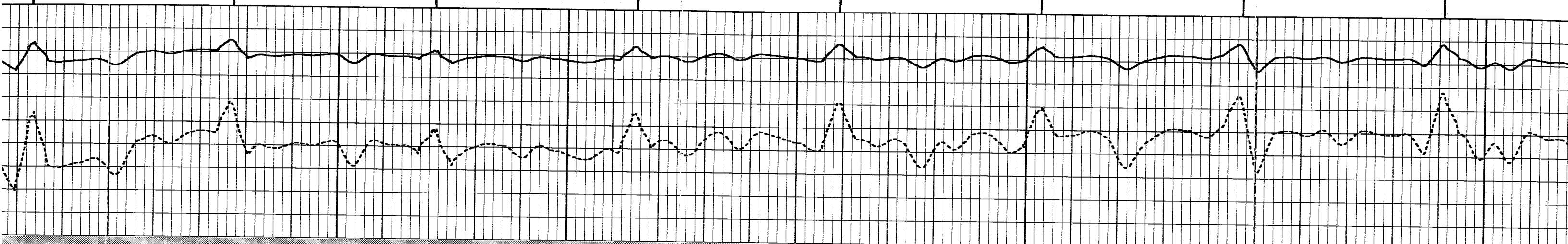


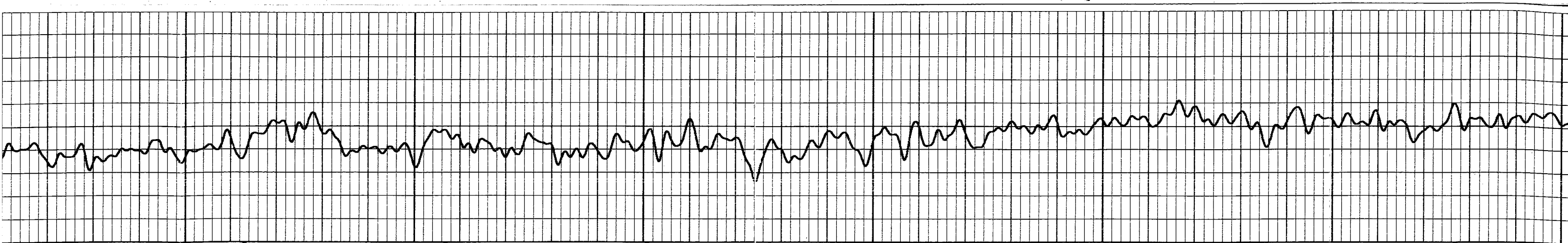
6500

6400

6300

6200

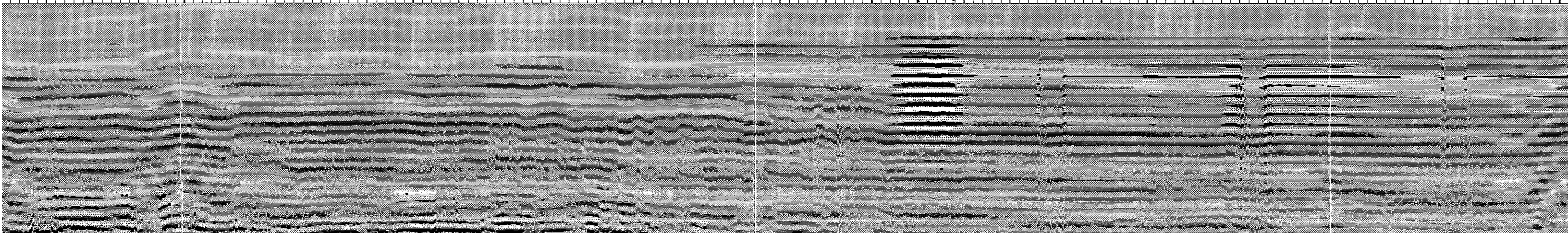


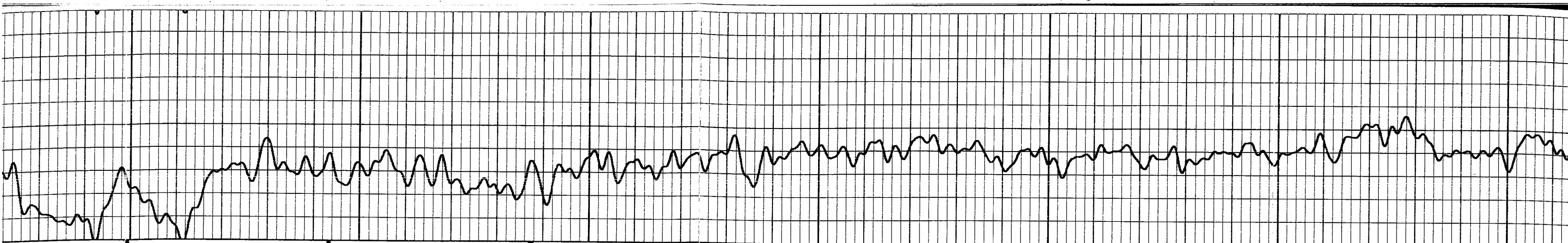


6700

6600

6500





7000

6900

6800

6700

