



SUPERIOR
WELL SERVICES
Black Lick, Pa.
Mercer, Pa.
Wooster, Oh.
Cleveland, Ok.
Trinidad, Co.

CEMENT BOND LOG

Company Pioneer Natural Resources
Well E Budd 24-33
Field Purgatorie River
County Las Animas State CO

Location: API # : 05 071 0962800

597' FSL & 1368' FWL

SEC 33 TWP 31S RGE 65W

Permanent Datum Ground level Elevation 8038'
Log Measured From Kelly Bushing 9' Above G.L.
Drilling Measured From Kelly Bushing

Elevation
K.B. 8053'
D.F. -----
G.L. 8038'

Date 08-13-08

Run Number	One		
Depth Driller	1760'		
Depth Logger	1726'		
Bottom Logged Interval	1725'		
Top Log Interval	Surface		
Open Hole Size	7 7/8"		
Type Fluid	Water		
Density / Viscosity	///		
Max. Recorded Temp.	110		
Estimated Cement Top	234'		
Time Well Ready	Portable Mast		
Time Logger on Bottom	9:30 a.m.		
Equipment Number	1996		
Location	Trinidad		
Recorded By	A. Armijo		
Witnessed By			

Borehole Record				Tubing Record			
Run Number	Bit	From	To	Size	Weight	From	To

Casing Record	Size	Wgt/Ft	Top	Bottom
Surface String	8 5/8"		00	358'
Prot. String				
Production String	5 1/2"		00	NA
Liner				

<<< Fold Here >>>

All interpretations are opinions based on inferences from electrical or other measurements and we cannot and do not guarantee the accuracy or correctness of any interpretation, and we shall not, except in the case of gross or willful negligence on our part, be liable or responsible for any loss, costs, damages, or expenses incurred or sustained by anyone resulting from any interpretation made by any of our officers, agents or employees. These interpretations are also subject to our general terms and conditions set out in our current Price Schedule.

Comments

Riley canyon 2nd right after Zellie's Ranch 1st right left at Y to location



SUPERIOR
Black Lick, Pa.
Mercer, Pa.
Wooster, Oh.
Cleveland, Ok.
Trinidad, Co.

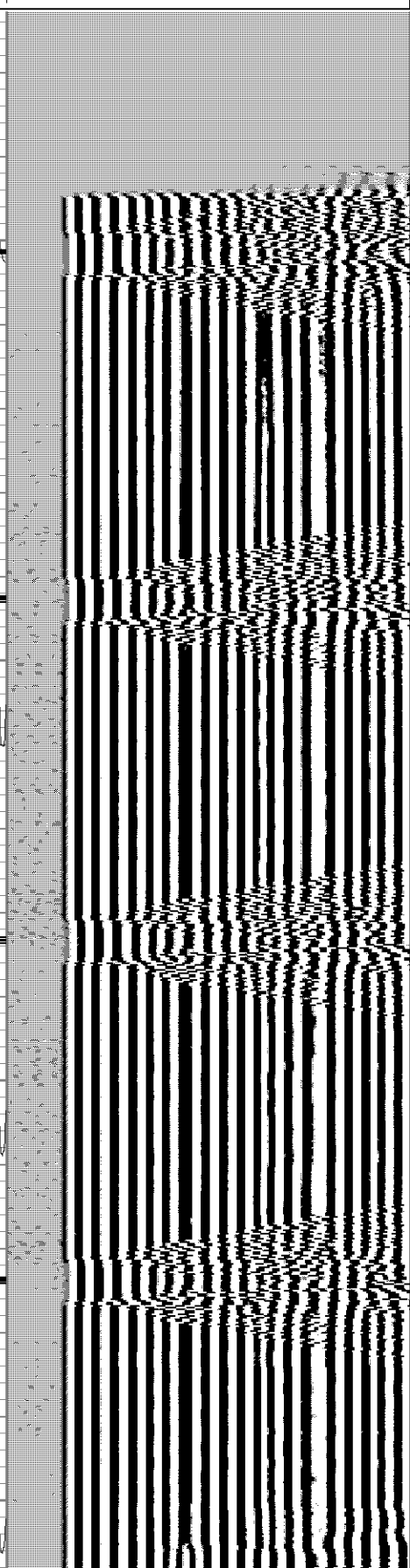
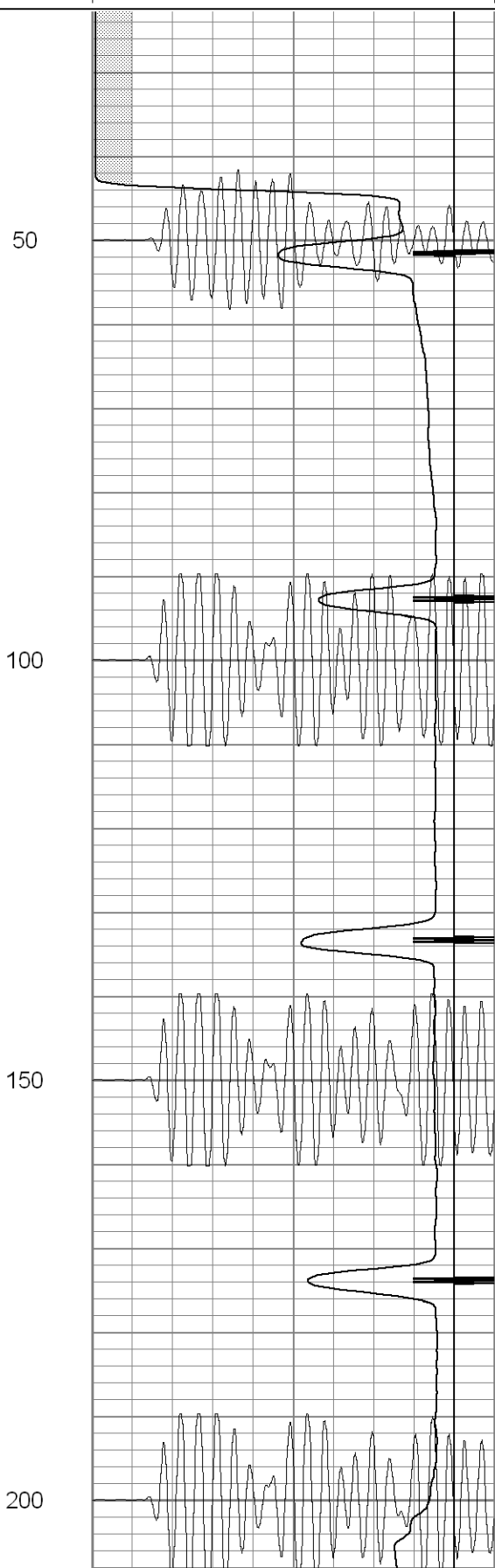
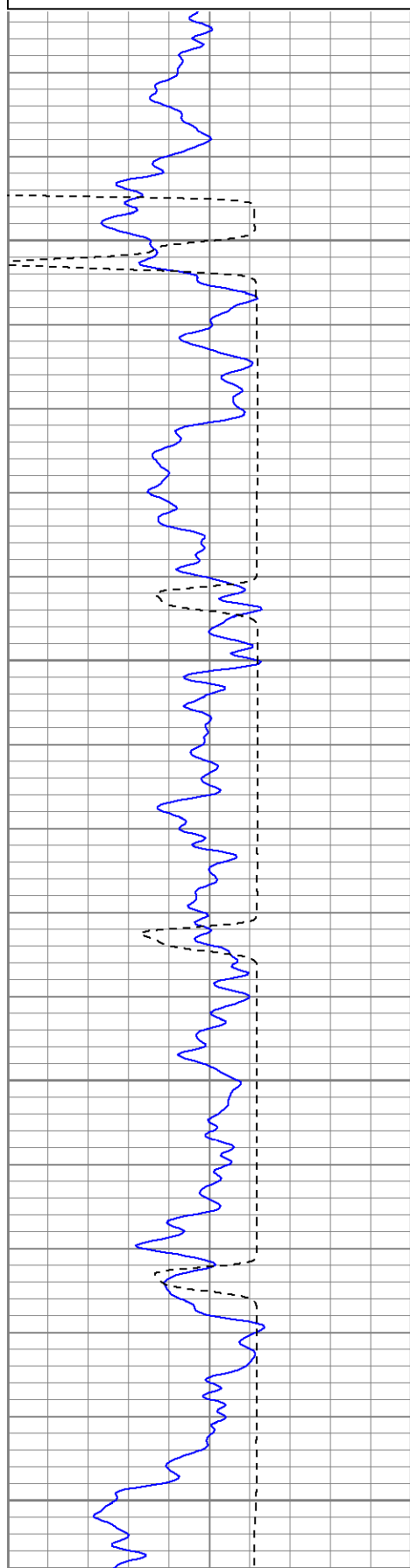
Main Pass

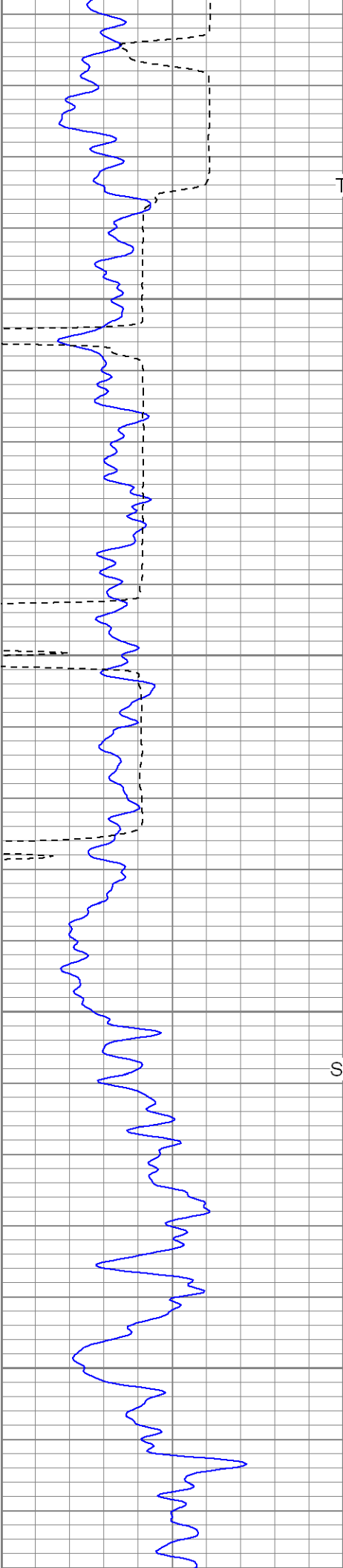
Database File: ebudd081308b.db
Dataset Pathname: pass2
Presentation Format: cblrt
Dataset Creation: Wed Aug 13 10:11:53 2008 by Log Open-Cased 071220
Charted by: Depth in Feet scaled 1:240

0	GR (GAPI)	200
400	TT3 (usec)	200

0	AMP3 (mV)	100
18	CCL	-2
200	CBL5	1200

200	Variable Density	1200
-----	------------------	------





Top of Cement

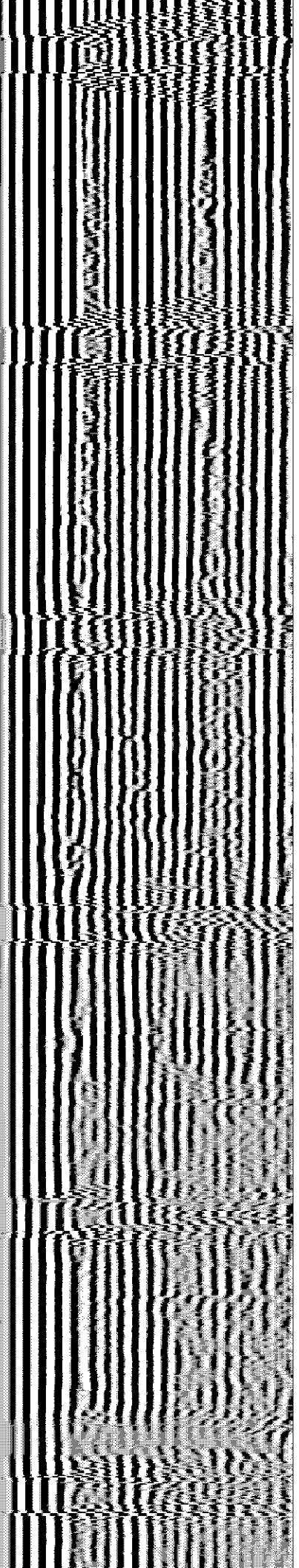
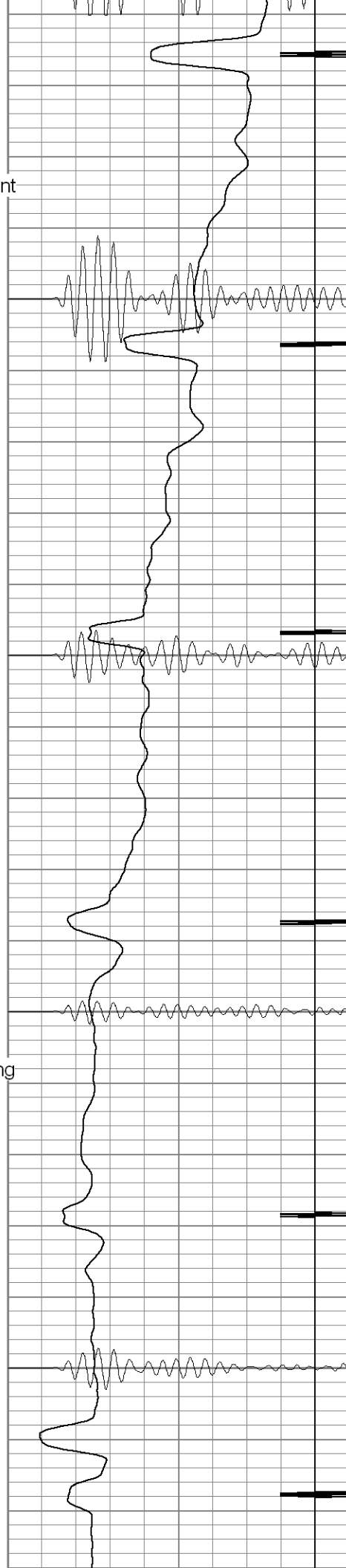
250

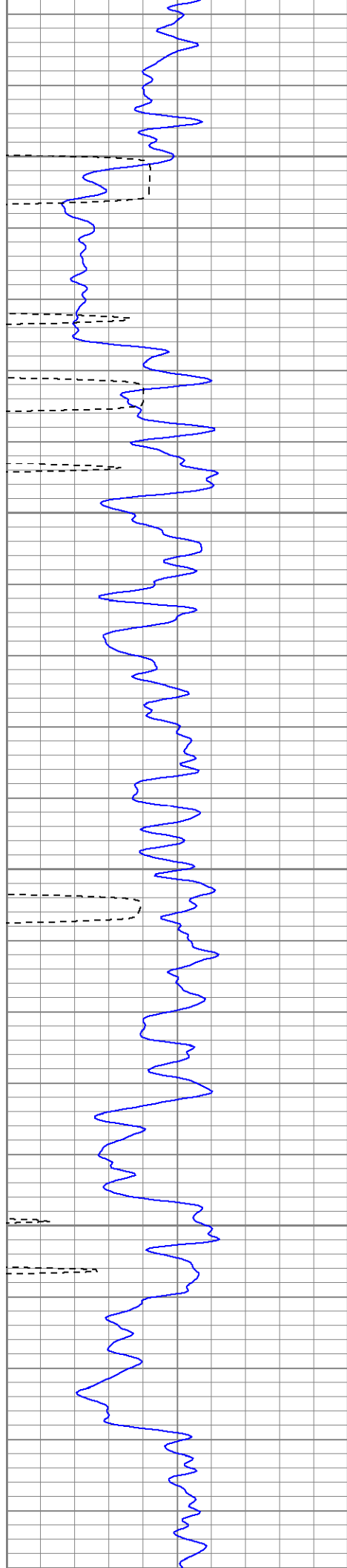
300

350

Surface Casing

400



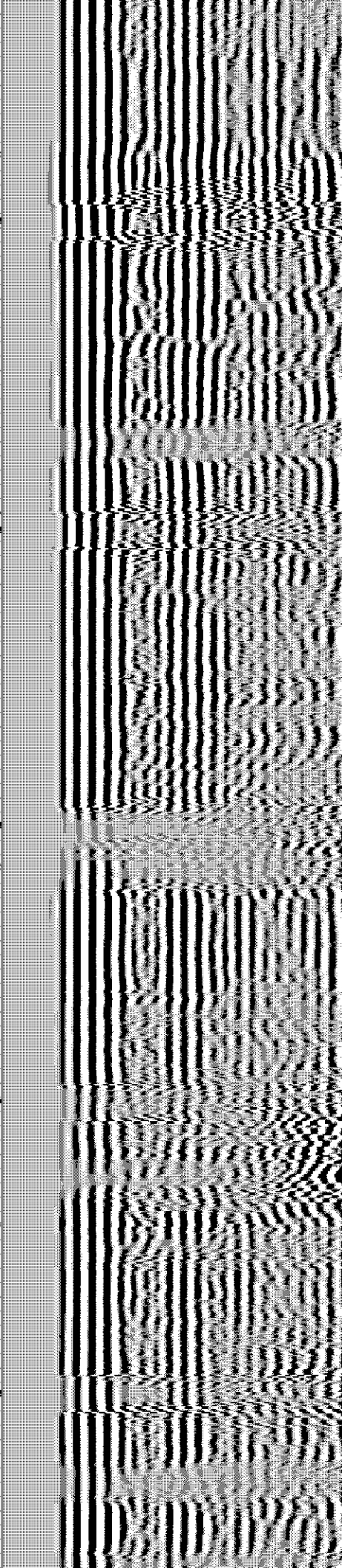
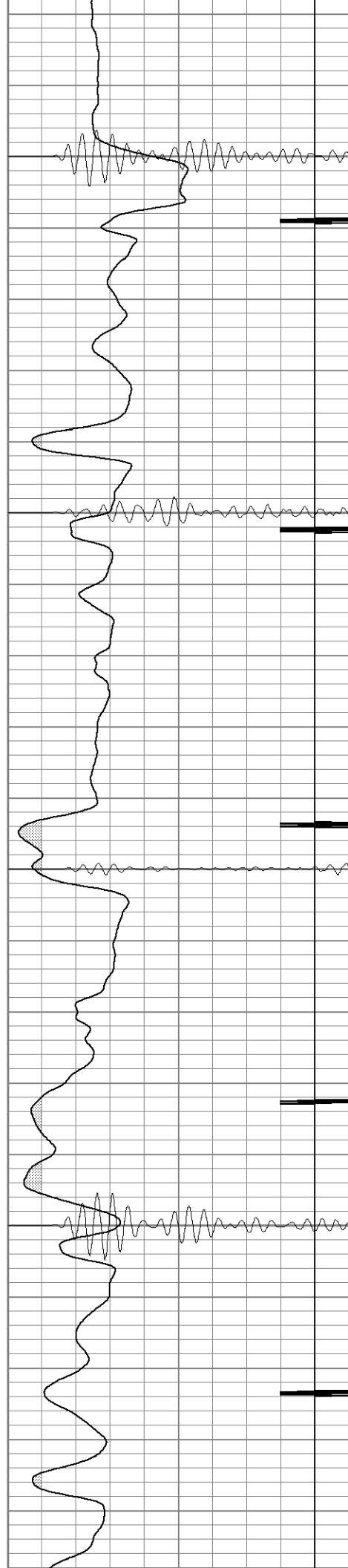


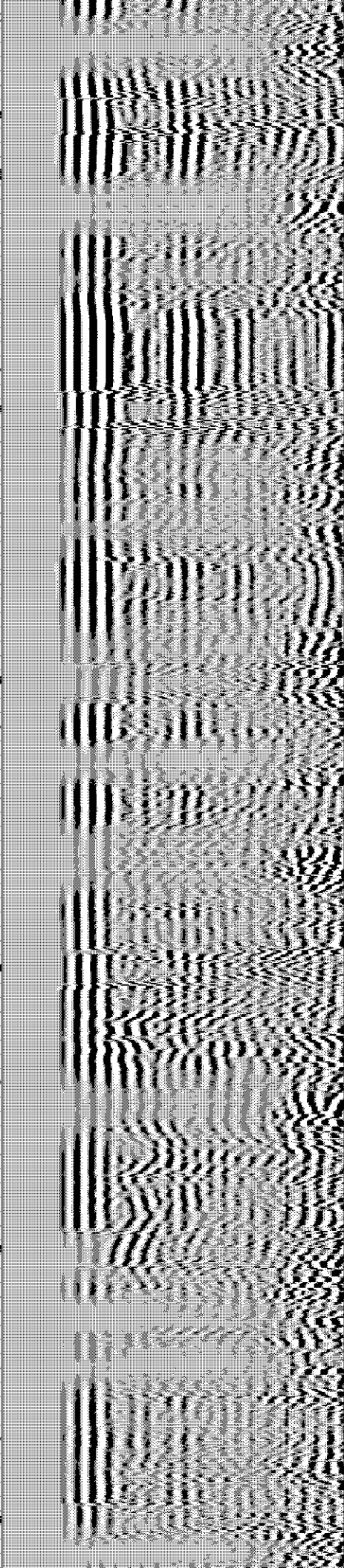
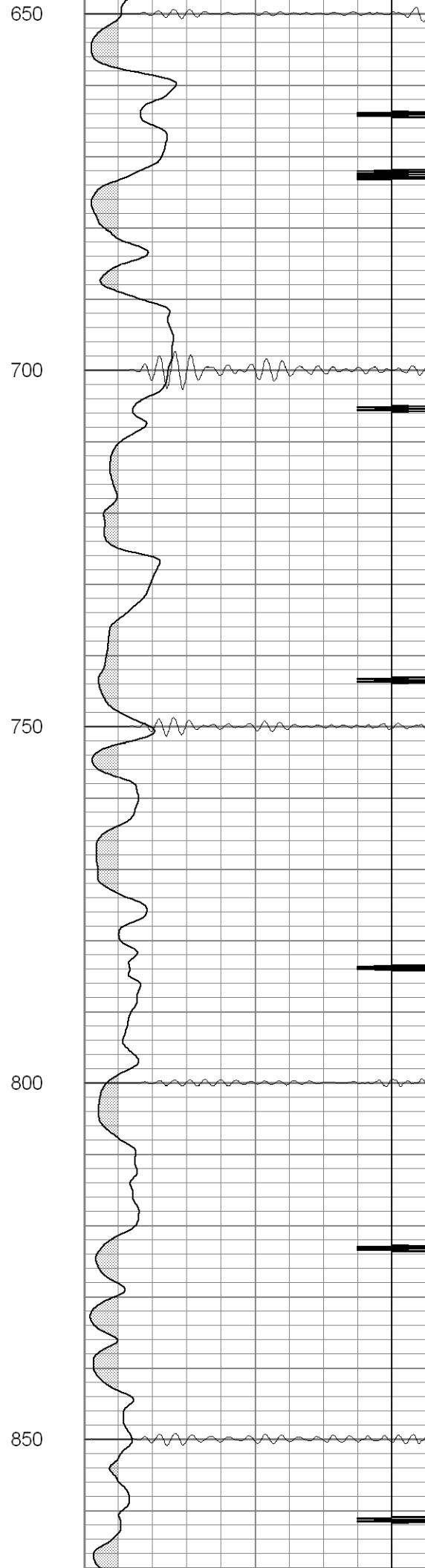
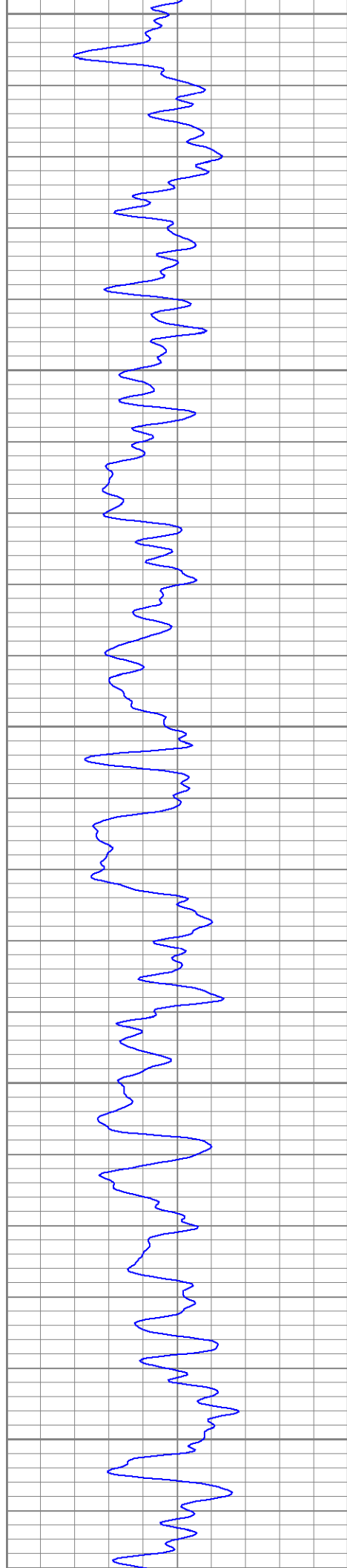
450

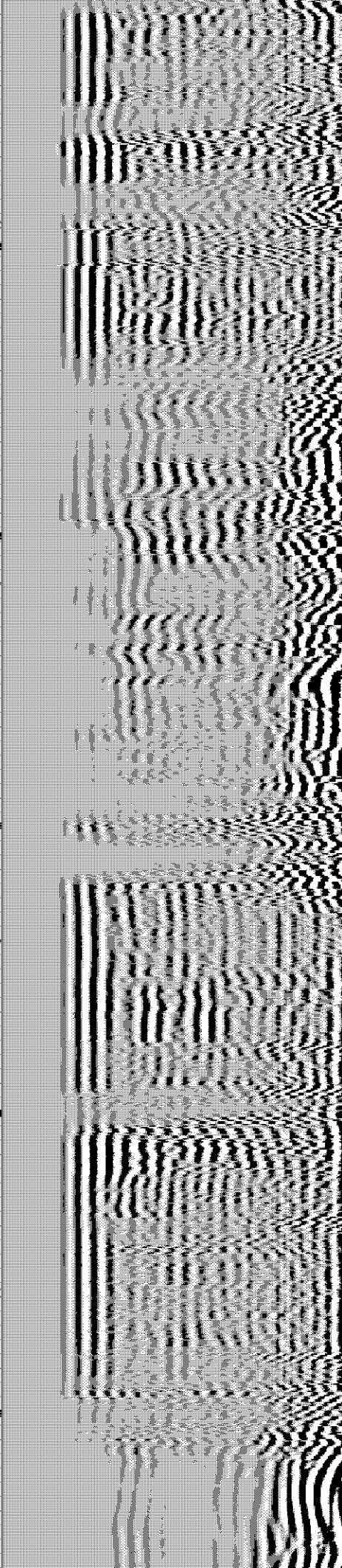
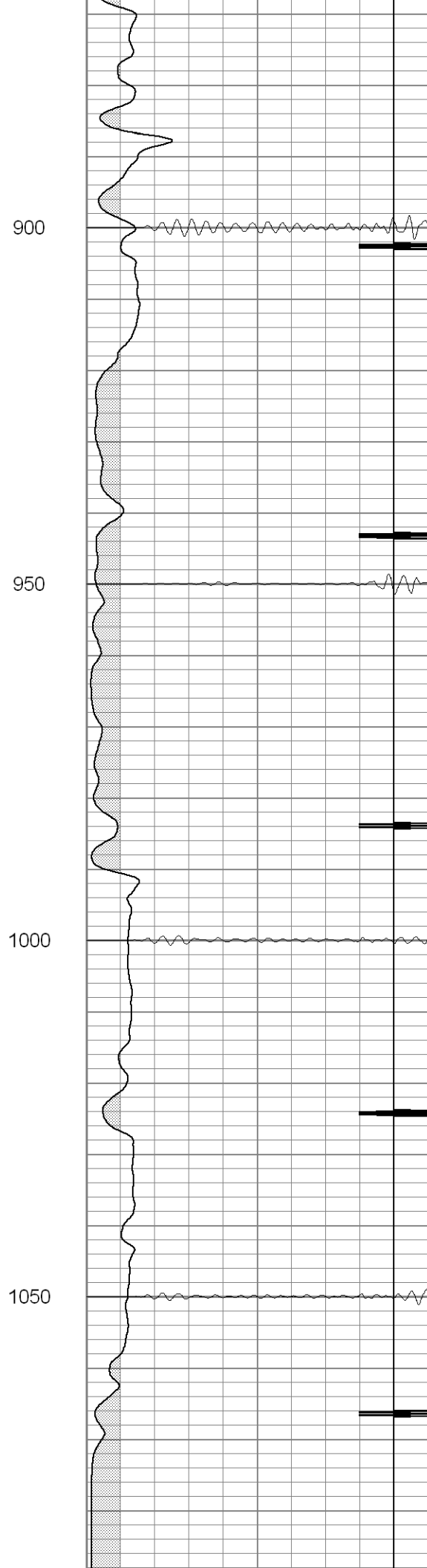
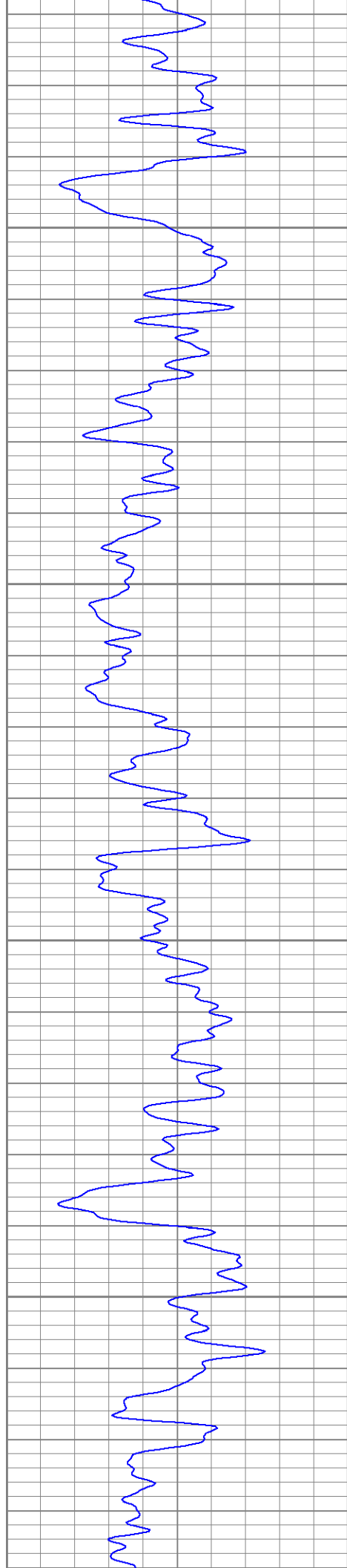
500

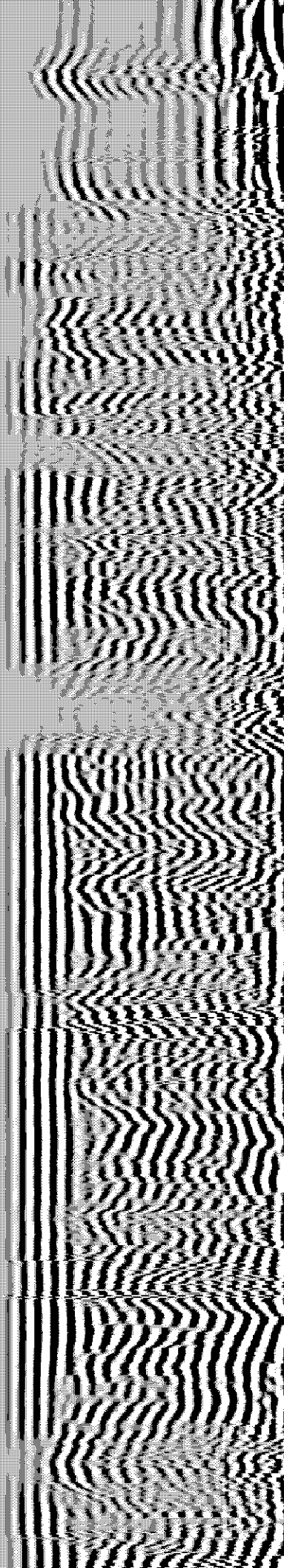
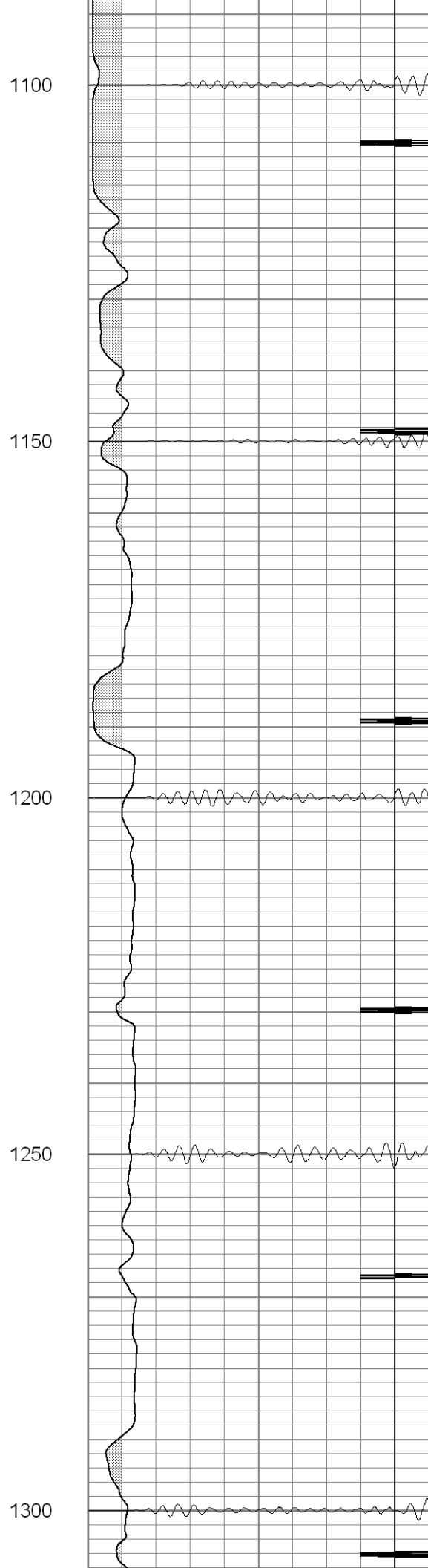
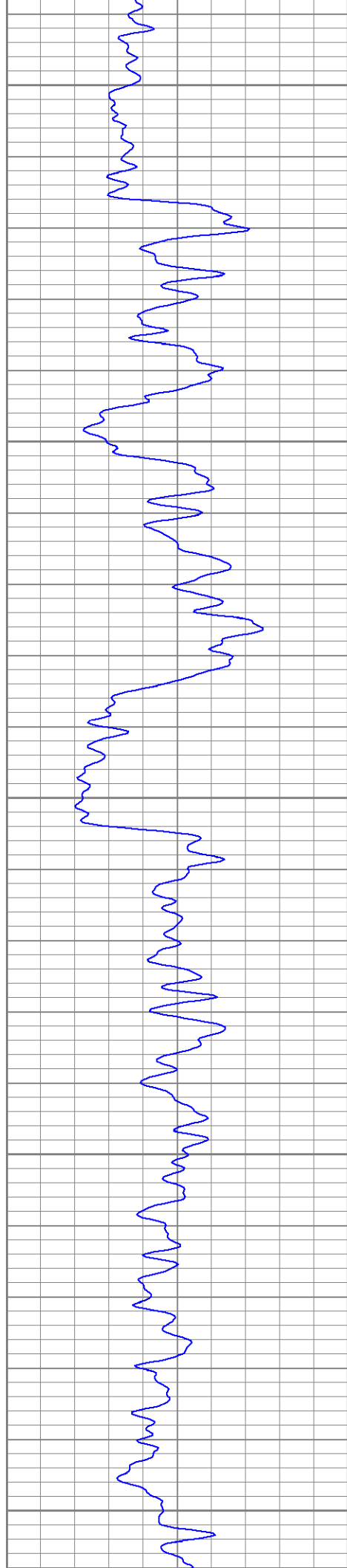
550

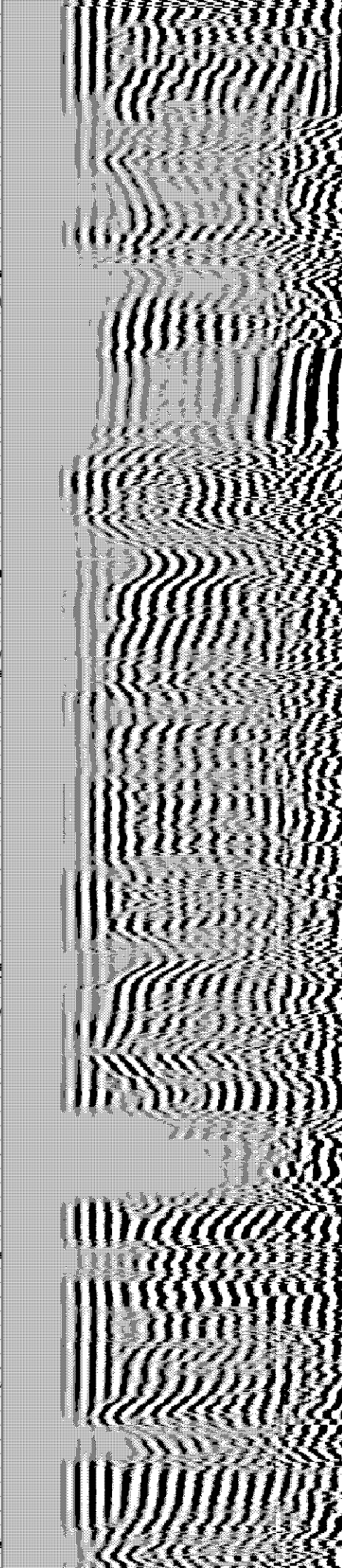
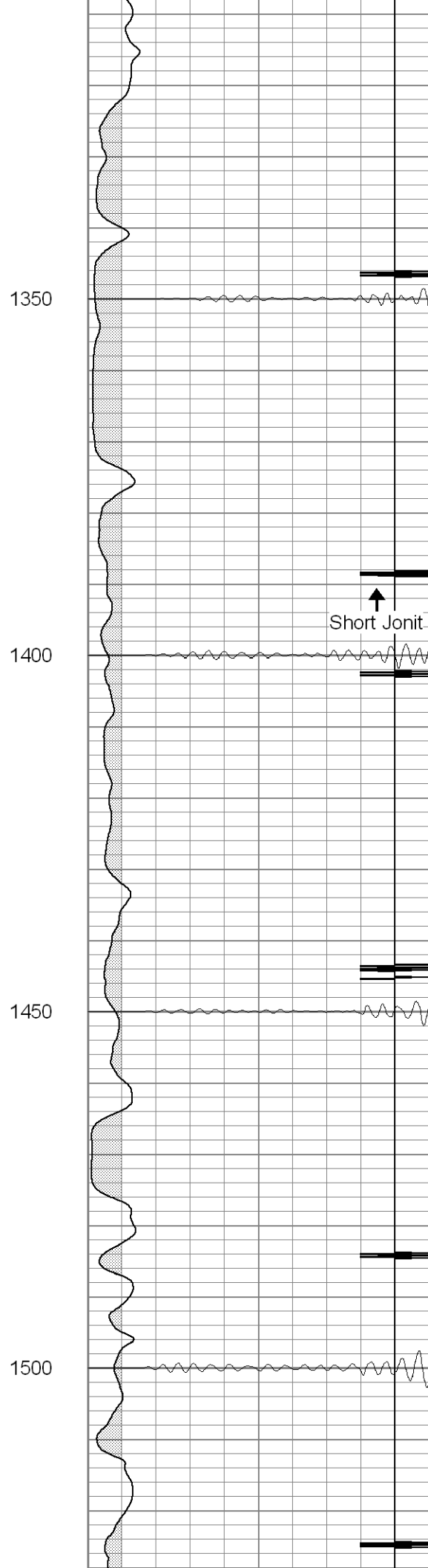
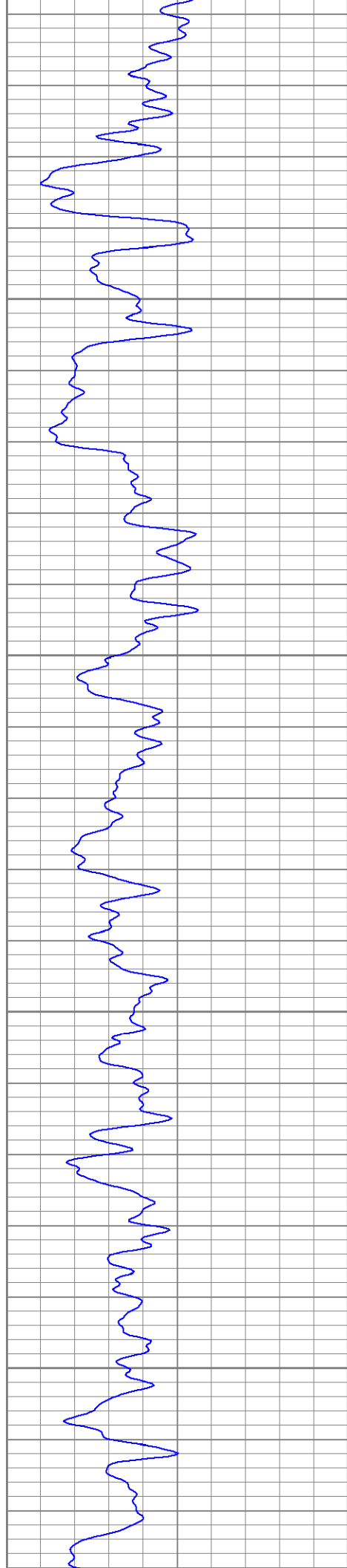
600

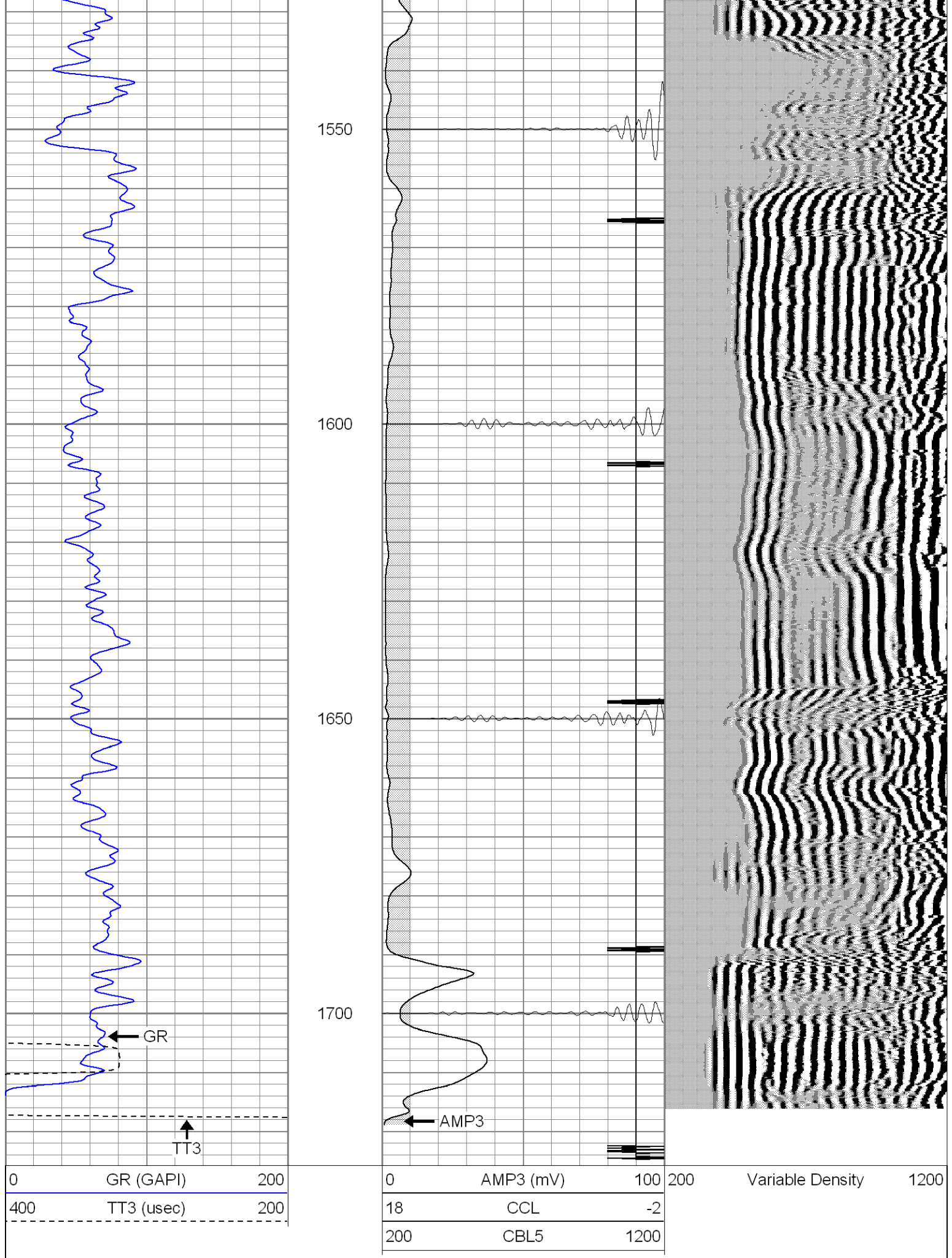












Black Lick, Pa.
Mercer, Pa.
Wooster, Oh.
Cleveland, Ok.
Trinidad, Co.

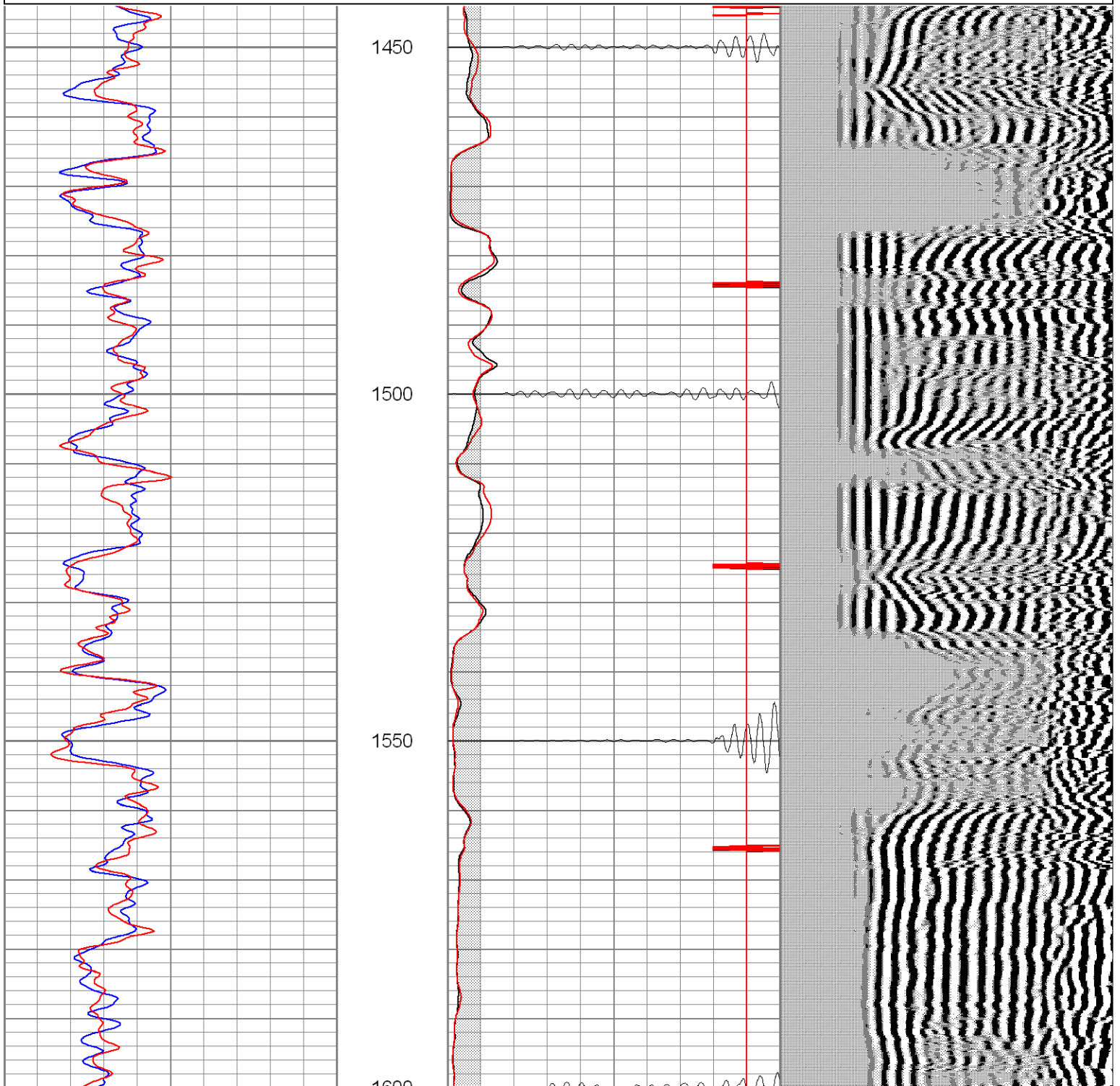
Repeat Pass

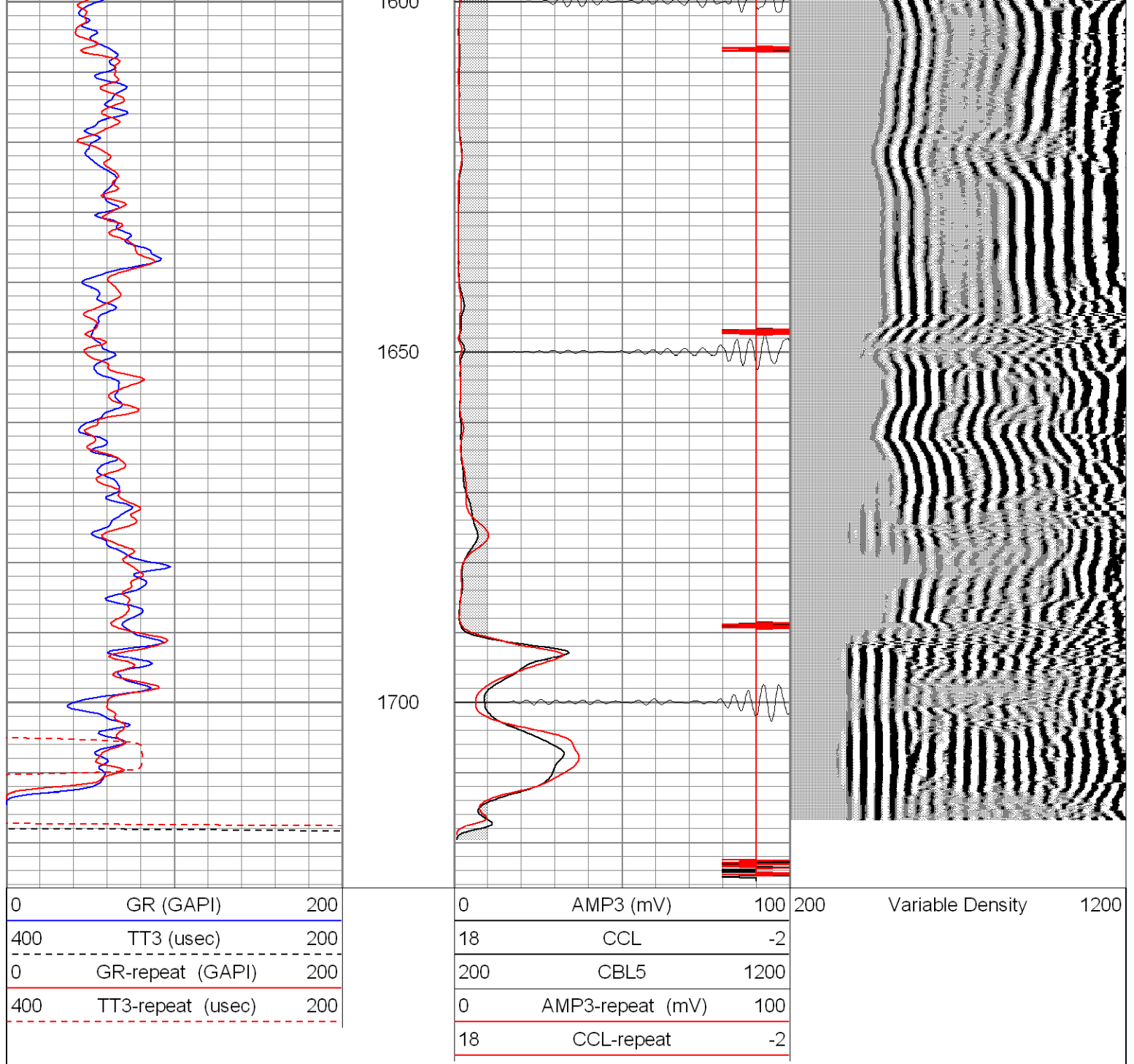
Database File: ebudd081308b.db
Dataset Pathname: pass1
Presentation Format: cblrt
Dataset Creation: Wed Aug 13 10:00:23 2008 by Log Open-Cased 071220
Charted by: Depth in Feet scaled 1:240

0	GR (GAPI)	200
400	TT3 (usec)	200
0	GR-repeat (GAPI)	200
400	TT3-repeat (usec)	200

0	AMP3 (mV)	100
18	CCL	-2
200	CBL5	1200
0	AMP3-repeat (mV)	100
18	CCL-repeat	-2

200	Variable Density	1200
-----	------------------	------





Calibration Report

Database File: ebudd081308b.db
 Dataset Pathname: pass1
 Dataset Creation: Wed Aug 13 10:00:23 2008 by Log Open-Cased 071220

Cement Bond Log Calibration Report

Serial Number: titan6
 Tool Model: T6
 Performed: Wed Aug 13 09:50:49 2008

Depth: 192.018 ft
 Casing Diameter: 5.5 in

3' Spacing 5' Spacing

Signal Zero:	0	0	mV
Calibrated Amplitude:	85	85	mV
Reading at Signal Zero:	0.00498047	0.00493164	V

Gamma Ray Calibration Report		
Serial Number:	titan6	
Tool Model:	T6	
Performed:	Mon Aug 11 08:32:31 2008	
Calibrator Value:	1.0	GAPI
Background Reading:	0.0	cps
Calibrator Reading:	1.0	cps
Sensitivity:	1.0000	GAPI/cps

Sensor	Offset (ft)	Schematic	Description	Len (ft)	OD (in)	Wt (lb)	
GR	13.64		None	0.75	1.50	5.00	
			GR-T6 (titan6)	2.52	2.44	25.00	
WVF5	9.49			CBL-T6 (titan6)	7.23	2.25	110.00
WVF3	8.49						
CCL	0.83			X	3.00	1.69	25.00
			CCL-T6 (titan6)	2.15	2.75	15.00	
			Long				
Dataset: ebudd081308b.db: field/well/run1/pass1 Total Length: 15.66 ft Total Weight: 180.00 lb O.D. 2.75 in							