

correctness damages, or ions are also	

accuracy or costs, data interpretation

the ac
ny loss
hese in

grantee
le for a
ees. Th

not guarantee possible employment.

and do not
or respo
nts or e
Sched

Services

cannot and
be liable
ers, aged
nt Price

asing

ys!!

5" ca
Survey
0

ation	
nts and on our y of our t in our	
for 4 6 nix S 16-0	

ated
g 12
Phone
-265

meas
neglig
made
ditions
omme

or other
or willful
retention
and con

Co

the ca
Ensig
or us
#: 05-

Electrical c
gross c
interpr
terms a

volume E
you fo
API #

from elec
ase of
om any
neral to

ular v

ank y

A

Annual

That

inferer
except i
the resu
ject to

used on
will not, e
for anyone
sub

ons bas
we shal
ned by

the opinion
a, and w
r sustain

ere >>>

ons are
etation
rred on

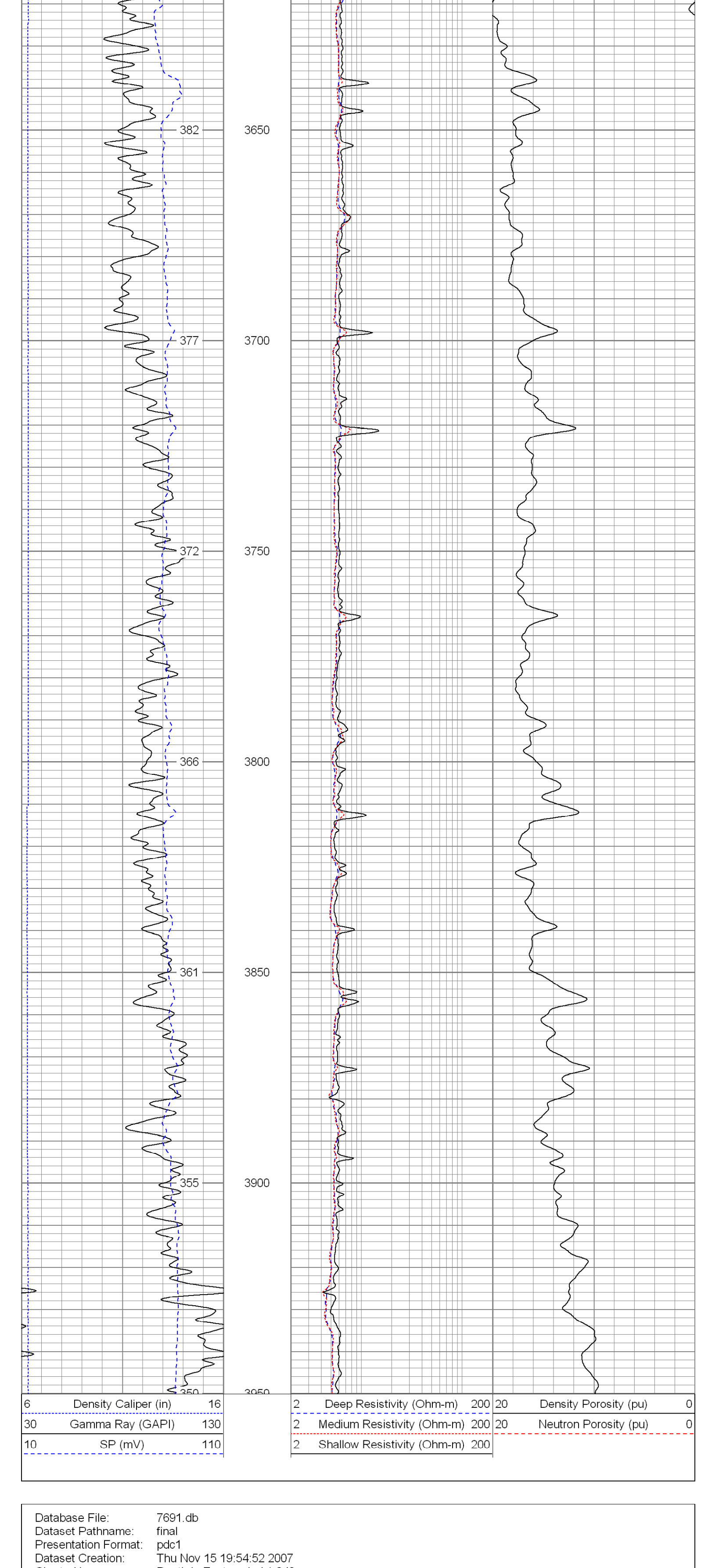
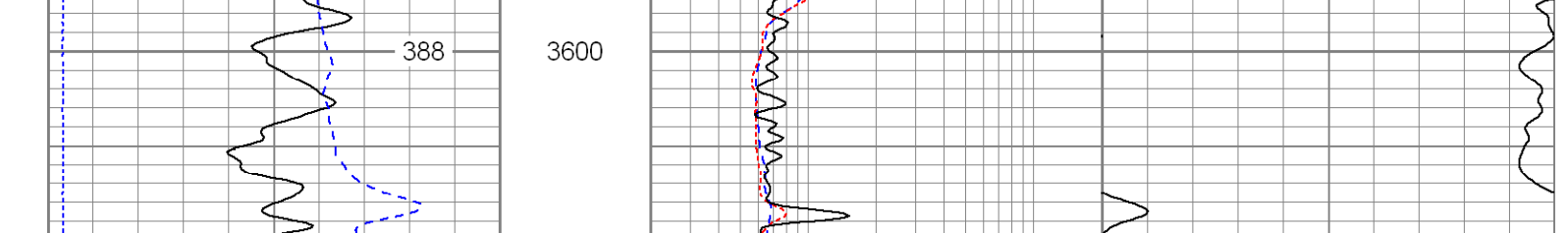
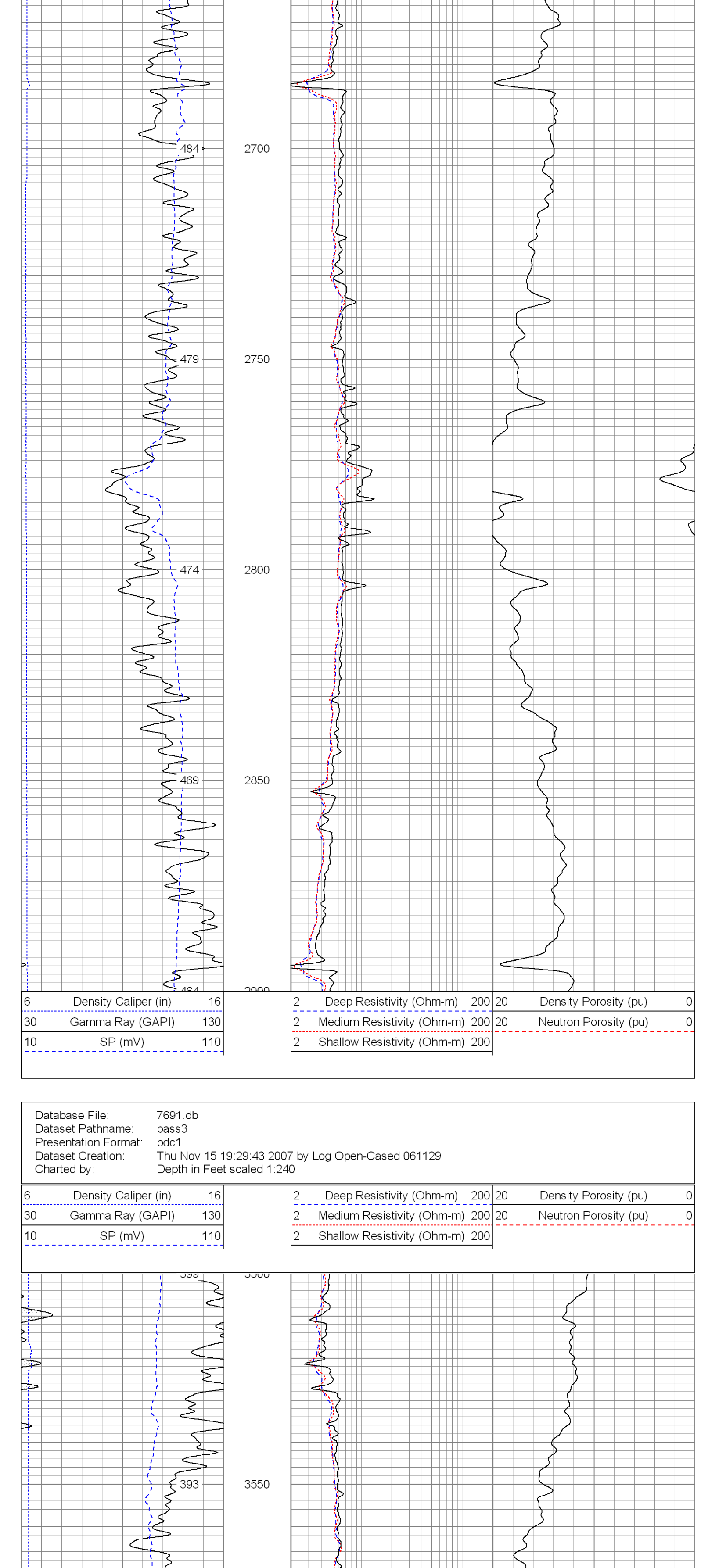
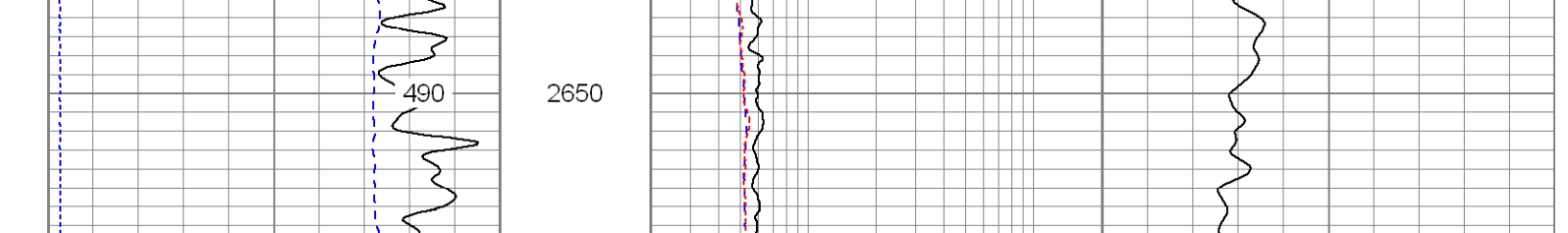
			Fold He
			pretati interpr es inclu

All interest of any expenses

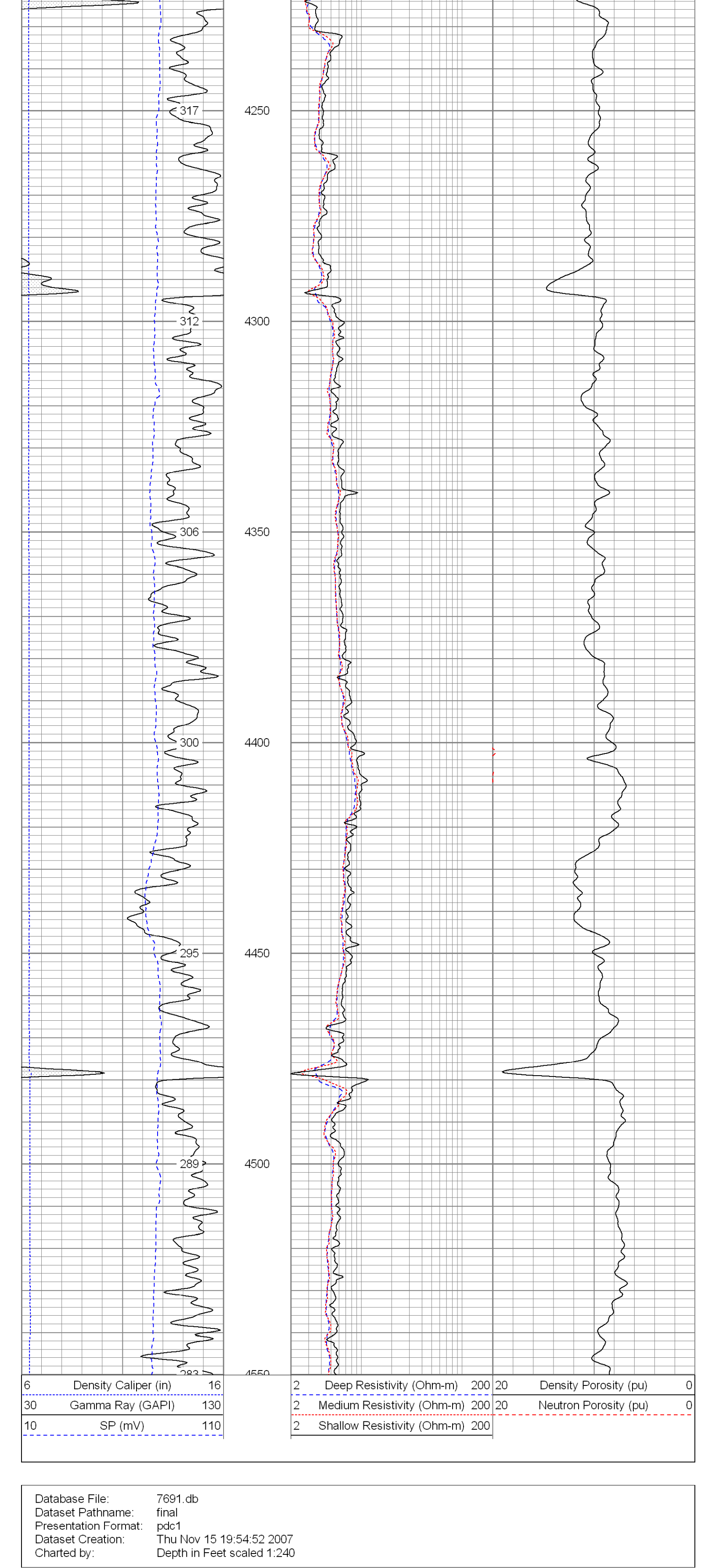
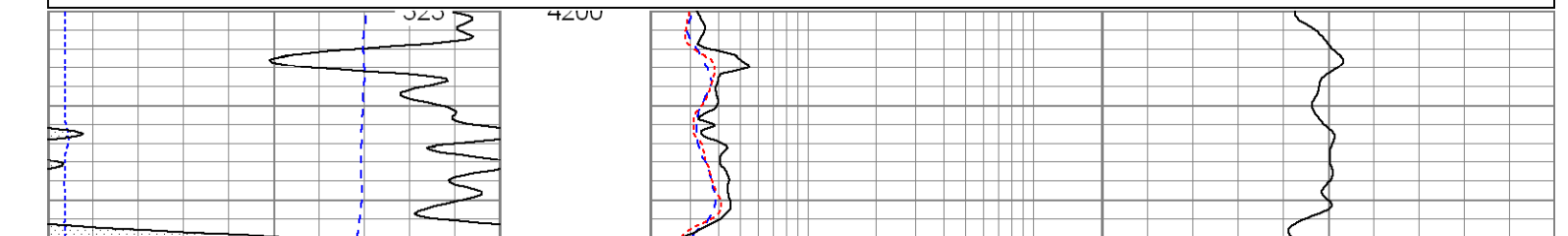
[illegible]

Database File: 7691.db
 Contact: Eshenkov, Yury

Presentation Format:		pdf		3.5					
Dataset Creation:		Thu Nov 15 19:29:43 2007		by Log Open-Cased 061129					
Charted by:		Depth in Feet scaled 1:240							
6	Density Caliper (in)	16		2	Deep Resistivity (Ohm-m)	200	20	Density Porosity (pu)	0
30	Gamma Ray (GAPI)	130		2	Medium Resistivity (Ohm-m)	200	200	Neutron Porosity (pu)	0
40	Gamma Ray (GAPI)	150							



Charted by:		Depth in Feet scaled 1:240	
6	Density Caliper (in)	16	
30	Gamma Ray (GAPI)	130	
10	SP (mV)	110	
2	Deep Resistivity (Ohm-m)	200	Density Porosity (pu)
2	Medium Resistivity (Ohm-m)	200	Neutron Porosity (pu)
2	Shallow Resistivity (Ohm-m)	200	



6	Density Caliper (in)	130	2	Deep Resistivity (Ohm-m)	200	20	Density Porosity (pu)	0
30	Gamma Ray (GAPI)	130	2	Medium Resistivity (Ohm-m)	200	20	Neutron Porosity (pu)	0
10	SP (mV)	110	2	Shallow Resistivity (Ohm-m)	200			

