

CEMENT BOND GAMMA RAY COLLAR CORRELATION LOG

Company K.P. KAUFFMAN COMPANY

Well HEPP 31-32

Field WATTENBERG

County WELD State COLORADO

Location: API #: 05-123-25314-00
1320' FNL & 200' FWL
SW/NW
SEC. 32, TWP. 4N, RGE. 67W
SEC TWP RGE

Other Services
PERF

Permanent Datum GROUND LEVEL Elevation 5027
Log Measured From KELLY BUSHING
Drilling Measured From KELLY BUSHING

Elevation
K.B. 5039
D.F. 5038
G.L. 5027

	07-APRIL-2008		
er	ONE		
er	8001		
ger	7929		
ged interval	7924		
erval	3700		
Size	7 7/8		
	WATER		
scosity	---		
ded Temp.	NOT RECORDED		
Cement Top	3856		
Ready	---		
er on Bottom	---		
Number	473/CR-29/GREEN		
	BRIGHTON, CO.		
ly	CURT ERICKSON		
By	RICK OHLEMEIER		

Borehole Record				Tubing Record			
er	Bit	From	To	Size	Weight	From	To
ord	Size		Wgt/Ft		Top		Bottom
ng							

All interpretations are opinions based on inferences from electrical or other measurements and we cannot and do not guarantee the accuracy or correctness of any interpretation, and we shall not, except in the case of gross or willful negligence on our part, be liable or responsible for any loss, costs, damages, or expenses incurred or sustained by anyone resulting from any interpretation made by any of our officers, agents or employees. These interpretations are also subject to our general terms and conditions set out in our current Price Schedule.

Comments

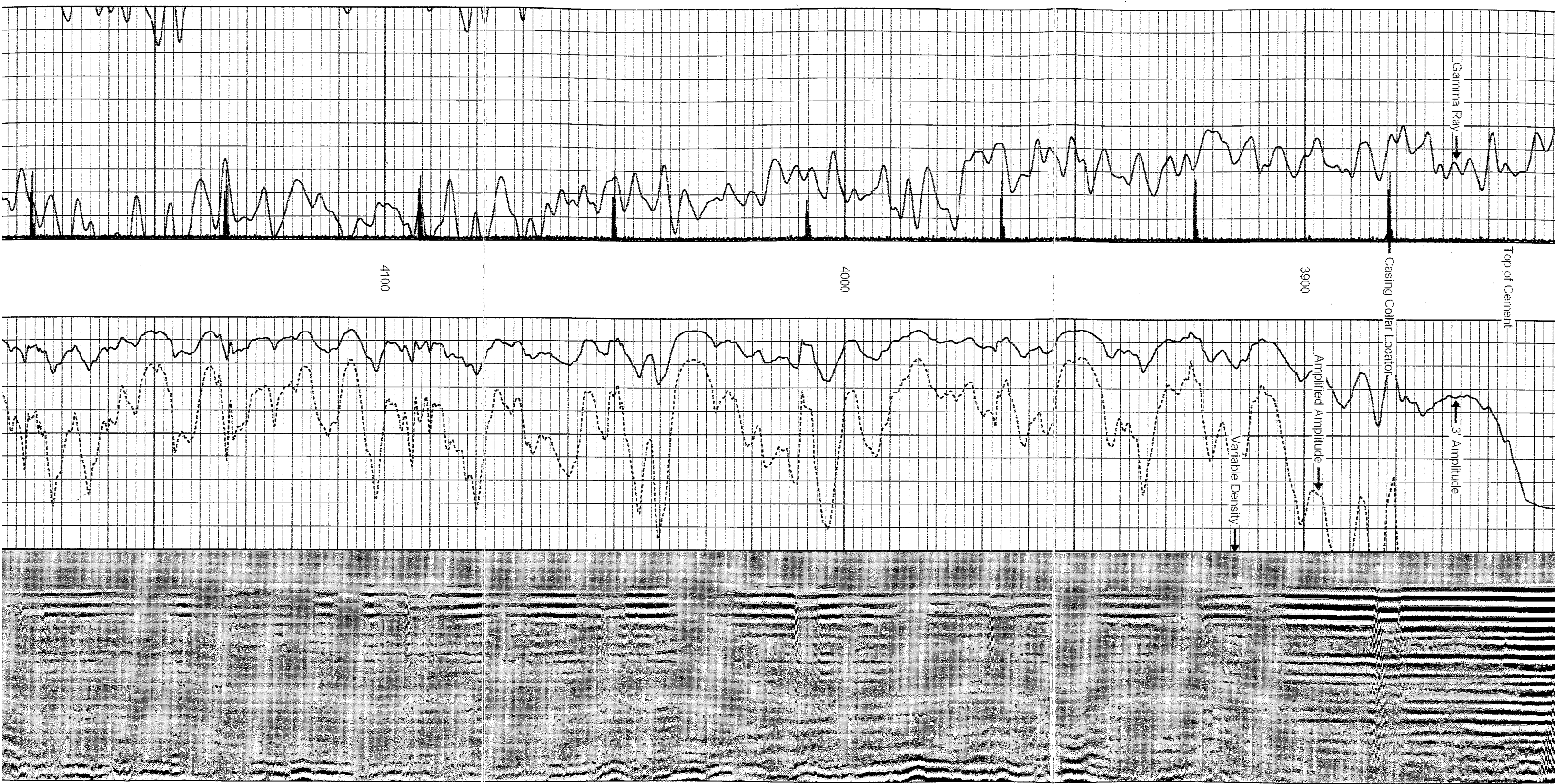
LOG CORRELATED TO DILCDN/GR DATED 18-MARCH-2008

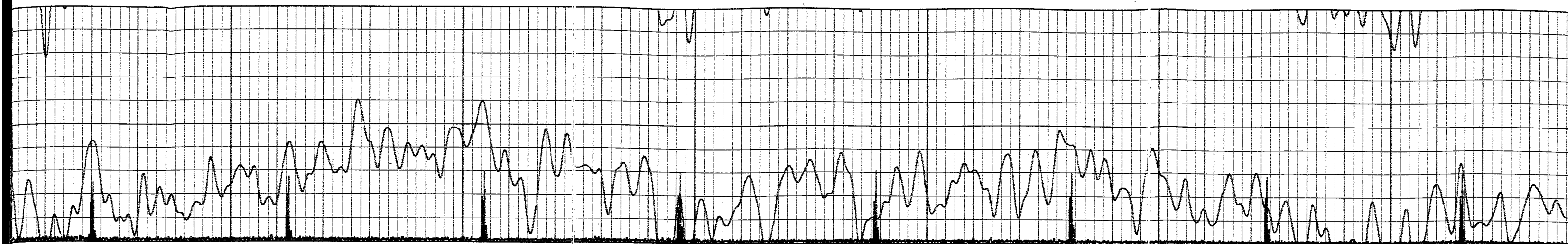
LOG SPLIT FOR CORRELATION PURPOSES

Database File: hepp 31-32.db
Dataset Pathname: pass2
Presentation Format: cbk
Dataset Creation: Mon Apr 07 09:57:58 2008 by Log Std Casedhole 07122
Charted by: Depth in Feet scaled 1:240

30	Gamma Ray (GAPI)	130	0	Amplified Amplitude (mV)	30	200	Variable Density	1200
-5	CCL	0.05	0	Amplitude (mV)	0	100		



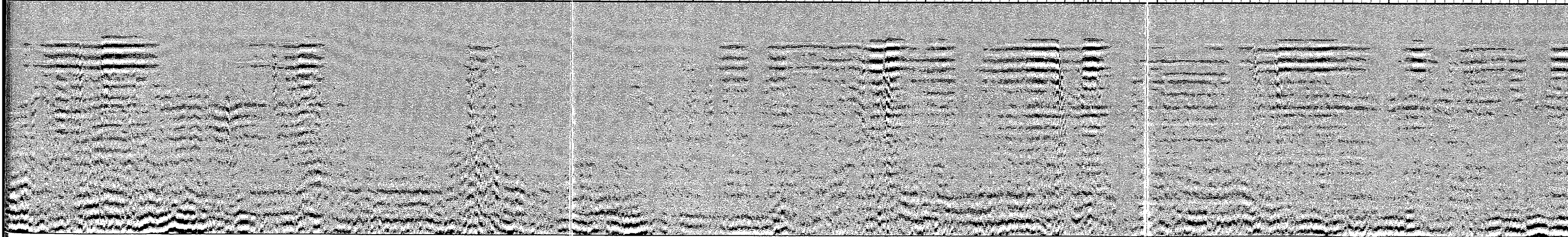
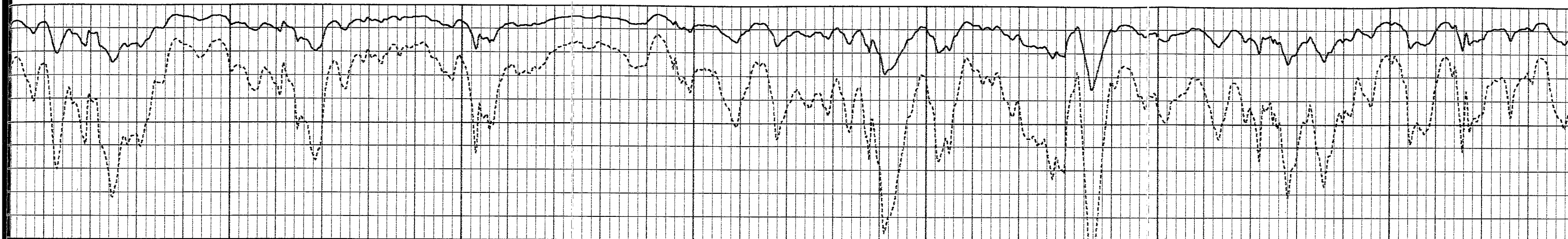


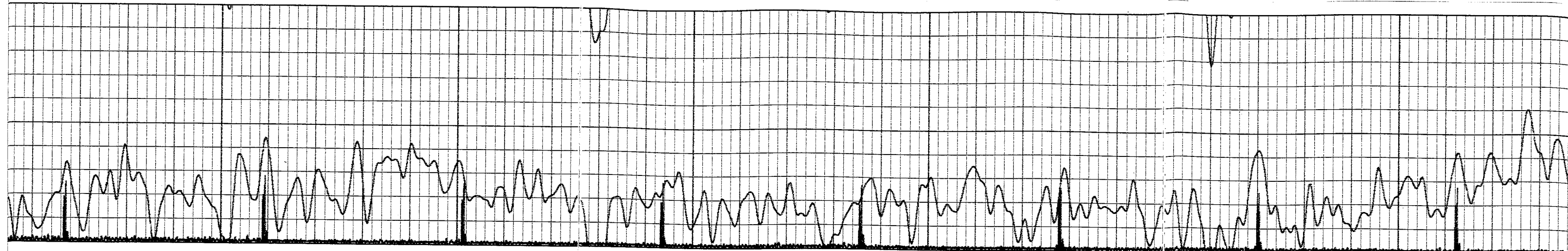


4400

4300

4200

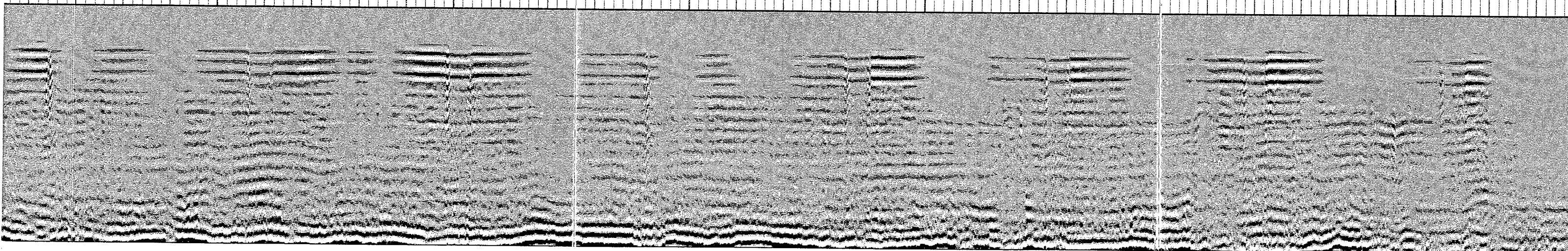
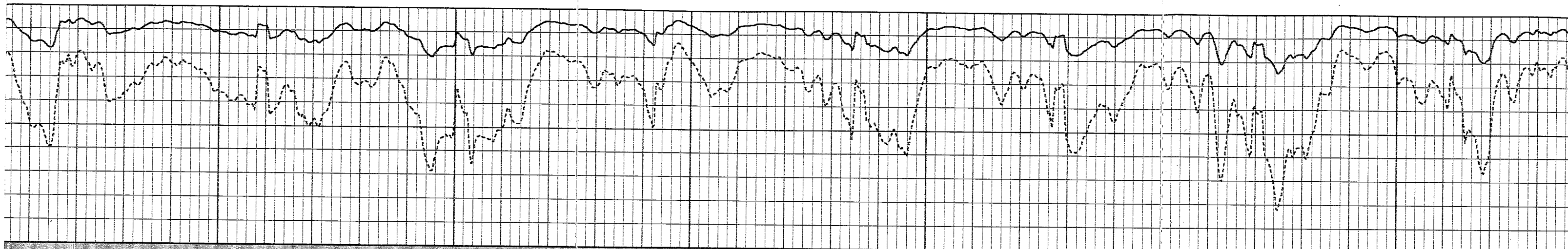


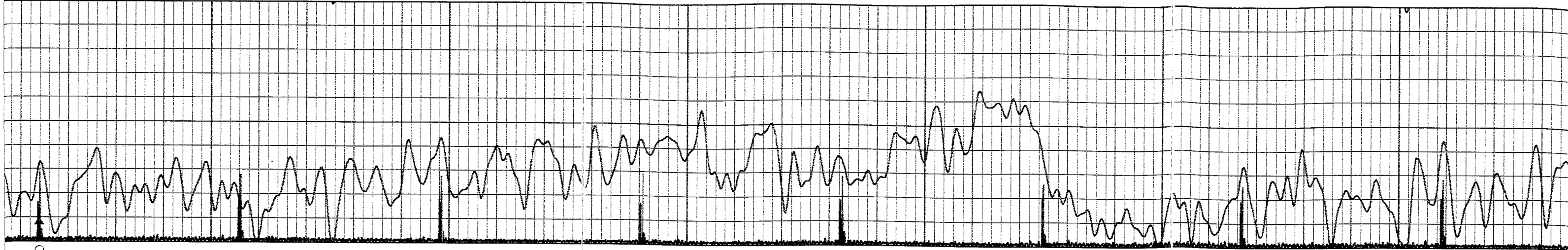


4600

4500

4400



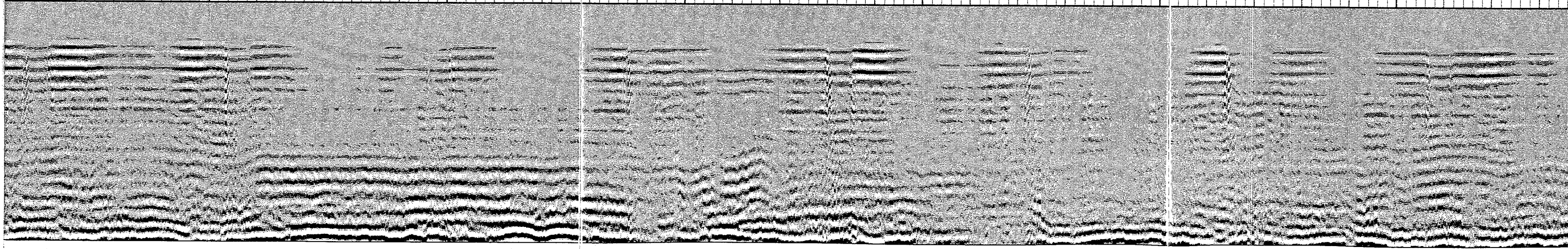
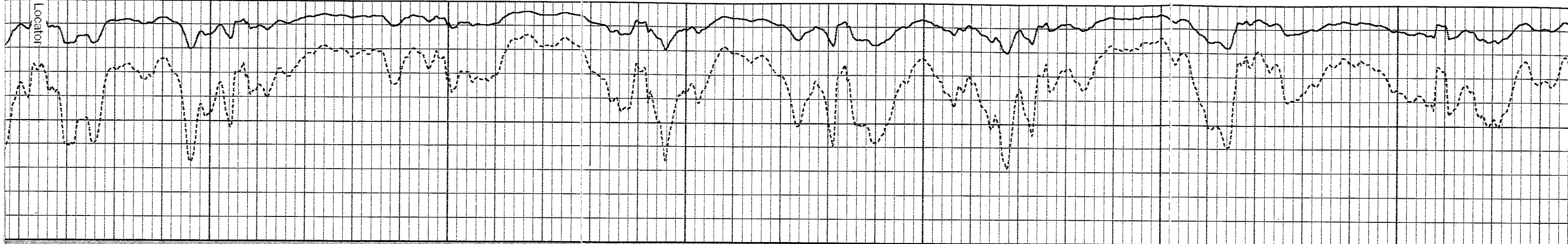


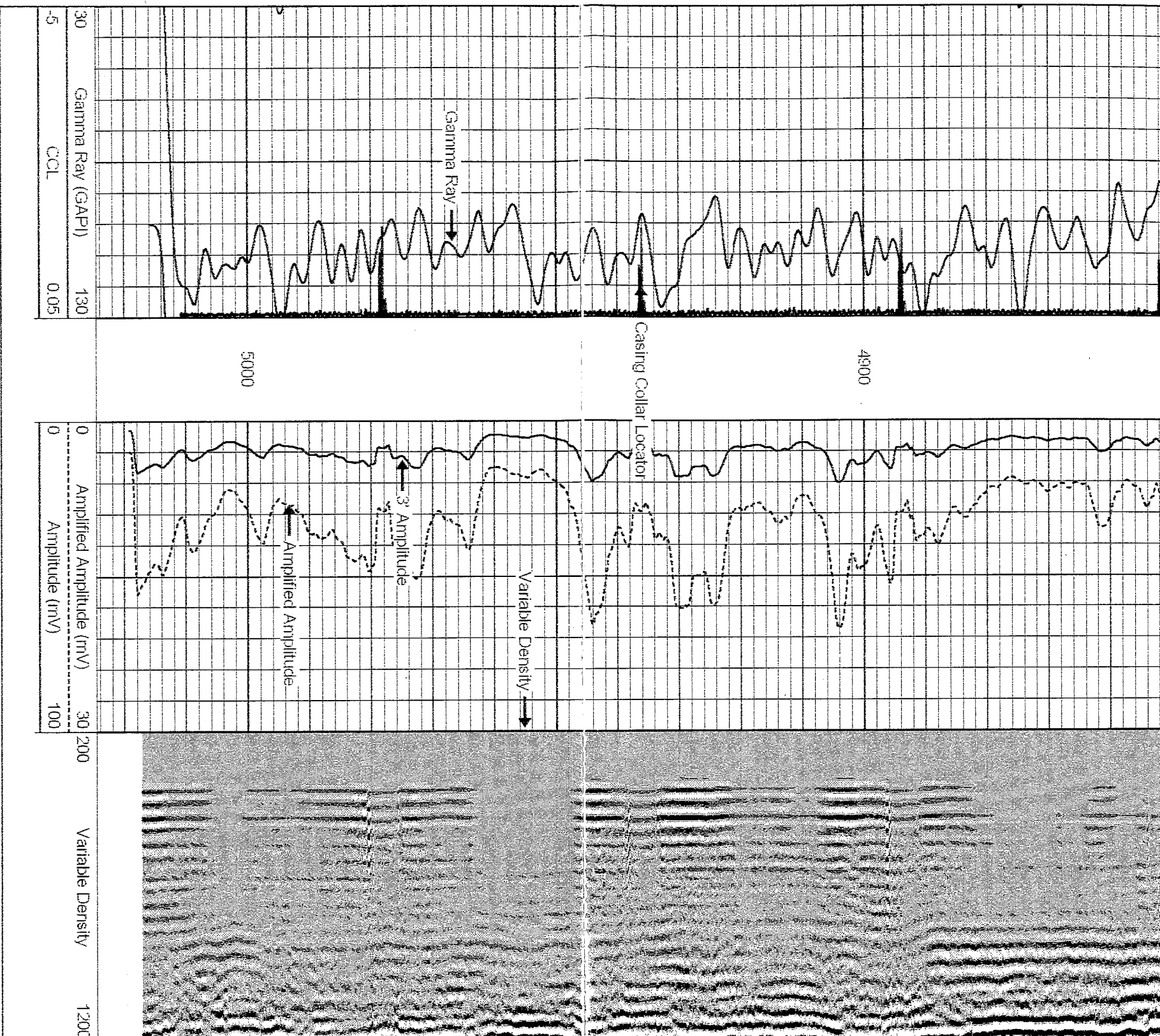
4700

4800

4900

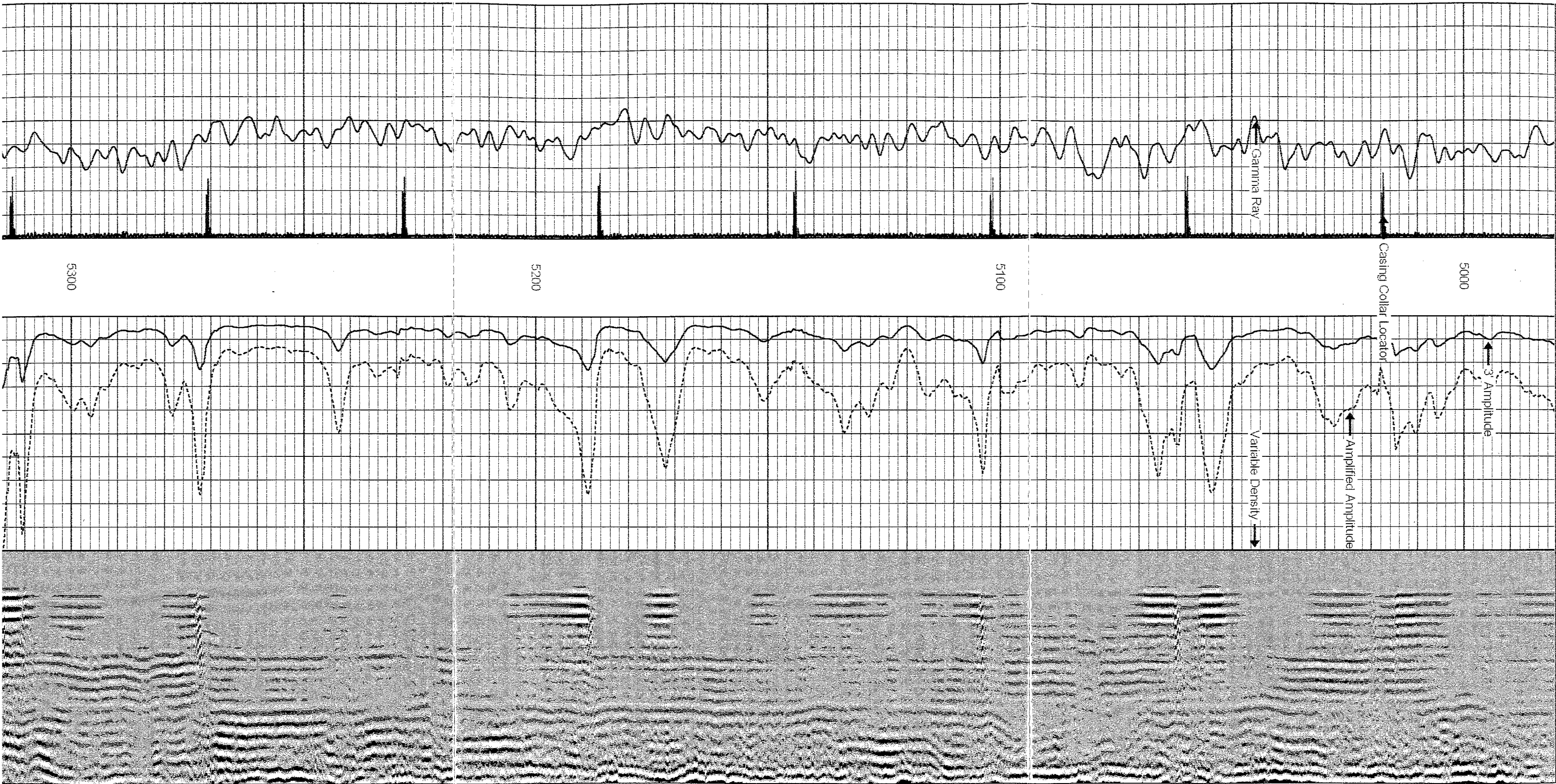
Casing Collar Locator





Database File: hepp 31-32.dlb
Dataset Pathname: pass1
Presentation Format: cbx
Dataset Creation: Mon Apr 07 09:13:56 2008 by Log Std Casedhole 07122
Charted by: Depth in Feet scaled 1:240



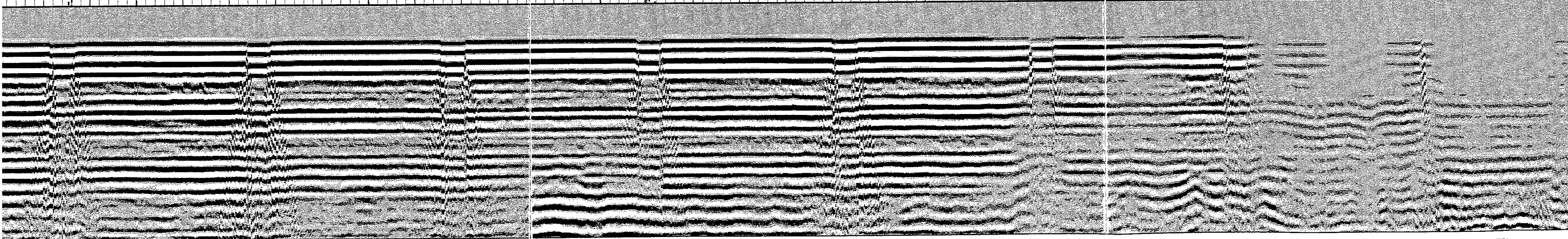
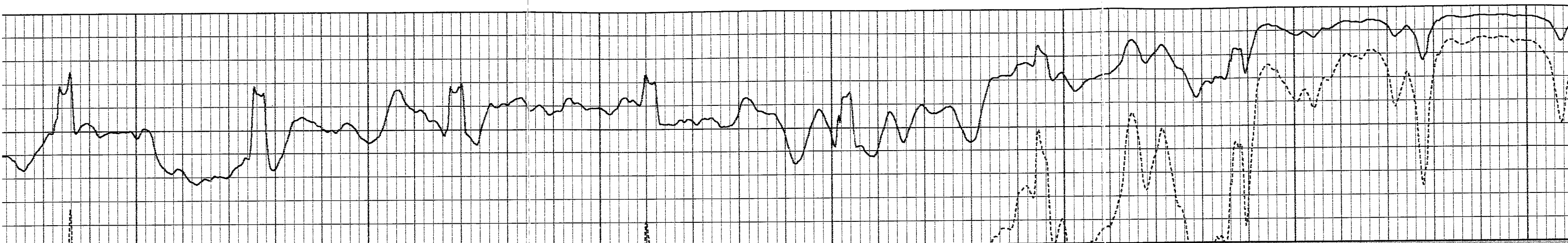


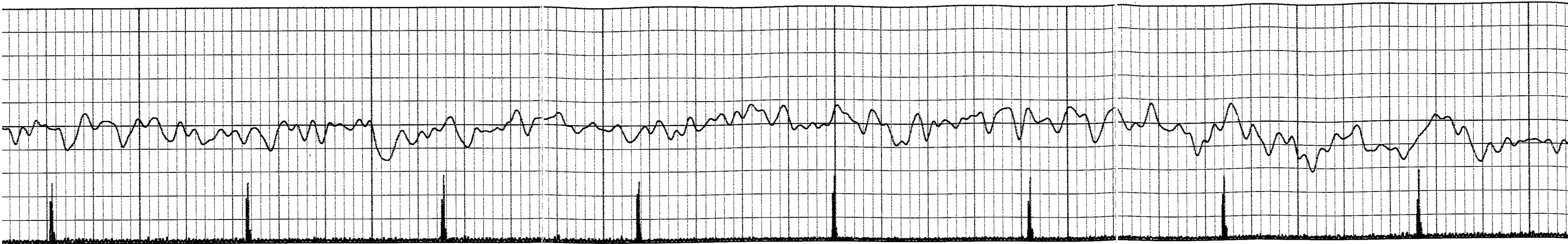


5500

5400

5300



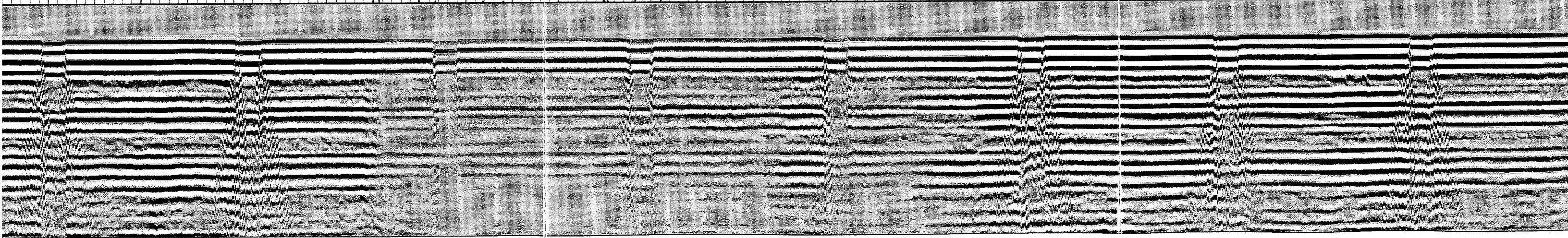
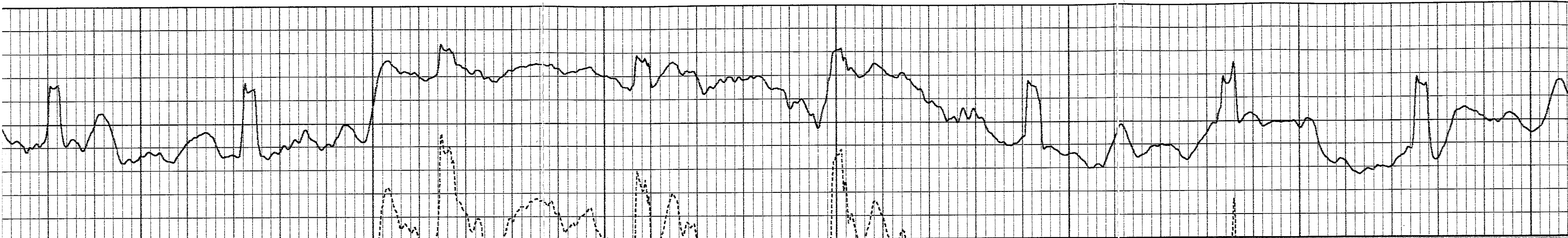


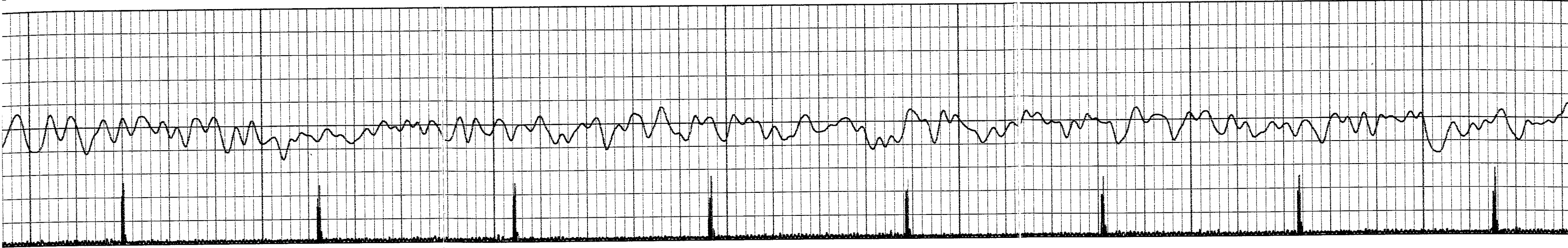
5800

5700

5600

5500

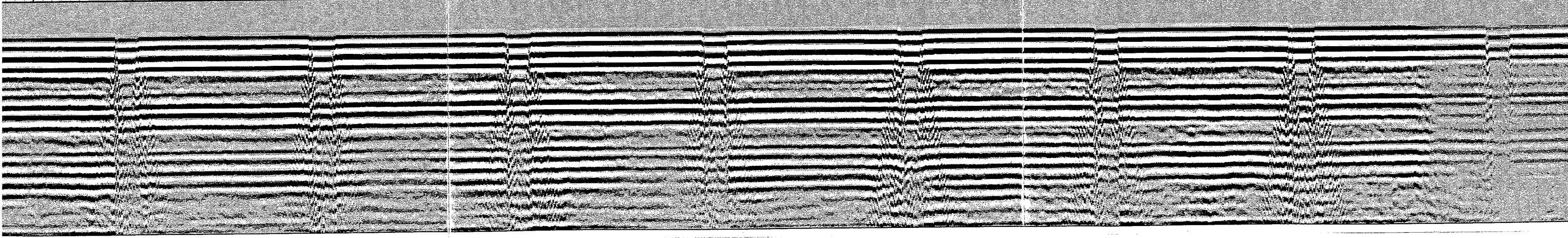
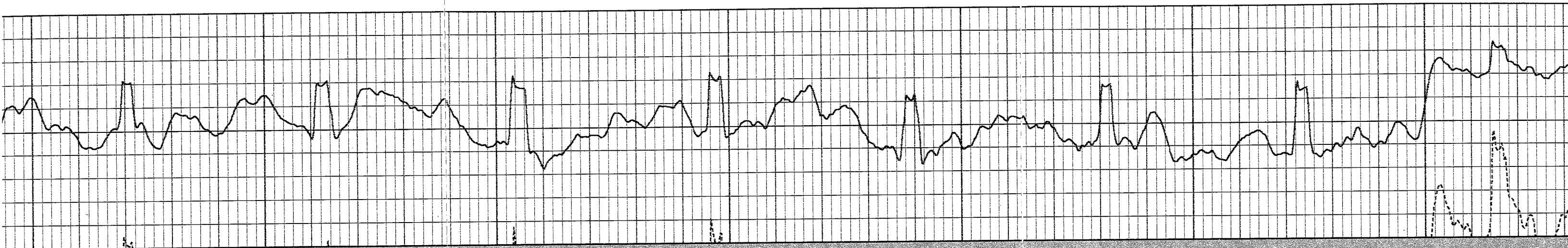


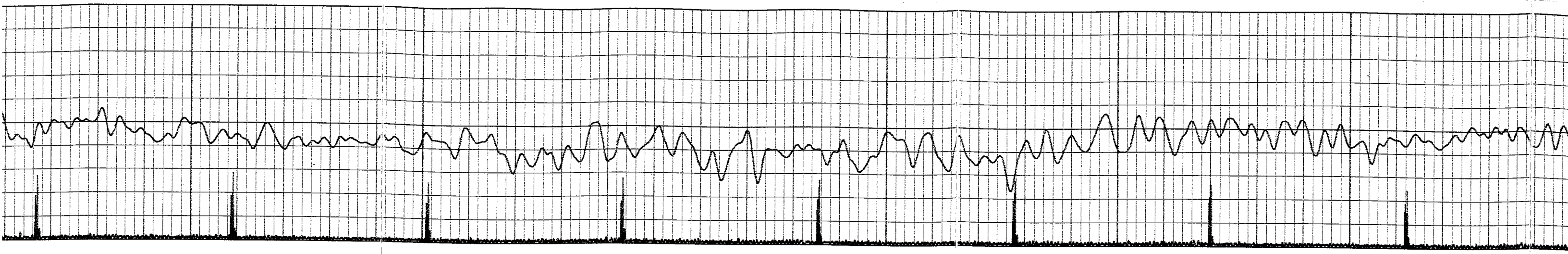


6000

5900

5800

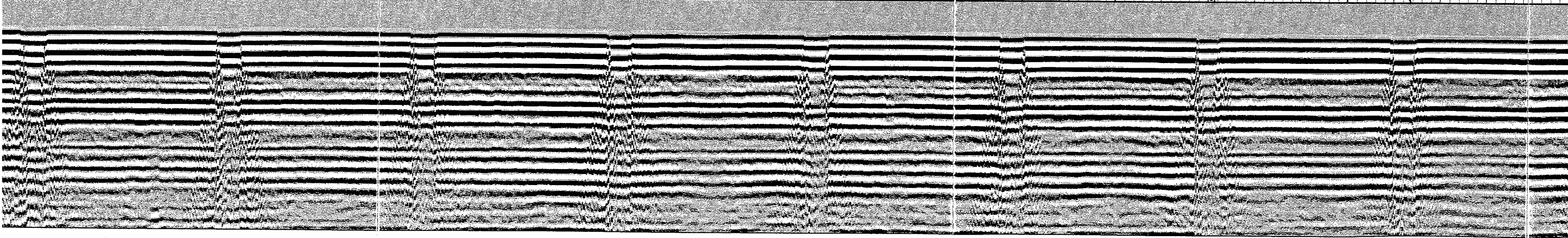
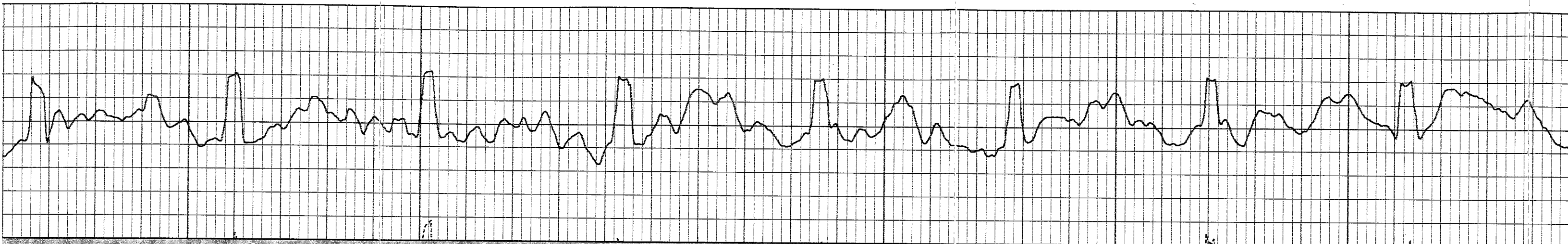


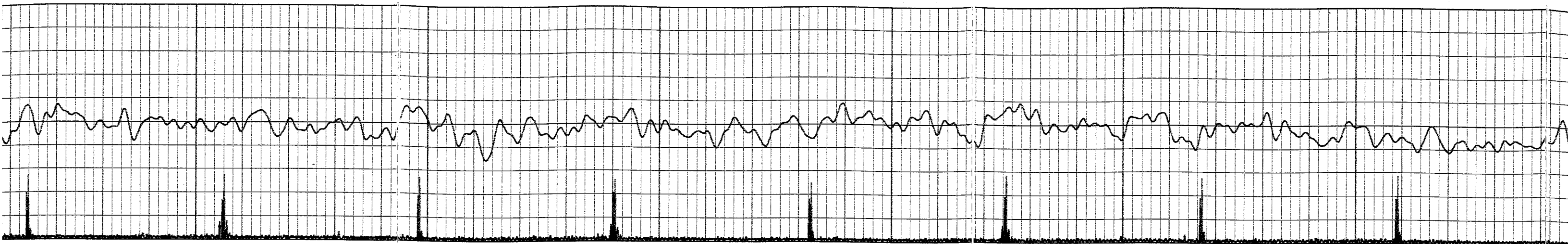


6200

6100

6000

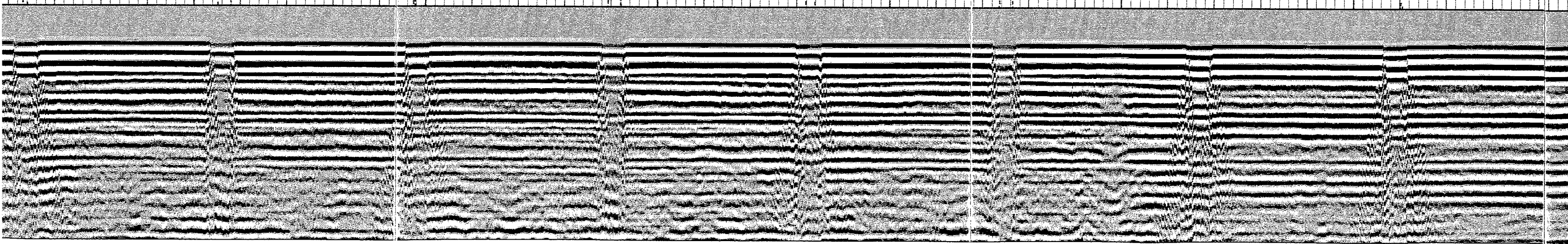
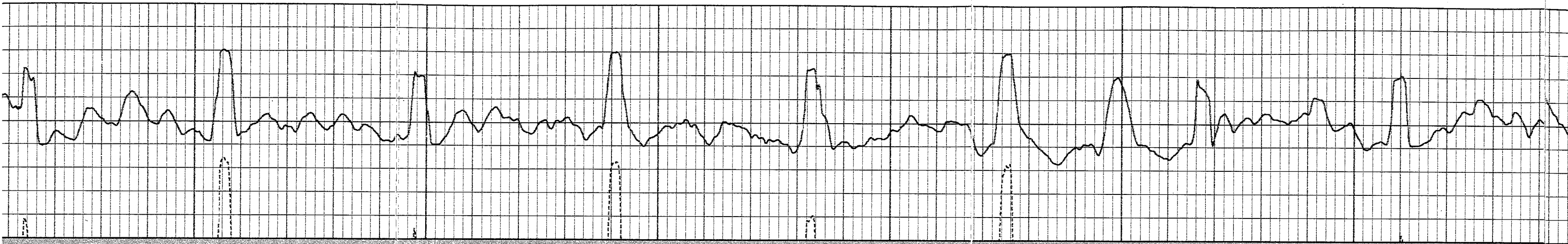


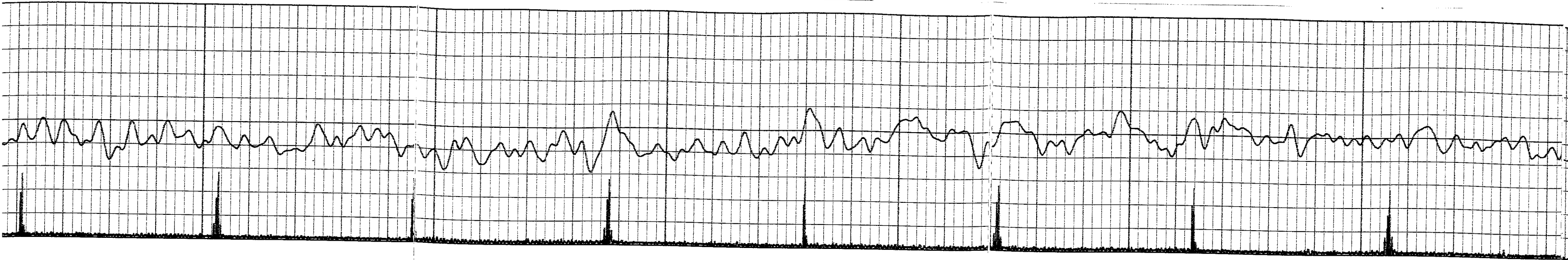


6500

6400

6300

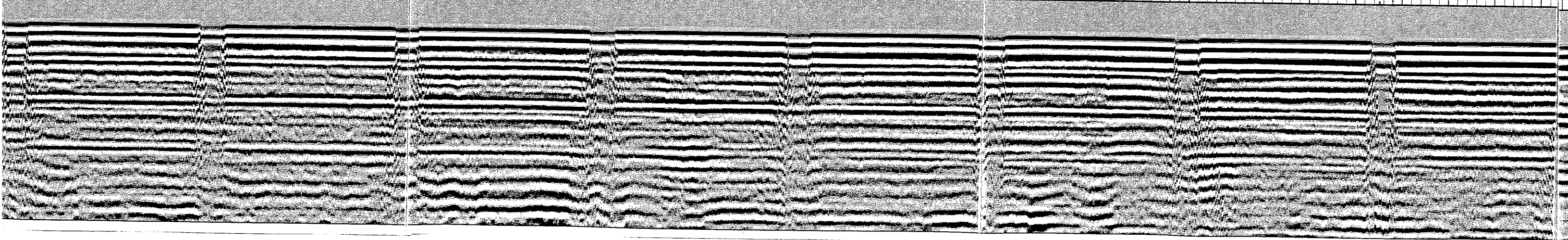
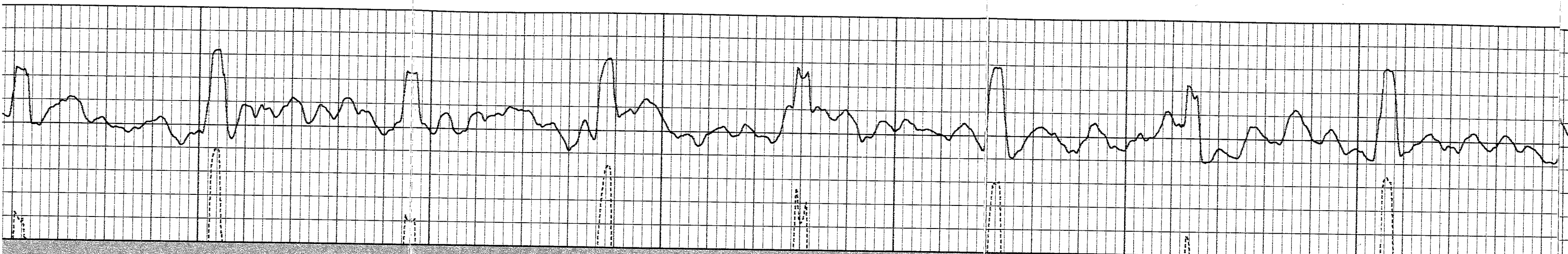


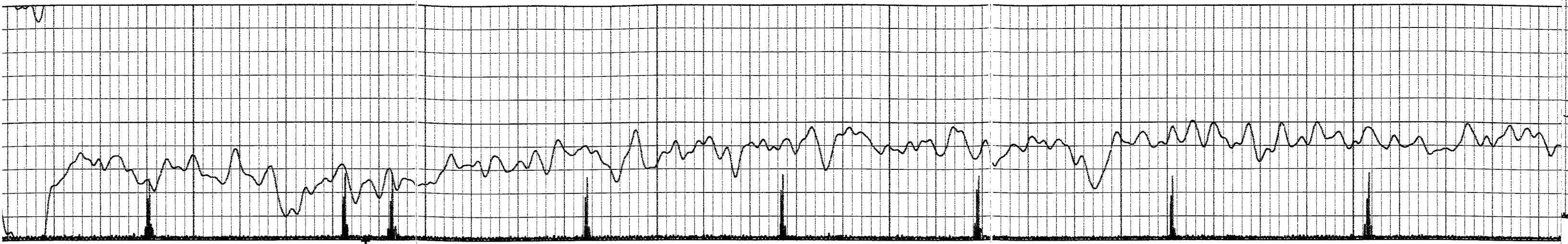


6700

6800

6900



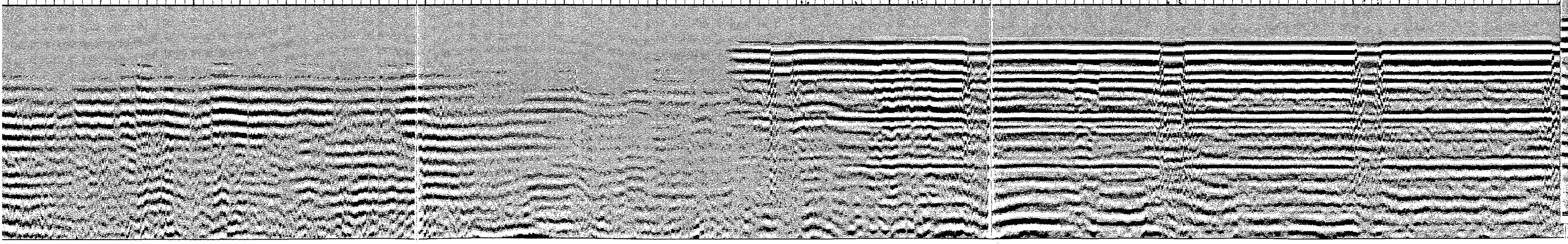
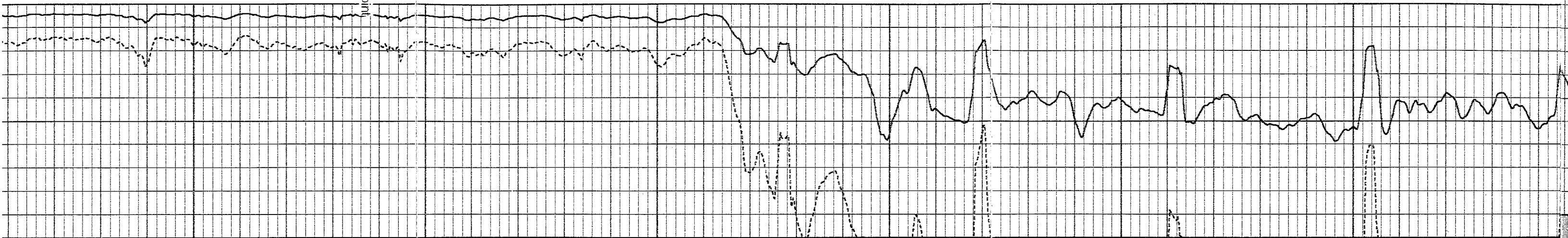


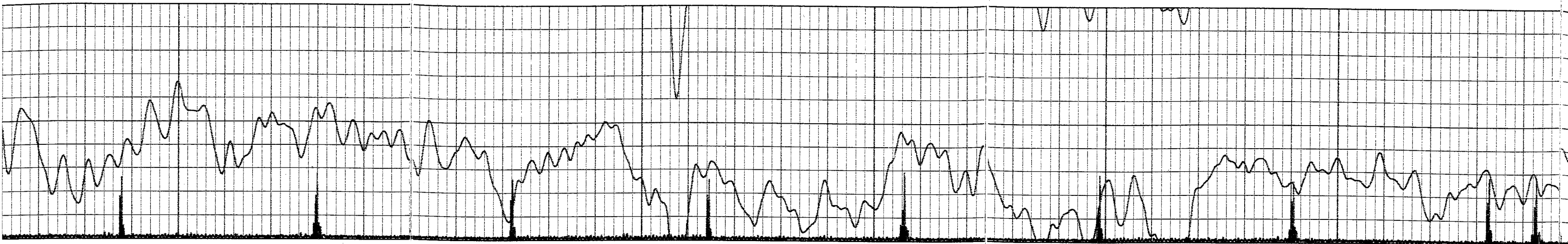
7000

Marker Joint

6900

6800



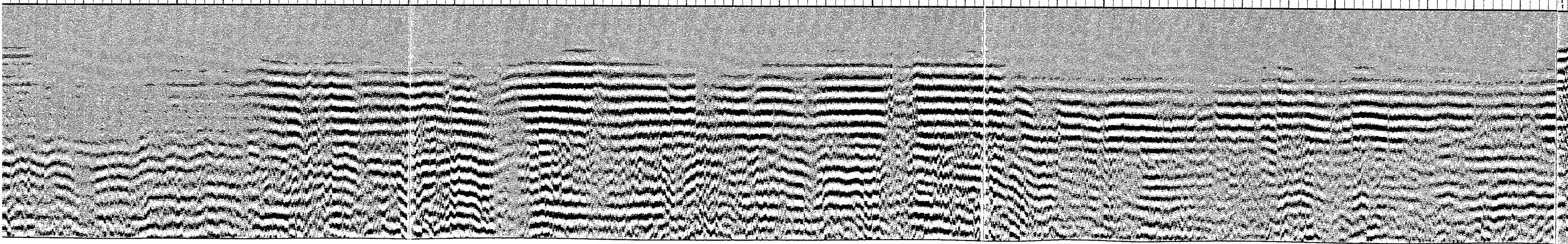
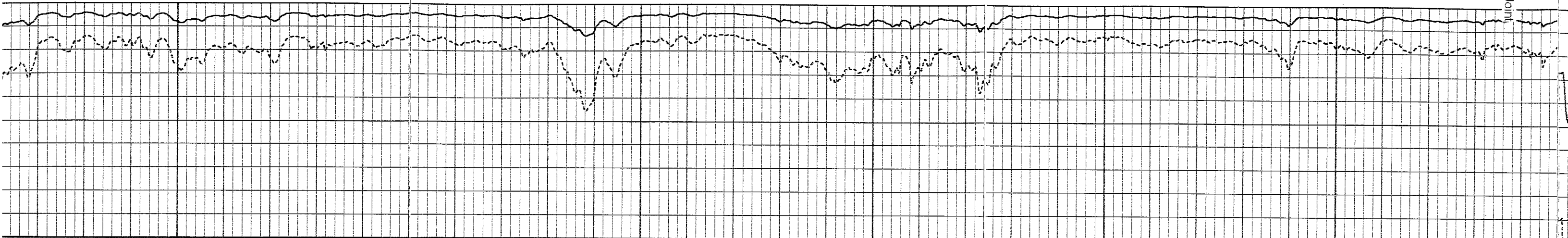


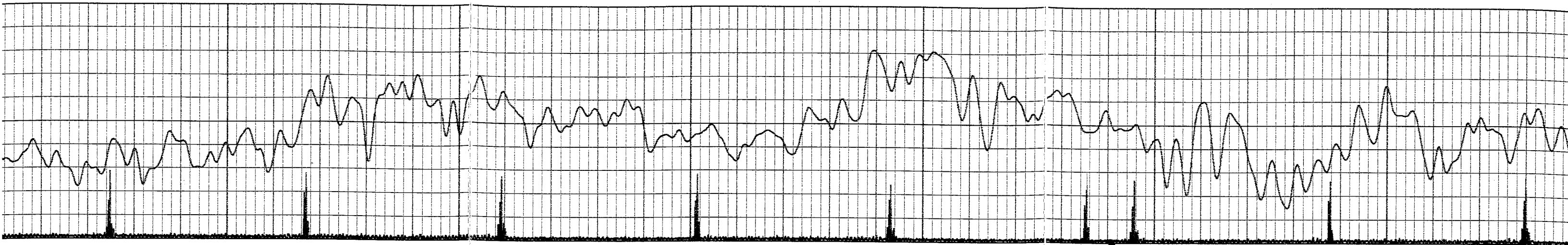
7200

7100

7000

Marker Joint



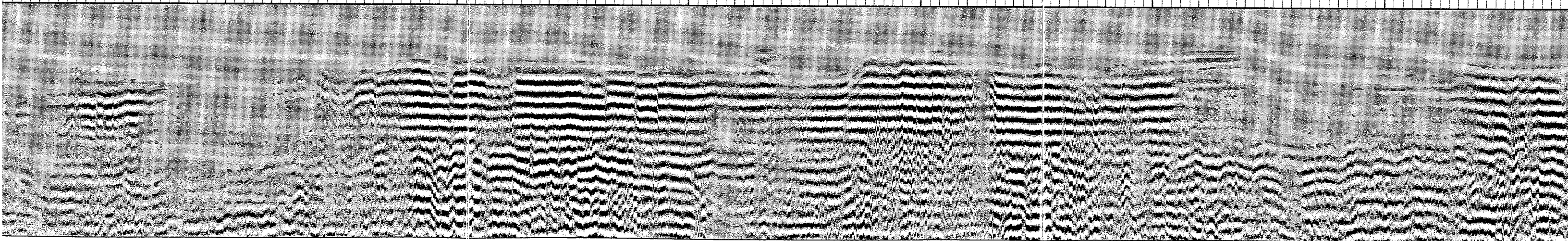
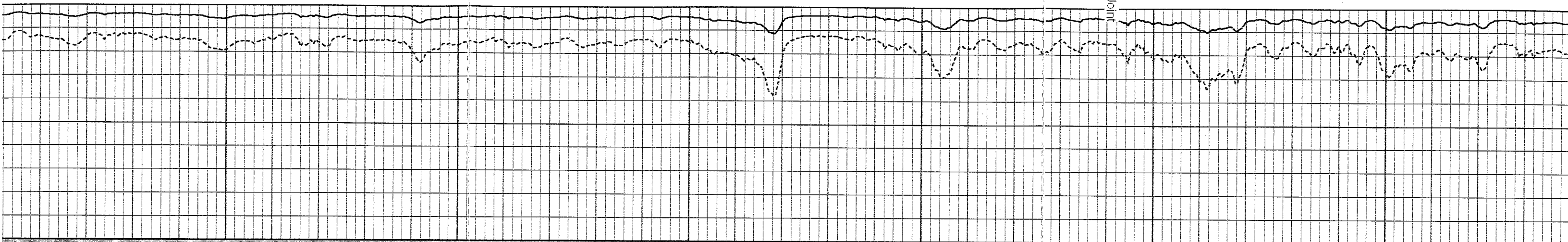


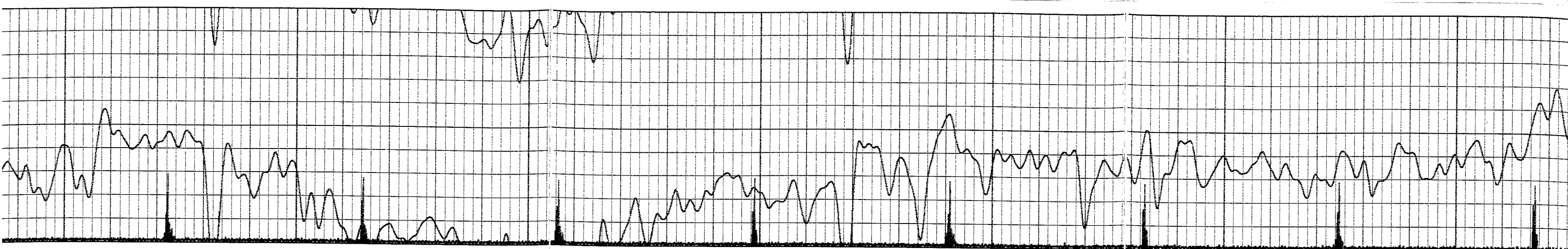
7500

7400

Marker Joint

7300



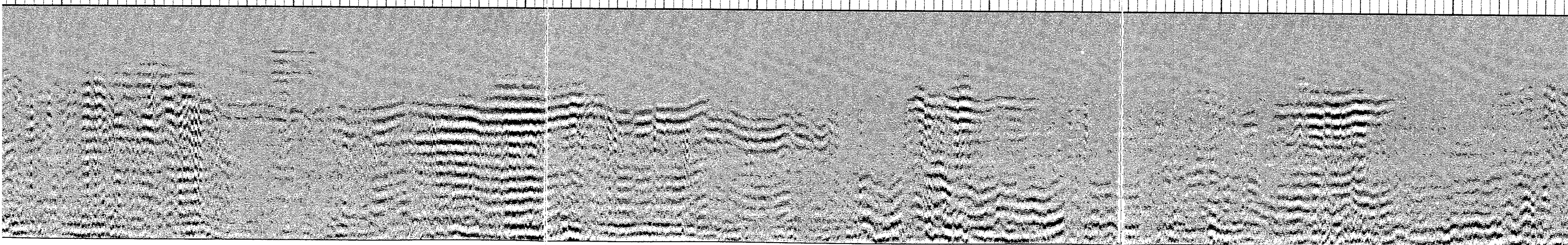
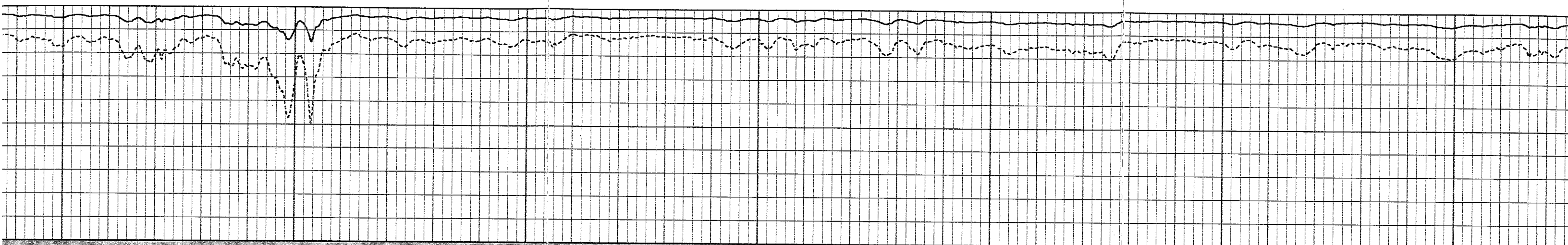


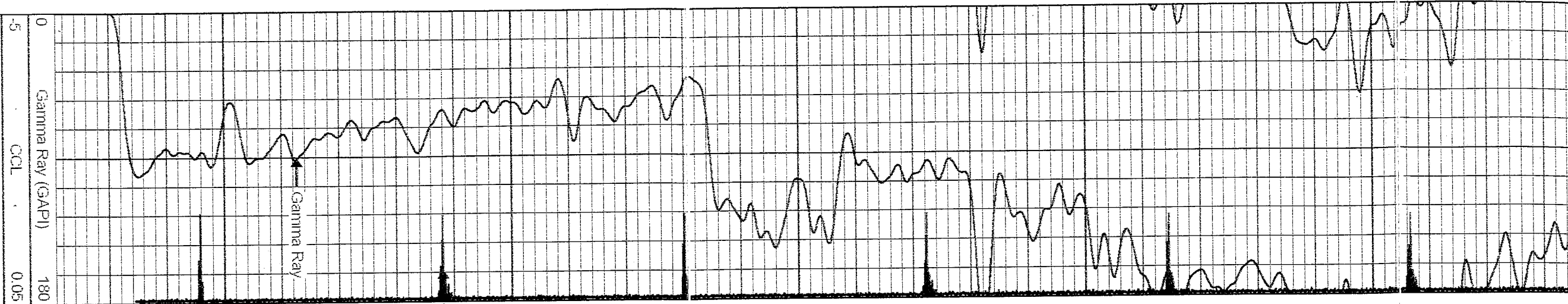
7800

7700

7600

7500



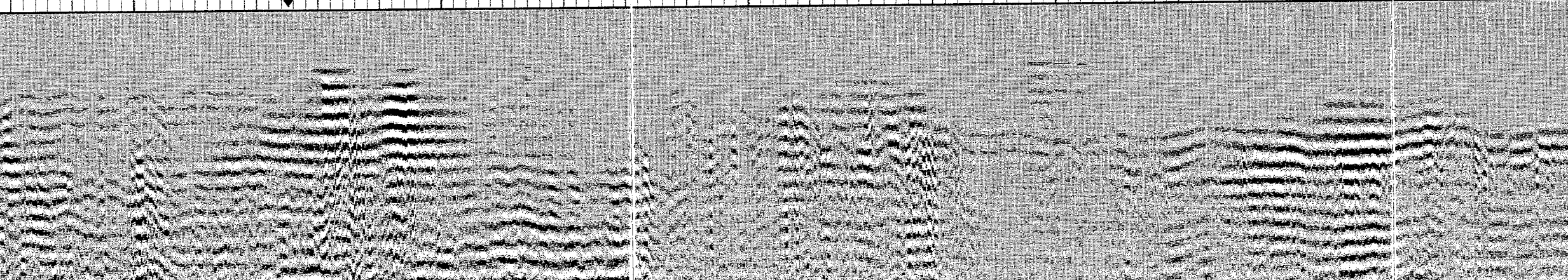
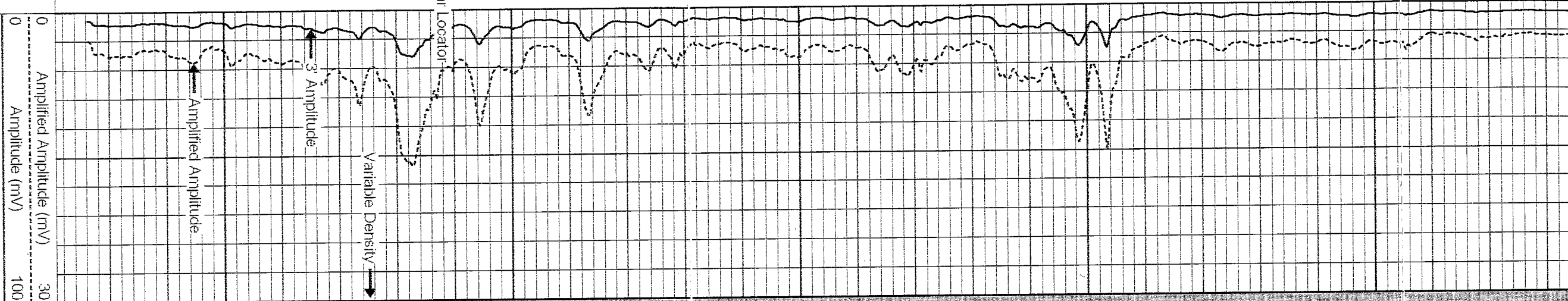


7900

7800

7700

Casing Collar Location



Variable Density