



Mesa Wireline

CEMENT BOND LOG

Company	ENCANA OIL & GAS (USA)		
Well	COUEY 24-10B (F24W)		
Field	MAMM CREEK		
County	GARFIELD		
State	COLORADO		
Location:	API # : 05045148640000		Other Services
SURFACE HOLE: SENW 1506' FNL & 1552' FWL			
SEC: 24 TWP: 07S RGE: 93W		NONE	
Permanent Datum	GROUND LEVEL		Elevation 6452'
Log Measured From	KELLY BUSHING = 19 FT		K.B. 6471'
Drilling Measured From	KELLY BUSHING		D.F. 6470'
			G.L. 6452'

Date	23 SEPT 2008			
Run Number	ONE			
Depth Driller	8248'			
Depth Logger	4198'			
Bottom Logged Interval	4198'			
Top Log Interval	3600'			
Open Hole Size	7.875"			
Type Fluid	WATER			
Density / Viscosity	~8.34#			
Max. Recorded Temp.	146 DEG F			
Estimated Cement Top	4100'			
Time Well Ready	N/A			
Time Logger on Bottom	N/A			
Equipment Number	FLO602W/RBT02			
Location	GRAND JUNCTION			
Recorded By	D. SOLIS			
Witnessed By	R. WIRTH			
Borehole Record		Tubing Record		
Run Number	Bit	From	To	Size
N/A				N/A
Casing Record	Size	Wgt/Ft	Top	Bottom
Surface String	N/A	N/A	N/A	N/A
Prot. String				
Production String	4.5"	11.6#	SURFACE	8248'
Liner				

<<< Fold Here >>>

All interpretations are opinions based on inferences from electrical or other measurements and we cannot and do not guarantee the accuracy or correctness of any interpretation, and we shall not, except in the case of gross or willful negligence on our part, be liable or responsible for any loss, costs, damages, or expenses incurred or sustained by anyone resulting from any interpretation made by any of our officers, agents or employees. These interpretations are also subject to our general terms and conditions set out in our current Price Schedule.

Comments

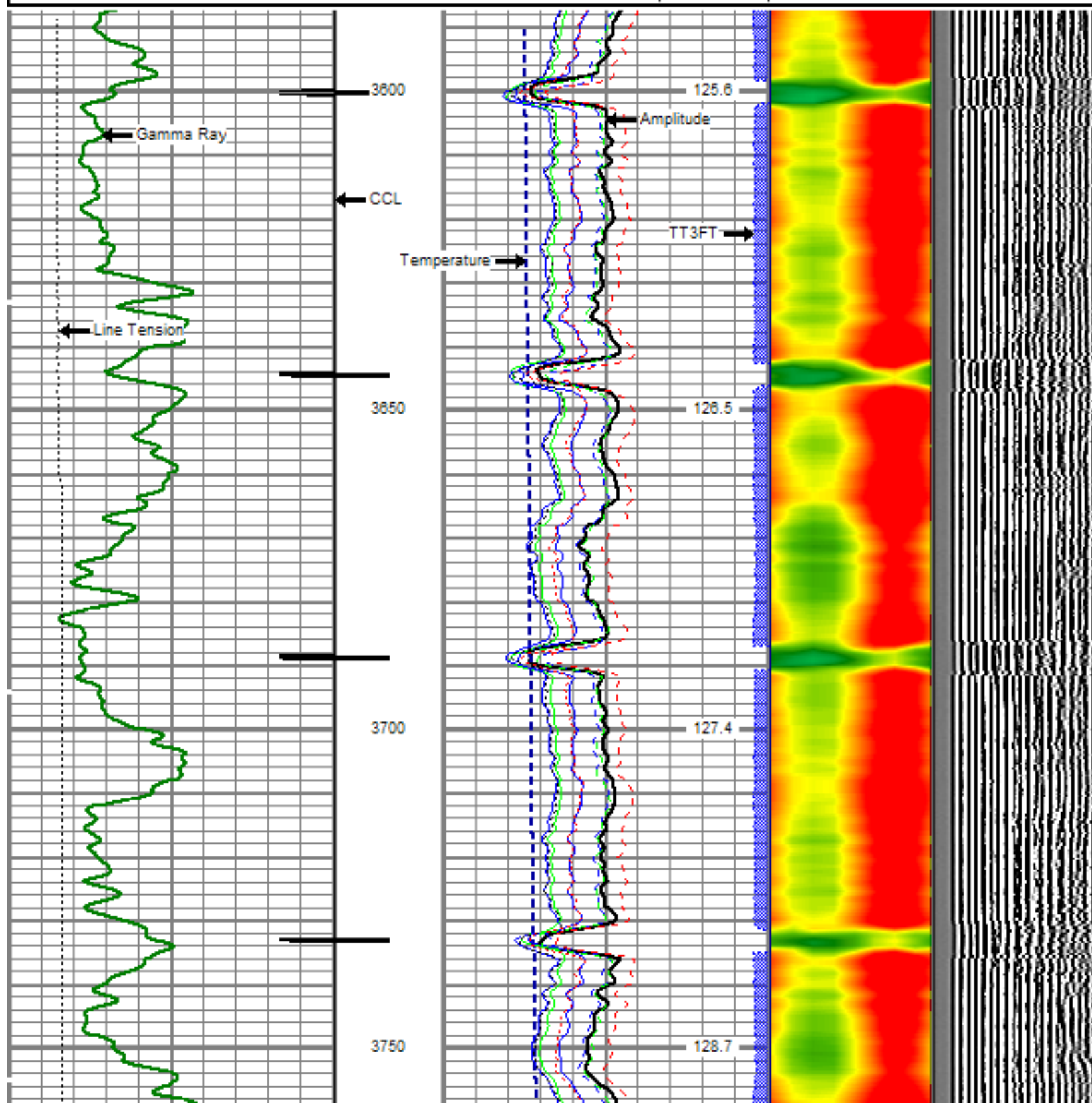
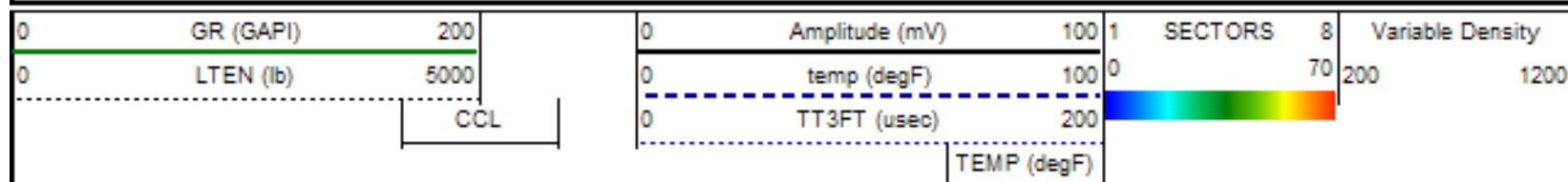
RBT-GR-TEMP RAN IN COMBINATION
CORRELATED TO SCHLUMBERGER CBL LOG DATED: 01 JULY 2008.
LOG INTERVALS PER CUSTOMER REQUEST.
CEMENT RETAINER SET AT 4200'.

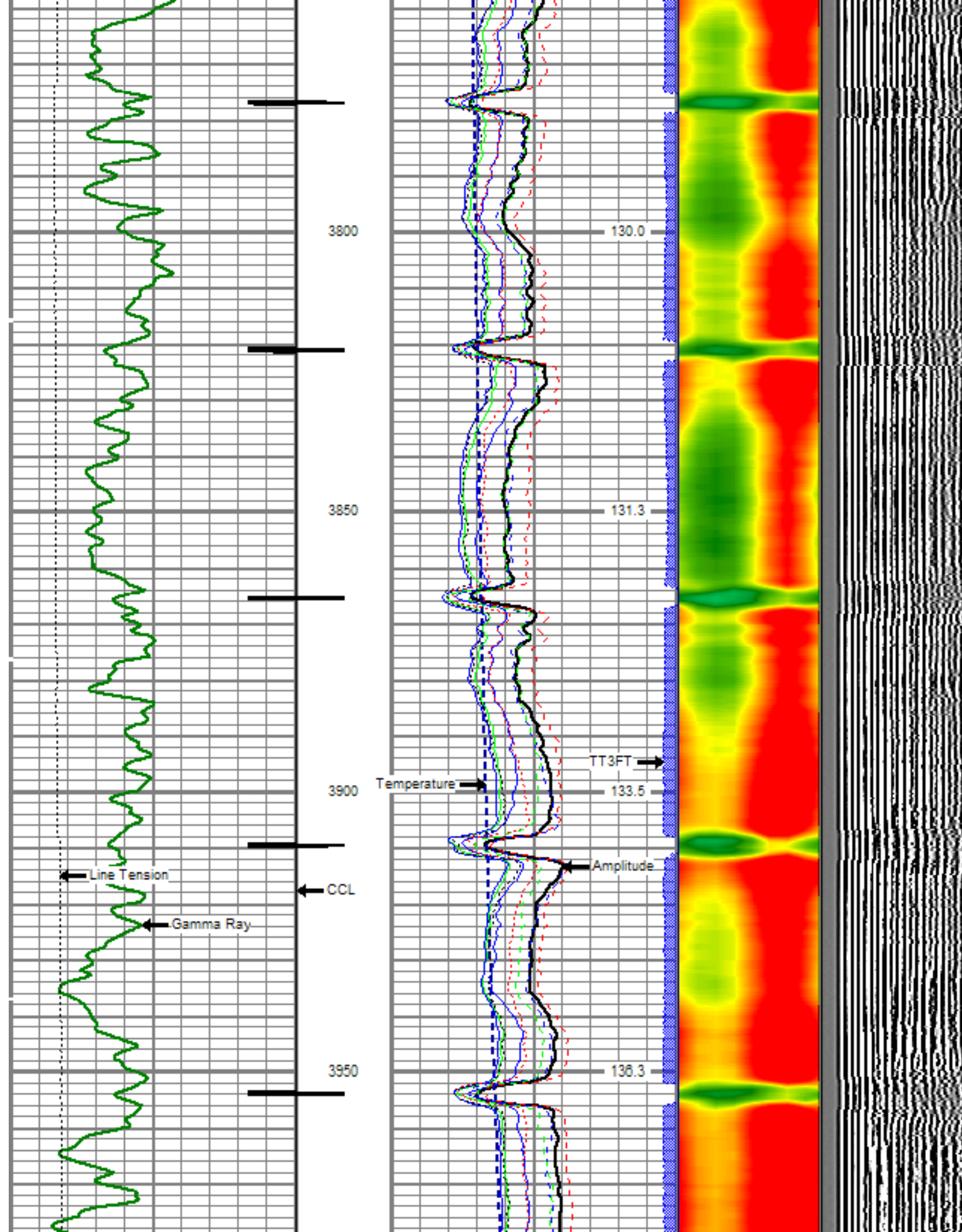
WE APPRECIATE YOUR BUSINESS, MESA WIRELINE LLC, GRAND JUNCTION CO. (970) 257-0

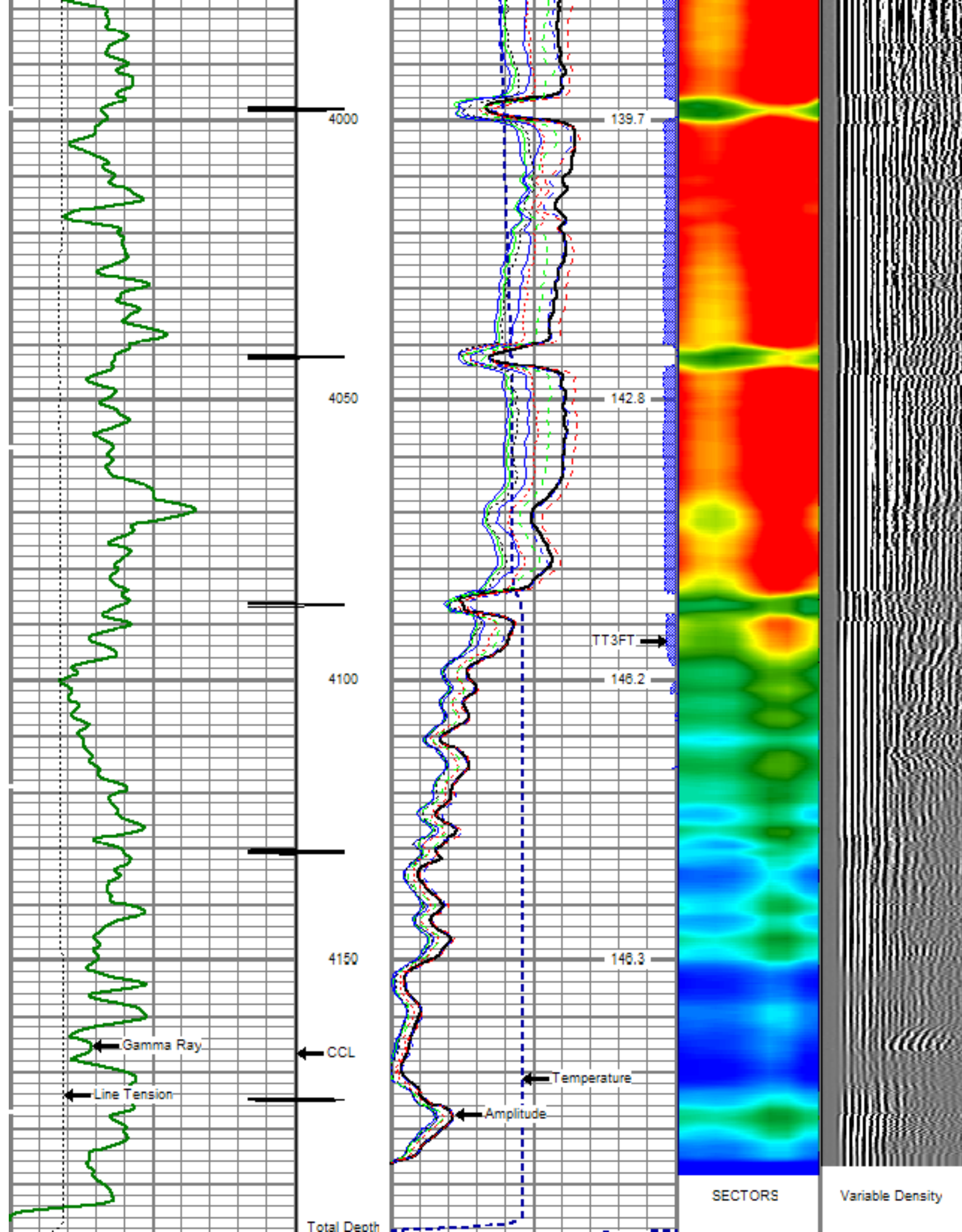



MAIN LOG SECTION




Database File: e_cou2410b.db
Dataset Pathname: pass4
Presentation Format: rbtfinal
Dataset Creation: Tue Sep 23 09:25:59 2008 by Log Std Casedhole 07122
Charted by: Depth in Feet scaled 1:240







0	GR (GAPI)	200	0	Amplitude (mV)	100	1	SECTORS	8	Variable Density	
0	LTEN (lb)	5000	0	temp (degF)	100	0		70	200	1200
		CCL	0	TT3FT (usec)	200					
				TEMP (degF)						

Sensor	Offset (ft)	Schematic	Description	Len (ft)	OD (in)	Wt (lb)
CCL	21.68		TITAN	1.02	1.44	1.00
			SNDX_CCL-SNDX_3_13_CCL (000001) CSS Gamma Ray/CCL (CCL Section)	1.92	3.13	11.02
			SONDEX	2.71	2.75	32.00
WVF3FT	13.92		SNDX_RBT-007 (000002) Radial Bond Tool - Analog 3 1/8	9.47	3.13	140.00
WVFS1	13.92					
WVFS2	13.92					
WVFS3	13.92					
WVFS4	13.92					
WVFS5	13.92					
WVFS6	13.92					
WVFS7	13.92					
WVFS8	13.92					
WVF5FT	12.92					
GR	5.17		SONDEX	2.71	2.75	32.00
			SNDX_GR-SNDX_3_13_GR (000001) Sondex Production Gamma Ray	2.94	3.13	22.05
			TEMP-SNDX_TEMP (SNDX_TEMP_01) Sondex Production Temperature Tool	3.14	1.63	10.00

