

HALLIBURTON

**Gamma Ray C.C.L.
Cement Bond V.D.L.**

Company Encana Oil & Gas (USA) Inc.
Well Lumry 31-24
Field Wattenberg
County Boulder State Colorado

Company Encana Oil & Gas (USA) Inc.
Well Lumry 31-24
Field Wattenberg
County Boulder State Colorado

API No.: 013-06576-00 Serv #:
Location: SHL: 854' FNL & 1010' FEL NE NE
BHL: 646' FNL & 660' FEL SE NE

Other Services

Sec: 24 Twp: 1N Rge: 69W

Permanent Datum GL Elevation 5081 Elevation
Log Measured From KB 15 Ft. above perm. datum K.B. 5096
Drilling Measured From KB G.L. 5095
G.L. 5081

Date @ Time Logged June 2, 2008 Type Fluid in Hole Water
Run No. One Density of Fluid Water
Depth - Driller Fluid Level Surface
Depth - Logger 8421 Cement Top Est. Logged 6798
Bottom - Logged Interval 8419 Equipment / Location 10842980 / Brighton
Top - Log Interval 6691 Recorded by Scott Dizmang
Max. Recorded Temp. NOT RECORDED Witnessed by Gary Cummings
CEMENTING DATA Surface Protection String
String

Date / Time Cemented Primary / Squeeze D.V. Tool @ TOC
Expected Compressive Strength psi@ hrs
Cement Volume psi@ hrs
Cement Type / Weight 50/50 Premium /
Formulation 1,340 Yield 1.5 Yield
Mud Type / Mud Wgt. /

Borehole Record				Casing & Tubing Record			
Run Number	Bit	From	To	Size	Weight	From	To
				4.5	11.6	TD	Surface

<<< Fold Here >>>

HALLIBURTON DOES NOT GUARANTEE THE ACCURACY OF ANY INTERPRETATION OF THE LOG DATA, CONVERSION OF LOG DATA TO PHYSICAL ROCK PARAMETERS OR RECOMMENDATIONS WHICH MAY BE GIVEN BY HALLIBURTON PERSONNEL OR WHCIH APPEAR ON THE LOG OR IN ANY OTHER FORM. ANY USER OF SUCH DATA, INTERPRETATIONS, CONVERSIONS, OR RECOMMENDATIONS AGREES THAT HALLIBURTON IS NOT RESPONSIBLE EXCEPT WHERE DUE TO GROSS NEGLIGENCE OR WILLFUL MISCONDUCT, FOR ANY LOSS, DAMAGES, OR EXPENSES RESULTING FROM THE USE THEREOF.

Comments

Database File: lumry31-24.db
Dataset Pathname: pass2
Presentation Format: cbldig
Dataset Creation: Mon Jun 02 13:05:27 2008 by Log Halliburton Casedho

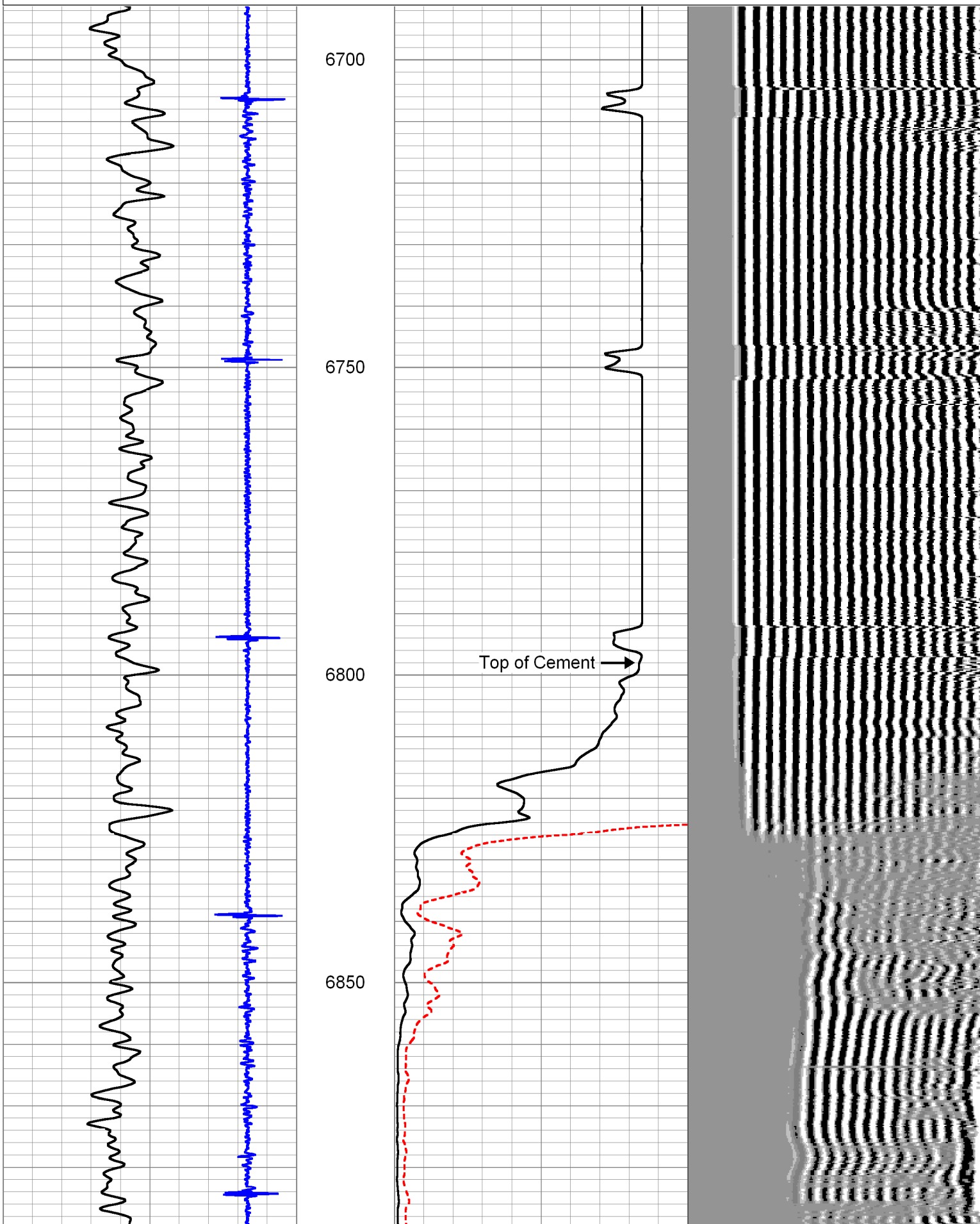
Charted by:

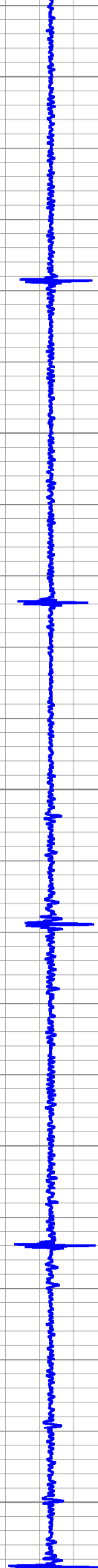
Depth in Feet scaled 1:240

5	Collar Locator	-1
0	Gamma Ray (GAPI)	300

0	Amplified Amplitude (mV)	30
0	Amplitude (mV)	100

200 Variable Density 1200





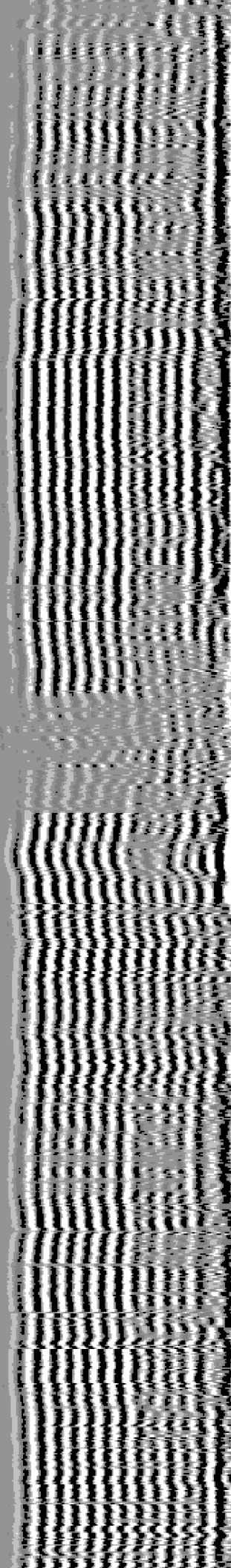
6900

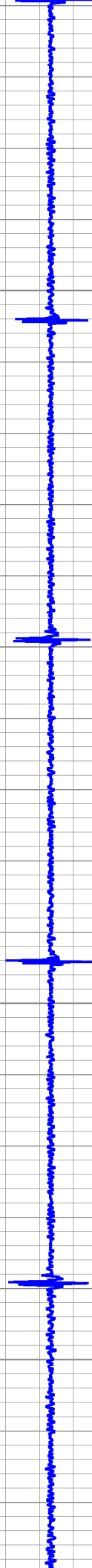
6950

7000

7050

7100





7150

7200

7250

7300

