



**SUPERIOR**  
WELL SERVICES  
Black Lick, Pa.  
Mercer, Pa.  
Wooster, Oh.  
Cleveland, Ok.  
Trinidad, Co.

## CEMENT BOND LOG

Company XTO Energy Inc.  
Well New Elk 25-10-2  
Field Purgatorie River  
County Las Animas State CO

Location:

API # : 05 071 09604 00

Other Services

SEC 25 TWP 33S RGE 68W

Permanent Datum

Ground Level

Elevation

7408'

Log Measured From

Ground Level

Ground Level

K.B. -----  
D.F. -----  
G.L. 7408'

Company XTO Energy Inc.  
Well New Elk 25-10-2  
Field Purgatorie River  
County Las Animas  
State CO

Date 6-30-08

Run Number One

Depth Driller 1850'

Depth Logger 1768'

Bottom Logged Interval 1766'

Top Log Interval Surface

Open Hole Size 7 7/8

Type Fluid Water

Density / Viscosity ///

Max. Recorded Temp. ///

Estimated Cement Top Surface

Time Well Ready R.O.A.

Time Logger on Bottom 2:00 P.M.

Equipment Number T070-1

Location Trinidad

Recorded By C. Sinerros

Witnessed By Mr. Steve Dominguez

Borehole Record

Run Number Bit From To Size Weight From To

Casing Record Size Wgt/Ft Top Bottom

Surface String 8 5/8" 00' 632'

Prot. String 5.5" 00' 1815'

Production String

Liner

<<< Fold Here >>>

All interpretations are opinions based on inferences from electrical or other measurements and we cannot and do not guarantee the accuracy or correctness of any interpretation, and we shall not, except in the case of gross or willful negligence on our part, be liable or responsible for any loss, costs, damages, or expenses incurred or sustained by anyone resulting from any interpretation made by any of our officers, agents or employees. These interpretations are also subject to our general terms and conditions set out in our current Price Schedule.

### Comments

#### Well Directions:


Second Bosque entrance, straight across railroad tracks, at Y stay right to Apache canyon, follow main road thru two locations, at Y at 2 green gates, stay left, thru green gate, end on first drive thru location.

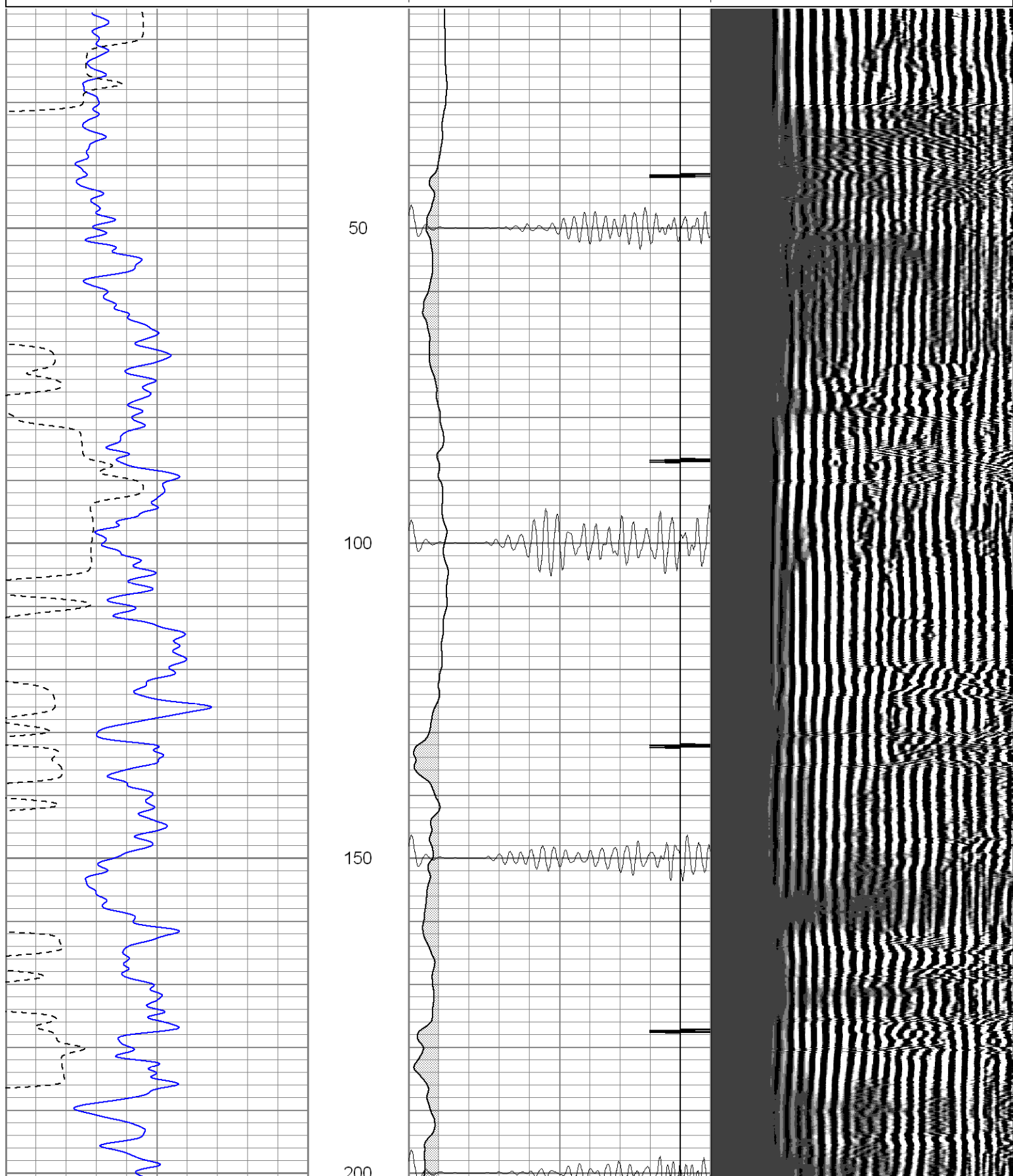


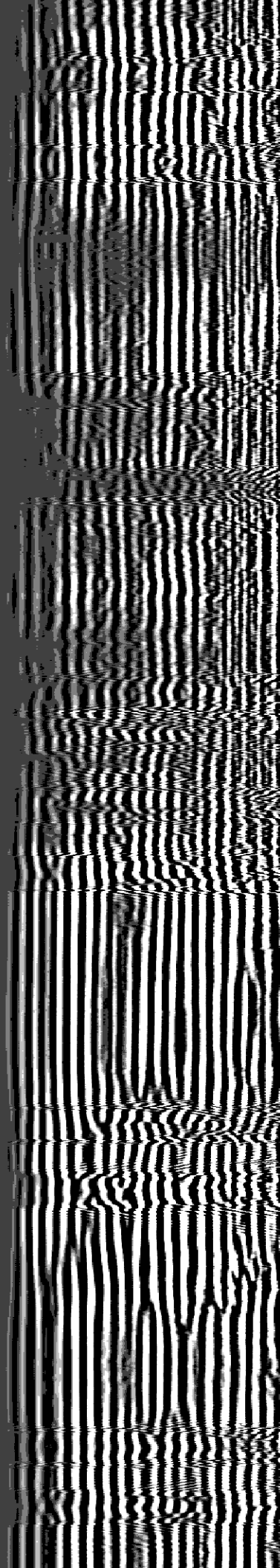
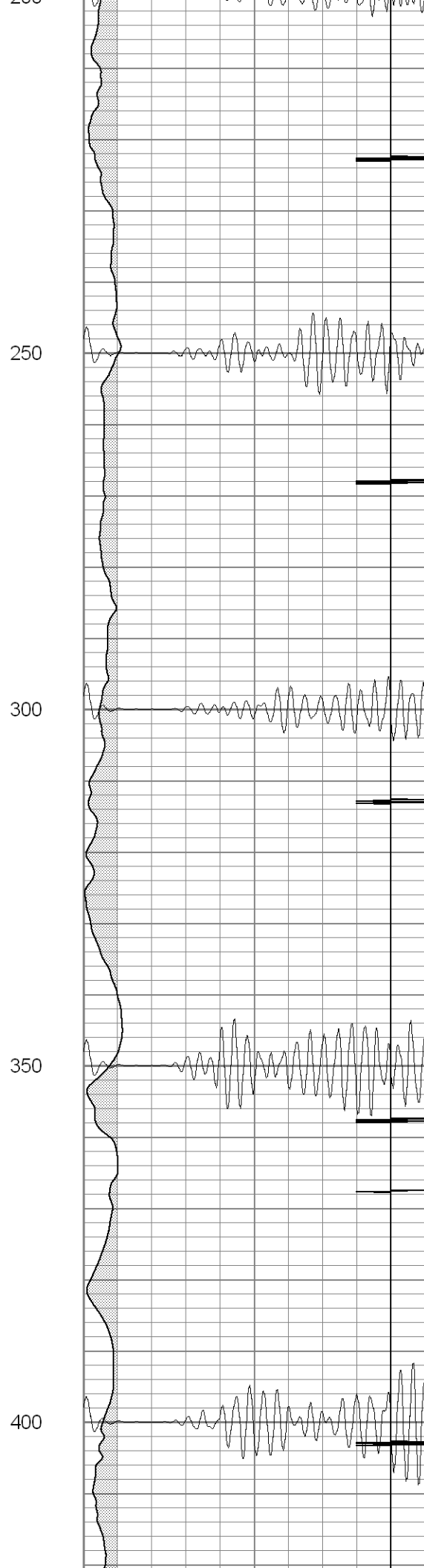
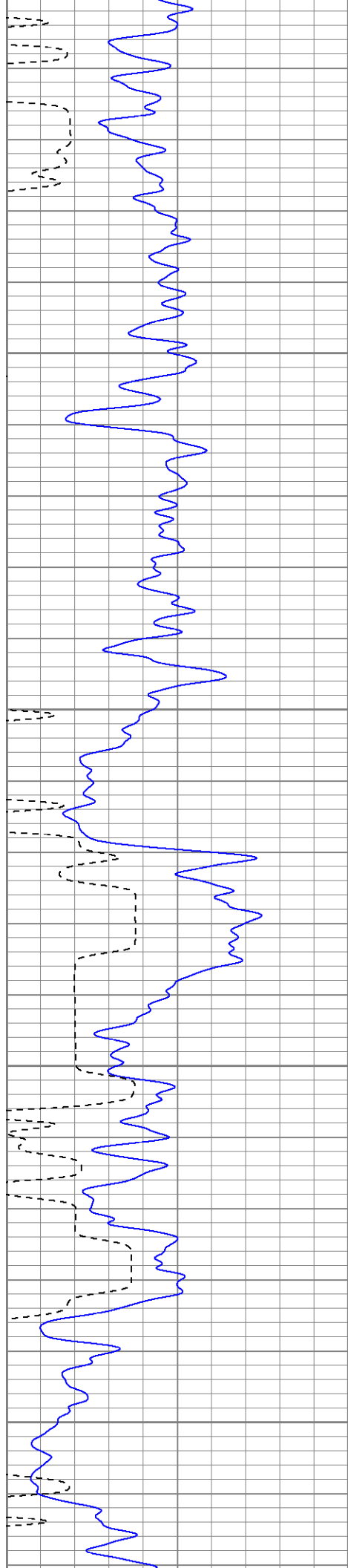
**SUPERIOR**  
Black Lick, Pa.  
Mercer, Pa.  
Wooster, Oh.  
Cleveland, Ok.  
Trinidad, Co.

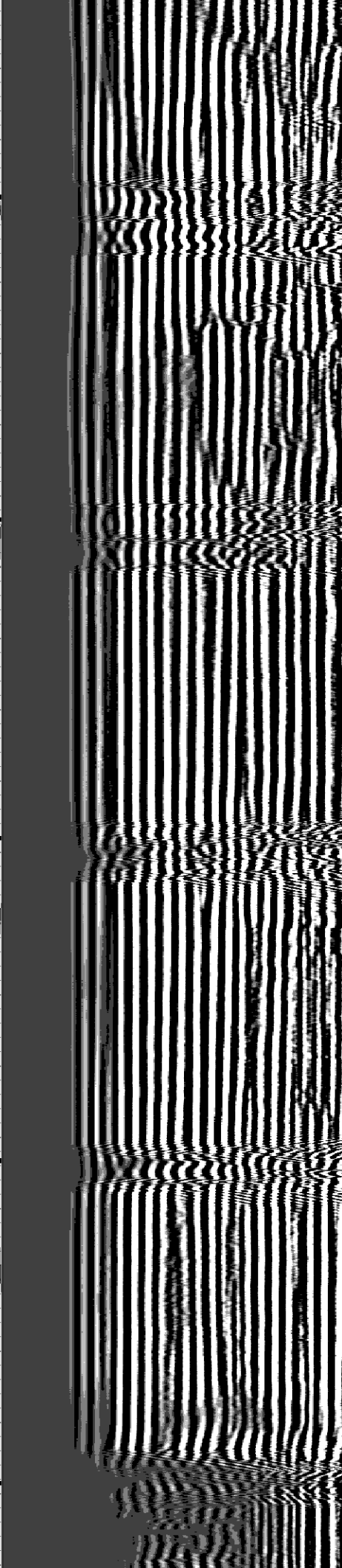
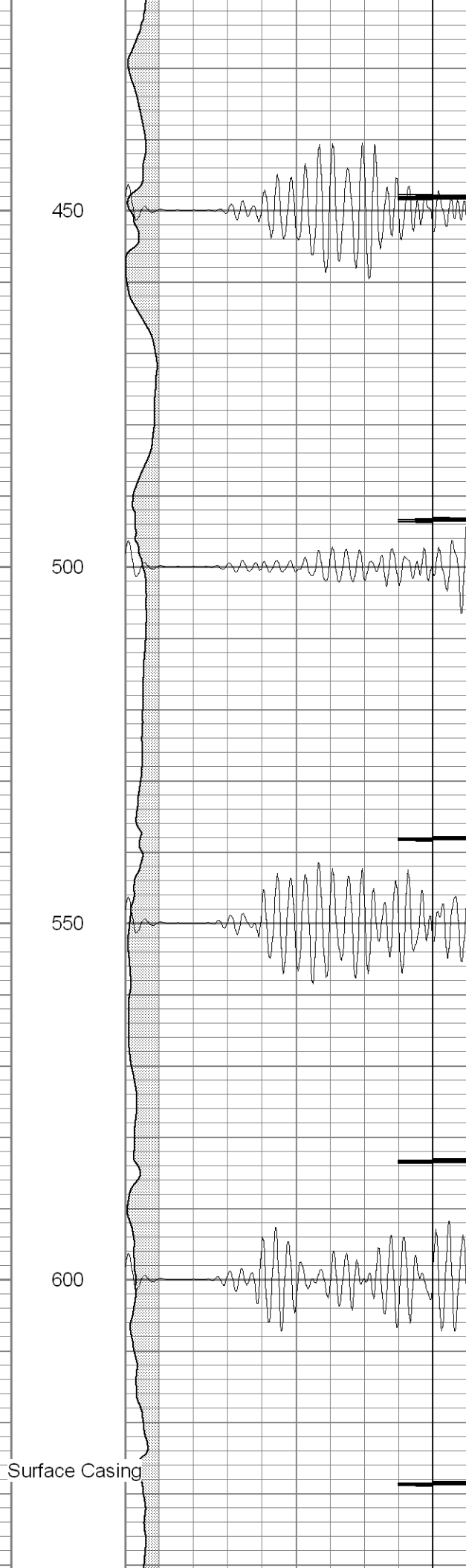
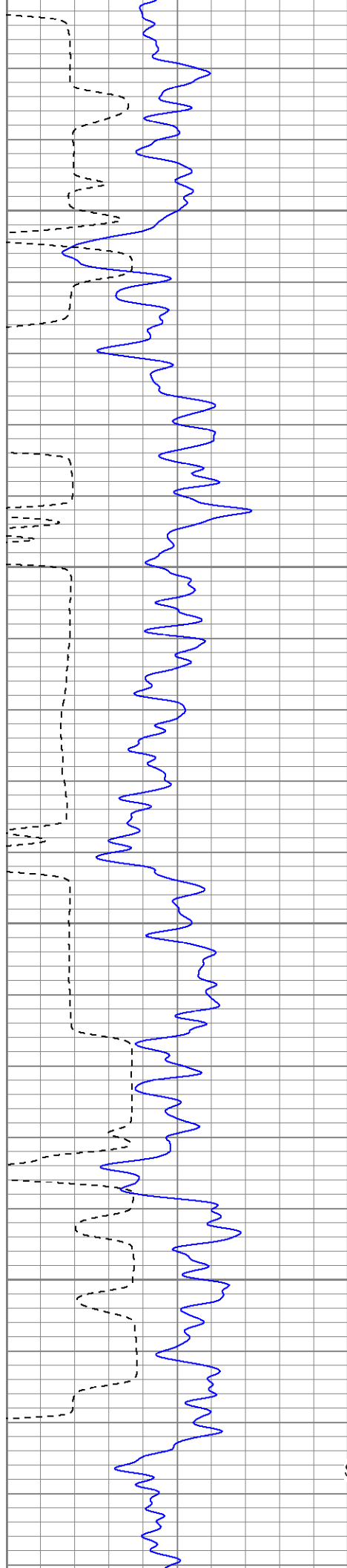
# 1000 PSI

Database File: newelk2510263008b.db  
Dataset Pathname: pass2.1  
Presentation Format: cblrt  
Dataset Creation: Mon Jun 30 15:01:10 2008 by Calc Open-Cased 070814  
Charted by: Depth in Feet scaled 1:240

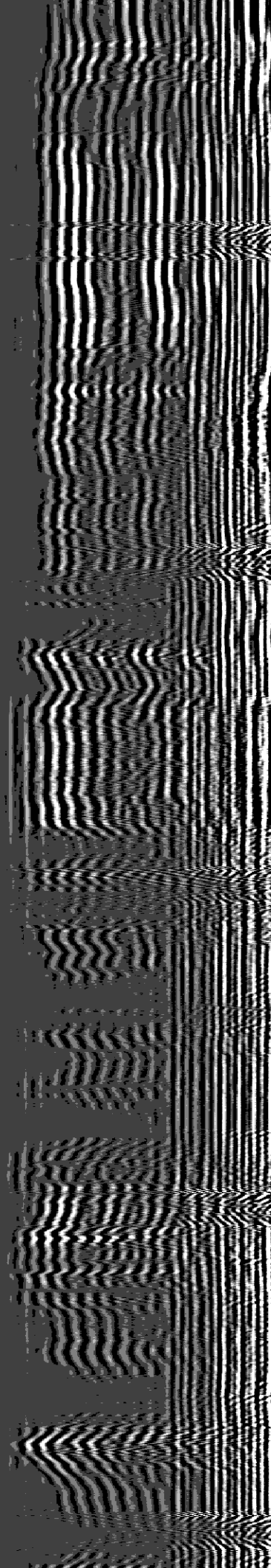
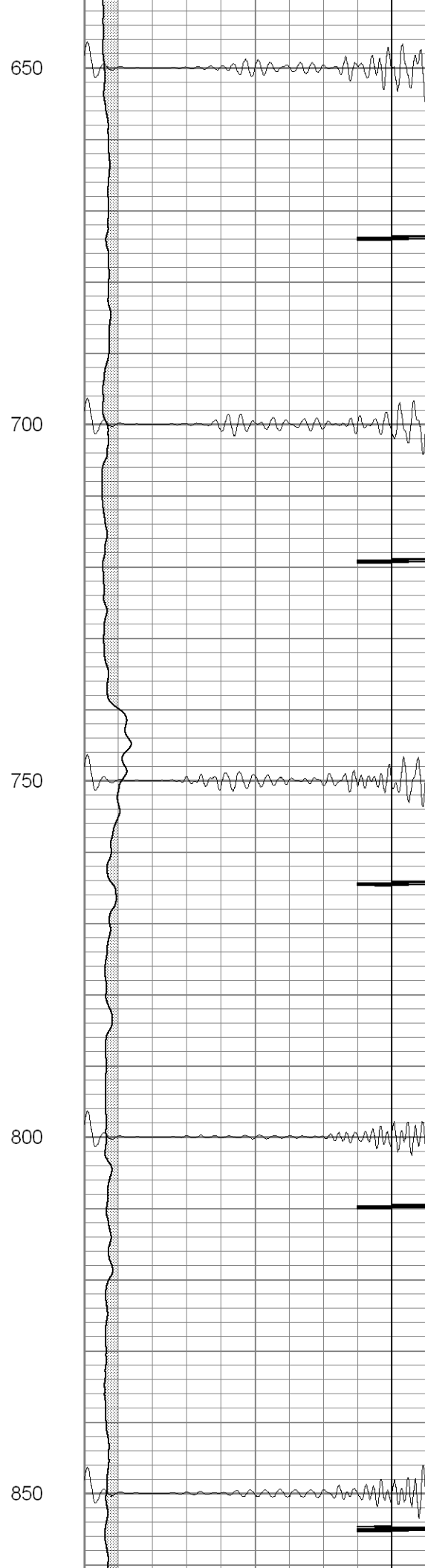
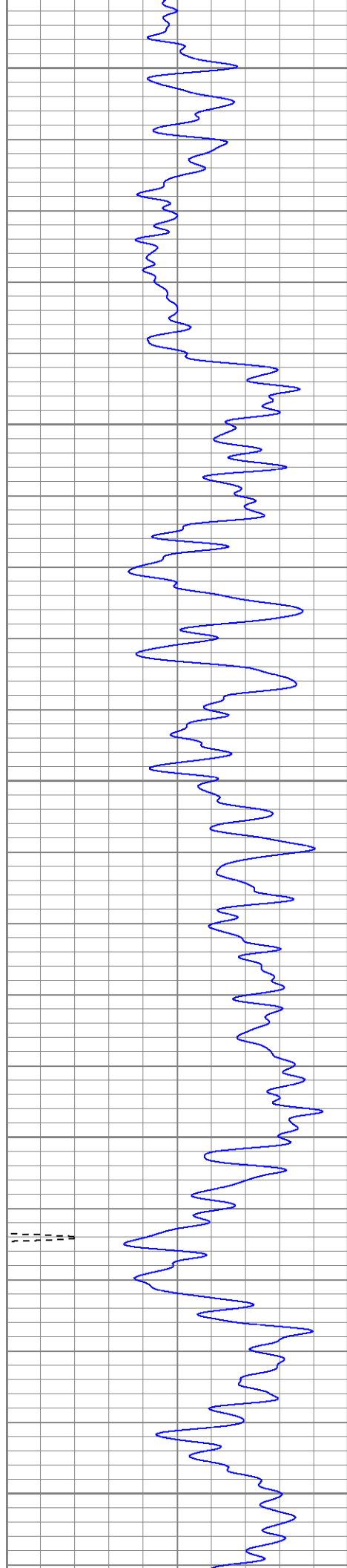
0	GR (GAPI)	200	0	AMP3 (mV)	100	200	Variable Density	1200
400	TT3 (usec)	200	18	CCL	-2			
<hr style="border-top: 1px dashed black;"/>			100	CBL5	1200			

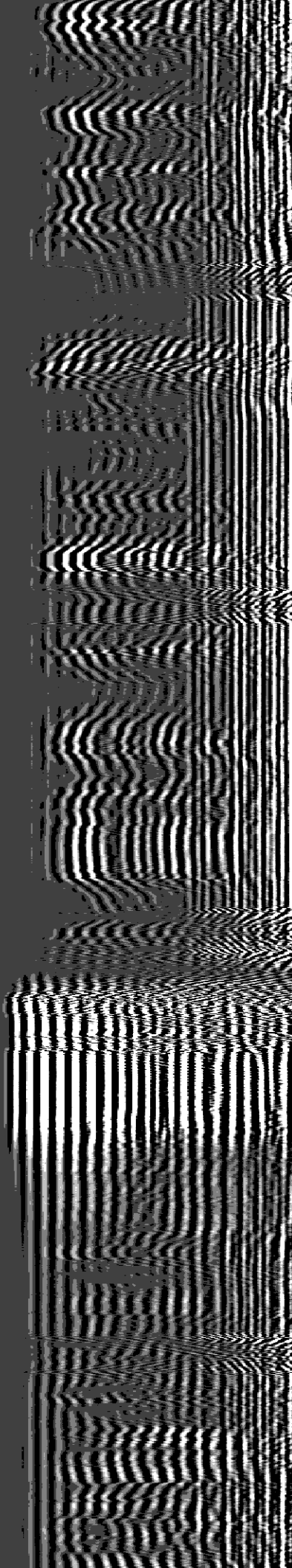
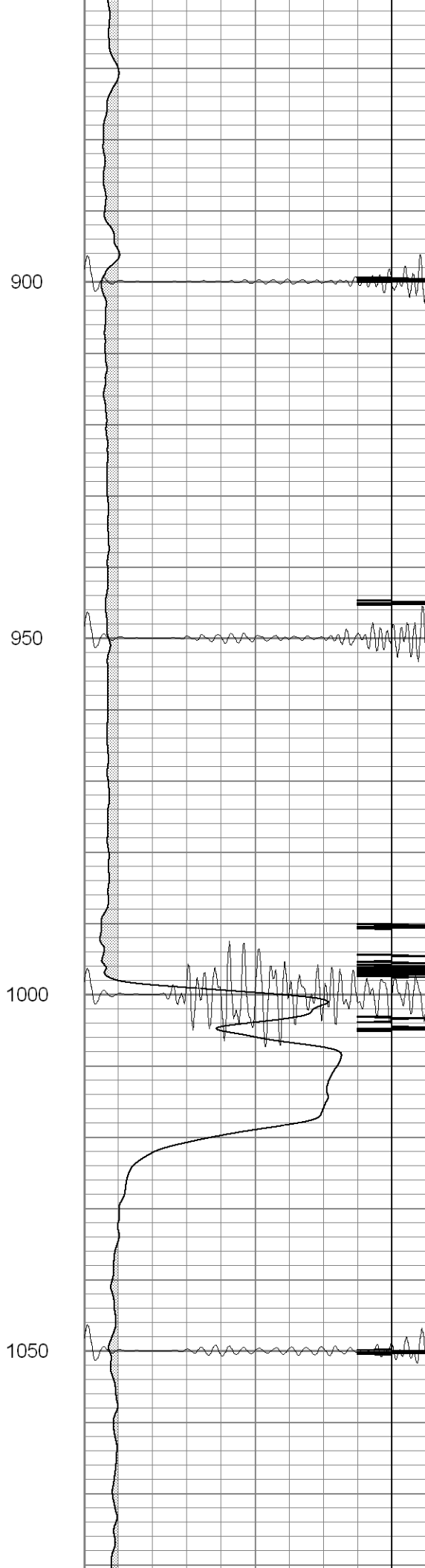
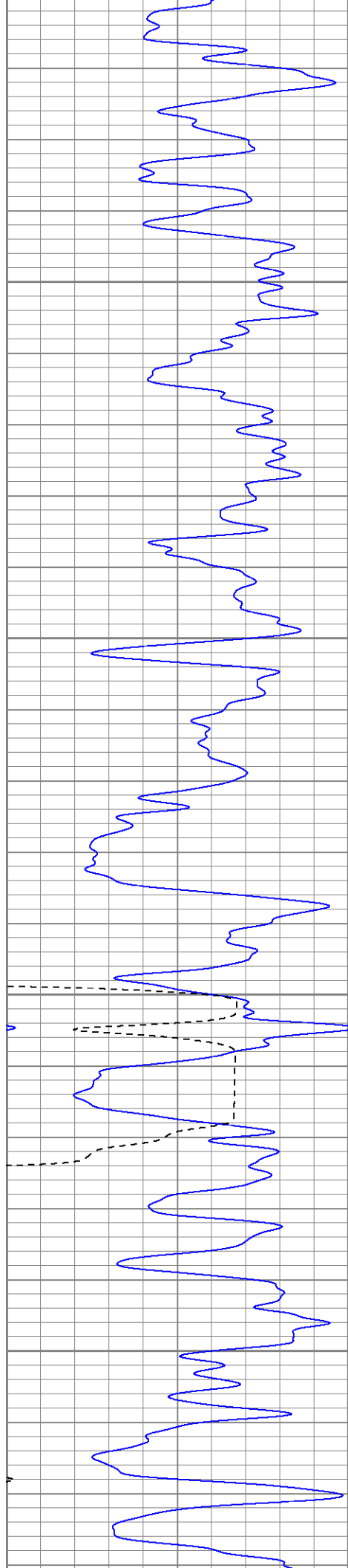


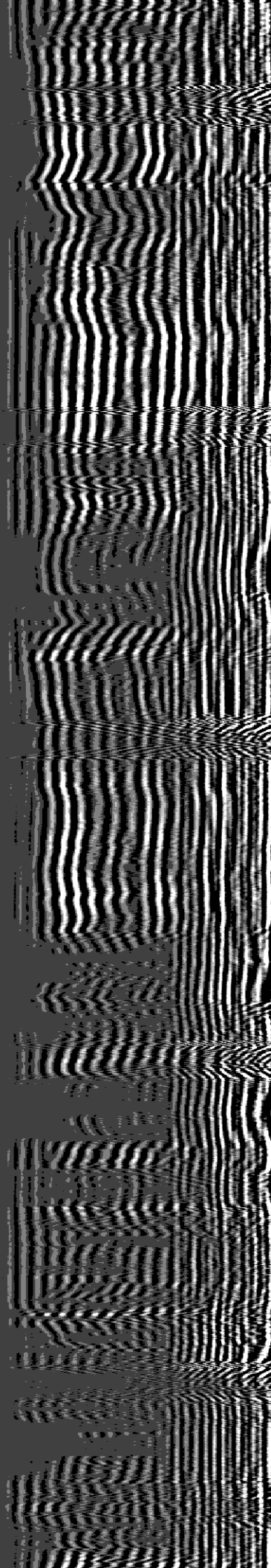
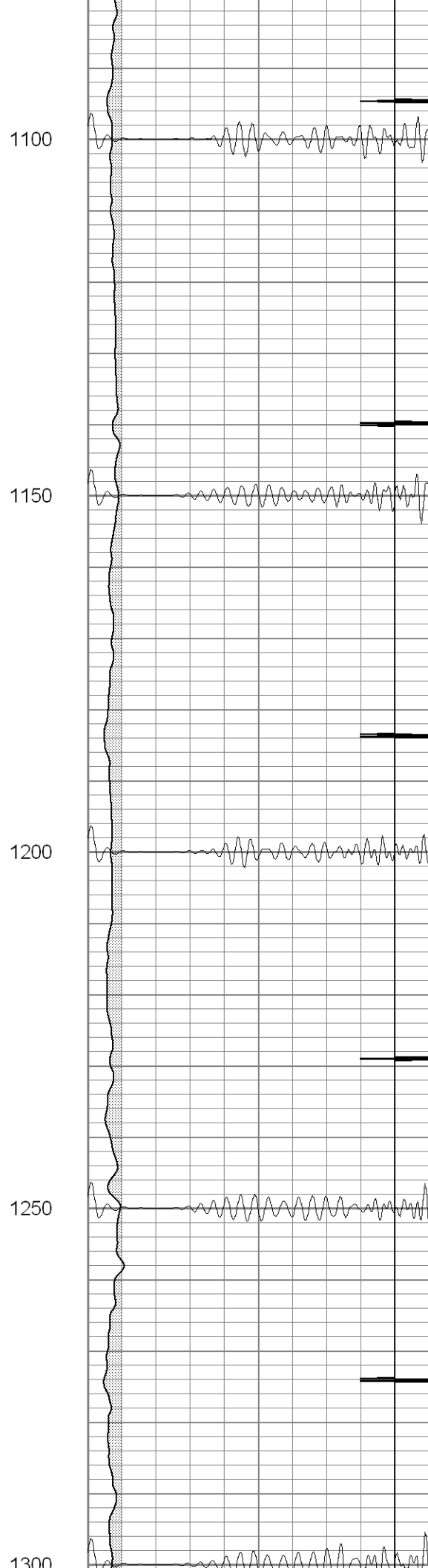




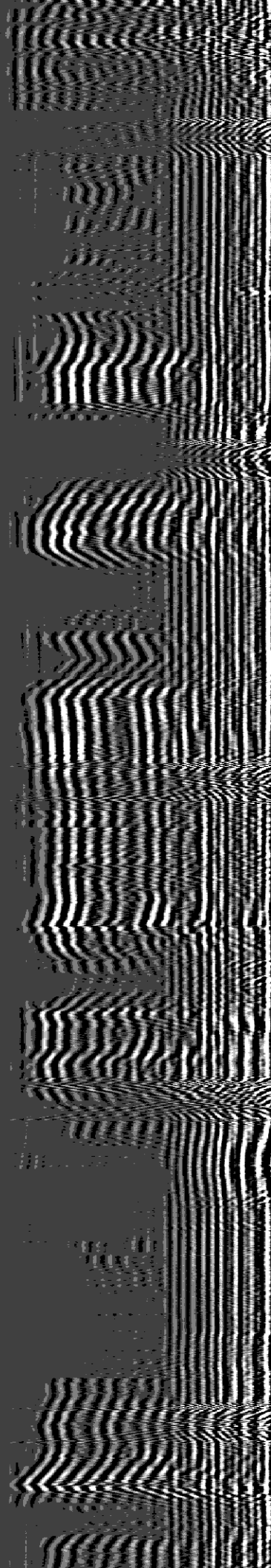
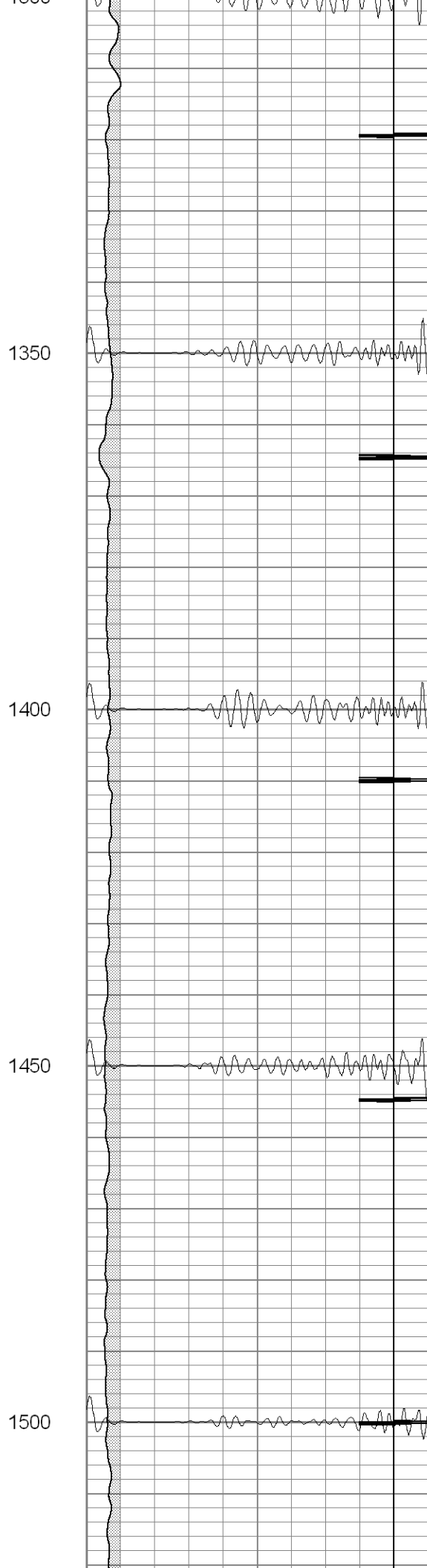
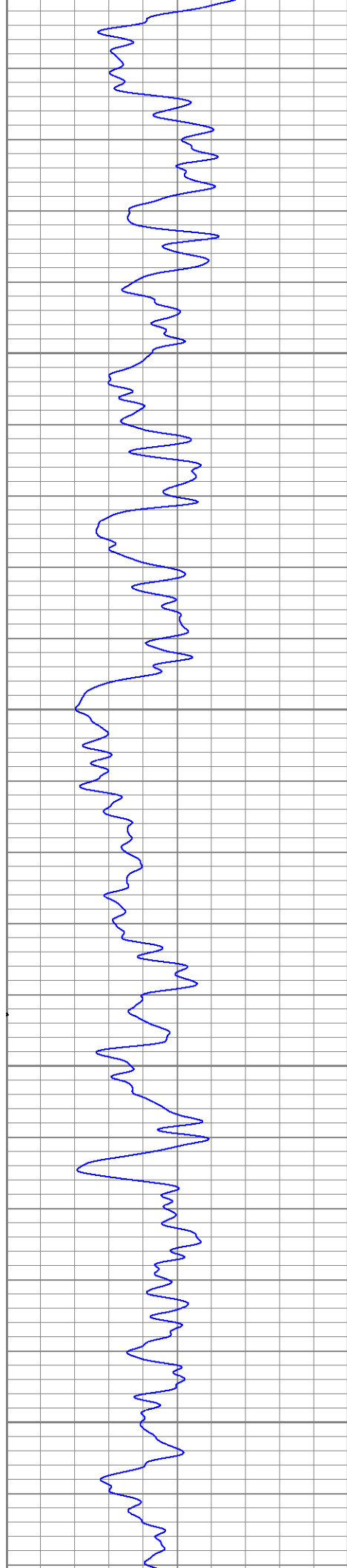




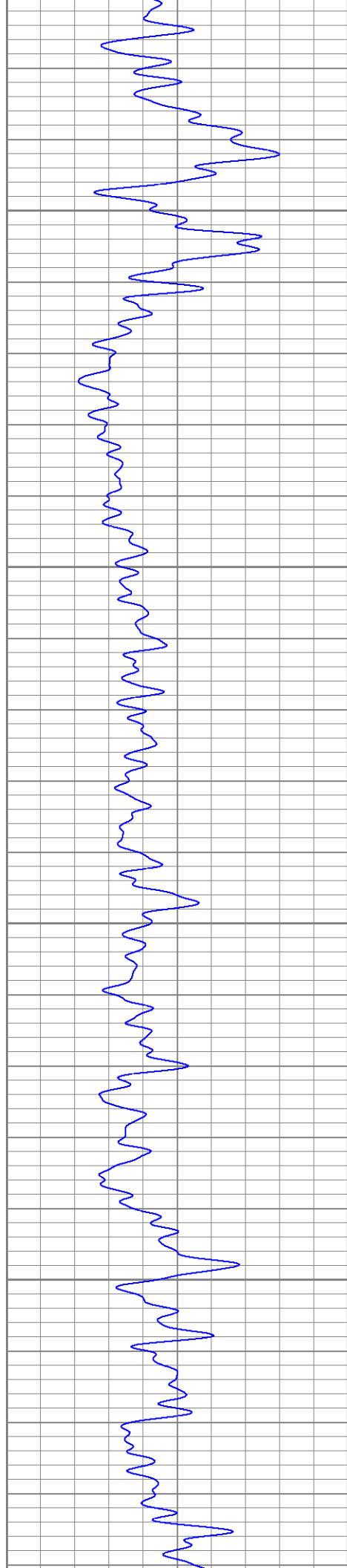












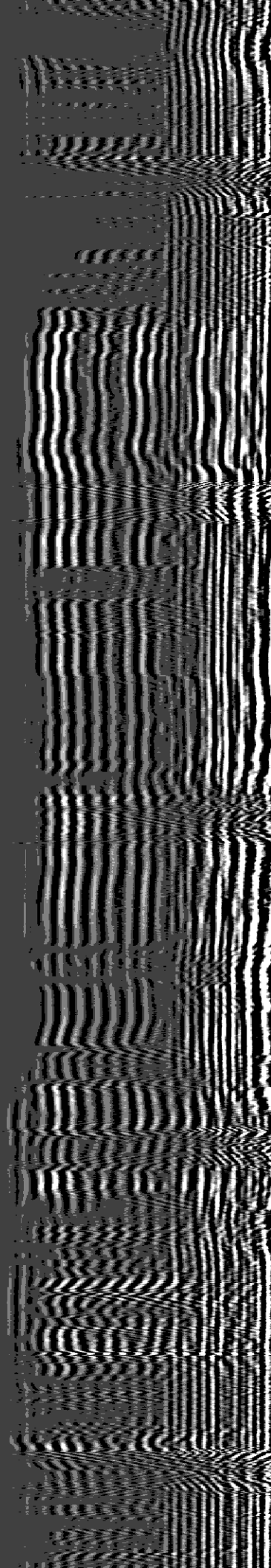
1550

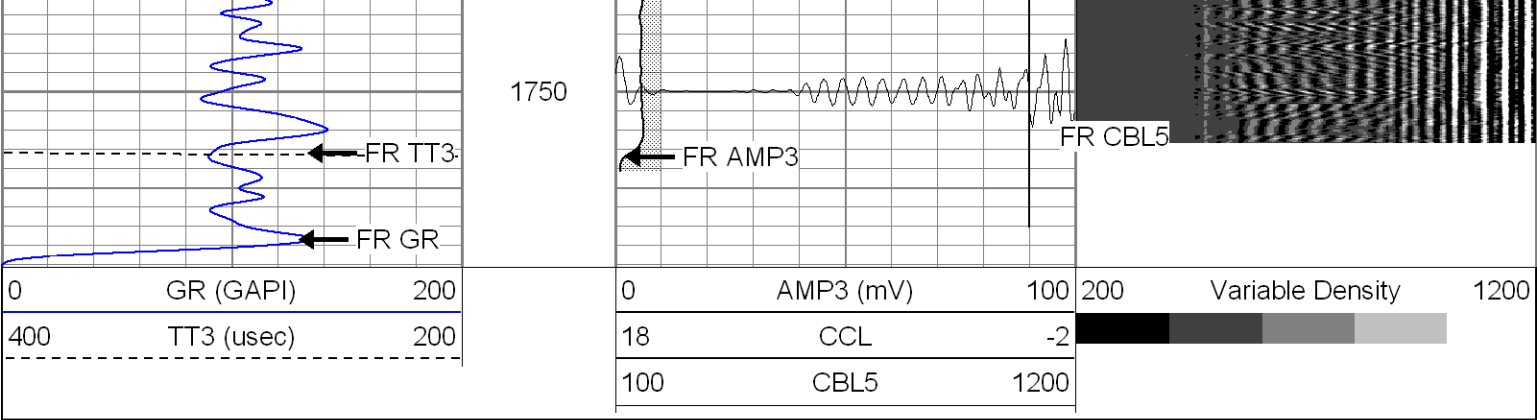
1600

1650

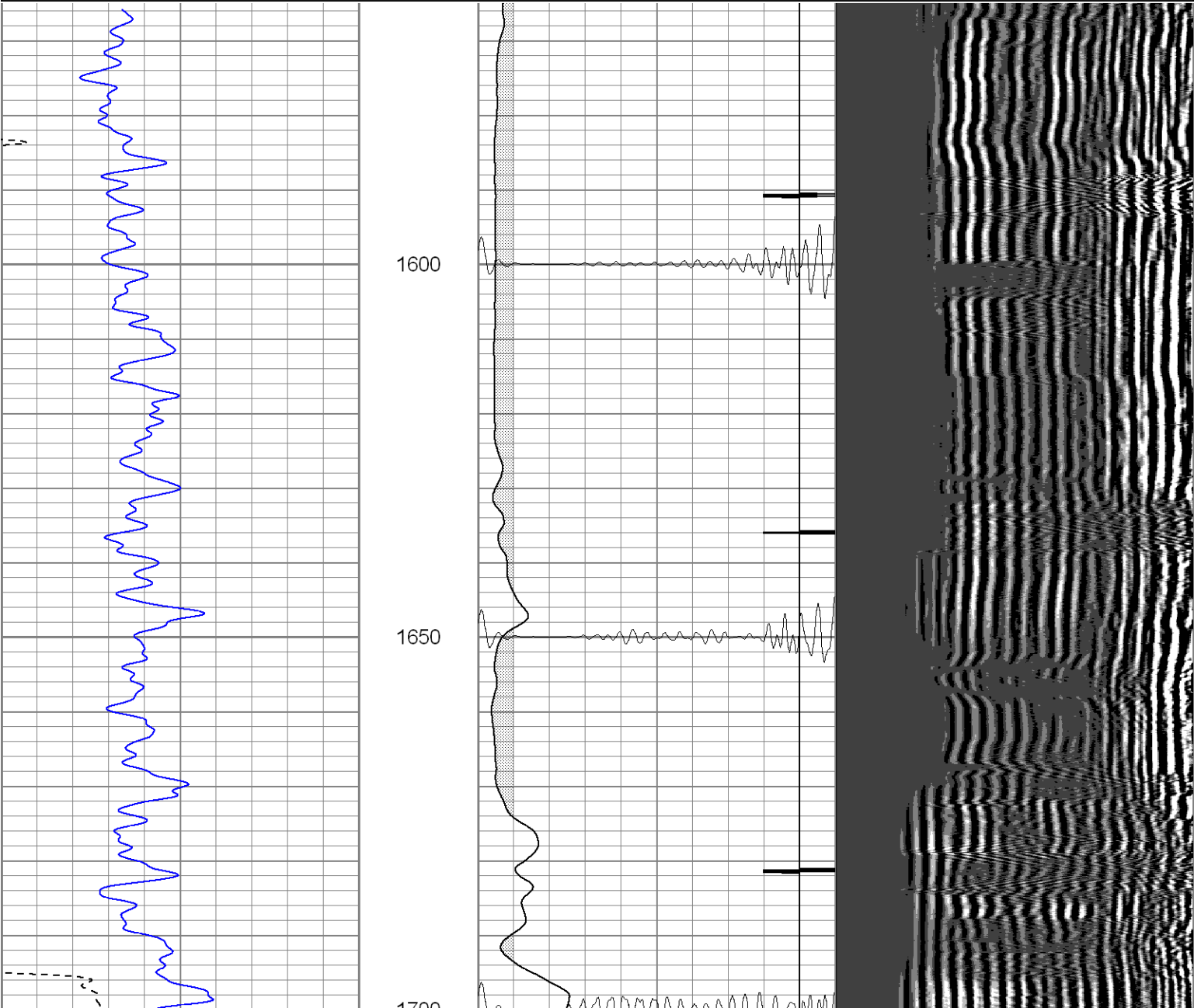
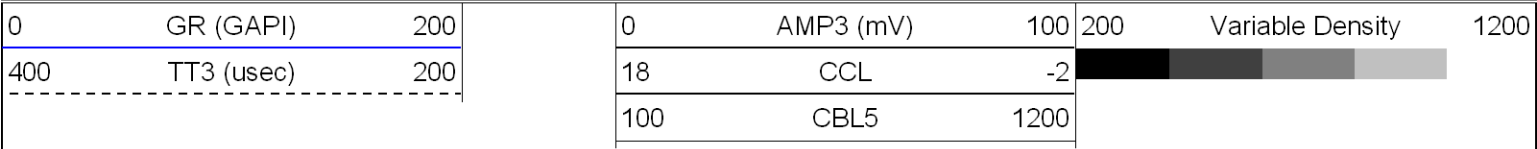
1700

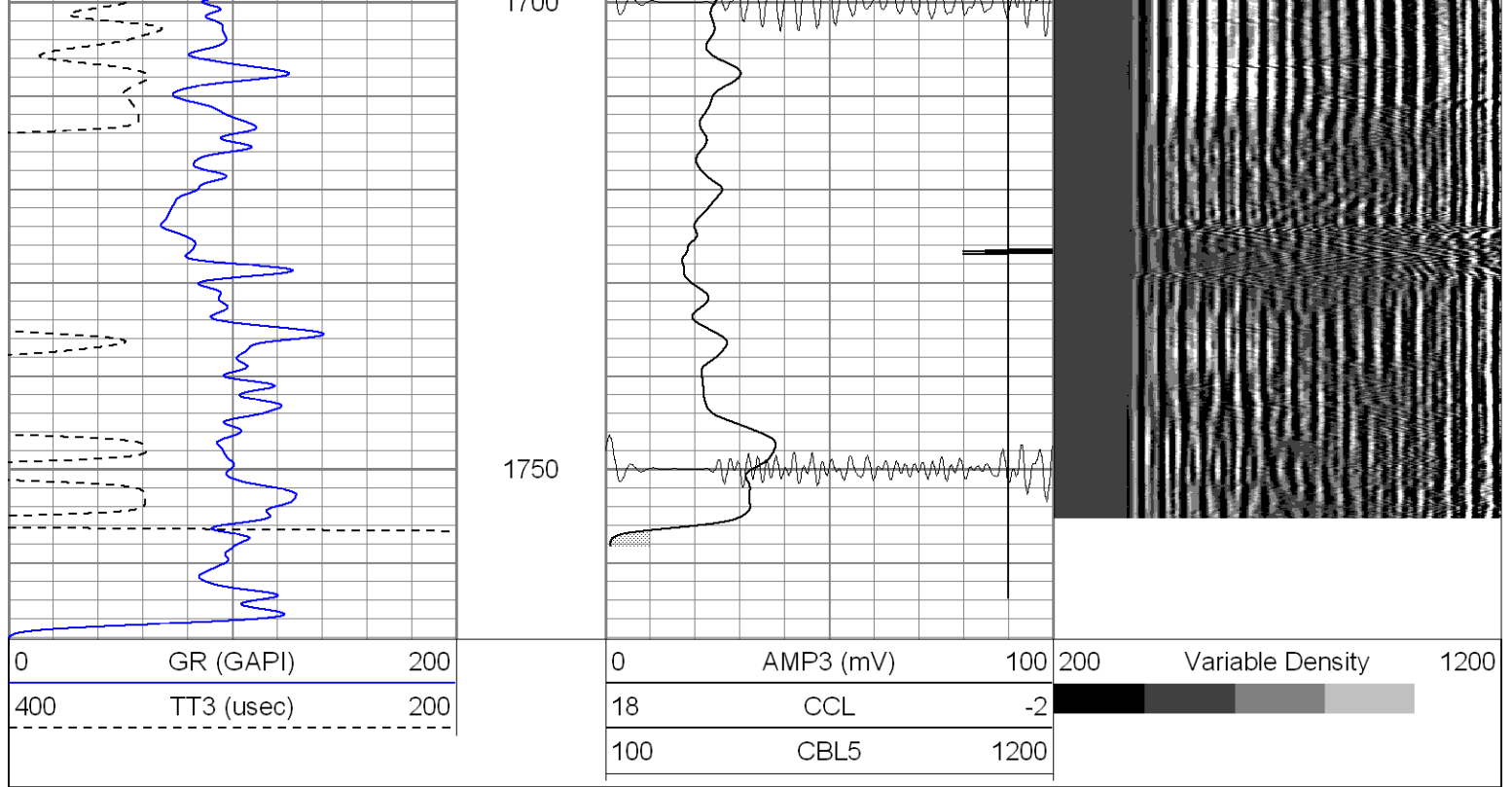
FR CCL





Database File: newelk2510263008b.db  
Dataset Pathname: pass1  
Presentation Format: cblrt  
Dataset Creation: Mon Jun 30 14:10:49 2008 by Log Open-Cased 070814  
Charted by: Depth in Feet scaled 1:240





Calibration Report			
Database File:	newelk2510263008b.db		
Dataset Pathname:	pass1		
Dataset Creation:	Mon Jun 30 14:10:49 2008 by Log Open-Cased 070814		
Gamma Ray Calibration Report			
Serial Number:	2.75		
Tool Model:	Titan2.75		
Performed:	Tue Jun 10 12:49:53 2008		
Calibrator Value:	1.0	GAPI	
Background Reading:	0.0	cps	
Calibrator Reading:	1.0	cps	
Sensitivity:	1.0000	GAPI/cps	
Cement Bond Log Calibration Report			
Serial Number:	Titan4		
Tool Model:	T4		
Performed:	Tue Jun 10 12:48:42 2008		
Depth:	78.9548	ft	
Casing Diameter:	5.5	in	
	3' Spacing	5' Spacing	
Signal Zero:	1	1	mV
Calibrated Amplitude:	82	82	mV
Reading at Signal Zero:	-0.00383301	-0.00368652	V
Reading in Free Pipe:	1.57312	1.97876	V
Gain:	51.3649	40.8586	
Offset:	1.19688	1.15063	

Sensor	Offset (ft)	Schematic	Description	Len (ft)	OD (in)	Wt (lb)

Item	Length (ft)	Weight (lb)	Material	Notes
WVF5	12.82			
WVF3	11.82			
CCL	4.27			
GR	1.42			
Dataset: newelk2510263008b.db: field/well/run1/pass1 Total Length: 20.38 ft Total Weight: 205.00 lb O.D. 2.75 in				