



SUPERIOR
Black Lick, Pa.
Mercer, Pa.
Wooster, Oh.
Cleveland, Ok.
Trinidad, Co.

DUAL INDUCTION LOG

Company XTO Energy Inc.
Well New Elk 25-10-2
Field Purgatoire River
County Las Animas State Colorado

Location: API # : 05 071 09604 00

2200' FSL & 2369' FEL

SEC 25 TWP 33S RGE 68W

Permanent Datum Ground Level Elevation 7408'
Log Measured From Ground Level
Drilling Measured From Ground Level

Other Services
cdl
neu
Elevation
K.B. -----
D.F. -----
G.L. 7408'

Date 6-22-08

Run Number One

Depth Driller 1850'

Depth Logger 1855'

Bottom Logged Interval 1853'

Top Log Interval Surface Casing

Casing Driller 8 5/8" @ 632'

Casing Logger 627'

Bit Size 7 7/8"

Type Fluid in Hole Water

Density / Viscosity ///

pH / Fluid Loss ///

Source of Sample ///

Rm @ Meas. Temp ///

Rmf @ Meas. Temp ///

Rmc @ Meas. Temp ///

Source of Rmf / Rmc ///

Rm @ BHT ///

Time Circulation Stopped 2:00 P.M.

Time Logger on Bottom 5:45 P.M.

Maximum Recorded Temperature 96 DEG F

Equipment Number T0701

Location Trinidad

Recorded By C. Sinerros

Witnessed By Mr. Don Johnson

<<< Fold Here >>>

All interpretations are opinions based on inferences from electrical or other measurements and we cannot and do not guarantee the accuracy or correctness of any interpretation, and we shall not, except in the case of gross or willful negligence on our part, be liable or responsible for any loss, costs, damages, or expenses incurred or sustained by anyone resulting from any interpretation made by any of our officers, agents or employees. These interpretations are also subject to our general terms and conditions set out in our current Price Schedule.

Comments

Well Directions:

Second Bosque entrance, straight across railroad tracks, at Y stay right to Apache canyon, follow main road thru two locations, at Y at 2 green gates, stay left, thru green gate, end on first drive thru location.



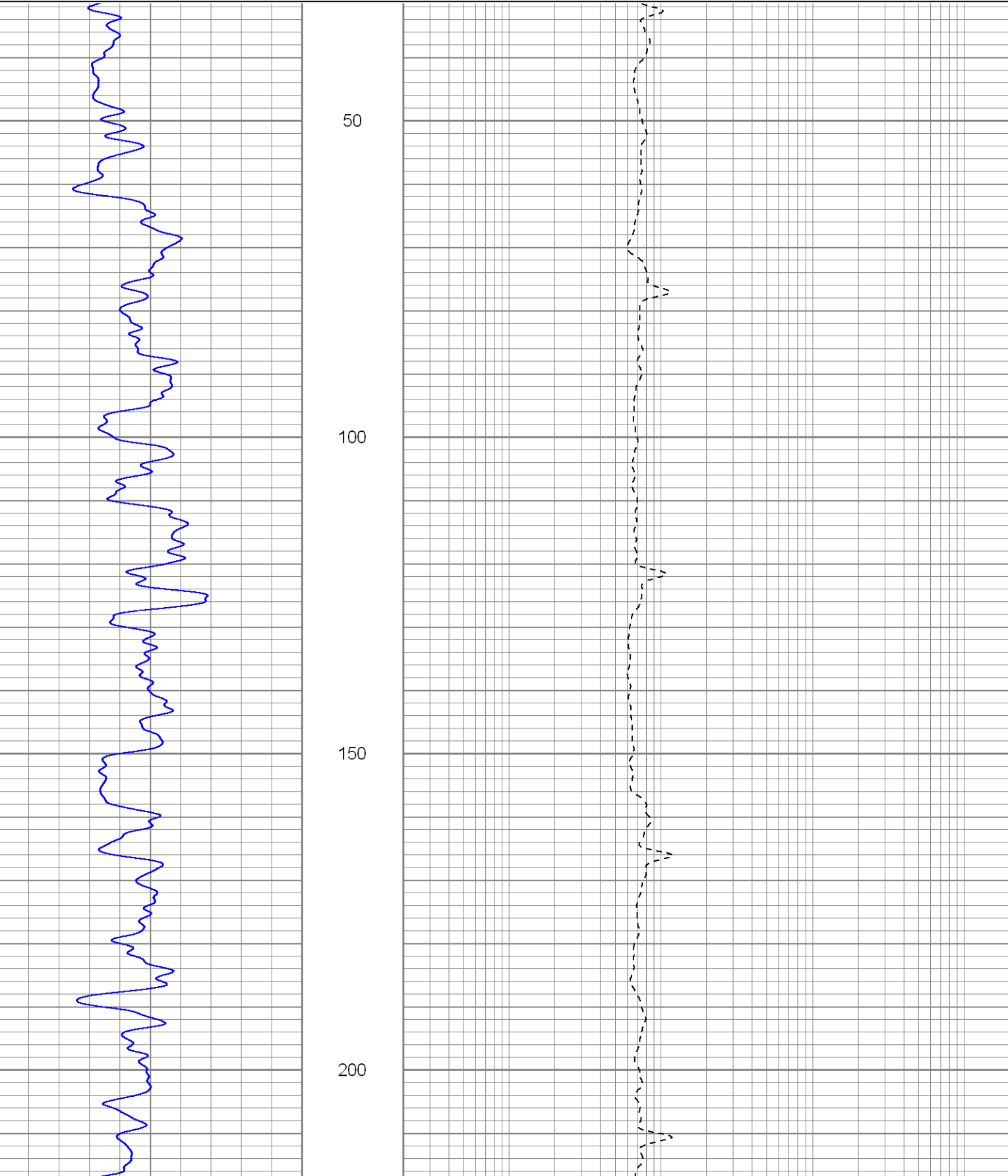
SUPERIOR
Black Lick, Pa.
Mercer, Pa.
Wooster, Oh.
Cleveland, Ok.
Trinidad, Co.

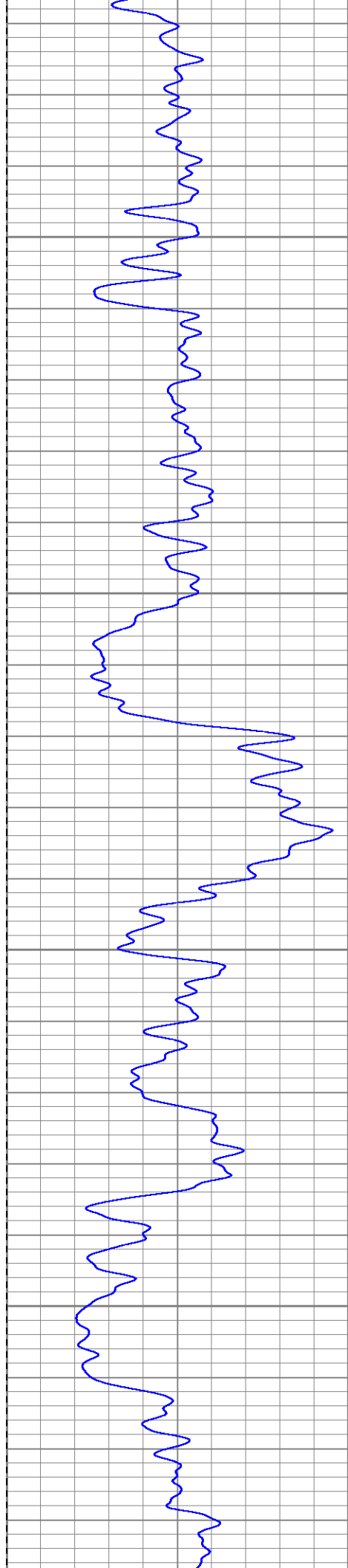
Main Pass

Database File: xtone25102.db
Dataset Pathname: pass4.1
Presentation Format: dil
Dataset Creation: Mon Jun 23 08:04:56 2008 by Calc Open-Cased 070814
Charted by: Depth in Feet scaled 1:240

0	GR (GAPI)	200
-200	SP (mV)	0

0.2	RILD (Ohm-m)	2000
0.2	RILM (Ohm-m)	2000
0.2	RLL3 (Ohm-m)	2000



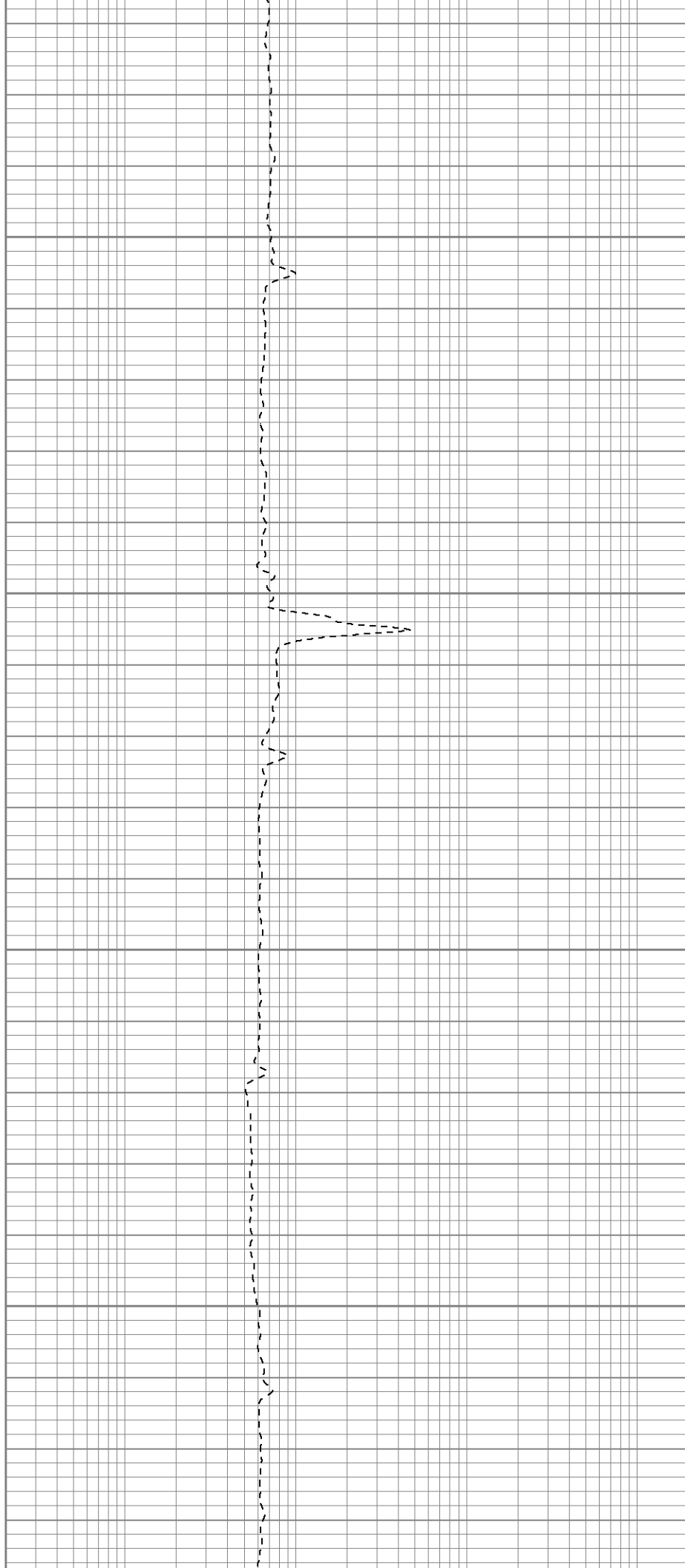


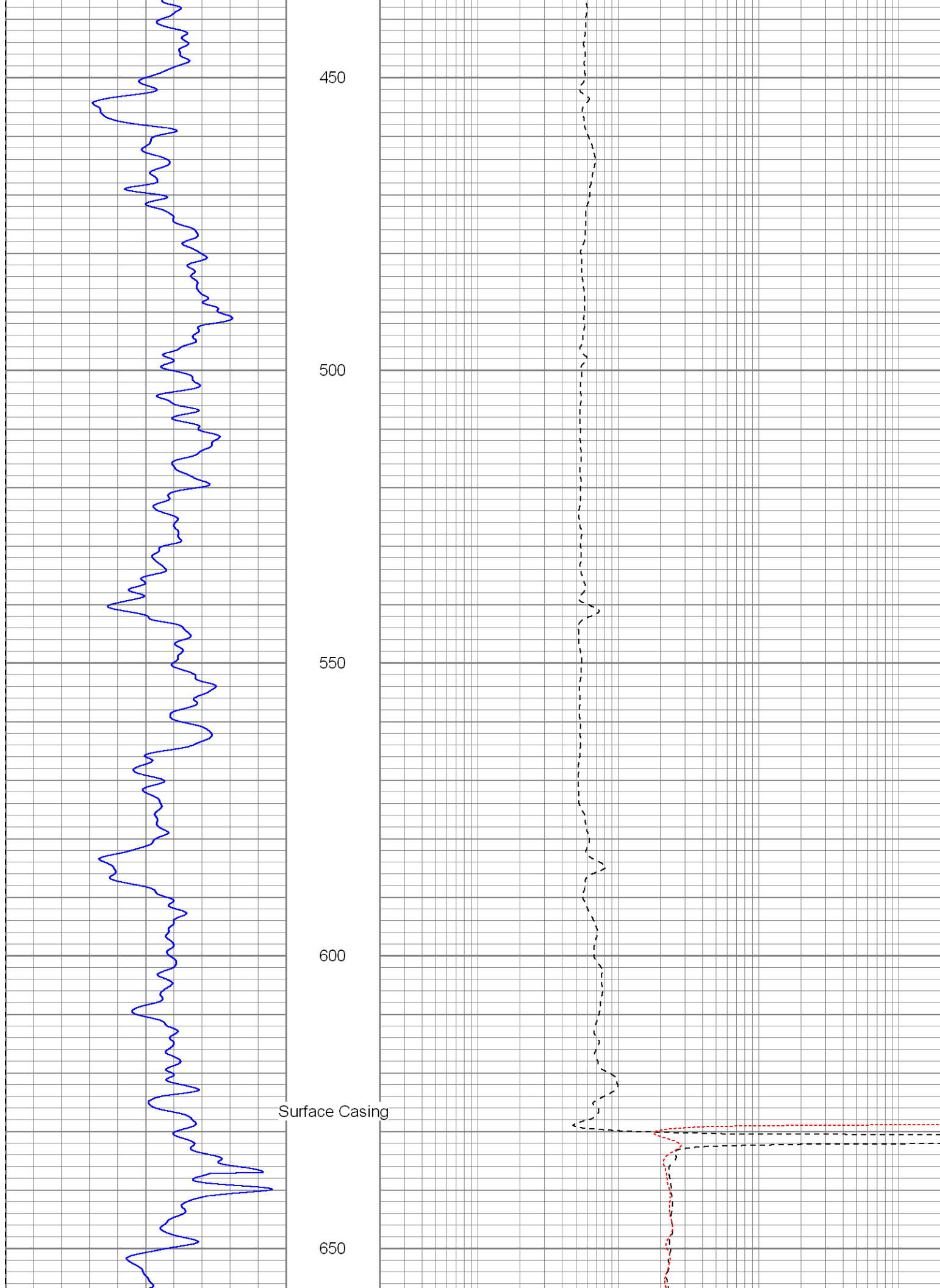
250

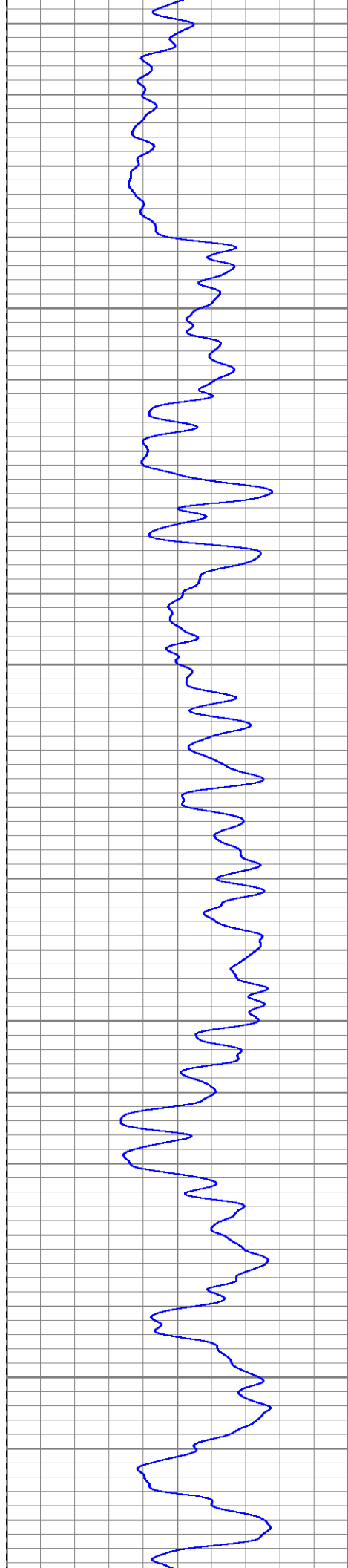
300

350

400





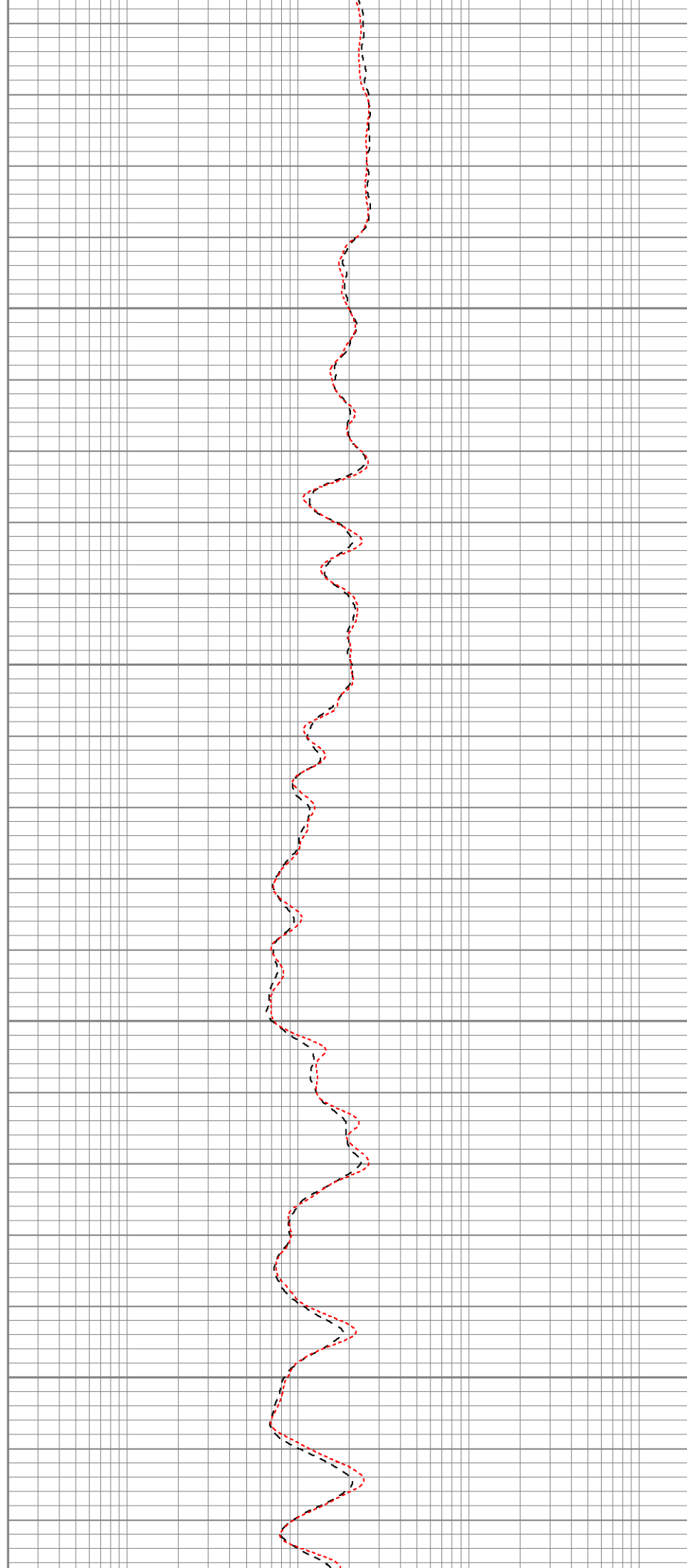


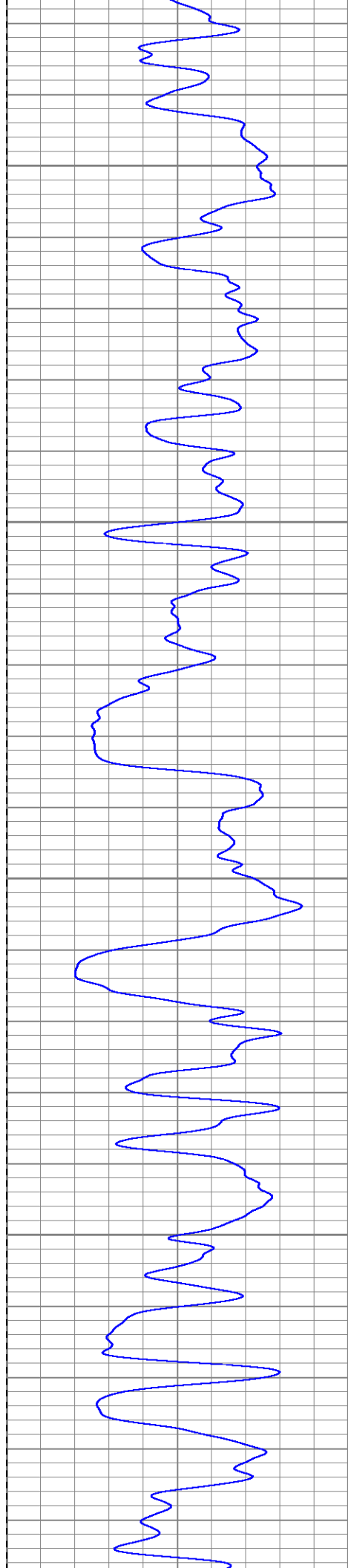
700

750

800

850



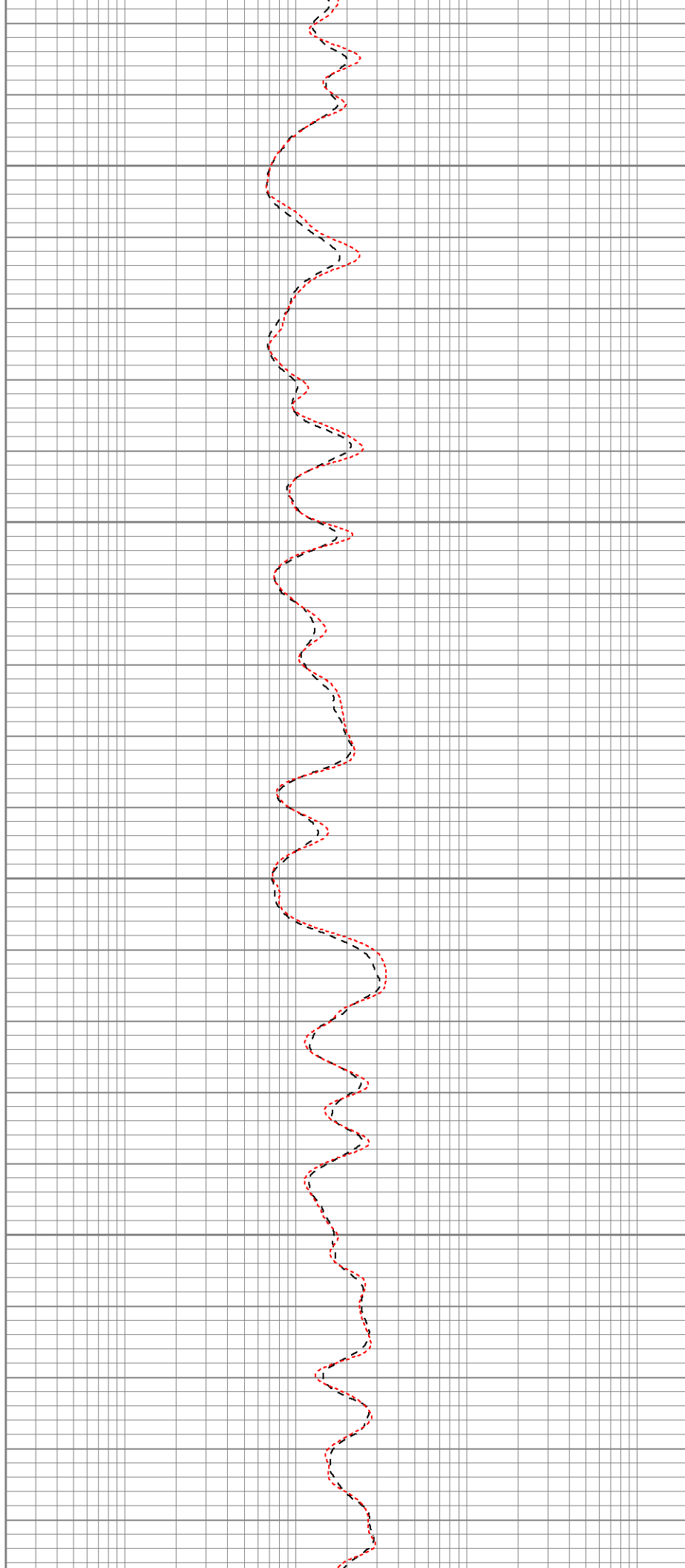


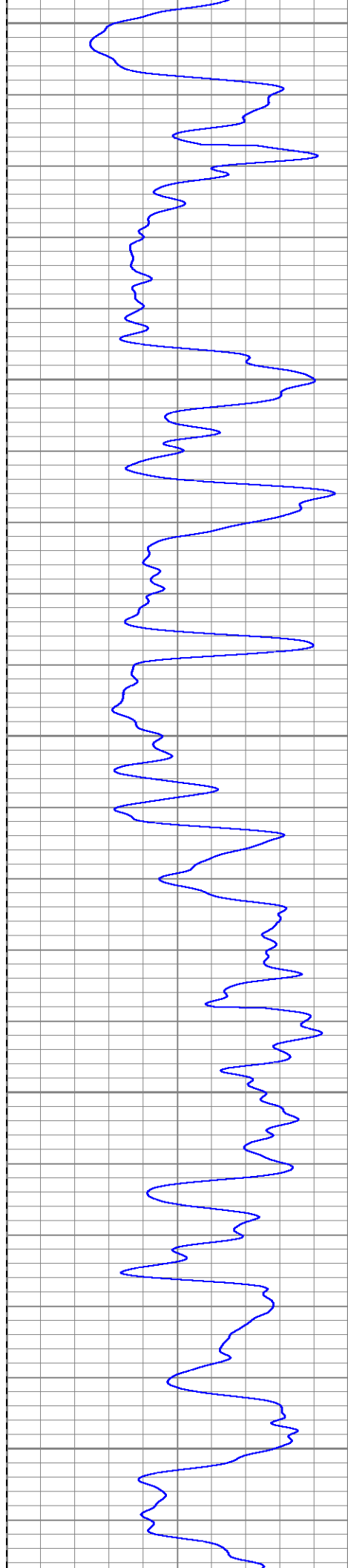
900

950

1000

1050





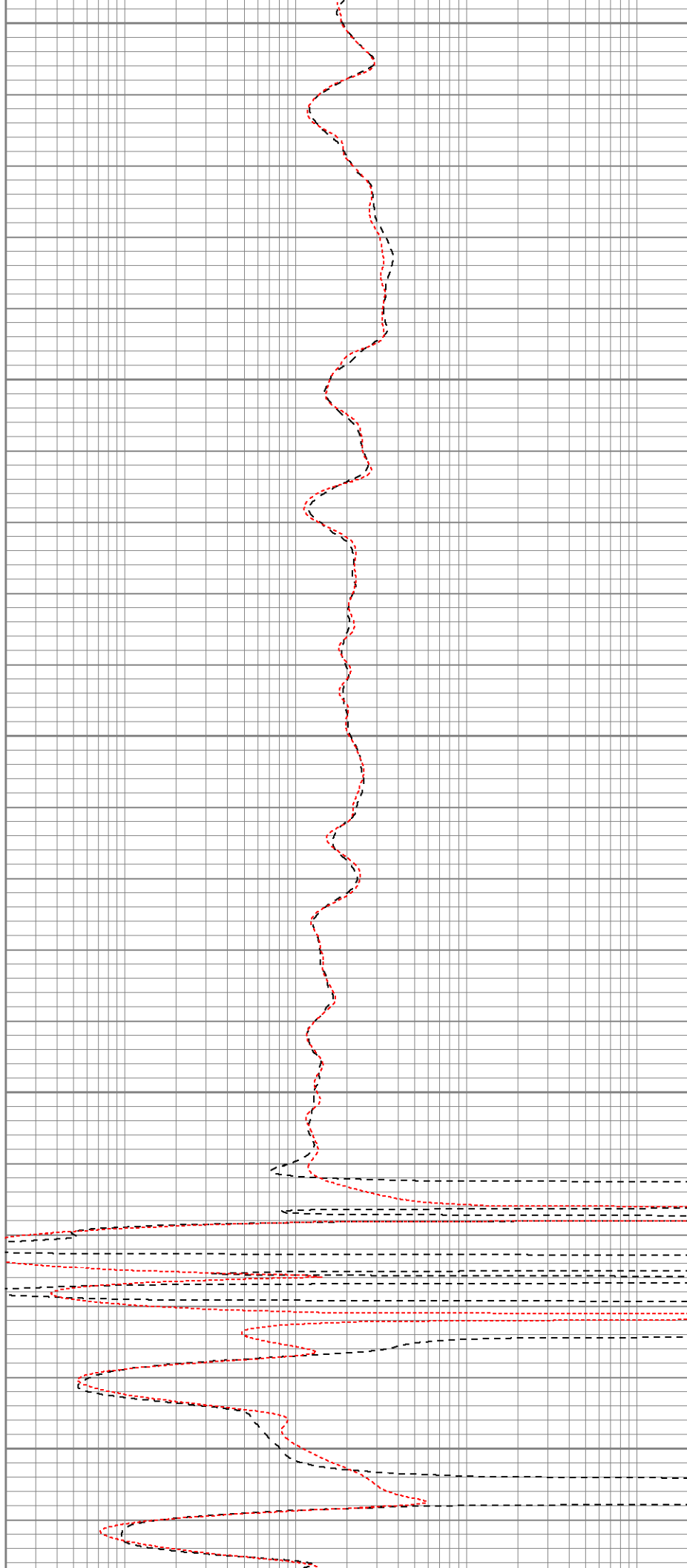
1100

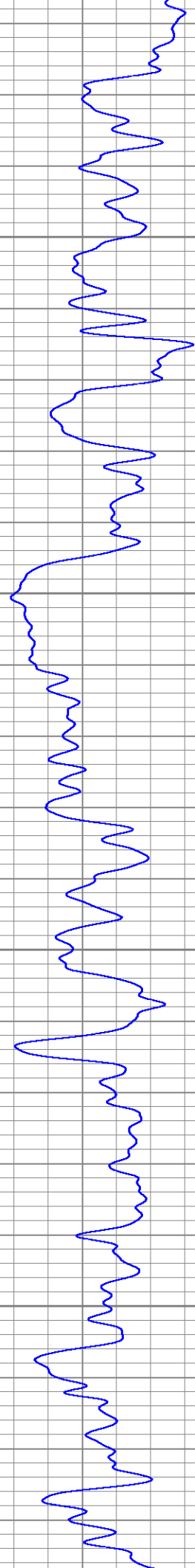
1150

1200

1250

1300



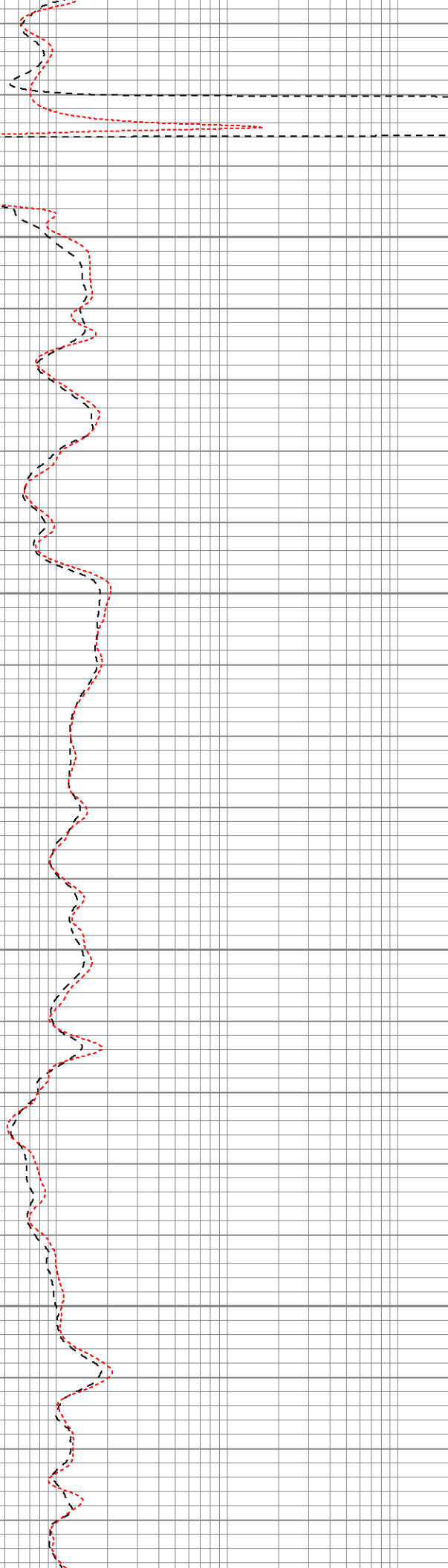


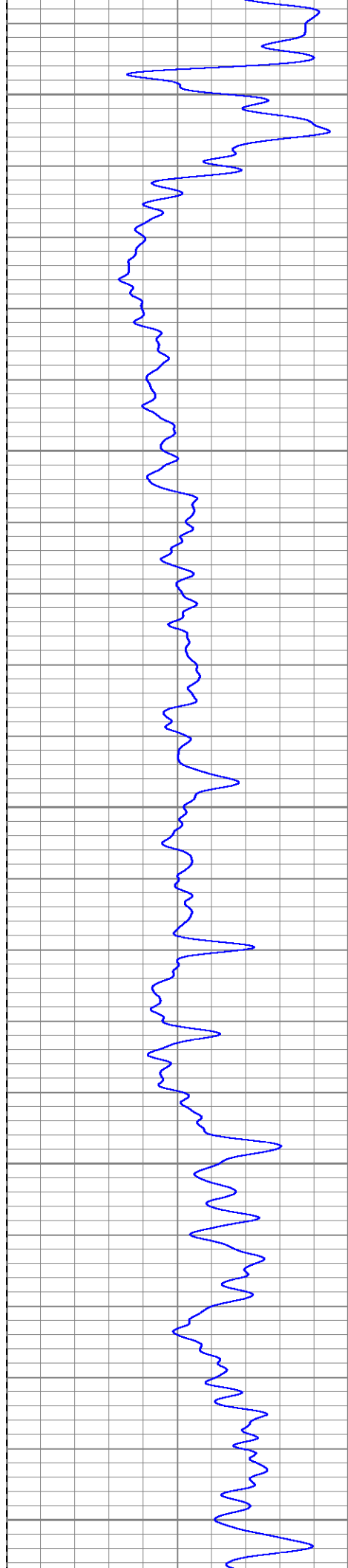
1350

1400

1450

1500





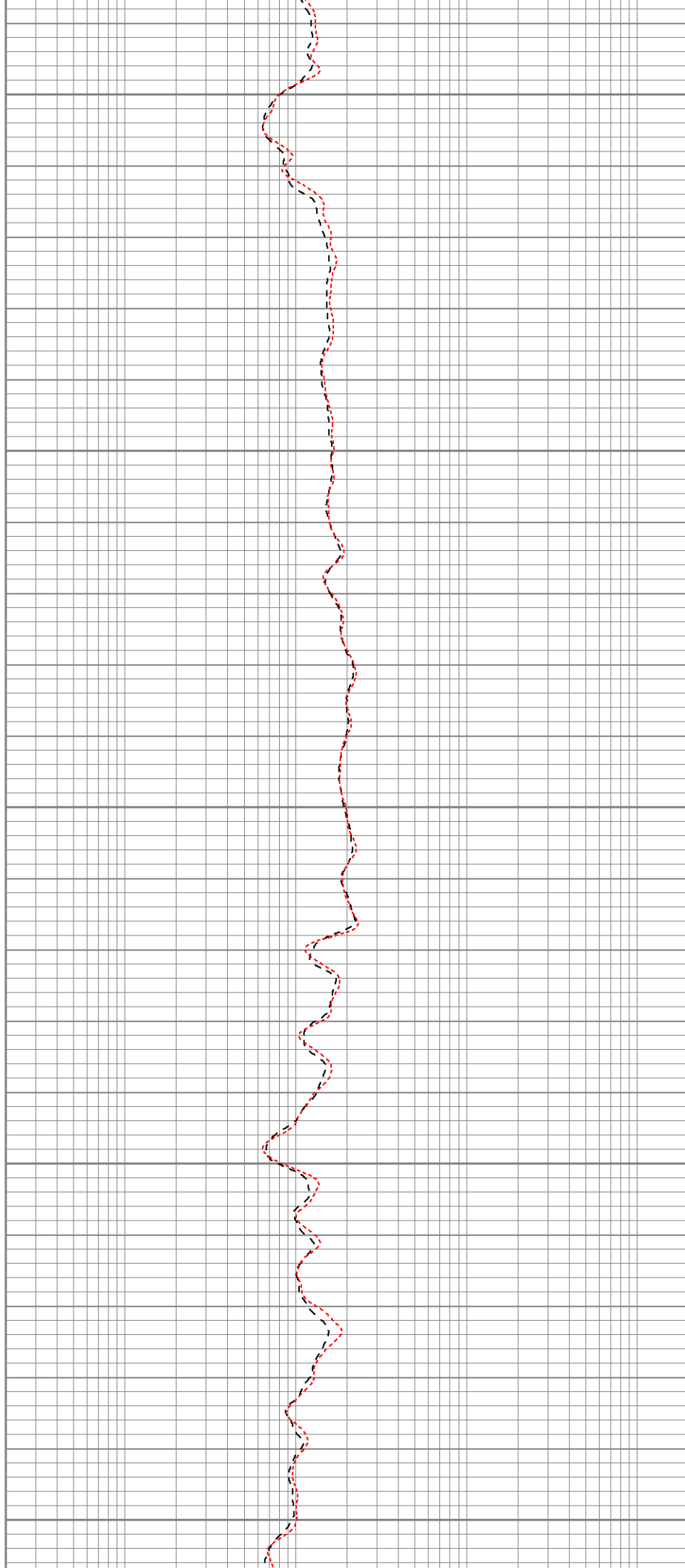
1550

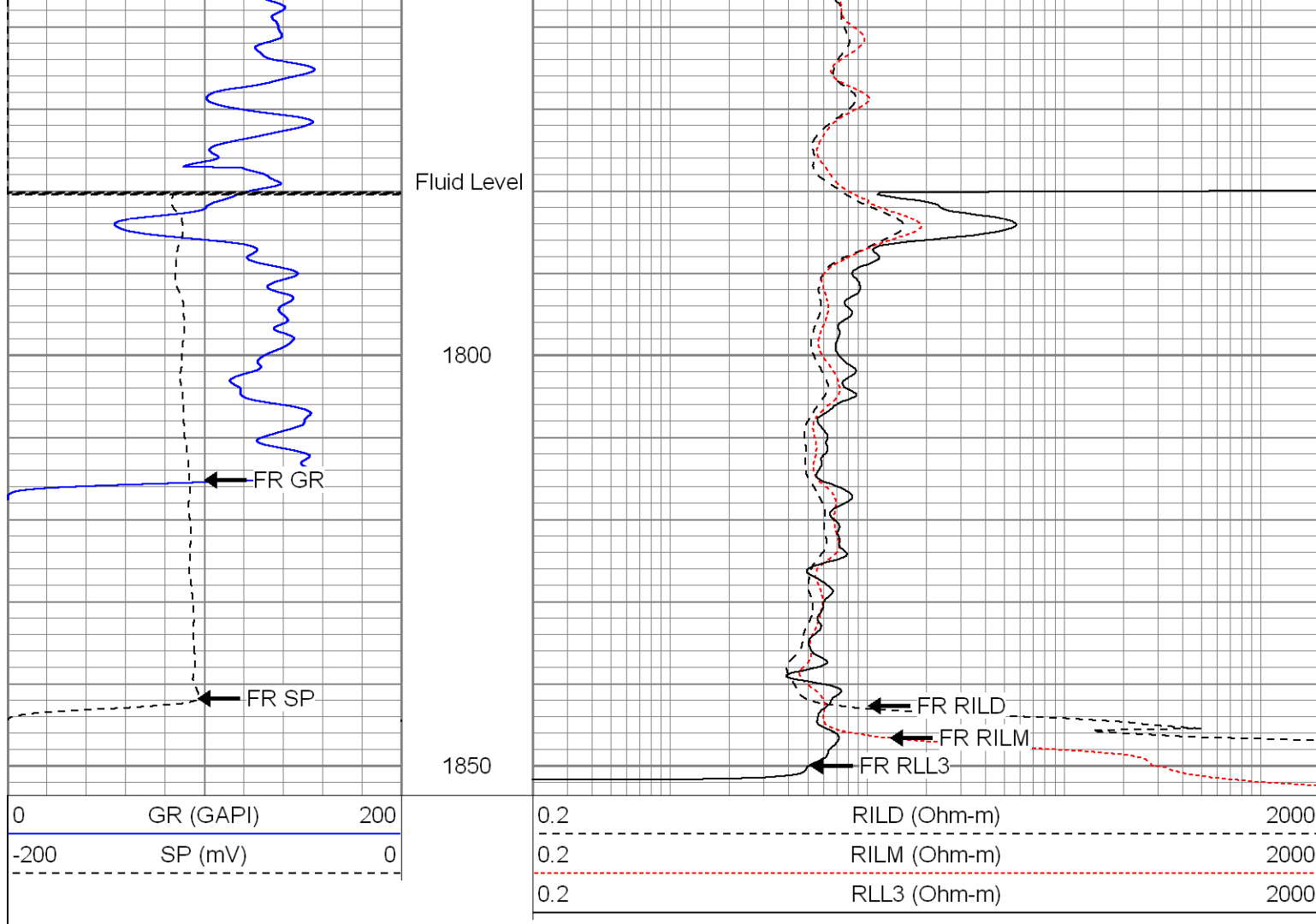
1600

1650

1700

1750





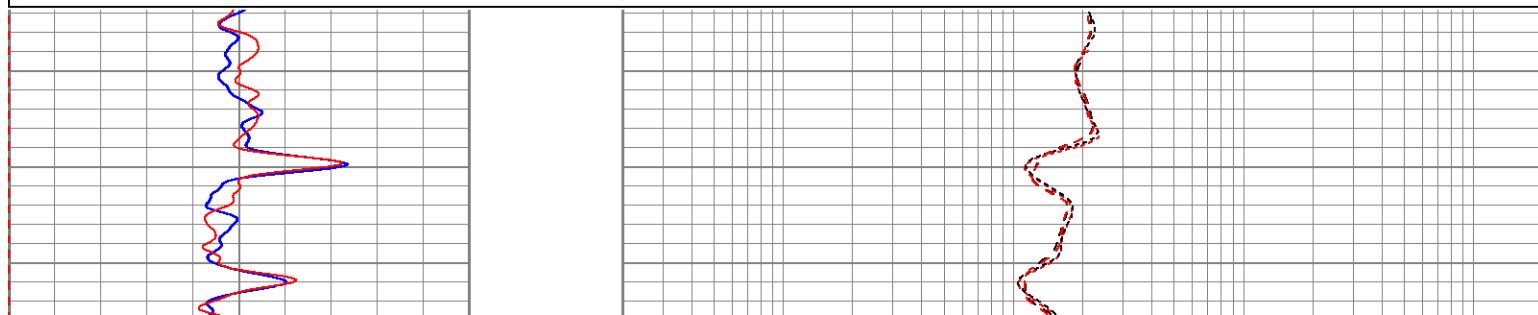
SUPERIOR

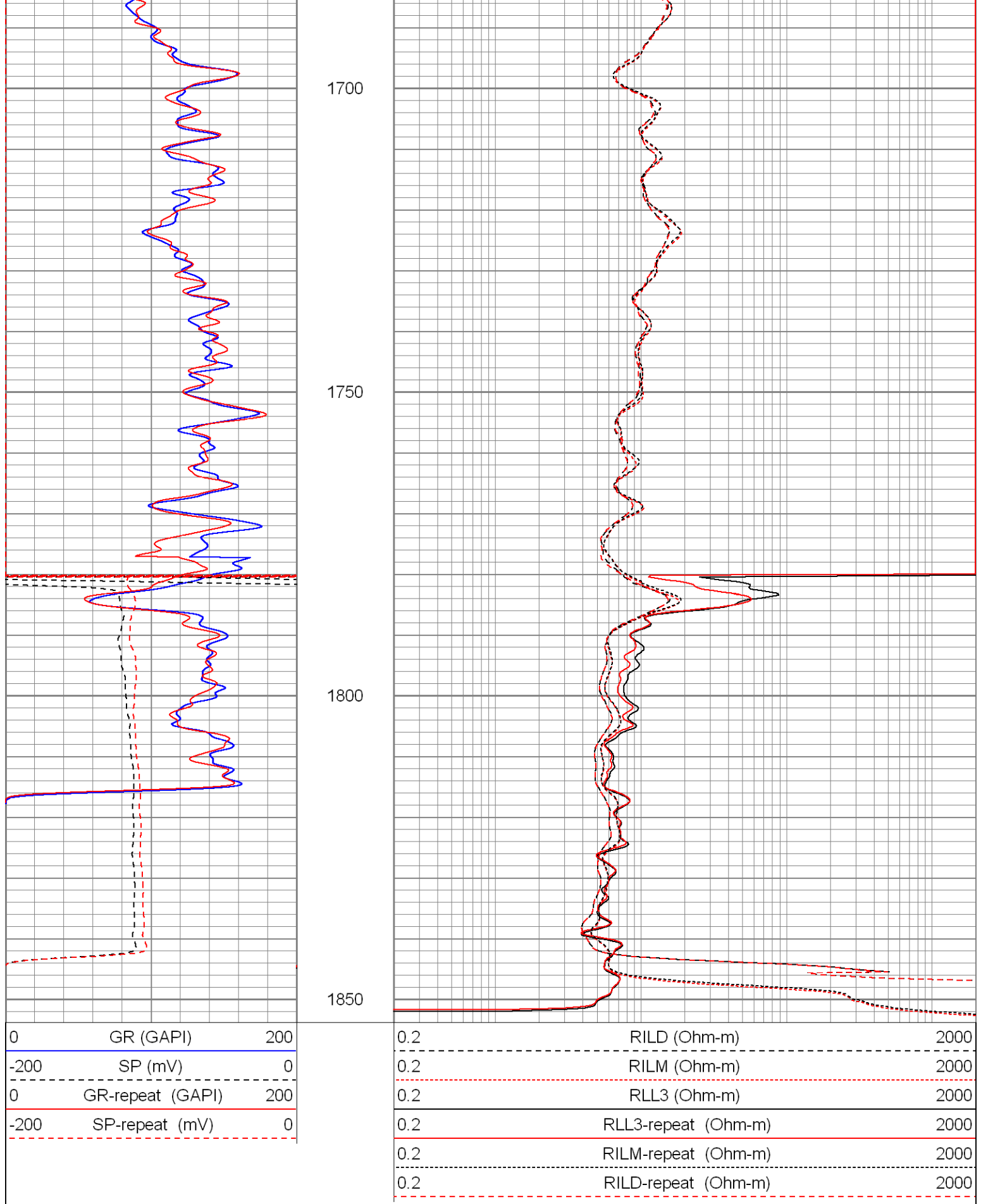
Black Lick, Pa.
Mercer, Pa.
Wooster, Oh.
Cleveland, Ok.
Trinidad, Co.

Repeat Pass

Database File: xtone25102.db
Dataset Pathname: pass3.1
Presentation Format: dil
Dataset Creation: Mon Jun 23 08:15:38 2008 by Calc Open-Cased 070814
Charted by: Depth in Feet scaled 1:240

0	GR (GAPI)	200	0.2	RILD (Ohm-m)	2000
-200	SP (mV)	0	0.2	RILM (Ohm-m)	2000
0	GR-repeat (GAPI)	200	0.2	RLL3 (Ohm-m)	2000
-200	SP-repeat (mV)	0	0.2	RLL3-repeat (Ohm-m)	2000
			0.2	RILM-repeat (Ohm-m)	2000
			0.2	RILD-repeat (Ohm-m)	2000





Calibration Report

Database File: xtone25102.db
Dataset Pathname: pass1
Dataset Creation: Sun Jun 22 17:44:10 2008 by Log Open-Cased 070814

Dual Induction Calibration Report

Serial-Model:	5375-G
Surface Cal Performed:	Thu Jun 19 14:00:16 2008
Downhole Cal Performed:	Thu Jun 19 14:11:38 2008

Surface Calibration

Readings				References			Results	
Loop:	Air	Loop		Air	Loop		m	b
Deep	0.008	0.627	V	0.000	500.000	mmho-m	807.269	-6.223
Medium	0.010	0.749	V	0.000	550.000	mmho-m	744.131	-7.221
Internal:	Zero	Cal		Zero	Cal		m	b
Deep	0.008	0.628	V	0.000	500.000	mmho-m	806.482	-6.237
Medium	0.010	0.749	V	0.000	550.000	mmho-m	744.204	-7.127

Downhole Calibration

Readings				References			Results	
Internal:	Zero	Cal		Zero	Cal		m	b
Deep	0.256	500.305	mmho-m	0.020	500.507	mmho-m	1.001	-0.237
Medium	0.259	549.900	mmho-m	-0.095	549.850	mmho-m	1.001	-0.354
Shallow	2.515	0.018	V	500.000	2.000	Ohm-m	199.433	-1.530

Compensated Density Calibration Report

Serial-Model:	901-2.75POH
Source / Verifier:	/
Master Calibration Performed:	Fri Jun 13 13:34:55 2008

Master Calibration

	Density		Far Detector	Near Detector	
Magnesium	1.710	g/cc	1044.92	534.39	cps
Aluminum	2.590	g/cc	190.27	268.70	cps
Spine Angle = 68.02			Density/Spine Ratio = 0.479		
	Size		Reading		
Small Ring	8.00	in	2.48	V	
Large Ring	17.00	in	4.28	V	

Neutron Calibration Report

Serial Number:	803
Tool Model:	2.75POH
Performed:	Fri Jun 13 12:44:22 2008

Calibrator Value:	1	NAPI
-------------------	---	------


Calibrator Reading:	1	cps
---------------------	---	-----

Sensitivity:	1	NAPI/cps
--------------	---	----------

Gamma Ray Calibration Report	
------------------------------	--

Serial Number:	801
----------------	-----

Tool Model:	2.75POH	
Performed:	Fri Jun 13 12:38:01 2008	
Calibrator Value:	1.0	GAPI
Background Reading:	0.0	cps
Calibrator Reading:	1.0	cps
Sensitivity:	0.8000	GAPI/cps

Sensor	Offset (ft)	Schematic	Description	Len (ft)	OD (in)	Wt (lb)
GR	37.81		None	0.75	1.50	5.00
			GR-2.75POH (801) Probe	3.73	2.75	43.00
NEU	32.27		NEU-2.75POH (803) Probe Epithermal	4.75	2.75	58.00
LSD DCAL SSD	24.44		CDL-2.75POH (901) Probe	8.43	2.75	106.00
	24.16					
	23.91					
			Probe	0.89	3.50	20.00
CILD SP	10.60		DIL-G (5375) Gearhart	20.80	4.00	345.00
	10.60					
CILM	6.89					
RLL3	1.70					

Dataset:	xtone25102.db: field/well/run1/pass1
Total Length:	39.34 ft
Total Weight:	577.00 lb
O.D.	4.00 in