



SUPERIOR
Black Lick, Pa.
Mercer, Pa.
Wooster, Oh.
Cleveland, Ok.
Trinidad, Co.

**CEMENT BOND
GAMMA RAY
1000 PSI**

Company XTO Energy Inc.
Well Hill Ranch East 23-10
Field Purgatorie River
County Las Animas
State CO

Company XTO Energy Inc.
Well Hill Ranch East 23-10
Field Purgatorie River
County Las Animas
State CO

Location: API #: 05 071 09441 00

1730' FSL & 2417' FEL

SEC 23 TWP 34S RGE 67W

Permanent Datum Ground Level Elevation 7681'
Log Measured From Ground Level
Drilling Measured From Ground Level

Elevation
K.B. -----
D.F. -----
G.L. 7681'

Date 4/18/08

Run Number two
Depth Driller 2350'
Depth Logger 2269'
Bottom Logged Interval 2265'
Top Log Interval Surf.
Open Hole Size 7 7/8"
Type Fluid water
Density / Viscosity
Max. Recorded Temp. 137F
Estimated Cement Top Surf.
Time Well Ready ROA
Time Logger on Bottom 10:50
Equipment Number 0703
Location Trinidad
Recorded By Worley
Witnessed By Mr. Rensink

Run Number Bit From To Size Weight From To

Casing Record Size Wgt/Ft Top Bottom
Surface String 8 5/8" 00 491'
Prot. String
Production String 5 1/2" 00 NA
Liner

<<< Fold Here >>>

All interpretations are opinions based on inferences from electrical or other measurements and we cannot and do not guarantee the accuracy or correctness of any interpretation, and we shall not, except in the case of gross or willful negligence on our part, be liable or responsible for any loss, costs, damages, or expenses incurred or sustained by anyone resulting from any interpretation made by any of our officers, agents or employees. These interpretations are also subject to our general terms and conditions set out in our current Price Schedule.

Comments

Lorencito, 2.2 miles past Compressor station take right,
at next Y stay right up hill, at top of hill take hard left,
take third left, at next Y stay right to location.

CBL ran under 1000 PSI.



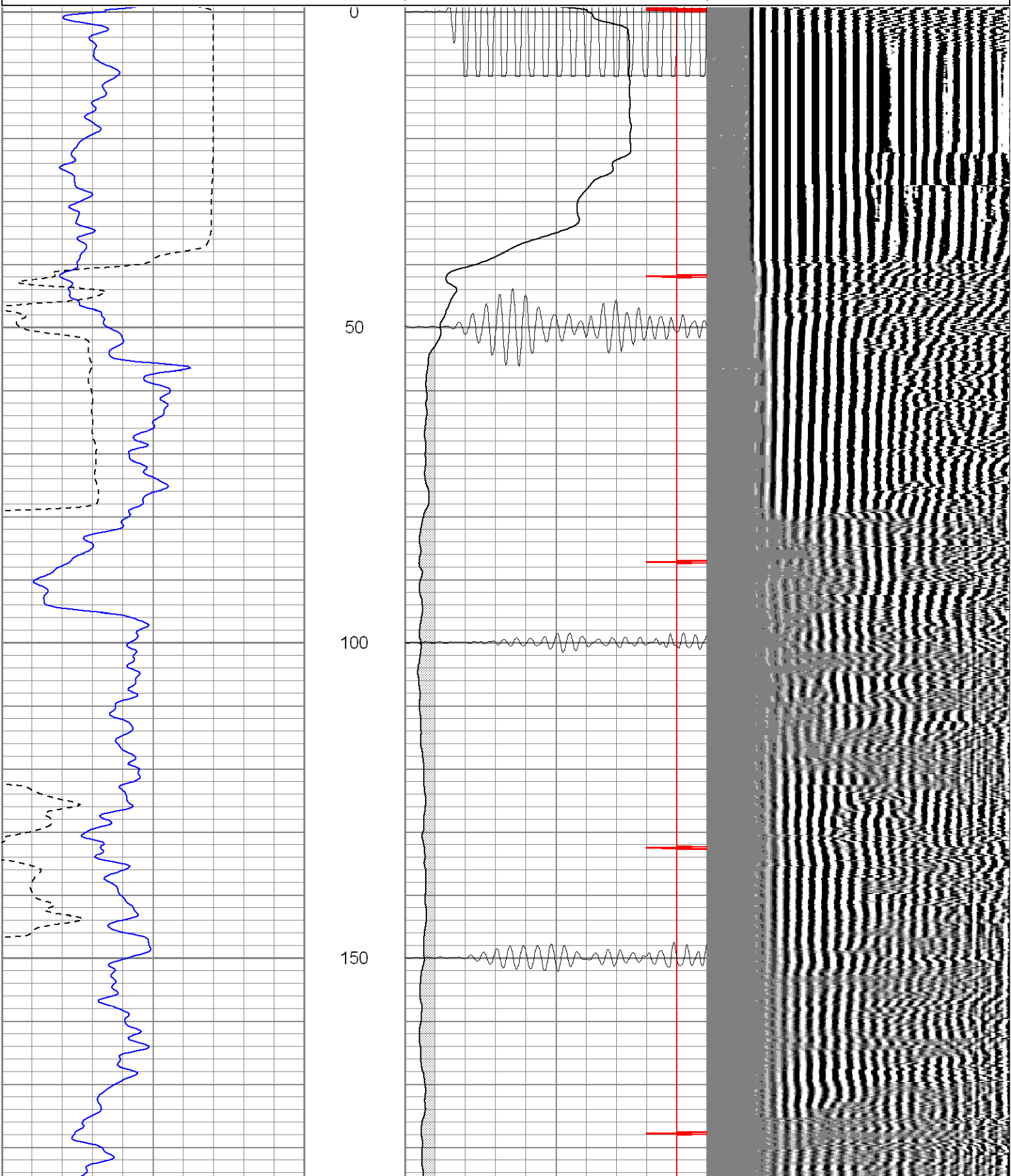
SUPERIOR

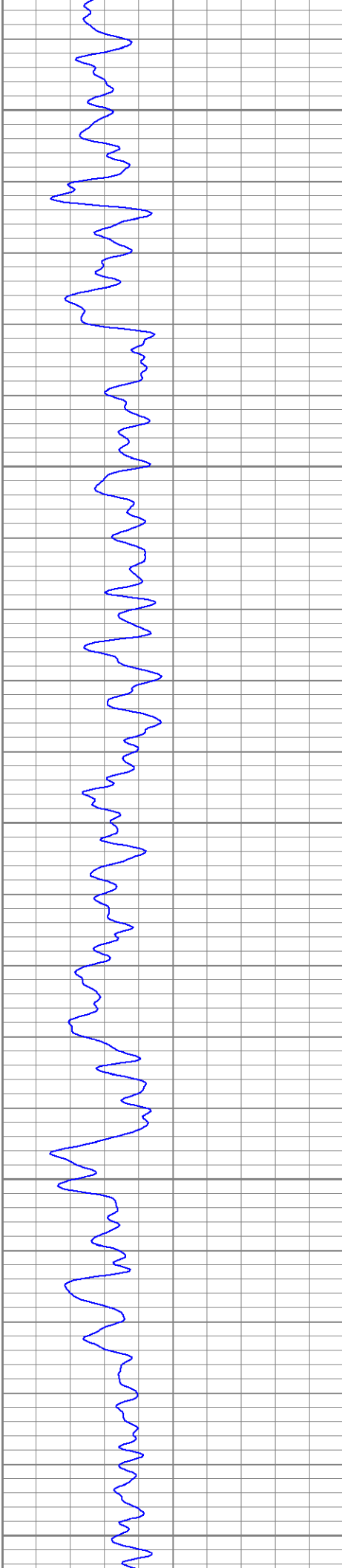
Black Lick, Pa.
Mercer, Pa.
Wooster, Oh.
Cleveland, Ok.
Trinidad, Co.

Main Pass 1000 PSI

Database File: hre23-10b41808.db
Dataset Pathname: pass2
Presentation Format: cblrt
Dataset Creation: Fri Apr 18 10:57:47 2008 by Log Open-Cased 071220
Charted by: Depth in Feet scaled 1:240

0	GR (GAPI)	200	0	AMP3 (mV)	100	200	CBL5	1200
400	TT3 (usec)	200	18	CCL	-2			
			200	CBL5	1200			





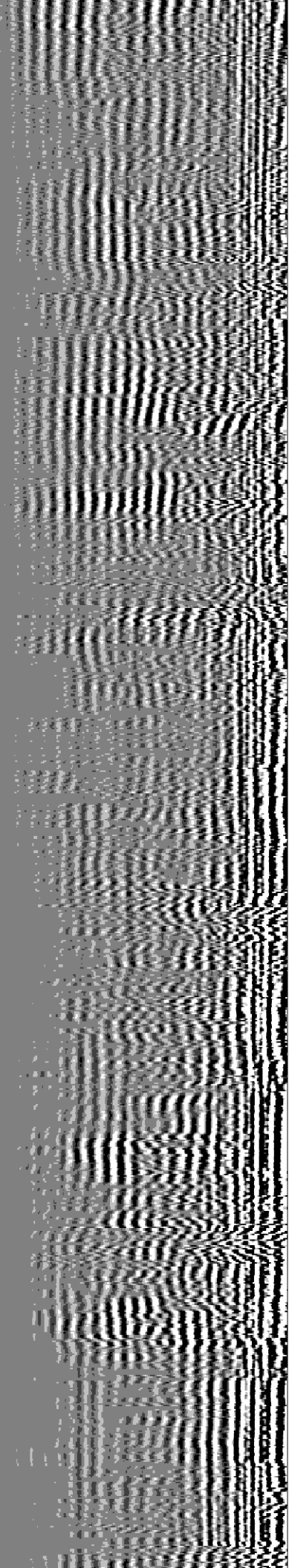
200

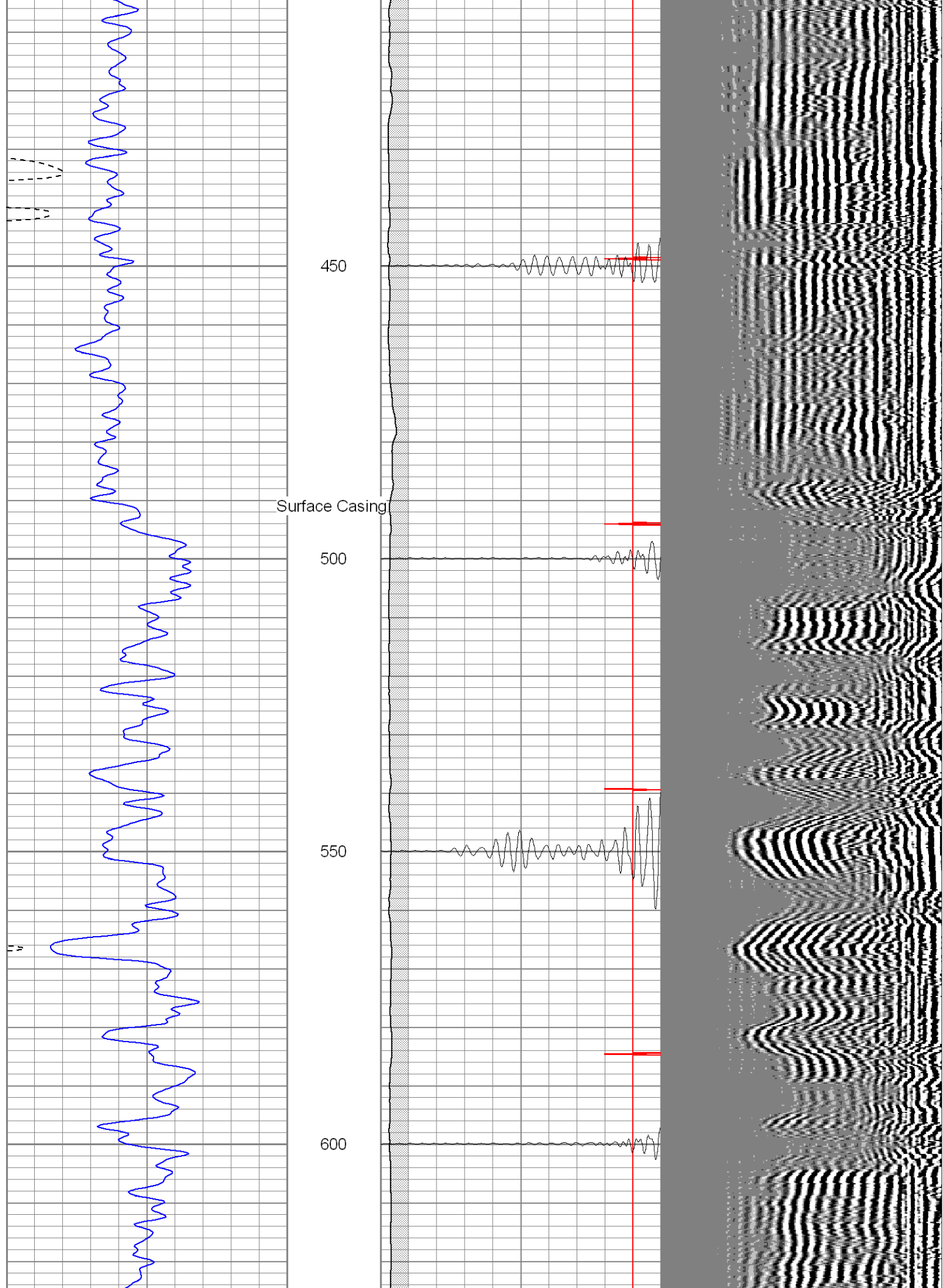
250

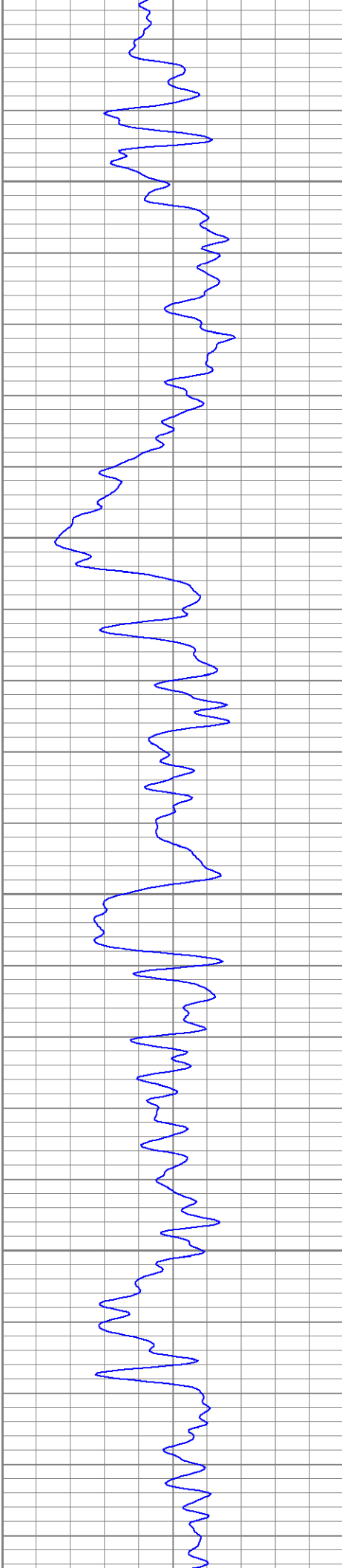
300

350

400





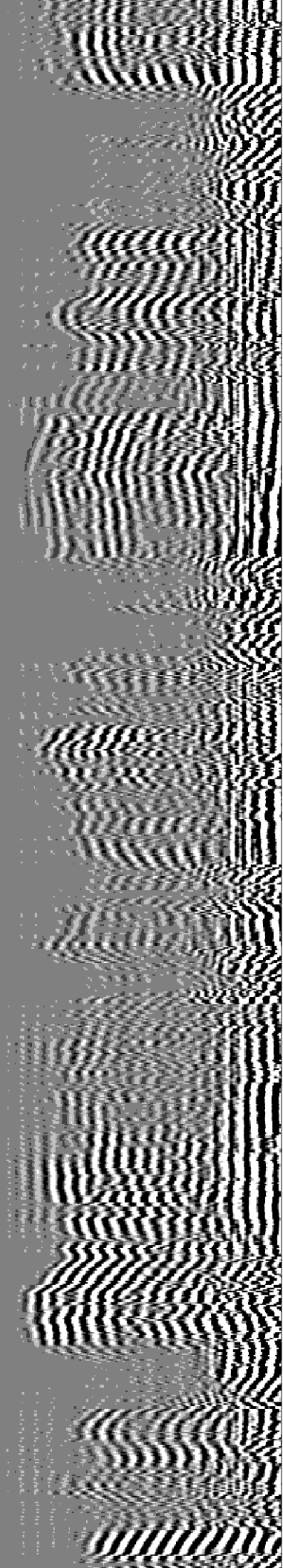
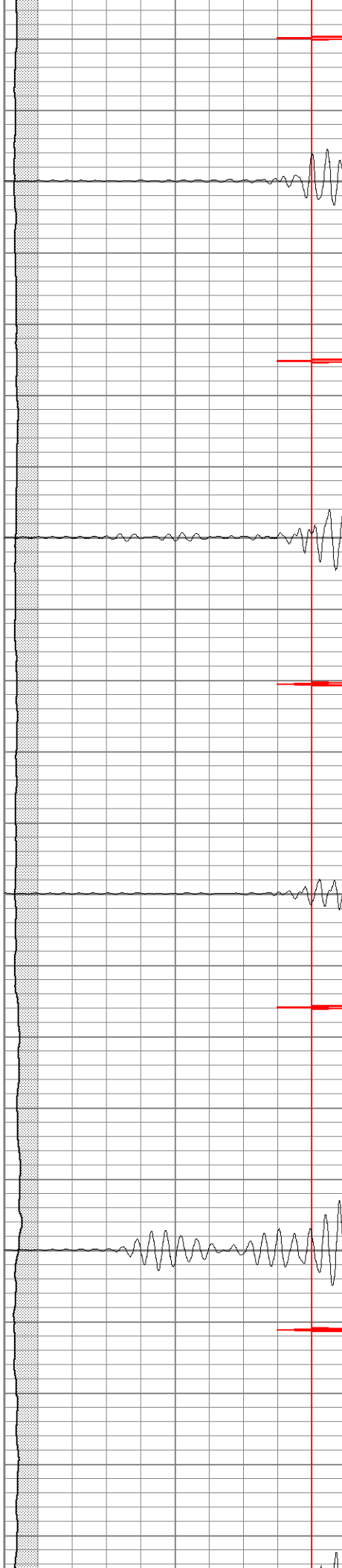


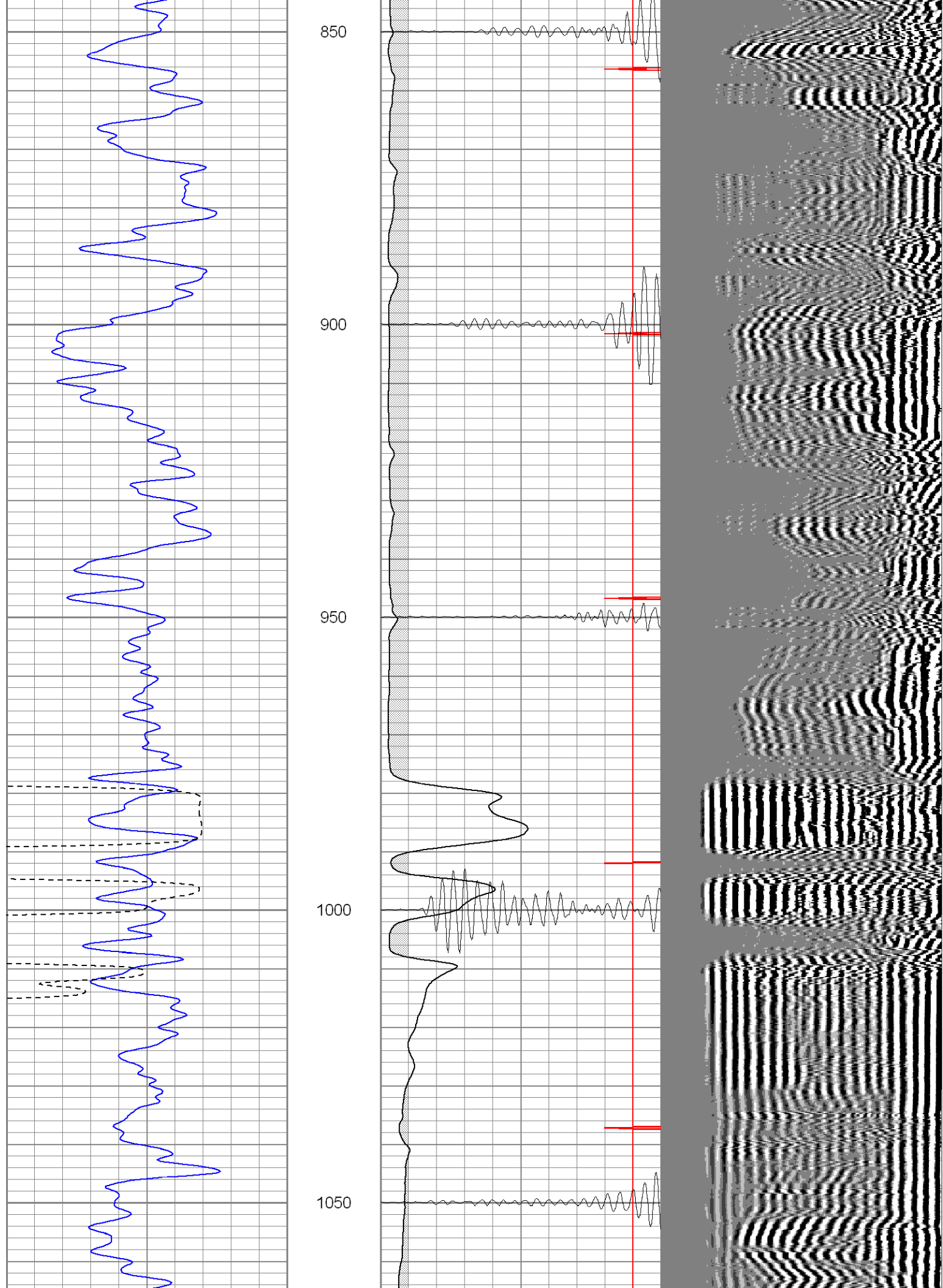
650

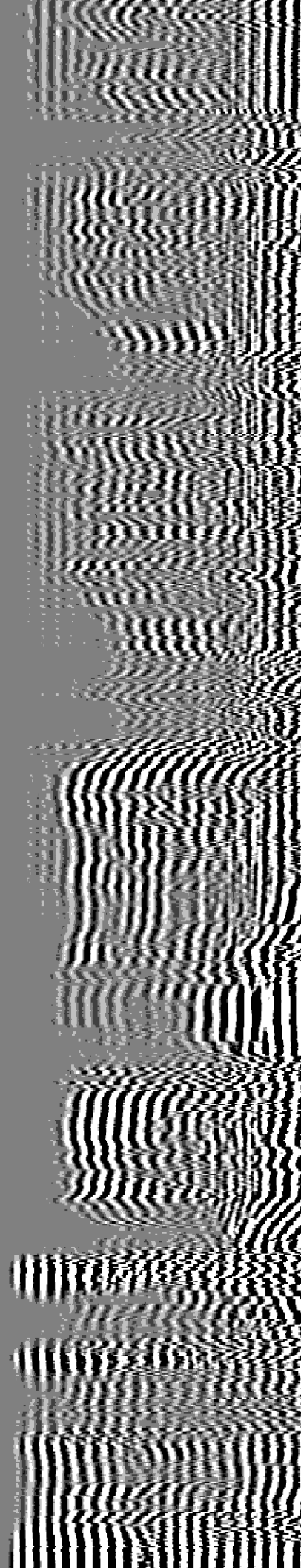
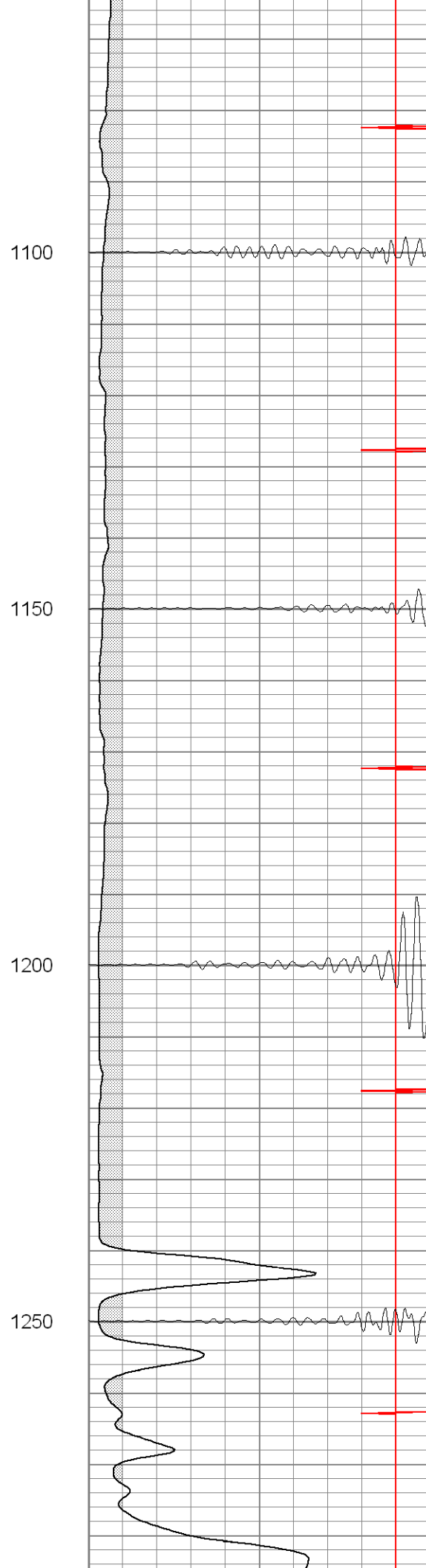
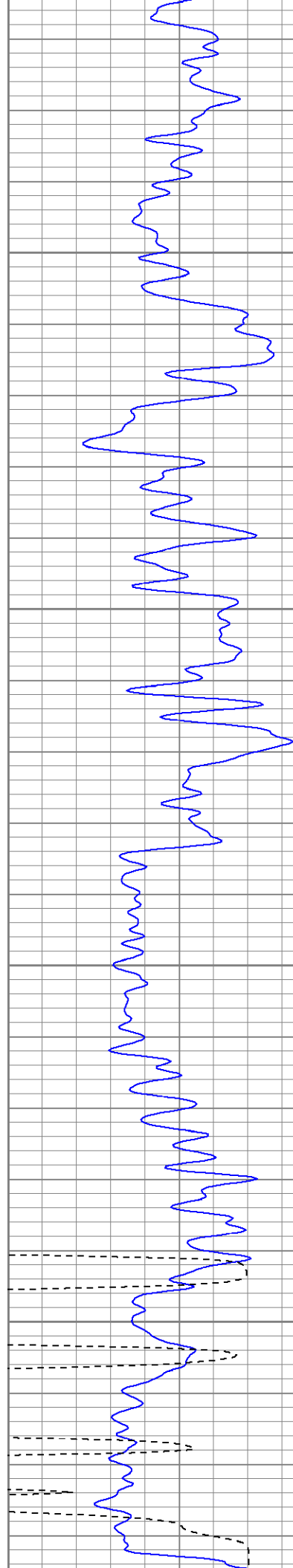
700

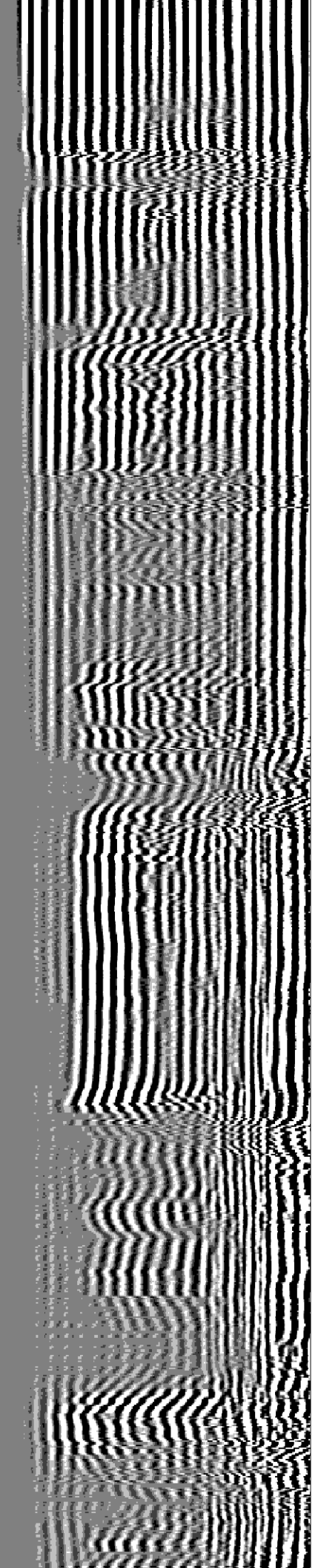
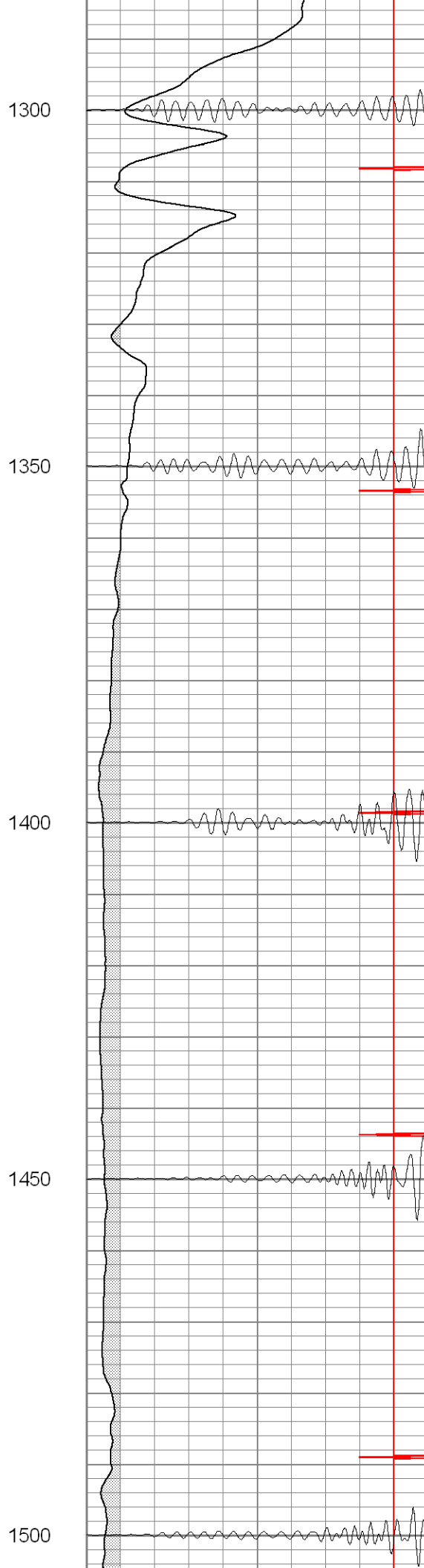
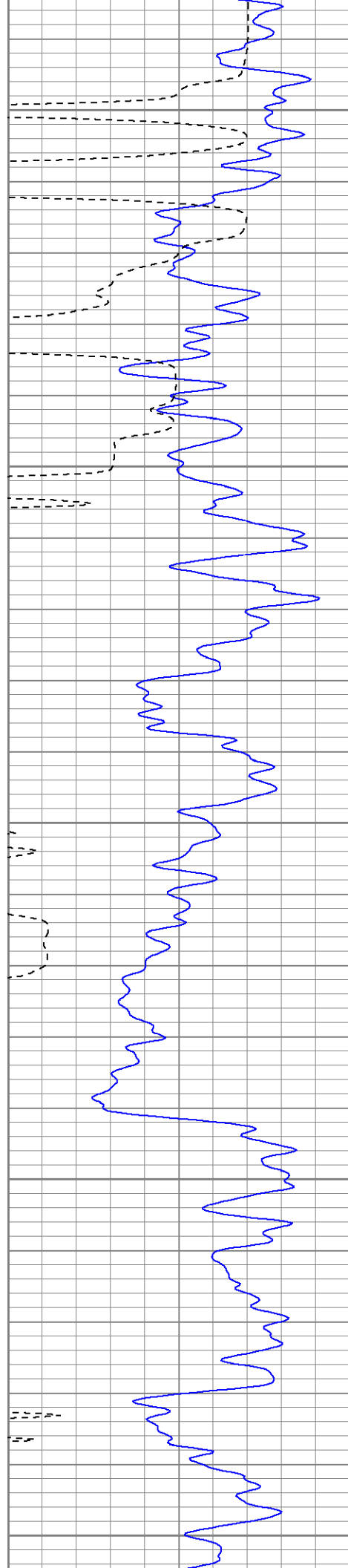
750

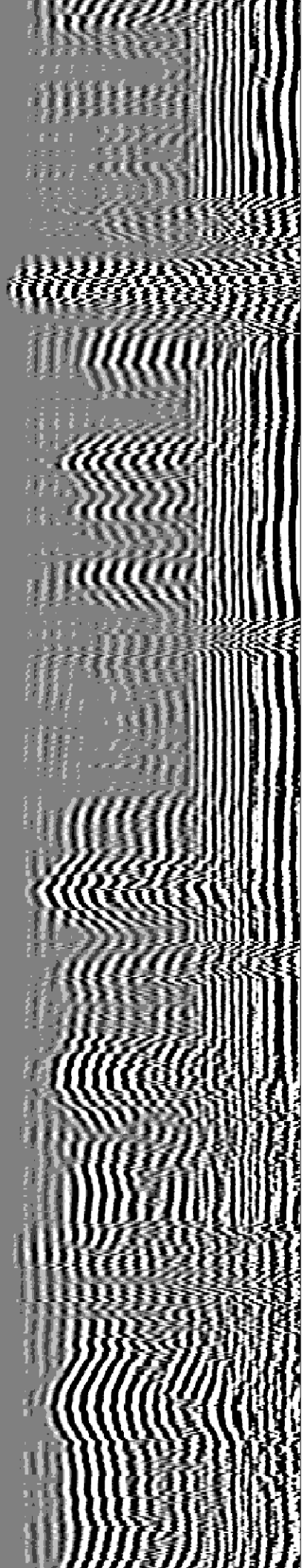
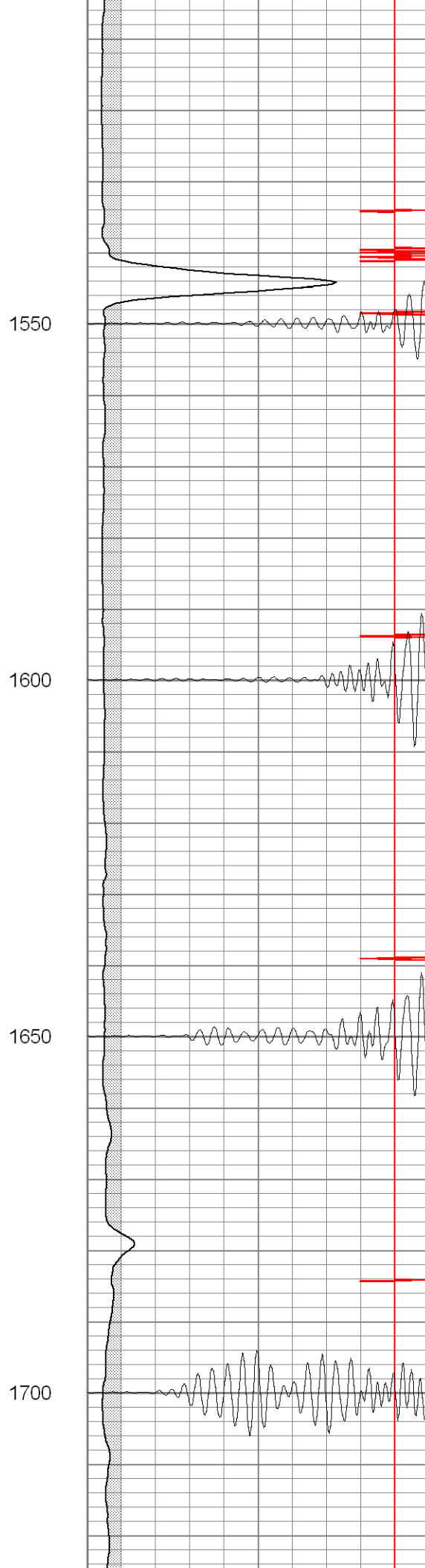
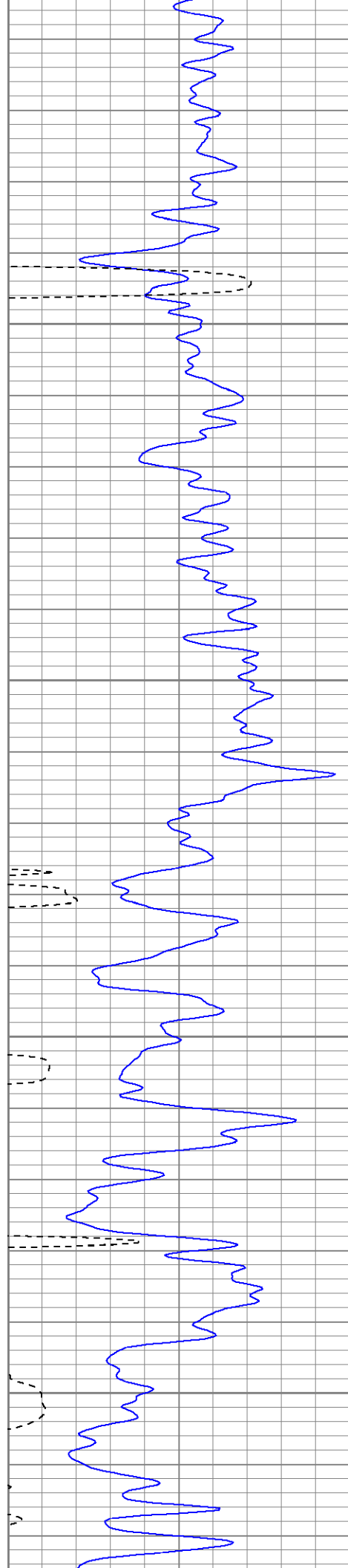
800

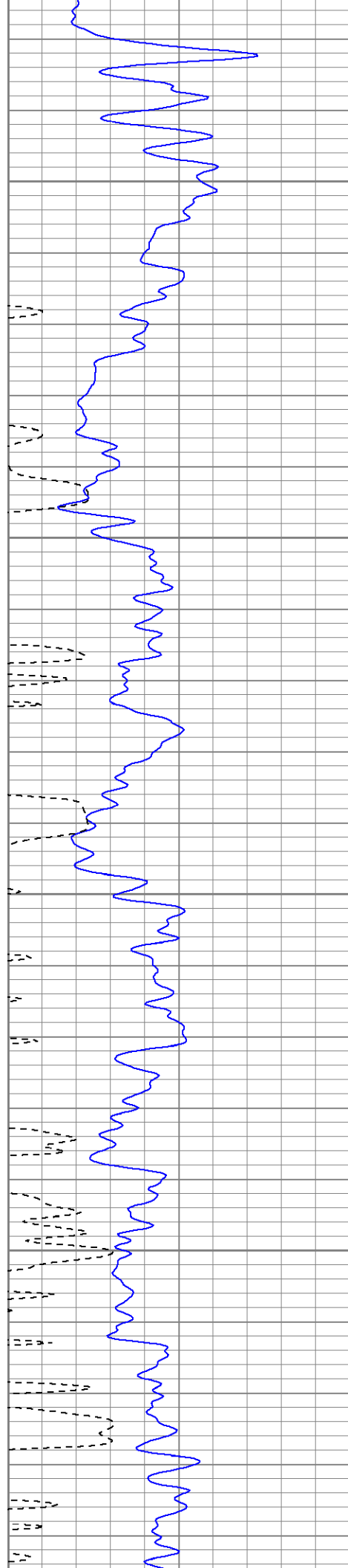










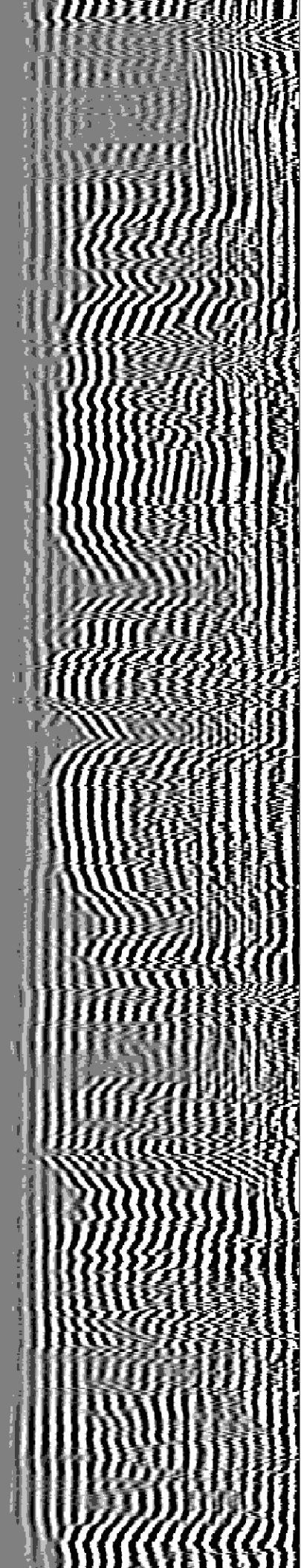
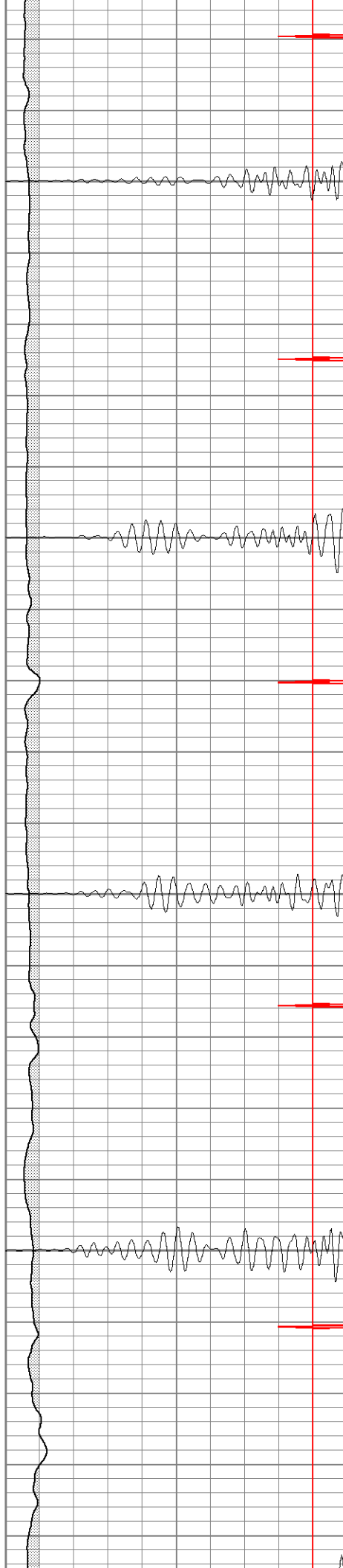


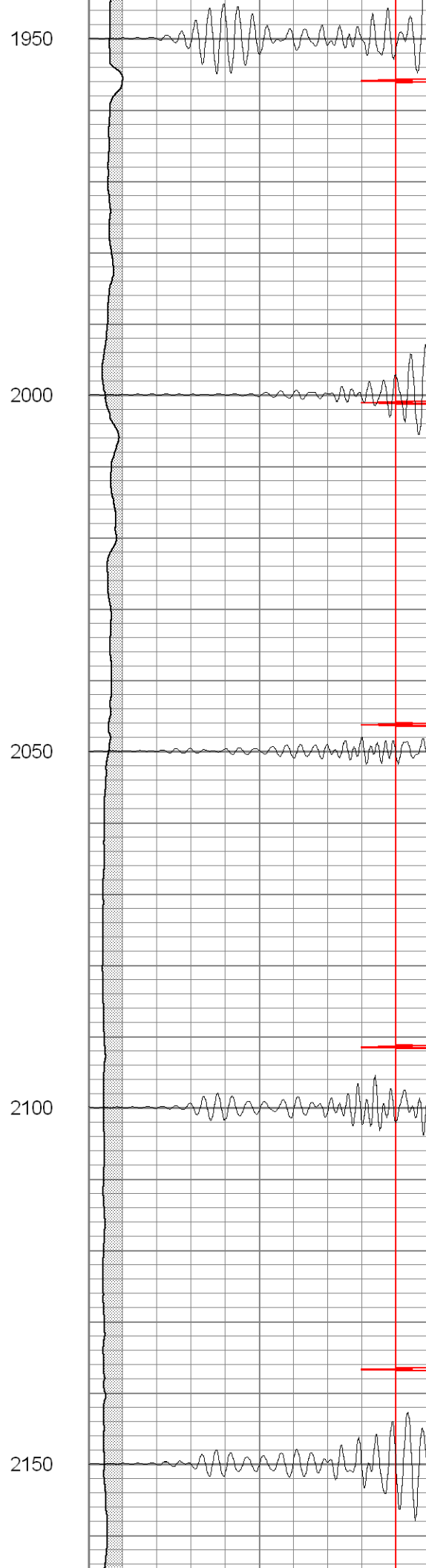
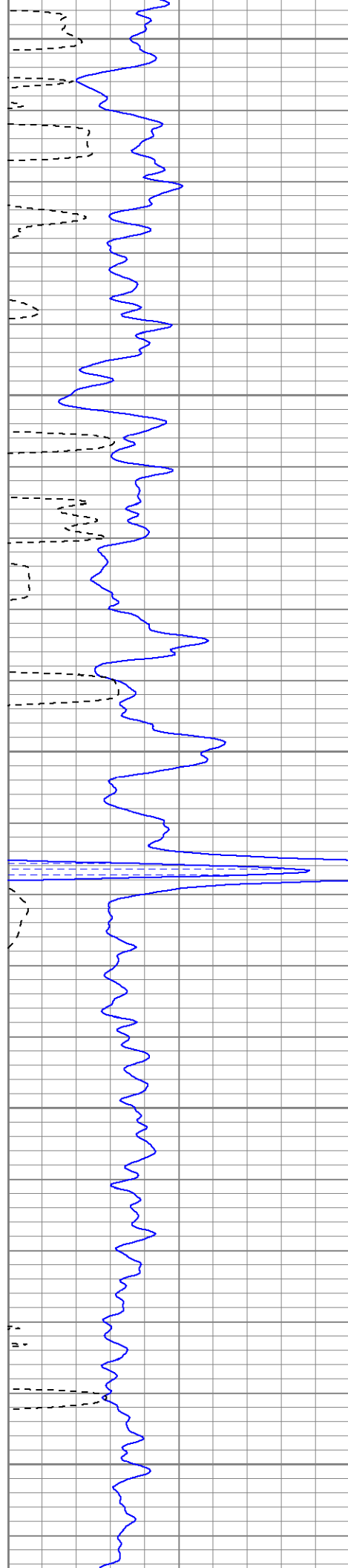
1750

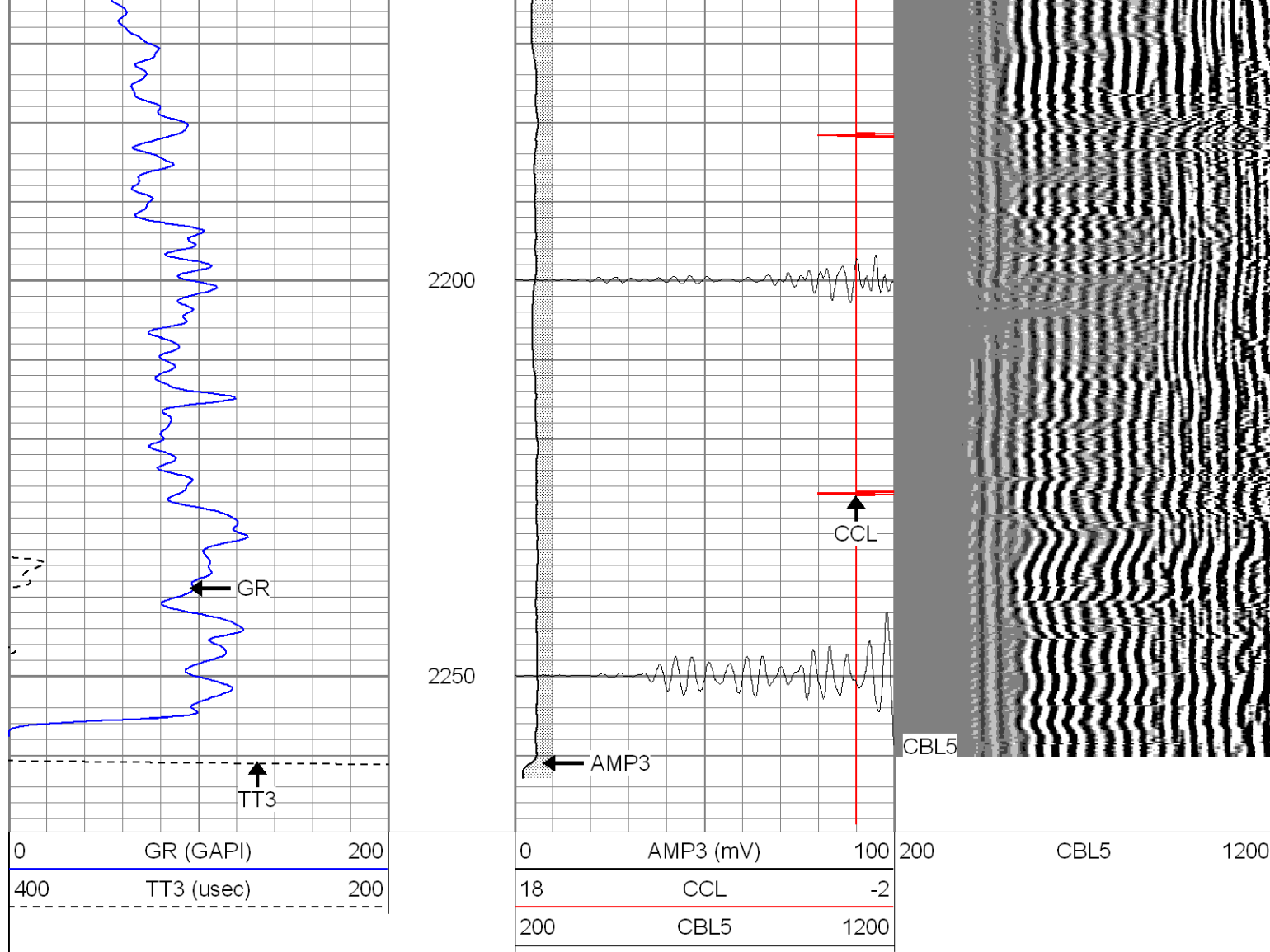
1800

1850

1900





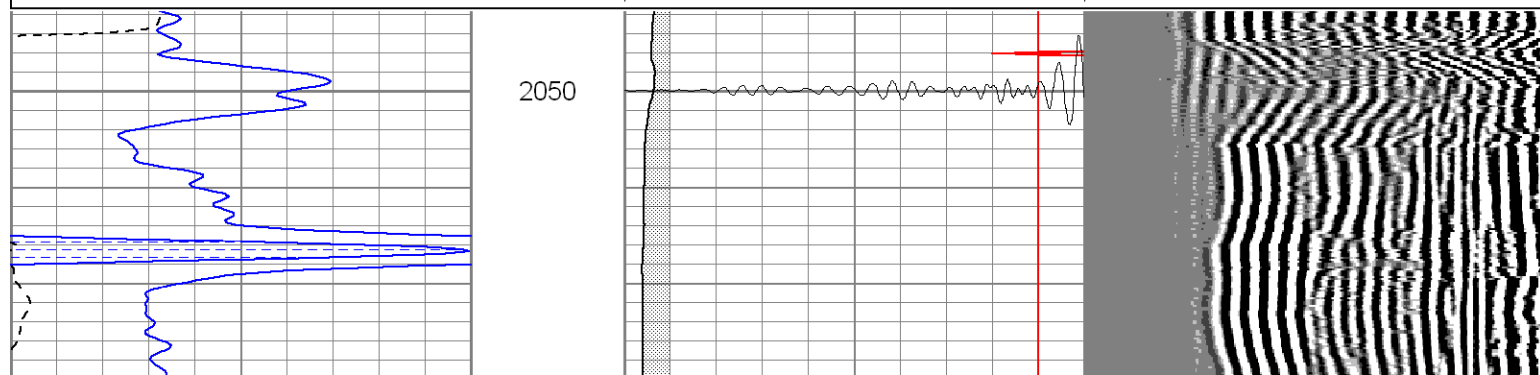
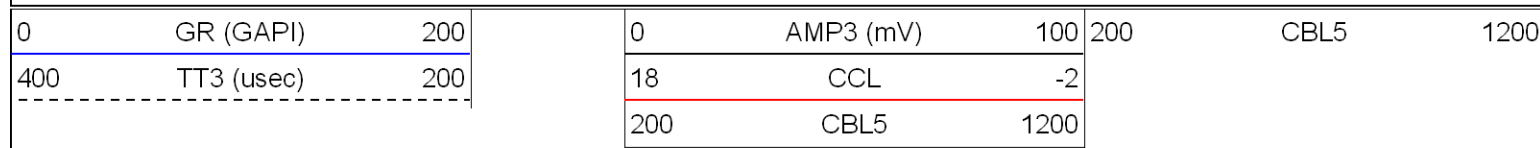


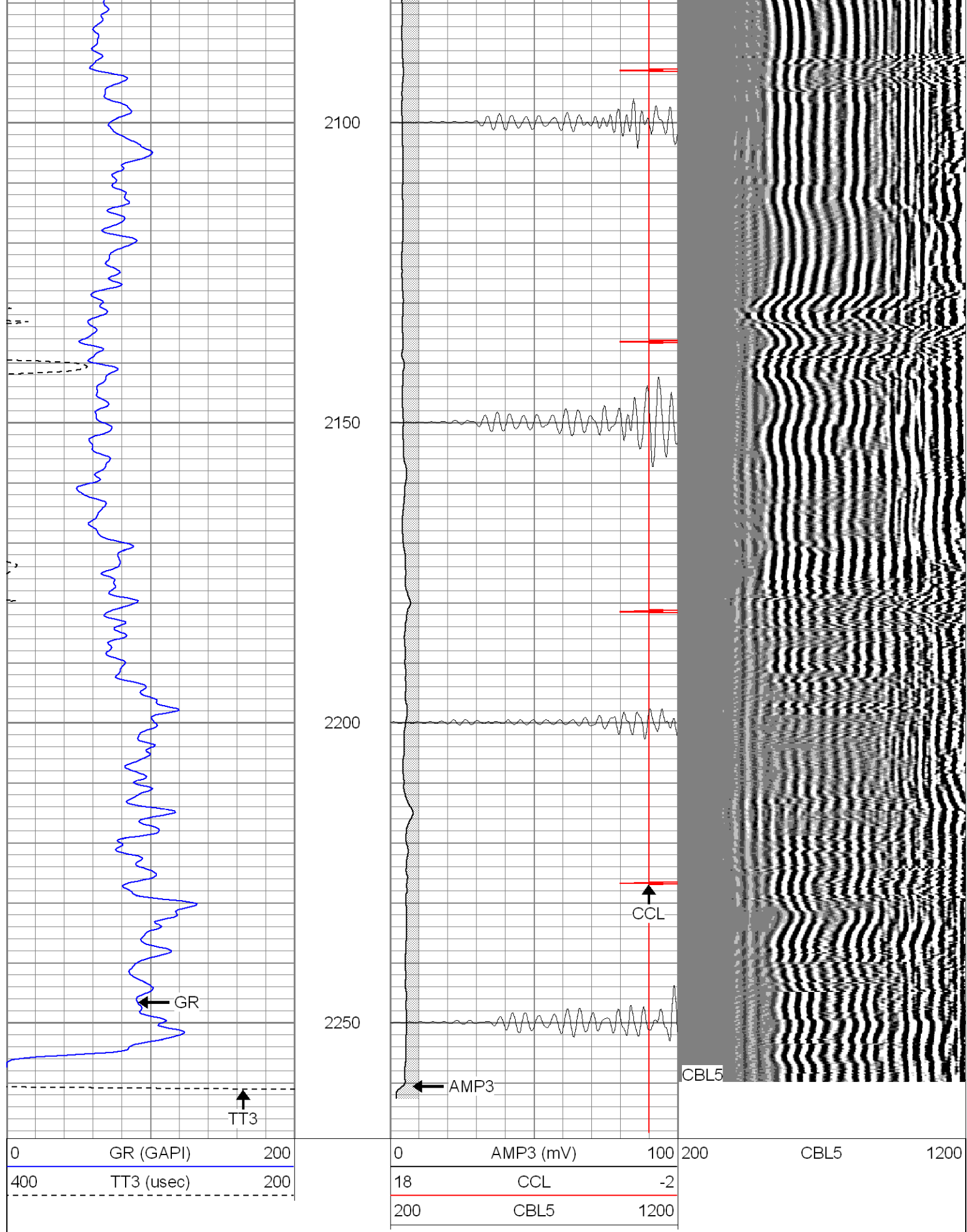
SUPERIOR

Black Lick, Pa.
Mercer, Pa.
Wooster, Oh.
Cleveland, Ok.
Trinidad, Co.

Repeat Section 0 PSI

Database File: hre23-10b41808.db
Dataset Pathname: pass1
Presentation Format: cblrt
Dataset Creation: Fri Apr 18 10:48:43 2008 by Log Open-Cased 071220
Charted by: Depth in Feet scaled 1:240





Calibration Report

Database File: hre23-10b41808.db

Cement Bond Log Calibration Report

Serial Number:	Titan5		
Tool Model:	T5		
Performed:	Fri Apr 18 07:21:12 2008		
Depth:	189.22	ft	
Casing Diameter:	5.5	in	
	3' Spacing	5' Spacing	
Signal Zero:	0	0	mV
Calibrated Amplitude:	85	85	mV
Reading at Signal Zero:	-0.04	0.0081543	V
Reading in Free Pipe:	1.55	2.4	V
Gain:	53.4591	35.5374	
Offset:	2.13836	-0.289783	

Gamma Ray Calibration Report

Serial Number:	Titan5	
Tool Model:	T2	
Performed:	Fri Apr 18 07:21:24 2008	
Calibrator Value:	1.0	GAPI
Background Reading:	0.0	cps
Calibrator Reading:	1.0	cps
Sensitivity:	1.1000	GAPI/cps