



**SUPERIOR**  
Black Lick, Pa.  
Mercer, Pa.  
Wooster, Oh.  
Cleveland, Ok.  
Trinidad, Co.

# CEMENT BOND GAMMA RAY 1000 PSI

Company XTO Energy Inc.  
Well Hill Ranch East 23-10  
Field Purgatorie River  
County Las Animas  
State CO

Company XTO Energy Inc.  
Well Hill Ranch East 23-10  
Field Purgatorie River  
County Las Animas  
State CO

Location: API # : 05 071 09441 00

1730' FSL & 2417' FEL

SEC 23 TWP 34S RGE 67W

Permanent Datum Ground Level Elevation 7681'  
Log Measured From Ground Level  
Drilling Measured From Ground Level

Other Services  
TEMP  
Elevation  
K.B. -----  
D.F. -----  
G.L. 7681'

Date		4/15/08					
Run Number		one					
Depth Driller		2350'					
Depth Logger		2267'					
Bottom Logged Interval		2263'					
Top Log Interval		Surf.					
Open Hole Size		7 7/8"					
Type Fluid		water					
Density / Viscosity		///					
Max. Recorded Temp.		137F					
Estimated Cement Top		1250'					
Time Well Ready		2:30					
Time Logger on Bottom		2:45					
Equipment Number		0703					
Location		Trinidad					
Recorded By		Worley					
Witnessed By		Mr. Rensick					
Borehole Record		Tubing Record					
Run Number	Bit	From	To	Size	Weight	From	To
Casing Record	Size		Wgt/Ft		Top		Bottom
Surface String	8 5/8"				00		491'
Prot. String							
Production String	5 1/2"				00		NA
Liner							

<<< Fold Here >>>

All interpretations are opinions based on inferences from electrical or other measurements and we cannot and do not guarantee the accuracy or correctness of any interpretation, and we shall not, except in the case of gross or willful negligence on our part, be liable or responsible for any loss, costs, damages, or expenses incurred or sustained by anyone resulting from any interpretation made by any of our officers, agents or employees. These interpretations are also subject to our general terms and conditions set out in our current Price Schedule.

## Comments

Lorencito, 2.2 miles past Compressor station take right,  
at next Y stay right up hill, at top of hill take hard left,  
take third left, at next Y stay right to location.

CBL ran under 1000 PSI.



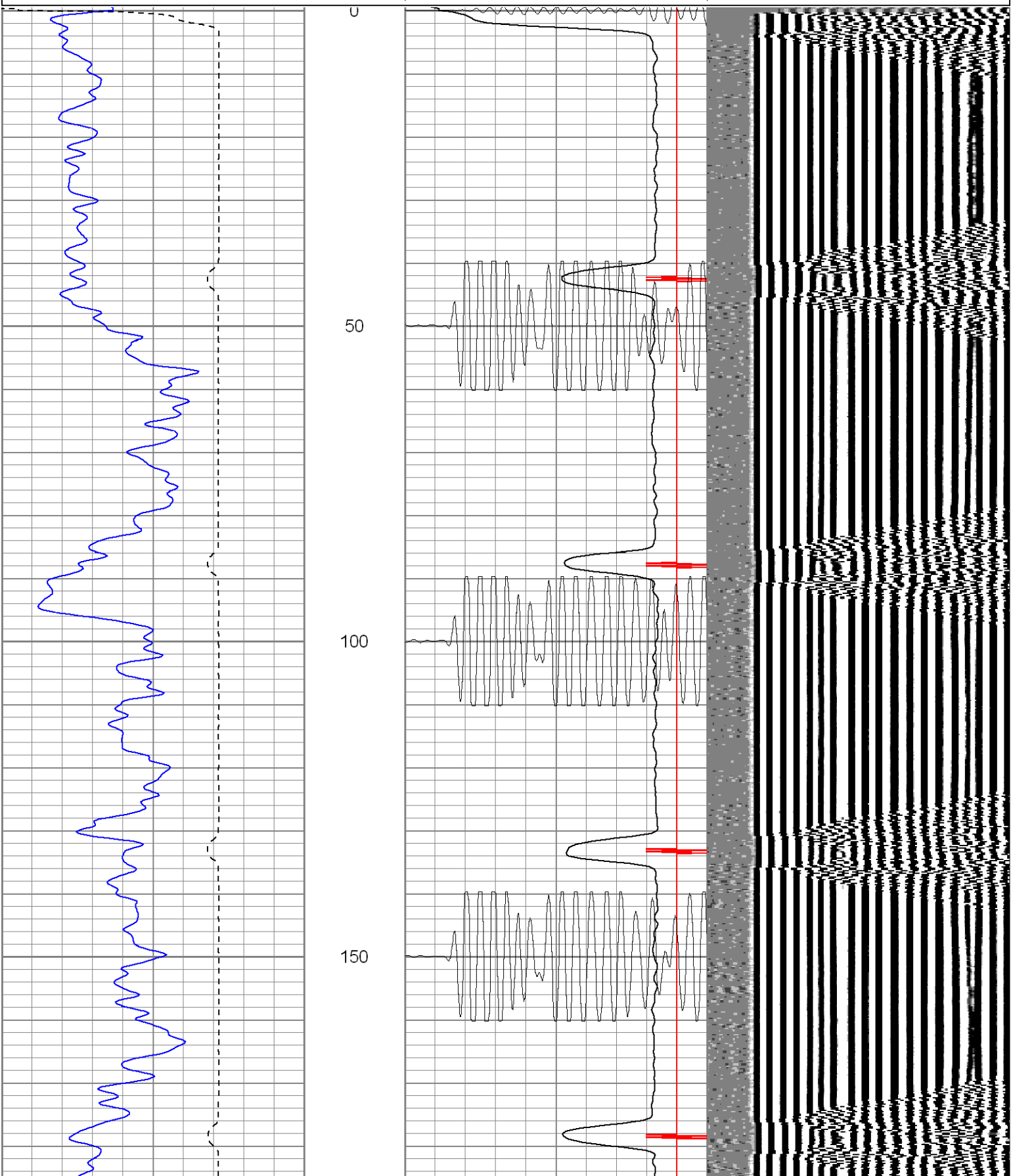
**SUPERIOR**

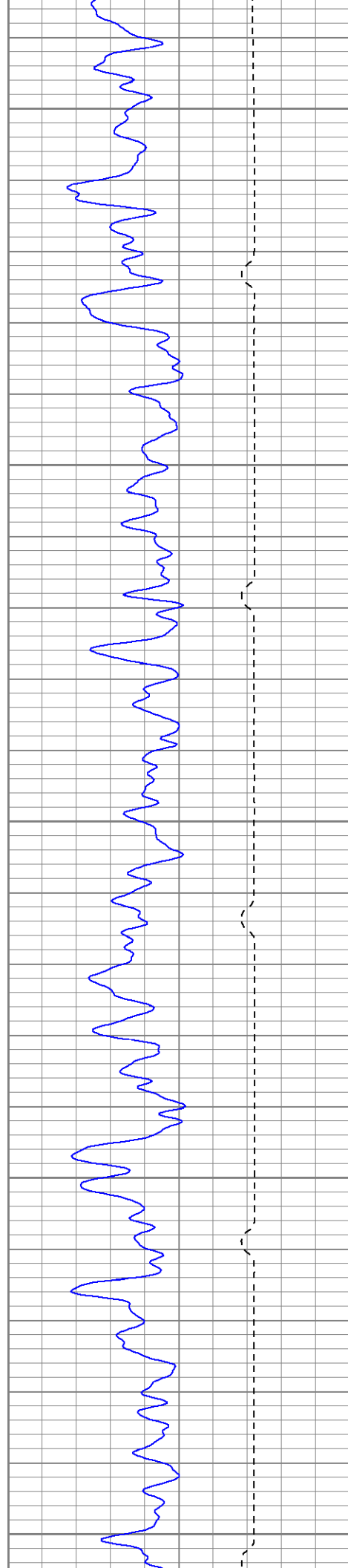
Black Lick, Pa.  
Mercer, Pa.  
Wooster, Oh.  
Cleveland, Ok.  
Trinidad, Co.

# Main Pass 1000 PSI

Database File: hre23-10b41508.db  
Dataset Pathname: pass3.1  
Presentation Format: cblrt  
Dataset Creation: Tue Apr 15 15:45:20 2008 by Calc Open-Cased 071220  
Charted by: Depth in Feet scaled 1:240

0	GR (GAPI)	200	0	AMP3 (mV)	100	200	CBL5	1200
400	TT3 (usec)	200	18	CCL	-2			
			200	CBL5	1200			





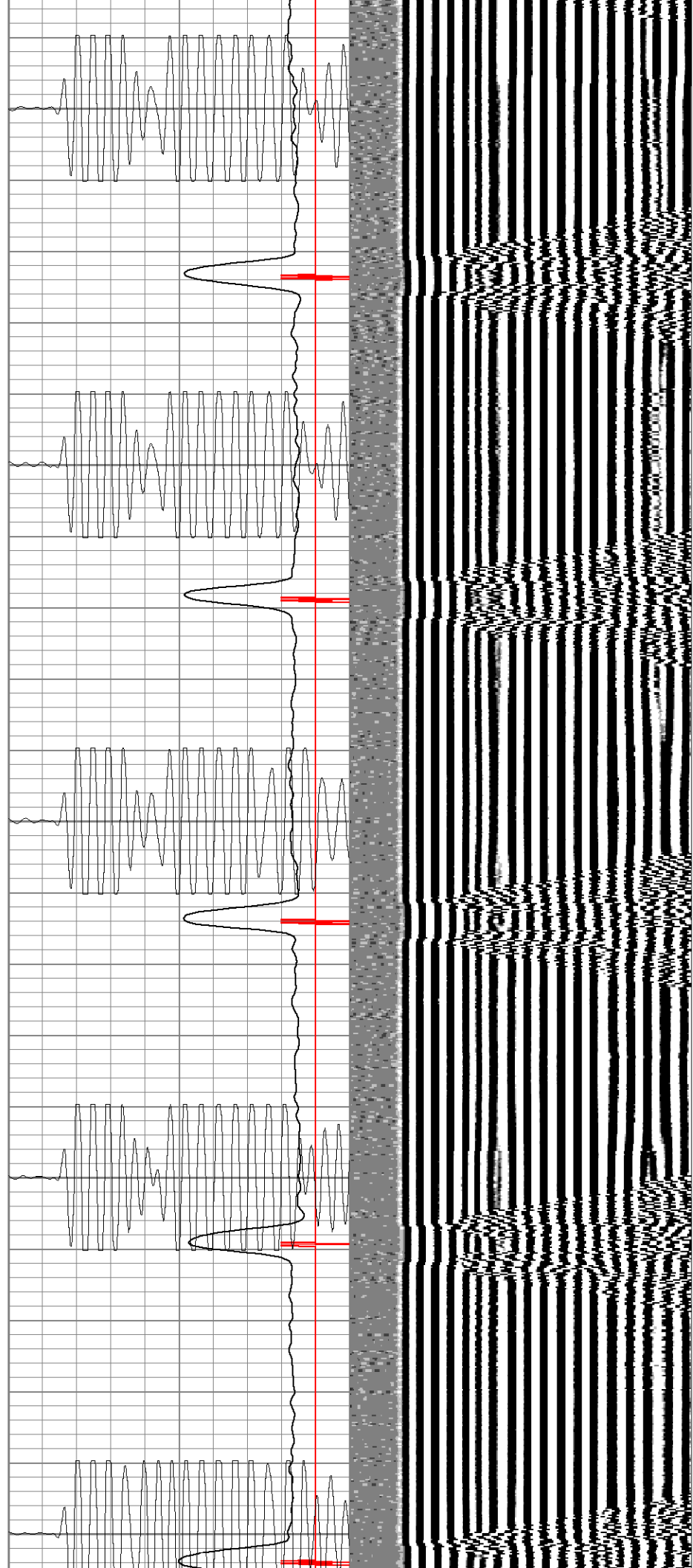
200

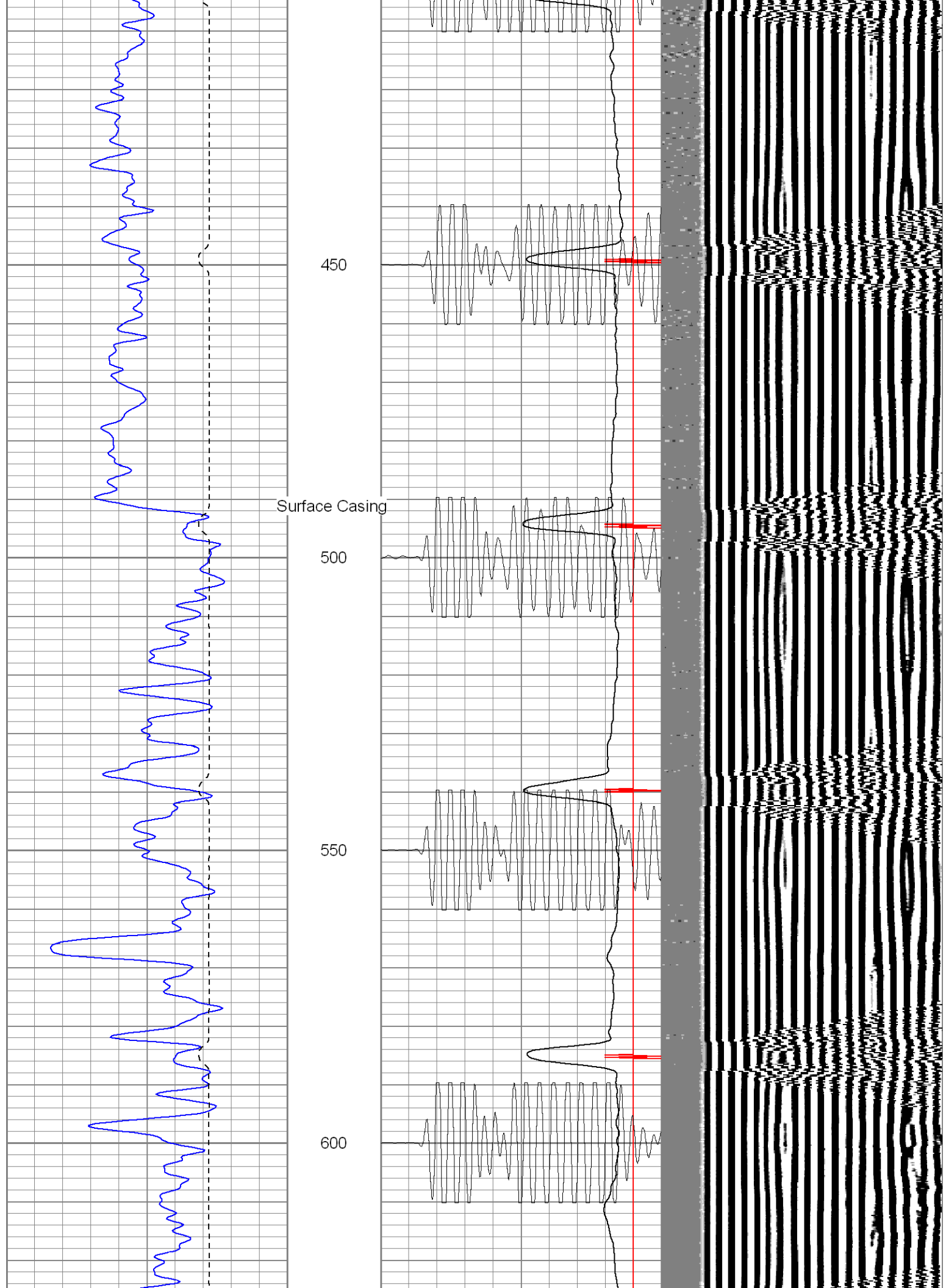
250

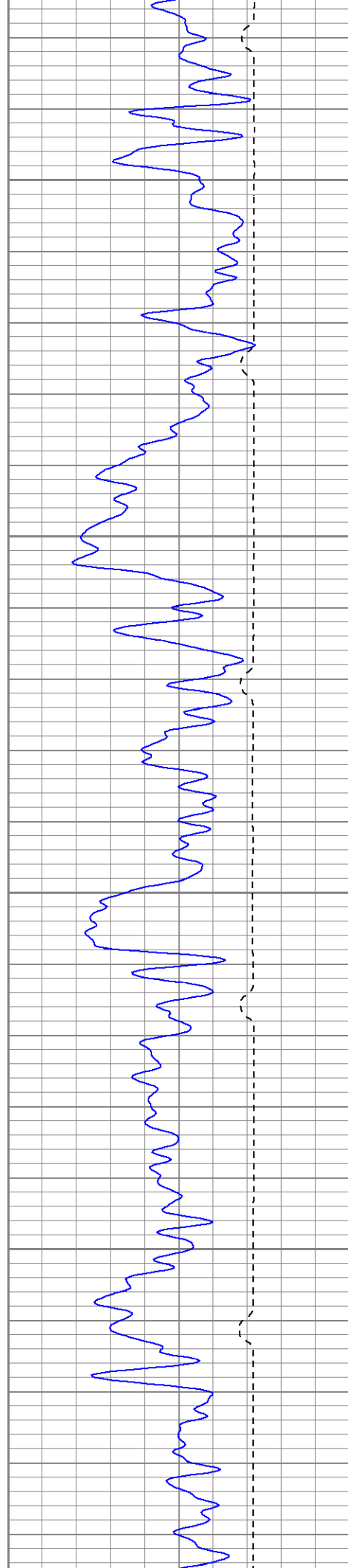
300

350

400





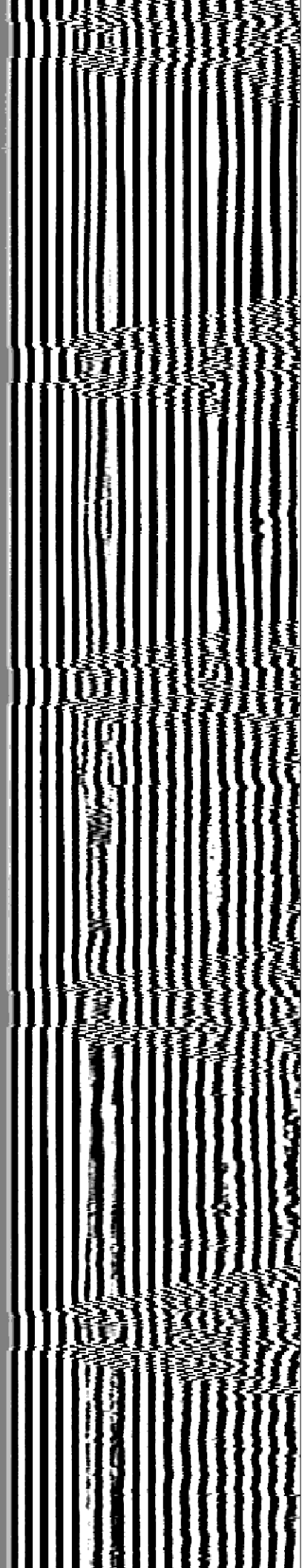
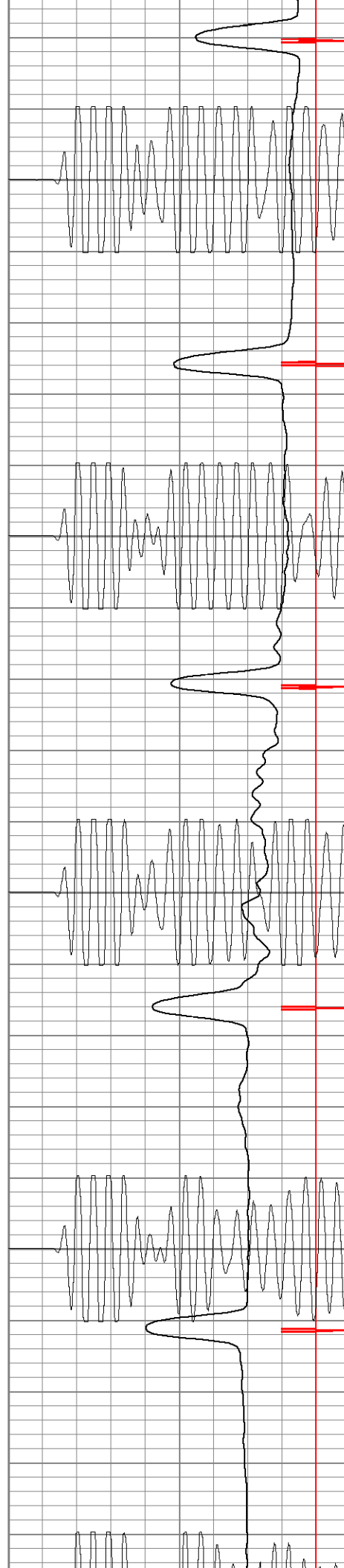


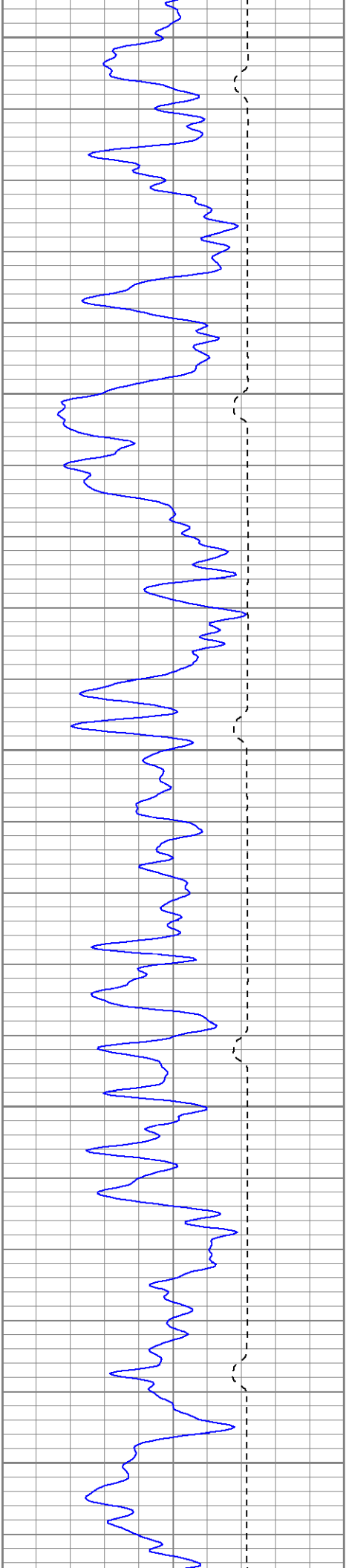
650

700

750

800





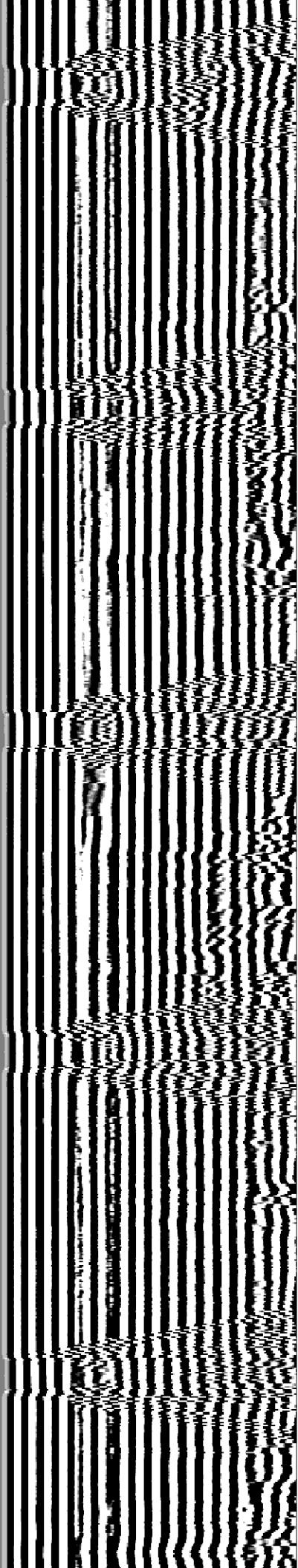
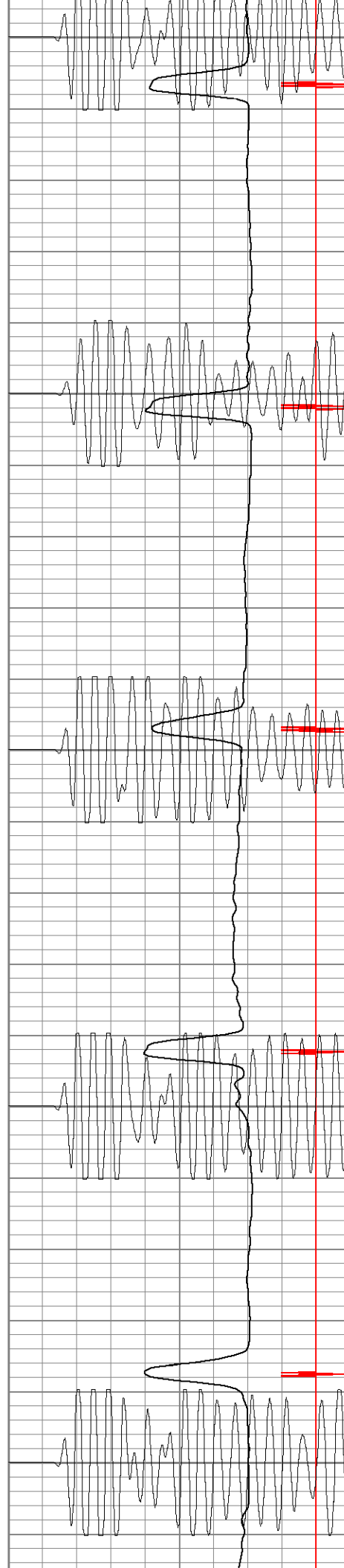
850

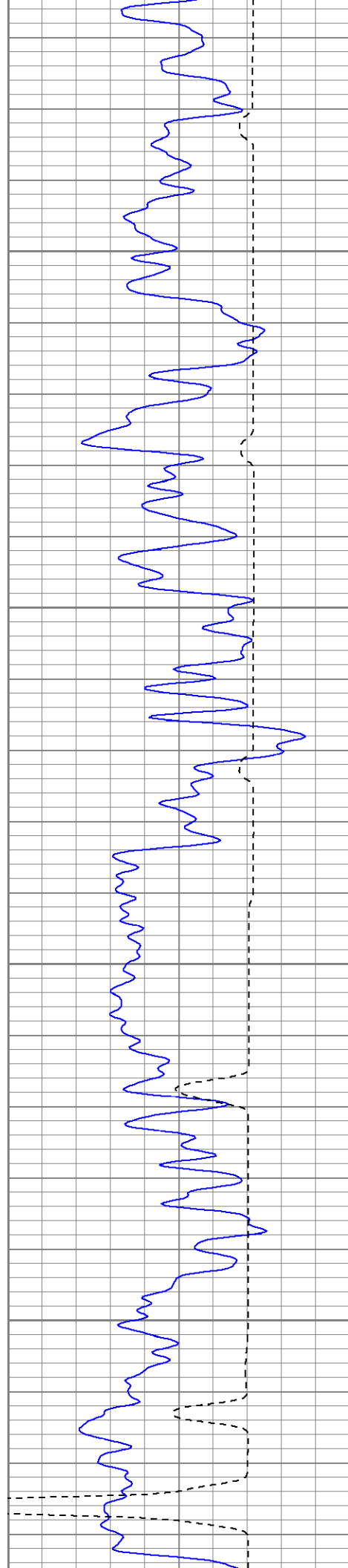
900

950

1000

1050



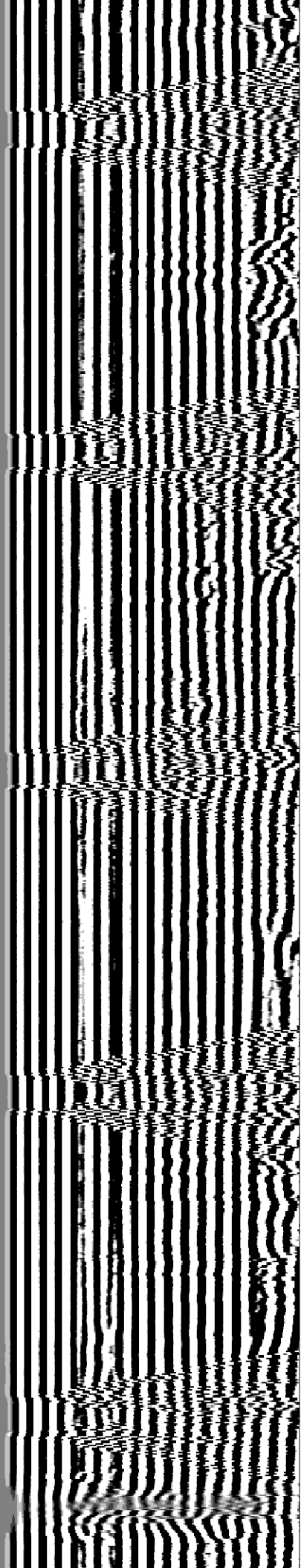
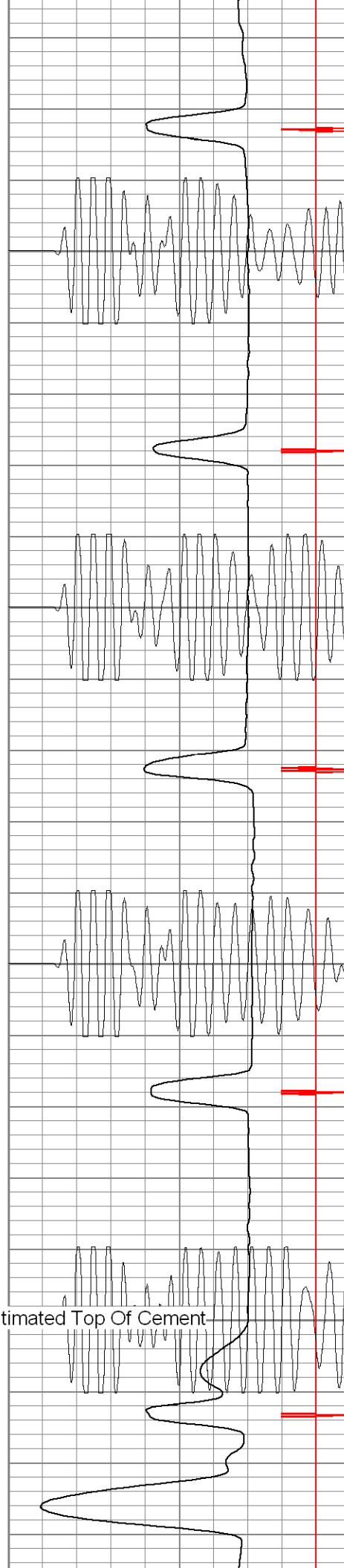


1100

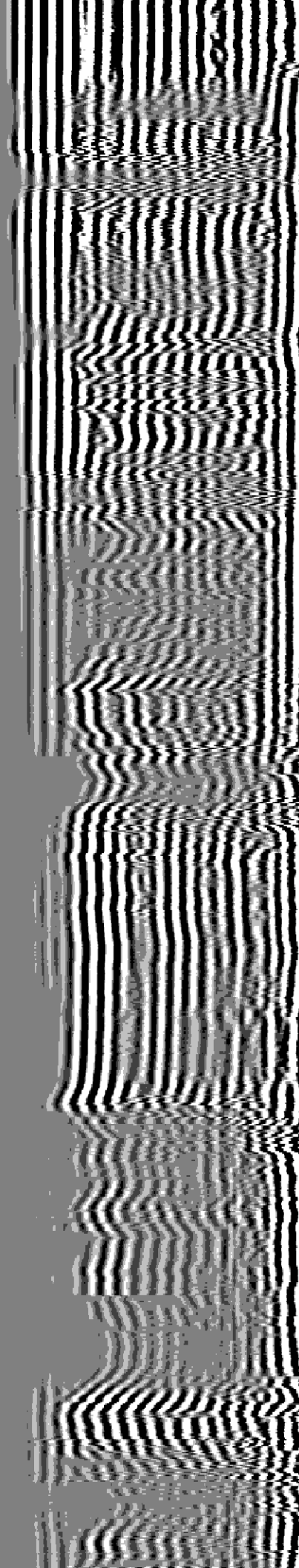
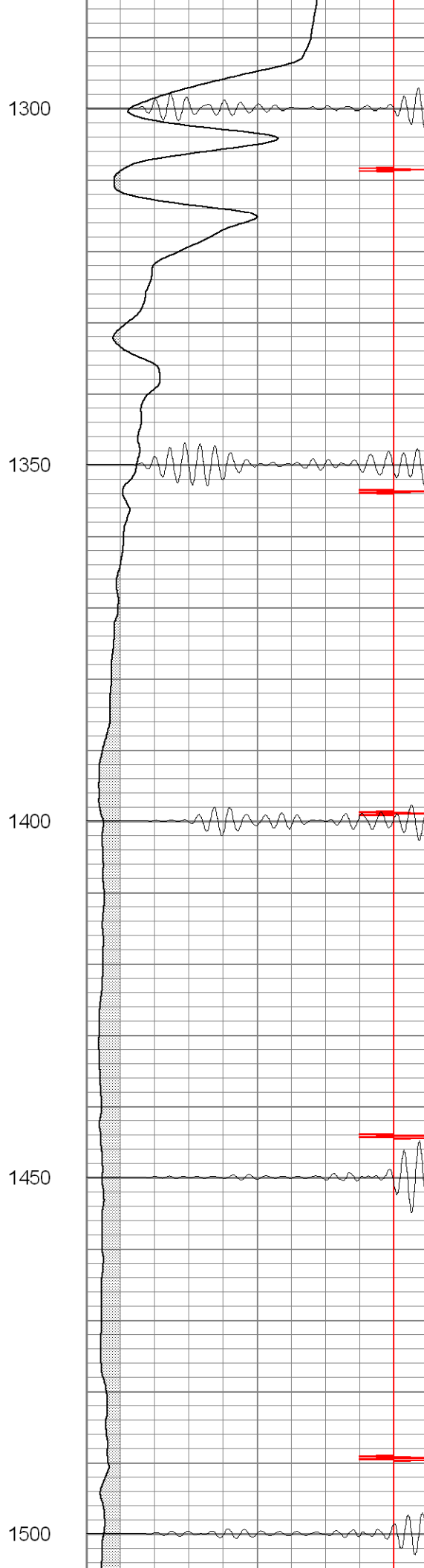
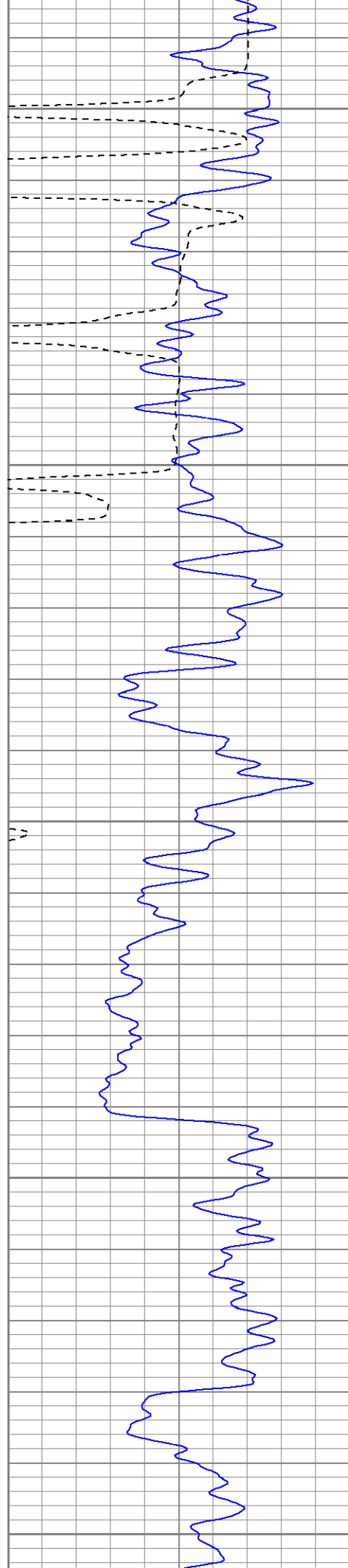
1150

1200

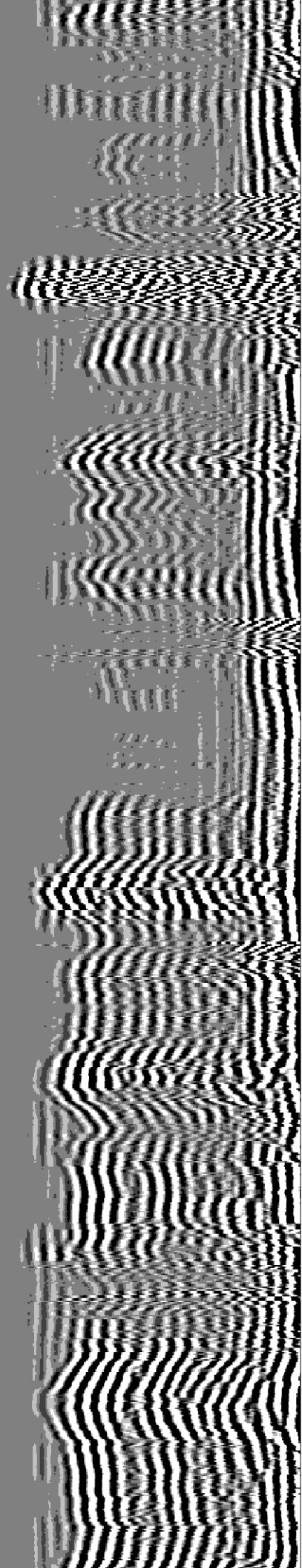
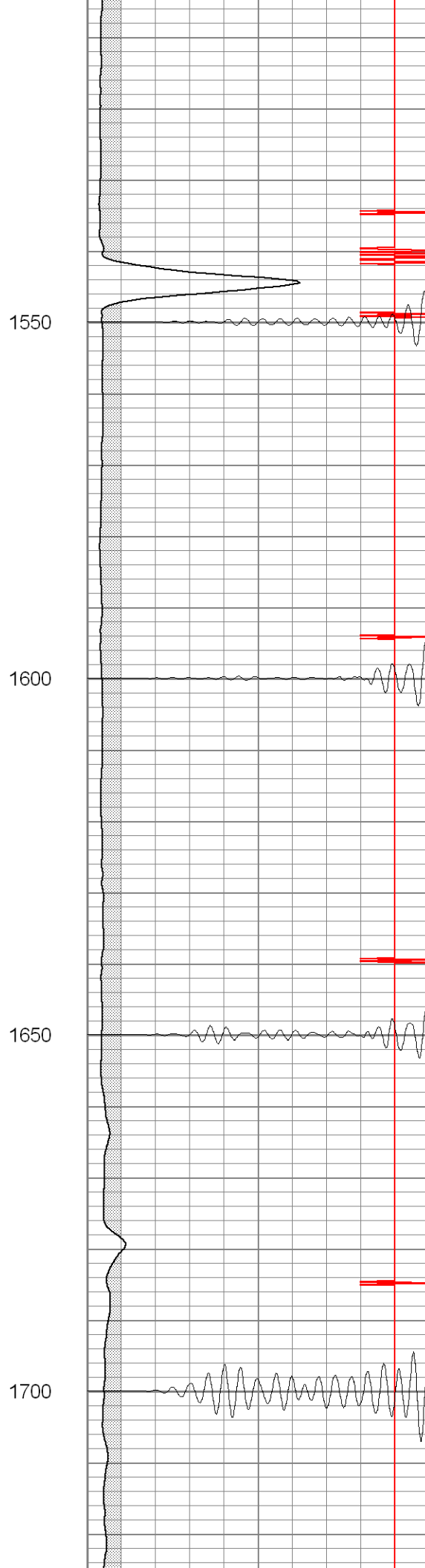
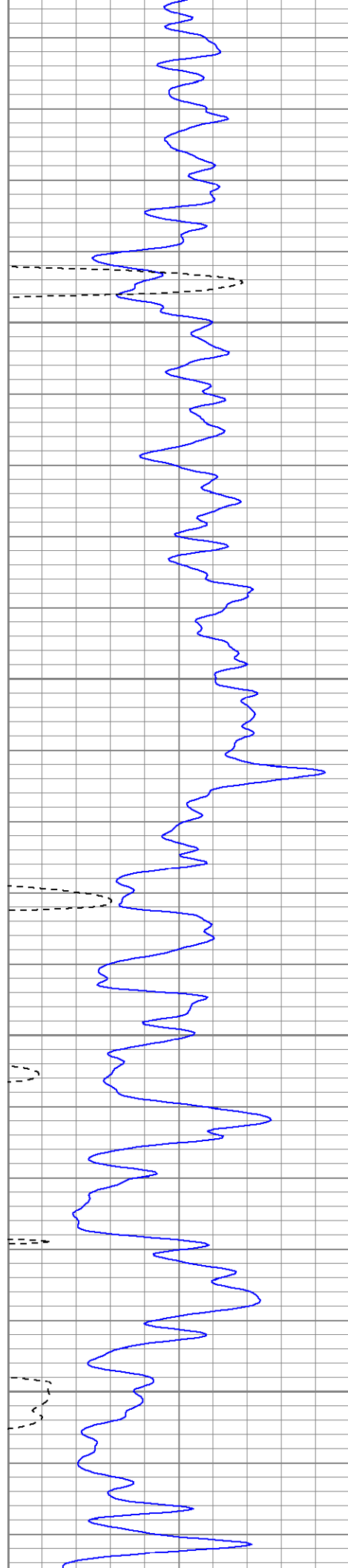
1250 Estimated Top Of Cement

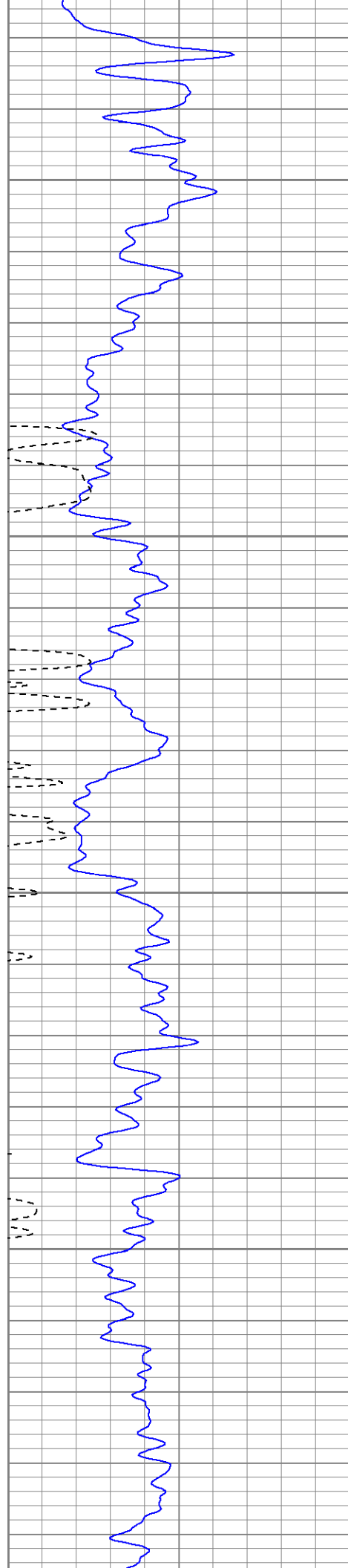










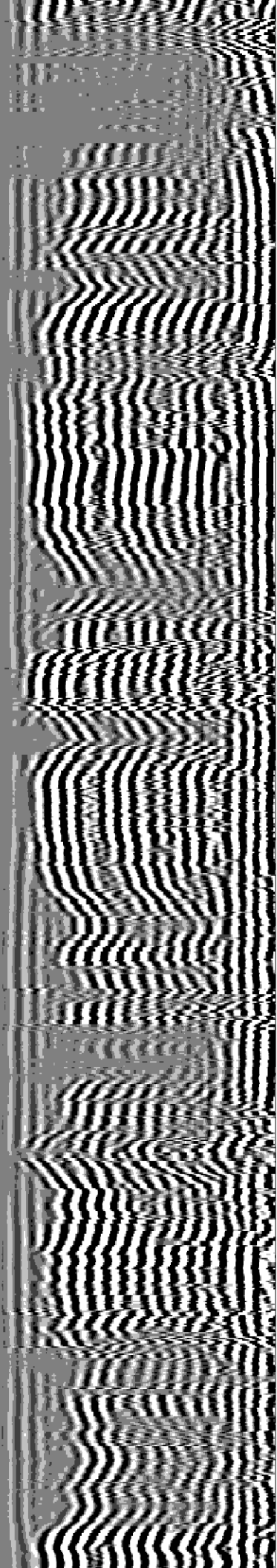


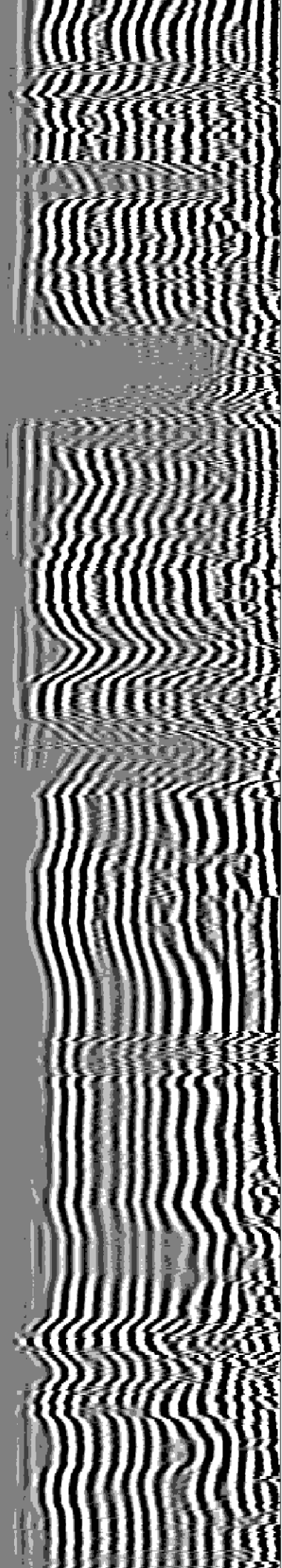
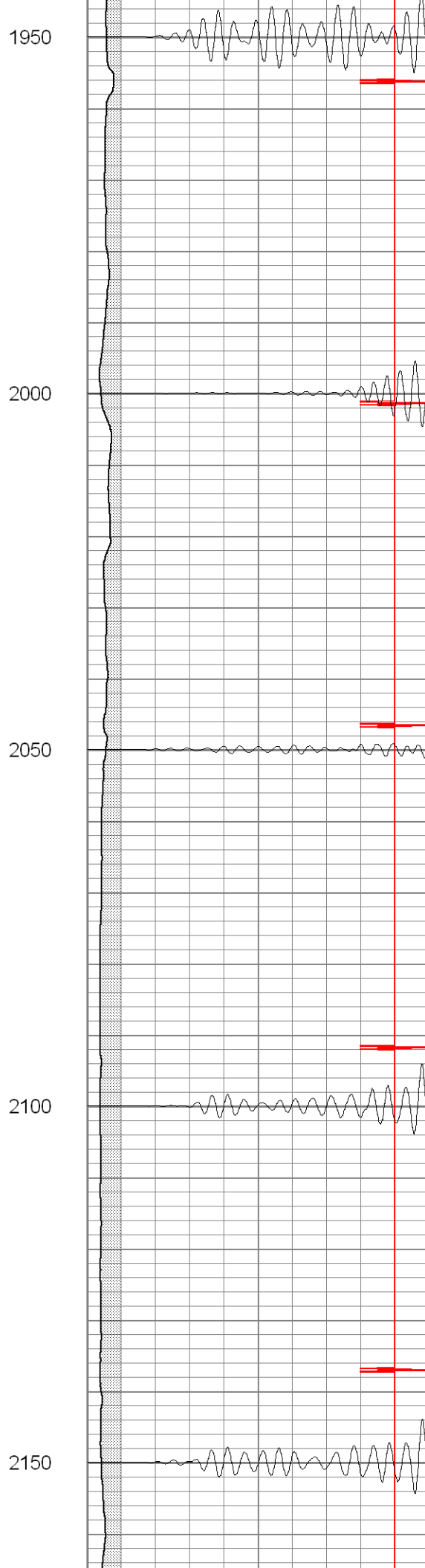
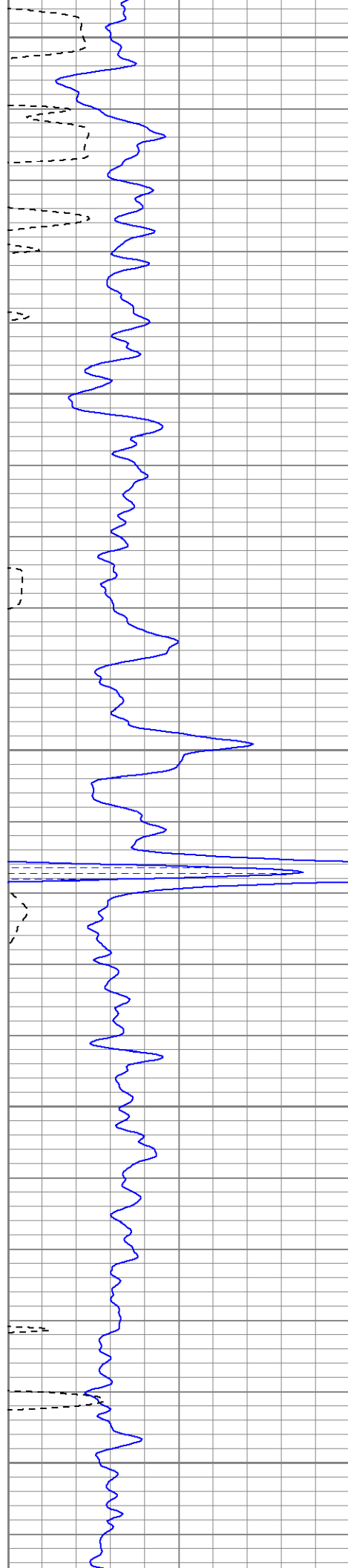
1750

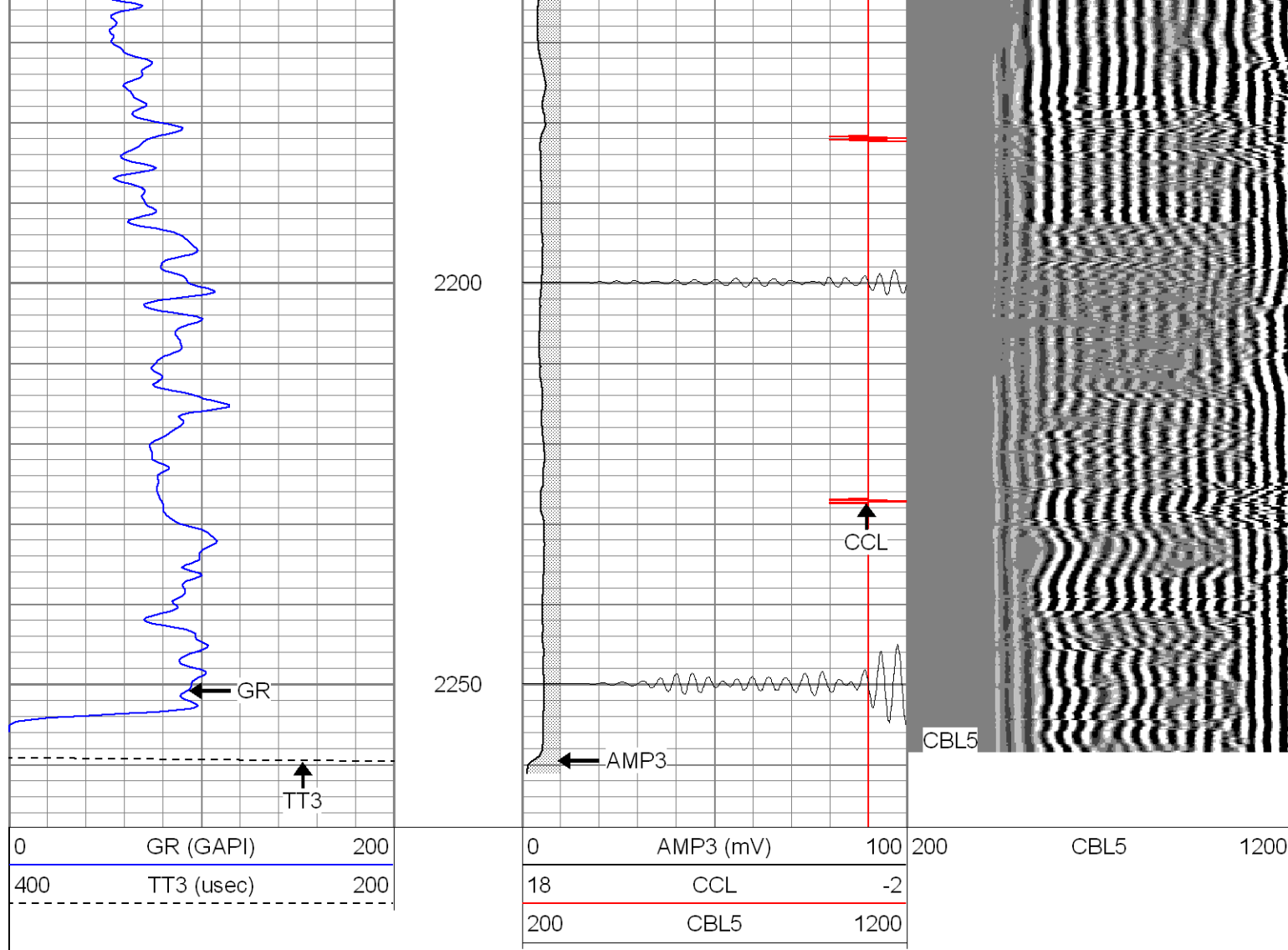
1800

1850

1900





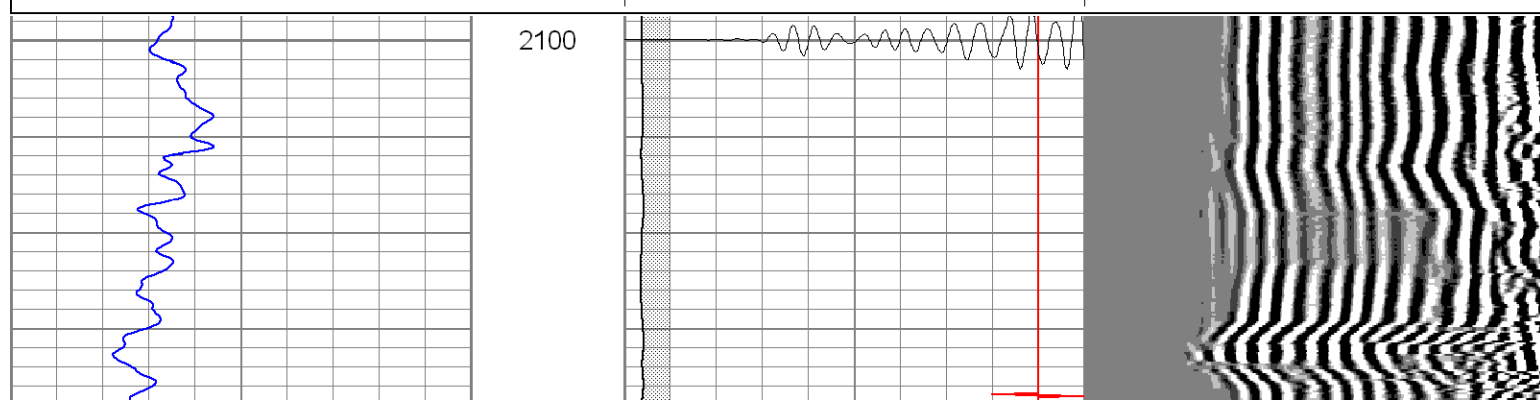
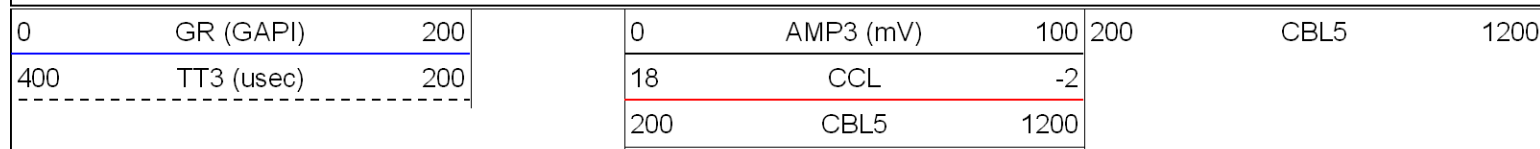


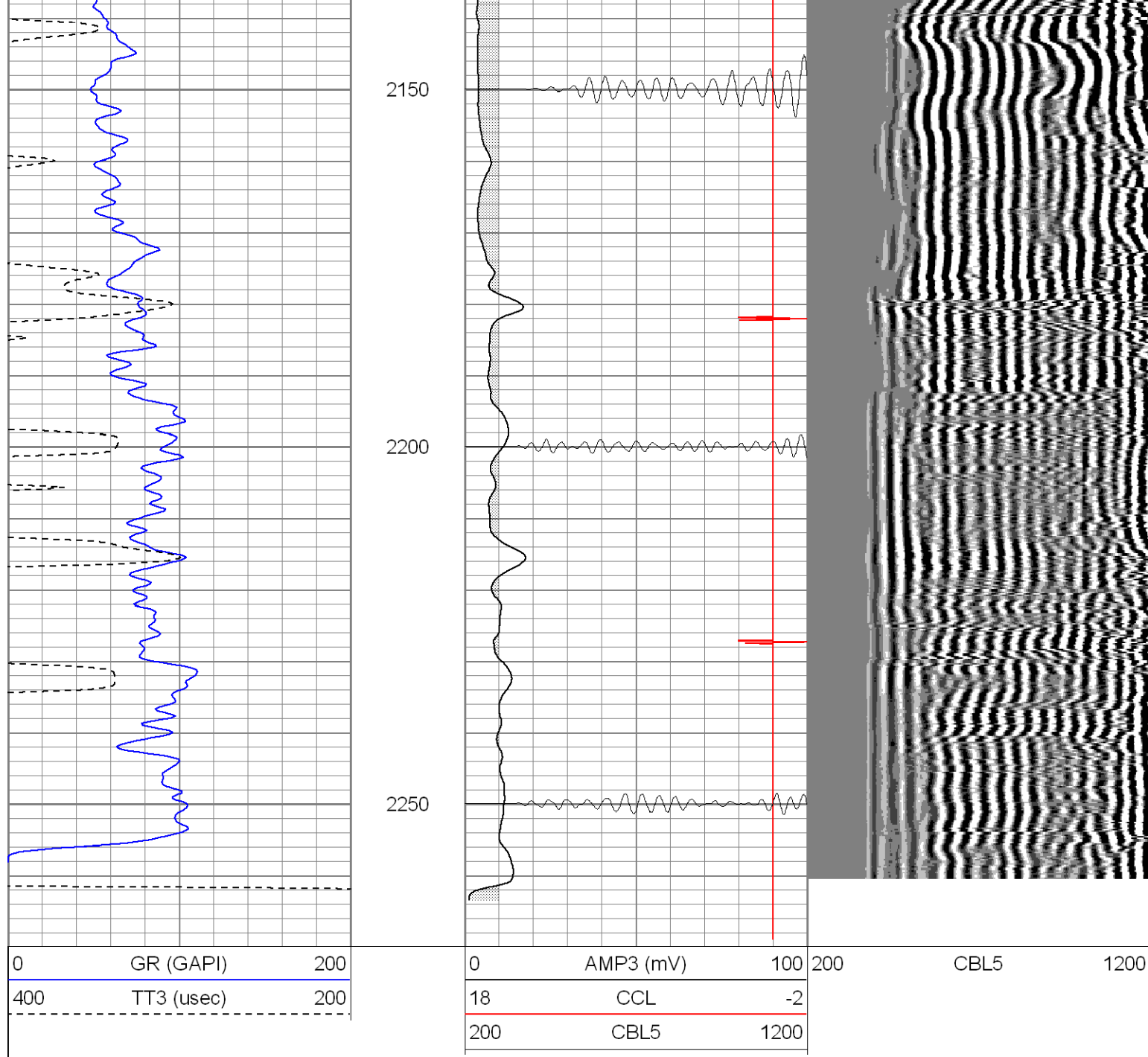
**SUPERIOR**

Black Lick, Pa.  
Mercer, Pa.  
Wooster, Oh.  
Cleveland, Ok.  
Trinidad, Co.

# Repeat Section 0 PSI

Database File: hre23-10b41508.db  
Dataset Pathname: pass1  
Presentation Format: cblrt  
Dataset Creation: Tue Apr 15 14:20:55 2008 by Log Open-Cased 071220  
Charted by: Depth in Feet scaled 1:240





### Calibration Report

Database File: hre23-10b41508.db  
 Dataset Pathname: pass1  
 Dataset Creation: Tue Apr 15 14:20:55 2008 by Log Open-Cased 071220

### Cement Bond Log Calibration Report

Serial Number: Titan6  
 Tool Model: T6  
 Performed: Tue Apr 15 14:16:18 2008

Depth: 0 ft  
 Casing Diameter: 0 in

3' Spacing      5' Spacing

Signal Zero:	0	0	mV
Calibrated Amplitude:	85	85	mV
Reading at Signal Zero:	-0.02	0	V
Reading in Free Pipe:	1.2	1.1	V



Gain:	69.6721	77.2727
Offset:	1.39344	0

# Gamma Ray Calibration Report

Serial Number:	titan6	
Tool Model:	T6	
Performed:	Tue Apr 15 14:14:40 2008	
Calibrator Value:	1.0	GAPI
Background Reading:	0.0	cps
Calibrator Reading:	1.0	cps
Sensitivity:	1.0000	GAPI/cps