



SUPERIOR
Black Lick, Pa.
Mercer, Pa.
Wooster, Oh.
Cleveland, Ok.
Trinidad, Co.

DUAL INDUCTION LOG

Company XTO Energy Inc.
Well Hill Ranch East 23-10
Field Purgatoire River
County Las Animas State Colorado

Location: API # : 05 071 09441 00

1730' FSL & 2417' FEL

SEC 23 TWP 34S RGE 67W

Permanent Datum Ground Level Elevation 7681'
Log Measured From Ground Level
Drilling Measured From Ground Level

Other Services
CDL
NEUTRON
Elevation
K.B. -----
D.F. -----
G.L. 7681'

Date 4-12-08

Run Number One

Depth Driller 2350'

Depth Logger 2345'

Bottom Logged Interval 2343'

Top Log Interval Surface Casing

Casing Driller 8 5/8" @ 491'

Casing Logger 491'

Bit Size 7 7/8"

Type Fluid in Hole Water

Density / Viscosity ///

pH / Fluid Loss ///

Source of Sample ///

Rm @ Meas. Temp ///

Rmf @ Meas. Temp ///

Rmc @ Meas. Temp ///

Source of Rmf / Rmc ///

Rm @ BHT ///

Time Circulation Stopped 11:00 P.M.

Time Logger on Bottom 8:40 A.M.

Maximum Recorded Temperature 104 DEG F

Equipment Number T697

Location Trinidad

Recorded By J. Cappellucci

Witnessed By Mr. Don Johnson

<<< Fold Here >>>

All interpretations are opinions based on inferences from electrical or other measurements and we cannot and do not guarantee the accuracy or correctness of any interpretation, and we shall not, except in the case of gross or willful negligence on our part, be liable or responsible for any loss, costs, damages, or expenses incurred or sustained by anyone resulting from any interpretation made by any of our officers, agents or employees. These interpretations are also subject to our general terms and conditions set out in our current Price Schedule.

Comments

Well Directions:
Lorencito, 2.2 miles past Compressor station take right,
at next Y stay right up hill, At top of hill take hard left,
take third left, at next Y stay right to location.

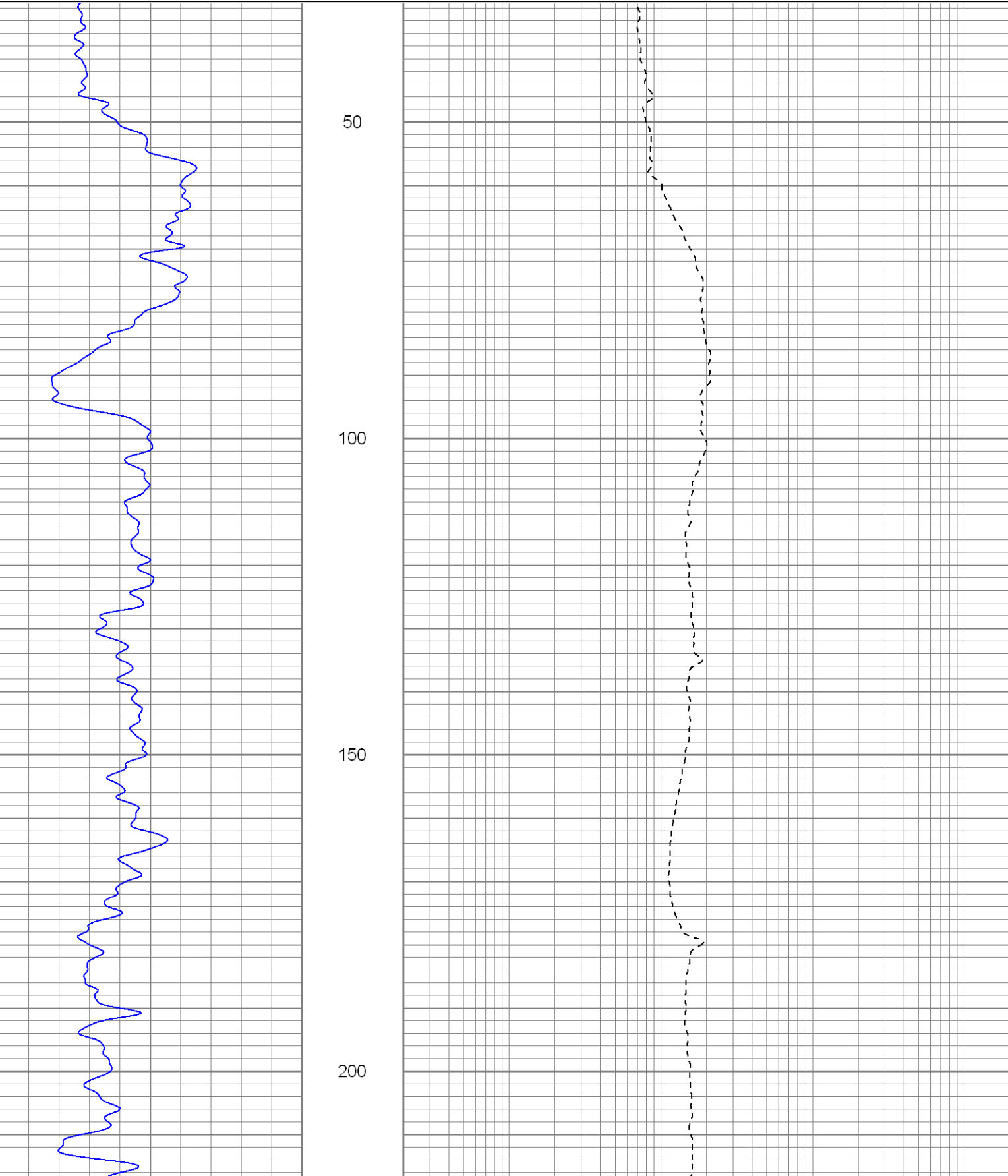


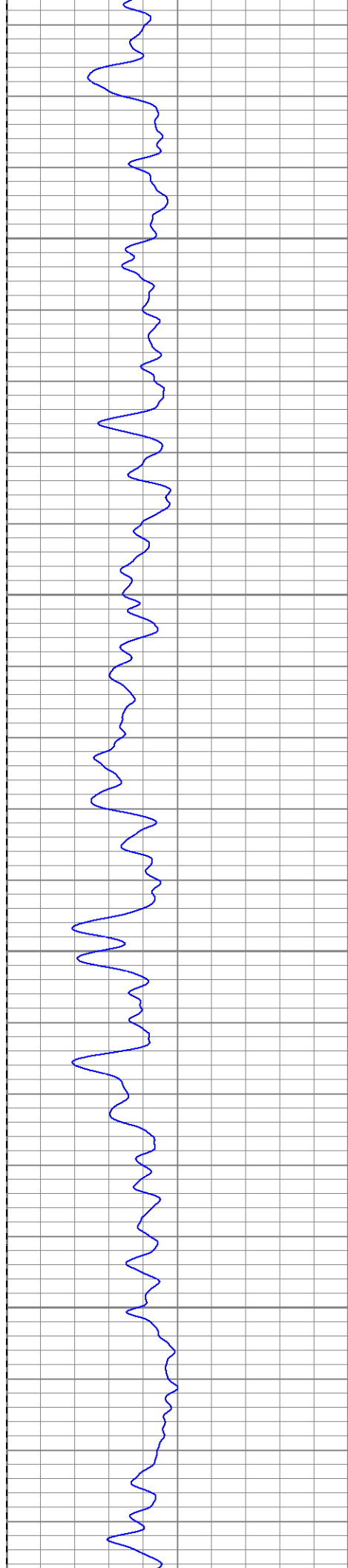
SUPERIOR
Black Lick, Pa.
Mercer, Pa.
Wooster, Oh.
Cleveland, Ok.
Trinidad, Co.

Main Pass

Database File: xtohre2310.db
Dataset Pathname: pass2.1
Presentation Format: dil
Dataset Creation: Sat Apr 12 10:16:01 2008 by Calc Open-Cased 070814
Charted by: Depth in Feet scaled 1:240

| | | | | | |
|------|-----------|-----|-----|--------------|------|
| 0 | GR (GAPI) | 200 | 0.2 | RILM (Ohm-m) | 2000 |
| -200 | SP (mV) | 0 | 0.2 | RILD (Ohm-m) | 2000 |
| | | | 0.2 | RLL3 (Ohm-m) | 2000 |



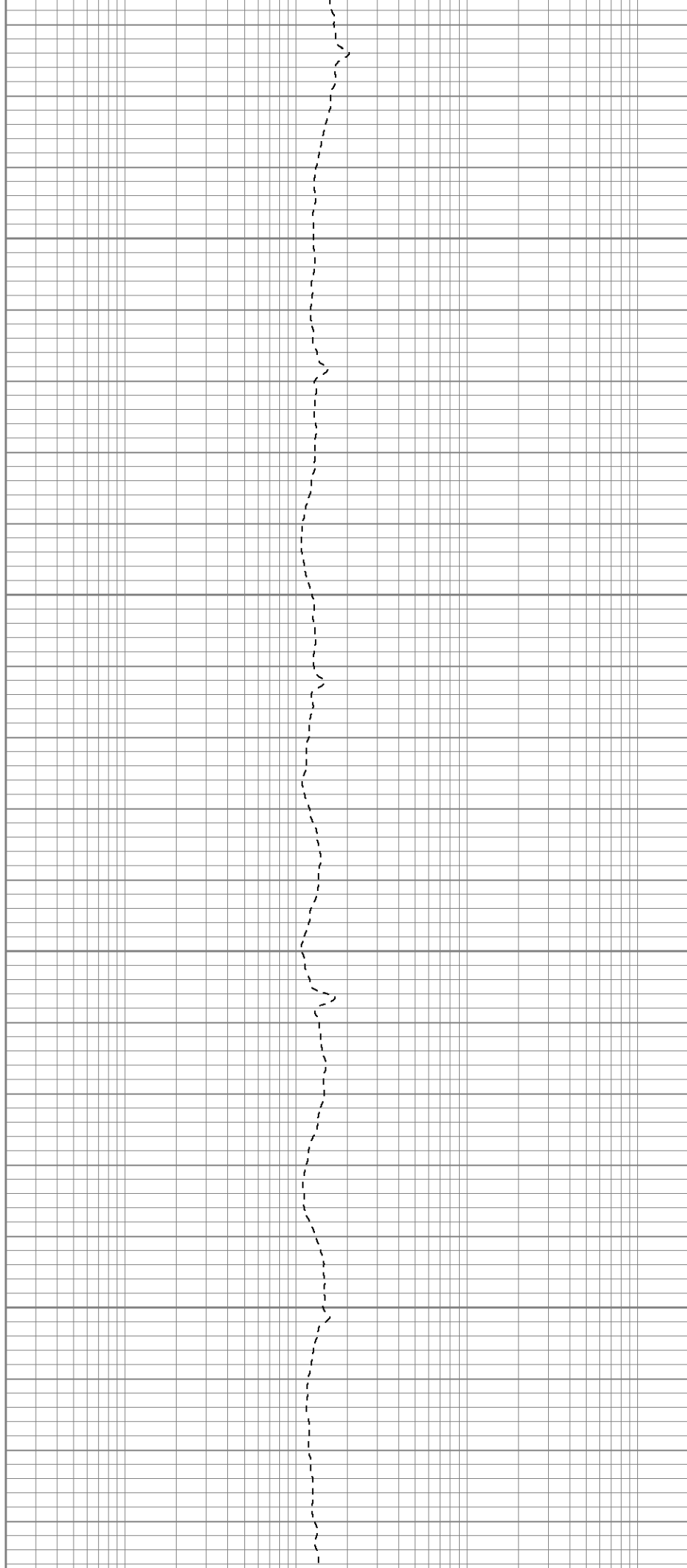


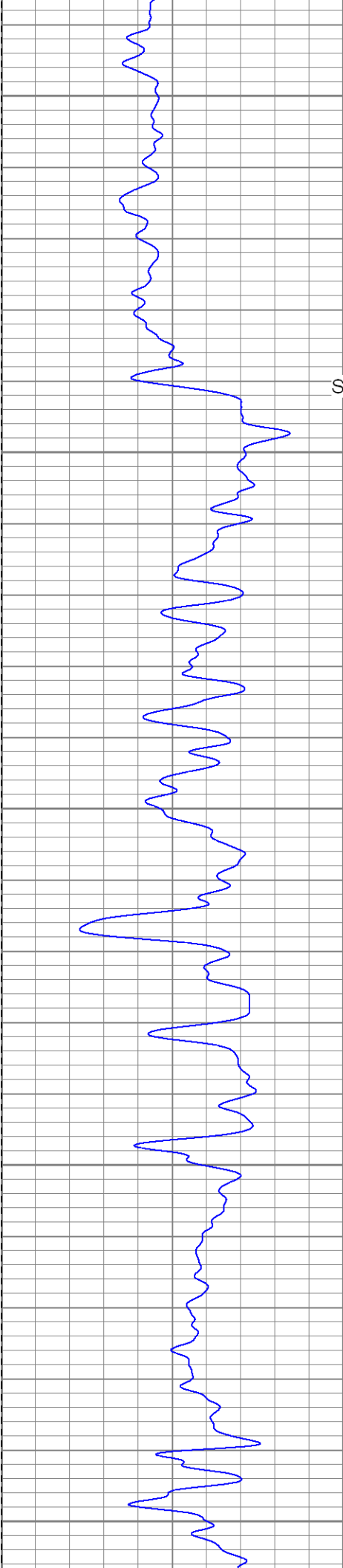
250

300

350

400





450

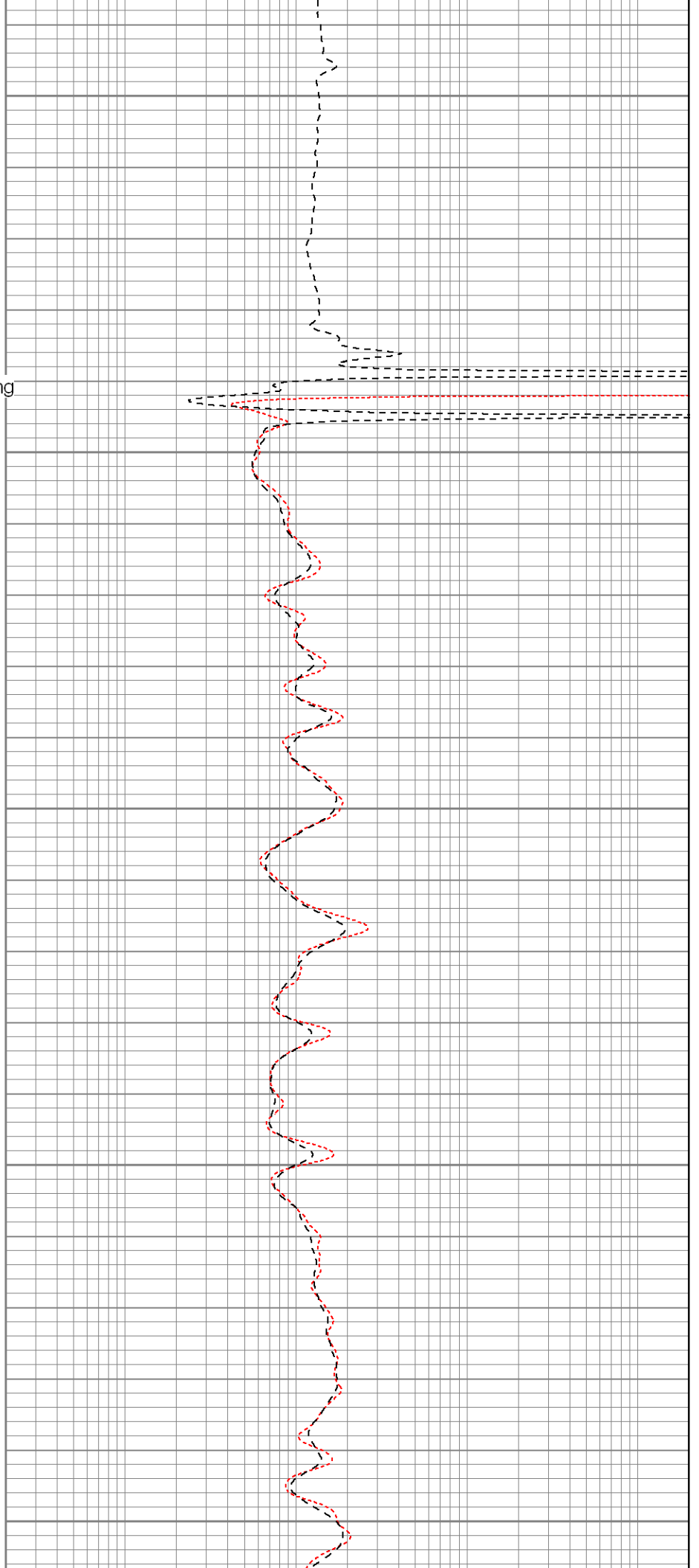
Surface Casing

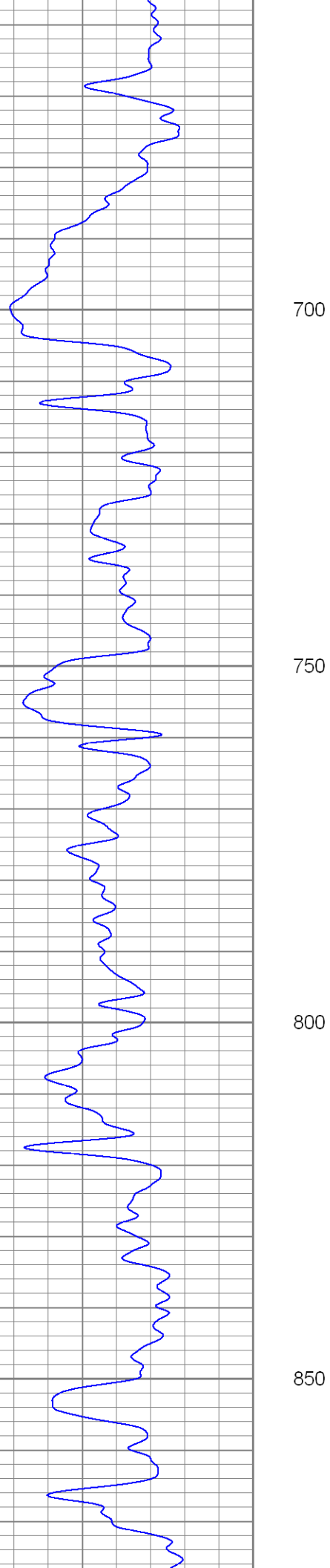
500

550

600

650



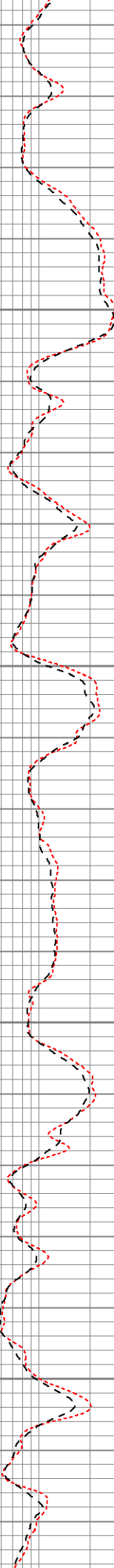


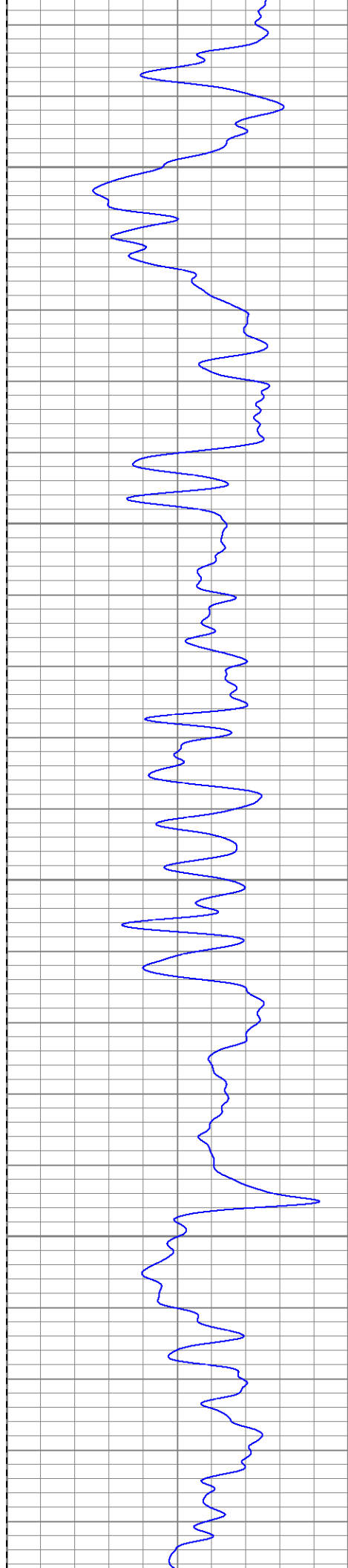
700

750

800

850



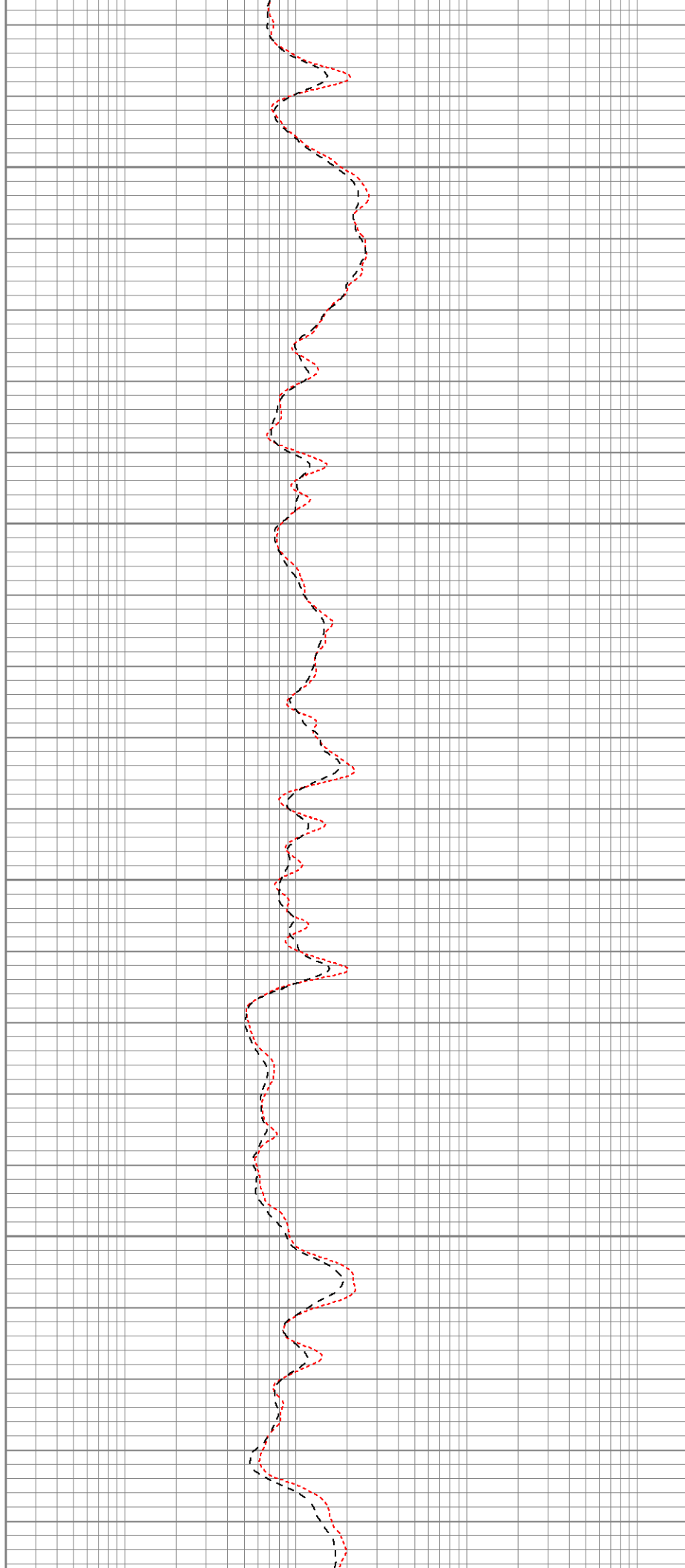


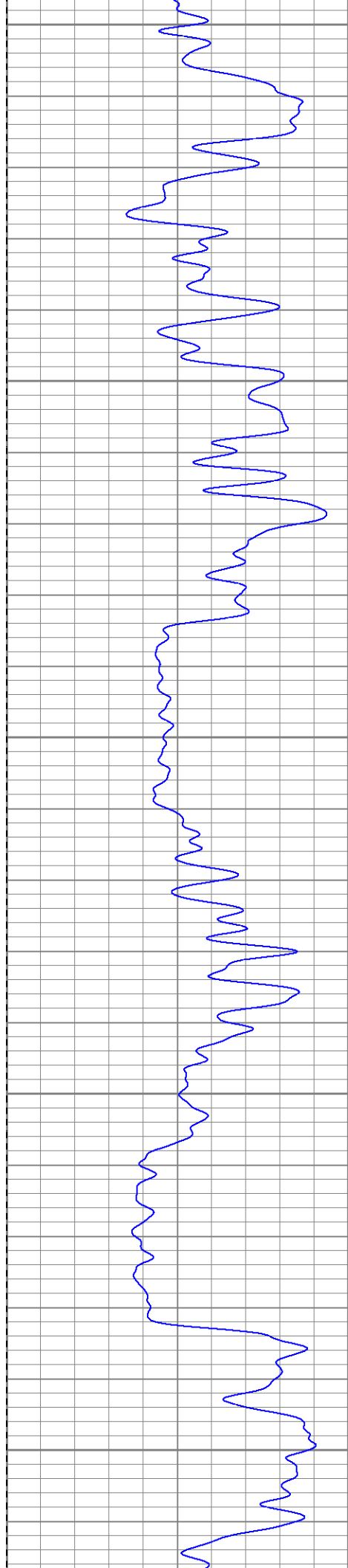
900

950

1000

1050





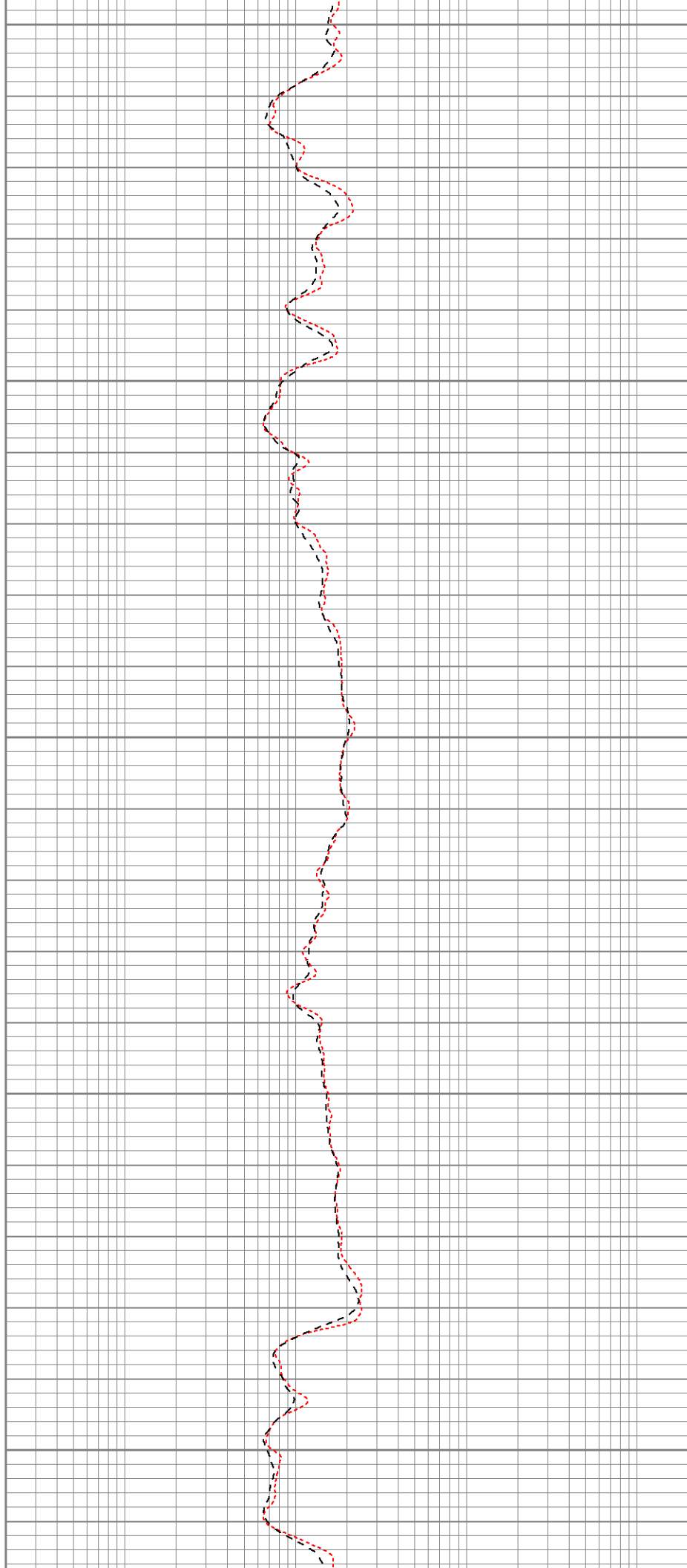
1100

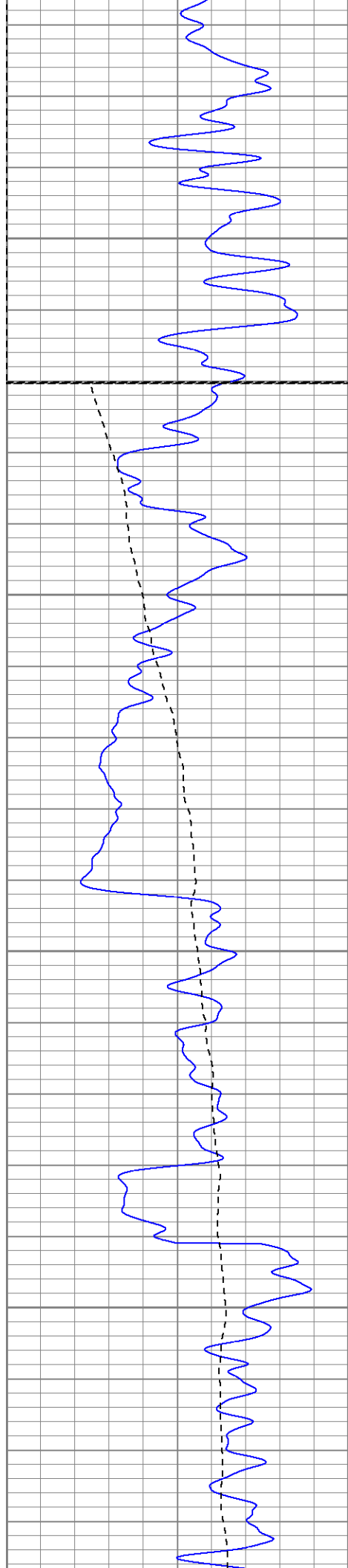
1150

1200

1250

1300





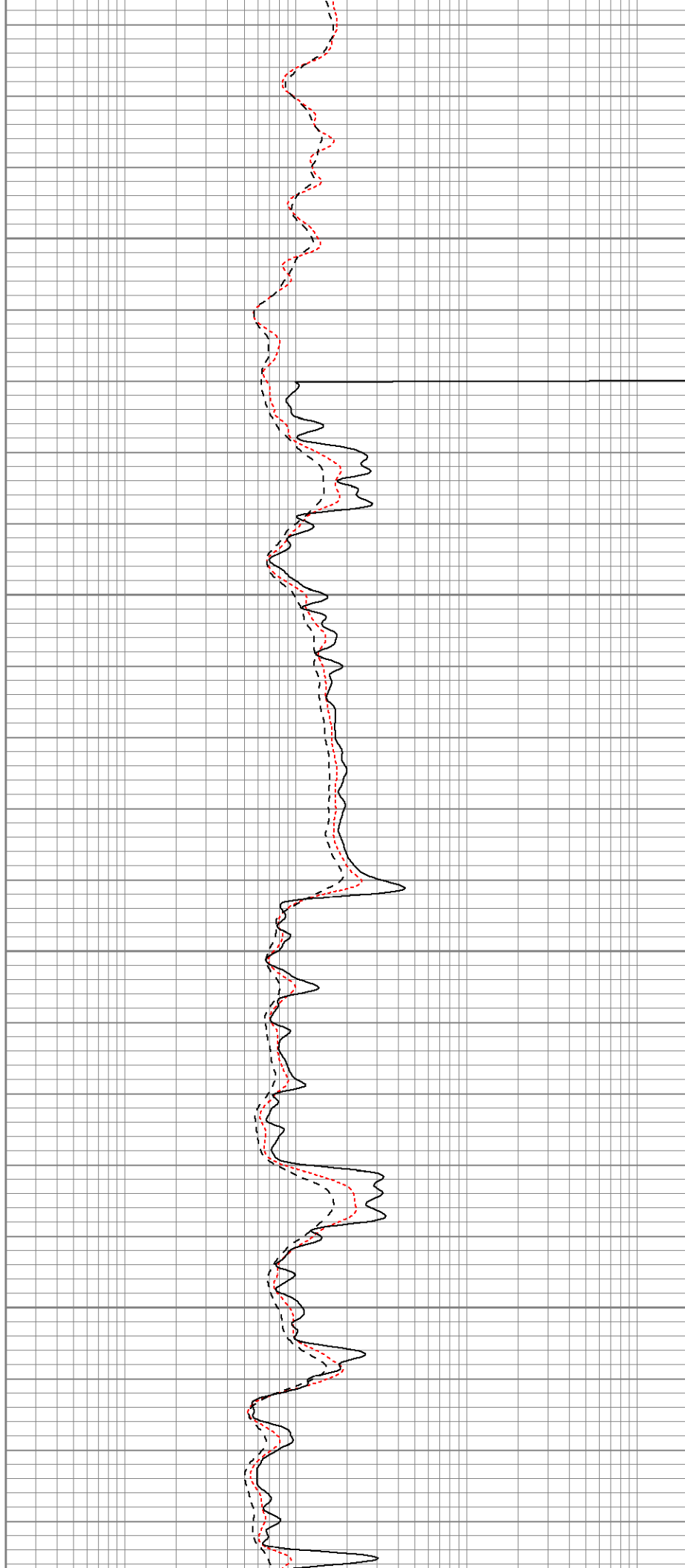
1350

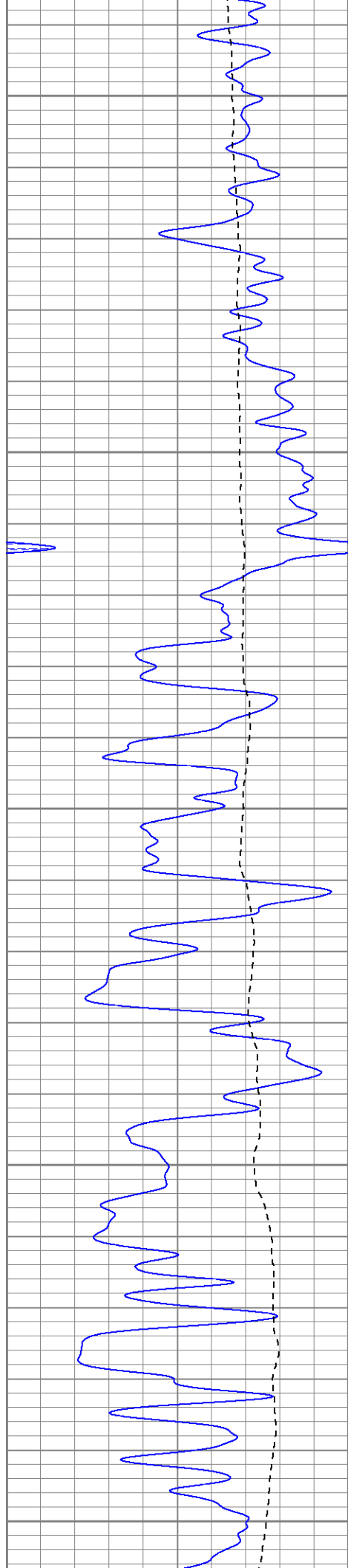
Fluid Level

1400

1450

1500





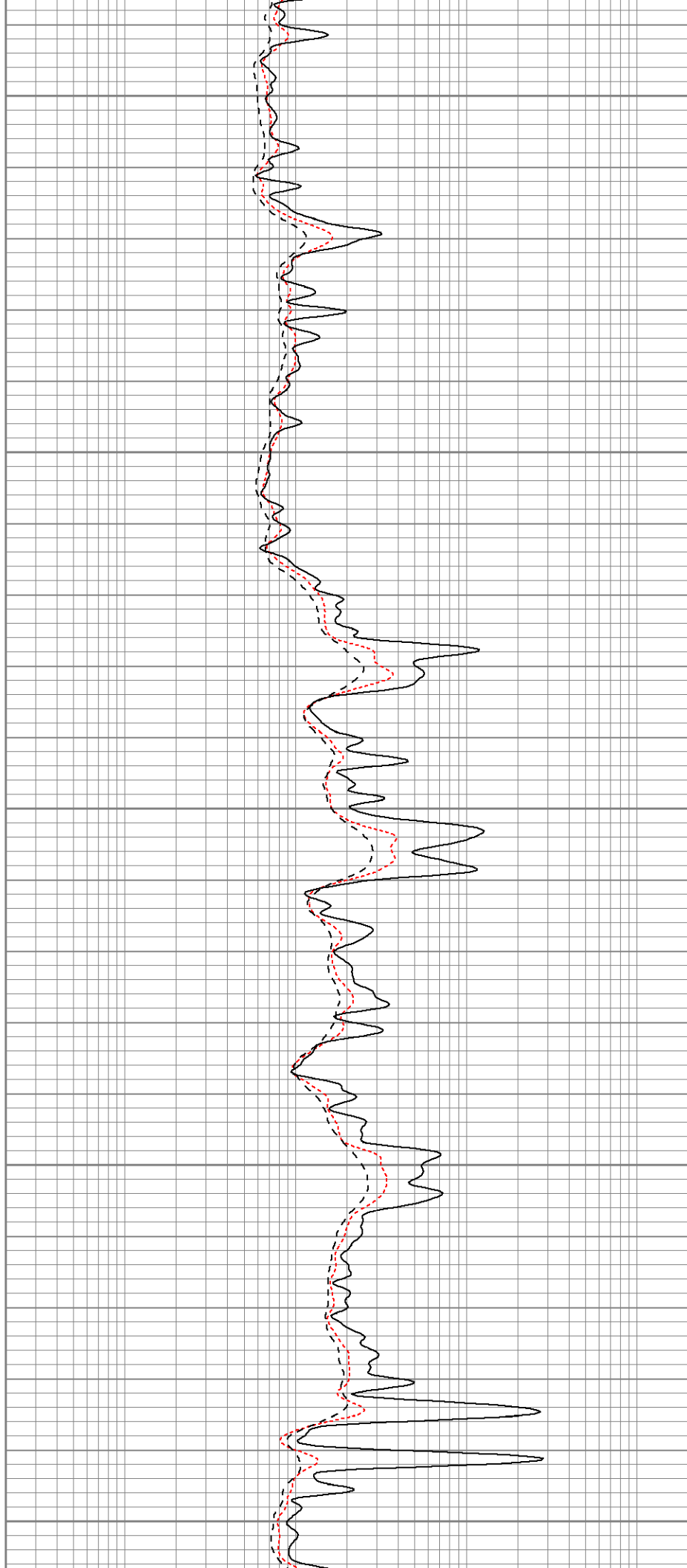
1550

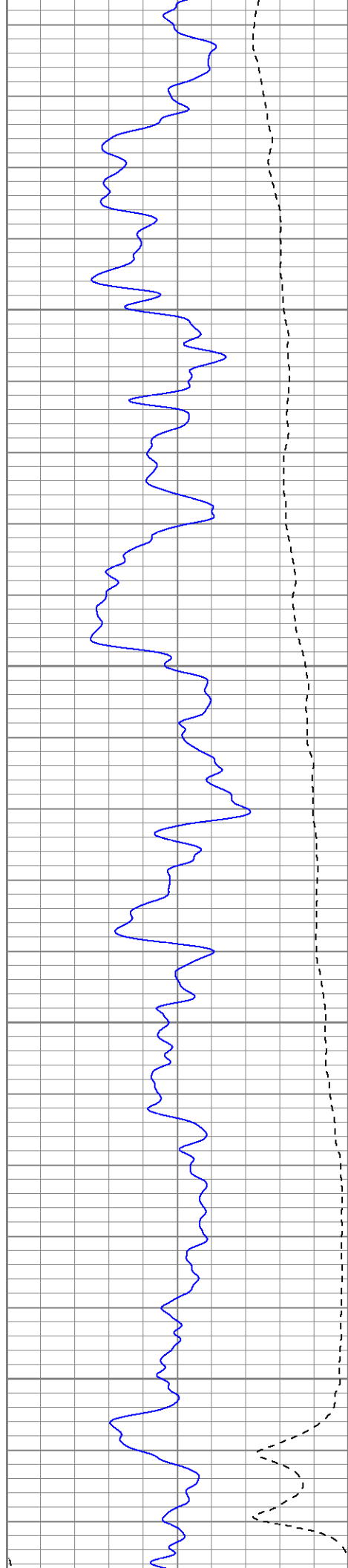
1600

1650

1700

1750



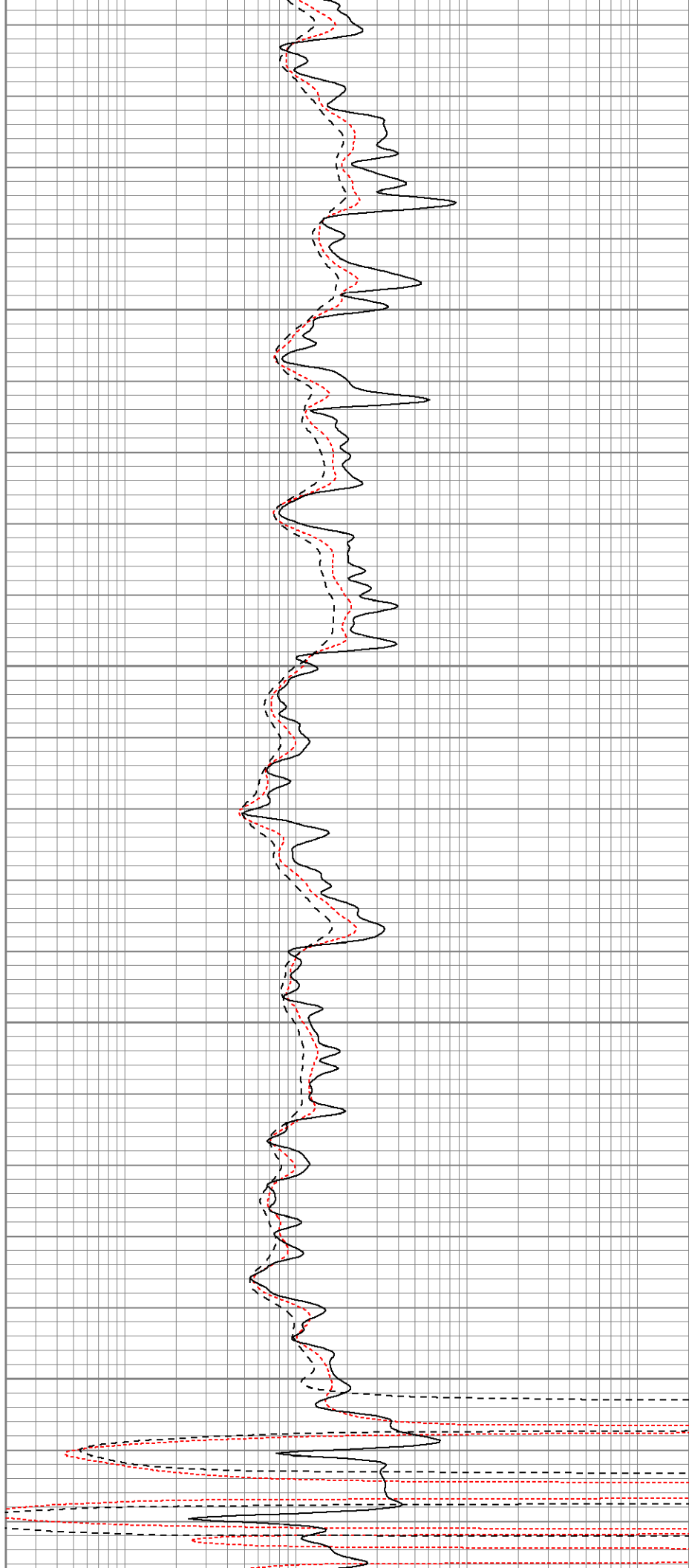


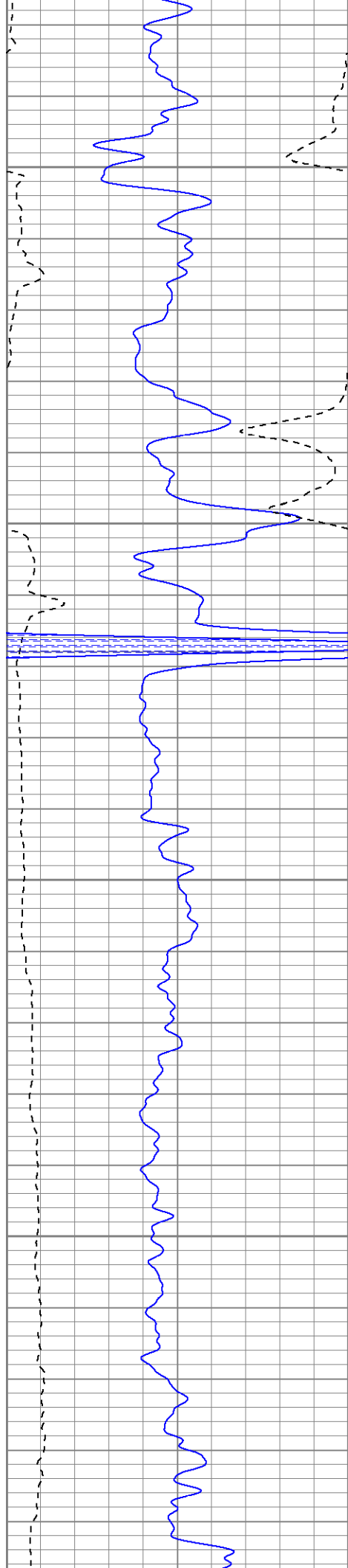
1800

1850

1900

1950



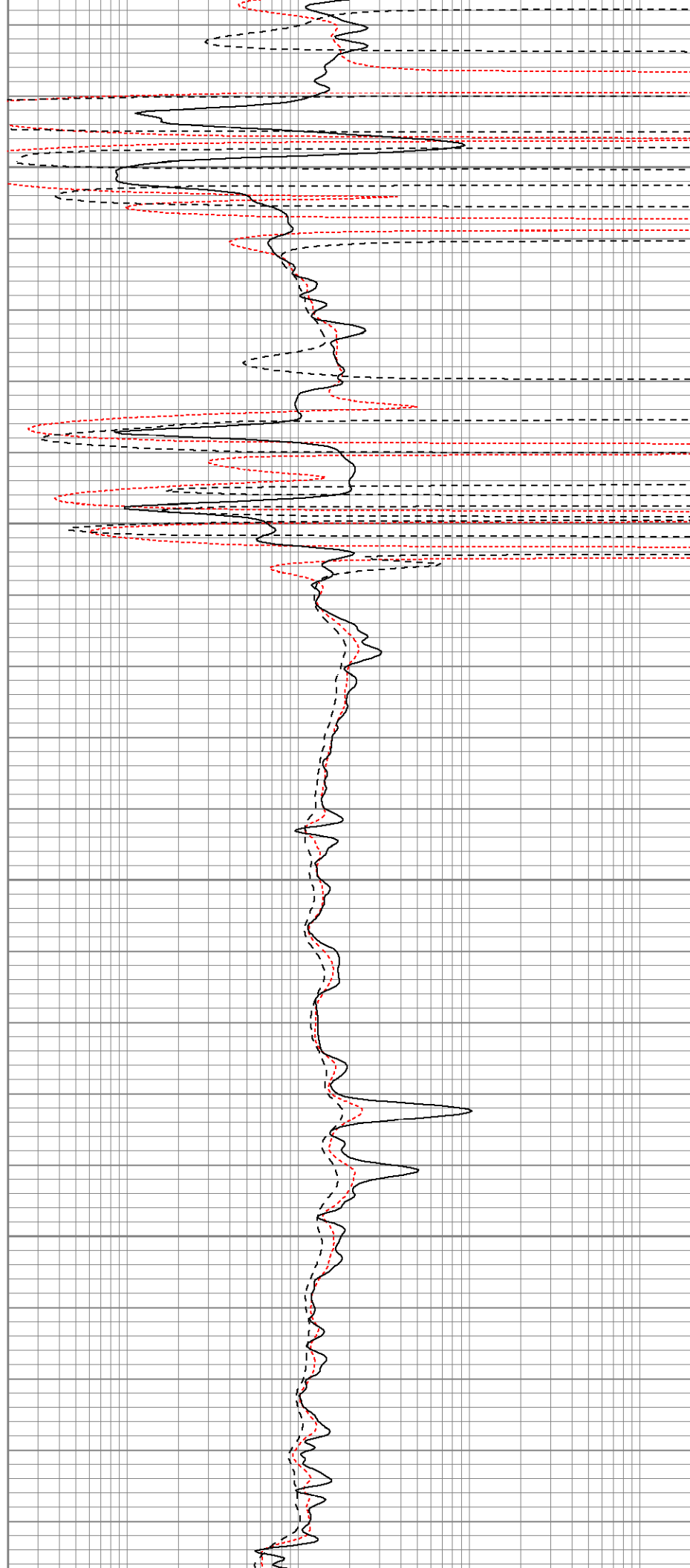


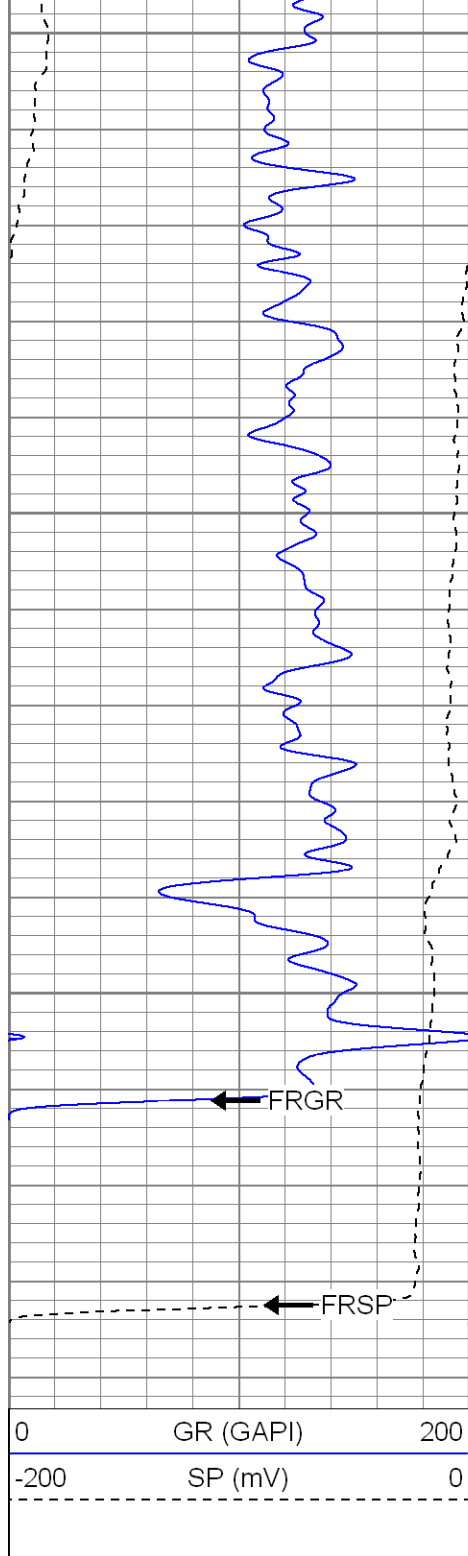
2000

2050

2100

2150

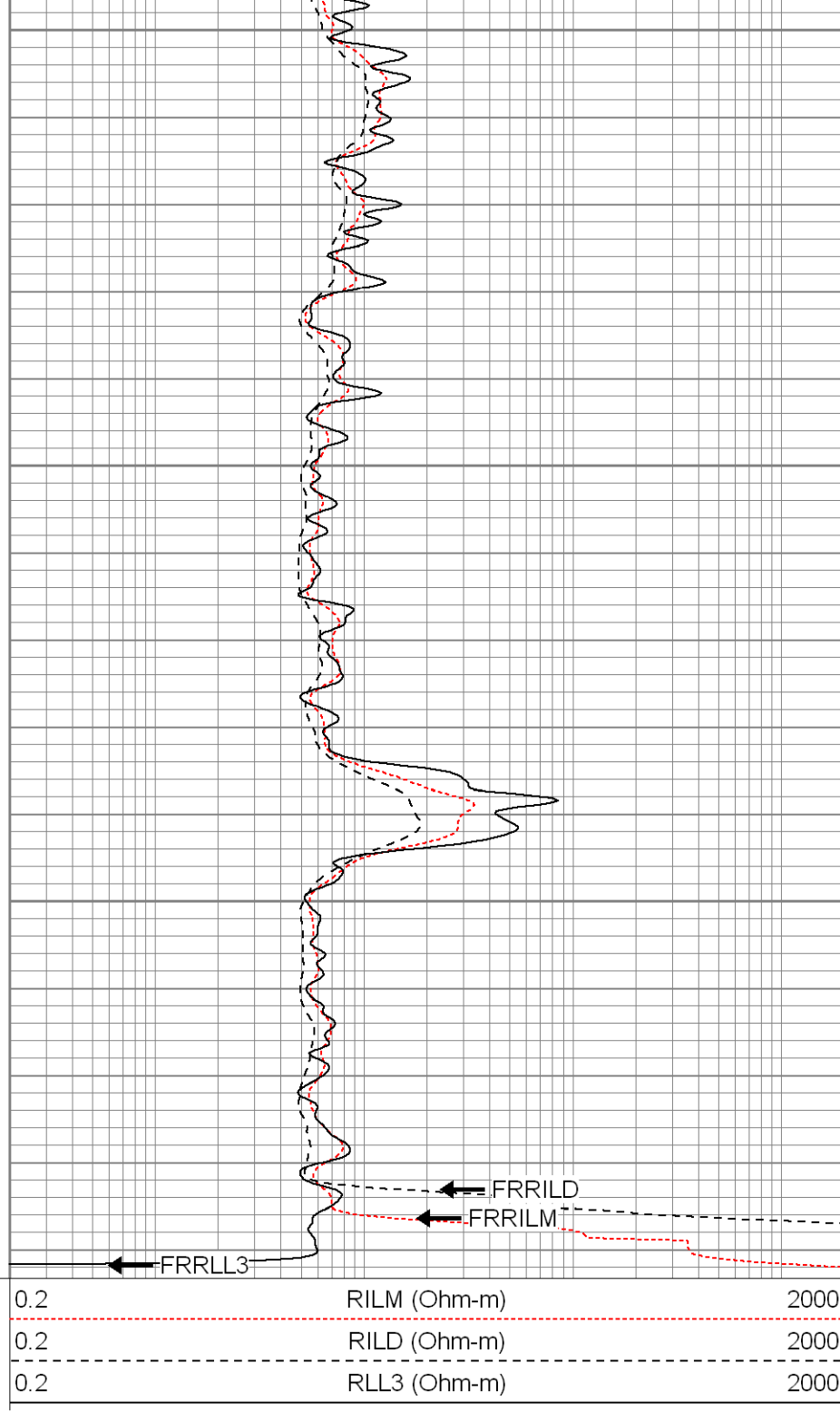




2200

2250

2300

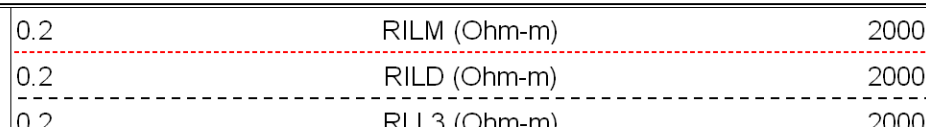
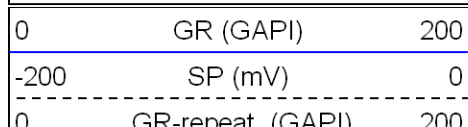


SUPERIOR

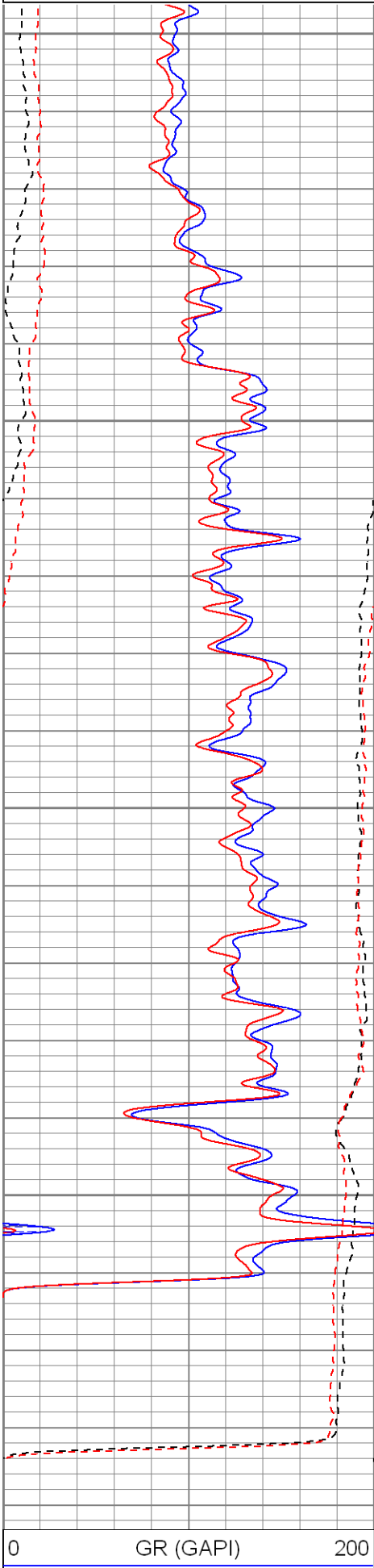
Black Lick, Pa.
Mercer, Pa.
Wooster, Oh.
Cleveland, Ok.
Trinidad, Co.

Repeat Pass

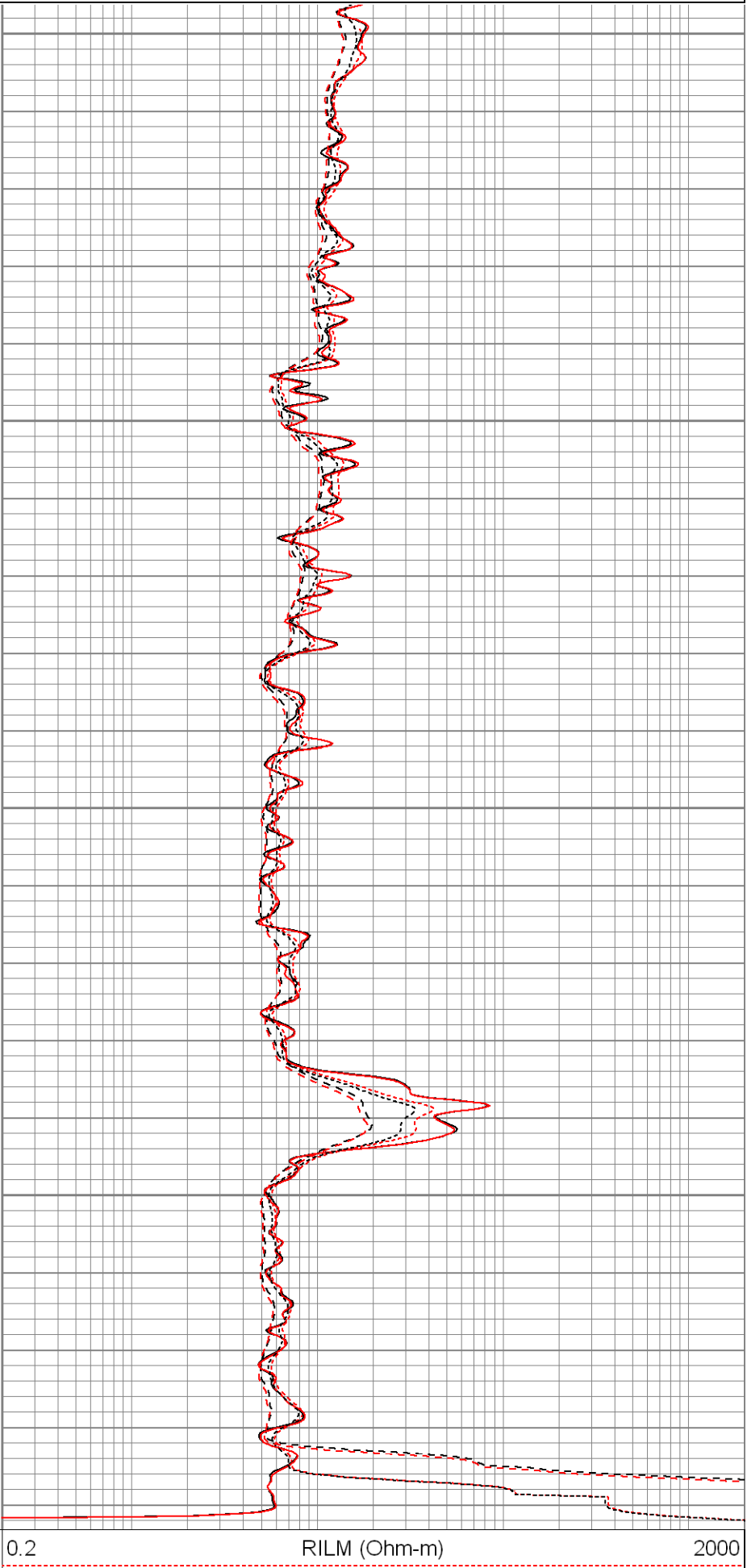
Database File: xtohre2310.db
 Dataset Pathname: pass1.1
 Presentation Format: dil
 Dataset Creation: Sat Apr 12 09:10:12 2008 by Calc Open-Cased 070814
 Charted by: Depth in Feet scaled 1:240



| | | |
|------------------|----------------|---|
| GR-repeat (GAPI) | 200 | |
| -200 | SP-repeat (mV) | 0 |



| | |
|---------------------|------|
| RLL3-repeat (Ohm-m) | 2000 |
| RILM-repeat (Ohm-m) | 2000 |
| RILD-repeat (Ohm-m) | 2000 |



| | | | | | |
|------|------------------|-----|-----|---------------------|------|
| -200 | SP (mV) | 0 | 0.2 | RILD (Ohm-m) | 2000 |
| 0 | GR-repeat (GAPI) | 200 | 0.2 | RLL3 (Ohm-m) | 2000 |
| -200 | SP-repeat (mV) | 0 | 0.2 | RLL3-repeat (Ohm-m) | 2000 |
| | | | 0.2 | RILM-repeat (Ohm-m) | 2000 |
| | | | 0.2 | RILD-repeat (Ohm-m) | 2000 |

| Calibration Report | |
|--------------------|---|
| Database File: | xtohre2310.db |
| Dataset Pathname: | pass1 |
| Dataset Creation: | Sat Apr 12 08:39:26 2008 by Log Open-Cased 070814 |

| Dual Induction Calibration Report |
|-----------------------------------|
|-----------------------------------|

| | |
|-------------------------|--------------------------|
| Serial-Model: | 5375-G |
| Surface Cal Performed: | Tue Apr 01 11:00:37 2008 |
| Downhole Cal Performed: | Tue Apr 01 11:01:24 2008 |

| Surface Calibration | | | | | | | | |
|---------------------|----------|-------|---|------------|---------|--------|---------|--------|
| Loop: | Readings | | | References | | | Results | |
| | Air | Loop | | Air | Loop | | m | b |
| Deep | 0.001 | 0.620 | V | 0.000 | 500.000 | mmho-m | 807.237 | -0.611 |
| Medium | 0.003 | 0.742 | V | 0.000 | 550.000 | mmho-m | 743.848 | -2.179 |
| Internal: | Zero | Cal | | Zero | Cal | | m | b |
| Deep | 0.001 | 0.620 | V | 0.000 | 500.000 | mmho-m | 807.141 | -0.502 |
| Medium | 0.003 | 0.742 | V | 0.000 | 550.000 | mmho-m | 743.959 | -2.189 |

| Downhole Calibration | | | | | | | | |
|----------------------|----------|---------|--------|------------|---------|--------|---------|--------|
| Internal: | Readings | | | References | | | Results | |
| | Zero | Cal | | Zero | Cal | | m | b |
| Deep | -0.493 | 500.241 | mmho-m | -0.108 | 499.951 | mmho-m | 0.999 | 0.384 |
| Medium | 0.182 | 550.341 | mmho-m | 0.009 | 549.927 | mmho-m | 1.000 | -0.172 |
| Shallow | 2.506 | 0.008 | V | 500.000 | 2.000 | Ohm-m | 124.000 | -3.000 |

| |
|--|
| |
|--|

| Temperature Calibration Report |
|--------------------------------|
|--------------------------------|

| | | | | |
|-----------------|--------------------------|---------|---|--|
| Serial Number: | 2542T | | | |
| Tool Model: | CDLP | | | |
| Performed: | Wed Apr 09 15:14:20 2008 | | | |
| | Reference | Reading | | |
| Low Reference: | 55.00 degF | 3.11 | V | |
| High Reference: | 160.00 degF | 5.35 | V | |
| Gain: | 46.88 | | | |
| Offset: | -90.78 | | | |
| Delta Spacing | 1 | | | |

| Compensated Density Calibration Report |
|--|
|--|

| | |
|-------------------------------|--------------------------|
| Serial-Model: | 2542-T2 |
| Source / Verifier: | / |
| Master Calibration Performed: | Fri Apr 04 08:43:29 2008 |

| Master Calibration |
|--------------------|
|--------------------|



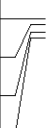
| | Density | | | Far Detector | Near Detector | |
|---------------------|---------|------|-----------------------------|--------------|---------------|-----|
| Magnesium | 1.710 | g/cc | | 725.64 | 339.44 | cps |
| Aluminum | 2.590 | g/cc | | 162.65 | 232.88 | cps |
| Spine Angle = 75.86 | | | Density/Spine Ratio = 0.571 | | | |
| | Size | | | Reading | | |
| Small Ring | 8.00 | in | | 1.33 | V | |
| Large Ring | 14.00 | in | | 2.67 | V | |

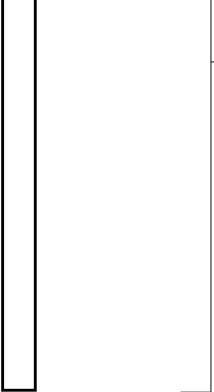
| |
|------------------------------|
| Gamma Ray Calibration Report |
|------------------------------|

| | | | |
|---------------------|--------------------------|----------|--|
| Serial Number: | 2001 | | |
| Tool Model: | OH | | |
| Performed: | Fri Apr 04 09:53:13 2008 | | |
| Calibrator Value: | 1.0 | GAPI | |
| Background Reading: | 0.0 | cps | |
| Calibrator Reading: | 1.0 | cps | |
| Sensitivity: | 0.2500 | GAPI/cps | |

| |
|----------------------------|
| Neutron Calibration Report |
|----------------------------|

| | | | |
|---------------------|--------------------------|----------|--|
| Serial Number: | 5108 | | |
| Tool Model: | PROBE | | |
| Performed: | Wed Apr 09 15:10:14 2008 | | |
| Calibrator Value: | 1 | NAPI | |
| Calibrator Reading: | 1 | cps | |
| Sensitivity: | 1 | NAPI/cps | |

| Sensor | Offset (ft) | Schematic | Description | Len (ft) | OD (in) | Wt (lb) |
|----------------------------|-------------|---|---|----------|---------|---------|
| NEU | 37.47 |  | None | 0.75 | 1.50 | 5.00 |
| | | | NEU-PROBE (5108) Probe Epithermal | 4.92 | 3.63 | 85.00 |
| GR | 31.94 |  | GR-OH (2001) 2001 | 3.56 | 3.25 | 40.00 |
| LSD DCAL SSD TEMP | 23.19 |  | CDL-T2 (2542) Gearhart | 9.29 | 4.00 | 201.00 |
| | 22.98 | | TEMP-CDLP (2542T) Probe Density/Temp | 0.01 | 10.00 | 1.00 |
| | 22.73 | | | | | |
| | 22.55 | | | | | |

| | | | | | | |
|---|-------|---|--------------------------|-------|------|--------|
| CILD | 10.60 |  | DIL-G (5375) Gearhart | 21.47 | 4.00 | 345.00 |
| SP | 10.60 | | | | | |
| CILM | 6.89 | | | | | |
| RLL3 | 1.70 | | | | | |
| Dataset: xtohre2310.db: field/well/run1/pass1 Total Length: 40.00 ft Total Weight: 677.00 lb O.D. 10.00 in | | | | | | |