



SUPERIOR
WELL SERVICES
Black Lick, Pa.
Mercer, Pa.
Wooster, Oh.
Cleveland, Ok.
Trinidad, Co.

**CEMENT BOND
GAMMA RAY
LOG
(1000 PSI)**

Company XTO Energy Inc.
Well Hill Ranch East 23-09
Field Purgatorie River
County Las Animas
State CO

Company XTO Energy Inc.
Well Hill Ranch East 23-09
Field Purgatorie River
County Las Animas State CO

Location: API #: 05 071 09449 00
2178' FSL & 867' FEL

SEC 23 TWP 34S RGE 67W

Permanent Datum	Ground Level	Elevation	7734'
Log Measured From	Ground Level		
Drilling Measured From	Ground Level		

Other Services
Pressure
Control/
temp.
Elevation
K.B. -----
D.F. -----
G.L. 7734'

Date	4-11-08					
Run Number	One					
Depth Driller	2305'					
Depth Logger	2172'					
Bottom Logged Interval	2171'					
Top Log Interval	Surface					
Open Hole Size	7 7/8"					
Type Fluid	Water					
Density / Viscosity	///					
Max. Recorded Temp.	130F					
Estimated Cement Top	690'					
Time Well Ready	Portable Mast					
Time Logger on Bottom	3:00PM					
Equipment Number	T0698					
Location	Trinidad					
Recorded By	J Sisneros					
Witnessed By	Mr. Ryan Rensink					
Borehole Record					Tubing Record	
Run Number	Bit	From	To	Size	Weight	From To
Casing Record	Size		Wgt/Ft		Top	Bottom
Surface String	8 5/8"				00	488'
Prot. String						
Production String	5 1/2"				00	N/A
Liner						

<<< Fold Here >>>

All interpretations are opinions based on inferences from electrical or other measurements and we cannot and do not guarantee the accuracy or correctness of any interpretation, and we shall not, except in the case of gross or willful negligence on our part, be liable or responsible for any loss, costs, damages, or expenses incurred or sustained by anyone resulting from any interpretation made by any of our officers, agents or employees. These interpretations are also subject to our general terms and conditions set out in our current Price Schedule.

Comments

Lorencito, follow main road past compressor 2.2 miles, take right (right just before XTO hill), @ Y stay right up hill, drive thru lorencito 14-19 location, @ Top of hill take hard left, drive thru Lorencito 9-24 location, take third left, drive thru a Lorencito location, take next left, drive thru Hill Ranch East 23-07 stay left, dead end on location.



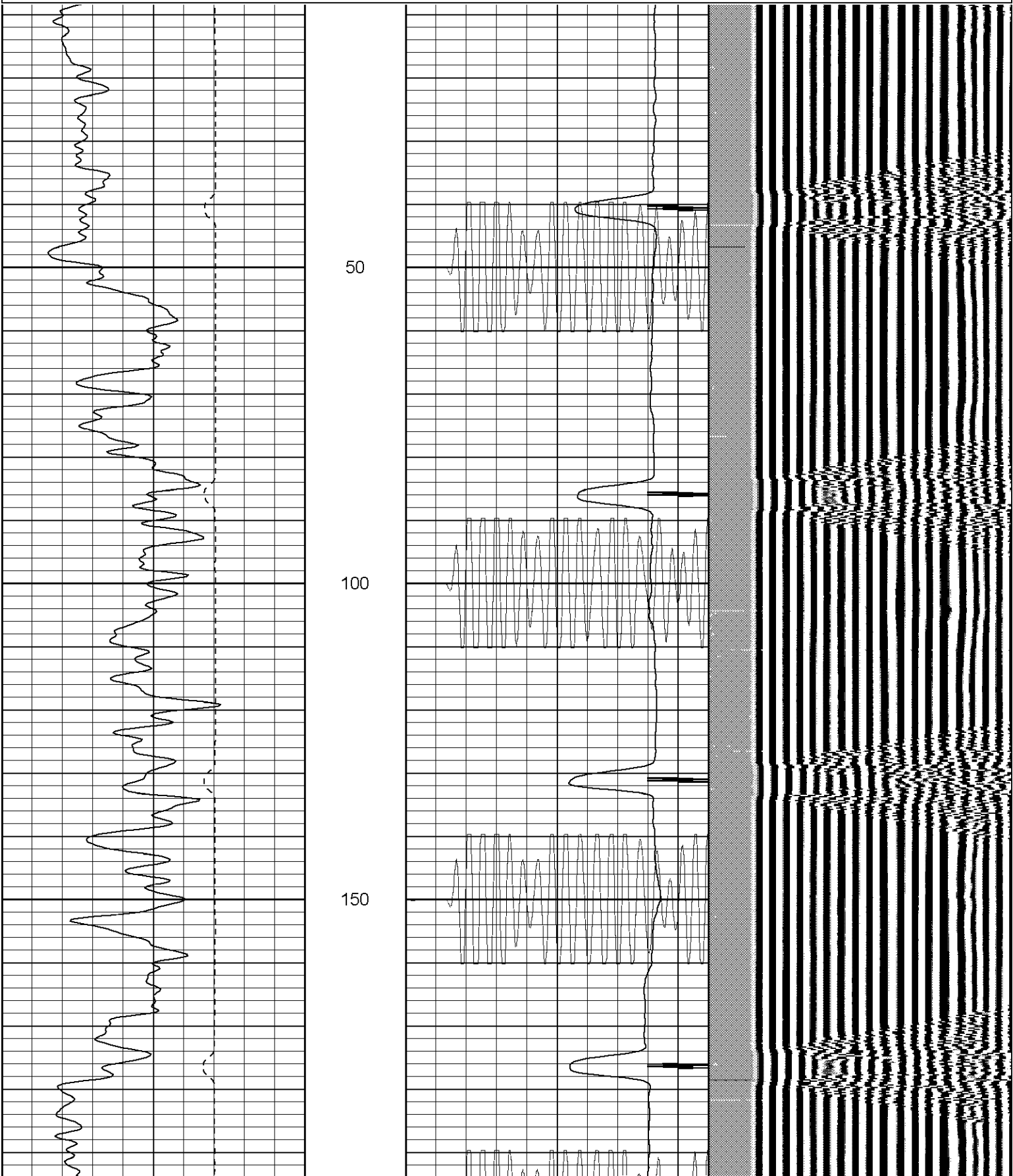
SUPERIOR

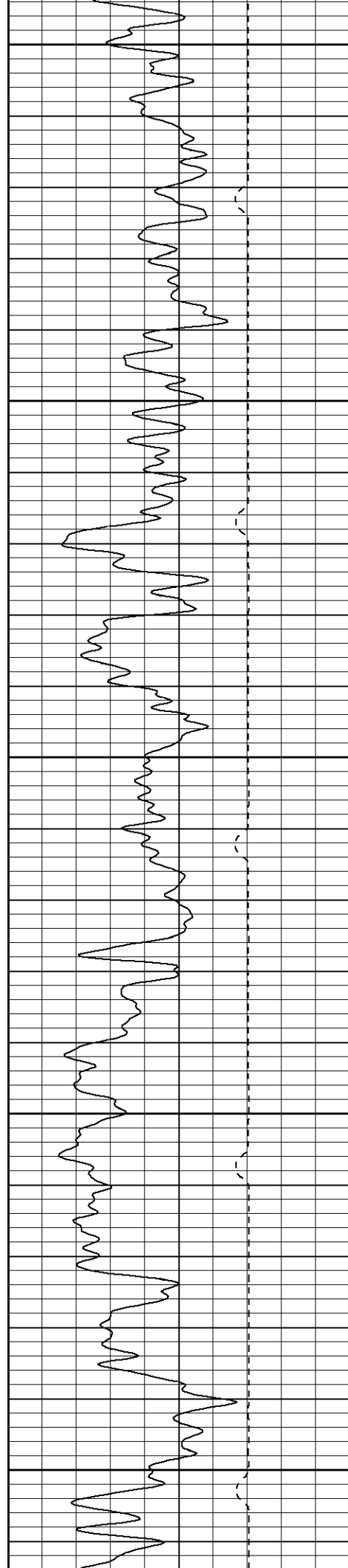
Black Lick, Pa.
Mercer, Pa.
Wooster, Oh.
Cleveland, Ok.
Trinidad, Co.

Main Pass (1000PSI)

Database File: hreast2309041108b.db
Dataset Pathname: pass2
Presentation Format: cblrt
Dataset Creation: Thu Apr 10 15:06:41 2008 by Log Open-Cased 070814
Charted by: Depth in Feet scaled 1:240

0	GR (GAPI)	200	0	AMP3 (mV)	100	200	Variable Density	1200
400	TT3 (usec)	200	18	CCL	-2			
			200	CBL5	1200			





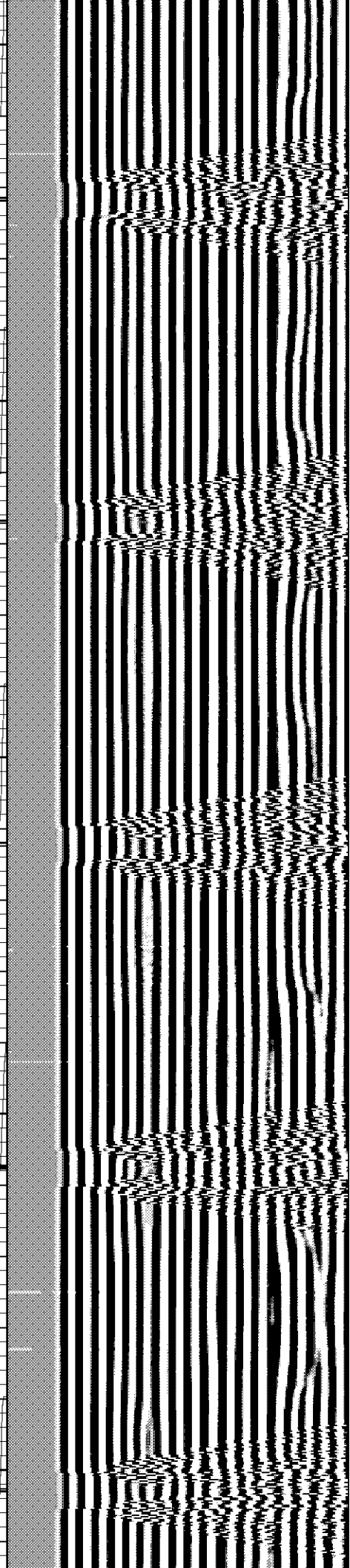
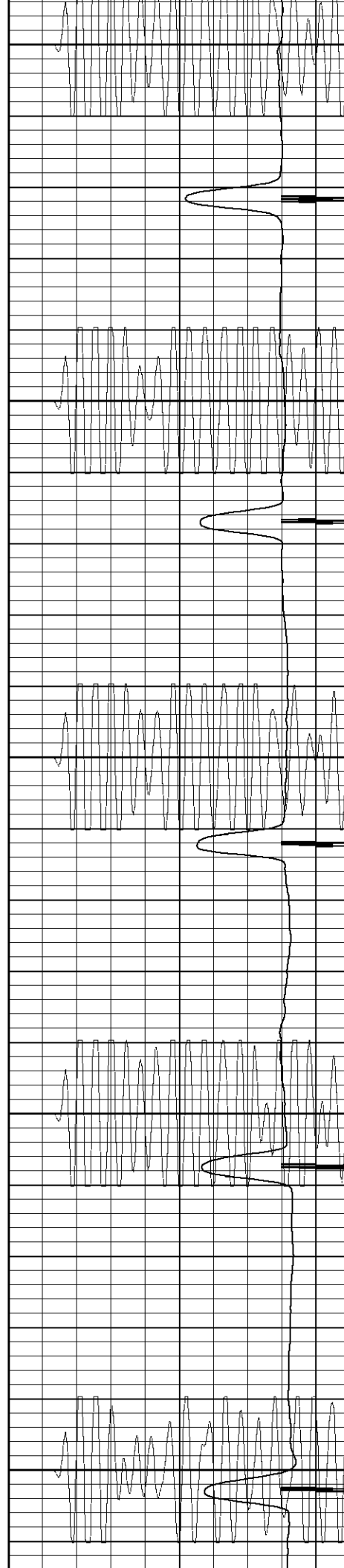
200

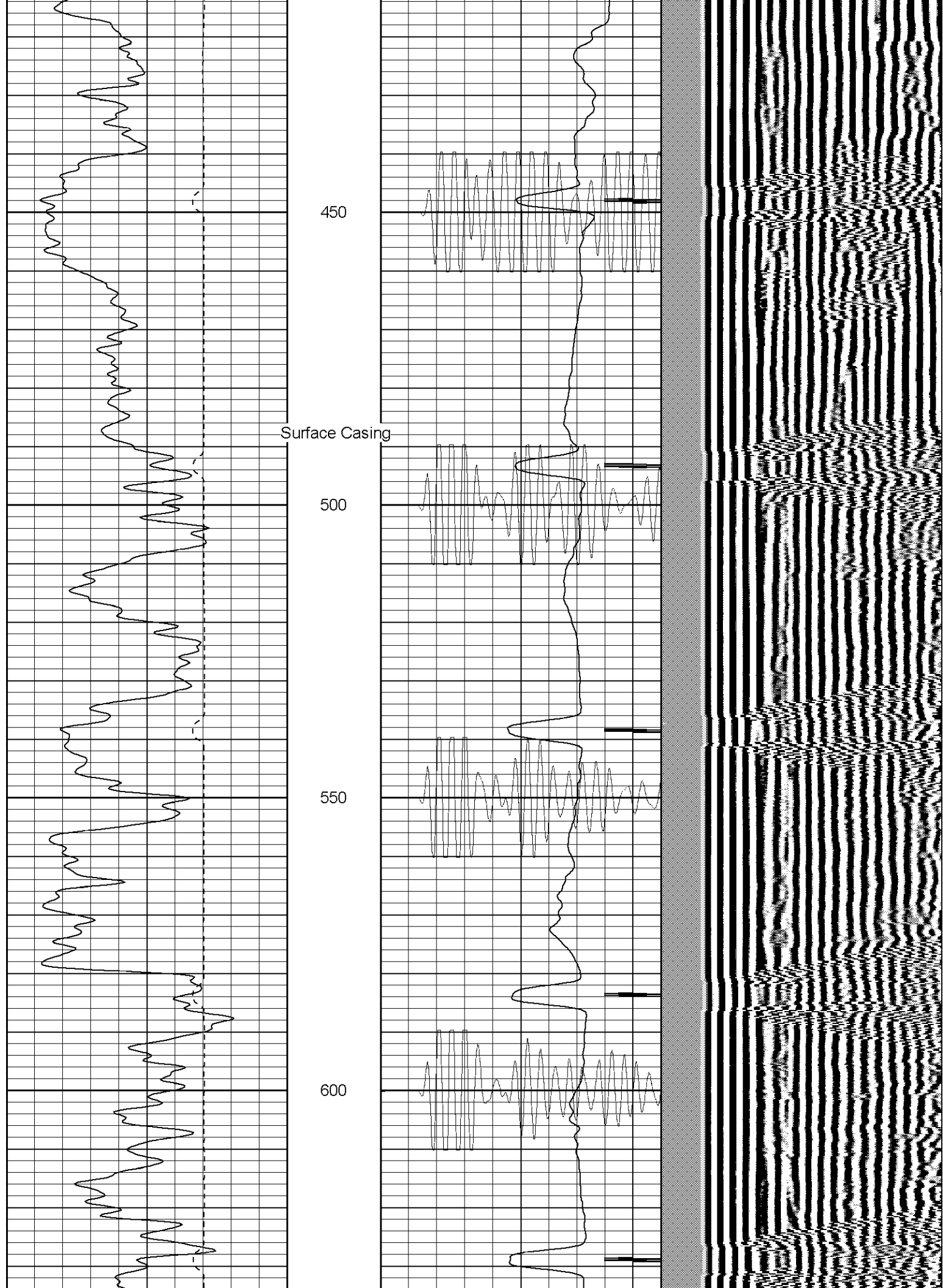
250

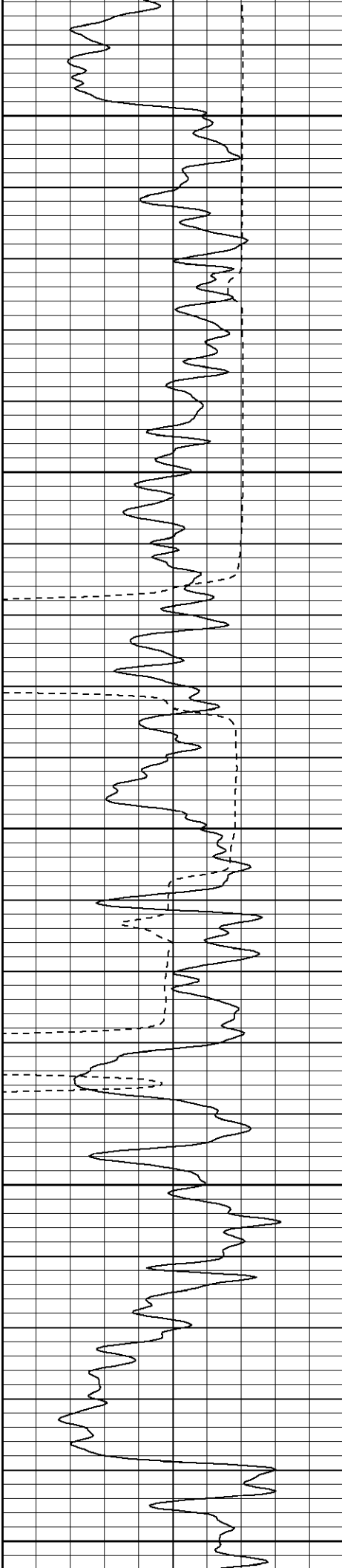
300

350

400







650

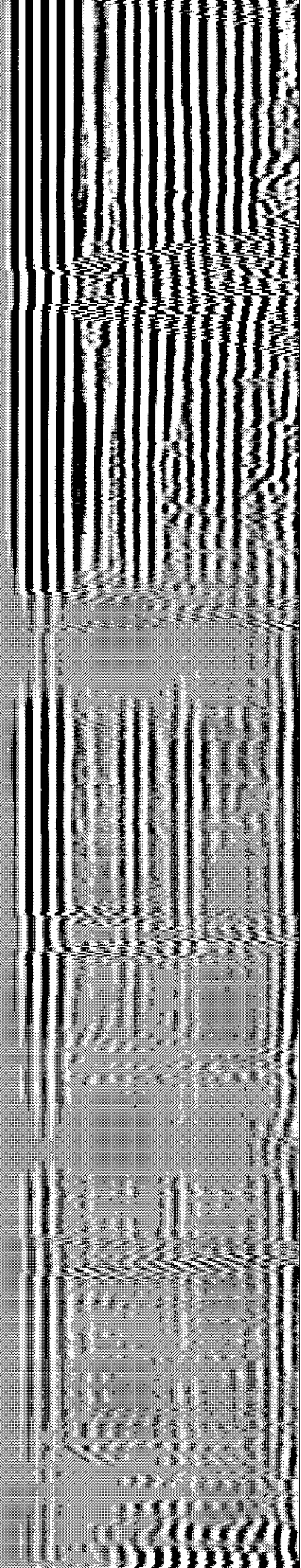
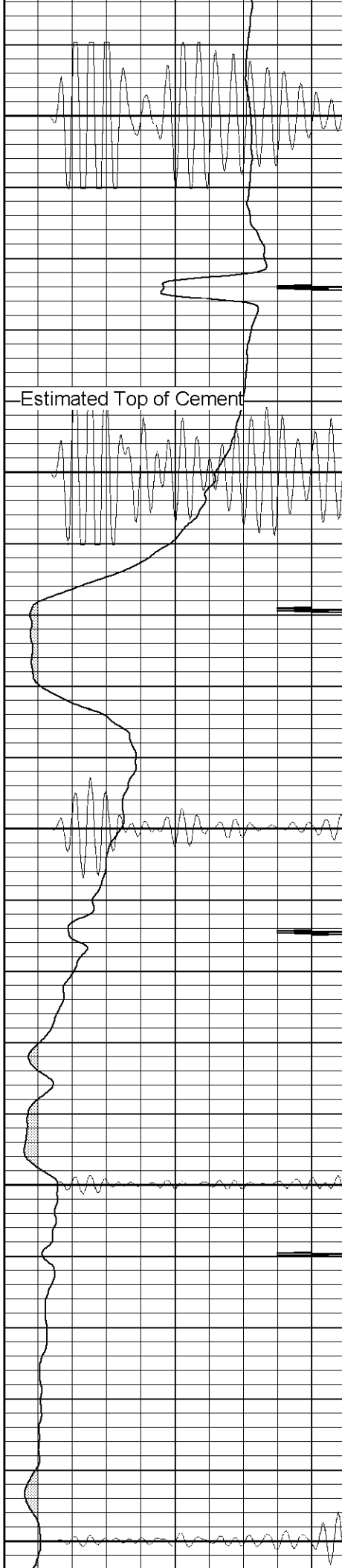
700

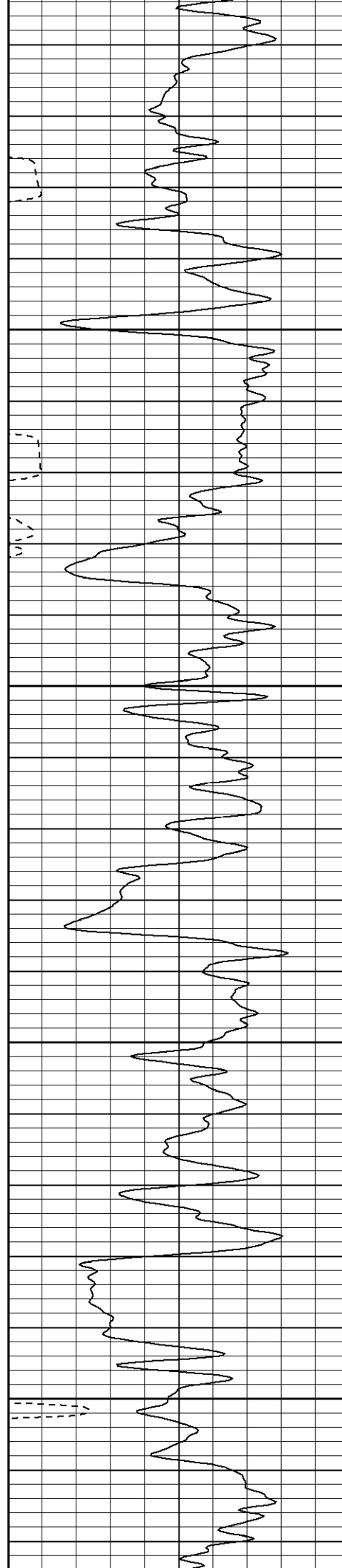
750

800

850

Estimated Top of Cement



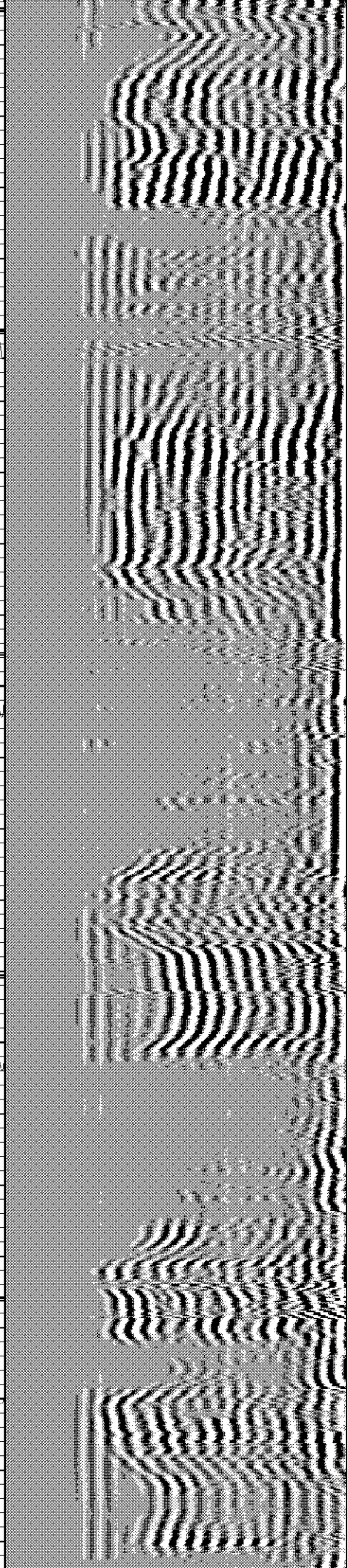
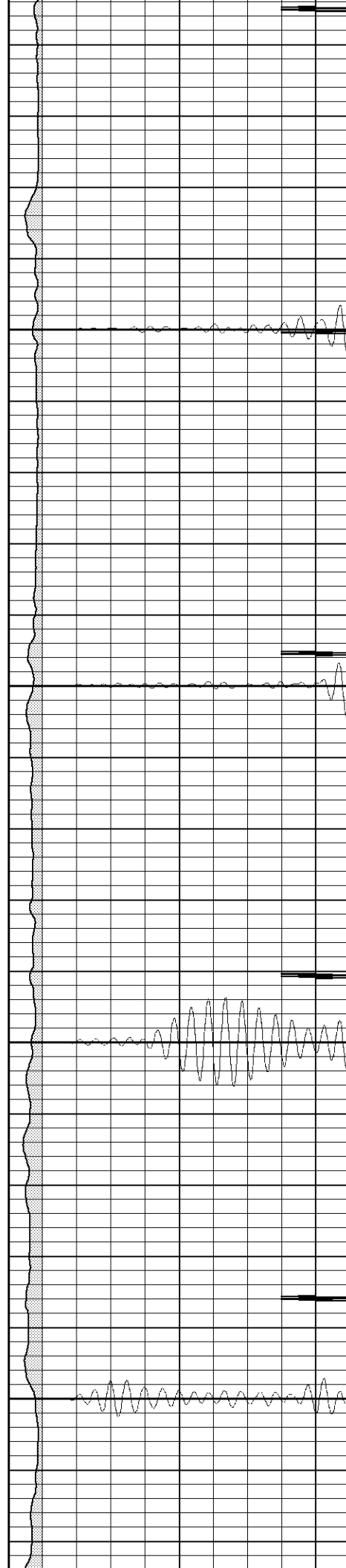


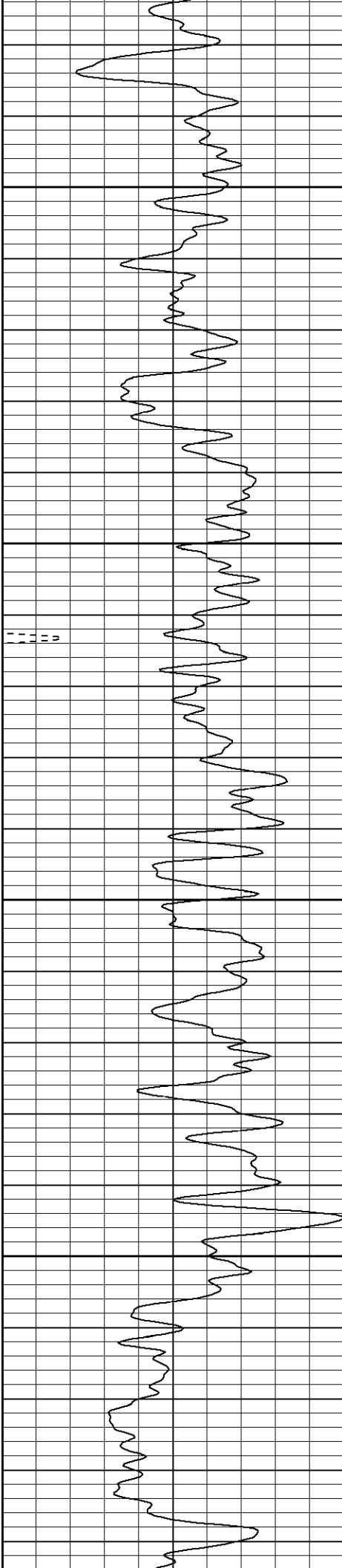
900

950

1000

1050



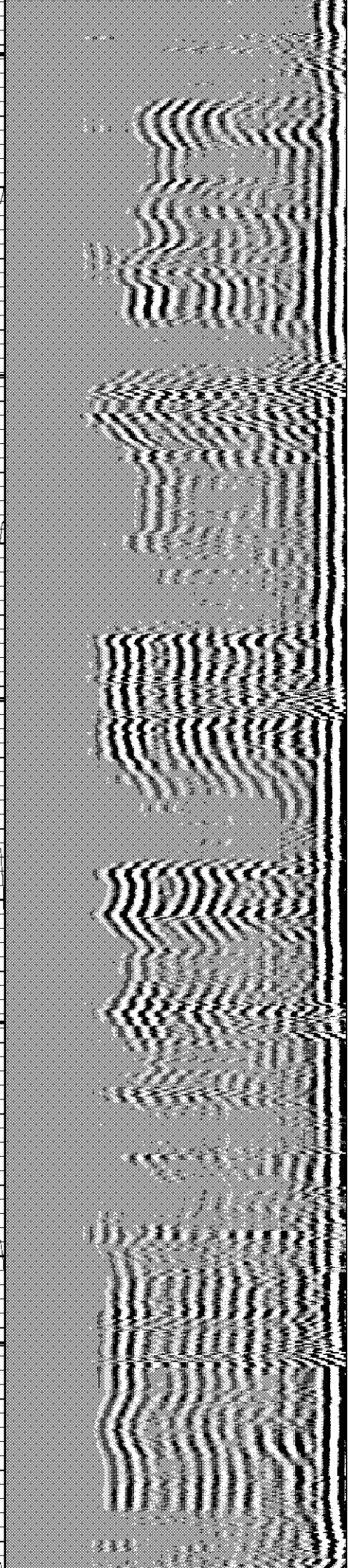
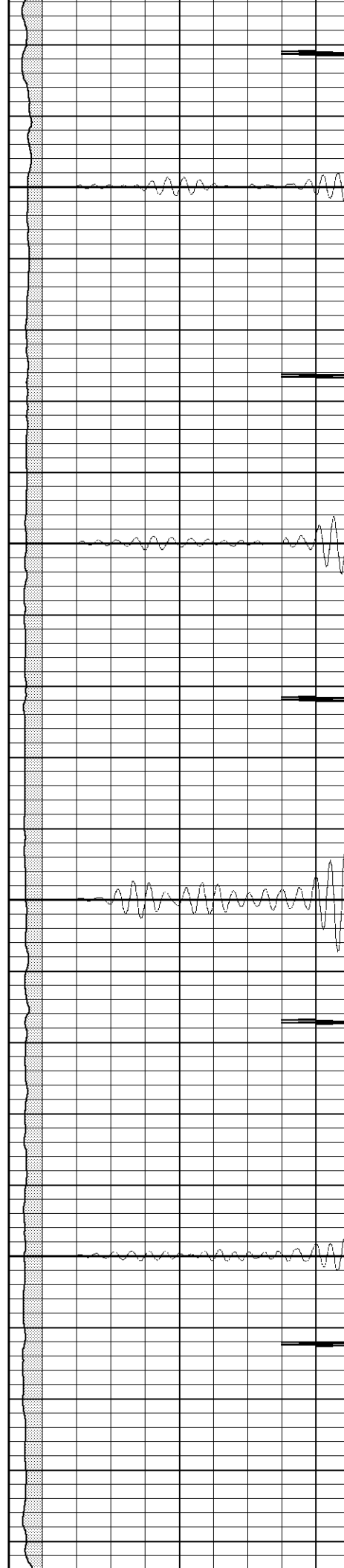


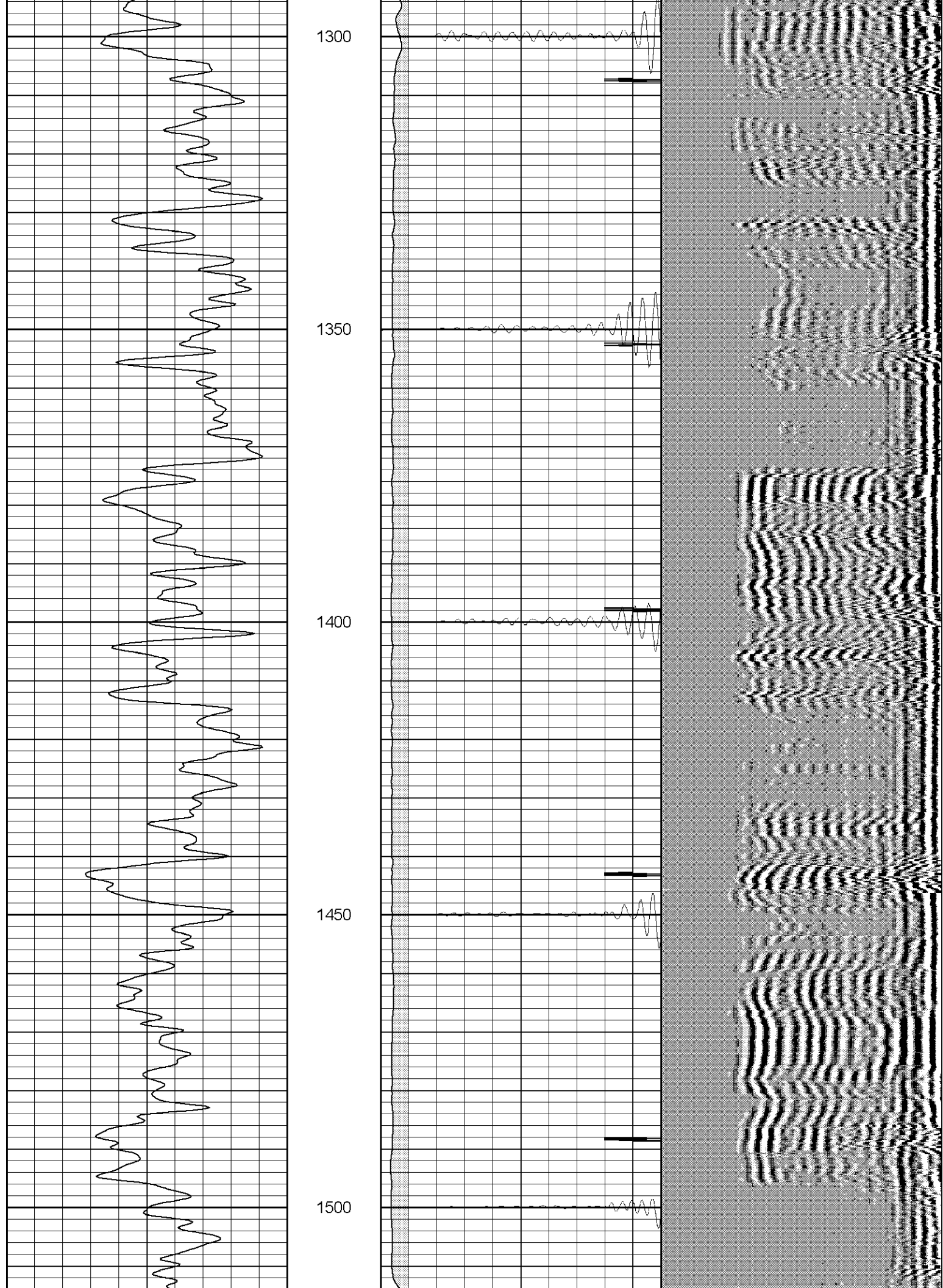
1100

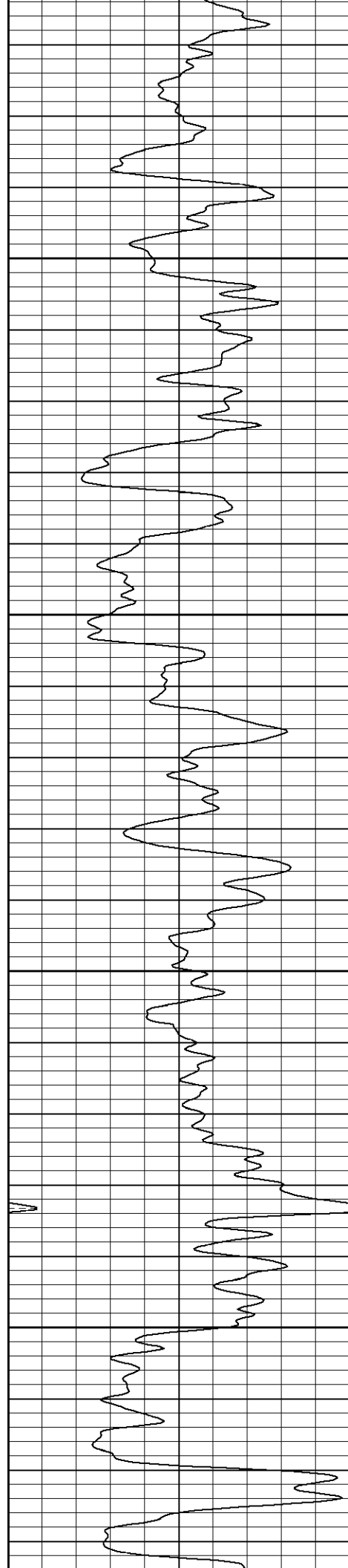
1150

1200

1250





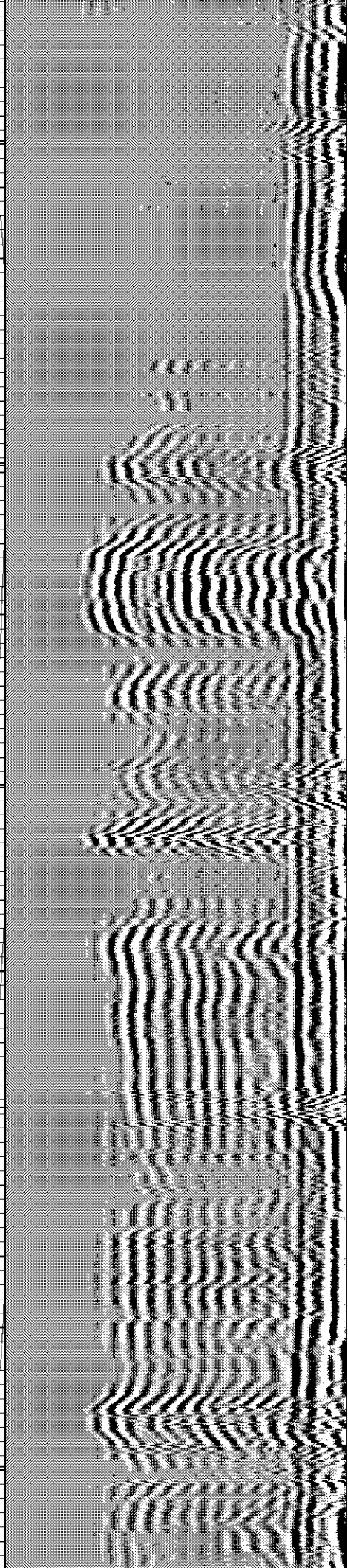
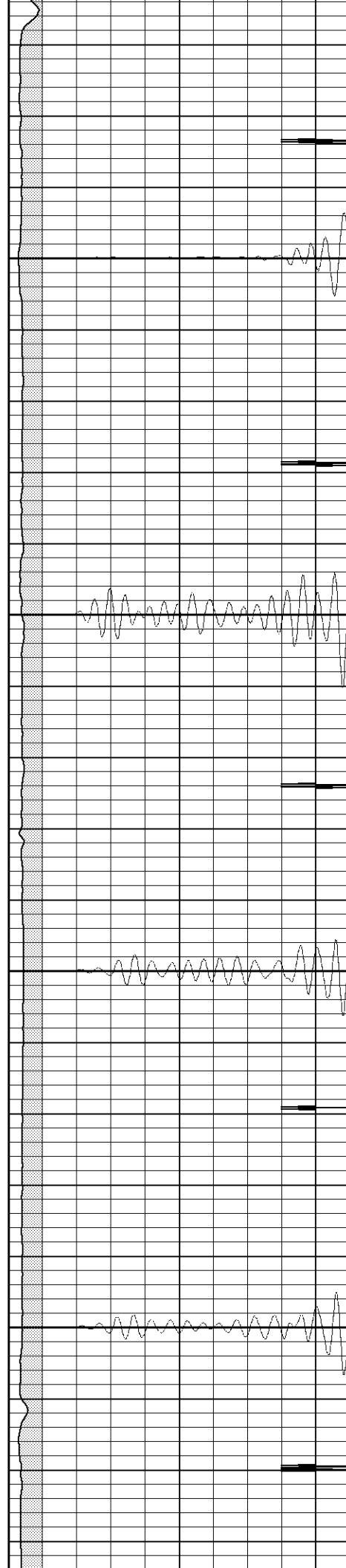


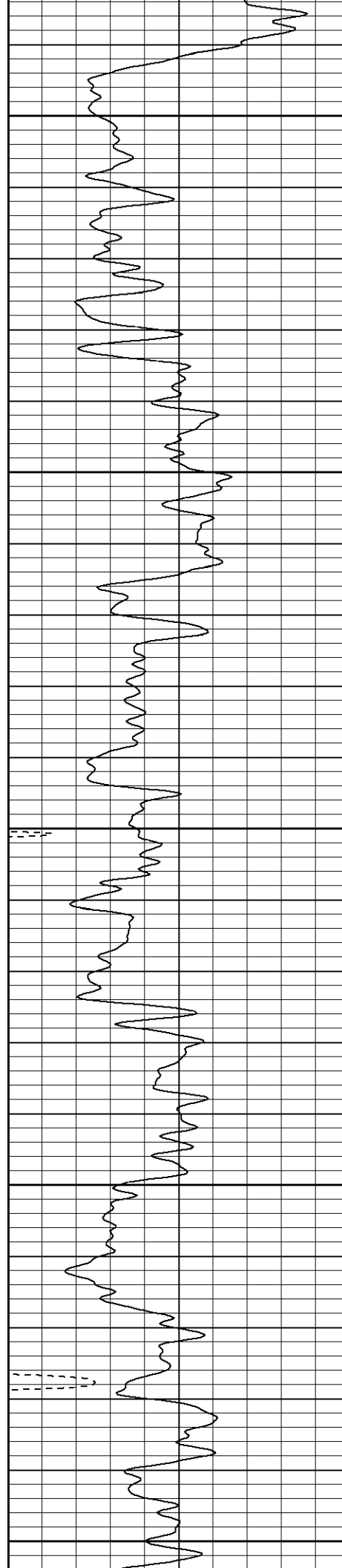
1550

1600

1650

1700





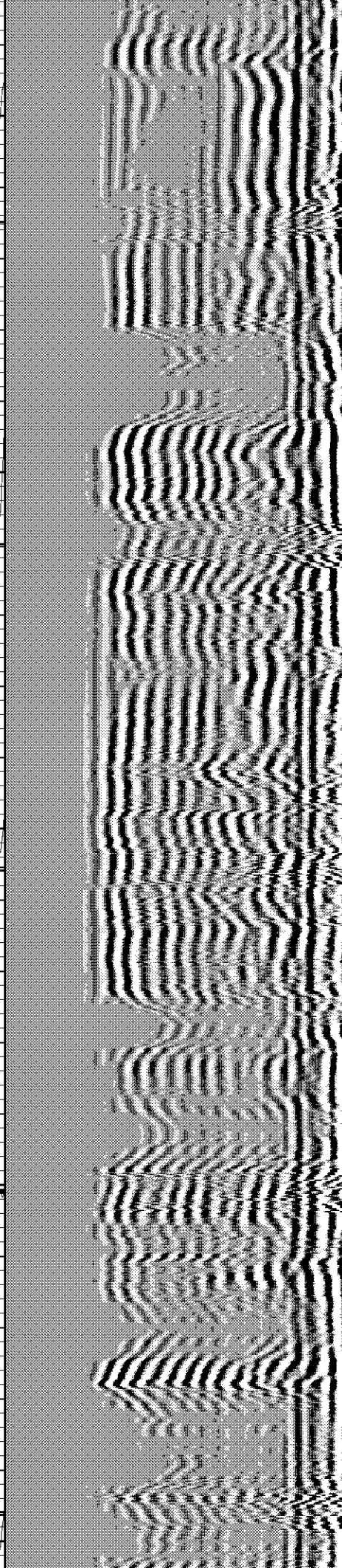
1750

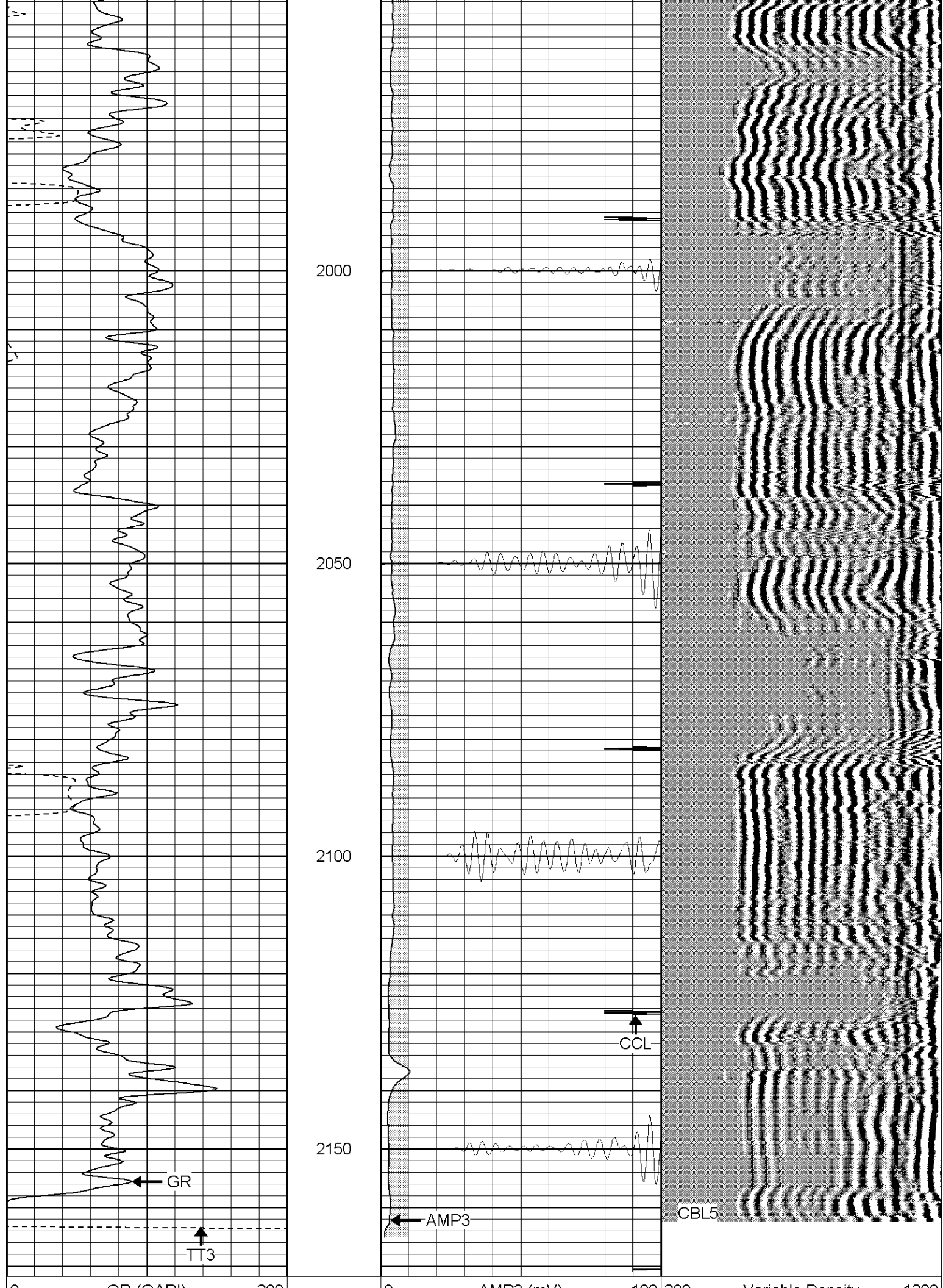
1800

1850

1900

1950





0	GR (GAPI)	200
400	TT3 (usec)	200
<hr/>		

0	AMP3 (mV)	100
18	CCL	-2
200	CBL5	1200

Variable Density 1200



SUPERIOR

Black Lick, Pa.
Mercer, Pa.
Wooster, Oh.
Cleveland, Ok.
Trinidad, Co.

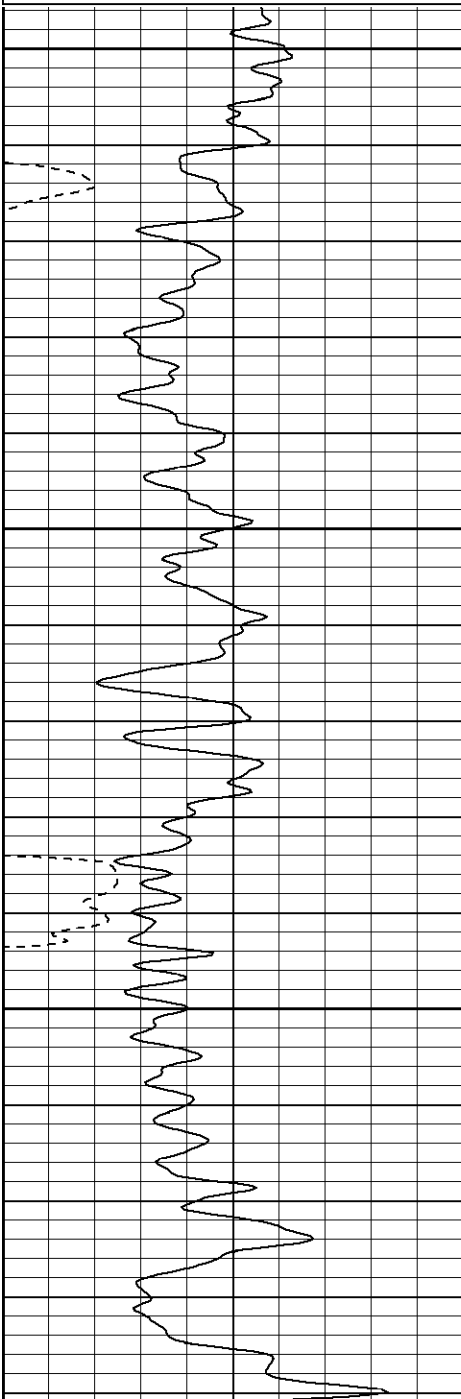
Repeat Section (0PSI)

Database File: hreast2309041108b.db
Dataset Pathname: pass1
Presentation Format: cblrt
Dataset Creation: Thu Apr 10 15:01:41 2008 by Log Open-Cased 070814
Charted by: Depth in Feet scaled 1:240

0	GR (GAPI)	200
400	TT3 (usec)	200
<hr/>		

0	AMP3 (mV)	100
18	CCL	-2
200	CBL5	1200

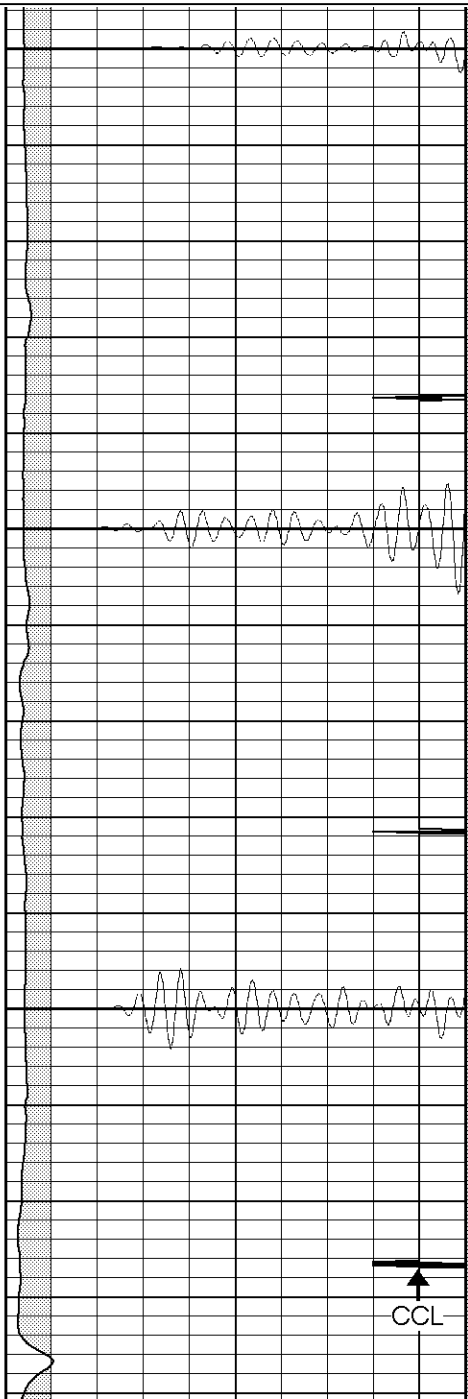
200 Variable Density 1200



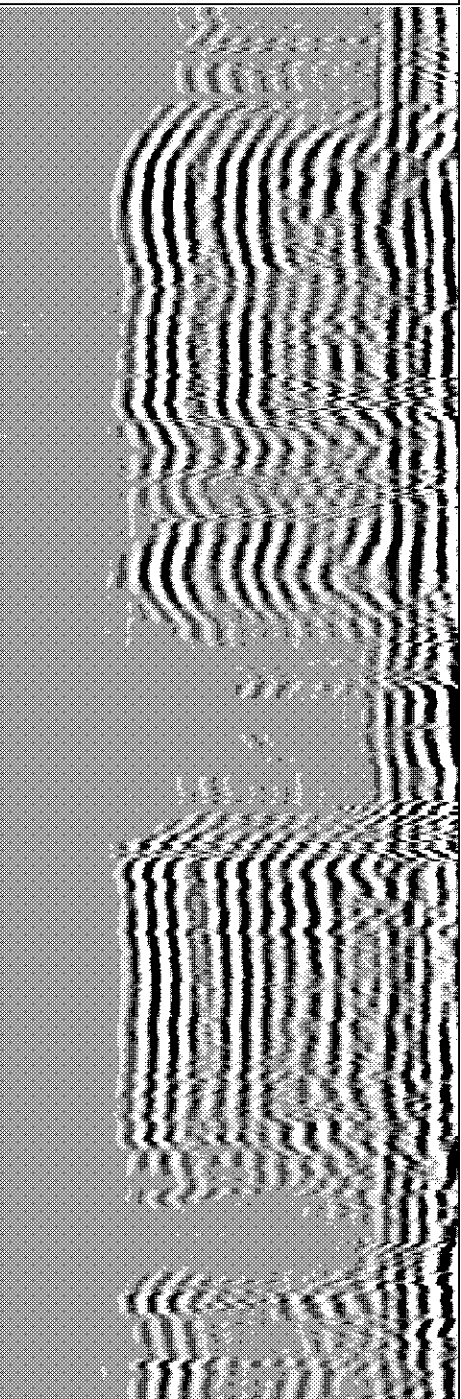
2000

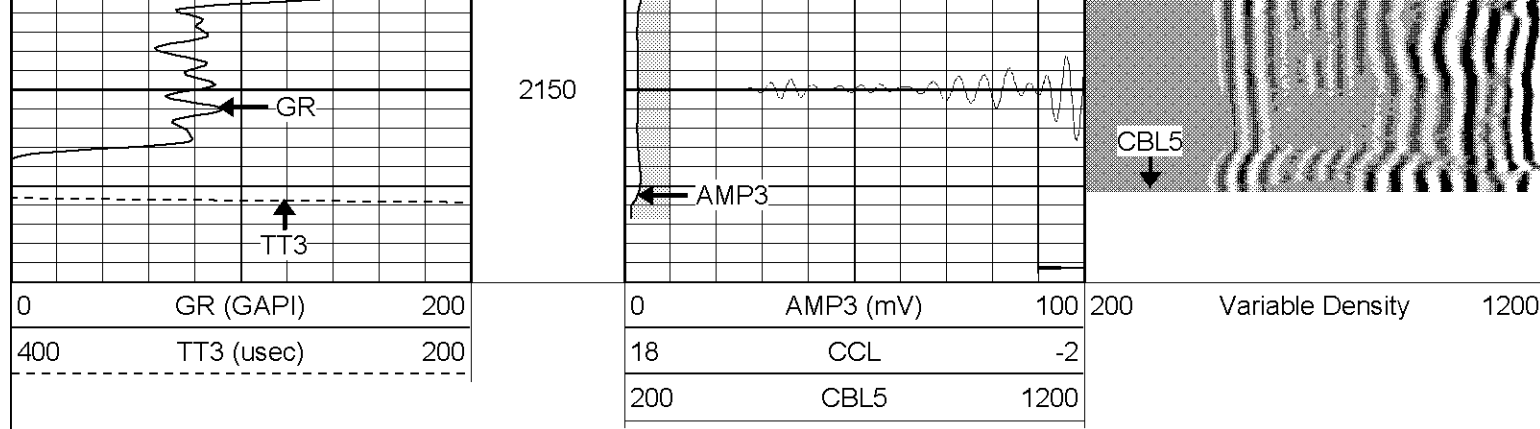
2050

2100



CCL





Calibration Report

Database File: hreast2309041108b.db
 Dataset Pathname: pass1
 Dataset Creation: Thu Apr 10 15:01:41 2008 by Log Open-Cased 070814

Cement Bond Log Calibration Report

Serial Number: Titan6
 Tool Model: T6
 Performed: Wed Apr 09 10:50:38 2008

Depth: 1272.56 ft
 Casing Diameter: 5.5 in

	3' Spacing	5' Spacing	
Signal Zero:	0	0	mV
Calibrated Amplitude:	85	85	mV
Reading at Signal Zero:	0.0158203	0.0169922	V
Reading in Free Pipe:	1.62	1.63	V
Gain:	52.9866	52.6966	
Offset:	1.5	0	

Gamma Ray Calibration Report

Serial Number: Titan6
 Tool Model: T6
 Performed: Tue Apr 08 13:01:44 2008

Calibrator Value: 0.0 GAPI

Background Reading: 1.0 cps
 Calibrator Reading: 0.0 cps

Sensitivity: 1.2000 GAPI/cps

Sensor	Offset (ft)	Schematic	Description	Len (ft)	OD (in)	Wt (lb)
GR	13.64		CHD-None (0)	0.75	1.50	5.00
			GR-T6 (Titan6)	2.52	2.25	25.00
WVF5	9.49		CBL-T6 (Titan6)	7.23	2.25	110.00
WVF3	8.49					
			CENT-X (2)	3.00	1.69	25.00

