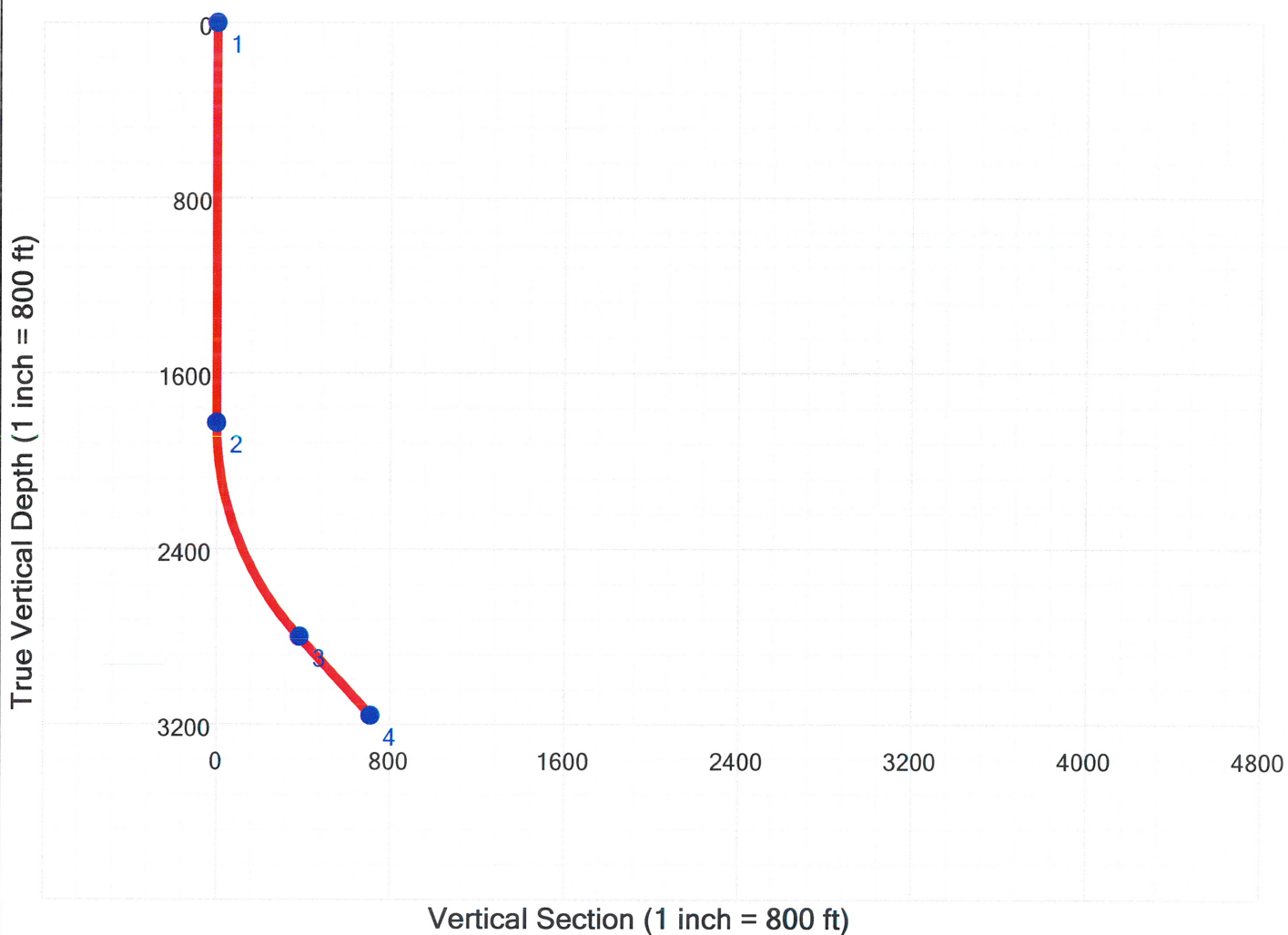
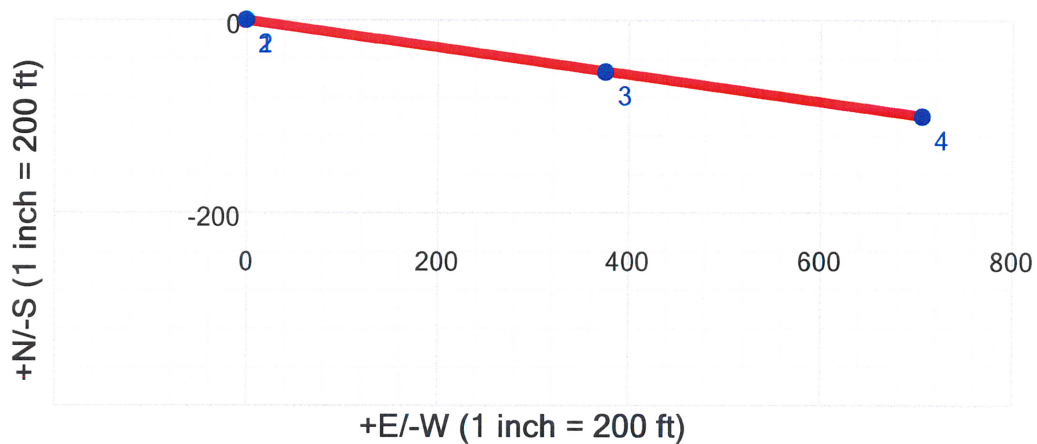


Wall Plot



#	MD	Inc	Azi	TVD	+N/-S	+E/-W	DL	TFO	VS	Comments	Company:	PRO&G
1	0.0	0.00	98.05	0.0	0.0	0.0	0.00	0.00	0.0		Project:	Mackinaw 12-28_Ver 2
2	1825.0	0.00	98.05	1825.0	0.0	0.0	0.00	0.00	0.0	Start ki	Well:	
3	2893.4	42.73	98.05	2797.1	-53.3	376.6	4.00	0.00	380.3	End of	By:	M. Felman
4	3385.0	42.73	98.05	3158.2	-100.0	706.8	0.00	-90.00	713.9		Date:	8/27/2010
											Vertical section azimuth:	98.05°
											Survey calculation method:	Minimum Curvature
											Units:	Length - ft, Dogleg - °/100ft



Survey

MD	Inclination	Azimuth	Tie-In	TVD	NS	EW	HD	VS@98.1°	DL	BR	TR	TFO	Comments
0.0	0.00	98.05	1	0.0	0.0	0.0	0.0	0.0	0.00	0.00	0.00	0.00	
100.0	0.00	98.05	0	100.0	0.0	0.0	0.0	0.0	0.00	0.00	0.00	0.00	
200.0	0.00	98.05	0	200.0	0.0	0.0	0.0	0.0	0.00	0.00	0.00	0.00	
300.0	0.00	98.05	0	300.0	0.0	0.0	0.0	0.0	0.00	0.00	0.00	0.00	
400.0	0.00	98.05	0	400.0	0.0	0.0	0.0	0.0	0.00	0.00	0.00	0.00	
500.0	0.00	98.05	0	500.0	0.0	0.0	0.0	0.0	0.00	0.00	0.00	0.00	
600.0	0.00	98.05	0	600.0	0.0	0.0	0.0	0.0	0.00	0.00	0.00	0.00	
700.0	0.00	98.05	0	700.0	0.0	0.0	0.0	0.0	0.00	0.00	0.00	0.00	
800.0	0.00	98.05	0	800.0	0.0	0.0	0.0	0.0	0.00	0.00	0.00	0.00	
900.0	0.00	98.05	0	900.0	0.0	0.0	0.0	0.0	0.00	0.00	0.00	0.00	
1,000.0	0.00	98.05	0	1,000.0	0.0	0.0	0.0	0.0	0.00	0.00	0.00	0.00	
1,100.0	0.00	98.05	0	1,100.0	0.0	0.0	0.0	0.0	0.00	0.00	0.00	0.00	
1,200.0	0.00	98.05	0	1,200.0	0.0	0.0	0.0	0.0	0.00	0.00	0.00	0.00	
1,300.0	0.00	98.05	0	1,300.0	0.0	0.0	0.0	0.0	0.00	0.00	0.00	0.00	
1,400.0	0.00	98.05	0	1,400.0	0.0	0.0	0.0	0.0	0.00	0.00	0.00	0.00	
1,500.0	0.00	98.05	0	1,500.0	0.0	0.0	0.0	0.0	0.00	0.00	0.00	0.00	
1,600.0	0.00	98.05	0	1,600.0	0.0	0.0	0.0	0.0	0.00	0.00	0.00	0.00	
1,700.0	0.00	98.05	0	1,700.0	0.0	0.0	0.0	0.0	0.00	0.00	0.00	0.00	
1,800.0	0.00	98.05	0	1,800.0	0.0	0.0	0.0	0.0	0.00	0.00	0.00	0.00	
1,825.0	0.00	98.05	0	1,825.0	0.0	0.0	0.0	0.0	0.00	0.00	0.00	0.00	Start kick
1,900.0	3.00	98.05	0	1,900.0	-0.3	1.9	2.0	2.0	4.00	4.00	0.00	0.00	
2,000.0	7.00	98.05	0	1,999.6	-1.5	10.6	10.7	10.7	4.00	4.00	0.00	0.00	
2,100.0	11.00	98.05	0	2,098.3	-3.7	26.1	26.3	26.3	4.00	4.00	0.00	0.00	
2,200.0	15.00	98.05	0	2,195.7	-6.8	48.3	48.8	48.8	4.00	4.00	0.00	0.00	
2,300.0	19.00	98.05	0	2,291.3	-10.9	77.3	78.0	78.0	4.00	4.00	0.00	0.00	
2,400.0	23.00	98.05	0	2,384.7	-15.9	112.7	113.9	113.9	4.00	4.00	0.00	0.00	
2,500.0	27.00	98.05	0	2,475.3	-21.9	154.6	156.1	156.1	4.00	4.00	0.00	0.00	
2,600.0	31.00	98.05	0	2,562.7	-28.6	202.5	204.6	204.6	4.00	4.00	0.00	0.00	
2,700.0	35.00	98.05	0	2,646.6	-36.3	256.5	259.0	259.0	4.00	4.00	0.00	0.00	
2,800.0	38.99	98.05	0	2,726.5	-44.7	316.0	319.2	319.2	4.00	4.00	0.00	0.00	
2,893.4	42.73	98.05	0	2,797.1	-53.3	376.5	380.3	380.3	4.00	4.00	0.00	0.00	End of b
2,900.0	42.73	98.05	0	2,801.9	-53.9	381.0	384.7	384.7	0.00	0.00	0.00	0.00	
3,000.0	42.73	98.05	0	2,875.4	-63.4	448.1	452.6	452.6	0.00	0.00	0.00	0.00	
3,100.0	42.73	98.05	0	2,948.8	-72.9	515.3	520.5	520.5	0.00	0.00	0.00	0.00	
3,200.0	42.73	98.05	0	3,022.3	-82.4	582.5	588.3	588.3	0.00	0.00	0.00	0.00	
3,300.0	42.73	98.05	0	3,095.8	-91.9	649.7	656.2	656.2	0.00	0.00	0.00	0.00	
3,333.1	42.73	98.05	0	3,120.1	-95.0	671.9	678.6	678.6	0.00	0.00	0.00	0.00	
3,385.0	42.73	98.05	0	3,158.2	-100.0	706.8	713.8	713.8	0.00	0.00	0.00	0.00	