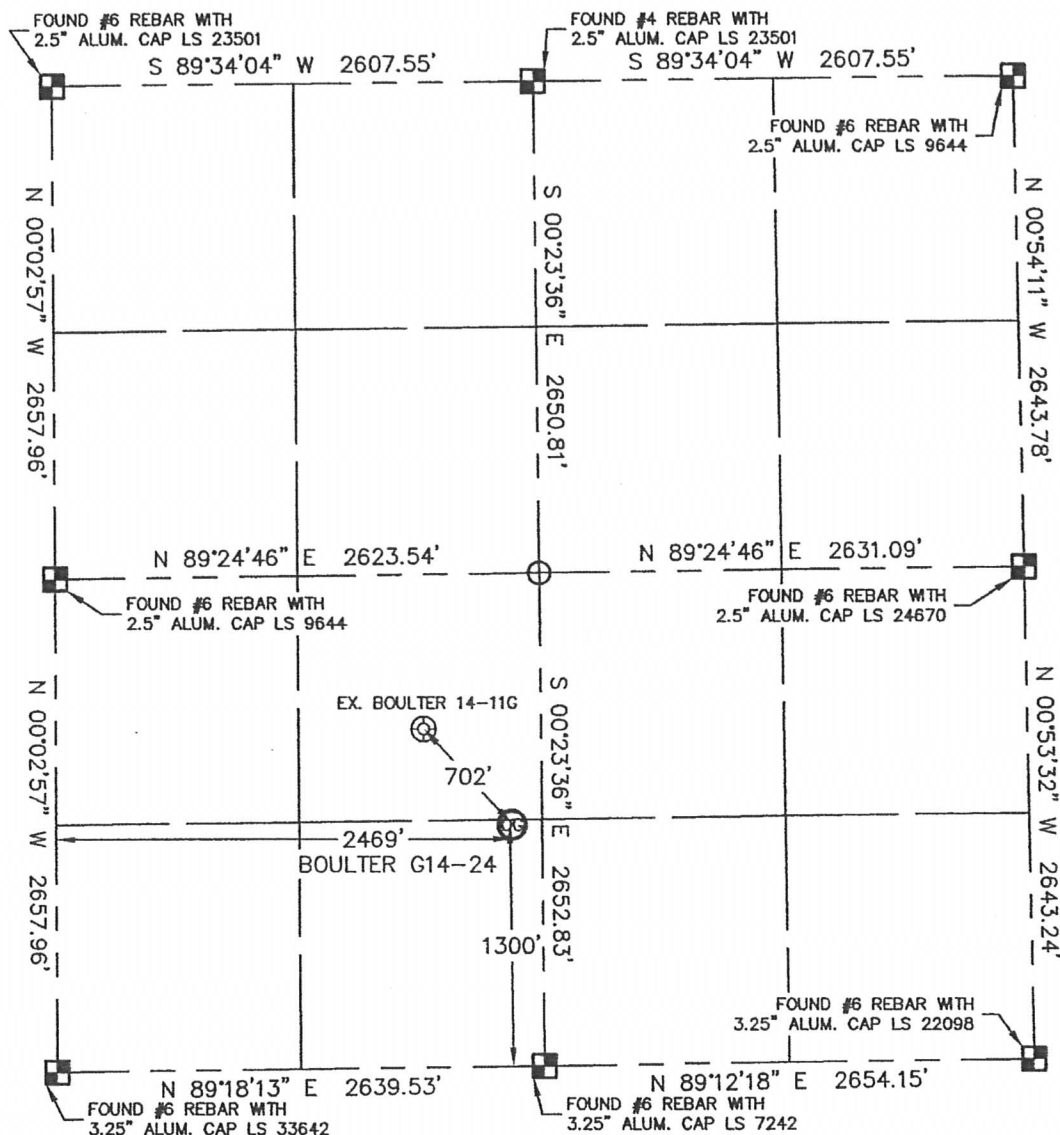


# WELL LOCATION CERTIFICATE

THIS MAP DOES NOT REPRESENT A BOUNDARY SURVEY

SECTION: 14  
TOWNSHIP: 4N  
RANGE: 65W



In accordance with a request from Mike Rodine with Noble Energy Inc. Lat40°, LLC has determined the surface location of the BOULTER G14-24 to be 1300' from the SOUTH line and 2469' from the WEST line as measured at right angles from the section line of Section 14, Township 4 North, Range 65 West of the Sixth Principal Meridian, County of Weld, State of Colorado.

I hereby state that this Well Location Certificate was prepared by me, or under my direct supervision, that the fieldwork was completed on 8/23/10, for and on behalf of Noble Energy Inc. That this is not a Land Survey Plat or an Improvement Survey Plat, and that it is not to be relied upon for establishment of fence, building, or other future improvement lines.

## NOTE:

- 1) Bearings shown are Grid Bearings of the Colorado State Plane Coordinate System, North Zone, North American Datum 1983/2007. The lineal dimensions as contained herein are based upon the "U.S. Survey Foot."
- 2) Ground elevations are based on an observed GPS elevation (NAVD 1988 DATUM).
- 3) NEAREST EXISTING WELL: BOULTER 14-11G 702'
- 4) IMPROVEMENTS: See LOCATION DRAWING exhibit for all visible improvements within 400' of disturbed area.
- 5) SURFACE USE: RANGELAND, PIVOT CORNER
- 6) INSTRUMENT OPERATOR: BRIAN BRINKMAN

## NOTE

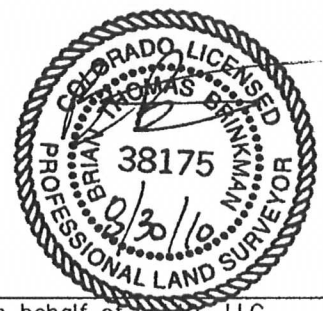
According to Colorado law, you must commence any legal action based upon any defect in this W.L.C. within three years after you discover such defect. In no event, may any action based upon any defect in this survey be commenced more than ten years after the date of the certificate shown hereon. (13-80-105 C.R.S.)

## LEGEND

- = ALIQUOT MONUMENT AS DESCRIBED
- = CALCULATED POSITION

## SURFACE LOCATION

LATITUDE: 40.30876°N  
LONGITUDE: 104.63086°W  
PDOP: 1.3  
ELEV: 4699  
1/4,1/4: SE1/4SW1/4  
NEAREST PROPERTY LINE: 162' EAST



Brian T. Brinkman—On behalf of Lat40°, LLC  
Colorado Licensed Professional  
Land Surveyor No. 38175

PROJECT#: 2010085

Lat40°, LLC

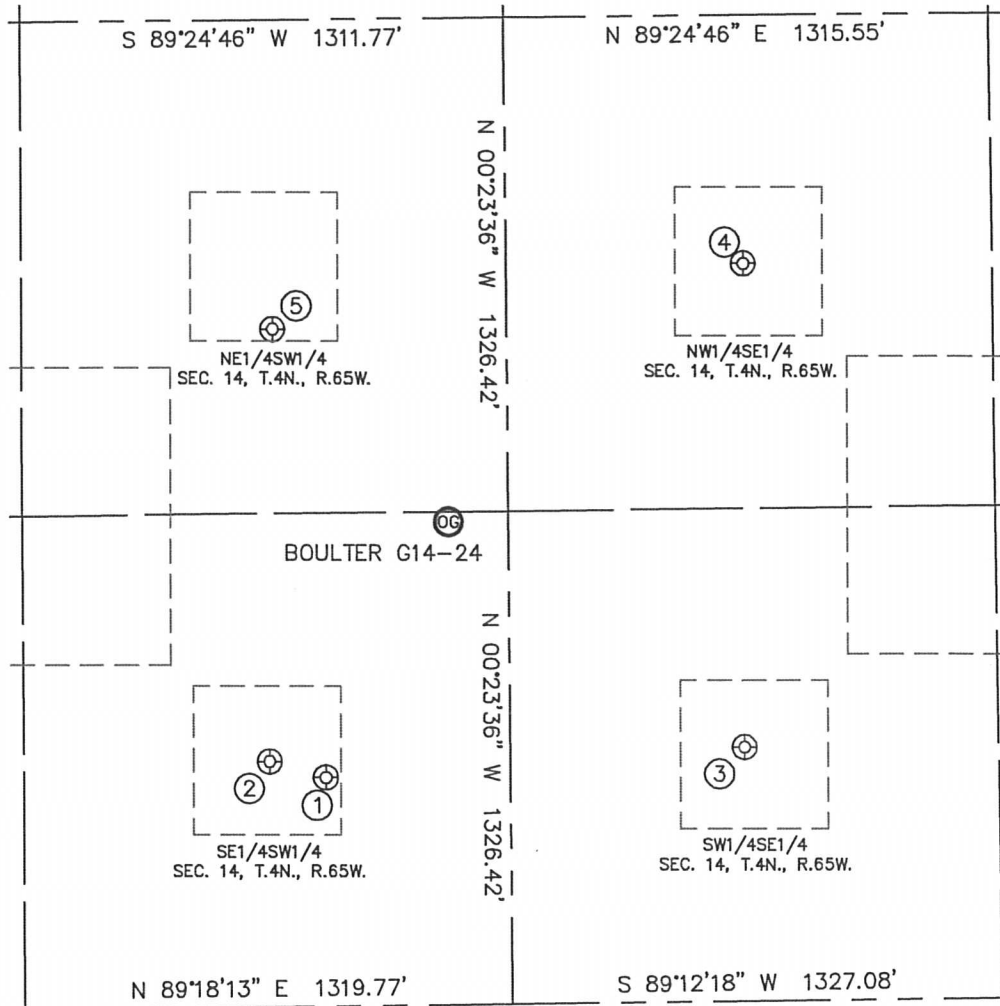
1635 Foxtrail Drive, Suite 325

Loveland, CO 80538

# SITE SKETCH

BOULTER G14-24

SECTION: 14  
TOWNSHIP: 4N  
RANGE: 65W



①

BOULTER 14-14G  
SE1/4SW1/4  
616' FSL  
2135' FWL  
LAT-40.30688°N  
LONG-104.63208°W  
PDOP: 2.0  
ELEV: 4700

②

VICTOR G14-14  
SE1/4SW1/4  
660' FSL  
1983' FWL  
LAT-40.30700°N  
LONG-104.63262°W  
PDOP: 1.9  
ELEV: 4700

③

SALLEE 14-43  
SW1/4SE1/4  
683' FSL  
2012' FEL  
LAT-40.30707°N  
LONG-104.62800°W  
PDOP: 1.7  
ELEV: 4706

④

SALLEE 14-3  
NW1/4SE1/4  
1983' FSL  
1993' FEL  
LAT-40.31064°N  
LONG-104.62796°W  
PDOP: 3.0  
ELEV: 4706

⑤

BOULTER 14-11G  
NE1/4SW1/4  
1822' FSL  
1994' FWL  
LAT-40.31019°N  
LONG-104.63255°W  
PDOP: 1.2  
ELEV: 4697

