
SAMSON RESOURCES CORP - EBUS

Ute 33-7-25 6

La Plata County , Colorado

Cement Surface Casing
09-Jul-2010

Post Job Documents

The Road to Excellence Starts with Safety

Sold To #: 345114	Ship To #: 345114	Quote #:	Sales Order #: 7489939
Customer: SAMSON RESOURCES CORP - EBUS		Customer Rep: Dennison, Fred	
Well Name: Ute 33-7-25		Well #: 6	API/UWI #:
Field:	City (SAP): TULSA	County/Parish: La Plata	State: Colorado
Contractor: H & P		Rig/Platform Name/Num: H & P 292	
Job Purpose: Cement Surface Casing			
Well Type: Development Well		Job Type: Cement Surface Casing	
Sales Person: MASON, KYLE		Srvc Supervisor: RICHESIN, ANTHONY	MBU ID Emp #: 412961

Job Personnel

HES Emp Name	Exp Hrs	Emp #	HES Emp Name	Exp Hrs	Emp #	HES Emp Name	Exp Hrs	Emp #
AXT, STEPHEN Gary	3.5	434802	ETCITY, JERRY	3.5	227876	GONZALEZ, ARMANDO	3.5	452786
RICHESIN, ANTHONY Ray	3.5	412961						

Equipment

HES Unit #	Distance-1 way	HES Unit #	Distance-1 way	HES Unit #	Distance-1 way	HES Unit #	Distance-1 way
10025024	53 mile	10829467	53 mile	11223557	53 mile		

Job Hours

Date	On Location Hours	Operating Hours	Date	On Location Hours	Operating Hours	Date	On Location Hours	Operating Hours
7/09/10	3.5	1						
TOTAL			Total is the sum of each column separately					

Job

Formation Name	Formation Depth (MD)	Top	Bottom	Form Type	Job depth MD	Job Depth TVD	Water Depth	Perforation Depth (MD)	From	To	Deparated Loc
				BHST	375. ft	375. ft					

Well Data

Description	New / Used	Max pressure psig	Size in	ID in	Weight lbm/ft	Thread	Grade	Top MD ft	Bottom MD ft	Top TVD ft	Bottom TVD ft
12 1/4" Open Hole				12.25				.	350.		
7 7/8" Open Hole				7.875				350.	3501.		
5 1/2" Production Casing	Unknown		5.5	4.892	17.			.	3500.		
8 5/8" Surface Casing	Unknown		8.625	7.921	32.			.	350.		

Sales/Rental/3rd Party (HES)

Description	Qty	Qty uom	Depth	Supplier
SUGAR, GRANULATED, IMPERIAL	200	LB		
PLUG,CMTG,TOP,8 5/8,HWE,7.20 MIN/8.09 MA	1	EA		

Tools and Accessories

Type	Size	Qty	Make	Depth	Type	Size	Qty	Make	Depth	Type	Size	Qty	Make
Guide Shoe					Packer					Top Plug	8 5/8	1	HES
Float Shoe					Bridge Plug					Bottom Plug			
Float Collar					Retainer					SSR plug set			
Insert Float										Plug Container			
Stage Tool										Centralizers			

Miscellaneous Materials													
Gelling Agt		Conc		Surfactant		Conc		Acid Type		Qty		Conc	%
Treatment Fld		Conc		Inhibitor		Conc		Sand Type		Size		Qty	
Fluid Data													
Stage/Plug #: 1													
Fluid #	Stage Type	Fluid Name			Qty	Qty uom	Mixing Density lbm/gal	Yield ft ³ /sk	Mix Fluid Gal/sk	Rate bbl/min	Total Mix Fluid Gal/sk		
1	Water Spacer				0.00	bbl	8.3	.0	.0	4.0			
2	Surface Cement	CMT - PREMIUM - CLASS G, 94 LB SK (100003685)			270.0	sacks	15.8	1.17	5.0	4.0	5.0		
	94 lbm	CMT - PREMIUM - CLASS G REG OR TYPE V, BULK (100003685)											
	2 %	CALCIUM CHLORIDE - HI TEST PELLET (100005053)											
	0.125 lbm	POLY-E-FLAKE (101216940)											
	4.998 Gal	FRESH WATER											
3	Water Displacement				0.00	bbl	8.3	.0	.0	4.0			
Calculated Values		Pressures			Volumes								
Displacement	21	Shut In: Instant			Lost Returns		Cement Slurry		56	Pad			
Top Of Cement	SURFACE	5 Min			Cement Returns		25	Actual Displacement		21	Treatment		
Frac Gradient		15 Min			Spacers		10	Load and Breakdown		Total Job		87	
Rates													
Circulating	2	Mixing 3.5			Displacement		3.5		Avg. Job		3		
Cement Left In Pipe	Amount	42 ft	Reason		Shoe Joint								
Frac Ring # 1 @	ID	Frac ring # 2 @		ID	Frac Ring # 3 @		ID	Frac Ring # 4 @		ID			
The Information Stated Herein Is Correct					Customer Representative Signature								

The Road to Excellence Starts with Safety

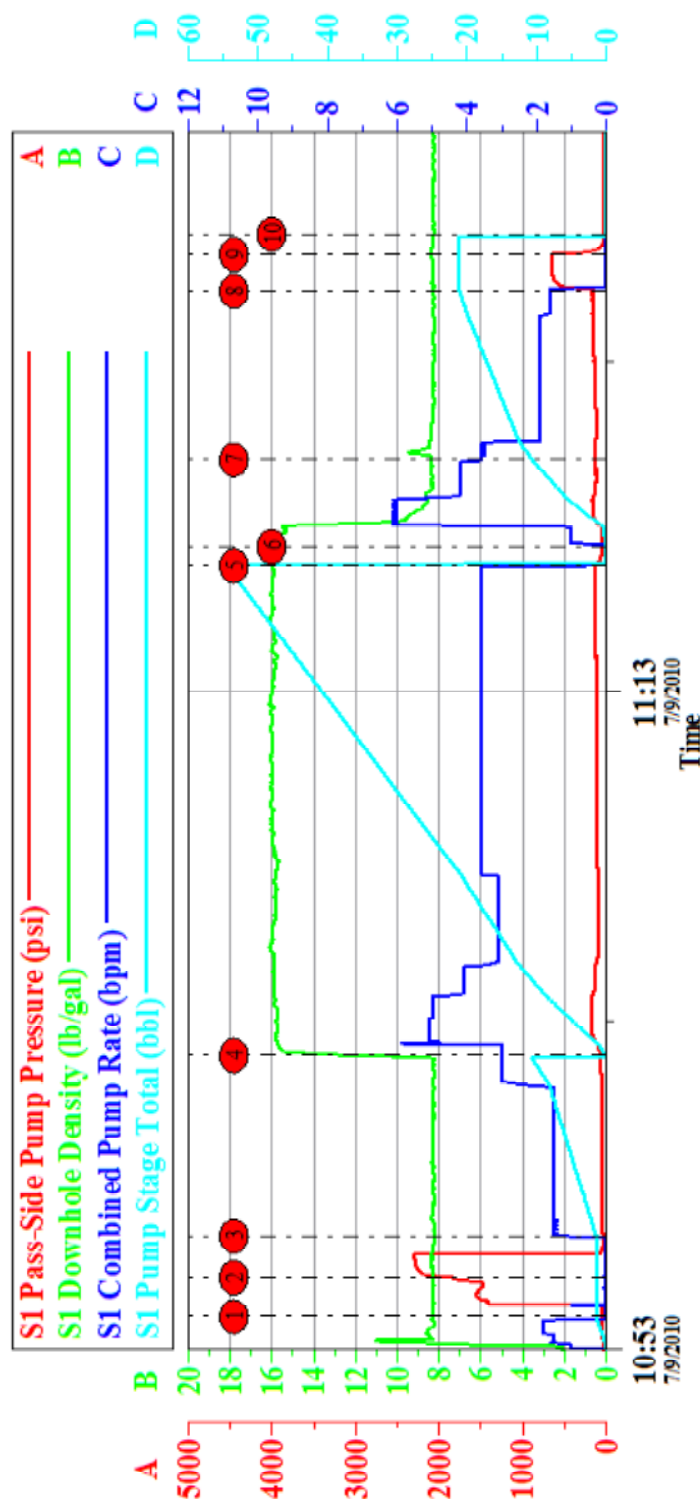
Sold To #: 345114	Ship To #: 345114	Quote #:	Sales Order #: 7489939
Customer: SAMSON RESOURCES CORP - EBUS		Customer Rep: Dennison, Fred	
Well Name: Ute 33-7-25	Well #: 6	API/UWI #:	
Field:	City (SAP): TULSA	County/Parish: La Plata	State: Colorado
Legal Description:			
Lat:		Long:	
Contractor: H & P		Rig/Platform Name/Num: H & P 292	
Job Purpose: Cement Surface Casing			Ticket Amount:
Well Type: Development Well		Job Type: Cement Surface Casing	
Sales Person: MASON, KYLE		Srvc Supervisor: RICHESIN, ANTHONY	MBU ID Emp #: 412961

Activity Description	Date/Time	Cht #	Rate bbl/min	Volume bbl		Pressure psig		Comments
				Stage	Total	Tubing	Casing	
Call Out	07/09/2010 05:30							CALLED CREW AT 0530 ON 7 /9/10
Safety Meeting - Service Center or other Site	07/09/2010 07:30							SAFETY MEETING INVOLVING THE ENTIRE CMT CREW
Arrive At Loc	07/09/2010 09:20							1 F 450 1 RED TIGER 1 660 BULK TRUCK 10025024 2% CC .125 LBM POLYFLAKE
Assessment Of Location Safety Meeting	07/09/2010 09:30							ASSESSMENT OF LOCATION INVOLVING THE ENTIRE CMT CREW
Pre-Rig Up Safety Meeting	07/09/2010 09:35							SAFETY MEETING INVOLVING THE ENTIRE CMT CREW
Rig-Up Equipment	07/09/2010 09:40							
Pre-Job Safety Meeting	07/09/2010 10:30							SAFETY MEETING INVOLVING EVERYONE ON LOCATION
Start Job	07/09/2010 10:54							
Test Lines	07/09/2010 10:55							2000 PSI TEST GOOD HOLD FOR 2 MINUTES
Pump Spacer 1	07/09/2010 10:56		2	10	10		70.0	FRESH WATER SPACER 10 BBL
Pump Lead Cement	07/09/2010 11:01		3.5	56	56		176.0	56 BBL @15.8# YIELD 1.17 GAL SK 5.0
Drop Top Plug	07/09/2010 11:16							PLUG LEFT THE PLUG CONTAINER
Pump Displacement	07/09/2010 11:17		4	10	10		100.0	21 BBL FRESH WATER DISPLACEMENT

Activity Description	Date/Time	Cht #	Rate bbl/ min	Volume bbl		Pressure psig		Comments
				Stage	Total	Tubing	Casing	
Slow Rate	07/09/2010 11:20		1.5	11	11		160.0	SLOW RATE THE LAST 10 BBLS OF DISPLACEMENT TO LAND THE PLUG
Bump Plug	07/09/2010 11:25		1.5	21	21		660.0	PLUG LANDED CALCULATED 128 PSI TOOK TO 660 PSI
Check Floats	07/09/2010 11:26							FLOATS HELD 1/4 BBL BACK TO TRUCK
End Job	07/09/2010 11:27							GOOD CIRCULATION THROUGHOUT THE ENTIRE CMT JOB, NO PIPE MOVEMENT,
Comment	07/09/2010 11:28							THANK YOU FOR USING HALLIBURTON, ANTHONY RICHESIN AND CREW
Pre-Rig Down Safety Meeting	07/09/2010 12:00							SAFETY MEETING INVOLVING THE ENTIRE CMT CREW
Rig-Down Equipment	07/09/2010 12:05							
Safety Meeting - Departing Location	07/09/2010 12:45							SAFETY MEETING INVOLVING THE ENTIRE CMT CREW

SAMSON

UTE 33-7-25 WELL#6



Local Event Log			
Maximum	SPPP	Maximum	SPPP
1 START JOB	10:54:02	1857	2294
2 CEMENT	11:01:57	176.0	117.0
3 SLOW RATE	11:20:04	170.0	659.0
4 END JOB	11:26:55	30.00	653.0
5 PRESSURE TEST	10:55:13	1055.13	70.22
6 DROP PLUG	11:01:57	11:01:57	168.0
7 BUMP PLUG	11:25:12	11:25:12	653.0
8 H2O SPACER	10:56:28	10:56:28	70.22
9 DISPLACEMENT	11:07:25	11:07:25	168.0
10 CHECK FLOATS	11:26:18	11:26:18	653.0

Customer: SAMSON	Job Date: 09-Jul-2010	Sales Order #: 7489939
Well Description: UTE 33-7-25	Job type: SURFACE	ADC Used: YES
Customer Rep: FRED DENISON	Service Supervisor: ANTHONY RICHESIN	Operator/Pump: JERRY

OptiCem v6.4.0
09-Jul-10 11:51