

SCALE: 1" = 40'

DATE: 03-03-10

DRAWN BY: D.R.B.

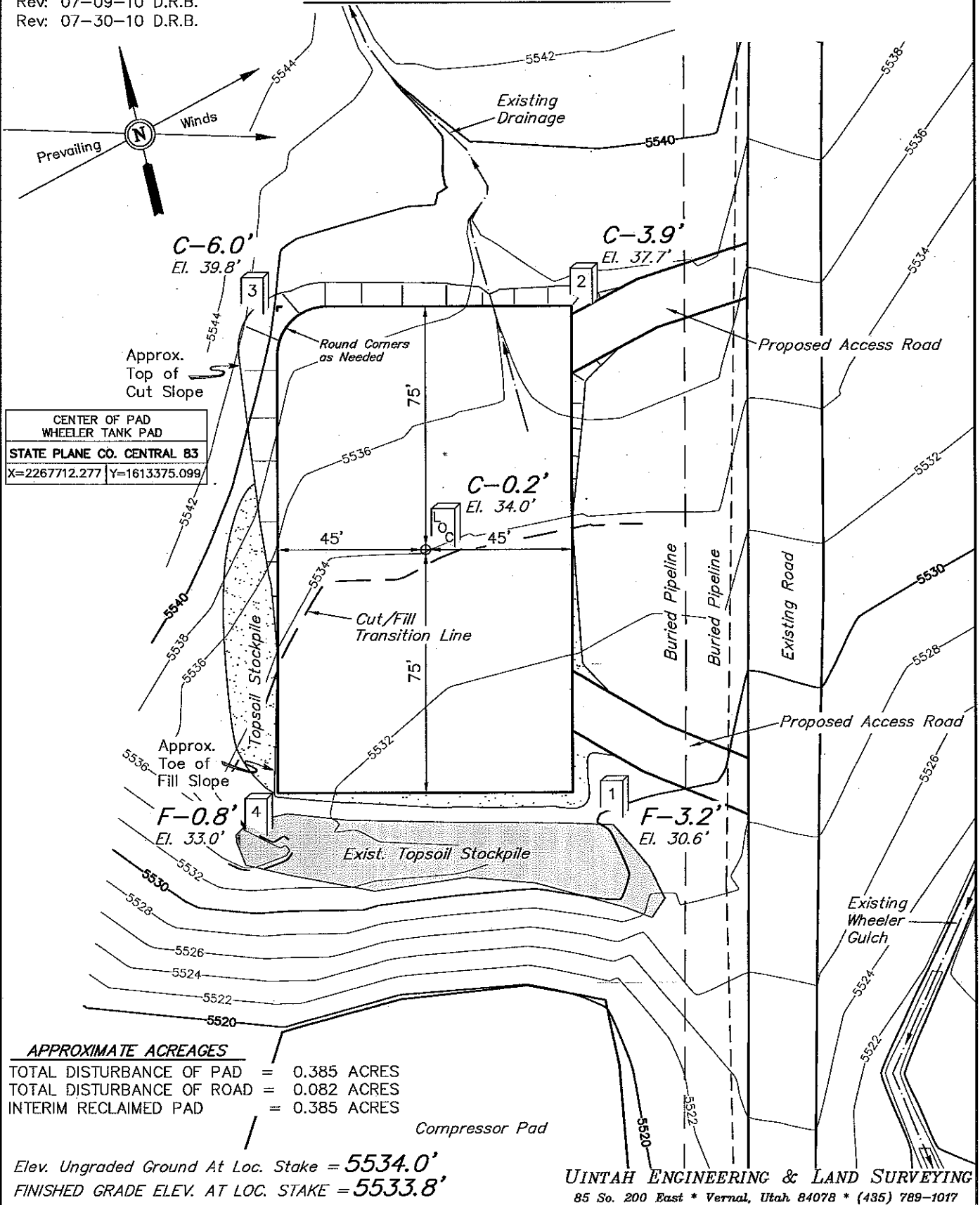
Rev: 03-04-10 D.R.B.

Rev: 07-09-10 D.R.B.

Rev: 07-30-10 D.R.B.

WILLIAMS PRODUCTION RMT COMPANY

PLAT#1 CONSTRUCTION LAYOUT FOR WHEELER TANK PAD SECTION 27, T6S, R96W, 6th P.M.

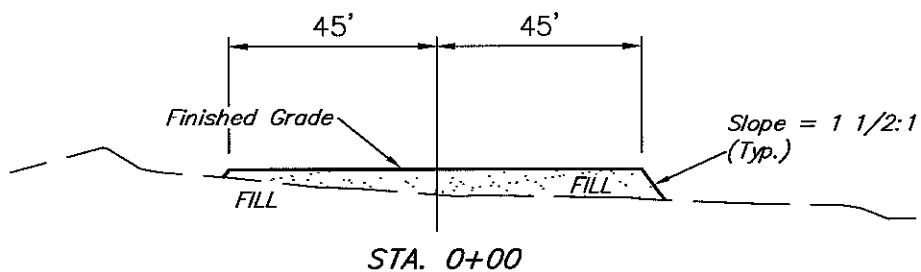
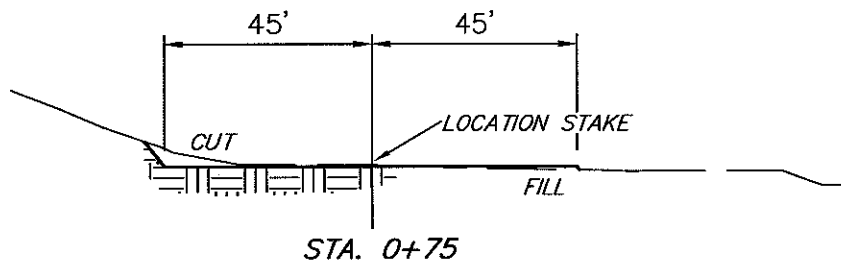
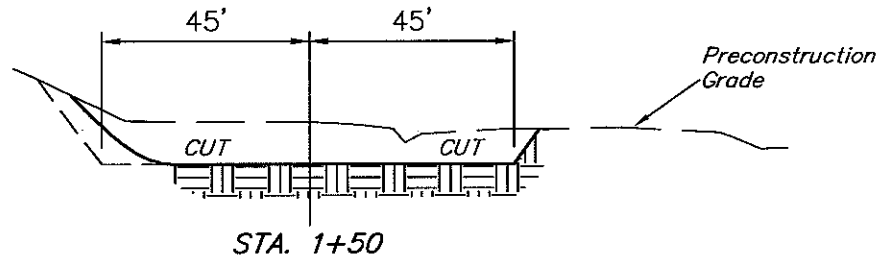


1" = 20'
X-Section
Scale
1" = 40'

WILLIAMS PRODUCTION RMT COMPANY

PLAT#2_CONSTRUCTION LAYOUT CROSS
SECTION FOR WHEELER TANK PAD
SECTION 27, T6S, R96W, 6th P.M.

DATE: 03-03-10
DRAWN BY: D.R.B.
Revised: 07-09-10 D.R.B.



NOTE:

Topsoil should not be
Stripped Below Finished
Grade on Substructure Area.

* NOTE:

FILL QUANTITY INCLUDES
5% FOR COMPACTION

APPROXIMATE YARDAGES

(6") Topsoil Stripping	=	300 Cu. Yds.
Remaining Location	=	520 Cu. Yds.
TOTAL CUT	=	820 CU.YDS.
FILL	=	520 CU.YDS.

EXCESS MATERIAL	=	300 Cu. Yds.
Topsoil	=	300 Cu. Yds.

EXCESS UNBALANCE	=	0 Cu. Yds.
(After Interim Rehabilitation)		

UINTAH ENGINEERING & LAND SURVEYING
85 So. 200 East * Vernal, Utah 84078 * (435) 789-1017