

ENSIGN

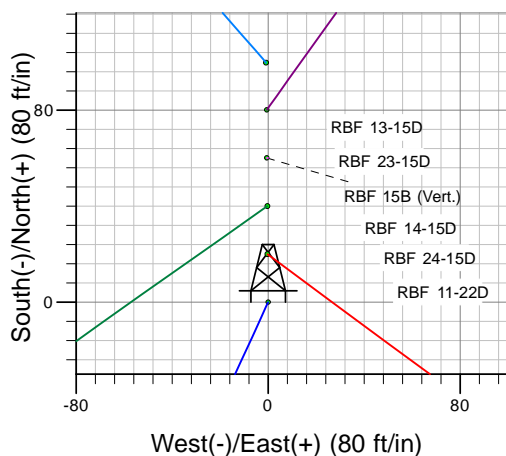
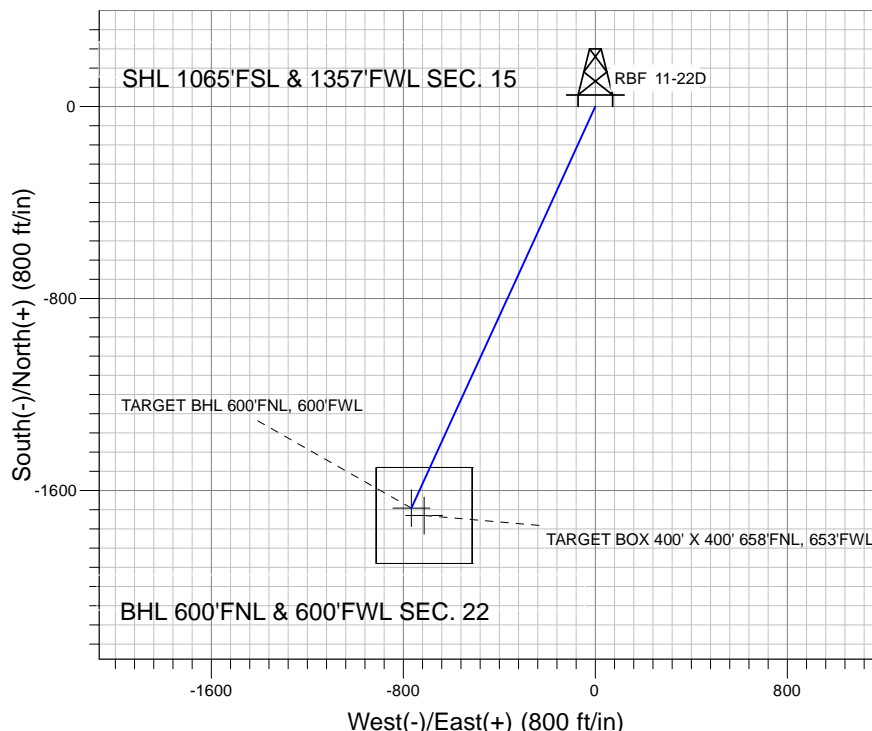
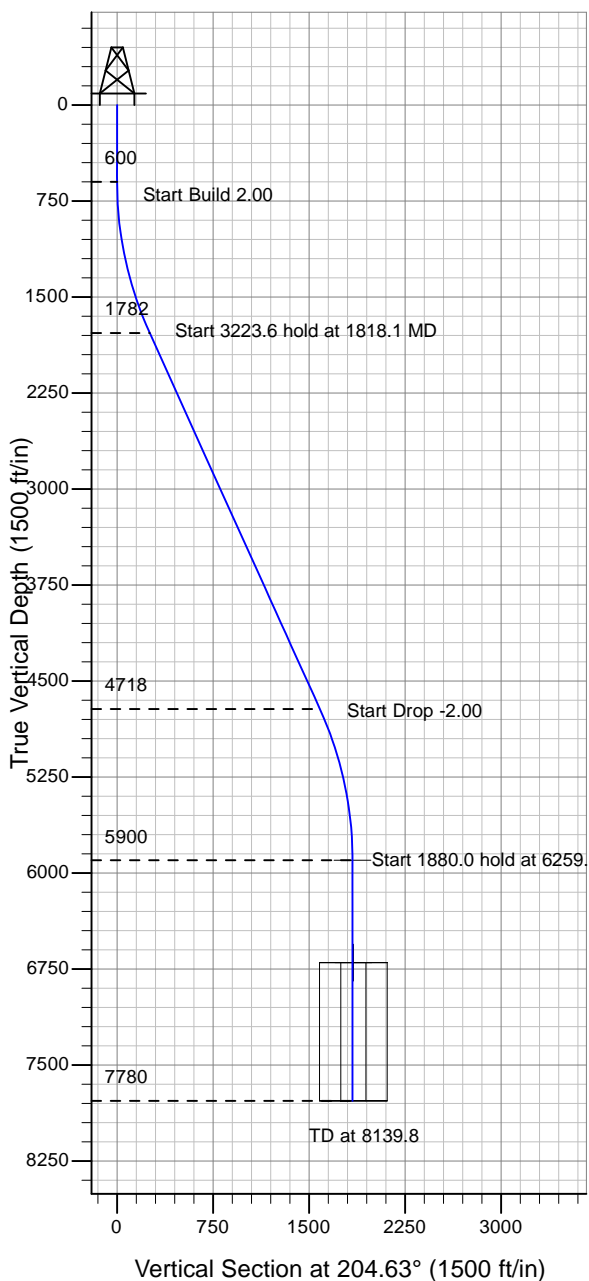
Directional

Well Name: RBF 11-22D

Surface Location: RBF 24-15D Pad Sec.15-T6N-R67W
 North American Datum 1983 , US State Plane 1983 , Colorado Northern Zone
 Ground Elevation: 4780.0

+N/-S+E/-W Northing Easting Latitude Longitude Slot
 0.0 0.0 1419235.17 3171309.76 40° 28' 57.248 N 104° 53' 2.947 W
 Original Well Elev WELL @ 4793.0ft (Original Well Elev)

Synergy Resources



RBF 24-15D Pad Sec.15-T6N-R67W
 RBF 11-22D
 Plan #2 (8-31-10)
 15:45, August 31 2010



Azimuths to True North
 Magnetic North: 9.04°

Magnetic Field
 Strength: 53245.6snT
 Dip Angle: 67.12°
 Date: 8/30/2010
 Model: IGRF2010

WELLBORE TARGET DETAILS (LAT/LONG)

Name	TVD	+N/-S	+E/-W	Latitude	Longitude	Shape
TARGET BHL 600'FNL, 600'FWL	5900.0	-1672.6	-766.7	40° 28' 40.721 N	104° 53' 12.869 W	Point
TARGET BOX 400' X 400' 658'FNL, 653'FWL	6700.0	-1703.6	-713.7	40° 28' 40.414 N	104° 53' 12.183 W	Rectangle (Sides: L400.0 W400.0)

SECTION DETAILS

Sec	MD	Inc	Azi	TVD	+N/-S	+E/-W	DLeg	TFace	VSec	Target
1	0.0	0.00	0.00	0.0	0.0	0.0	0.00	0.00	0.0	
2	600.0	0.00	0.00	600.0	0.0	0.0	0.00	0.00	0.0	
3	1818.1	24.36	204.63	1781.7	-231.9	-106.3	2.00	204.63	255.1	
4	5041.7	24.36	204.63	4718.3	-1440.7	-660.4	0.00	0.00	1584.8	
5	6259.8	0.00	0.00	5900.0	-1672.6	-766.7	2.00	180.00	1839.9	TARGET BHL 600'FNL, 600'FWL
6	8139.8	0.00	0.00	7780.0	-1672.6	-766.7	0.00	0.00	1839.9	



Synergy Resources

SEC.15-T6N-R67W

RBF 24-15D Pad Sec.15-T6N-R67W

RBF 11-22D

Wellbore #1

Plan: Plan #2 (8-31-10)

Standard Planning Report

31 August, 2010

Database:	EDM den0-adp01 Server Data	Local Co-ordinate Reference:	Well RBF 11-22D
Company:	Synergy Resources	TVD Reference:	WELL @ 4793.0ft (Original Well Elev)
Project:	SEC.15-T6N-R67W	MD Reference:	WELL @ 4793.0ft (Original Well Elev)
Site:	RBF 24-15D Pad Sec.15-T6N-R67W	North Reference:	True
Well:	RBF 11-22D	Survey Calculation Method:	Minimum Curvature
Wellbore:	Wellbore #1		
Design:	Plan #2 (8-31-10)		

Project	SEC.15-T6N-R67W, Weld County, Colorado		
Map System:	US State Plane 1983	System Datum:	Mean Sea Level
Geo Datum:	North American Datum 1983		Using Well Reference Point
Map Zone:	Colorado Northern Zone		Using geodetic scale factor

Site						RBF 24-15D Pad Sec.15-T6N-R67W											
Site Position:						Northing:			1,419,255.21 ft			Latitude:			40° 28' 57.446 N		
From:			Lat/Long			Easting:			3,171,309.35ft			Longitude:			104° 53' 2.951 W		
Position Uncertainty:			0.0 ft			Slot Radius:			"			Grid Convergence:			0.40 °		

Well	RBF 11-22D					
Well Position	+N/-S	-20.0 ft	Northing:	1,419,235.17 ft	Latitude:	40° 28' 57.248 N
	+E/-W	0.3 ft	Easting:	3,171,309.76 ft	Longitude:	104° 53' 2.947 W
Position Uncertainty		0.0 ft	Wellhead Elevation:	ft	Ground Level:	4,780.0 ft

Wellbore	Wellbore #1				
Magnetics	Model Name	Sample Date	Declination (°)	Dip Angle (°)	Field Strength (nT)
	IGRF2010	8/30/2010	9.04	67.12	53,246

Design	Plan #2 (8-31-10)			
Audit Notes:				
Version:	Phase:	PROTOTYPE	Tie On Depth:	0.0
Vertical Section:	Depth From (TVD) (ft)	+N/-S (ft)	+E/-W (ft)	Direction (°)
	0.0	0.0	0.0	204.63

Plan Sections										
Measured Depth (ft)	Inclination (°)	Azimuth (°)	Vertical Depth (ft)	+N/-S (ft)	+E/-W (ft)	Dogleg Rate (°/100ft)	Build Rate (°/100ft)	Turn Rate (°/100ft)	TFO (°)	Target
0.0	0.00	0.00	0.0	0.0	0.0	0.00	0.00	0.00	0.00	
600.0	0.00	0.00	600.0	0.0	0.0	0.00	0.00	0.00	0.00	
1,818.1	24.36	204.63	1,781.7	-231.9	-106.3	2.00	2.00	0.00	204.63	
5,041.7	24.36	204.63	4,718.3	-1,440.7	-660.4	0.00	0.00	0.00	0.00	
6,259.8	0.00	0.00	5,900.0	-1,672.6	-766.7	2.00	-2.00	0.00	180.00	TARGET BHL 600'I
8,139.8	0.00	0.00	7,780.0	-1,672.6	-766.7	0.00	0.00	0.00	0.00	

Database:	EDM den0-adp01 Server Data	Local Co-ordinate Reference:	Well RBF 11-22D
Company:	Synergy Resources	TVD Reference:	WELL @ 4793.0ft (Original Well Elev)
Project:	SEC.15-T6N-R67W	MD Reference:	WELL @ 4793.0ft (Original Well Elev)
Site:	RBF 24-15D Pad Sec.15-T6N-R67W	North Reference:	True
Well:	RBF 11-22D	Survey Calculation Method:	Minimum Curvature
Wellbore:	Wellbore #1		
Design:	Plan #2 (8-31-10)		

Planned Survey									
Measured Depth (ft)	Inclination (°)	Azimuth (°)	Vertical Depth (ft)	+N/-S (ft)	+E/-W (ft)	Vertical Section (ft)	Dogleg Rate (°/100ft)	Build Rate (°/100ft)	Turn Rate (°/100ft)
0.0	0.00	0.00	0.0	0.0	0.0	0.0	0.00	0.00	0.00
40.0	0.00	0.00	40.0	0.0	0.0	0.0	0.00	0.00	0.00
80.0	0.00	0.00	80.0	0.0	0.0	0.0	0.00	0.00	0.00
120.0	0.00	0.00	120.0	0.0	0.0	0.0	0.00	0.00	0.00
160.0	0.00	0.00	160.0	0.0	0.0	0.0	0.00	0.00	0.00
200.0	0.00	0.00	200.0	0.0	0.0	0.0	0.00	0.00	0.00
240.0	0.00	0.00	240.0	0.0	0.0	0.0	0.00	0.00	0.00
280.0	0.00	0.00	280.0	0.0	0.0	0.0	0.00	0.00	0.00
320.0	0.00	0.00	320.0	0.0	0.0	0.0	0.00	0.00	0.00
360.0	0.00	0.00	360.0	0.0	0.0	0.0	0.00	0.00	0.00
400.0	0.00	0.00	400.0	0.0	0.0	0.0	0.00	0.00	0.00
440.0	0.00	0.00	440.0	0.0	0.0	0.0	0.00	0.00	0.00
480.0	0.00	0.00	480.0	0.0	0.0	0.0	0.00	0.00	0.00
520.0	0.00	0.00	520.0	0.0	0.0	0.0	0.00	0.00	0.00
560.0	0.00	0.00	560.0	0.0	0.0	0.0	0.00	0.00	0.00
600.0	0.00	0.00	600.0	0.0	0.0	0.0	0.00	0.00	0.00
640.0	0.80	204.63	640.0	-0.3	-0.1	0.3	2.00	2.00	0.00
680.0	1.60	204.63	680.0	-1.0	-0.5	1.1	2.00	2.00	0.00
720.0	2.40	204.63	720.0	-2.3	-1.0	2.5	2.00	2.00	0.00
760.0	3.20	204.63	759.9	-4.1	-1.9	4.5	2.00	2.00	0.00
800.0	4.00	204.63	799.8	-6.3	-2.9	7.0	2.00	2.00	0.00
840.0	4.80	204.63	839.7	-9.1	-4.2	10.0	2.00	2.00	0.00
880.0	5.60	204.63	879.6	-12.4	-5.7	13.7	2.00	2.00	0.00
920.0	6.40	204.63	919.3	-16.2	-7.4	17.9	2.00	2.00	0.00
960.0	7.20	204.63	959.1	-20.5	-9.4	22.6	2.00	2.00	0.00
1,000.0	8.00	204.63	998.7	-25.3	-11.6	27.9	2.00	2.00	0.00
1,040.0	8.80	204.63	1,038.3	-30.7	-14.1	33.7	2.00	2.00	0.00
1,080.0	9.60	204.63	1,077.8	-36.5	-16.7	40.1	2.00	2.00	0.00
1,120.0	10.40	204.63	1,117.1	-42.8	-19.6	47.1	2.00	2.00	0.00
1,160.0	11.20	204.63	1,156.4	-49.6	-22.7	54.6	2.00	2.00	0.00
1,200.0	12.00	204.63	1,195.6	-56.9	-26.1	62.6	2.00	2.00	0.00
1,240.0	12.80	204.63	1,234.7	-64.7	-29.7	71.2	2.00	2.00	0.00
1,280.0	13.60	204.63	1,273.6	-73.0	-33.5	80.3	2.00	2.00	0.00
1,320.0	14.40	204.63	1,312.4	-81.8	-37.5	90.0	2.00	2.00	0.00
1,360.0	15.20	204.63	1,351.1	-91.1	-41.8	100.2	2.00	2.00	0.00
1,400.0	16.00	204.63	1,389.6	-100.9	-46.2	111.0	2.00	2.00	0.00
1,440.0	16.80	204.63	1,428.0	-111.1	-51.0	122.3	2.00	2.00	0.00
1,480.0	17.60	204.63	1,466.2	-121.9	-55.9	134.1	2.00	2.00	0.00
1,520.0	18.40	204.63	1,504.3	-133.1	-61.0	146.5	2.00	2.00	0.00
1,560.0	19.20	204.63	1,542.1	-144.9	-66.4	159.3	2.00	2.00	0.00
1,600.0	20.00	204.63	1,579.8	-157.1	-72.0	172.8	2.00	2.00	0.00
1,640.0	20.80	204.63	1,617.3	-169.7	-77.8	186.7	2.00	2.00	0.00
1,680.0	21.60	204.63	1,654.6	-182.9	-83.8	201.2	2.00	2.00	0.00
1,720.0	22.40	204.63	1,691.7	-196.5	-90.1	216.2	2.00	2.00	0.00
1,760.0	23.20	204.63	1,728.6	-210.6	-96.5	231.7	2.00	2.00	0.00
1,800.0	24.00	204.63	1,765.2	-225.1	-103.2	247.7	2.00	2.00	0.00
1,818.1	24.36	204.63	1,781.7	-231.9	-106.3	255.1	2.00	2.00	0.00
1,840.0	24.36	204.63	1,801.7	-240.1	-110.1	264.1	0.00	0.00	0.00
1,880.0	24.36	204.63	1,838.1	-255.1	-116.9	280.6	0.00	0.00	0.00
1,920.0	24.36	204.63	1,874.6	-270.1	-123.8	297.1	0.00	0.00	0.00
1,960.0	24.36	204.63	1,911.0	-285.1	-130.7	313.6	0.00	0.00	0.00
2,000.0	24.36	204.63	1,947.4	-300.1	-137.6	330.1	0.00	0.00	0.00
2,040.0	24.36	204.63	1,983.9	-315.1	-144.4	346.6	0.00	0.00	0.00
2,080.0	24.36	204.63	2,020.3	-330.1	-151.3	363.1	0.00	0.00	0.00

Database:	EDM den0-adp01 Server Data	Local Co-ordinate Reference:	Well RBF 11-22D
Company:	Synergy Resources	TVD Reference:	WELL @ 4793.0ft (Original Well Elev)
Project:	SEC.15-T6N-R67W	MD Reference:	WELL @ 4793.0ft (Original Well Elev)
Site:	RBF 24-15D Pad Sec.15-T6N-R67W	North Reference:	True
Well:	RBF 11-22D	Survey Calculation Method:	Minimum Curvature
Wellbore:	Wellbore #1		
Design:	Plan #2 (8-31-10)		

Planned Survey									
Measured Depth (ft)	Inclination (°)	Azimuth (°)	Vertical Depth (ft)	+N/-S (ft)	+E/-W (ft)	Vertical Section (ft)	Dogleg Rate (°/100ft)	Build Rate (°/100ft)	Turn Rate (°/100ft)
2,120.0	24.36	204.63	2,056.7	-345.1	-158.2	379.6	0.00	0.00	0.00
2,160.0	24.36	204.63	2,093.2	-360.1	-165.1	396.1	0.00	0.00	0.00
2,200.0	24.36	204.63	2,129.6	-375.1	-171.9	412.6	0.00	0.00	0.00
2,240.0	24.36	204.63	2,166.1	-390.1	-178.8	429.1	0.00	0.00	0.00
2,280.0	24.36	204.63	2,202.5	-405.1	-185.7	445.6	0.00	0.00	0.00
2,320.0	24.36	204.63	2,238.9	-420.1	-192.6	462.1	0.00	0.00	0.00
2,360.0	24.36	204.63	2,275.4	-435.1	-199.4	478.6	0.00	0.00	0.00
2,400.0	24.36	204.63	2,311.8	-450.1	-206.3	495.1	0.00	0.00	0.00
2,440.0	24.36	204.63	2,348.2	-465.1	-213.2	511.6	0.00	0.00	0.00
2,480.0	24.36	204.63	2,384.7	-480.1	-220.1	528.1	0.00	0.00	0.00
2,520.0	24.36	204.63	2,421.1	-495.1	-227.0	544.6	0.00	0.00	0.00
2,560.0	24.36	204.63	2,457.6	-510.1	-233.8	561.1	0.00	0.00	0.00
2,600.0	24.36	204.63	2,494.0	-525.1	-240.7	577.6	0.00	0.00	0.00
2,640.0	24.36	204.63	2,530.4	-540.1	-247.6	594.1	0.00	0.00	0.00
2,680.0	24.36	204.63	2,566.9	-555.1	-254.5	610.6	0.00	0.00	0.00
2,720.0	24.36	204.63	2,603.3	-570.1	-261.3	627.1	0.00	0.00	0.00
2,760.0	24.36	204.63	2,639.8	-585.1	-268.2	643.6	0.00	0.00	0.00
2,800.0	24.36	204.63	2,676.2	-600.1	-275.1	660.1	0.00	0.00	0.00
2,840.0	24.36	204.63	2,712.6	-615.1	-282.0	676.6	0.00	0.00	0.00
2,880.0	24.36	204.63	2,749.1	-630.1	-288.8	693.1	0.00	0.00	0.00
2,920.0	24.36	204.63	2,785.5	-645.1	-295.7	709.6	0.00	0.00	0.00
2,960.0	24.36	204.63	2,821.9	-660.1	-302.6	726.1	0.00	0.00	0.00
3,000.0	24.36	204.63	2,858.4	-675.1	-309.5	742.6	0.00	0.00	0.00
3,040.0	24.36	204.63	2,894.8	-690.1	-316.3	759.1	0.00	0.00	0.00
3,080.0	24.36	204.63	2,931.3	-705.1	-323.2	775.6	0.00	0.00	0.00
3,120.0	24.36	204.63	2,967.7	-720.1	-330.1	792.1	0.00	0.00	0.00
3,160.0	24.36	204.63	3,004.1	-735.1	-337.0	808.6	0.00	0.00	0.00
3,200.0	24.36	204.63	3,040.6	-750.1	-343.8	825.1	0.00	0.00	0.00
3,240.0	24.36	204.63	3,077.0	-765.1	-350.7	841.6	0.00	0.00	0.00
3,280.0	24.36	204.63	3,113.5	-780.1	-357.6	858.1	0.00	0.00	0.00
3,320.0	24.36	204.63	3,149.9	-795.1	-364.5	874.6	0.00	0.00	0.00
3,360.0	24.36	204.63	3,186.3	-810.1	-371.3	891.1	0.00	0.00	0.00
3,400.0	24.36	204.63	3,222.8	-825.1	-378.2	907.6	0.00	0.00	0.00
3,440.0	24.36	204.63	3,259.2	-840.1	-385.1	924.1	0.00	0.00	0.00
3,480.0	24.36	204.63	3,295.6	-855.1	-392.0	940.6	0.00	0.00	0.00
3,520.0	24.36	204.63	3,332.1	-870.1	-398.8	957.1	0.00	0.00	0.00
3,560.0	24.36	204.63	3,368.5	-885.1	-405.7	973.6	0.00	0.00	0.00
3,600.0	24.36	204.63	3,405.0	-900.1	-412.6	990.1	0.00	0.00	0.00
3,640.0	24.36	204.63	3,441.4	-915.1	-419.5	1,006.6	0.00	0.00	0.00
3,680.0	24.36	204.63	3,477.8	-930.1	-426.4	1,023.1	0.00	0.00	0.00
3,720.0	24.36	204.63	3,514.3	-945.1	-433.2	1,039.6	0.00	0.00	0.00
3,760.0	24.36	204.63	3,550.7	-960.1	-440.1	1,056.1	0.00	0.00	0.00
3,800.0	24.36	204.63	3,587.1	-975.1	-447.0	1,072.6	0.00	0.00	0.00
3,840.0	24.36	204.63	3,623.6	-990.1	-453.9	1,089.1	0.00	0.00	0.00
3,880.0	24.36	204.63	3,660.0	-1,005.1	-460.7	1,105.6	0.00	0.00	0.00
3,920.0	24.36	204.63	3,696.5	-1,020.1	-467.6	1,122.1	0.00	0.00	0.00
3,960.0	24.36	204.63	3,732.9	-1,035.1	-474.5	1,138.6	0.00	0.00	0.00
4,000.0	24.36	204.63	3,769.3	-1,050.1	-481.4	1,155.1	0.00	0.00	0.00
4,040.0	24.36	204.63	3,805.8	-1,065.1	-488.2	1,171.6	0.00	0.00	0.00
4,080.0	24.36	204.63	3,842.2	-1,080.1	-495.1	1,188.1	0.00	0.00	0.00
4,120.0	24.36	204.63	3,878.7	-1,095.1	-502.0	1,204.6	0.00	0.00	0.00
4,160.0	24.36	204.63	3,915.1	-1,110.1	-508.9	1,221.1	0.00	0.00	0.00
4,200.0	24.36	204.63	3,951.5	-1,125.1	-515.7	1,237.6	0.00	0.00	0.00
4,240.0	24.36	204.63	3,988.0	-1,140.1	-522.6	1,254.1	0.00	0.00	0.00

Database:	EDM den0-adp01 Server Data	Local Co-ordinate Reference:	Well RBF 11-22D
Company:	Synergy Resources	TVD Reference:	WELL @ 4793.0ft (Original Well Elev)
Project:	SEC.15-T6N-R67W	MD Reference:	WELL @ 4793.0ft (Original Well Elev)
Site:	RBF 24-15D Pad Sec.15-T6N-R67W	North Reference:	True
Well:	RBF 11-22D	Survey Calculation Method:	Minimum Curvature
Wellbore:	Wellbore #1		
Design:	Plan #2 (8-31-10)		

Planned Survey									
Measured Depth (ft)	Inclination (°)	Azimuth (°)	Vertical Depth (ft)	+N/-S (ft)	+E/-W (ft)	Vertical Section (ft)	Dogleg Rate (°/100ft)	Build Rate (°/100ft)	Turn Rate (°/100ft)
4,280.0	24.36	204.63	4,024.4	-1,155.1	-529.5	1,270.6	0.00	0.00	0.00
4,320.0	24.36	204.63	4,060.8	-1,170.1	-536.4	1,287.1	0.00	0.00	0.00
4,360.0	24.36	204.63	4,097.3	-1,185.1	-543.2	1,303.6	0.00	0.00	0.00
4,400.0	24.36	204.63	4,133.7	-1,200.1	-550.1	1,320.1	0.00	0.00	0.00
4,440.0	24.36	204.63	4,170.2	-1,215.1	-557.0	1,336.6	0.00	0.00	0.00
4,480.0	24.36	204.63	4,206.6	-1,230.1	-563.9	1,353.1	0.00	0.00	0.00
4,520.0	24.36	204.63	4,243.0	-1,245.1	-570.7	1,369.6	0.00	0.00	0.00
4,560.0	24.36	204.63	4,279.5	-1,260.0	-577.6	1,386.1	0.00	0.00	0.00
4,600.0	24.36	204.63	4,315.9	-1,275.0	-584.5	1,402.6	0.00	0.00	0.00
4,640.0	24.36	204.63	4,352.4	-1,290.0	-591.4	1,419.1	0.00	0.00	0.00
4,680.0	24.36	204.63	4,388.8	-1,305.0	-598.2	1,435.6	0.00	0.00	0.00
4,720.0	24.36	204.63	4,425.2	-1,320.0	-605.1	1,452.1	0.00	0.00	0.00
4,760.0	24.36	204.63	4,461.7	-1,335.0	-612.0	1,468.6	0.00	0.00	0.00
4,800.0	24.36	204.63	4,498.1	-1,350.0	-618.9	1,485.1	0.00	0.00	0.00
4,840.0	24.36	204.63	4,534.5	-1,365.0	-625.8	1,501.6	0.00	0.00	0.00
4,880.0	24.36	204.63	4,571.0	-1,380.0	-632.6	1,518.1	0.00	0.00	0.00
4,920.0	24.36	204.63	4,607.4	-1,395.0	-639.5	1,534.6	0.00	0.00	0.00
4,960.0	24.36	204.63	4,643.9	-1,410.0	-646.4	1,551.1	0.00	0.00	0.00
5,000.0	24.36	204.63	4,680.3	-1,425.0	-653.3	1,567.6	0.00	0.00	0.00
5,040.0	24.36	204.63	4,716.7	-1,440.0	-660.1	1,584.1	0.00	0.00	0.00
5,041.7	24.36	204.63	4,718.3	-1,440.7	-660.4	1,584.8	0.00	0.00	0.00
5,080.0	23.60	204.63	4,753.3	-1,454.8	-666.9	1,600.4	2.00	-2.00	0.00
5,120.0	22.80	204.63	4,790.0	-1,469.1	-673.5	1,616.2	2.00	-2.00	0.00
5,160.0	22.00	204.63	4,827.0	-1,483.0	-679.8	1,631.4	2.00	-2.00	0.00
5,200.0	21.20	204.63	4,864.2	-1,496.4	-686.0	1,646.1	2.00	-2.00	0.00
5,240.0	20.40	204.63	4,901.6	-1,509.3	-691.9	1,660.3	2.00	-2.00	0.00
5,280.0	19.60	204.63	4,939.2	-1,521.7	-697.6	1,674.0	2.00	-2.00	0.00
5,320.0	18.80	204.63	4,977.0	-1,533.7	-703.1	1,687.2	2.00	-2.00	0.00
5,360.0	18.00	204.63	5,014.9	-1,545.2	-708.3	1,699.8	2.00	-2.00	0.00
5,400.0	17.20	204.63	5,053.1	-1,556.2	-713.4	1,711.9	2.00	-2.00	0.00
5,440.0	16.40	204.63	5,091.4	-1,566.7	-718.2	1,723.4	2.00	-2.00	0.00
5,480.0	15.60	204.63	5,129.8	-1,576.7	-722.8	1,734.4	2.00	-2.00	0.00
5,520.0	14.80	204.63	5,168.4	-1,586.2	-727.1	1,744.9	2.00	-2.00	0.00
5,560.0	14.00	204.63	5,207.1	-1,595.3	-731.3	1,754.9	2.00	-2.00	0.00
5,600.0	13.20	204.63	5,246.0	-1,603.8	-735.2	1,764.3	2.00	-2.00	0.00
5,640.0	12.40	204.63	5,285.0	-1,611.9	-738.9	1,773.1	2.00	-2.00	0.00
5,680.0	11.60	204.63	5,324.2	-1,619.4	-742.4	1,781.5	2.00	-2.00	0.00
5,720.0	10.80	204.63	5,363.4	-1,626.5	-745.6	1,789.2	2.00	-2.00	0.00
5,760.0	10.00	204.63	5,402.7	-1,633.0	-748.6	1,796.4	2.00	-2.00	0.00
5,800.0	9.20	204.63	5,442.2	-1,639.1	-751.4	1,803.1	2.00	-2.00	0.00
5,840.0	8.40	204.63	5,481.7	-1,644.7	-753.9	1,809.2	2.00	-2.00	0.00
5,880.0	7.60	204.63	5,521.3	-1,649.7	-756.2	1,814.8	2.00	-2.00	0.00
5,920.0	6.80	204.63	5,561.0	-1,654.3	-758.3	1,819.8	2.00	-2.00	0.00
5,960.0	6.00	204.63	5,600.8	-1,658.3	-760.2	1,824.3	2.00	-2.00	0.00
6,000.0	5.20	204.63	5,640.6	-1,661.9	-761.8	1,828.2	2.00	-2.00	0.00
6,040.0	4.40	204.63	5,680.4	-1,664.9	-763.2	1,831.5	2.00	-2.00	0.00
6,080.0	3.60	204.63	5,720.3	-1,667.4	-764.4	1,834.3	2.00	-2.00	0.00
6,120.0	2.80	204.63	5,760.3	-1,669.5	-765.3	1,836.5	2.00	-2.00	0.00
6,160.0	2.00	204.63	5,800.2	-1,671.0	-766.0	1,838.2	2.00	-2.00	0.00
6,200.0	1.20	204.63	5,840.2	-1,672.0	-766.5	1,839.3	2.00	-2.00	0.00
6,240.0	0.40	204.63	5,880.2	-1,672.5	-766.7	1,839.9	2.00	-2.00	0.00
6,259.8	0.00	0.00	5,900.0	-1,672.6	-766.7	1,839.9	2.00	-2.00	0.00
TARGET BHL 600'FNL, 600'FWL									

Database:	EDM den0-adp01 Server Data	Local Co-ordinate Reference:	Well RBF 11-22D
Company:	Synergy Resources	TVD Reference:	WELL @ 4793.0ft (Original Well Elev)
Project:	SEC.15-T6N-R67W	MD Reference:	WELL @ 4793.0ft (Original Well Elev)
Site:	RBF 24-15D Pad Sec.15-T6N-R67W	North Reference:	True
Well:	RBF 11-22D	Survey Calculation Method:	Minimum Curvature
Wellbore:	Wellbore #1		
Design:	Plan #2 (8-31-10)		

Planned Survey									
Measured Depth (ft)	Inclination (°)	Azimuth (°)	Vertical Depth (ft)	+N/-S (ft)	+E/-W (ft)	Vertical Section (ft)	Dogleg Rate (°/100ft)	Build Rate (°/100ft)	Turn Rate (°/100ft)
6,280.0	0.00	0.00	5,920.2	-1,672.6	-766.7	1,839.9	0.00	0.00	0.00
6,320.0	0.00	0.00	5,960.2	-1,672.6	-766.7	1,839.9	0.00	0.00	0.00
6,360.0	0.00	0.00	6,000.2	-1,672.6	-766.7	1,839.9	0.00	0.00	0.00
6,400.0	0.00	0.00	6,040.2	-1,672.6	-766.7	1,839.9	0.00	0.00	0.00
6,440.0	0.00	0.00	6,080.2	-1,672.6	-766.7	1,839.9	0.00	0.00	0.00
6,480.0	0.00	0.00	6,120.2	-1,672.6	-766.7	1,839.9	0.00	0.00	0.00
6,520.0	0.00	0.00	6,160.2	-1,672.6	-766.7	1,839.9	0.00	0.00	0.00
6,560.0	0.00	0.00	6,200.2	-1,672.6	-766.7	1,839.9	0.00	0.00	0.00
6,600.0	0.00	0.00	6,240.2	-1,672.6	-766.7	1,839.9	0.00	0.00	0.00
6,640.0	0.00	0.00	6,280.2	-1,672.6	-766.7	1,839.9	0.00	0.00	0.00
6,680.0	0.00	0.00	6,320.2	-1,672.6	-766.7	1,839.9	0.00	0.00	0.00
6,720.0	0.00	0.00	6,360.2	-1,672.6	-766.7	1,839.9	0.00	0.00	0.00
6,760.0	0.00	0.00	6,400.2	-1,672.6	-766.7	1,839.9	0.00	0.00	0.00
6,800.0	0.00	0.00	6,440.2	-1,672.6	-766.7	1,839.9	0.00	0.00	0.00
6,840.0	0.00	0.00	6,480.2	-1,672.6	-766.7	1,839.9	0.00	0.00	0.00
6,880.0	0.00	0.00	6,520.2	-1,672.6	-766.7	1,839.9	0.00	0.00	0.00
6,920.0	0.00	0.00	6,560.2	-1,672.6	-766.7	1,839.9	0.00	0.00	0.00
6,960.0	0.00	0.00	6,600.2	-1,672.6	-766.7	1,839.9	0.00	0.00	0.00
7,000.0	0.00	0.00	6,640.2	-1,672.6	-766.7	1,839.9	0.00	0.00	0.00
7,040.0	0.00	0.00	6,680.2	-1,672.6	-766.7	1,839.9	0.00	0.00	0.00
7,059.8	0.00	0.00	6,700.0	-1,672.6	-766.7	1,839.9	0.00	0.00	0.00
TARGET BOX 400' X 400' 658'FNL, 653'FWL									
7,080.0	0.00	0.00	6,720.2	-1,672.6	-766.7	1,839.9	0.00	0.00	0.00
7,120.0	0.00	0.00	6,760.2	-1,672.6	-766.7	1,839.9	0.00	0.00	0.00
7,160.0	0.00	0.00	6,800.2	-1,672.6	-766.7	1,839.9	0.00	0.00	0.00
7,200.0	0.00	0.00	6,840.2	-1,672.6	-766.7	1,839.9	0.00	0.00	0.00
7,240.0	0.00	0.00	6,880.2	-1,672.6	-766.7	1,839.9	0.00	0.00	0.00
7,280.0	0.00	0.00	6,920.2	-1,672.6	-766.7	1,839.9	0.00	0.00	0.00
7,320.0	0.00	0.00	6,960.2	-1,672.6	-766.7	1,839.9	0.00	0.00	0.00
7,360.0	0.00	0.00	7,000.2	-1,672.6	-766.7	1,839.9	0.00	0.00	0.00
7,400.0	0.00	0.00	7,040.2	-1,672.6	-766.7	1,839.9	0.00	0.00	0.00
7,440.0	0.00	0.00	7,080.2	-1,672.6	-766.7	1,839.9	0.00	0.00	0.00
7,480.0	0.00	0.00	7,120.2	-1,672.6	-766.7	1,839.9	0.00	0.00	0.00
7,520.0	0.00	0.00	7,160.2	-1,672.6	-766.7	1,839.9	0.00	0.00	0.00
7,560.0	0.00	0.00	7,200.2	-1,672.6	-766.7	1,839.9	0.00	0.00	0.00
7,600.0	0.00	0.00	7,240.2	-1,672.6	-766.7	1,839.9	0.00	0.00	0.00
7,640.0	0.00	0.00	7,280.2	-1,672.6	-766.7	1,839.9	0.00	0.00	0.00
7,680.0	0.00	0.00	7,320.2	-1,672.6	-766.7	1,839.9	0.00	0.00	0.00
7,720.0	0.00	0.00	7,360.2	-1,672.6	-766.7	1,839.9	0.00	0.00	0.00
7,760.0	0.00	0.00	7,400.2	-1,672.6	-766.7	1,839.9	0.00	0.00	0.00
7,800.0	0.00	0.00	7,440.2	-1,672.6	-766.7	1,839.9	0.00	0.00	0.00
7,840.0	0.00	0.00	7,480.2	-1,672.6	-766.7	1,839.9	0.00	0.00	0.00
7,880.0	0.00	0.00	7,520.2	-1,672.6	-766.7	1,839.9	0.00	0.00	0.00
7,920.0	0.00	0.00	7,560.2	-1,672.6	-766.7	1,839.9	0.00	0.00	0.00
7,960.0	0.00	0.00	7,600.2	-1,672.6	-766.7	1,839.9	0.00	0.00	0.00
8,000.0	0.00	0.00	7,640.2	-1,672.6	-766.7	1,839.9	0.00	0.00	0.00
8,040.0	0.00	0.00	7,680.2	-1,672.6	-766.7	1,839.9	0.00	0.00	0.00
8,080.0	0.00	0.00	7,720.2	-1,672.6	-766.7	1,839.9	0.00	0.00	0.00
8,120.0	0.00	0.00	7,760.2	-1,672.6	-766.7	1,839.9	0.00	0.00	0.00
8,139.8	0.00	0.00	7,780.0	-1,672.6	-766.7	1,839.9	0.00	0.00	0.00

Database:	EDM den0-adp01 Server Data	Local Co-ordinate Reference:	Well RBF 11-22D
Company:	Synergy Resources	TVD Reference:	WELL @ 4793.0ft (Original Well Elev)
Project:	SEC.15-T6N-R67W	MD Reference:	WELL @ 4793.0ft (Original Well Elev)
Site:	RBF 24-15D Pad Sec.15-T6N-R67W	North Reference:	True
Well:	RBF 11-22D	Survey Calculation Method:	Minimum Curvature
Wellbore:	Wellbore #1		
Design:	Plan #2 (8-31-10)		

Targets									
Target Name									
- hit/miss target	Dip Angle	Dip Dir.	TVD	+N/-S	+E/-W	Northing	Easting	Latitude	Longitude
- Shape	(°)	(°)	(ft)	(ft)	(ft)	(ft)	(ft)		
TARGET BHL 600'FN	0.00	0.00	5,900.0	-1,672.6	-766.7	1,417,557.39	3,170,554.71	40° 28' 40.721 N	104° 53' 12.869 W
- plan hits target center									
- Point									
TARGET BOX 400' X	0.00	0.00	6,700.0	-1,703.6	-713.7	1,417,526.72	3,170,607.94	40° 28' 40.414 N	104° 53' 12.183 W
- plan misses target center by 61.4ft at 7059.8ft MD (6700.0 TVD, -1672.6 N, -766.7 E)									
- Rectangle (sides W400.0 H400.0 D1,080.0)									



Synergy Resources

SEC.15-T6N-R67W

RBF 24-15D Pad Sec.15-T6N-R67W

RBF 11-22D

Wellbore #1

Plan #2 (8-31-10)

Anticollision Report

31 August, 2010

Company:	Synergy Resources	Local Co-ordinate Reference:	Well RBF 11-22D
Project:	SEC.15-T6N-R67W	TVD Reference:	WELL @ 4793.0ft (Original Well Elev)
Reference Site:	RBF 24-15D Pad Sec.15-T6N-R67W	MD Reference:	WELL @ 4793.0ft (Original Well Elev)
Site Error:	0.0ft	North Reference:	True
Reference Well:	RBF 11-22D	Survey Calculation Method:	Minimum Curvature
Well Error:	0.0ft	Output errors are at	2.00 sigma
Reference Wellbore	Wellbore #1	Database:	EDM den0-adp01 Server Data
Reference Design:	Plan #2 (8-31-10)	Offset TVD Reference:	Offset Datum

Reference	Plan #2 (8-31-10)		
Filter type:	NO GLOBAL FILTER: Using user defined selection & filtering criteria		
Interpolation Method:	MD Interval 100.0ft	Error Model:	ISCWSA
Depth Range:	Unlimited	Scan Method:	Closest Approach 3D
Results Limited by:	Maximum center-center distance of 2,000.0ft	Error Surface:	Elliptical Conic
Warning Levels Evaluated at:	2.00 Sigma		

Survey Tool Program		Date	8/31/2010		
From (ft)	To (ft)	Survey (Wellbore)	Tool Name	Description	
0.0	8,139.8	Plan #2 (8-31-10) (Wellbore #1)	MWD	MWD - Standard	

Summary						
Site Name	Reference Measured Depth (ft)	Offset Measured Depth (ft)	Distance Between Centres (ft)	Distance Between Ellipses (ft)	Separation Factor	Warning
Offset Well - Wellbore - Design						
RBF 24-15D Pad Sec.15-T6N-R67W						
RBF 14-15D - Wellbore #1 - Plan #2 (8-31-10)	600.0	601.0	40.1	37.6	16.193	CC, ES
RBF 14-15D - Wellbore #1 - Plan #2 (8-31-10)	800.0	800.8	46.5	43.2	14.050	SF
RBF 24-15D - Wellbore #1 - Plan #3 (8-31-10)	600.0	600.0	20.0	17.6	8.102	CC, ES
RBF 24-15D - Wellbore #1 - Plan #3 (8-31-10)	700.0	700.0	21.6	18.7	7.462	SF

RBF 24-15D Pad Sec.15-T6N-R67W - RBF 14-15D - Wellbore #1 - Plan #2 (8-31-10)													Offset Site Error: 0.0 ft	
Offset Design				Survey Program: 0-MWD									Offset Well Error: 0.0 ft	
Reference		Offset		Semi Major Axis			Distance							
Measured Depth (ft)	Vertical Depth (ft)	Measured Depth (ft)	Vertical Depth (ft)	Reference (ft)	Offset (ft)	Highside Toolface (°)	Offset Wellbore Centre +N/-S (ft)	+E/-W (ft)	Between Centres (ft)	Between Ellipses (ft)	Minimum Separation (ft)	Separation Factor	Warning	
0.0	0.0	1.0	1.0	0.0	0.0	-0.40	40.1	-0.3	40.1	40.1	0.00	N/A		
100.0	100.0	101.0	101.0	0.1	0.1	-0.40	40.1	-0.3	40.1	39.8	0.23	176.517		
200.0	200.0	201.0	201.0	0.3	0.3	-0.40	40.1	-0.3	40.1	39.4	0.68	59.230		
300.0	300.0	301.0	301.0	0.6	0.6	-0.40	40.1	-0.3	40.1	38.9	1.13	35.585		
400.0	400.0	401.0	401.0	0.8	0.8	-0.40	40.1	-0.3	40.1	38.5	1.58	25.433		
500.0	500.0	501.0	501.0	1.0	1.0	-0.40	40.1	-0.3	40.1	38.0	2.03	19.787		
600.0	600.0	601.0	601.0	1.2	1.2	-0.40	40.1	-0.3	40.1	37.6	2.47	16.193	CC, ES	
700.0	700.0	701.0	701.0	1.4	1.5	155.98	40.1	-0.3	41.7	38.8	2.90	14.368		
800.0	799.8	800.8	800.8	1.6	1.7	158.57	40.1	-0.3	46.5	43.2	3.31	14.050	SF	
900.0	899.5	900.5	900.5	1.8	1.9	161.85	40.1	-0.3	54.7	51.0	3.73	14.675		
1,000.0	998.7	999.7	999.7	2.1	2.1	165.07	40.1	-0.3	66.4	62.2	4.15	15.994		
1,100.0	1,097.5	1,100.5	1,100.5	2.4	2.3	167.03	39.1	-1.7	80.3	75.8	4.56	17.626		
1,200.0	1,195.6	1,201.7	1,201.6	2.7	2.5	167.40	36.0	-6.1	95.1	90.2	4.95	19.204		
1,300.0	1,293.1	1,303.2	1,302.6	3.1	2.7	166.77	30.8	-13.4	110.8	105.4	5.37	20.610		
1,400.0	1,389.6	1,404.8	1,403.5	3.5	3.0	165.54	23.6	-23.6	127.2	121.4	5.83	21.833		
1,500.0	1,485.3	1,506.7	1,504.0	4.1	3.2	163.90	14.3	-36.8	144.5	138.2	6.32	22.856		
1,600.0	1,579.8	1,608.6	1,604.1	4.6	3.6	162.03	3.0	-52.9	162.8	155.9	6.88	23.656		
1,700.0	1,673.2	1,710.7	1,703.4	5.3	3.9	160.00	-10.5	-72.0	182.2	174.6	7.52	24.216		
1,800.0	1,765.2	1,810.4	1,799.8	6.0	4.4	158.03	-25.3	-93.0	202.9	194.7	8.25	24.609		
1,900.0	1,856.3	1,907.7	1,893.6	6.8	4.8	156.71	-40.0	-113.9	225.6	216.6	9.06	24.903		
2,000.0	1,947.4	2,005.0	1,987.5	7.5	5.3	155.67	-54.7	-134.7	248.5	238.6	9.92	25.050		
2,100.0	2,038.5	2,102.2	2,081.3	8.3	5.7	154.79	-69.4	-155.6	271.4	260.6	10.81	25.105		
2,200.0	2,129.6	2,199.5	2,175.2	9.1	6.2	154.06	-84.1	-176.4	294.4	282.7	11.73	25.105		

Company:	Synergy Resources	Local Co-ordinate Reference:	Well RBF 11-22D
Project:	SEC.15-T6N-R67W	TVD Reference:	WELL @ 4793.0ft (Original Well Elev)
Reference Site:	RBF 24-15D Pad Sec.15-T6N-R67W	MD Reference:	WELL @ 4793.0ft (Original Well Elev)
Site Error:	0.0ft	North Reference:	True
Reference Well:	RBF 11-22D	Survey Calculation Method:	Minimum Curvature
Well Error:	0.0ft	Output errors are at	2.00 sigma
Reference Wellbore	Wellbore #1	Database:	EDM den0-adp01 Server Data
Reference Design:	Plan #2 (8-31-10)	Offset TVD Reference:	Offset Datum

RBF 24-15D Pad Sec.15-T6N-R67W - RBF 14-15D - Wellbore #1 - Plan #2 (8-31-10)													Offset Site Error:	0.0 ft
Survey Program: 0-MWD													Offset Well Error:	0.0 ft
Reference		Offset		Semi Major Axis			Distance							Warning
Measured Depth (ft)	Vertical Depth (ft)	Measured Depth (ft)	Vertical Depth (ft)	Reference (ft)	Offset (ft)	Highside Toolface (°)	Offset Wellbore Centre +N/-S (ft)	+E/-W (ft)	Between Centres (ft)	Between Ellipses (ft)	Minimum Separation (ft)	Separation Factor		
2,300.0	2,220.7	2,296.7	2,269.1	9.9	6.7	153.43	-98.8	-197.3	317.5	304.8	12.66	25.070		
2,400.0	2,311.8	2,394.0	2,362.9	10.7	7.2	152.88	-113.5	-218.1	340.5	326.9	13.61	25.014		
2,500.0	2,402.9	2,491.3	2,456.8	11.5	7.7	152.41	-128.2	-239.0	363.6	349.0	14.58	24.946		
2,600.0	2,494.0	2,588.5	2,550.6	12.3	8.3	151.99	-142.9	-259.9	386.7	371.1	15.55	24.871		
2,700.0	2,585.1	2,685.8	2,644.5	13.1	8.8	151.62	-157.6	-280.7	409.8	393.3	16.53	24.793		
2,800.0	2,676.2	2,783.0	2,738.3	13.9	9.3	151.29	-172.3	-301.6	433.0	415.4	17.52	24.715		
2,900.0	2,767.3	2,880.3	2,832.2	14.8	9.8	150.99	-187.0	-322.4	456.1	437.6	18.51	24.637		
3,000.0	2,858.4	2,977.5	2,926.0	15.6	10.4	150.72	-201.7	-343.3	479.3	459.7	19.51	24.561		
3,100.0	2,949.5	3,074.8	3,019.9	16.4	10.9	150.48	-216.4	-364.1	502.4	481.9	20.52	24.488		
3,200.0	3,040.6	3,172.1	3,113.7	17.2	11.4	150.25	-231.1	-385.0	525.6	504.1	21.53	24.418		
3,300.0	3,131.7	3,269.3	3,207.6	18.0	12.0	150.05	-245.8	-405.8	548.8	526.2	22.54	24.350		
3,400.0	3,222.8	3,366.6	3,301.4	18.8	12.5	149.86	-260.5	-426.7	572.0	548.4	23.55	24.286		
3,500.0	3,313.9	3,463.8	3,395.3	19.7	13.0	149.69	-275.2	-447.6	595.2	570.6	24.57	24.224		
3,600.0	3,405.0	3,561.1	3,489.1	20.5	13.6	149.53	-289.9	-468.4	618.4	592.8	25.59	24.165		
3,700.0	3,496.1	3,658.4	3,583.0	21.3	14.1	149.38	-304.6	-489.3	641.6	614.9	26.61	24.110		
3,800.0	3,587.1	3,755.6	3,676.8	22.1	14.7	149.24	-319.3	-510.1	664.8	637.1	27.63	24.056		
3,900.0	3,678.2	3,852.9	3,770.7	22.9	15.2	149.11	-334.0	-531.0	688.0	659.3	28.66	24.006		
4,000.0	3,769.3	3,950.1	3,864.5	23.7	15.7	148.99	-348.7	-551.8	711.2	681.5	29.68	23.958		
4,100.0	3,860.4	4,047.4	3,958.4	24.6	16.3	148.88	-363.4	-572.7	734.4	703.7	30.71	23.912		
4,200.0	3,951.5	4,144.6	4,052.2	25.4	16.8	148.78	-378.1	-593.6	757.6	725.9	31.74	23.868		
4,300.0	4,042.6	4,241.9	4,146.1	26.2	17.4	148.68	-392.8	-614.4	780.8	748.1	32.77	23.826		
4,400.0	4,133.7	4,339.2	4,239.9	27.0	17.9	148.58	-407.5	-635.3	804.1	770.2	33.80	23.786		
4,500.0	4,224.8	4,436.4	4,333.8	27.8	18.4	148.49	-422.2	-656.1	827.3	792.4	34.84	23.748		
4,600.0	4,315.9	4,533.7	4,427.6	28.7	19.0	148.41	-436.9	-677.0	850.5	814.6	35.87	23.712		
4,700.0	4,407.0	4,630.9	4,521.5	29.5	19.5	148.33	-451.6	-697.8	873.7	836.8	36.90	23.677		
4,800.0	4,498.1	4,728.2	4,615.3	30.3	20.1	148.26	-466.3	-718.7	897.0	859.0	37.94	23.644		
4,900.0	4,589.2	4,825.5	4,709.2	31.1	20.6	148.18	-481.0	-739.5	920.2	881.2	38.97	23.612		
5,000.0	4,680.3	4,914.8	4,795.5	32.0	21.1	148.14	-494.2	-758.4	943.7	903.7	39.91	23.642		
5,100.0	4,771.6	5,000.0	4,878.4	32.7	21.4	148.37	-505.6	-774.5	967.9	927.2	40.69	23.785		
5,200.0	4,864.2	5,081.3	4,958.1	33.2	21.7	148.72	-515.1	-788.0	990.9	949.6	41.32	23.979		
5,300.0	4,958.1	5,164.5	5,040.0	33.8	21.9	149.07	-523.5	-799.9	1,012.4	970.5	41.89	24.169		
5,400.0	5,053.1	5,247.7	5,122.2	34.2	22.1	149.44	-530.5	-809.8	1,032.4	990.0	42.38	24.362		
5,500.0	5,149.1	5,330.7	5,204.6	34.7	22.3	149.82	-536.1	-817.8	1,050.9	1,008.1	42.79	24.560		
5,600.0	5,246.0	5,413.6	5,287.3	35.0	22.5	150.20	-540.4	-823.8	1,067.9	1,024.8	43.12	24.764		
5,700.0	5,343.8	5,500.0	5,373.5	35.4	22.7	150.60	-543.3	-828.0	1,083.3	1,040.0	43.37	24.977		
5,800.0	5,442.2	5,579.1	5,452.6	35.7	22.8	150.99	-544.7	-830.0	1,097.2	1,053.7	43.54	25.203		
5,900.0	5,541.2	5,668.7	5,542.2	35.9	22.8	151.41	-544.9	-830.3	1,109.5	1,065.9	43.63	25.428		
6,000.0	5,640.6	5,768.1	5,641.6	36.1	23.0	151.77	-544.9	-830.3	1,119.0	1,075.3	43.71	25.598		
6,100.0	5,740.3	5,867.9	5,741.3	36.3	23.1	152.00	-544.9	-830.3	1,125.5	1,081.7	43.80	25.698		
6,200.0	5,840.2	5,967.8	5,841.2	36.4	23.2	152.13	-544.9	-830.3	1,128.9	1,085.0	43.88	25.727		
6,300.0	5,940.2	6,067.8	5,941.2	36.5	23.3	-3.23	-544.9	-830.3	1,129.4	1,085.4	44.03	25.654		
6,400.0	6,040.2	6,167.8	6,041.2	36.6	23.4	-3.23	-544.9	-830.3	1,129.4	1,085.2	44.25	25.521		
6,500.0	6,140.2	6,267.8	6,141.2	36.6	23.5	-3.23	-544.9	-830.3	1,129.4	1,084.9	44.49	25.388		
6,600.0	6,240.2	6,367.8	6,241.2	36.7	23.6	-3.23	-544.9	-830.3	1,129.4	1,084.7	44.72	25.254		
6,700.0	6,340.2	6,467.8	6,341.2	36.7	23.7	-3.23	-544.9	-830.3	1,129.4	1,084.5	44.96	25.120		
6,800.0	6,440.2	6,567.8	6,441.2	36.8	23.9	-3.23	-544.9	-830.3	1,129.4	1,084.2	45.20	24.985		
6,900.0	6,540.2	6,667.8	6,541.2	36.9	24.0	-3.23	-544.9	-830.3	1,129.4	1,084.0	45.45	24.851		
7,000.0	6,640.2	6,767.8	6,641.2	37.0	24.1	-3.23	-544.9	-830.3	1,129.4	1,083.7	45.70	24.716		
7,100.0	6,740.2	6,867.8	6,741.2	37.0	24.2	-3.23	-544.9	-830.3	1,129.4	1,083.5	45.95	24.580		
7,200.0	6,840.2	6,967.8	6,841.2	37.1	24.3	-3.23	-544.9	-830.3	1,129.4	1,083.2	46.20	24.445		
7,300.0	6,940.2	7,067.8	6,941.2	37.2	24.5	-3.23	-544.9	-830.3	1,129.4	1,083.0	46.46	24.310		
7,400.0	7,040.2	7,167.8	7,041.2	37.2	24.6	-3.23	-544.9	-830.3	1,129.4	1,082.7	46.72	24.174		

Company:	Synergy Resources	Local Co-ordinate Reference:	Well RBF 11-22D
Project:	SEC.15-T6N-R67W	TVD Reference:	WELL @ 4793.0ft (Original Well Elev)
Reference Site:	RBF 24-15D Pad Sec.15-T6N-R67W	MD Reference:	WELL @ 4793.0ft (Original Well Elev)
Site Error:	0.0ft	North Reference:	True
Reference Well:	RBF 11-22D	Survey Calculation Method:	Minimum Curvature
Well Error:	0.0ft	Output errors are at	2.00 sigma
Reference Wellbore	Wellbore #1	Database:	EDM den0-adp01 Server Data
Reference Design:	Plan #2 (8-31-10)	Offset TVD Reference:	Offset Datum

Offset Design RBF 24-15D Pad Sec.15-T6N-R67W - RBF 14-15D - Wellbore #1 - Plan #2 (8-31-10)												Offset Site Error:	0.0 ft
Survey Program: 0-MWD												Offset Well Error:	0.0 ft
Reference		Offset		Semi Major Axis			Distance						
Measured Depth (ft)	Vertical Depth (ft)	Measured Depth (ft)	Vertical Depth (ft)	Reference (ft)	Offset (ft)	Highside Toolface (°)	Offset Wellbore Centre +N/-S (ft)	+E/-W (ft)	Between Centres (ft)	Between Ellipses (ft)	Minimum Separation (ft)	Separation Factor	Warning
7,500.0	7,140.2	7,267.8	7,141.2	37.3	24.7	-3.23	-544.9	-830.3	1,129.4	1,082.4	46.98	24.039	
7,600.0	7,240.2	7,367.8	7,241.2	37.4	24.8	-3.23	-544.9	-830.3	1,129.4	1,082.2	47.25	23.904	
7,700.0	7,340.2	7,467.8	7,341.2	37.5	25.0	-3.23	-544.9	-830.3	1,129.4	1,081.9	47.52	23.769	
7,800.0	7,440.2	7,567.8	7,441.2	37.6	25.1	-3.23	-544.9	-830.3	1,129.4	1,081.6	47.79	23.634	
7,900.0	7,540.2	7,667.8	7,541.2	37.6	25.2	-3.23	-544.9	-830.3	1,129.4	1,081.4	48.06	23.499	
8,000.0	7,640.2	7,767.8	7,641.2	37.7	25.4	-3.23	-544.9	-830.3	1,129.4	1,081.1	48.34	23.365	
8,100.0	7,740.2	7,867.8	7,741.2	37.8	25.5	-3.23	-544.9	-830.3	1,129.4	1,080.8	48.62	23.231	
8,126.2	7,766.4	7,894.0	7,767.4	37.8	25.6	-3.23	-544.9	-830.3	1,129.4	1,080.7	48.69	23.196	
8,139.8	7,780.0	7,906.6	7,780.0	37.8	25.6	-3.23	-544.9	-830.3	1,129.4	1,080.7	48.73	23.178	

Company:	Synergy Resources	Local Co-ordinate Reference:	Well RBF 11-22D
Project:	SEC.15-T6N-R67W	TVD Reference:	WELL @ 4793.0ft (Original Well Elev)
Reference Site:	RBF 24-15D Pad Sec.15-T6N-R67W	MD Reference:	WELL @ 4793.0ft (Original Well Elev)
Site Error:	0.0ft	North Reference:	True
Reference Well:	RBF 11-22D	Survey Calculation Method:	Minimum Curvature
Well Error:	0.0ft	Output errors are at	2.00 sigma
Reference Wellbore	Wellbore #1	Database:	EDM den0-adp01 Server Data
Reference Design:	Plan #2 (8-31-10)	Offset TVD Reference:	Offset Datum

RBF 24-15D Pad Sec.15-T6N-R67W - RBF 24-15D - Wellbore #1 - Plan #3 (8-31-10)													Offset Site Error:	0.0 ft
Offset Design				Survey Program: 0-MWD									Offset Well Error:	0.0 ft
Reference		Offset		Semi Major Axis			Distance							
Measured Depth (ft)	Vertical Depth (ft)	Measured Depth (ft)	Vertical Depth (ft)	Reference (ft)	Offset (ft)	Highside Toolface (°)	Offset Wellbore Centre +N/-S (ft)	+E/-W (ft)	Between Centres (ft)	Between Ellipses (ft)	Minimum Separation (ft)	Separation Factor	Warning	
0.0	0.0	0.0	0.0	0.0	0.0	-0.80	20.0	-0.3	20.0					
100.0	100.0	100.0	100.0	0.1	0.1	-0.80	20.0	-0.3	20.0	19.8	0.22	89.121		
200.0	200.0	200.0	200.0	0.3	0.3	-0.80	20.0	-0.3	20.0	19.4	0.67	29.707		
300.0	300.0	300.0	300.0	0.6	0.6	-0.80	20.0	-0.3	20.0	18.9	1.12	17.824		
400.0	400.0	400.0	400.0	0.8	0.8	-0.80	20.0	-0.3	20.0	18.5	1.57	12.732		
500.0	500.0	500.0	500.0	1.0	1.0	-0.80	20.0	-0.3	20.0	18.0	2.02	9.902		
600.0	600.0	600.0	600.0	1.2	1.2	-0.80	20.0	-0.3	20.0	17.6	2.47	8.102 CC, ES		
700.0	700.0	700.0	700.0	1.4	1.5	156.55	20.0	-0.3	21.6	18.7	2.90	7.462 SF		
800.0	799.8	799.8	799.8	1.6	1.7	161.02	20.0	-0.3	26.5	23.2	3.31	8.016		
900.0	899.5	899.9	899.9	1.8	1.9	168.30	19.0	1.1	34.1	30.4	3.70	9.220		
1,000.0	998.7	999.6	999.5	2.1	2.1	177.67	15.9	5.3	44.6	40.5	4.09	10.902		
1,100.0	1,097.5	1,098.6	1,098.0	2.4	2.3	-173.45	10.8	12.2	58.8	54.3	4.50	13.057		
1,200.0	1,195.6	1,196.6	1,195.3	2.7	2.5	-166.05	3.7	21.7	77.2	72.3	4.96	15.576		
1,300.0	1,293.1	1,293.3	1,290.9	3.1	2.8	-160.17	-5.2	33.8	100.0	94.6	5.47	18.284		
1,400.0	1,389.6	1,388.5	1,384.4	3.5	3.1	-155.54	-15.8	48.1	127.2	121.1	6.05	21.008		
1,500.0	1,485.3	1,482.1	1,475.6	4.1	3.4	-151.85	-28.1	64.7	158.5	151.8	6.71	23.623		
1,600.0	1,579.8	1,574.5	1,565.2	4.6	3.8	-148.94	-41.7	83.1	193.8	186.4	7.44	26.052		
1,700.0	1,673.2	1,666.7	1,654.4	5.3	4.3	-147.11	-55.6	101.8	232.2	224.0	8.21	28.270		
1,800.0	1,765.2	1,757.8	1,742.6	6.0	4.7	-146.06	-69.3	120.3	273.4	264.4	9.03	30.289		
1,900.0	1,856.3	1,848.1	1,830.0	6.8	5.1	-145.82	-82.8	138.6	316.3	306.4	9.88	32.001		
2,000.0	1,947.4	1,938.4	1,917.3	7.5	5.6	-145.71	-96.4	156.9	359.3	348.5	10.78	33.337		
2,100.0	2,038.5	2,028.7	2,004.7	8.3	6.0	-145.63	-110.0	175.2	402.3	390.6	11.69	34.423		
2,200.0	2,129.6	2,119.0	2,092.1	9.1	6.5	-145.56	-123.5	193.5	445.2	432.6	12.61	35.316		
2,300.0	2,220.7	2,209.3	2,179.5	9.9	7.0	-145.50	-137.1	211.8	488.2	474.7	13.54	36.060		
2,400.0	2,311.8	2,299.6	2,266.8	10.7	7.4	-145.46	-150.7	230.1	531.2	516.7	14.48	36.687		
2,500.0	2,402.9	2,389.9	2,354.2	11.5	7.9	-145.42	-164.2	248.4	574.2	558.7	15.43	37.220		
2,600.0	2,494.0	2,480.2	2,441.6	12.3	8.4	-145.38	-177.8	266.7	617.1	600.8	16.38	37.678		
2,700.0	2,585.1	2,570.5	2,528.9	13.1	8.9	-145.35	-191.4	285.1	660.1	642.8	17.34	38.076		
2,800.0	2,676.2	2,660.8	2,616.3	13.9	9.3	-145.33	-204.9	303.4	703.1	684.8	18.30	38.424		
2,900.0	2,767.3	2,751.1	2,703.7	14.8	9.8	-145.30	-218.5	321.7	746.1	726.8	19.26	38.730		
3,000.0	2,858.4	2,841.4	2,791.1	15.6	10.3	-145.28	-232.1	340.0	789.0	768.8	20.23	39.001		
3,100.0	2,949.5	2,931.7	2,878.4	16.4	10.8	-145.26	-245.6	358.3	832.0	810.8	21.20	39.243		
3,200.0	3,040.6	3,022.0	2,965.8	17.2	11.3	-145.25	-259.2	376.6	875.0	852.8	22.17	39.459		
3,300.0	3,131.7	3,112.3	3,053.2	18.0	11.8	-145.23	-272.7	394.9	918.0	894.8	23.15	39.654		
3,400.0	3,222.8	3,202.6	3,140.5	18.8	12.3	-145.22	-286.3	413.2	960.9	936.8	24.13	39.830		
3,500.0	3,313.9	3,292.9	3,227.9	19.7	12.7	-145.21	-299.9	431.5	1,003.9	978.8	25.10	39.990		
3,600.0	3,405.0	3,383.2	3,315.3	20.5	13.2	-145.20	-313.4	449.9	1,046.9	1,020.8	26.08	40.136		
3,700.0	3,496.1	3,473.4	3,402.7	21.3	13.7	-145.18	-327.0	468.2	1,089.9	1,062.8	27.06	40.270		
3,800.0	3,587.1	3,563.7	3,490.0	22.1	14.2	-145.18	-340.6	486.5	1,132.9	1,104.8	28.05	40.392		
3,900.0	3,678.2	3,654.0	3,577.4	22.9	14.7	-145.17	-354.1	504.8	1,175.8	1,146.8	29.03	40.505		
4,000.0	3,769.3	3,744.3	3,664.8	23.7	15.2	-145.16	-367.7	523.1	1,218.8	1,188.8	30.01	40.610		
4,100.0	3,860.4	3,834.6	3,752.1	24.6	15.7	-145.15	-381.3	541.4	1,261.8	1,230.8	31.00	40.706		
4,200.0	3,951.5	3,924.9	3,839.5	25.4	16.2	-145.14	-394.8	559.7	1,304.8	1,272.8	31.98	40.796		
4,300.0	4,042.6	4,015.2	3,926.9	26.2	16.7	-145.14	-408.4	578.0	1,347.7	1,314.8	32.97	40.879		
4,400.0	4,133.7	4,105.5	4,014.3	27.0	17.2	-145.13	-422.0	596.3	1,390.7	1,356.8	33.96	40.957		
4,500.0	4,224.8	4,195.8	4,101.6	27.8	17.6	-145.12	-435.5	614.7	1,433.7	1,398.7	34.94	41.030		
4,600.0	4,315.9	4,286.1	4,189.0	28.7	18.1	-145.12	-449.1	633.0	1,476.7	1,440.7	35.93	41.097		
4,700.0	4,407.0	4,376.4	4,276.4	29.5	18.6	-145.11	-462.7	651.3	1,519.6	1,482.7	36.92	41.161		
4,800.0	4,498.1	4,487.1	4,384.0	30.3	19.1	-145.19	-478.1	672.1	1,562.0	1,524.2	37.85	41.274		
4,900.0	4,589.2	4,599.0	4,493.7	31.1	19.4	-145.12	-491.1	689.7	1,603.2	1,564.5	38.69	41.442		
5,000.0	4,680.3	4,711.7	4,605.0	32.0	19.8	-145.79	-501.7	703.9	1,643.2	1,603.8	39.45	41.658		
5,100.0	4,771.6	4,825.0	4,717.5	32.7	20.0	-146.55	-509.7	714.7	1,681.7	1,641.5	40.16	41.873		

CC - Min centre to center distance or convergent point, SF - min separation factor, ES - min ellipse separation

Company:	Synergy Resources	Local Co-ordinate Reference:	Well RBF 11-22D
Project:	SEC.15-T6N-R67W	TVD Reference:	WELL @ 4793.0ft (Original Well Elev)
Reference Site:	RBF 24-15D Pad Sec.15-T6N-R67W	MD Reference:	WELL @ 4793.0ft (Original Well Elev)
Site Error:	0.0ft	North Reference:	True
Reference Well:	RBF 11-22D	Survey Calculation Method:	Minimum Curvature
Well Error:	0.0ft	Output errors are at	2.00 sigma
Reference Wellbore	Wellbore #1	Database:	EDM den0-adp01 Server Data
Reference Design:	Plan #2 (8-31-10)	Offset TVD Reference:	Offset Datum

Offset Design													Offset Site Error:	
Survey Program: 0-MWD													Offset Well Error:	
Reference		Offset		Semi Major Axis			Distance						Warning	
Measured Depth (ft)	Vertical Depth (ft)	Measured Depth (ft)	Vertical Depth (ft)	Reference (ft)	Offset (ft)	Highside Toolface (°)	Offset Wellbore Centre +N/-S (ft)	+E/-W (ft)	Between Centres (ft)	Between Ellipses (ft)	Minimum Separation (ft)	Separation Factor		
5,200.0	4,864.2	4,939.9	4,832.1	33.2	20.3	-147.50	-515.0	722.0	1,716.5	1,675.7	40.75	42.120		
5,300.0	4,958.1	5,056.2	4,948.2	33.8	20.4	-148.44	-517.7	725.5	1,747.4	1,706.2	41.25	42.358		
5,400.0	5,053.1	5,161.0	5,053.1	34.2	20.5	-149.29	-518.0	725.9	1,774.6	1,733.0	41.68	42.577		
5,500.0	5,149.1	5,257.0	5,149.1	34.7	20.6	-149.99	-518.0	725.9	1,799.0	1,756.9	42.07	42.761		
5,600.0	5,246.0	5,354.0	5,246.0	35.0	20.8	-150.59	-518.0	725.9	1,820.4	1,778.0	42.43	42.906		
5,700.0	5,343.8	5,451.7	5,343.8	35.4	20.9	-151.10	-518.0	725.9	1,839.0	1,796.2	42.75	43.013		
5,800.0	5,442.2	5,550.1	5,442.2	35.7	21.0	-151.51	-518.0	725.9	1,854.5	1,811.5	43.05	43.082		
5,900.0	5,541.2	5,649.1	5,541.2	35.9	21.1	-151.84	-518.0	725.9	1,867.1	1,823.8	43.31	43.115		
6,000.0	5,640.6	5,748.5	5,640.6	36.1	21.2	-152.09	-518.0	725.9	1,876.7	1,833.1	43.53	43.113		
6,100.0	5,740.3	5,848.2	5,740.3	36.3	21.3	-152.25	-518.0	725.9	1,883.1	1,839.4	43.72	43.075		
6,200.0	5,840.2	5,948.2	5,840.2	36.4	21.4	-152.34	-518.0	725.9	1,886.5	1,842.7	43.87	43.002		
6,300.0	5,940.2	6,048.2	5,940.2	36.5	21.6	52.28	-518.0	725.9	1,887.1	1,843.0	44.04	42.845		
6,400.0	6,040.2	6,148.2	6,040.2	36.6	21.7	52.28	-518.0	725.9	1,887.1	1,842.8	44.27	42.630		
6,500.0	6,140.2	6,248.2	6,140.2	36.6	21.8	52.28	-518.0	725.9	1,887.1	1,842.6	44.49	42.413		
6,600.0	6,240.2	6,348.2	6,240.2	36.7	21.9	52.28	-518.0	725.9	1,887.1	1,842.4	44.72	42.196		
6,700.0	6,340.2	6,448.2	6,340.2	36.7	22.1	52.28	-518.0	725.9	1,887.1	1,842.1	44.95	41.978		
6,800.0	6,440.2	6,548.2	6,440.2	36.8	22.2	52.28	-518.0	725.9	1,887.1	1,841.9	45.19	41.759		
6,900.0	6,540.2	6,648.2	6,540.2	36.9	22.3	52.28	-518.0	725.9	1,887.1	1,841.7	45.43	41.539		
7,000.0	6,640.2	6,748.2	6,640.2	37.0	22.4	52.28	-518.0	725.9	1,887.1	1,841.4	45.67	41.318		
7,100.0	6,740.2	6,848.2	6,740.2	37.0	22.6	52.28	-518.0	725.9	1,887.1	1,841.2	45.92	41.098		
7,200.0	6,840.2	6,948.2	6,840.2	37.1	22.7	52.28	-518.0	725.9	1,887.1	1,840.9	46.17	40.877		
7,300.0	6,940.2	7,048.2	6,940.2	37.2	22.9	52.28	-518.0	725.9	1,887.1	1,840.7	46.42	40.655		
7,400.0	7,040.2	7,148.2	7,040.2	37.2	23.0	52.28	-518.0	725.9	1,887.1	1,840.4	46.67	40.434		
7,500.0	7,140.2	7,248.2	7,140.2	37.3	23.1	52.28	-518.0	725.9	1,887.1	1,840.2	46.93	40.212		
7,600.0	7,240.2	7,348.2	7,240.2	37.4	23.3	52.28	-518.0	725.9	1,887.1	1,839.9	47.19	39.990		
7,700.0	7,340.2	7,448.2	7,340.2	37.5	23.4	52.28	-518.0	725.9	1,887.1	1,839.6	47.45	39.769		
7,800.0	7,440.2	7,548.2	7,440.2	37.6	23.6	52.28	-518.0	725.9	1,887.1	1,839.4	47.72	39.547		
7,900.0	7,540.2	7,648.2	7,540.2	37.6	23.7	52.28	-518.0	725.9	1,887.1	1,839.1	47.99	39.326		
8,000.0	7,640.2	7,748.2	7,640.2	37.7	23.8	52.28	-518.0	725.9	1,887.1	1,838.8	48.26	39.105		
8,100.0	7,740.2	7,848.2	7,740.2	37.8	24.0	52.28	-518.0	725.9	1,887.1	1,838.6	48.53	38.884		
8,139.8	7,780.0	7,887.9	7,780.0	37.8	24.0	52.28	-518.0	725.9	1,887.1	1,838.4	48.64	38.797		

Company:	Synergy Resources	Local Co-ordinate Reference:	Well RBF 11-22D
Project:	SEC.15-T6N-R67W	TVD Reference:	WELL @ 4793.0ft (Original Well Elev)
Reference Site:	RBF 24-15D Pad Sec.15-T6N-R67W	MD Reference:	WELL @ 4793.0ft (Original Well Elev)
Site Error:	0.0ft	North Reference:	True
Reference Well:	RBF 11-22D	Survey Calculation Method:	Minimum Curvature
Well Error:	0.0ft	Output errors are at	2.00 sigma
Reference Wellbore	Wellbore #1	Database:	EDM den0-adp01 Server Data
Reference Design:	Plan #2 (8-31-10)	Offset TVD Reference:	Offset Datum

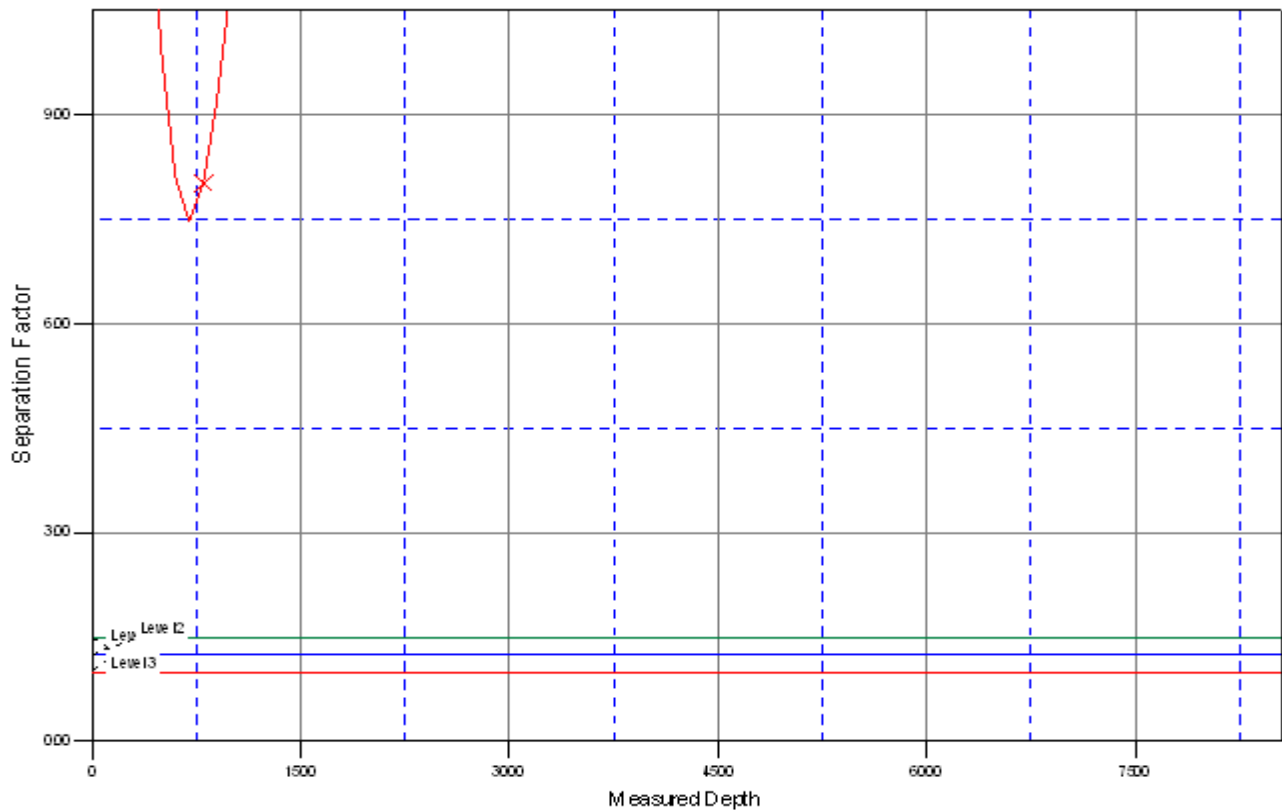
Reference Depths are relative to WELL @ 4793.0ft (Original Well Elev) Coordinates are relative to: RBF 11-22D
Offset Depths are relative to Offset Datum Coordinate System is US State Plane 1983, Colorado Northern Zone
Central Meridian is 105° 30' 0.000 W ° Grid Convergence at Surface is: 0.40°



Company:	Synergy Resources	Local Co-ordinate Reference:	Well RBF 11-22D
Project:	SEC.15-T6N-R67W	TVD Reference:	WELL @ 4793.0ft (Original Well Elev)
Reference Site:	RBF 24-15D Pad Sec.15-T6N-R67W	MD Reference:	WELL @ 4793.0ft (Original Well Elev)
Site Error:	0.0ft	North Reference:	True
Reference Well:	RBF 11-22D	Survey Calculation Method:	Minimum Curvature
Well Error:	0.0ft	Output errors are at	2.00 sigma
Reference Wellbore	Wellbore #1	Database:	EDM den0-adp01 Server Data
Reference Design:	Plan #2 (8-31-10)	Offset TVD Reference:	Offset Datum

Reference Depths are relative to WELL @ 4793.0ft (Original Well Elev) Coordinates are relative to: RBF 11-22D
Offset Depths are relative to Offset Datum Coordinate System is US State Plane 1983, Colorado Northern Zone
Central Meridian is 105° 30' 0.000 W ° Grid Convergence at Surface is: 0.40°

Separation Factor Plot



LEGEND

✗ RBF 24-15 D, Wellbore #1, Plan #3 (8-31-10) \V0 ➤ RBF 14-15 D, Wellbore #1, Plan #2 (8-31-10) \V0