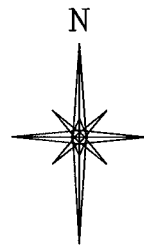
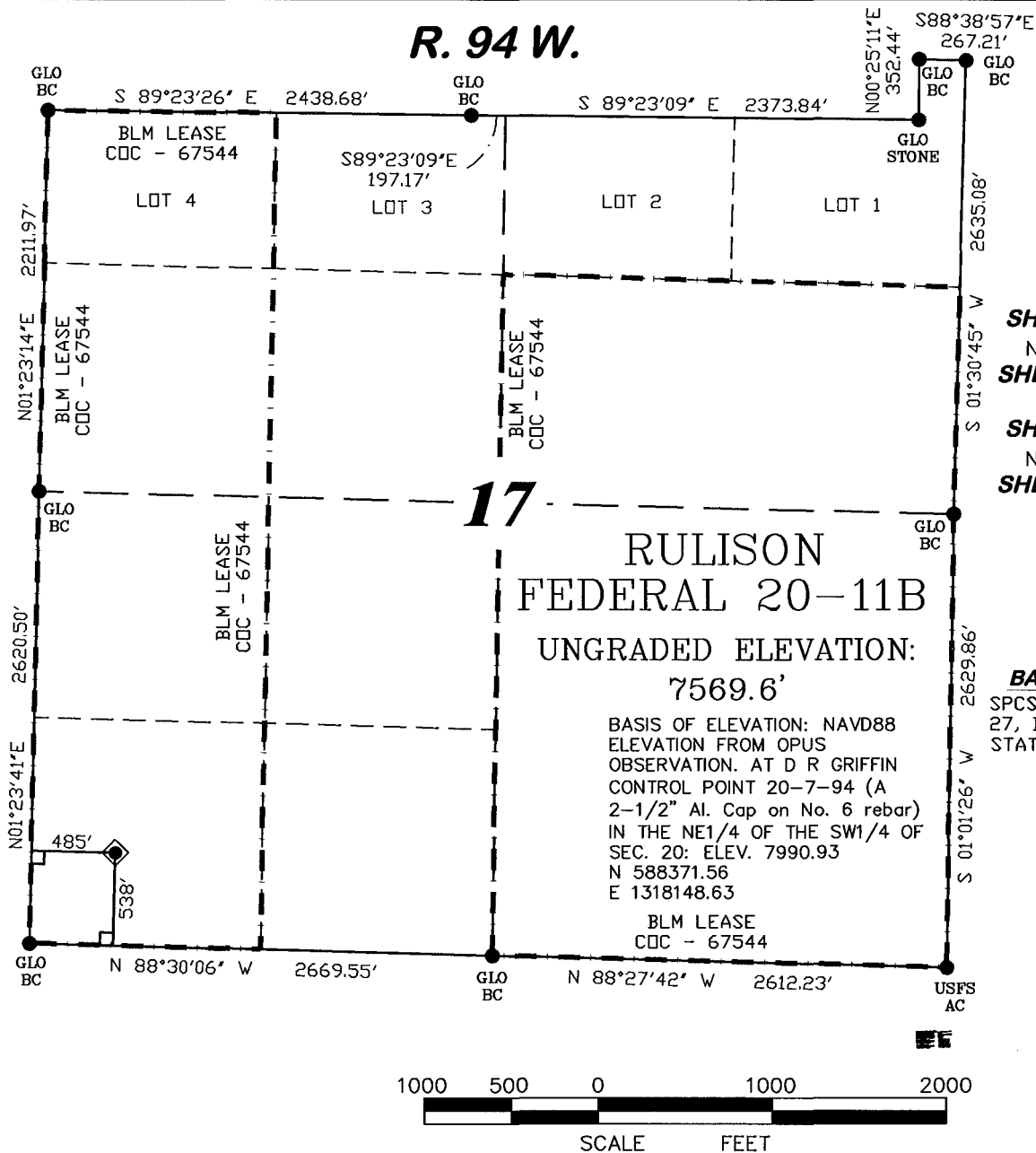


R. 94 W.



SCALE: 1" = 1000'

T. 7 S.

SHL LATITUDE (NAD 27)

NORTH 39.433235 DEG.

SHL LONGITUDE (NAD 27)

WEST 107.917134 DEG.

SHL LATITUDE (NAD 83)

NORTH 39.433213 DEG.

SHL LONGITUDE (NAD 83)

WEST 107.917758 DEG.

SHL NORTHING

591755.80

SHL EASTING

1317338.34

BASIS OF BEARING

SPCS CO CENTRAL NAD
27, BASED ON NGS TRIG.
STATION 'FABER'

LEGEND

- ◆ WELL LOCATION
- FOUND MONUMENT
- L DENOTES 90° TIE
- CALCULATED CORNER
- APPROXIMATE BHL

SURVEYOR'S STATEMENT

I, Ronald C. Rennke, an employee and agent on behalf of D.R. GRIFFIN & ASSOCIATES, INC. state the plat hereon is a correct representation of a survey made under my supervision on June 23, 2008 of the shown RULISON FEDERAL 20-11B and that the location has been staked on the ground as shown on the plat.

NOTES

GPS OPERATOR JOHN RICHARDSON
OBSERVED A PDOP OF 2.3.

ALL GPS OBSERVATIONS ARE IN
COMPLIANCE WITH COGCC RULE NO. 215.

HIGH PLATEAU DESERT
NO IMPROVEMENTS WITHIN
200' RADIUS OF WELL SITE.
SURFACE USE IS NATIVE WOODS

37065
2/6/09
Ronald C. Rennke
COLORADO PLS No. 37065

EXHIBIT 1



RIFFIN & ASSOCIATES, INC.

(307) 362-5028

1414 ELK ST., ROCK SPRINGS, WY 82901

DATE DRAWN: 5/23/07 KC

SCALE: 1" = 1000'

REVISED: 11/20/08 WG

JOB No. 15454

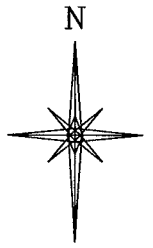
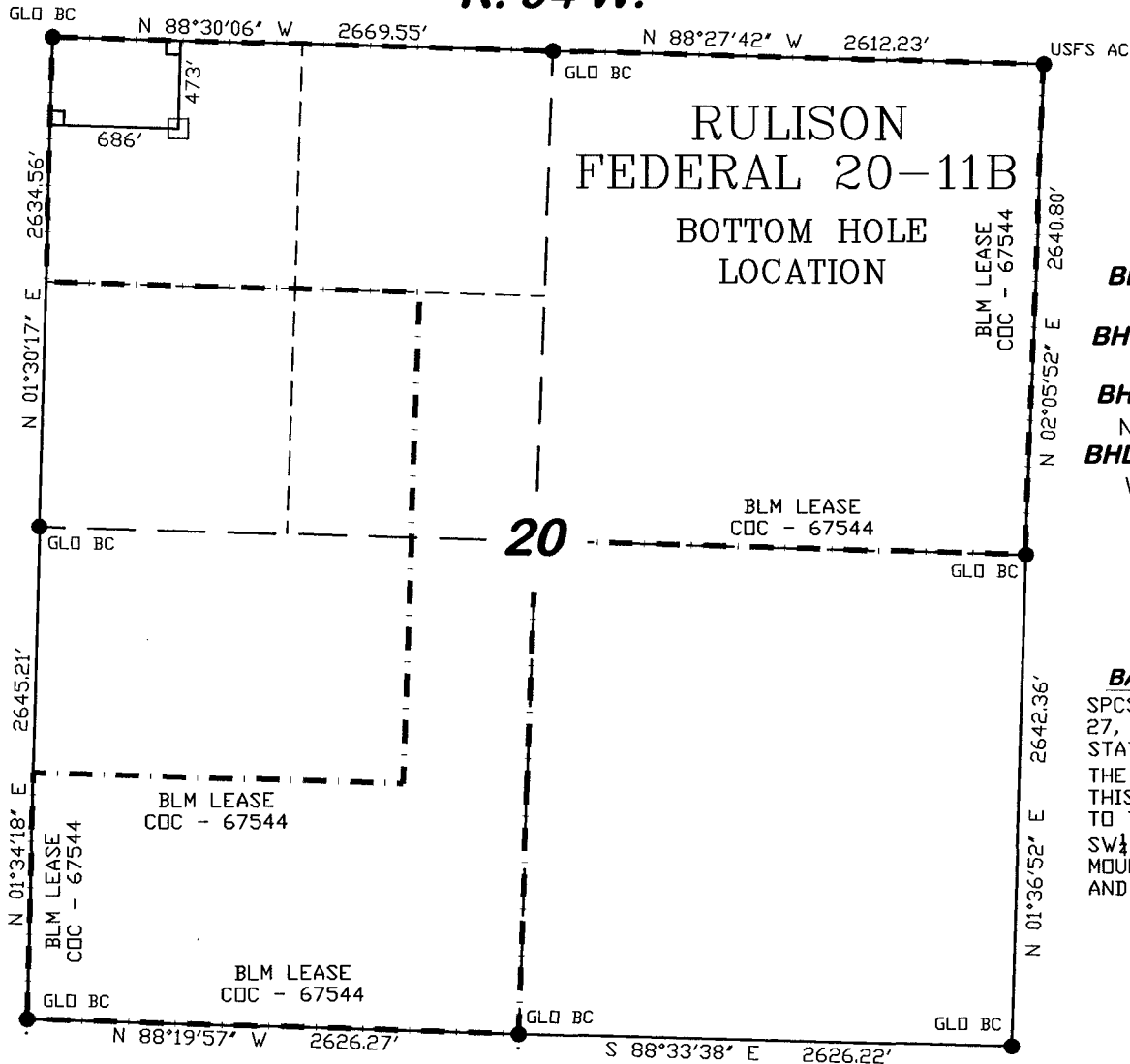
ADDED LEASE LINE

EXHIBIT 1

**PLAT OF DRILLING LOCATION
FOR
NOBLE ENERGY, INC.**

**538' F/SL & 485' F/WL, SECTION 17,
T. 7 S., R. 94 W., 6th P.M.
GARFIELD COUNTY, COLORADO**

R. 94 W.



SCALE: 1" = 1000'

T. 7 S.

BHL LATITUDE (NAD 27)

NORTH 39.430459 DEG.

BHL LONGITUDE (NAD 27)

WEST 107.916416 DEG.

BHL LATITUDE (NAD 83)

NORTH 39.430438 DEG.

BHL LONGITUDE (NAD 83)

WEST 107.917041 DEG.

BHL NORTHING

590740

BHL EASTING

1317514

BASIS OF BEARING

SPCS CO CENTRAL NAD
27, BASED ON NGS TRIG.
STATION 'FABER'

THE BASIS OF BEARINGS FOR
THIS SURVEY IS REFERENCED
TO THE SOUTH LINE OF THE
SW $\frac{1}{4}$ OF SECTION 17, BEING
MONUMENTED WITH GLD BC'S
AND BEARING N 88° 30' 06" W.

LEGEND

- ◆ WELL LOCATION
- FOUND MONUMENT
- L DENOTES 90° TIE
- CALCULATED CORNER
- APPROXIMATE BHL



SURVEYOR'S STATEMENT

I, Ronald C. Rennke, an employee and agent on behalf of D.R. GRIFFIN & ASSOCIATES, INC. state the plat hereon is a correct representation of a survey made under my supervision on June 23, 2008 of the shown RULISON FEDERAL 20-11B Bottom Hole Location.

NOTES

GPS OPERATOR JOHN RICHARDSON
OBSERVED A PDOP OF 2.3.

ALL GPS OBSERVATIONS ARE IN
COMPLIANCE WITH COGCC RULE NO. 215.

HIGH PLATEAU DESERT
NO IMPROVEMENTS WITHIN
200' RADIUS OF WELL SITE.
SURFACE USE IS NATIVE WOODS

2/6/09
Ronald C. Rennke
COLORADO PLS No. 37065

EXHIBIT 1



GRIFFIN & ASSOCIATES, INC.

(307) 362-5028

1414 ELK ST., ROCK SPRINGS, WY 82901

DATE DRAWN: 5/23/07 KC

SCALE: 1" = 1000'

JOB No. 15454

EXHIBIT 1

**PLAT OF BOTTOM HOLE LOCATION
FOR
NOBLE ENERGY, INC.**

**473' F/NL & 686' F/WL, SECTION 20,
T. 7 S., R. 94 W., 6th P.M.
GARFIELD COUNTY, COLORADO**