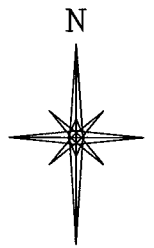
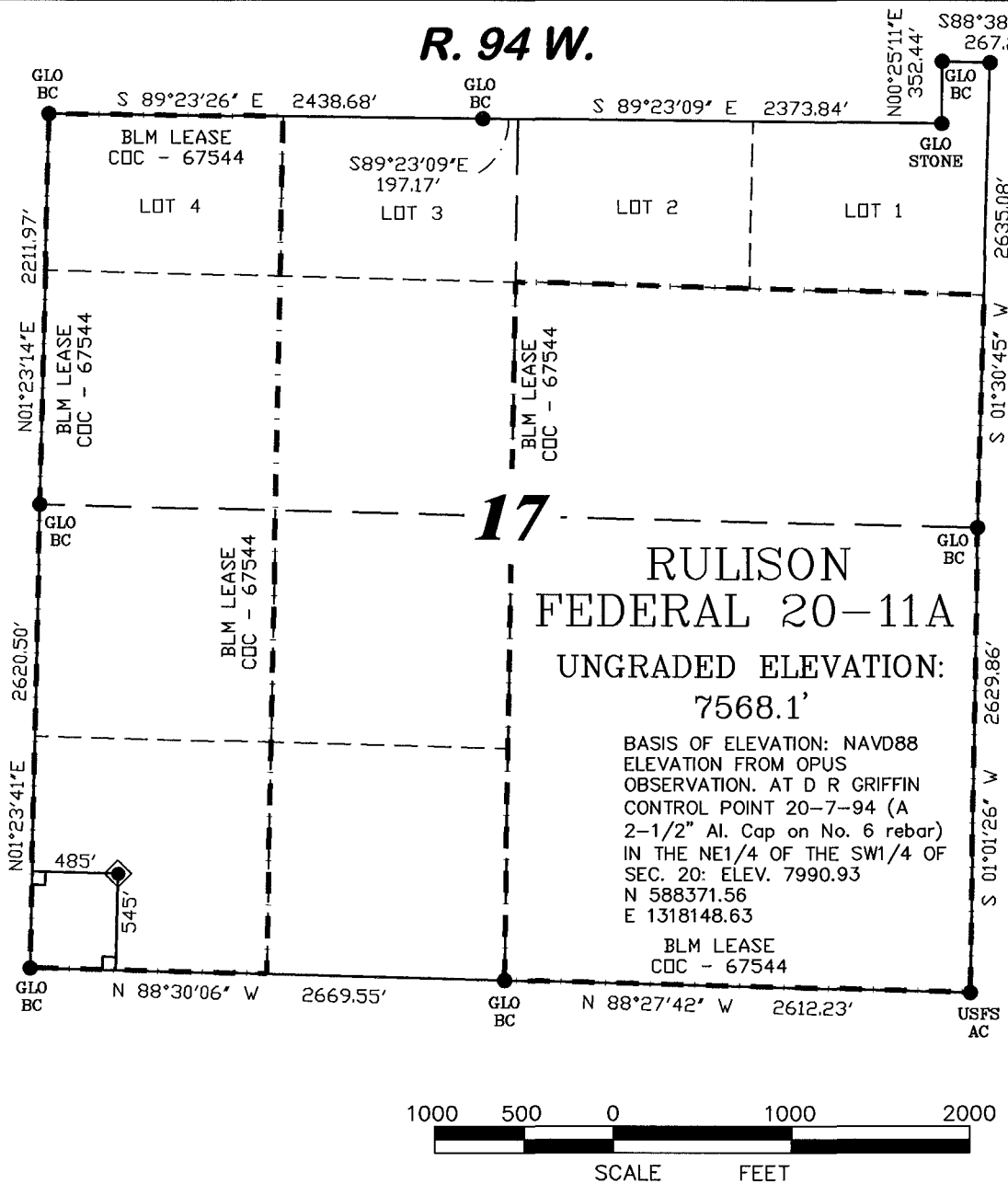


R. 94 W.



SCALE: 1" = 1000'

T. 7 S.

SHL LATITUDE (NAD 27)

NORTH 39.433255 DEG.

SHL LONGITUDE (NAD 27)

WEST 107.917133 DEG.

SHL LATITUDE (NAD 83)

NORTH 39.433234 DEG.

SHL LONGITUDE (NAD 83)

WEST 107.917758 DEG.

SHL NORTHING

591763.30

SHL EASTING

1317338.63

BASIS OF BEARING

SPCS CO CENTRAL NAD 27, BASED ON NGS TRIG. STATION 'FABER'

THE BASIS OF BEARINGS FOR THIS SURVEY IS REFERENCED TO THE SOUTH LINE OF THE SW 1/4 OF SECTION 17, BEING MONUMENTED WITH GLO BC'S AND BEARING N 88° 30' 06" W.

LEGEND

- ◆ WELL LOCATION
- FOUND MONUMENT
- L DENOTES 90° TIE
- CALCULATED CORNER
- APPROXIMATE BHL

SURVEYOR'S STATEMENT

I, Ronald C. Rennke, an employee and agent on behalf of D.R. GRIFFIN & ASSOCIATES, INC. state the plat hereon is a correct representation of a survey made under my supervision on June 23, 2008 of the shown RULISON FEDERAL 20-11A and that the location has been staked on the ground as shown on the plat.

NOTES

GPS OPERATOR JOHN RICHARDSON
OBSERVED A PDOP OF 2.3.

ALL GPS OBSERVATIONS ARE IN
COMPLIANCE WITH COGCC RULE NO. 215.

HIGH PLATEAU DESERT
NO IMPROVEMENTS WITHIN
200' RADIUS OF WELL SITE.
SURFACE USE IS NATIVE WOODS

37065
2/6/09
Ronald C. Rennke
COLORADO PLS No. 37065

EXHIBIT 1



GRIFFIN & ASSOCIATES, INC.

(307) 362-5028

1414 ELK ST., ROCK SPRINGS, WY 82901

DATE DRAWN: 5/23/07 KC

SCALE: 1" = 1000'

REVISED: 11/20/08 WG

JOB No. 15454

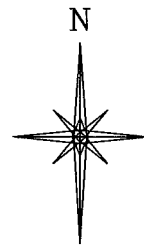
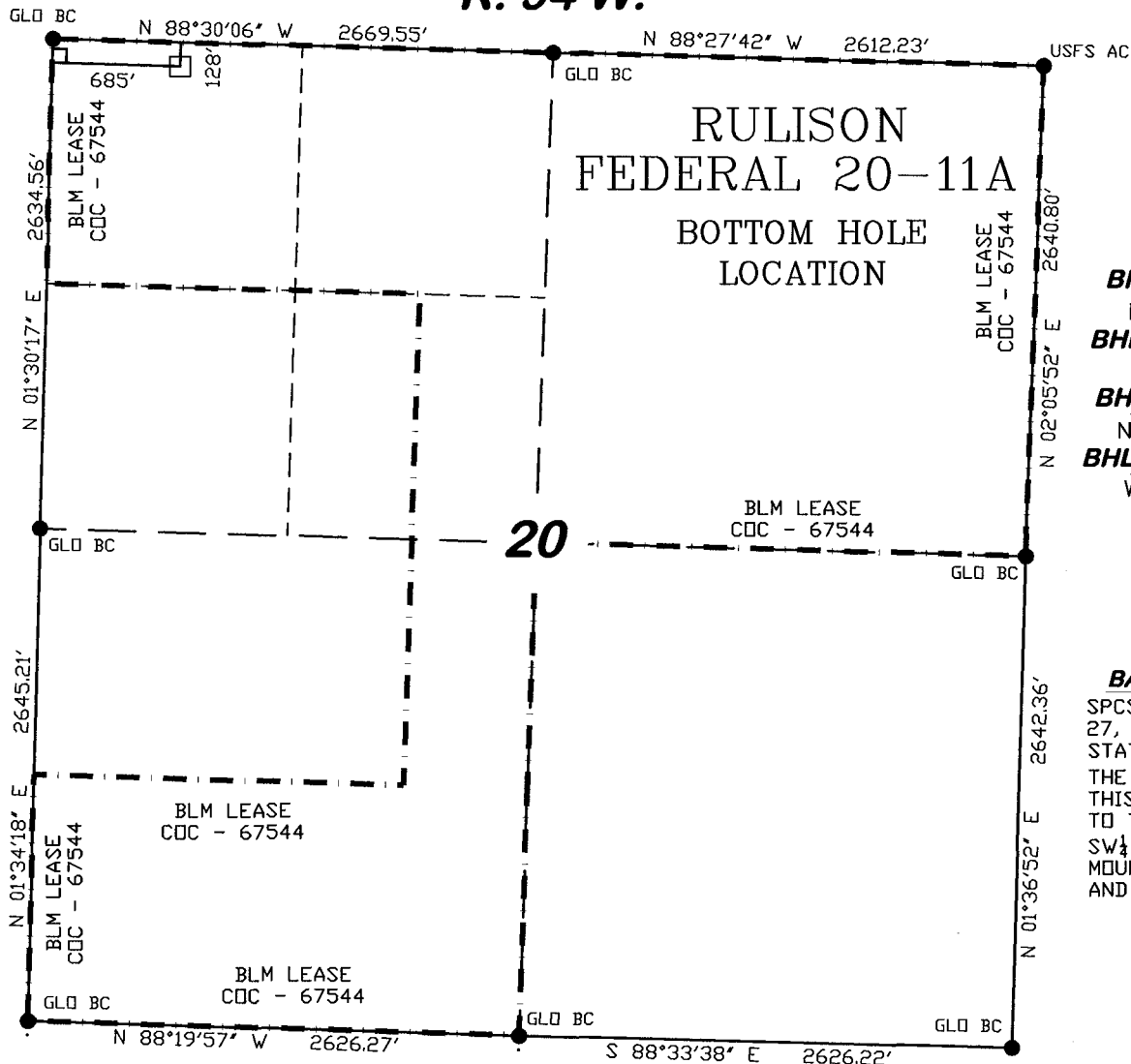
ADDED LEASE LINE

EXHIBIT 1

**PLAT OF DRILLING LOCATION
FOR
NOBLE ENERGY, INC.**

**545' F/SL & 485' F/WL, SECTION 17,
T. 7 S., R. 94 W., 6th P.M.
GARFIELD COUNTY, COLORADO**

R. 94 W.



SCALE: 1" = 1000'

T. 7 S.

BHL LATITUDE (NAD 27)

NORTH 39.431407 DEG.

BHL LONGITUDE (NAD 27)

WEST 107.916420 DEG.

BHL LATITUDE (NAD 83)

NORTH 39.431386 DEG.

BHL LONGITUDE (NAD 83)

WEST 107.917045 DEG.

BHL NORTHING

591085

BHL EASTING

1317522

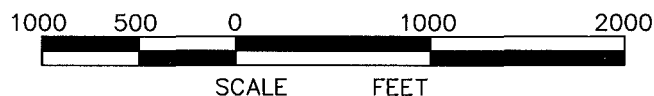
BASIS OF BEARING

SPCS CO CENTRAL NAD 27, BASED ON NGS TRIG. STATION 'FABER'

THE BASIS OF BEARINGS FOR THIS SURVEY IS REFERENCED TO THE SOUTH LINE OF THE SW $\frac{1}{4}$ OF SECTION 17, BEING MONUMENTED WITH GLO BC'S AND BEARING N 88° 30' 06" W.

LEGEND

- ◆ WELL LOCATION
- FOUND MONUMENT
- L DENOTES 90° TIE
- CALCULATED CORNER
- APPROXIMATE BHL



SURVEYOR'S STATEMENT

I, Ronald C. Rennke, an employee and agent on behalf of D.R. GRIFFIN & ASSOCIATES, INC. state the plat hereon is a correct representation of a survey made under my supervision on June 23, 2008 of the shown RULISON FEDERAL 20-11A Bottom Hole Location.

NOTES

GPS OPERATOR JOHN RICHARDSON
OBSERVED A PDOP OF 2.3.

ALL GPS OBSERVATIONS ARE IN COMPLIANCE WITH COGCC RULE NO. 215.

HIGH PLATEAU DESERT
NO IMPROVEMENTS WITHIN
200' RADIUS OF WELL SITE.
SURFACE USE IS NATIVE WOODS

2/6/09
Ronald C. Rennke
COLORADO PLS No. 37065

EXHIBIT 1



GRIFFIN & ASSOCIATES, INC.
(307) 362-5028 1414 ELK ST., ROCK SPRINGS, WY 82901

**PLAT OF BOTTOM HOLE LOCATION
FOR
NOBLE ENERGY, INC.**

DATE DRAWN: 5/23/07 KC

SCALE: 1" = 1000'

REVISED: 11/20/08 WG

JOB No. 15454

ADDED LEASE LINE

EXHIBIT 1

**128' F/NL & 685' F/WL, SECTION 20,
T. 7 S., R. 94 W., 6th P.M.
GARFIELD COUNTY, COLORADO**