

SCALE: 1" = 1000'

T. 7 S.

SHL LATITUDE (NAD 27)

NORTH 39.433379 DEG.

SHL LONGITUDE (NAD 27)

WEST 107.917165 DEG.

SHL LATITUDE (NAD 83)

NORTH 39.433358 DEG.

SHL LONGITUDE (NAD 83)

WEST 107.917790 DEG.

SHL NORTHING

591808.63

SHL EASTING






1317330.88

BASIS OF BEARING

SPCS CO CENTRAL NAD
27, BASED ON NGS TRIG.
STATION 'FABER'

THE BASIS OF BEARINGS FOR THIS SURVEY IS REFERENCED TO THE SOUTH LINE OF THE SW $\frac{1}{4}$ OF SECTION 17, BEING MOUNTED WITH GLO BC'S AND BEARING N 88° 30' 06" W.

LEGEND

-  WELL LOCATION
 FOUND MONUMENT
 DENOTES 90° TIE
 CALCULATED CORNER
 APPROXIMATE BHL

SURVEYOR'S STATEMENT

I, Ronald C. Rennke, an employee and agent on behalf of D.R. GRIFFIN & ASSOCIATES, INC. state the plat hereon is a correct representation of a survey made under my supervision on June 23, 2008 of the shown DOUBLE B RANCH 18-44C and that the location has been staked on the ground as shown on the plat.

NOTES

GPS OPERATOR JOHN RICHARDSON
OBSERVED A PDOP OF 2.3.

ALL GPS OBSERVATIONS ARE IN
COMPLIANCE WITH COGCC RULE NO. 215.

HIGH PLATEAU DESERT
NO IMPROVEMENTS WITHIN
200' RADIUS OF WELL SITE.
SURFACE USE IS NATIVE WOODS

COLORADO PLS No. 37065

EXHIBIT 1



RIFFIN & ASSOCIATES, INC.
1414 ELK ST., ROCK SPRINGS, WY 82901

(307) 362-5028

DATE DRAWN: 5/23/07 KC

SCALE: 1" = 1000'

REVISED: 11/20/08 WG

JOB No. 15454

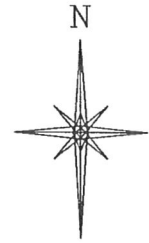
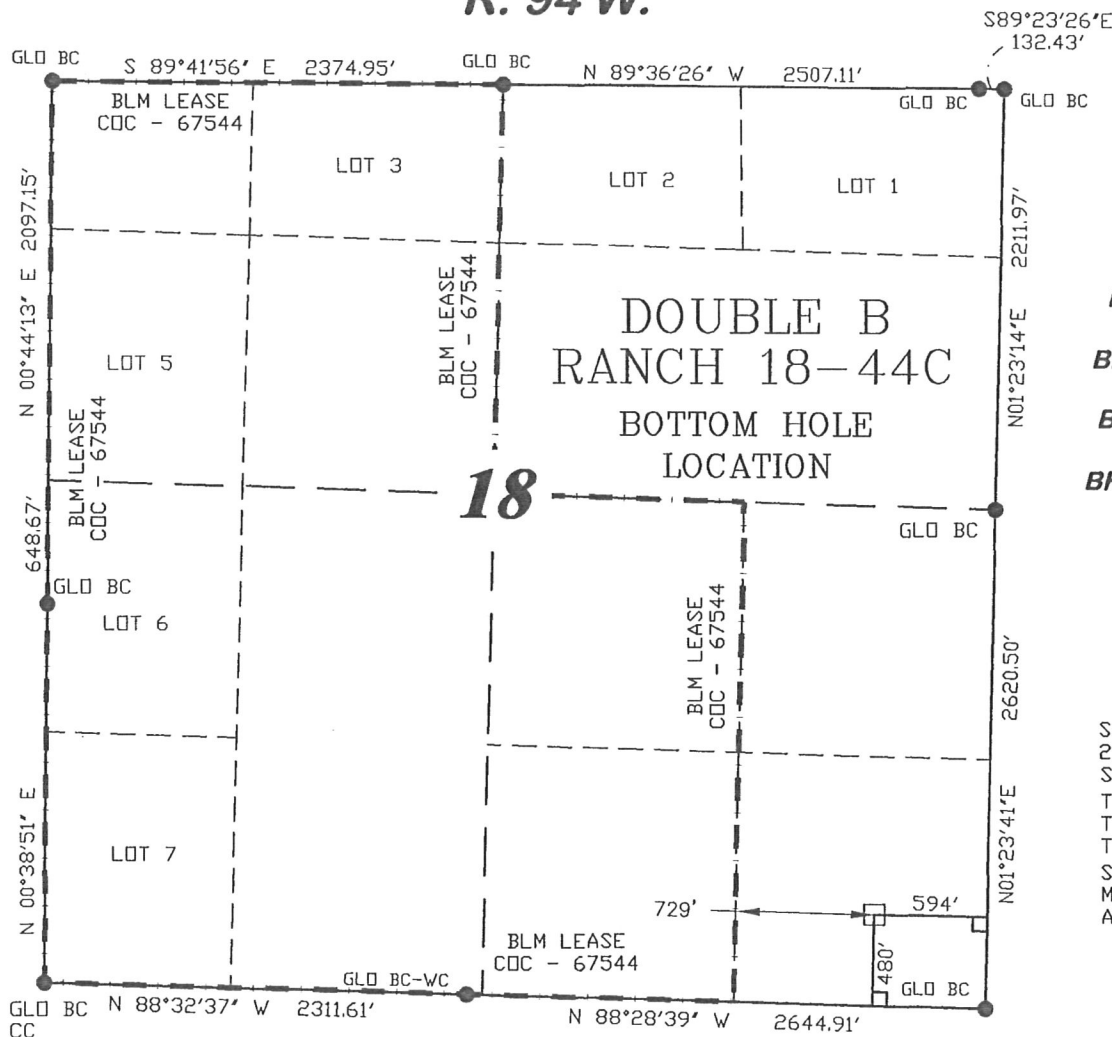
ADDED LEASE LINE

EXHIBIT 1

**PLAT OF DRILLING LOCATION
FOR
NOBLE ENERGY, INC.**

**590' F/SL & 476' F/WL, SECTION 17,
T. 7 S., R. 94 W., 6th P.M.
GARFIELD COUNTY, COLORADO**

R. 94 W.



SCALE: 1" = 1000'

T. 7 S.

BHL LATITUDE (NAD 27)

NORTH 39.433077 DEG.

BHL LONGITUDE (NAD 27)

WEST 107.920951 DEG.

BHL LATITUDE (NAD 83)

NORTH 39.433055 DEG.

BHL LONGITUDE (NAD 83)

WEST 107.921576 DEG.

BHL NORTHING

591727

BHL EASTING

1316259

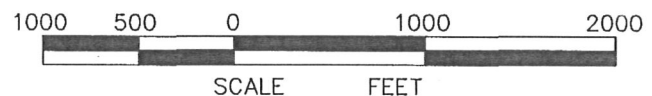
BASIS OF BEARING

SPCS CO CENTRAL NAD 27, BASED ON NGS TRIG. STATION 'FABER'

THE BASIS OF BEARINGS FOR THIS SURVEY IS REFERENCED TO THE SOUTH LINE OF THE SW $\frac{1}{4}$ OF SECTION 17, BEING MONUMENTED WITH GLO BC'S AND BEARING N 88° 30' 06" W.

LEGEND

- ◆ WELL LOCATION
- FOUND MONUMENT
- L DENOTES 90° TIE
- CALCULATED CORNER
- APPROXIMATE BHL



SURVEYOR'S STATEMENT

I, Ronald C. Rennke, an employee and agent on behalf of D.R. GRIFFIN & ASSOCIATES, INC. state the plat hereon is a correct representation of a survey made under my supervision on June 23, 2008 of the shown DOUBLE B RANCH 18-44C Bottom Hole Location.

NOTES

GPS OPERATOR JOHN RICHARDSON
OBSERVED A PDOP OF 2.3.

ALL GPS OBSERVATIONS ARE IN
COMPLIANCE WITH COGCC RULE NO. 215.

HIGH PLATEAU DESERT
NO IMPROVEMENTS WITHIN
200' RADIUS OF WELL SITE.
SURFACE USE IS NATIVE WOODS

2/6/09
Ronald C. Rennke
COLORADO PLS No. 37065

EXHIBIT 1

DRG RIFFIN & ASSOCIATES, INC.
(307) 362-5028 1414 ELK ST., ROCK SPRINGS, WY 82901

DATE DRAWN: 5/23/07 KC

SCALE: 1" = 1000'

REVISED: 11/20/08 WG

JOB No. 15454

ADDED LEASE LINE

EXHIBIT 1

**PLAT OF BOTTOM HOLE LOCATION
FOR
NOBLE ENERGY, INC.**

**480' F/SL & 594' F/EL, SECTION 18,
T. 7 S., R. 94 W., 6th P.M.
GARFIELD COUNTY, COLORADO**