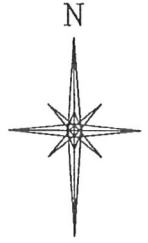
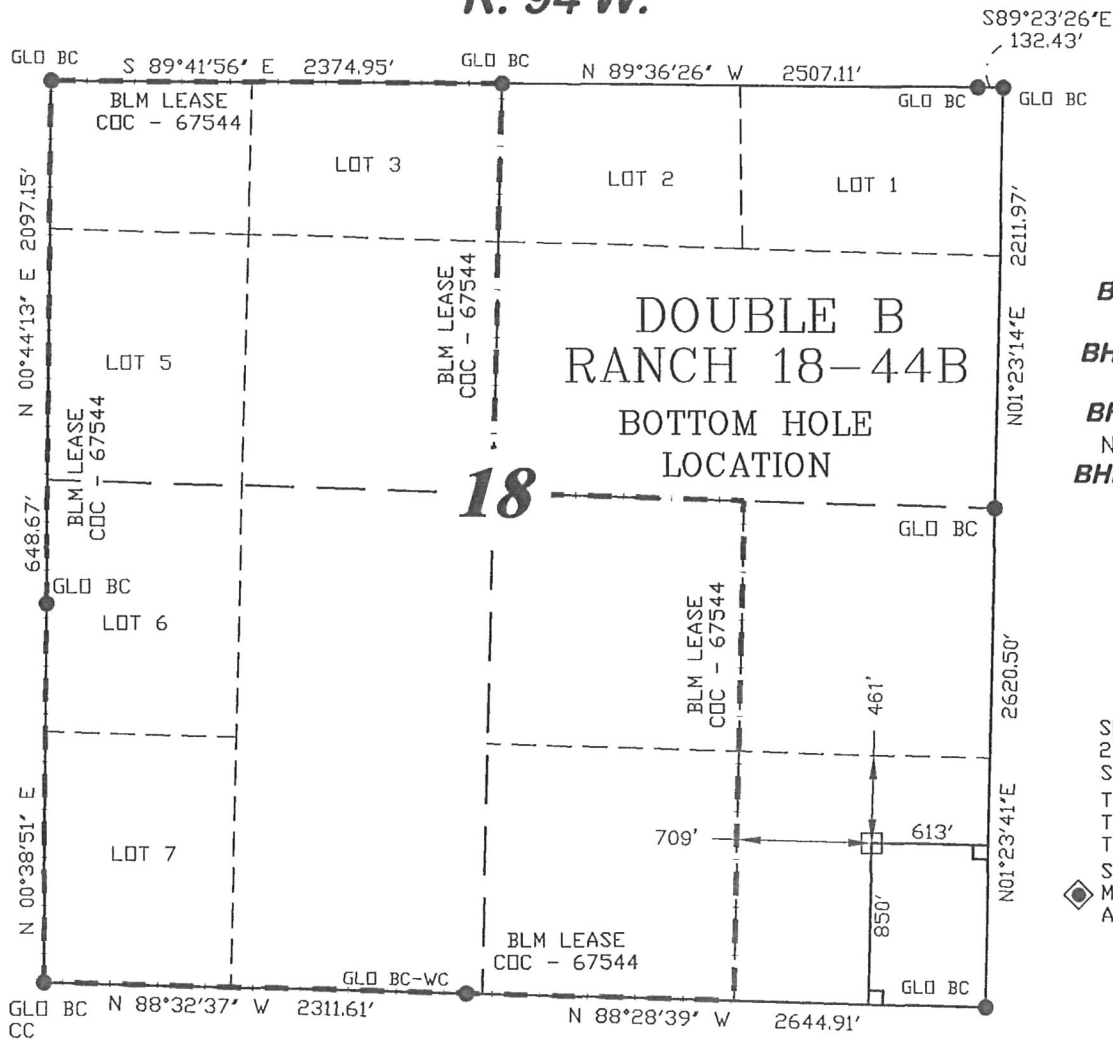


R. 94 W.



SCALE: 1" = 1000'

T. 7 S.

BHL LATITUDE (NAD 27)

NORTH 39.433985 DEG.

BHL LONGITUDE (NAD 27)

WEST 107.921000 DEG.

BHL LATITUDE (NAD 83)

NORTH 39.433964 DEG.

BHL LONGITUDE (NAD 83)

WEST 107.921625 DEG.

BHL NORTHING

592058

BHL EASTING

1316254

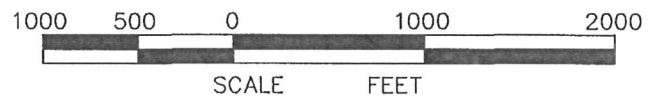
BASIS OF BEARING

SPCS CO CENTRAL NAD 27, BASED ON NGS TRIG. STATION 'FABER'

THE BASIS OF BEARINGS FOR THIS SURVEY IS REFERENCED TO THE SOUTH LINE OF THE SW $\frac{1}{4}$ OF SECTION 17, BEING MONUMENTED WITH GLO BC'S AND BEARING N 88° 30' 06" W.

LEGEND

- ◆ WELL LOCATION
- FOUND MONUMENT
- L DENOTES 90° TIE
- CALCULATED CORNER
- APPROXIMATE BHL



SURVEYOR'S STATEMENT

I, Ronald C. Rennke, an employee and agent on behalf of D.R. GRIFFIN & ASSOCIATES, INC. state the plat hereon is a correct representation of a survey made under my supervision on June 23, 2008 of the shown DOUBLE B RANCH 18-44B Bottom Hole Location.

NOTES

GPS OPERATOR JOHN RICHARDSON
OBSERVED A PDOP OF 2.3.

ALL GPS OBSERVATIONS ARE IN
COMPLIANCE WITH COGCC RULE NO. 215.

HIGH PLATEAU DESERT
NO IMPROVEMENTS WITHIN
200' RADIUS OF WELL SITE.
SURFACE USE IS NATIVE WOODS

EXHIBIT 1

DRG RIFFIN & ASSOCIATES, INC.
(307) 362-5028 1414 ELK ST., ROCK SPRINGS, WY 82901

**PLAT OF BOTTOM HOLE LOCATION
FOR
NOBLE ENERGY, INC.**

DATE DRAWN: 5/23/07 KC

SCALE: 1" = 1000'

REVISED: 11/20/08 WG

JOB No. 15454

ADDED LEASE LINE

EXHIBIT 1

**850' F/SL & 613' F/EL, SECTION 18,
T. 7 S., R. 94 W., 6th P.M.
GARFIELD COUNTY, COLORADO**