

Rubicon Oil & Gas, LLC  
508 West Wall, Suite 500  
Midland, Texas 79701

June 17<sup>th</sup>, 2010

**Hand Delivered**

Mr. Matthew Pollart  
Colorado State Board of Land Commissioners  
5312 West 9<sup>th</sup> Street Drive, Suite 130  
Greeley, CO 80634

Re: Notice of Intent to Conduct Surface Operations  
NW $\frac{1}{4}$ NW $\frac{1}{4}$  of Section 28, T10N, R67W  
Pawnee 1-67-28-1 Well  
Weld County, Colorado

Dear Mr. Pollart:

The Colorado Oil and Gas Conservation Commission (COGCC) has specific guidelines and procedures regarding surface activities. These rules stipulate an operator must give an affected surface owner notice in writing at least thirty (30) days prior to drilling an oil and gas well.

It is Rubicon Oil and Gas LLC's intention to begin operations to drill an oil and gas well on the lands described above. Rubicon will drill the well upon receipt of approved drilling permit application and delivery of landowner notification.

Enclosed please find the following information.

- A brochure describing surface owner rights and responsibility
- The policies for a consultation with Rubicon (COGCC Rule 306)

A Rubicon Oil and Gas LLC representative has met with Matt Pollart of the Colorado State Board of Land Commissioners office in Greeley, Colorado to discuss the proposed location of wellsite, access roads, production facility and reclamation.

If you have any questions concerning Rubicon's plans, please contact me at (970) 314-0334.

Sincerely,



Mathew McRobbie, Agent

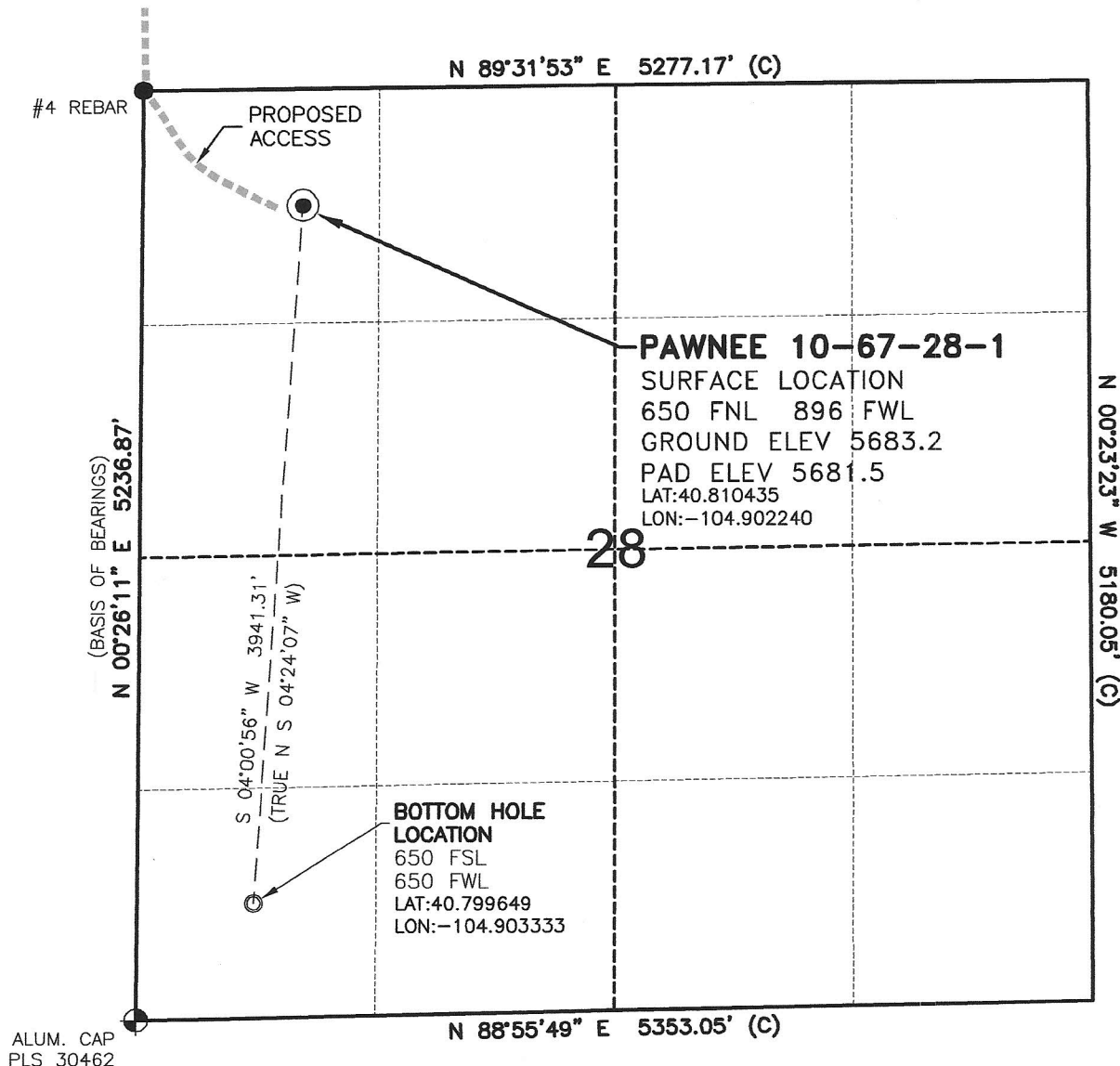
Colorado State Board of Land Commissioners

By:   
Matthew Pollart, North Central District Manager

Date: 6/17/10

# WELL LOCATION MAP

PAWNEE 10-67-28-1 PAD



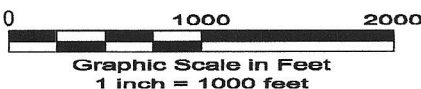
## SURVEYOR'S STATEMENT

The undersigned hereby states that the well location shown hereon was staked on the ground based on existing monumentation and/or physical evidence found in the field and is correct to the best of my knowledge, information and belief.

## NOTES

- 1.) Horizontal coordinates based on NGS control point "HORA" and vertical datum based on NGS control point "P 390" with an elevation of 5199.21. NAVD 1988.
  - 2.) All directions, distances, and dimensions shown hereon are based on coordinates from the "Colorado coordinate system of 1983 north zone" (article 52 of title 38, C.R.S.).
  - 3.) All section line dimensions shown hereon are based on field measurements of existing monuments and/or physical evidence found in the field unless otherwise indicated. Refer to land survey plats deposited in Weld County.
  - 4.) Physical features shown hereon are for graphical representation only.
  - 5.) See Form 2A for visible improvements within 400' of wellhead.
  - 6.) Distances to nearest section lines are measured perpendicularly.
  - 7.) This is not a land survey nor land survey plat.
  - 8.) Date of Survey 4/2/10; Date of Drawing 4/12/10. REV 0
- PDOP Reading: 1.8 Instrument Operator: DJM

4/12/10



**GEO SURV**

LAND SURVEYING AND MAPPING  
 LAFAYETTE - WINTER PARK  
 Ph 303 666 0379 Fx 303 665 6320

**RUBICON OIL & GAS LLC**  
 PAWNEE 10-67-28-1

SL NW1/4 NW1/4 SEC. 28 T10N R67W  
 BL SW1/4 SW1/4 SEC. 28 T10N R67W  
 6th PM WELD COUNTY COLORADO

VEGETATION:  
PASTURE—GRASSES

## PAD LAYOUT

PAWNEE 10-67-28-1 PAD

SURFACE USE:  
AGRICULTURAL  
IMPROVED PASTURE

PROPOSED  
ACCESS

INSTALL 18" CMP

STORMWATER  
CONTROL DITCH

ROCK OUTCROP

RANCH ROAD

DAYLIGHT LINE

LIMIT OF  
DISTURBANCE

C/1.4'

C/0.7'

C/2.1'

C/1.7'

C/0'

F/0.4'

F/3'

C/1.3'

F/0.5'

F/0.4'

F/3'

C/1.3'

F/0.5'

F/0.4'

F/3'

C/1.4'

C/0.7'

C/2.1'

C/1.7'

C/0'

F/0.4'

F/3'

C/1.3'

F/0.5'

F/0.4'

F/3'

C/1.3'

F/0.5'

F/0.4'

F/3'

C/1.3'

F/0.5'

F/0.4'

F/3'

C/1.3'

F/0.5'

F/0.4'

F/3'

C/1.3'

F/0.5'

F/0.4'

F/3'

C/1.3'

F/0.5'

F/0.4'

F/3'

C/1.3'

F/0.5'

F/0.4'

F/3'

C/1.3'

F/0.5'

F/0.4'

F/3'

C/1.3'

F/0.5'

F/0.4'

F/3'

C/1.3'

F/0.5'

F/0.4'

F/3'

C/1.3'

F/0.5'

F/0.4'

F/3'

C/1.3'

F/0.5'

F/0.4'

F/3'

C/1.3'

F/0.5'

F/0.4'

F/3'

C/1.3'

F/0.5'

F/0.4'

F/3'

C/1.3'

F/0.5'

F/0.4'

F/3'

C/1.3'

F/0.5'

F/0.4'

F/3'

C/1.3'

F/0.5'

F/0.4'

F/3'

C/1.3'

F/0.5'

F/0.4'

F/3'

C/1.3'

F/0.5'

F/0.4'

F/3'

C/1.3'

F/0.5'

F/0.4'

F/3'

C/1.3'

F/0.5'

F/0.4'

F/3'

C/1.3'

F/0.5'

F/0.4'

F/3'

C/1.3'

F/0.5'

F/0.4'

F/3'

C/1.3'

F/0.5'

F/0.4'

F/3'

C/1.3'

F/0.5'

F/0.4'

F/3'

C/1.3'

F/0.5'

F/0.4'

F/3'

C/1.3'

F/0.5'

F/0.4'

F/3'

C/1.3'

F/0.5'

F/0.4'

F/3'

C/1.3'

F/0.5'

F/0.4'

F/3'

C/1.3'

F/0.5'

F/0.4'

F/3'

C/1.3'

F/0.5'

F/0.4'

F/3'

C/1.3'

F/0.5'

F/0.4'

F/3'

C/1.3'

F/0.5'

F/0.4'

F/3'

C/1.3'

F/0.5'

F/0.4'

F/3'

C/1.3'

F/0.5'

F/0.4'

F/3'

C/1.3'

F/0.5'

F/0.4'

F/3'

C/1.3'

F/0.5'

F/0.4'

F/3'

C/1.3'

F/0.5'

F/0.4'

F/3'

C/1.3'

F/0.5'

F/0.4'

F/3'

C/1.3'

F/0.5'

F/0.4'

F/3'

C/1.3'

F/0.5'

F/0.4'

F/3'

C/1.3'

F/0.5'

F/0.4'

F/3'

C/1.3'

F/0.5'

F/0.4'

F/3'

C/1.3'

F/0.5'

F/0.4'

F/3'

C/1.3'

F/0.5'

F/0.4'

F/3'

C/1.3'

F/0.5'

F/0.4'

F/3'

C/1.3'

F/0.5'

F/0.4'

F/3'

C/1.3'

F/0.5'

F/0.4'

F/3'

C/1.3'

F/0.5'

F/0.4'

F/3'

C/1.3'

F/0.5'

F/0.4'

F/3'

C/1.3'

F/0.5'

F/0.4'

F/3'

C/1.3'

F/0.5'

F/0.4'

F/3'

C/1.3'

F/0.5'

F/0.4'

F/3'

C/1.3'

F/0.5'

F/0.4'

F/3'

C/1.4'

C/0.7'

C/2.1'

C/1.7'

C/0'

F/0.4'

F/3'

C/1.3'

F/0.5'

F/0.4'

F/3'

C/1.3'

F/0.5'

F/0.4'

F/3'

C/1.3'

F/0.5'

F/0.4'

F/3'

C/1.3'

F/0.5'

F/0.4'

F/3'

C/1.3'

F/0.5'

F/0.4'

F/3'

C/1.3'

F/0.5'

F/0.4'

F/3'

C/1.3'

F/0.5'

F/0.4'

F/3'

C/1.3'

F/0.5'

F/0.4'

F/3'

C/1.3'

F/0.5'

F/0.4'

F/3'

C/1.3'

F/0.5'

F/0.4'

F/3'

C/1.3'

F/0.5'

F/0.4'

F/3'

C/1.3'

F/0.5'

F/0.4'

F/3'

C/1.3'

F/0.5'

F/0.4'

F/3'

C/1.3'

F/0.5'

F/0.4'

F/3'

C/1.3'

F/0.5'

F/0.4'

F/3'

C/1.3'

F/0.5'

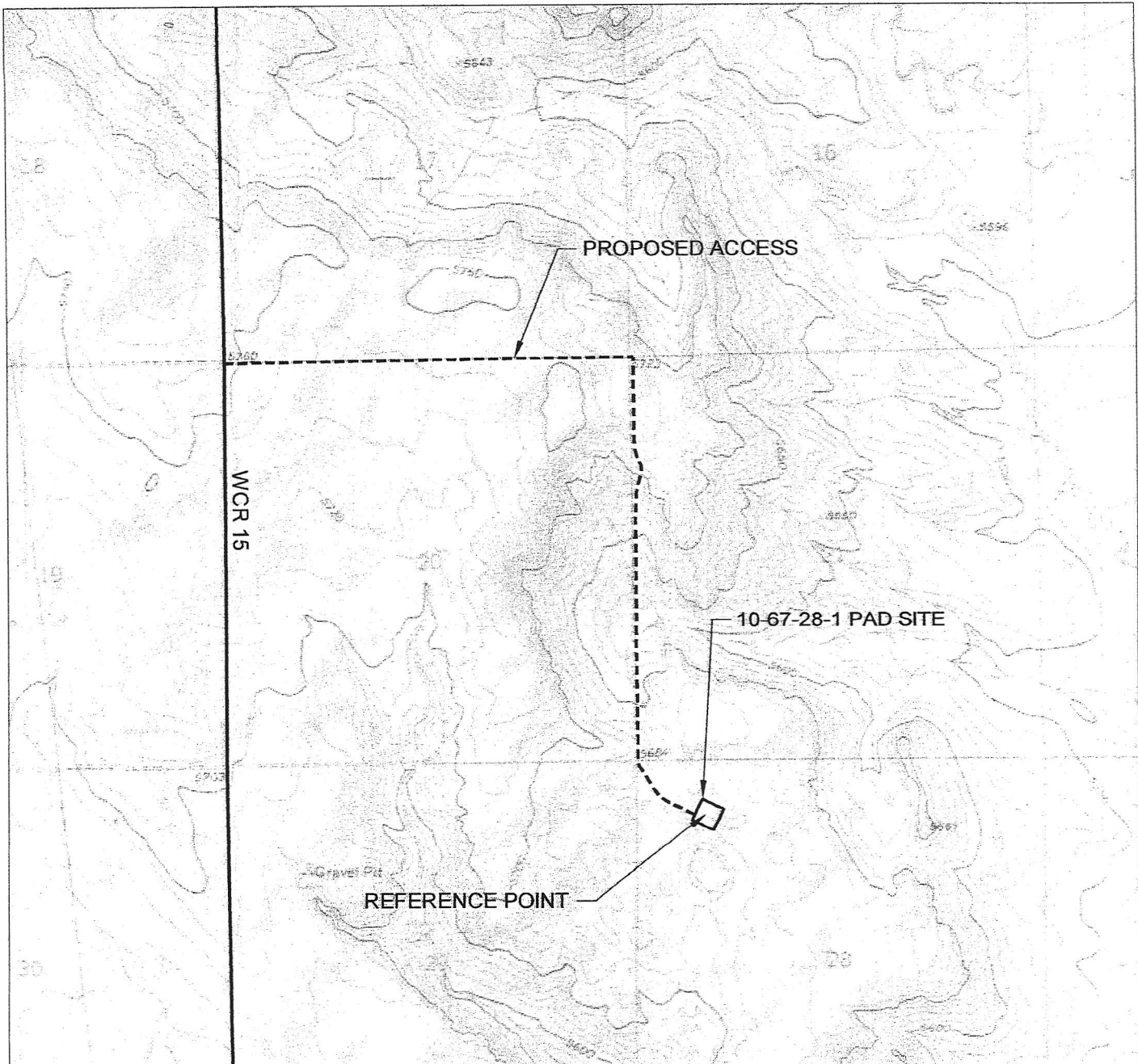
F/0.4'

F/3'

C/1.3'

F/0.

# ACCESS ROAD MAP



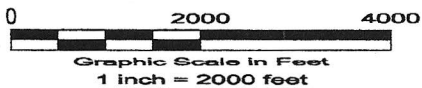
## DRIVING DIRECTIONS:

MP 0.0 - Intersection of Highway 85 & 4th Street in Nunn; North on Highway 85  
 MP 4.6 - Left on WCR 108; West along WCR 108  
 MP 5.3 - Cross over Railroad  
 MP 5.6 - Right on WCR 27; North along WCR 27  
 MP 6.7 - Left on WCR 110; West along WCR 110  
 MP 12.4 - Right on WCR 15; North along WCR 15  
 MP 15.4 - Right on access to Pawnee 10-67-28-1 Pad  
 MP 17.6 - Pawnee 10-67-28-1 Pad

6/7/10



North



LAND SURVEYING AND MAPPING  
 LAFAYETTE - WINTER PARK  
 Ph 303 666 0379 Fx 303 665 6320

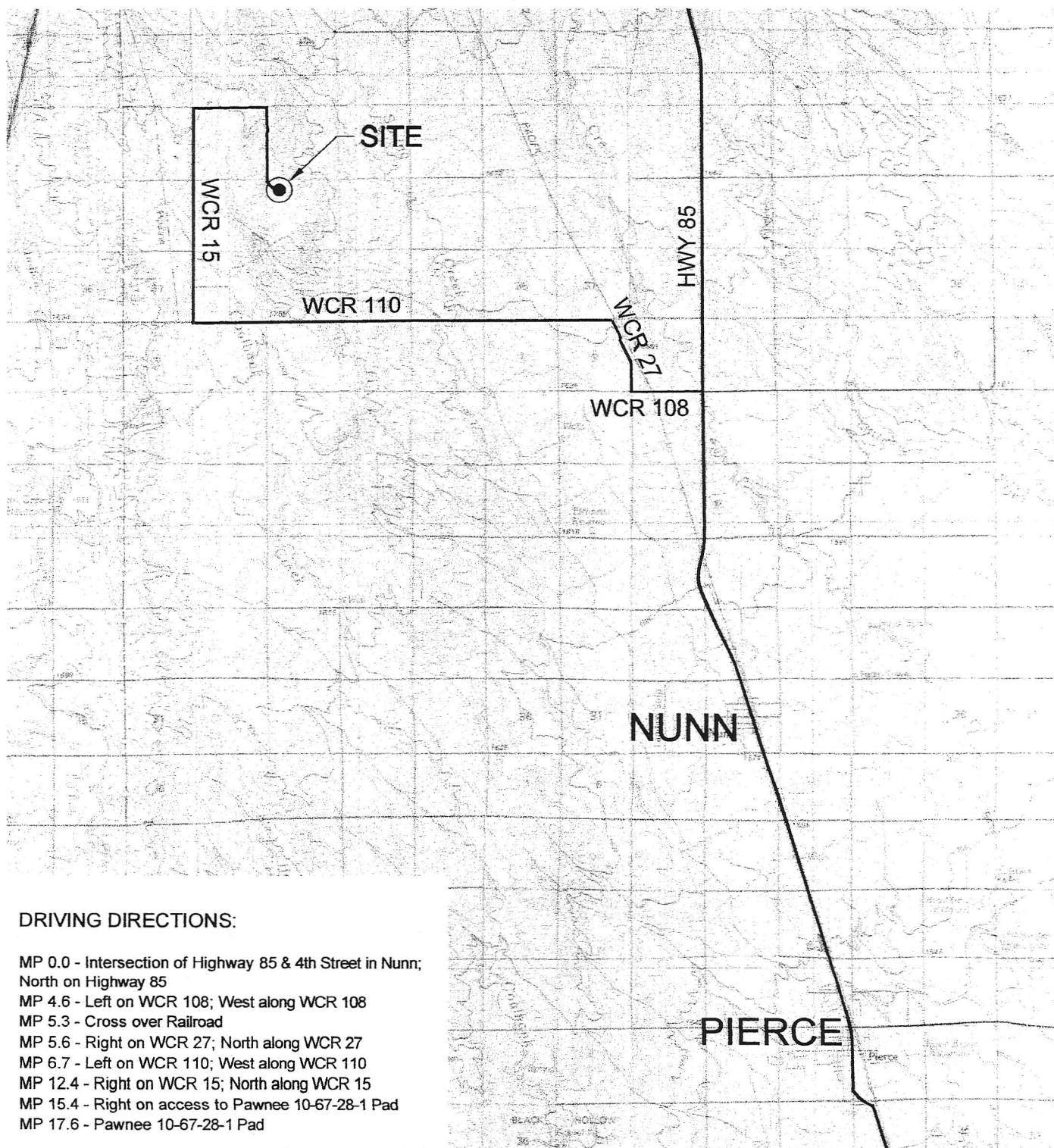
**RUBICON OIL & GAS LLC**  
**PAWNEE 10-67-28-1**

**NW1/4 NW1/4 SEC. 28 T10N R67W**  
**6th PM WELD COUNTY COLORADO**



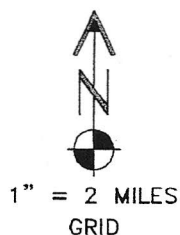
# VICINITY MAP

PAWNEE 10-67-28-1 PAD



## DRIVING DIRECTIONS:

- MP 0.0 - Intersection of Highway 85 & 4th Street in Nunn;
- North on Highway 85
- MP 4.6 - Left on WCR 108; West along WCR 108
- MP 5.3 - Cross over Railroad
- MP 5.6 - Right on WCR 27; North along WCR 27
- MP 6.7 - Left on WCR 110; West along WCR 110
- MP 12.4 - Right on WCR 15; North along WCR 15
- MP 15.4 - Right on access to Pawnee 10-67-28-1 Pad
- MP 17.6 - Pawnee 10-67-28-1 Pad



**GEO SURV**

LAND SURVEYING AND MAPPING  
LAFAYETTE - WINTER PARK  
Ph 303 666 0379 Fx 303 665 6320

**RUBICON OIL & GAS LLC**  
PAWNEE 10-67-28-1

SL NW1/4 NW1/4 SEC. 28 T10N R67W  
BL SW1/4 SW1/4 SEC. 28 T10N R67W  
6th PM WELD COUNTY COLORADO

6/7/10