

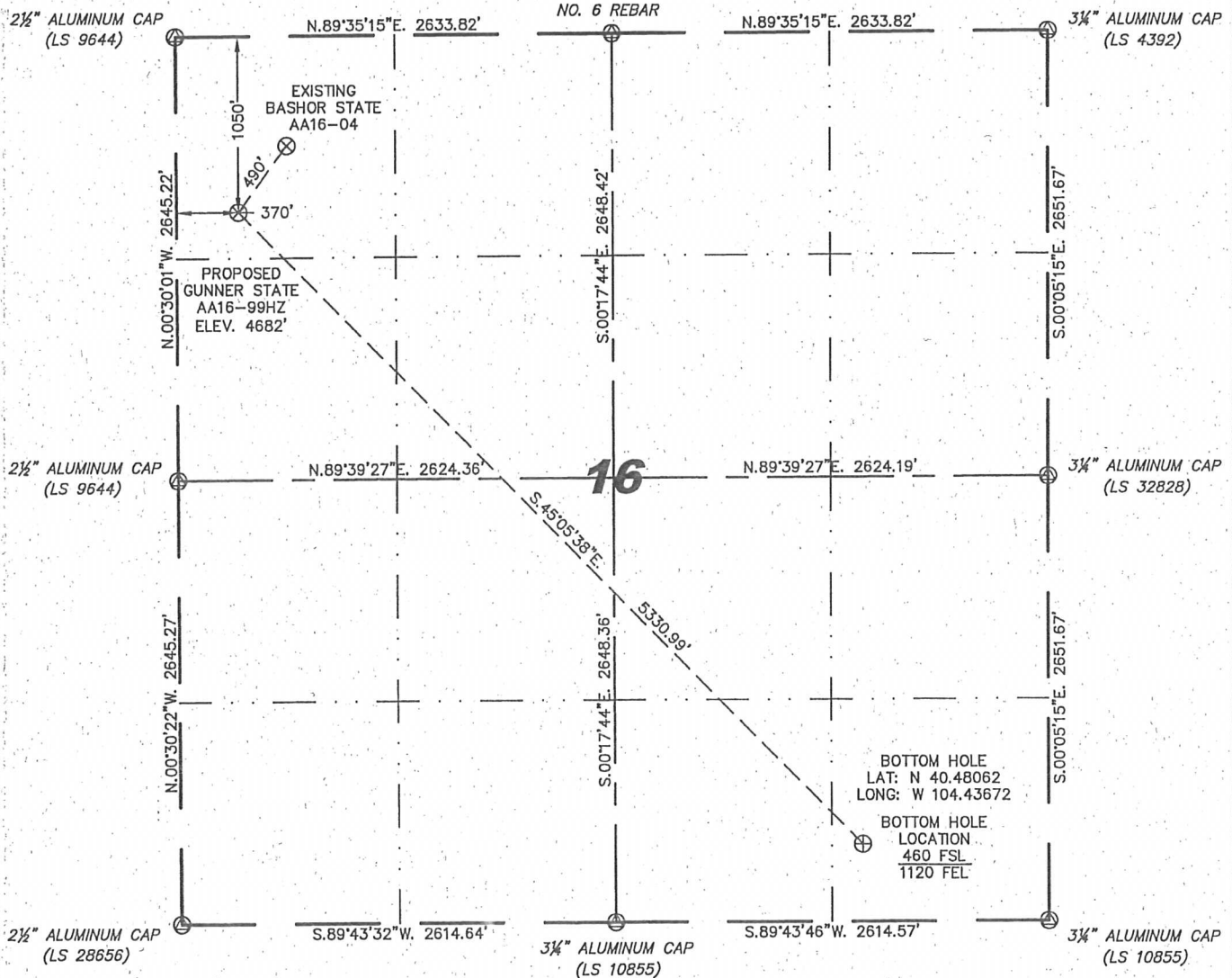
Steil Surveying Services, LLC

1102 West 19th Street P.O. BOX 2073

Cheyenne, Wyoming 82009

WELL LOCATION CERTIFICATE
THIS MAP DOES NOT REPRESENT A BOUNDARY SURVEY

SECTION 16
TOWNSHIP 6 NORTH
RANGE 63 WEST



0 1000

Scale: 1" = 1000'

IN ACCORDANCE WITH A REQUEST FROM ERIK VAN DECAR - NOBLE ENERGY INC, STEIL SURVEYING SERVICES, LLC HAS DETERMINED THE LOCATION OF THE GUNNER STATE AA16-99HZ WELL TO BE 1050' FNL, 370' FNL, AS MEASURED AT NINETY (90) DEGREES FROM THE SECTION LINES, SECTION 16, TOWNSHIP 6 NORTH, RANGE 63 WEST, 6TH PRINCIPLE MERIDIAN, WELD COUNTY, COLORADO.

I HEREBY CERTIFY THAT THIS WELL LOCATION CERTIFICATE WAS PREPARED BY ME, OR UNDER MY DIRECT SUPERVISION, THAT THE FIELD WORK WAS COMPLETED ON 08/06/2010, FOR AND ON BEHALF OF NOBLE ENERGY INC, THAT IT IS NOT A LAND SURVEY PLAT OR AN IMPROVEMENT SURVEY PLAT, AND THAT IT IS NOT TO BE RELIED UPON FOR ESTABLISHMENT OF FENCE, BUILDING, OR OTHER FUTURE IMPROVEMENT LINES.

NOTES:

- 1) BASIS OF BEARINGS FOR THIS MAP ARE BASED UPON GPS OBSERVATIONS MADE ON 05/07/2007 BETWEEN MONUMENTS LOCATED AT THE SOUTHEAST SECTION CORNER AND THE NORTHEAST SECTION CORNER OF SAID SECTION AND WITH ALL BEARINGS SHOWN HEREON RELATIVE THERETO.
- 2) ELEVATIONS ARE BASED UPON NGS OPUS SOLUTION NAVD 88 DATUM.
- 3) THE NEAREST EXISTING WELL IS: BASHOR STATE AA16-04, 490' NORTHEAST.
- 4) SEE VISIBLE IMPROVEMENTS EXHIBIT FOR ALL IMPROVEMENTS WITHIN 600'.
- 5) THE LOCATION FALLS IN CROP LAND.

LATITUDE & LONGITUDE (NAD 83 SURFACE HOLE):

LATITUDE: N 40.49107°

LONGITUDE: W 104.45014°

PDOP: 2.7

QUARTER-QUARTER: NW/4NW/4

NEAREST PROPERTY LINE: 370' TO THE WEST

LEGEND

- (A) FOUND SURVEY MONUMENT PER MONUMENT RECORD - EXCEPTIONS NOTED.
- (C) CALCULATED DIMENSION

NOTICE: According to Colorado law you MUST commence any legal action based upon any defect in this W.L.C. within three years after you first discover such defect. In no event may any action based upon any defect in this W.L.C. be commenced more than ten years from this sold date of the certification shown hereon.

David C. Holmes
Professional Land Surveyor Registration No. 32828
State of Colorado

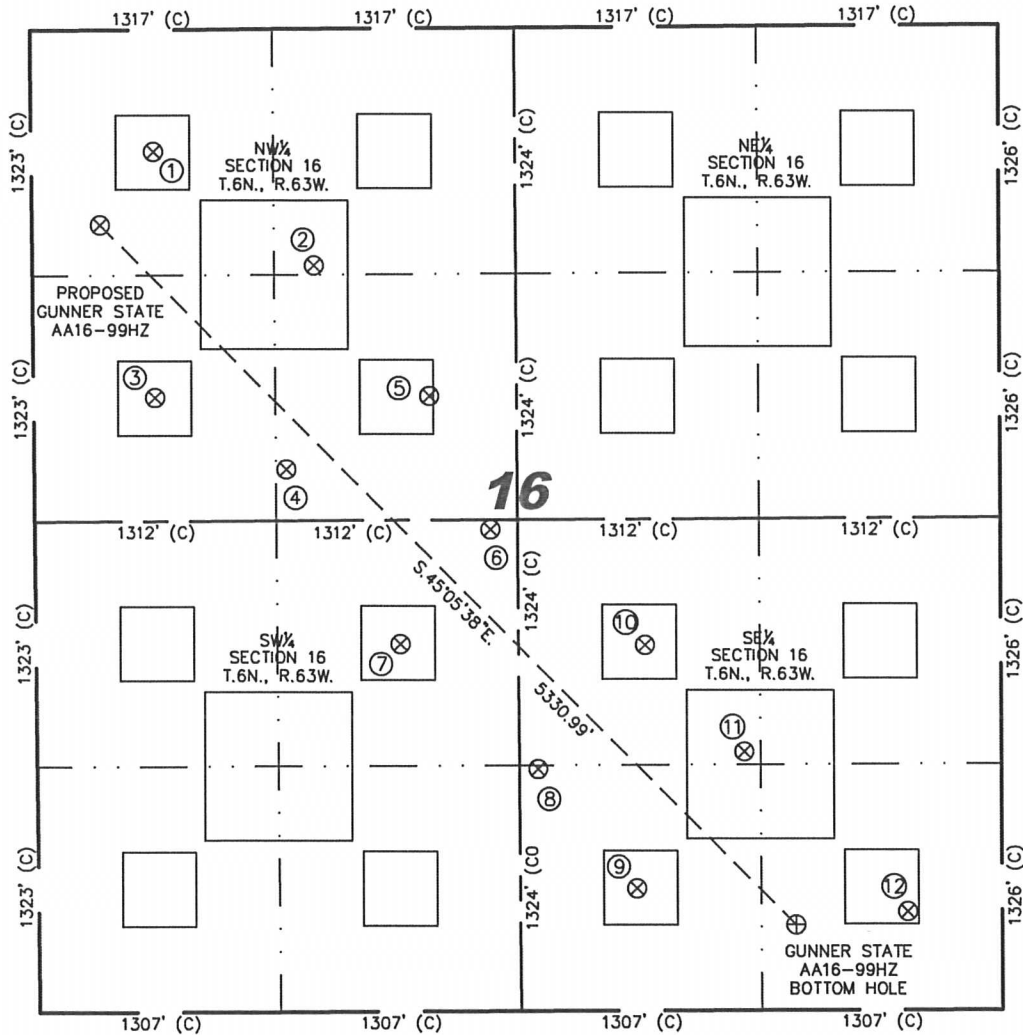
JOB #: 10086

Completed 08/10/2010



SITE SKETCH – GUNNER STATE AA16-99HZ

SECTION 16
TOWNSHIP 6 NORTH
RANGE 63 WEST



① BASHOR STATE AA16-04 NW/NW SEC. 16 656' FNL 663' FWL EL 4684' N 40.49215 W 104.44908 PDOP 1.7	② BASHOR STATE AA16-19 NE/NW SEC. 16 1274' FNL 1530' FWL EL 4683' N 40.49044 W 104.44597 PDOP 2.2	③ BASHOR STATE AA16-5 SW/NW SEC. 16 1980' FNL 659' FWL EL 4676' N 40.48851 W 104.44911 PDOP 2.2	④ BASHOR STATE AA16-20 SE/NW SEC. 16 2370' FNL 1370' FWL EL 4676' N 40.48744 W 104.44656 PDOP 2.1	⑤ BASHOR STATE AA16-6 SE/NW SEC. 16 1980' FNL 2150' FWL EL 4683' N 40.48850 W 104.44375 PDOP 2.0	⑥ BASHOR STATE AA16-21 NE/SW SEC. 16 2596' FSL 2475' FWL EL 4682' N 40.48652 W 104.44259 PDOP 2.0	⑦ BASHOR STATE AA16-11 NE/SW SEC. 16 1980' FSL 1980' FWL EL 4681' N 40.48483 W 104.44437 PDOP 2.3
⑧ BASHOR STATE AA16-24 SW/SE SEC. 16 1304' FSL 2517' FEL EL 4679' N 40.48296 W 104.44171 PDOP 2.1	⑨ BASHOR STATE AA16-15 SW/SE SEC. 16 659' FSL 1983' FEL EL 4679' N 40.48118 W 104.43982 PDOP 2.1	⑩ BASHOR STATE AA16-10 NW/SE SEC. 16 1971' FSL 1935' FEL EL 4682' N 40.48478 W 104.43960 PDOP 1.7	⑪ BASHOR STATE AA16-23 NW/SE SEC. 16 1394' FSL 1397' FEL EL 4684' N 40.48319 W 104.43769 PDOP 1.9	⑫ BASHOR STATE AA16-16 SE/SE SEC. 16 529' FSL 511' FEL EL 4693' N 40.48080 W 104.43453 PDOP 1.9		

NOTES:

- THIS SKETCH DOES NOT REPRESENT A BOUNDARY SURVEY.
- THE DATUM FOR THE LATITUDES AND LONGITUDES ON THIS SKETCH IS NAD83.

