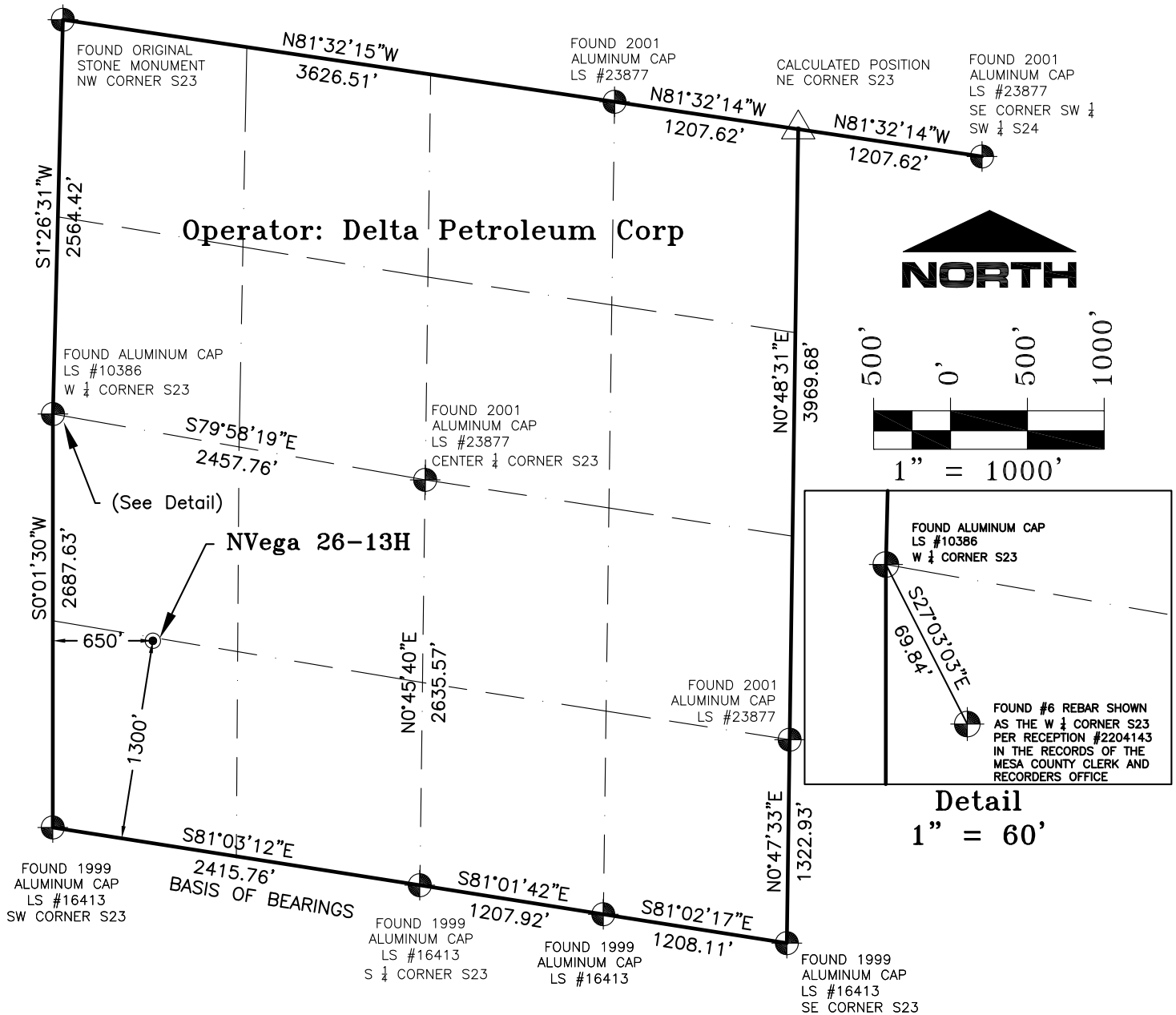


# SECTION 23, T9S, R93W, 6th P.M.



## NOTES:

1. GEODETIC POSITIONS ARE SHOWN IN DECIMAL DEGREES.
2. UNITS OF LINEAR MEASUREMENT: U.S. SURVEY FOOT
3. ELEVATIONS ARE BASED ON GPS OBSERVATIONS USING GEOID 03, NAVD88.
4. ALL SURFACE (SHL) AND BOTTOM (BHL) HOLE LOCATIONS ARE MEASURED AT 90° ANGLES FROM SECTION LINES.
5. BASIS OF BEARING: S81°03'12"E BETWEEN FOUND MONUMENTS AS SHOWN HEREON.
6. EXISTING GROUND ELEVATION: 7599'. PROPOSED PAD ELEVATION: 7597'.
7. GPS OPERATOR: KYLE TESKY OBSERVED AN AVERAGE PDOP OF ≤ 3.0 FOR ALL SURVEY MEASUREMENTS DEPICTED ON THIS AND SUBSEQUENT SHEETS. ALL GPS OBSERVATIONS ARE IN COMPLIANCE WITH COGCC RULE NO. 215
8. SURFACE USE: RANGELAND
9. USGS QUAD MAP: HIGHTOWER MOUNTAIN

## SURVEYORS STATEMENT:

I, ELWOOD BARRY GILES, BEING A REGISTERED LAND SURVEYOR IN THE STATE OF COLORADO, DO HERBY CERTIFY THAT THIS PLAT REPRESENTS A SURVEY PERFORMED BY ME OR UNDER MY DIRECT SUPERVISION AUG 25, 2010 AND IS TRUE TO THE BEST OF MY KNOWLEDGE AND BELIEF.

*Elwood Barry Giles*  
ELWOOD BARRY GILES  
COLORADO LS 38150

9 SEPT, 2010

DATE

WELL No.	SECTION LINES TIES		NAD 83		NAD 27	
NVEGA 26-13H	FOOTAGES	FOOTAGES	LATITUDE	LONGITUDE	LATITUDE	LONGITUDE
SURFACE HOLE	1300' FSL	650' FWL	39.258458°	107.744450°	39.258478°	107.743834°



**SGM INC.**

118 W. 6th Street, Suite 200  
Glenwood Springs, Colorado 81601  
(970) 945-1004 (FAX 945-5948)  
Meeker, Colorado (970) 878-5180

Scale: 1"=1000'

Sheet 1 of 8

NVega 26-13H (SHL)

Well Location Plat for Delta Petroleum Well NVega 26-13H

SW 1/4 SW 1/4 Sect.23, T. 9 S., R. 93 W., 6th P.M., Mesa County, CO

Job# 2010-349.001

Date: 9.9.2010

By: reb

File: 4C\_BM