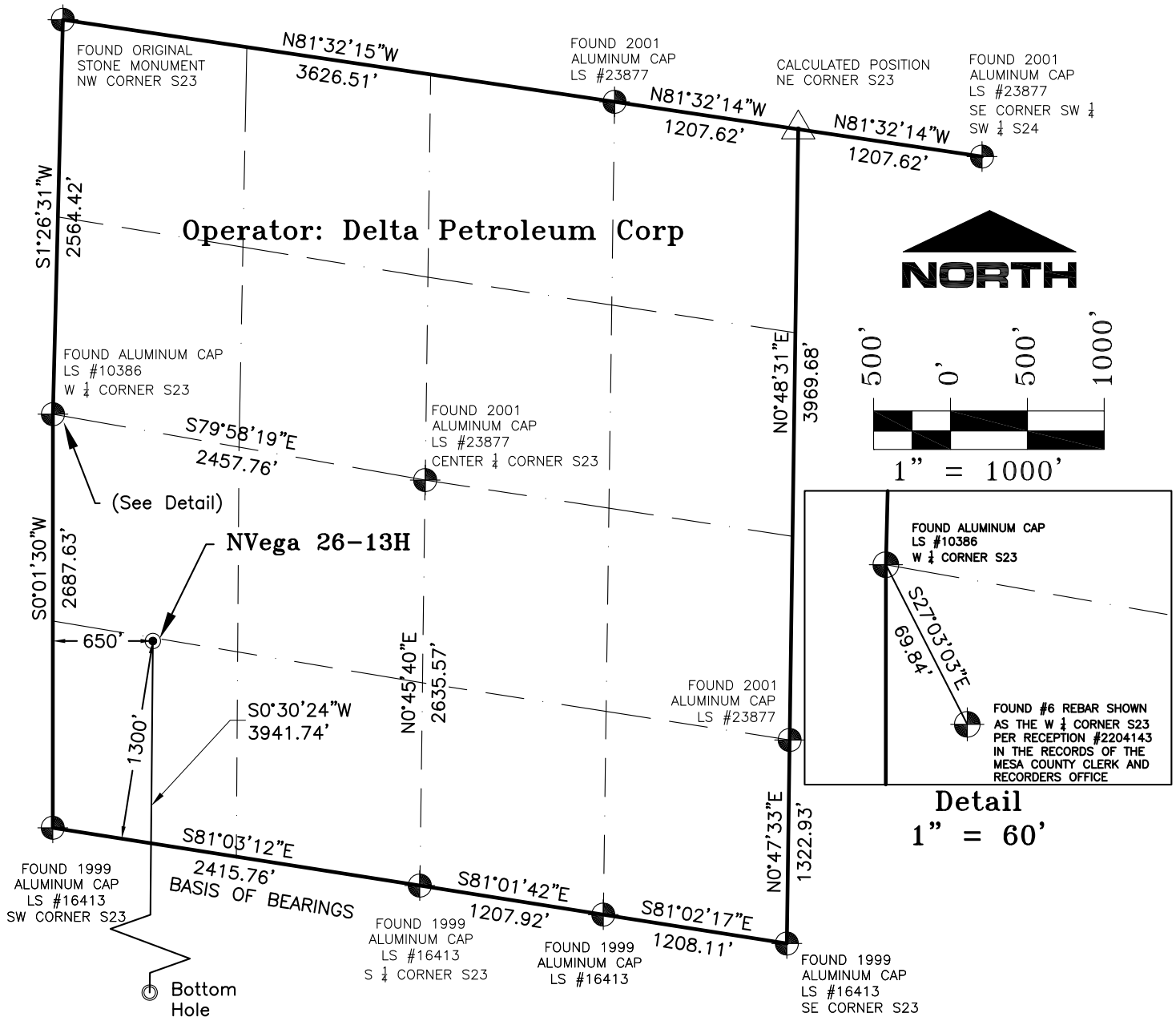


SECTION 23, T9S, R93W, 6th P.M.



NOTES:

1. GEODETIC POSITIONS ARE SHOWN IN DECIMAL DEGREES.
2. UNITS OF LINEAR MEASUREMENT: U.S. SURVEY FOOT
3. ELEVATIONS ARE BASED ON GPS OBSERVATIONS USING GEOID 03, NAVD88.
4. ALL SURFACE (SHL) AND BOTTOM (BHL) HOLE LOCATIONS ARE MEASURED AT 90° ANGLES FROM SECTION LINES.
5. BASIS OF BEARING: S81°03'12"E BETWEEN FOUND MONUMENTS AS SHOWN HEREON.
6. EXISTING GROUND ELEVATION: 7599'. PROPOSED PAD ELEVATION: 7597'.
7. GPS OPERATOR: KYLE TESKY OBSERVED AN AVERAGE PDOP OF ≤ 3.0 FOR ALL SURVEY MEASUREMENTS DEPICTED ON THIS AND SUBSEQUENT SHEETS. ALL GPS OBSERVATIONS ARE IN COMPLIANCE WITH COGCC RULE NO. 215
8. SURFACE USE: RANGELAND
9. USGS QUAD MAP: HIGHTOWER MOUNTAIN

SURVEYORS STATEMENT:

I, ELWOOD BARRY GILES, BEING A REGISTERED LAND SURVEYOR IN THE STATE OF COLORADO, DO HERBY CERTIFY THAT THIS PLAT REPRESENTS A SURVEY PERFORMED BY ME OR UNDER MY DIRECT SUPERVISION AUG 25, 2010 AND IS TRUE TO THE BEST OF MY KNOWLEDGE AND BELIEF.

Elwood Barry Giles
ELWOOD BARRY GILES
COLORADO LS 38150

1 SEPT, 2010

DATE

WELL No.	SECTION LINES TIES		NAD 83		NAD 27	
NVEGA 26-13H	FOOTAGES	FOOTAGES	LATITUDE	LONGITUDE	LATITUDE	LONGITUDE
SURFACE HOLE	1300' FSL	650' FWL	39.258458°	107.744450°	39.258478°	107.743834°
BOTTOM HOLE	2599' FNL	650' FWL	39.247641°	107.744229°	39.247661°	107.743614°



SGM INC.

118 W. 6th Street, Suite 200
Glenwood Springs, Colorado 81601
(970) 945-1004 (FAX 945-5948)
Meeker, Colorado (970) 878-5180

Scale: 1"=1000'

Sheet 1 of 8

NVega 26-13H (SHL)

Well Location Plat for Delta Petroleum Well NVega 26-13H

SW 1/4 SW 1/4 Sect.23, T. 9 S., R. 93 W., 6th P.M., Mesa County, CO

Job# 2010-349.001

Date: 9.1.2010

By: reb

File: 4C_BM

Surface Hole
NVega 26-13H

FOUND 1999
ALUMINUM CAP
LS #16413
NW CORNER S26

FOUND 1999
ALUMINUM CAP
LS #16413
1/4 CORNER S26

FOUND 1999
ALUMINUM CAP
LS #16413

FOUND 1999
ALUMINUM CAP
LS #16413
NE CORNER S26

FOUND 1999
ALUMINUM CAP.
LS #16413
W 1/4
CORNER S26

FOUND 2001
ALUMINUM CAP
LS #23877
CENTER $\frac{1}{4}$ CORNER S26

NVega 26-13H
Bottom Hole

Operator: Delta Petroleum Corp

FOUND 1999
ALUMINUM CAP
LS #16413
SW CORNER S26

FOUND 1999
ALUMINUM CAP
LS #16413

FOUND 1999
ALUMINUM CAP
LS #16413
S $\frac{1}{4}$ CORNER S26

CALCULATED POSITION
SE CORNER S26

File: 4C_BM