



Delta Petroleum

Mesa County, CO

Pad 4C

NVega 26-13H

Wellbore #1

Plan: Preliminary Plan for APD

Standard Planning Report

02 September, 2010

Delta Petroleum
NVega 26-13H
Mesa County, CO

Geodetic System: US State Plane 1983
Zone: Colorado Central Zone
WELL @ 0.0ft (Original Well Elev)
Ground Level: 0.0
Latitude: 39° 15' 30.449 N
Longitude: 107° 44' 40.020 W
Magnetic North is 10.31° East of True North (Magnetic Declination)

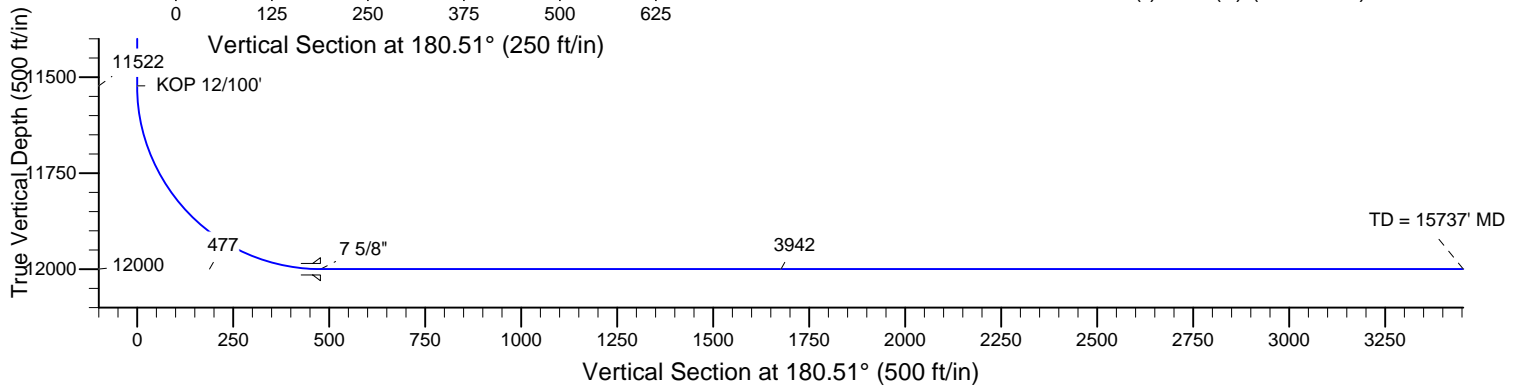
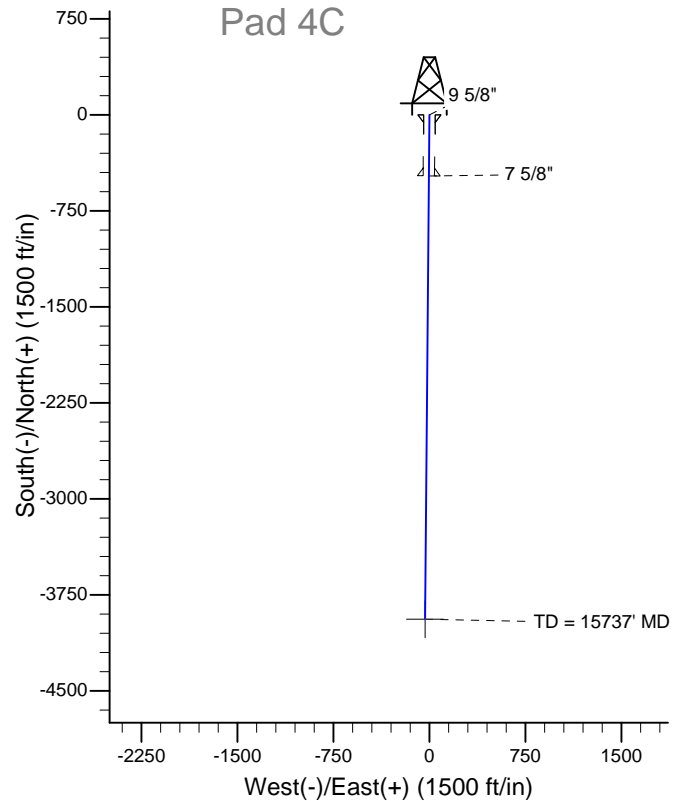
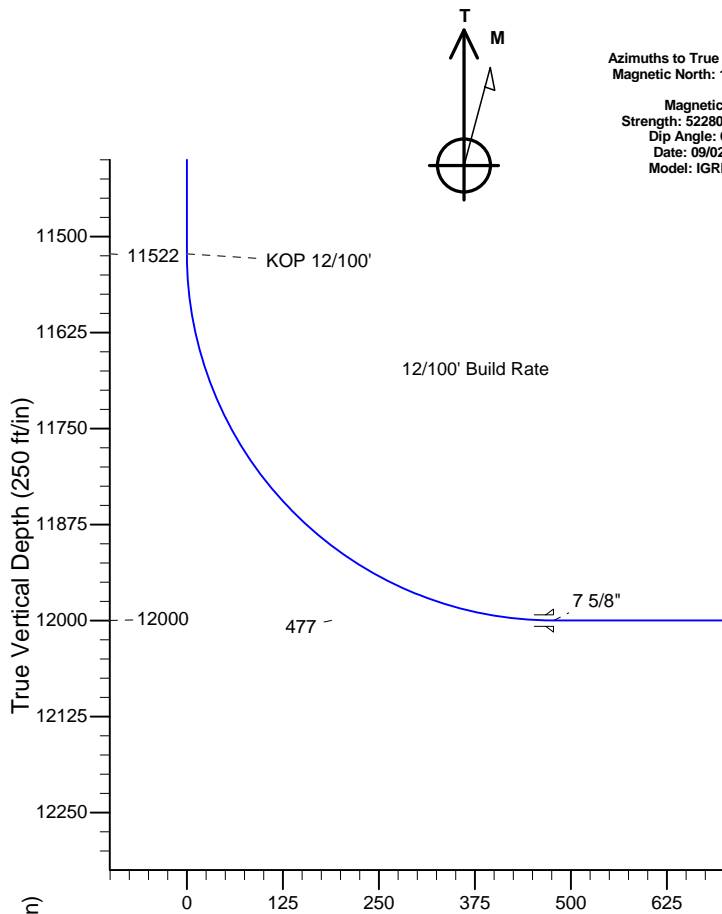


FORMATION TOP DETAILS

No formation data is available

SECTION DETAILS

MD	Inc	Azi	TVD	+N/-S	+E/-W	DLeg	TFace	VSec	
0.0	0.00	0.00	0.0	0.0	0.0	0.00	0.00	0.0	
11522.5	0.00	0.00	11522.5	0.0	0.0	0.00	0.00	0.0	
12272.5	90.00	180.51	12000.0	-477.4	-4.2	12.00	180.51	477.5	
15736.8	90.00	180.51	12000.0	-3941.6	-34.9	0.00	0.00	3941.7	26-13H



WELLBORE TARGET DETAILS (LAT/LONG)

TVD	+N/-S	+E/-W	Latitude	Longitude	Shape
12000.0	-3941.6	-34.9	39° 14' 51.489 N	107° 44' 40.463 W	Point

26-13H

Database:	EDM 2003.16 Single User Db	Local Co-ordinate Reference:	Well NVega 26-13H
Company:	Delta Petroleum	TVD Reference:	WELL @ 0.0ft (Original Well Elev)
Project:	Mesa County, CO	MD Reference:	WELL @ 0.0ft (Original Well Elev)
Site:	Pad 4C	North Reference:	True
Well:	NVega 26-13H	Survey Calculation Method:	Minimum Curvature
Wellbore:	Wellbore #1		
Design:	Preliminary Plan for APD		

Project	Mesa County, CO		
Map System:	US State Plane 1983	System Datum:	Mean Sea Level
Geo Datum:	North American Datum 1983		
Map Zone:	Colorado Central Zone		

Site	Pad 4C				
Site Position:		Northing:	1,526,877.59ft	Latitude:	39° 15' 30.449 N
From:	Lat/Long	Easting:	2,364,542.25ft	Longitude:	107° 44' 40.020 W
Position Uncertainty:	0.0 ft	Slot Radius:	"	Grid Convergence:	-1.42 °

Well	NVega 26-13H					
Well Position	+N/-S	0.0 ft	Northing:	1,526,877.59 ft	Latitude:	39° 15' 30.449 N
	+E/-W	0.0 ft	Easting:	2,364,542.25 ft	Longitude:	107° 44' 40.020 W
Position Uncertainty		0.0 ft	Wellhead Elevation:	ft	Ground Level:	0.0 ft

Wellbore	Wellbore #1				
Magnetics	Model Name	Sample Date	Declination (°)	Dip Angle (°)	Field Strength (nT)
	IGRF2010	09/02/10	10.31	65.61	52,281

Design	Preliminary Plan for APD			
Audit Notes:				
Version:	Phase:	PROTOTYPE	Tie On Depth:	0.0
Vertical Section:	Depth From (TVD) (ft)	+N-S (ft)	+E-W (ft)	Direction (°)
	0.0	0.0	0.0	180.51

Plan Sections										
Measured Depth (ft)	Inclination (°)	Azimuth (°)	Vertical Depth (ft)	+N/-S (ft)	+E/-W (ft)	Dogleg Rate (°/100ft)	Build Rate (°/100ft)	Turn Rate (°/100ft)	TFO (°)	Target
0.0	0.00	0.00	0.0	0.0	0.0	0.00	0.00	0.00	0.00	
11,522.5	0.00	0.00	11,522.5	0.0	0.0	0.00	0.00	0.00	0.00	
12,272.5	90.00	180.51	12,000.0	-477.4	-4.2	12.00	12.00	0.00	180.51	
15,736.8	90.00	180.51	12,000.0	-3,941.6	-34.9	0.00	0.00	0.00	0.00	26-13H



Crescent Directional Drilling, LP

Planning Report

Database:	EDM 2003.16 Single User Db	Local Co-ordinate Reference:	Well NVega 26-13H
Company:	Delta Petroleum	TVD Reference:	WELL @ 0.0ft (Original Well Elev)
Project:	Mesa County, CO	MD Reference:	WELL @ 0.0ft (Original Well Elev)
Site:	Pad 4C	North Reference:	True
Well:	NVega 26-13H	Survey Calculation Method:	Minimum Curvature
Wellbore:	Wellbore #1		
Design:	Preliminary Plan for APD		

Planned Survey									
Measured Depth (ft)	Inclination (°)	Azimuth (°)	Vertical Depth (ft)	+N/-S (ft)	+E/-W (ft)	Vertical Section (ft)	Dogleg Rate (°/100ft)	Build Rate (°/100ft)	Turn Rate (°/100ft)
0.0	0.00	0.00	0.0	0.0	0.0	0.0	0.00	0.00	0.00
100.0	0.00	0.00	100.0	0.0	0.0	0.0	0.00	0.00	0.00
200.0	0.00	0.00	200.0	0.0	0.0	0.0	0.00	0.00	0.00
300.0	0.00	0.00	300.0	0.0	0.0	0.0	0.00	0.00	0.00
400.0	0.00	0.00	400.0	0.0	0.0	0.0	0.00	0.00	0.00
500.0	0.00	0.00	500.0	0.0	0.0	0.0	0.00	0.00	0.00
600.0	0.00	0.00	600.0	0.0	0.0	0.0	0.00	0.00	0.00
700.0	0.00	0.00	700.0	0.0	0.0	0.0	0.00	0.00	0.00
800.0	0.00	0.00	800.0	0.0	0.0	0.0	0.00	0.00	0.00
900.0	0.00	0.00	900.0	0.0	0.0	0.0	0.00	0.00	0.00
1,000.0	0.00	0.00	1,000.0	0.0	0.0	0.0	0.00	0.00	0.00
1,100.0	0.00	0.00	1,100.0	0.0	0.0	0.0	0.00	0.00	0.00
1,200.0	0.00	0.00	1,200.0	0.0	0.0	0.0	0.00	0.00	0.00
1,300.0	0.00	0.00	1,300.0	0.0	0.0	0.0	0.00	0.00	0.00
1,400.0	0.00	0.00	1,400.0	0.0	0.0	0.0	0.00	0.00	0.00
1,500.0	0.00	0.00	1,500.0	0.0	0.0	0.0	0.00	0.00	0.00
1,600.0	0.00	0.00	1,600.0	0.0	0.0	0.0	0.00	0.00	0.00
1,700.0	0.00	0.00	1,700.0	0.0	0.0	0.0	0.00	0.00	0.00
1,800.0	0.00	0.00	1,800.0	0.0	0.0	0.0	0.00	0.00	0.00
1,900.0	0.00	0.00	1,900.0	0.0	0.0	0.0	0.00	0.00	0.00
2,000.0	0.00	0.00	2,000.0	0.0	0.0	0.0	0.00	0.00	0.00
2,100.0	0.00	0.00	2,100.0	0.0	0.0	0.0	0.00	0.00	0.00
2,200.0	0.00	0.00	2,200.0	0.0	0.0	0.0	0.00	0.00	0.00
13 3/8"									
2,300.0	0.00	0.00	2,300.0	0.0	0.0	0.0	0.00	0.00	0.00
2,400.0	0.00	0.00	2,400.0	0.0	0.0	0.0	0.00	0.00	0.00
2,500.0	0.00	0.00	2,500.0	0.0	0.0	0.0	0.00	0.00	0.00
2,600.0	0.00	0.00	2,600.0	0.0	0.0	0.0	0.00	0.00	0.00
2,700.0	0.00	0.00	2,700.0	0.0	0.0	0.0	0.00	0.00	0.00
2,800.0	0.00	0.00	2,800.0	0.0	0.0	0.0	0.00	0.00	0.00
2,900.0	0.00	0.00	2,900.0	0.0	0.0	0.0	0.00	0.00	0.00
3,000.0	0.00	0.00	3,000.0	0.0	0.0	0.0	0.00	0.00	0.00
3,100.0	0.00	0.00	3,100.0	0.0	0.0	0.0	0.00	0.00	0.00
3,200.0	0.00	0.00	3,200.0	0.0	0.0	0.0	0.00	0.00	0.00
3,300.0	0.00	0.00	3,300.0	0.0	0.0	0.0	0.00	0.00	0.00
3,400.0	0.00	0.00	3,400.0	0.0	0.0	0.0	0.00	0.00	0.00
3,500.0	0.00	0.00	3,500.0	0.0	0.0	0.0	0.00	0.00	0.00
3,600.0	0.00	0.00	3,600.0	0.0	0.0	0.0	0.00	0.00	0.00
3,700.0	0.00	0.00	3,700.0	0.0	0.0	0.0	0.00	0.00	0.00
3,800.0	0.00	0.00	3,800.0	0.0	0.0	0.0	0.00	0.00	0.00
3,900.0	0.00	0.00	3,900.0	0.0	0.0	0.0	0.00	0.00	0.00
4,000.0	0.00	0.00	4,000.0	0.0	0.0	0.0	0.00	0.00	0.00
4,100.0	0.00	0.00	4,100.0	0.0	0.0	0.0	0.00	0.00	0.00
4,200.0	0.00	0.00	4,200.0	0.0	0.0	0.0	0.00	0.00	0.00
4,300.0	0.00	0.00	4,300.0	0.0	0.0	0.0	0.00	0.00	0.00
4,400.0	0.00	0.00	4,400.0	0.0	0.0	0.0	0.00	0.00	0.00
4,500.0	0.00	0.00	4,500.0	0.0	0.0	0.0	0.00	0.00	0.00
4,600.0	0.00	0.00	4,600.0	0.0	0.0	0.0	0.00	0.00	0.00
4,700.0	0.00	0.00	4,700.0	0.0	0.0	0.0	0.00	0.00	0.00
4,800.0	0.00	0.00	4,800.0	0.0	0.0	0.0	0.00	0.00	0.00
4,900.0	0.00	0.00	4,900.0	0.0	0.0	0.0	0.00	0.00	0.00
5,000.0	0.00	0.00	5,000.0	0.0	0.0	0.0	0.00	0.00	0.00
5,100.0	0.00	0.00	5,100.0	0.0	0.0	0.0	0.00	0.00	0.00



Crescent Directional Drilling, LP

Planning Report

Database: EDM 2003.16 Single User Db
Company: Delta Petroleum
Project: Mesa County, CO
Site: Pad 4C
Well: NVega 26-13H
Wellbore: Wellbore #1
Design: Preliminary Plan for APD

Local Co-ordinate Reference: Well NVega 26-13H
TVD Reference: WELL @ 0.0ft (Original Well Elev)
MD Reference: WELL @ 0.0ft (Original Well Elev)
North Reference: True
Survey Calculation Method: Minimum Curvature

Planned Survey

Measured Depth (ft)	Inclination (°)	Azimuth (°)	Vertical Depth (ft)	+N/-S (ft)	+E/-W (ft)	Vertical Section (ft)	Dogleg Rate (°/100ft)	Build Rate (°/100ft)	Turn Rate (°/100ft)
5,200.0	0.00	0.00	5,200.0	0.0	0.0	0.0	0.00	0.00	0.00
5,300.0	0.00	0.00	5,300.0	0.0	0.0	0.0	0.00	0.00	0.00
5,400.0	0.00	0.00	5,400.0	0.0	0.0	0.0	0.00	0.00	0.00
5,500.0	0.00	0.00	5,500.0	0.0	0.0	0.0	0.00	0.00	0.00
5,600.0	0.00	0.00	5,600.0	0.0	0.0	0.0	0.00	0.00	0.00
5,700.0	0.00	0.00	5,700.0	0.0	0.0	0.0	0.00	0.00	0.00
5,800.0	0.00	0.00	5,800.0	0.0	0.0	0.0	0.00	0.00	0.00
5,900.0	0.00	0.00	5,900.0	0.0	0.0	0.0	0.00	0.00	0.00
6,000.0	0.00	0.00	6,000.0	0.0	0.0	0.0	0.00	0.00	0.00
6,100.0	0.00	0.00	6,100.0	0.0	0.0	0.0	0.00	0.00	0.00
6,200.0	0.00	0.00	6,200.0	0.0	0.0	0.0	0.00	0.00	0.00
6,300.0	0.00	0.00	6,300.0	0.0	0.0	0.0	0.00	0.00	0.00
6,400.0	0.00	0.00	6,400.0	0.0	0.0	0.0	0.00	0.00	0.00
6,500.0	0.00	0.00	6,500.0	0.0	0.0	0.0	0.00	0.00	0.00
6,600.0	0.00	0.00	6,600.0	0.0	0.0	0.0	0.00	0.00	0.00
6,700.0	0.00	0.00	6,700.0	0.0	0.0	0.0	0.00	0.00	0.00
6,800.0	0.00	0.00	6,800.0	0.0	0.0	0.0	0.00	0.00	0.00
6,900.0	0.00	0.00	6,900.0	0.0	0.0	0.0	0.00	0.00	0.00
7,000.0	0.00	0.00	7,000.0	0.0	0.0	0.0	0.00	0.00	0.00
7,100.0	0.00	0.00	7,100.0	0.0	0.0	0.0	0.00	0.00	0.00
7,200.0	0.00	0.00	7,200.0	0.0	0.0	0.0	0.00	0.00	0.00
7,300.0	0.00	0.00	7,300.0	0.0	0.0	0.0	0.00	0.00	0.00
7,400.0	0.00	0.00	7,400.0	0.0	0.0	0.0	0.00	0.00	0.00
7,500.0	0.00	0.00	7,500.0	0.0	0.0	0.0	0.00	0.00	0.00
7,600.0	0.00	0.00	7,600.0	0.0	0.0	0.0	0.00	0.00	0.00
7,700.0	0.00	0.00	7,700.0	0.0	0.0	0.0	0.00	0.00	0.00
7,800.0	0.00	0.00	7,800.0	0.0	0.0	0.0	0.00	0.00	0.00
7,900.0	0.00	0.00	7,900.0	0.0	0.0	0.0	0.00	0.00	0.00
8,000.0	0.00	0.00	8,000.0	0.0	0.0	0.0	0.00	0.00	0.00
8,100.0	0.00	0.00	8,100.0	0.0	0.0	0.0	0.00	0.00	0.00
8,200.0	0.00	0.00	8,200.0	0.0	0.0	0.0	0.00	0.00	0.00
8,300.0	0.00	0.00	8,300.0	0.0	0.0	0.0	0.00	0.00	0.00
8,400.0	0.00	0.00	8,400.0	0.0	0.0	0.0	0.00	0.00	0.00
8,500.0	0.00	0.00	8,500.0	0.0	0.0	0.0	0.00	0.00	0.00
9 5/8"									
8,600.0	0.00	0.00	8,600.0	0.0	0.0	0.0	0.00	0.00	0.00
8,700.0	0.00	0.00	8,700.0	0.0	0.0	0.0	0.00	0.00	0.00
8,800.0	0.00	0.00	8,800.0	0.0	0.0	0.0	0.00	0.00	0.00
8,900.0	0.00	0.00	8,900.0	0.0	0.0	0.0	0.00	0.00	0.00
9,000.0	0.00	0.00	9,000.0	0.0	0.0	0.0	0.00	0.00	0.00
9,100.0	0.00	0.00	9,100.0	0.0	0.0	0.0	0.00	0.00	0.00
9,200.0	0.00	0.00	9,200.0	0.0	0.0	0.0	0.00	0.00	0.00
9,300.0	0.00	0.00	9,300.0	0.0	0.0	0.0	0.00	0.00	0.00
9,400.0	0.00	0.00	9,400.0	0.0	0.0	0.0	0.00	0.00	0.00
9,500.0	0.00	0.00	9,500.0	0.0	0.0	0.0	0.00	0.00	0.00
9,600.0	0.00	0.00	9,600.0	0.0	0.0	0.0	0.00	0.00	0.00
9,700.0	0.00	0.00	9,700.0	0.0	0.0	0.0	0.00	0.00	0.00
9,800.0	0.00	0.00	9,800.0	0.0	0.0	0.0	0.00	0.00	0.00
9,900.0	0.00	0.00	9,900.0	0.0	0.0	0.0	0.00	0.00	0.00
10,000.0	0.00	0.00	10,000.0	0.0	0.0	0.0	0.00	0.00	0.00
10,100.0	0.00	0.00	10,100.0	0.0	0.0	0.0	0.00	0.00	0.00
10,200.0	0.00	0.00	10,200.0	0.0	0.0	0.0	0.00	0.00	0.00
10,300.0	0.00	0.00	10,300.0	0.0	0.0	0.0	0.00	0.00	0.00

Database:	EDM 2003.16 Single User Db	Local Co-ordinate Reference:	Well NVega 26-13H
Company:	Delta Petroleum	TVD Reference:	WELL @ 0.0ft (Original Well Elev)
Project:	Mesa County, CO	MD Reference:	WELL @ 0.0ft (Original Well Elev)
Site:	Pad 4C	North Reference:	True
Well:	NVega 26-13H	Survey Calculation Method:	Minimum Curvature
Wellbore:	Wellbore #1		
Design:	Preliminary Plan for APD		

Planned Survey

Measured Depth (ft)	Inclination (°)	Azimuth (°)	Vertical Depth (ft)	+N/-S (ft)	+E/-W (ft)	Vertical Section (ft)	Dogleg Rate (°/100ft)	Build Rate (°/100ft)	Turn Rate (°/100ft)
10,400.0	0.00	0.00	10,400.0	0.0	0.0	0.0	0.00	0.00	0.00
10,500.0	0.00	0.00	10,500.0	0.0	0.0	0.0	0.00	0.00	0.00
10,600.0	0.00	0.00	10,600.0	0.0	0.0	0.0	0.00	0.00	0.00
10,700.0	0.00	0.00	10,700.0	0.0	0.0	0.0	0.00	0.00	0.00
10,800.0	0.00	0.00	10,800.0	0.0	0.0	0.0	0.00	0.00	0.00
10,900.0	0.00	0.00	10,900.0	0.0	0.0	0.0	0.00	0.00	0.00
11,000.0	0.00	0.00	11,000.0	0.0	0.0	0.0	0.00	0.00	0.00
11,100.0	0.00	0.00	11,100.0	0.0	0.0	0.0	0.00	0.00	0.00
11,200.0	0.00	0.00	11,200.0	0.0	0.0	0.0	0.00	0.00	0.00
11,300.0	0.00	0.00	11,300.0	0.0	0.0	0.0	0.00	0.00	0.00
11,400.0	0.00	0.00	11,400.0	0.0	0.0	0.0	0.00	0.00	0.00
11,500.0	0.00	0.00	11,500.0	0.0	0.0	0.0	0.00	0.00	0.00
11,522.5	0.00	0.00	11,522.5	0.0	0.0	0.0	0.00	0.00	0.00
KOP 12/100'									
11,600.0	9.30	180.51	11,599.7	-6.3	-0.1	6.3	12.00	12.00	0.00
11,700.0	21.30	180.51	11,695.9	-32.6	-0.3	32.6	12.00	12.00	0.00
11,800.0	33.30	180.51	11,784.6	-78.4	-0.7	78.4	12.00	12.00	0.00
11,900.0	45.30	180.51	11,861.9	-141.6	-1.3	141.6	12.00	12.00	0.00
12,000.0	57.30	180.51	11,924.3	-219.5	-1.9	219.5	12.00	12.00	0.00
12,100.0	69.30	180.51	11,969.1	-308.7	-2.7	308.7	12.00	12.00	0.00
12,200.0	81.30	180.51	11,994.5	-405.2	-3.6	405.2	12.00	12.00	0.00
12,272.5	90.00	180.51	12,000.0	-477.4	-4.2	477.5	12.00	12.00	0.00
EOB Hold 90 Deg - 7 5/8"									
12,300.0	90.00	180.51	12,000.0	-504.9	-4.5	505.0	0.00	0.00	0.00
12,400.0	90.00	180.51	12,000.0	-604.9	-5.3	605.0	0.00	0.00	0.00
12,500.0	90.00	180.51	12,000.0	-704.9	-6.2	705.0	0.00	0.00	0.00
12,600.0	90.00	180.51	12,000.0	-804.9	-7.1	805.0	0.00	0.00	0.00
12,700.0	90.00	180.51	12,000.0	-904.9	-8.0	905.0	0.00	0.00	0.00
12,800.0	90.00	180.51	12,000.0	-1,004.9	-8.9	1,005.0	0.00	0.00	0.00
12,900.0	90.00	180.51	12,000.0	-1,104.9	-9.8	1,105.0	0.00	0.00	0.00
13,000.0	90.00	180.51	12,000.0	-1,204.9	-10.7	1,205.0	0.00	0.00	0.00
13,100.0	90.00	180.51	12,000.0	-1,304.9	-11.5	1,305.0	0.00	0.00	0.00
13,200.0	90.00	180.51	12,000.0	-1,404.9	-12.4	1,405.0	0.00	0.00	0.00
13,300.0	90.00	180.51	12,000.0	-1,504.9	-13.3	1,505.0	0.00	0.00	0.00
13,400.0	90.00	180.51	12,000.0	-1,604.9	-14.2	1,605.0	0.00	0.00	0.00
13,500.0	90.00	180.51	12,000.0	-1,704.9	-15.1	1,705.0	0.00	0.00	0.00
13,600.0	90.00	180.51	12,000.0	-1,804.9	-16.0	1,805.0	0.00	0.00	0.00
13,700.0	90.00	180.51	12,000.0	-1,904.9	-16.8	1,905.0	0.00	0.00	0.00
13,800.0	90.00	180.51	12,000.0	-2,004.9	-17.7	2,005.0	0.00	0.00	0.00
13,900.0	90.00	180.51	12,000.0	-2,104.9	-18.6	2,105.0	0.00	0.00	0.00
14,000.0	90.00	180.51	12,000.0	-2,204.9	-19.5	2,205.0	0.00	0.00	0.00
14,100.0	90.00	180.51	12,000.0	-2,304.9	-20.4	2,305.0	0.00	0.00	0.00
14,200.0	90.00	180.51	12,000.0	-2,404.9	-21.3	2,405.0	0.00	0.00	0.00
14,300.0	90.00	180.51	12,000.0	-2,504.9	-22.2	2,505.0	0.00	0.00	0.00
14,400.0	90.00	180.51	12,000.0	-2,604.9	-23.0	2,605.0	0.00	0.00	0.00
14,500.0	90.00	180.51	12,000.0	-2,704.9	-23.9	2,705.0	0.00	0.00	0.00
14,600.0	90.00	180.51	12,000.0	-2,804.9	-24.8	2,805.0	0.00	0.00	0.00
14,700.0	90.00	180.51	12,000.0	-2,904.9	-25.7	2,905.0	0.00	0.00	0.00
14,800.0	90.00	180.51	12,000.0	-3,004.8	-26.6	3,005.0	0.00	0.00	0.00
14,900.0	90.00	180.51	12,000.0	-3,104.8	-27.5	3,105.0	0.00	0.00	0.00
15,000.0	90.00	180.51	12,000.0	-3,204.8	-28.3	3,205.0	0.00	0.00	0.00
15,100.0	90.00	180.51	12,000.0	-3,304.8	-29.2	3,305.0	0.00	0.00	0.00
15,200.0	90.00	180.51	12,000.0	-3,404.8	-30.1	3,405.0	0.00	0.00	0.00

Database:	EDM 2003.16 Single User Db	Local Co-ordinate Reference:	Well NVega 26-13H
Company:	Delta Petroleum	TVD Reference:	WELL @ 0.0ft (Original Well Elev)
Project:	Mesa County, CO	MD Reference:	WELL @ 0.0ft (Original Well Elev)
Site:	Pad 4C	North Reference:	True
Well:	NVega 26-13H	Survey Calculation Method:	Minimum Curvature
Wellbore:	Wellbore #1		
Design:	Preliminary Plan for APD		

Planned Survey									
Measured Depth (ft)	Inclination (°)	Azimuth (°)	Vertical Depth (ft)	+N/-S (ft)	+E/-W (ft)	Vertical Section (ft)	Dogleg Rate (°/100ft)	Build Rate (°/100ft)	Turn Rate (°/100ft)
15,300.0	90.00	180.51	12,000.0	-3,504.8	-31.0	3,505.0	0.00	0.00	0.00
15,400.0	90.00	180.51	12,000.0	-3,604.8	-31.9	3,605.0	0.00	0.00	0.00
15,500.0	90.00	180.51	12,000.0	-3,704.8	-32.8	3,705.0	0.00	0.00	0.00
15,600.0	90.00	180.51	12,000.0	-3,804.8	-33.6	3,805.0	0.00	0.00	0.00
15,700.0	90.00	180.51	12,000.0	-3,904.8	-34.5	3,905.0	0.00	0.00	0.00
15,736.7	90.00	180.51	12,000.0	-3,941.5	-34.9	3,941.7	0.00	0.00	0.00
TD = 15737' MD									
15,736.8	90.00	180.51	12,000.0	-3,941.6	-34.9	3,941.7	0.00	0.00	0.00
26-13H									

Targets									
Target Name	Dip Angle (°)	Dip Dir. (°)	TVD (ft)	+N/-S (ft)	+E/-W (ft)	Northing (ft)	Easting (ft)	Latitude	Longitude
- hit/miss target									
- Shape									
26-13H	0.00	0.00	12,000.0	-3,941.6	-34.9	1,522,938.07	2,364,410.03	39° 14' 51.489 N	107° 44' 40.463 W
- plan hits target center									
- Point									

Casing Points					
Measured Depth (ft)	Vertical Depth (ft)	Name	Casing Diameter (")	Hole Diameter (")	
2,200.0	2,200.0	13 3/8"	13-3/8	17-1/2	
8,500.0	8,500.0	9 5/8"	9-5/8	12-1/4	
12,272.5	12,000.0	7 5/8"	7-5/8	8-3/4	

Plan Annotations				
Measured Depth (ft)	Vertical Depth (ft)	Local Coordinates		Comment
		+N/-S (ft)	+E/-W (ft)	
11,522.5	11,522.5	0.0	0.0	KOP 12/100'
12,272.5	12,000.0	-477.4	-4.2	EOB Hold 90 Deg
15,736.7	12,000.0	-3,941.5	-34.9	TD = 15737' MD