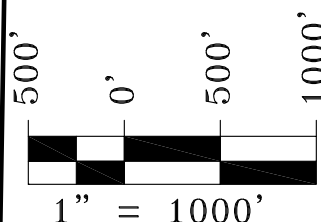
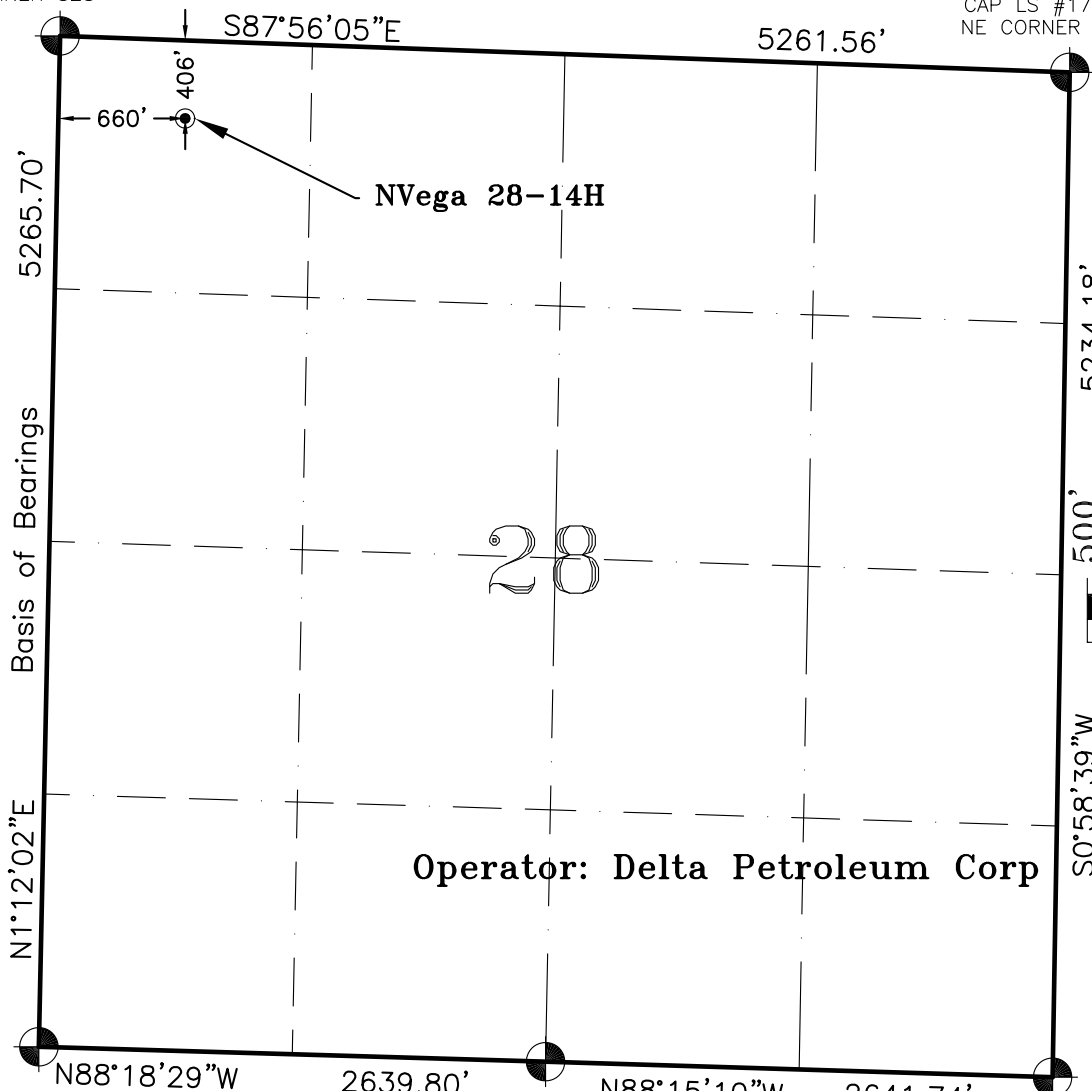


# T9S, R93W, 6th P.M.

FOUND ORIGINAL  
STONE MONUMENT  
NW CORNER S28

FOUND ALUMINUM  
CAP LS #17492  
NE CORNER S28



Operator: Delta Petroleum Corp

FOUND 1990 BLM  
ALUMINUM CAP SW  
CORNER S28

FOUND 1990  
BLM ALUMINUM  
CAP S 1/4  
CORNER S28

FOUND 1990  
BLM ALUMINUM  
CAP SE  
CORNER S28

## NOTES:

1. GEODETIC POSITIONS ARE SHOWN IN DECIMAL DEGREES.
2. UNITS OF LINEAR MEASUREMENT: U.S. SURVEY FOOT
3. ELEVATIONS ARE BASED ON GPS OBSERVATIONS USING GEOID 03, NAVD88.
4. ALL SURFACE (SHL) AND BOTTOM (BHL) HOLE LOCATIONS ARE MEASURED AT 90° ANGLES FROM SECTION LINES.
5. BASIS OF BEARING: N01°12'02"E BETWEEN FOUND MONUMENTS AS SHOWN HEREON.
6. EXISTING GROUND ELEVATION: 7511'. PROPOSED PAD ELEVATION: 7513.80'.
7. GPS OPERATOR: KYLE TESKY OBSERVED AN AVERAGE PDOP OF  $\leq 3.0$  FOR ALL SURVEY MEASUREMENTS DEPICTED ON THIS AND SUBSEQUENT SHEETS. ALL GPS OBSERVATIONS ARE IN COMPLIANCE WITH COGCC RULE NO. 215
8. SURFACE USE: RANGELAND
9. USGS QUAD MAP: VEGA RESERVOIR

## SURVEYORS STATEMENT:

I, ELWOOD BARRY GILES, BEING A REGISTERED LAND SURVEYOR IN THE STATE OF COLORADO, DO HERBY CERTIFY THAT THIS PLAT REPRESENTS A SURVEY PERFORMED BY ME OR UNDER MY DIRECT SUPERVISION AUGUST 25, 2010 AND IS TRUE TO THE BEST OF MY KNOWLEDGE AND BELIEF.

*Elwood Barry Giles*

9 SEPT, 2010

ELWOOD BARRY GILES  
COLORADO LS 38150

DATE

WELL No.	SECTION LINES TIES		NAD 83		NAD 27	
NVEGA 28-14H	FOOTAGES	FOOTAGES	LATITUDE	LONGITUDE	LATITUDE	LONGITUDE
SURFACE HOLE	406' FNL	660' FWL	39.254245'	107.781475'	39.254265'	107.780858'



SGM INC.

118 W. 6th Street, Suite 200  
Glenwood Springs, Colorado 81601  
(970) 945-1004 (FAX 945-5948)  
Meeker, Colorado (970) 878-5180

Scale: 1"=1000'

Sheet No. 1 of 8

NVega 28-14H SHL

Well Location Plat for Delta Petroleum Well NVega 28-14H

NW 1/4 NW 1/4 Sect.28, T. 9 S., R. 93 W., 6th P.M., Mesa County, CO

Job# 2010-349.001

Date: 9.9.2010

By: reb

File: 9C\_BM