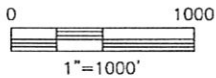
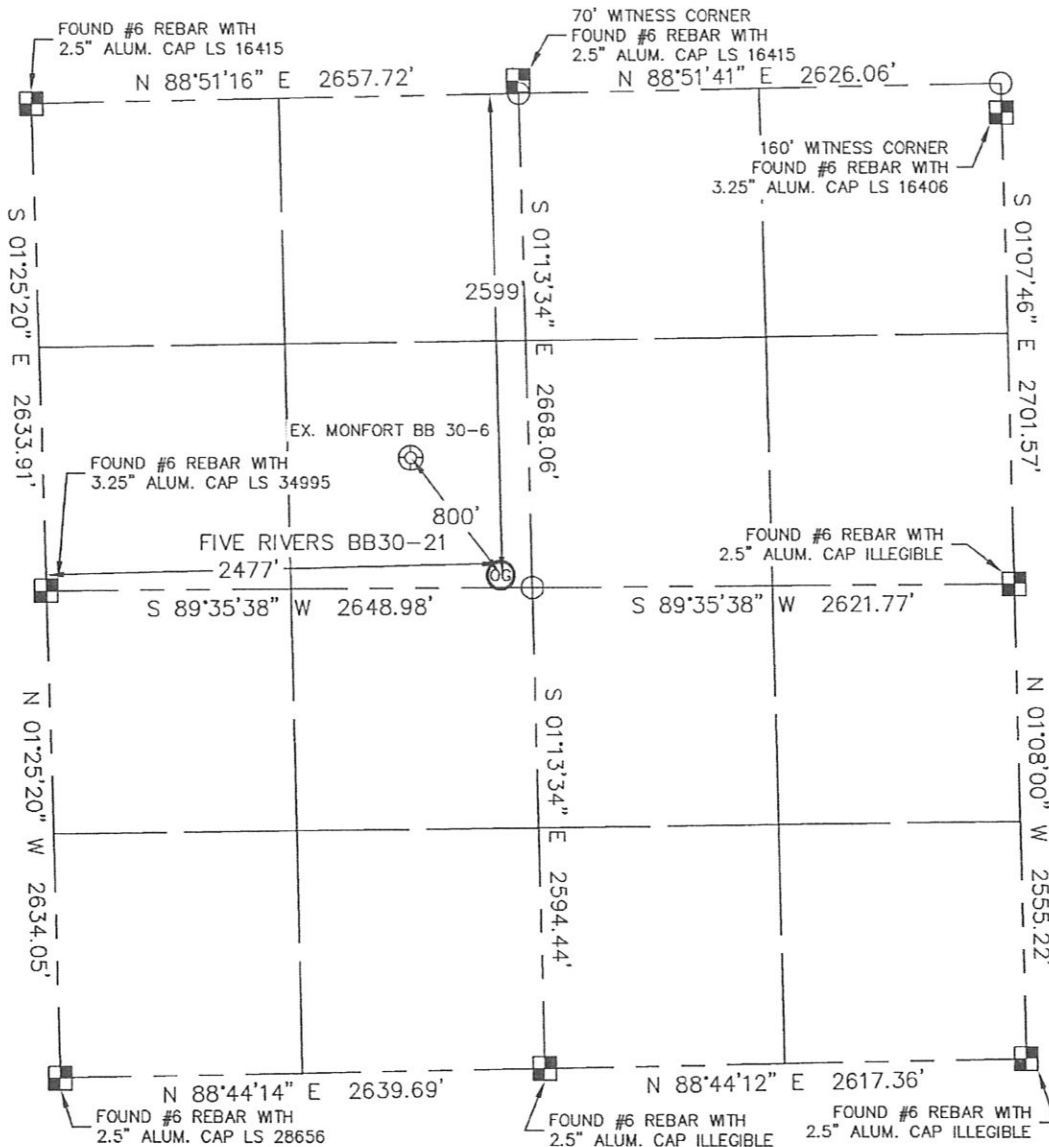


WELL LOCATION CERTIFICATE

THIS MAP DOES NOT REPRESENT A BOUNDARY SURVEY

SECTION: 30
TOWNSHIP: 5N
RANGE: 63W



In accordance with a request from JOE MARTIN with Noble Energy Inc. Lat40°, LLC has determined the surface location of the FIVE RIVERS BB30-21 to be 2599' from the NORTH line and 2477' from the WEST line as measured at right angles from the section line of Section 30, Township 5 North, Range 63 West of the Sixth Principal Meridian, County of Weld, State of Colorado.

I hereby state that this Well Location Certificate was prepared by me, or under my direct supervision, that the fieldwork was completed on 5/10/10, for and on behalf of Noble Energy Inc. That this is not a Land Survey Plat or an Improvement Survey Plat, and that it is not to be relied upon for establishment of fence, building, or other future improvement lines.

NOTE:

- 1) Bearings shown are Grid Bearings of the Colorado State Plane Coordinate System, North Zone, North American Datum 1983/2007. The lined dimensions as contained herein are based upon the "U.S. Survey Foot."
- 2) Ground elevations are based on an observed GPS elevation (NAVD 1988 DATUM).
- 3) NEAREST EXISTING WELL: EX. MONFORT BB 30-6 800'
- 4) IMPROVEMENTS: See VISIBLE IMPROVEMENTS exhibit for all visible improvements within 400' of disturbed area.
- 5) SURFACE USE: IRRIGATED CROP FIELD

SURFACE LOCATION

LATITUDE: 40.37051°N
LONGITUDE: 104.47969°W
PDOP: 1.5
ELEV: 4577
1/4, 1/4: SE1/4NW1/4
NEAREST PROPERTY LINE:
67' SOUTH, 171' EAST, 185' SOUTHEAST



NOTE

According to Colorado law, you must commence any legal action based upon any defect in this W.L.C. within three years after you discover such defect. In no event, may any action based upon any defect in this survey be commenced more than ten years after the date of the certificate shown hereon. (13-80-105 C.R.S.)

LEGEND

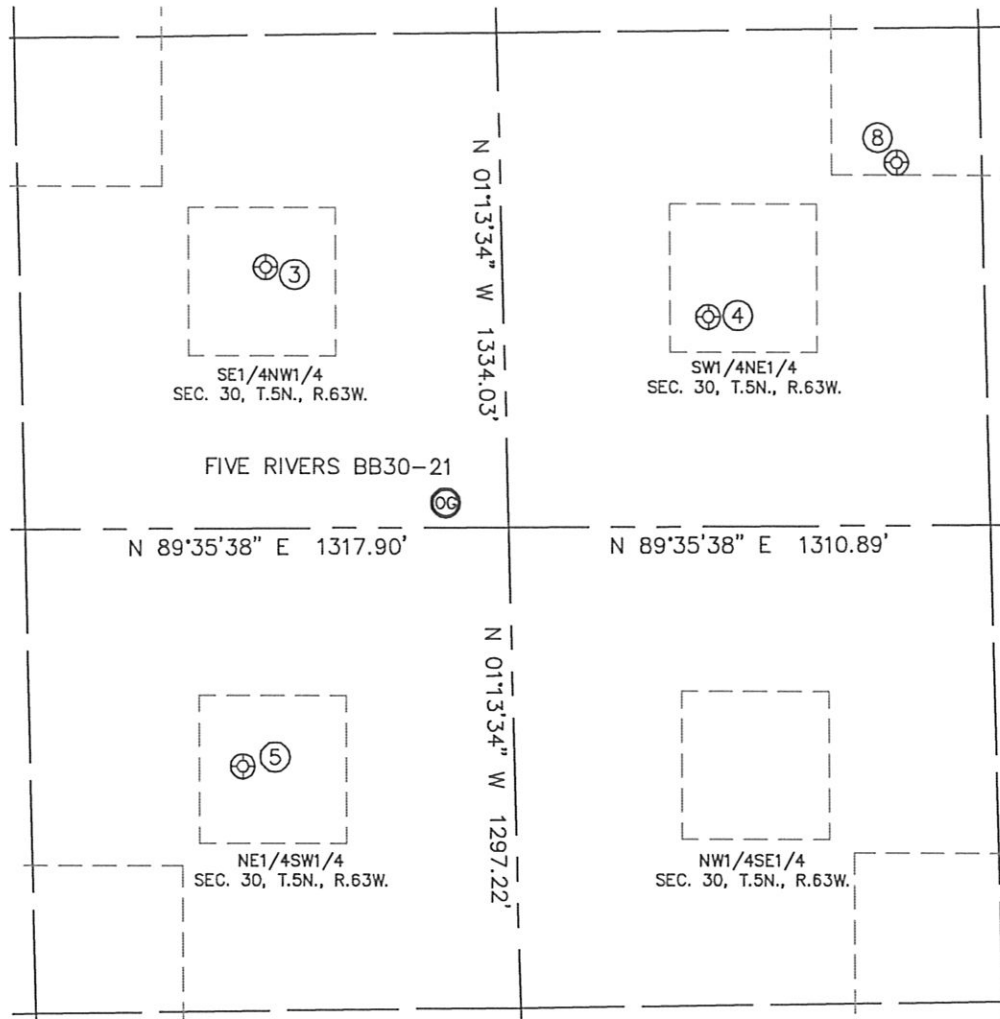
- = ALIQUOT MONUMENT AS DESCRIBED
- = CALCULATED POSITION

Brian T. Brinkman—On behalf of Lat40°, LLC
Colorado Licensed Professional
Land Surveyor No. 38175

PROJECT#: 2010006

SITE SKETCH

SECTION: 30
TOWNSHIP: 5N
RANGE: 63W



③
MONFORT BB 30-6
SE1/4NW1/4
1955' FNL
2005' FWL
LAT-40.37227°N
LONG-104.48142°W
PDOP: 1.6
ELEV: 4577

④
PETERSON 30-32
SW1/4NE1/4
2110' FNL
2065' FEL
LAT-40.37187°N
LONG-104.47710°W
PDOP: 1.2
ELEV: 4574

⑤
MONFORT BB 30-11
NE1/4SW1/4
1964' FSL
1905' FWL
LAT-40.36857°N
LONG-104.48171°W
PDOP: 2.0
ELEV: 4581

⑧
PETERSON 30-51
SW1/4NE1/4
1703' FNL
1542' FEL
LAT-40.37300°N
LONG-104.47523°W
PDOP: 1.9
ELEV: 4556

