

1625 Broadway  
Suite 2000  
Denver, CO 80202

Tel: 303.228.4000  
Fax: 303.228.4280

www.nobleenergyinc.com



August 31, 2010

Colorado Oil and Gas Conservation Commission  
The Chancery Building  
1120 Lincoln Street, Suite 801  
Denver, CO 80203

Attn: Mr. David Neslin, Director

RE: PEPPLER PC AA17-20  
Codell/Niobrara New Drill  
Township 6 North, Range 63 West, 6th P.M.  
Section 17: NE/4SW/4: 2465' FSL & 1410' FWL (Surface Location)  
Section 17: NE/4SW/4: 2465' FSL & 1410' FWL (Bottom Hole Location)  
Weld County, Colorado

Mr. Neslin:

Noble Energy, Inc. ("NEI") is planning to drill the captioned boundary well in accordance with the provisions of COGCC Rule 318A.e.

NEI's proposed wellbore spacing unit consists of the S/2NW/4, N/2SW/4 of Section 17, T6N, R63W, creating a 160-acre wellbore spacing unit. NEI is the only owner within the proposed wellbore spacing unit, therefore NEI hereby attests that no notice letters are required under COGCC Rule 318A.e.(6).

Enclosed are copies of the following documents to assist you in your review and approval of NEI's proposed APD for the captioned well:

- Plat illustrating the proposed wellbore spacing unit and number of Codell/Niobrara wells located within the existing 160-acre governmental quarter section (SW/4) to be less than eight (8) in accordance with COGCC Rule 318A.f.
- Plat illustrating proposed wellbore spacing unit on existing location plat.

Thank you for your attention to the enclosed. NEI respectfully requests that the COGCC review the enclosed information and approve the Application for Permit to Drill the captioned well.

Sincerely,

A handwritten signature in dark ink, appearing to read 'Susan Miller', written over a horizontal line.

Susan Miller  
Regulatory Analyst II  
Noble Energy Inc.

# Proposed 318Ae Spacing Unit - Noble Energy

Stell Surveying Services, LLC

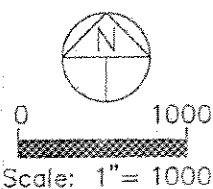
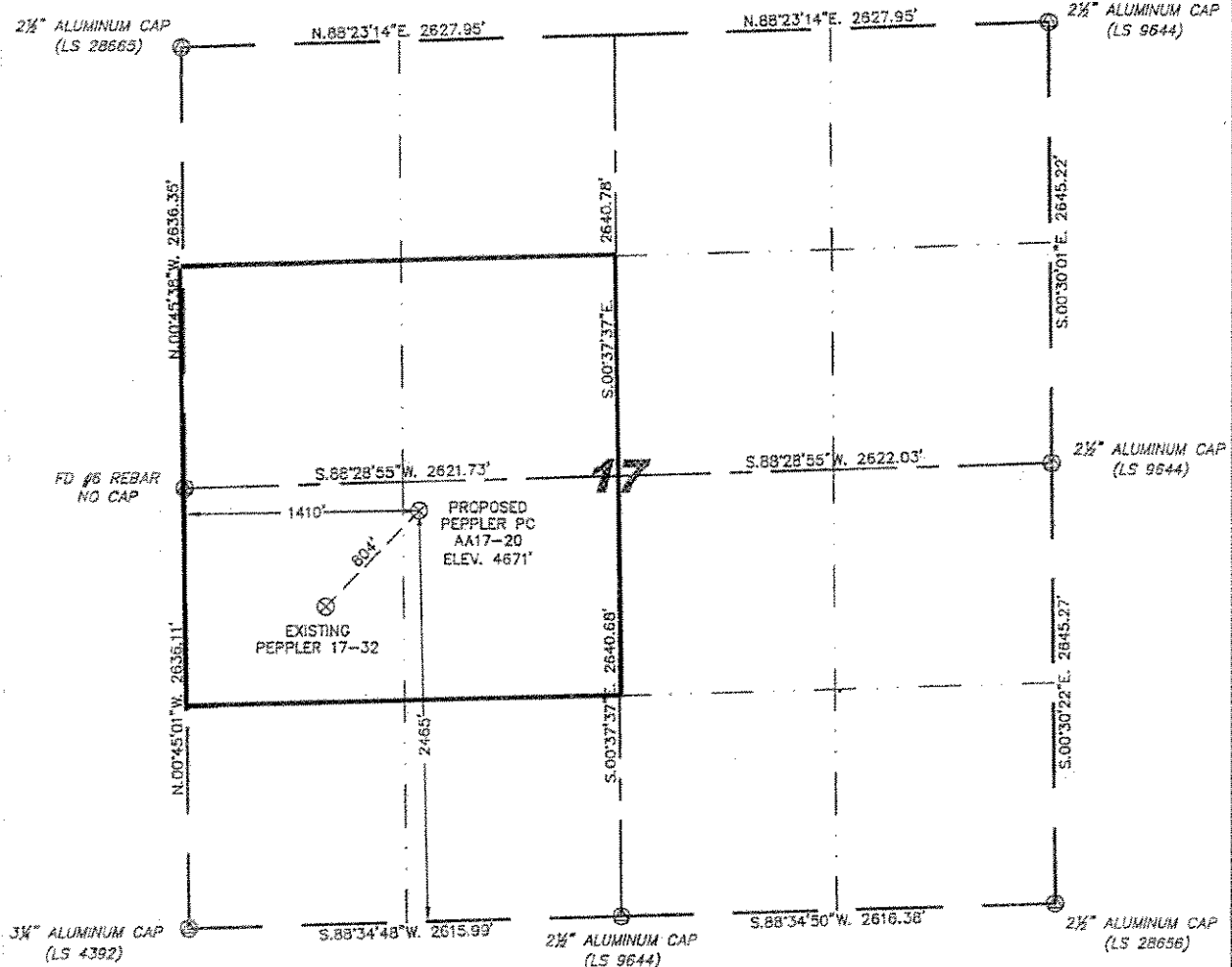
1102 West 19th Street P.O. BOX 2073

Cheyenne, Wyoming 82009

## WELL LOCATION CERTIFICATE

THIS MAP DOES NOT REPRESENT A BOUNDARY SURVEY

SECTION 17  
TOWNSHIP 6 NORTH  
RANGE 63 WEST



IN ACCORDANCE WITH A REQUEST FROM ERIK VAN DECAR - NOBLE ENERGY INC, STELL SURVEYING SERVICES, LLC HAS DETERMINED THE LOCATION OF THE PEPPLER PC AA17-20 WELL TO BE 2485' FSL, 1410' FWL, AS MEASURED AT NINETY (90) DEGREES FROM THE SECTION LINES, SECTION 17, TOWNSHIP 6 NORTH, RANGE 63 WEST, 6TH PRINCIPLE MERIDIAN, WELD COUNTY, COLORADO.

I HEREBY CERTIFY THAT THIS WELL LOCATION CERTIFICATE WAS PREPARED BY ME, OR UNDER MY DIRECT SUPERVISION, THAT THE FIELD WORK WAS COMPLETED ON 06/28/2010, FOR AND ON BEHALF OF NOBLE ENERGY INC, THAT IT IS NOT A LAND SURVEY PLAT OR AN IMPROVEMENT SURVEY PLAT, AND THAT IT IS NOT TO BE RELIED UPON FOR ESTABLISHMENT OF FENCE, BUILDING, OR OTHER FUTURE IMPROVEMENT LINES.

### NOTES:

- 1) BASIS OF BEARINGS FOR THIS MAP ARE BASED UPON GPS OBSERVATIONS MADE ON 06/11/2010 BETWEEN MONUMENTS LOCATED AT THE SOUTHEAST SECTION CORNER AND THE NORTHEAST SECTION CORNER OF SAID SECTION AND WITH ALL BEARINGS SHOWN HEREON RELATIVE THERETO.
- 2) ELEVATIONS ARE BASED UPON NGS OPUS SOLUTION NAVD 88 DATUM.
- 3) THE NEAREST EXISTING WELL IS: PEPPLER 17-32, 804' SOUTHWEST.
- 4) SEE VISIBLE IMPROVEMENTS EXHIBIT FOR ALL IMPROVEMENTS WITHIN 500'.
- 5) THE LOCATION FALLS IN IRRIGATED CROP LAND.

### LATITUDE & LONGITUDE (NAD 83 SURFACE HOLE):

LATITUDE: N 40.48607°  
LONGITUDE: W 104.46526°  
PCOP: 2.7  
QUARTER-QUARTER: NE/4SW/4  
NEAREST PROPERTY LINE: 1211' TO THE EAST

### LEGEND

- (A) FOUND SURVEY MONUMENT PER MONUMENT RECORD - EXCEPTIONS NOTED.
- (C) CALCULATED DIMENSION

David C. Holmes  
Professional Land Surveyor Registration No. 32828  
State of Colorado

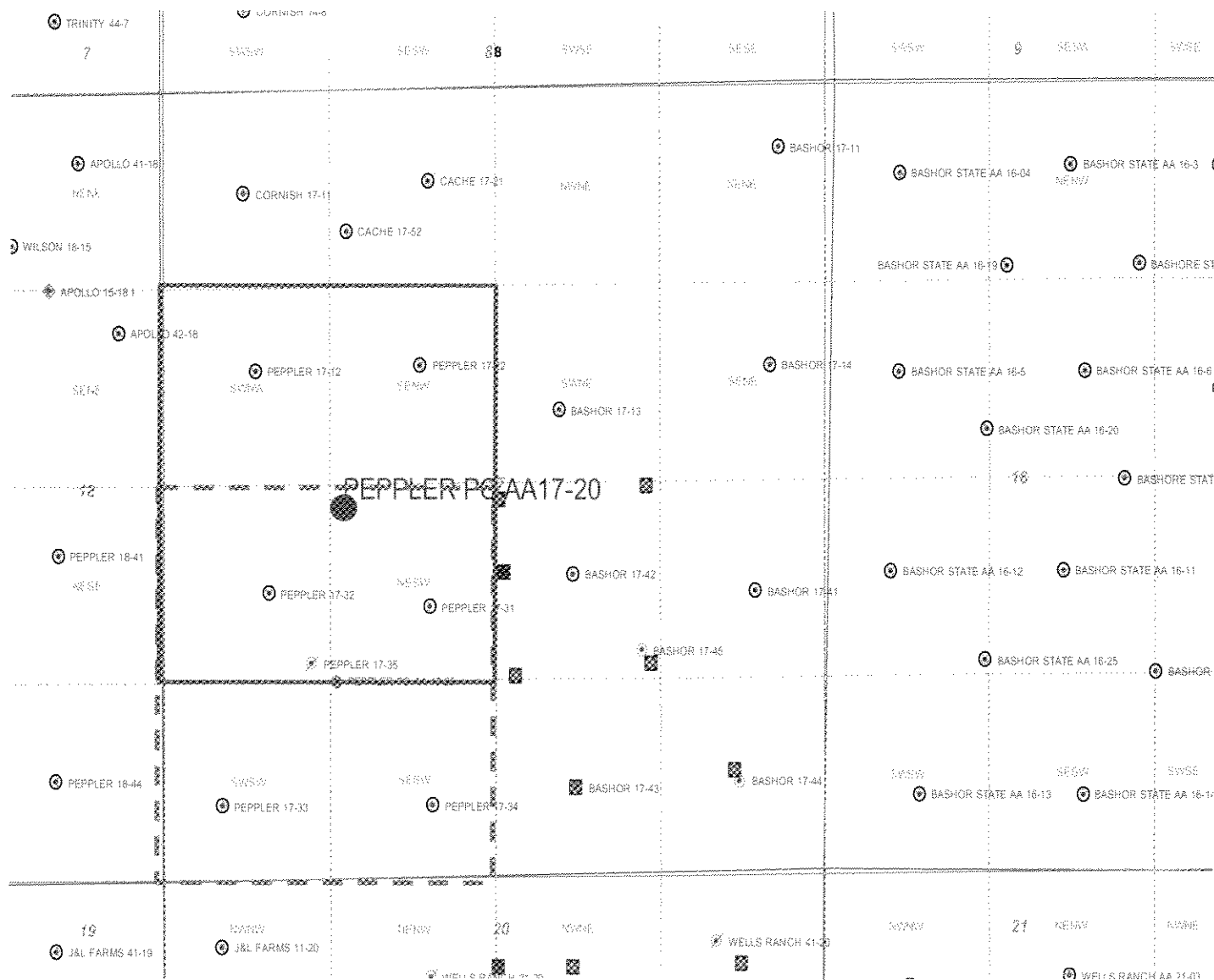
JOB #: 00686

Completed 07/08/2010

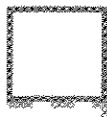


NOTICE: According to Colorado law you MUST commence any legal action based upon any defect in this W.L.C. within three years after you first discover such defect. In no event may any action based upon any defect in this W.L.C. be commenced more than ten years from this said date of the certification shown hereon.


# PEPPLER PC AA17-20 318Ae Proposed Spacing Unit – Noble Energy NESW Section 17, Township 6 North, Range 63 West



Legend



Proposed 160 acre spacing unit



Bottom Hole Location

Bottom Hole Located NESW Sec. 17, T6N, R63W

The governmental 1/4 Section has less than 8 bottom hole wells producing from the Codell, Niobrara formations.