

R
81
W

R
80
W

T6N, R80W, 6th P.M.

1939 Brass Cap
0.7' High
Lat: 40.526586
Long: 106.407128

T7N
T6N

S89°24'47"E - 2459.78' (Meas.)

S89°18'01"E - 2533.05' (Meas.)

1989 Brass Cap
0.1' High,
Steel Post
Lat: 40.526739
Long: 106.425081

2007
Alum. Cap
Lat: 40.526669
Long: 106.416236

LOT 4

LOT 3

LOT 2

LOT 1

BASIS OF BEARINGS

BASIS OF BEARINGS IS A G.P.S. OBSERVATION.

LOT 5

NOTE:
SEE ADDENDUM TO LEGAL PLAT FOR
EXISTING IMPROVEMENTS WITHIN 400' OF
THE PROPOSED WELL DISTURBANCE.

1941 Brass Cap
0.6' High
Lat: 40.518789
Long: 106.409233

1939 Brass Cap
3.0' High,
N-S Fenceline
Lat: 40.519439
Long: 106.425364

LOT 6

NOTE:
THE TOP OF PRODUCING INTERVAL FOR THIS WELL IS LOCATED IN
THE NW 1/4 NE 1/4 OF SECTION 7, T6N, R80W, 6th P.M. AT A
DISTANCE OF 867' FNL 1928' FWL. IT BEARS S20°16'26"W
1330.42' FROM THE PROPOSED WELL HEAD.

THE BOTTOM HOLE FOR THIS WELL IS LOCATED IN THE NE 1/4 SW
1/4 OF SECTION 7, T6N, R80W, 6th P.M. AT A DISTANCE OF
1873' FSL 1051' FWL. IT BEARS S19°57'07"W 3929.87' FROM THE
PROPOSED WELL HEAD.

LOT 8

1941 Brass Cap
0.7' High,
E-W Fenceline
Lat: 40.511492
Long: 106.409553

LOT 7

SURPRISE #04-06H

Elev. Ungraded Ground = 8218'

1941 Brass Cap
Buried in Ground,
Set Marked Stone.
Lat: 40.512239
Long: 106.425019

True Corner

EAST 90.00' (G.L.O.)

S81°31'45"E
1782.36' (Meas.)

1941 Brass Cap
0.5' High,
E-W Fenceline
Lat: 40.511519
Long: 106.419036

N89°46'49"W
2638.52' (Meas.)

PDOP = 3.0

NAD 83 (SURFACE LOCATION)

LATITUDE = 40°30'45.22" (40.512561)
LONGITUDE = 106°25'00.44" (106.416789)

NAD 27 (SURFACE LOCATION)

LATITUDE = 40°30'45.29" (40.512581)
LONGITUDE = 106°24'58.33" (106.416203)

STATE PLANE NAD 83

N: 1430884.307 E: 2745093.296

STATE PLANE NAD 27

N: 430882.058 E: 1745249.816

LEGEND:

└ = 90° SYMBOL

● = PROPOSED WELL HEAD.

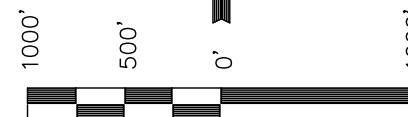
▲ = SECTION CORNERS LOCATED.

EOG RESOURCES, INC.

Well location, SURPRISE #04-06H (SURFACE
LOCATION), located as shown in the SW 1/4
SE 1/4 of Section 6, T6N, R80W, 6th P.M.,
Jackson County, Colorado.

BASIS OF ELEVATION

SPOT ELEVATION AT THE SOUTHEAST CORNER OF SECTION
29, T7N, R80W, 6th P.M., TAKEN FROM THE COALMONT
QUADRANGLE, COLORADO, JACKSON COUNTY 7.5 MINUTE
QUAD. (TOPOGRAPHIC MAP) PUBLISHED BY THE UNITED
STATES DEPARTMENT OF THE INTERIOR, GEOLOGICAL SURVEY.
SAID ELEVATION IS MARKED AS BEING 8156 FEET



SCALE

CERTIFICATE

THIS IS TO CERTIFY THAT THE ABOVE PLAT WAS PREPARED FROM
FIELD NOTES OF ACTUAL SURVEYS MADE BY ME, OBTAINED UNDER MY
SUPERVISION AND THAT THE SAME ARE TRUE AND CORRECT TO THE
BEST OF MY KNOWLEDGE AND BELIEF.

REGISTERED LAND SURVEYOR
REGISTRATION NO. 17492
STATE OF COLORADO

REV: 08-27-10 K.G.
REV: 01-04-10 K.G.
REVISED: 05-28-08
REVISED: 05-16-08

UINTAH ENGINEERING & LAND SURVEYING
85 SOUTH 200 EAST - VERNAL, UTAH 84078
(435) 789-1017

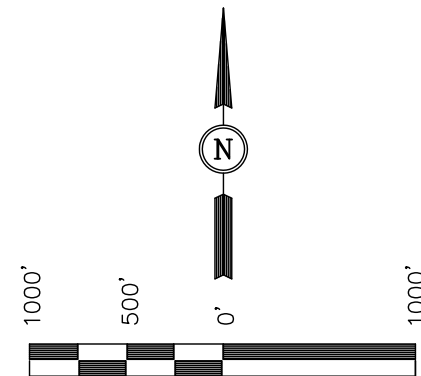
SCALE 1" = 1000'	DATE SURVEYED: 04-30-08	DATE DRAWN: 05-06-08
PARTY J.R. N.W. C.C.	REFERENCES G.L.O. PLAT	
WEATHER WARM	FILE EOG RESOURCES, INC.	

EOG RESOURCES, INC.

Well location, SURPRISE #04-06H (BOTTOM HOLE), located as shown in the NW 1/4 NE 1/4 of Section 7, T6N, R80W, 6th P.M., Jackson County, Colorado.

BASIS OF ELEVATION

SPOT ELEVATION AT THE SOUTHEAST CORNER OF SECTION 29, T7N, R80W, 6th P.M., TAKEN FROM THE COALMONT QUADRANGLE, COLORADO, JACKSON COUNTY 7.5 MINUTE QUAD. (TOPOGRAPHIC MAP) PUBLISHED BY THE UNITED STATES DEPARTMENT OF THE INTERIOR, GEOLOGICAL SURVEY. SAID ELEVATION IS MARKED AS BEING 8156 FEET



SCALE

CERTIFICATE

THIS IS TO CERTIFY THAT THE ABOVE PLAT WAS PREPARED FROM FIELD NOTES OF ACTUAL SURVEYS MADE BY ME, OBTAINED UNDER MY SUPERVISION AND THAT THE SAME ARE TRUE AND CORRECT TO THE BEST OF MY KNOWLEDGE AND BELIEF.

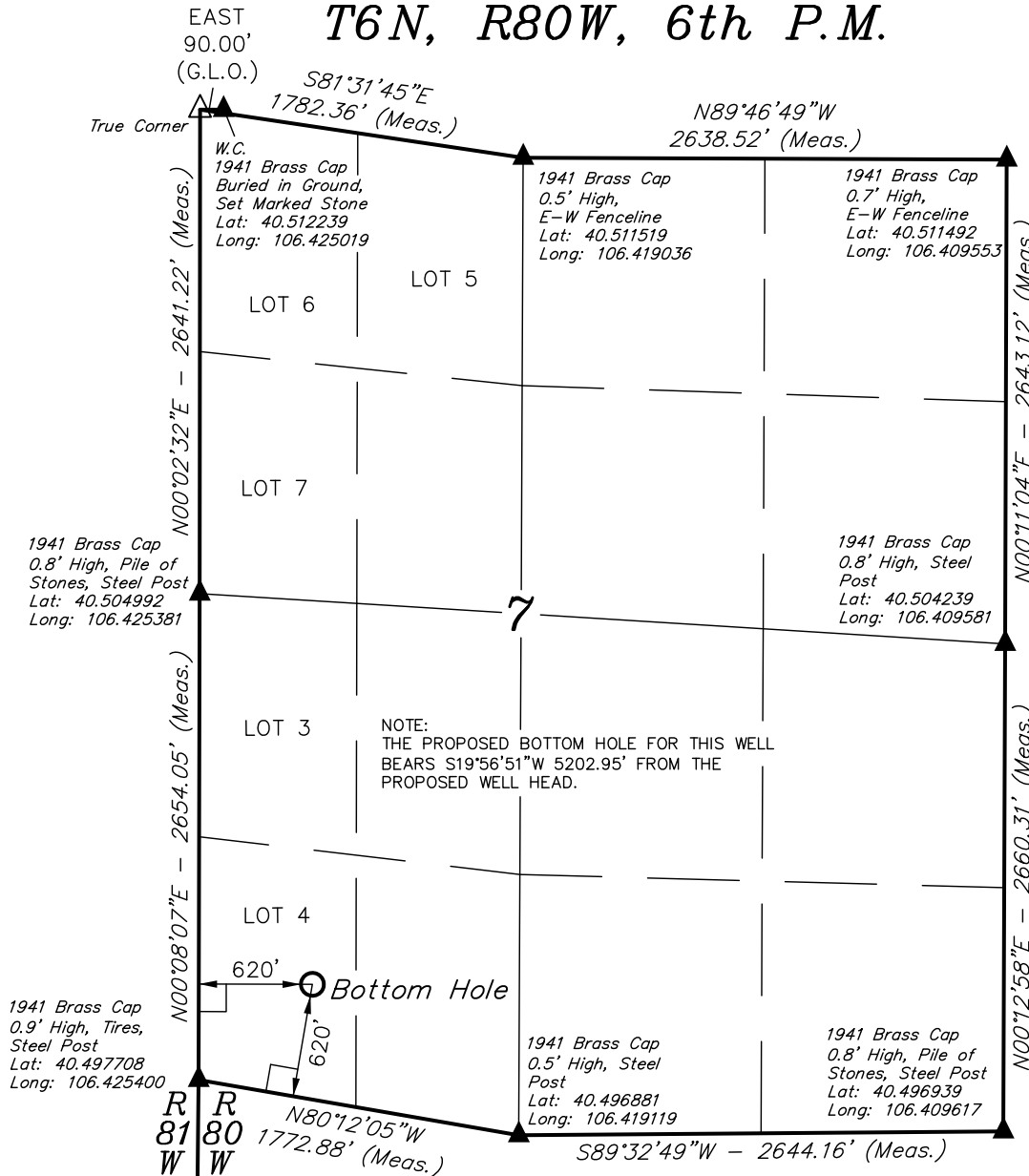
REGISTERED LAND SURVEYOR
REGISTRATION NO. 17492
STATE OF COLORADO

REV: 01-04-10 K.G.
REVISED: 05-28-08
REVISED: 05-16-08

UINTAH ENGINEERING & LAND SURVEYING
85 SOUTH 200 EAST - VERNAL, UTAH 84078
(435) 789-1017

SCALE 1" = 1000'	DATE SURVEYED: 04-30-08	DATE DRAWN: 05-06-08
PARTY J.R. N.W. C.C.	REFERENCES G.L.O. PLAT	
WEATHER WARM	FILE EOG RESOURCES, INC.	

T6N, R80W, 6th P.M.



BASIS OF BEARINGS

BASIS OF BEARINGS IS A G.P.S. OBSERVATION.

LEGEND:

- └ = 90° SYMBOL
- = PROPOSED BOTTOM HOLE
- ▲ = SECTION CORNERS LOCATED

NAD 83 (TARGET BOTTOM HOLE)	
LATITUDE = 40°29'56.91" (40.499142)	
LONGITUDE = 106°25'23.40" (106.423167)	
NAD 27 (TARGET BOTTOM HOLE)	
LATITUDE = 40°29'56.97" (40.499158)	
LONGITUDE = 106°25'21.29" (106.422581)	
STATE PLANE NAD 83	
N: 1426014.186	E: 2743269.168
STATE PLANE NAD 27	
N: 426011.895	E: 1743425.747