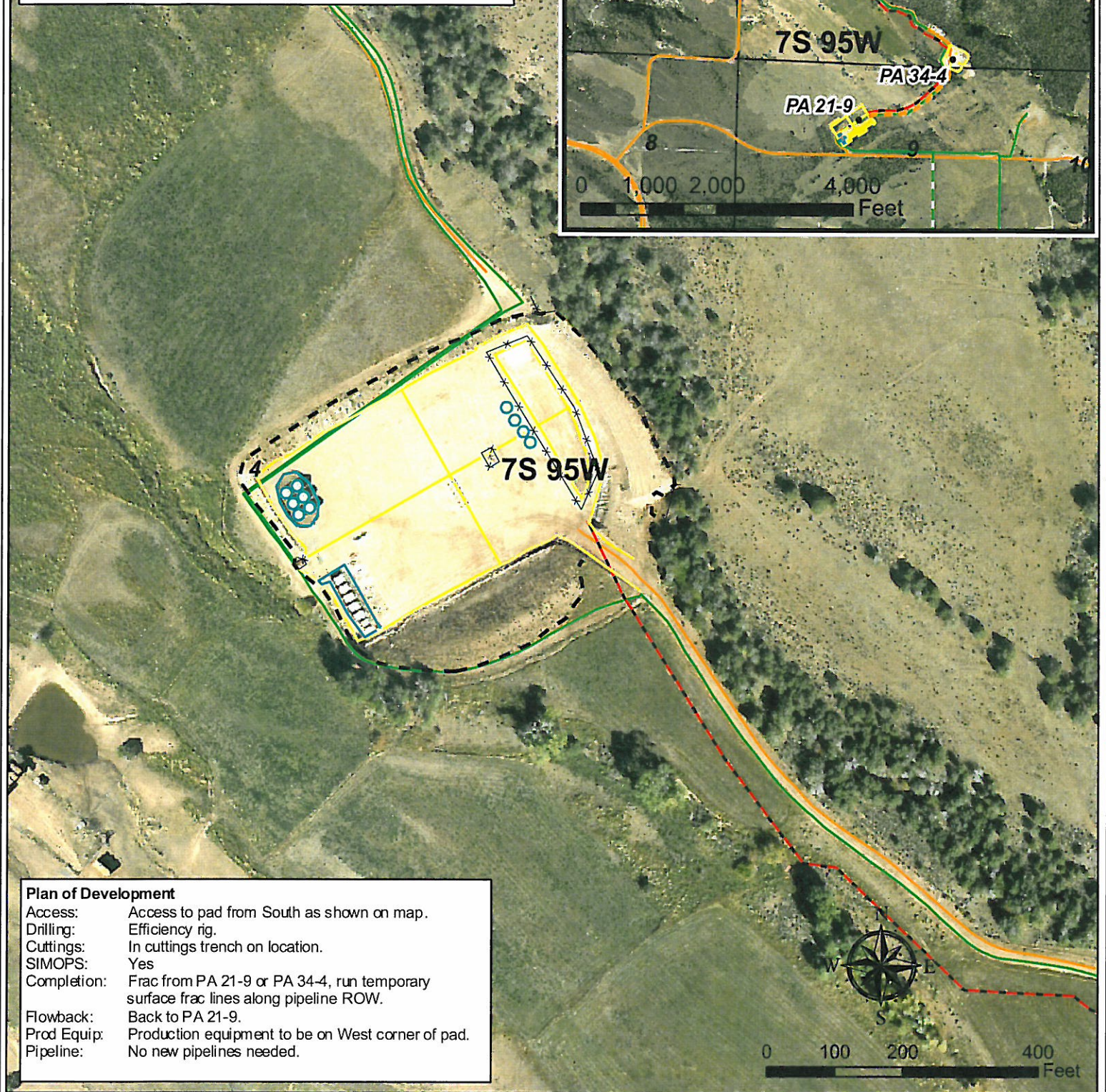
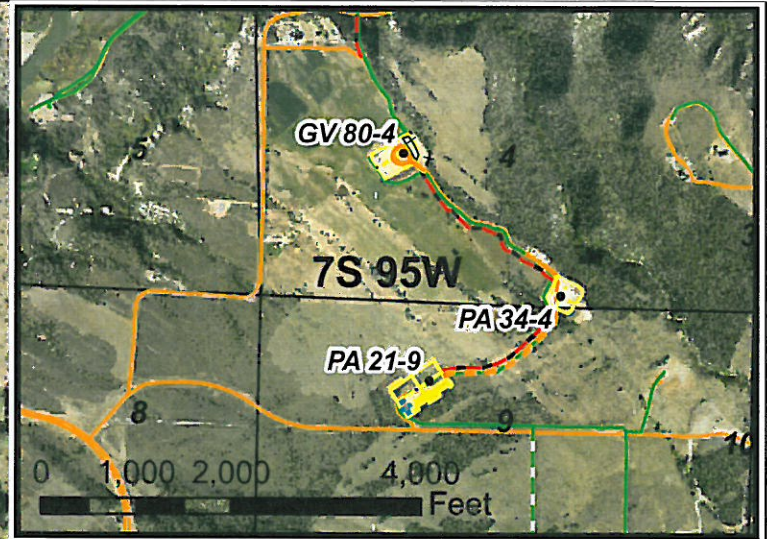


Geologist Information

General: Existing location. 6 existing wells, 17 new wells.
Ownership: Savage surface/ fee minerals.
SUA Status: In progress.
Spacing Units: 16 wells bottom-hole in Section 4 (640 Acre Unit)
7 wells bottom-hole in the S/2 of Section 5
(320 Acre Lay-down Unit)
Adjacent Owners: BMP and Knight



Plan of Development

Access: Access to pad from South as shown on map.
Drilling: Efficiency rig.
Cuttings: In cuttings trench on location.
SIMOPS: Yes
Completion: Frac from PA 21-9 or PA 34-4, run temporary surface frac lines along pipeline ROW.
Flowback: Back to PA 21-9.
Prod Equip: Production equipment to be on West corner of pad.
Pipeline: No new pipelines needed.

Legend

- Existing Production Equipment
- Proposed Frac Line
- Limit of Disturbance
- Pipeline (Valley)
- Pad or Pit
- Proposed Pipeline
- Existing Fence

Williams Production RMT

GV 80-4 Plan of Development
T7S R95W, Section 4

June 16, 2010

