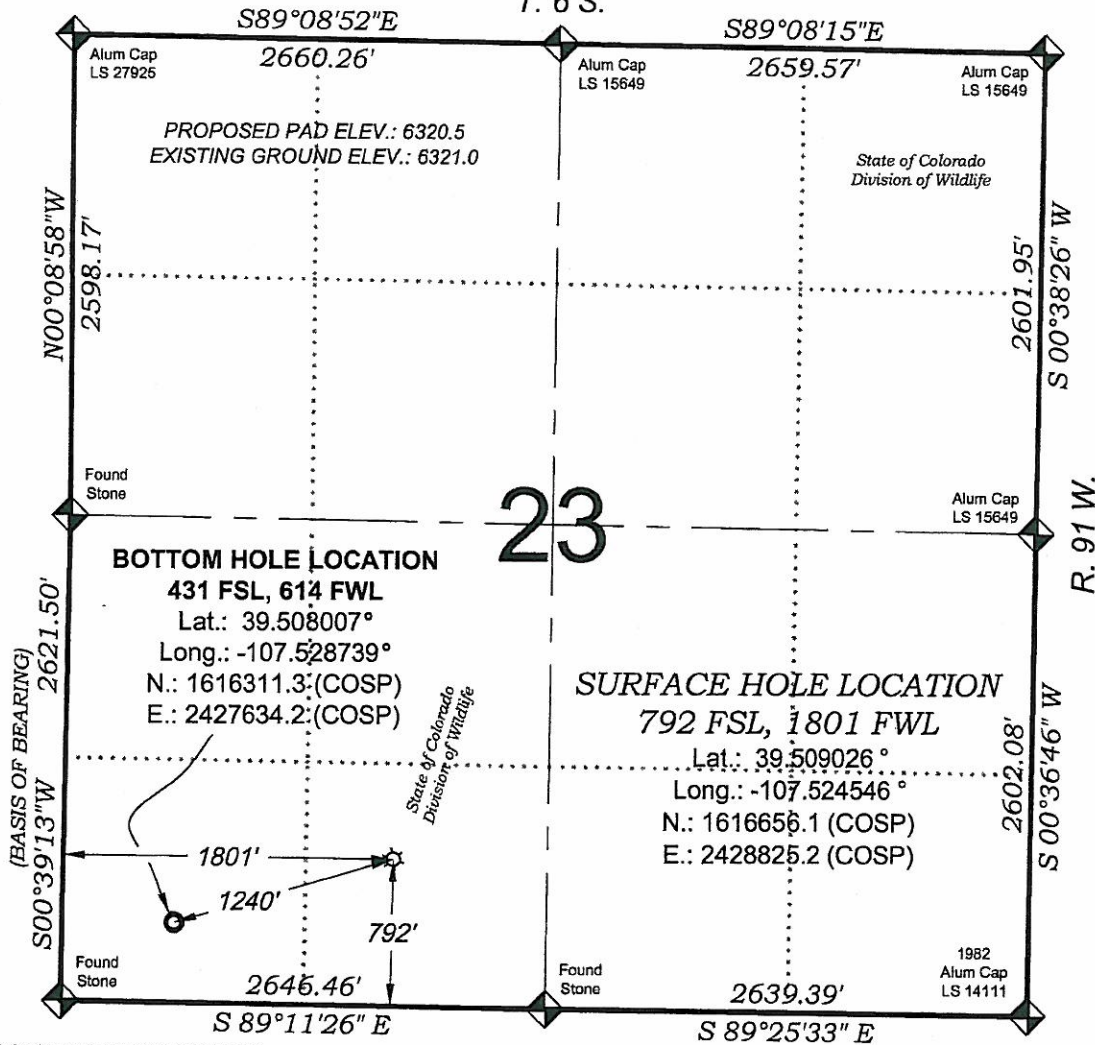


CDOW KP 414-23

T. 6 S.



SEE CONSTRUCTION LAYOUT
PLAT FOR VISIBLE IMPROVEMENTS
WITHIN 400' OF THIS LOCATION



- LEGEND -

FIELD LOCATED SECTION
MONUMENTS AS DESCRIBED

FIELD SURVEYED
WELL LOCATION

CALCULATED BOTTOM
HOLE LOCATION

CALCULATED SECTION
CORNER LOCATION

SURVEYORS STATEMENT

I, SHAWN BINION, A REGISTERED LAND SURVEYOR IN THE STATE OF COLORADO DO HEREBY CERTIFY THAT THE SURVEY SHOWN HEREON WAS PREPARED UNDER MY DIRECT SUPERVISION AND HAS BEEN STAKED ON THE GROUND AS SHOWN ON THE PLAT AND CHECKING THAT THIS MAP IS A TRUE REPRESENTATION THEREOF.

Shawn Binion
9/8/10

SHAWN BINION, COLORADO REGISTRATION NO. 38200
FOR AND ON BEHALF OF
BOOKCLIFF SURVEY SERVICES, INC.

REFERENCES

- 1) SUBDIVISION SURVEY T. 6 S., R. 91 W., 6th P.M. (GLO NOTES)
- 2) U.S.G.S. QUAD: SILT, CO

REVISED: 9/8/10

SURVEY DATE: 3/4/10
MAP DATE: 3/5/10
SCALE: 1" = 1000'
PLAT: 1 of 9
PROJECT: Williams

NOTES

- 1) ELEVATIONS BASED ON N.A.V.D. 1988 PUBLISHED COORDINATES.
- 2) LATITUDES AND LONGITUDES ARE BASE ON NAD 83, PUBLISHED COORDINATES
- 3) STATE PLANE COORDINATES ARE BASED ON COLORADO CENTRAL ZONE, U.S. SURVEY FEET.
- 4) ELEVATION MASK SET TO 15°
- 5) GPS OPERATOR J. KIRKPATRICK, OBSERVED A PDOP OF 2.28 ON POINT NO. 25058
- 6) SURFACE AND BOTTOM HOLE LOCATIONS ARE MEASURED 90° FROM SECTION LINES.

WELL LOCATION PLAT Prepared for:

Williams. Williams Production, RMT

SE1/4 SW1/4, SECTION 23
T. 6 S., R. 91 W. of the 6th. P.M.
GARFIELD COUNTY, COLORADO

BOOKCLIFF
Survey Services, Inc.