

OXY USA WTP LP

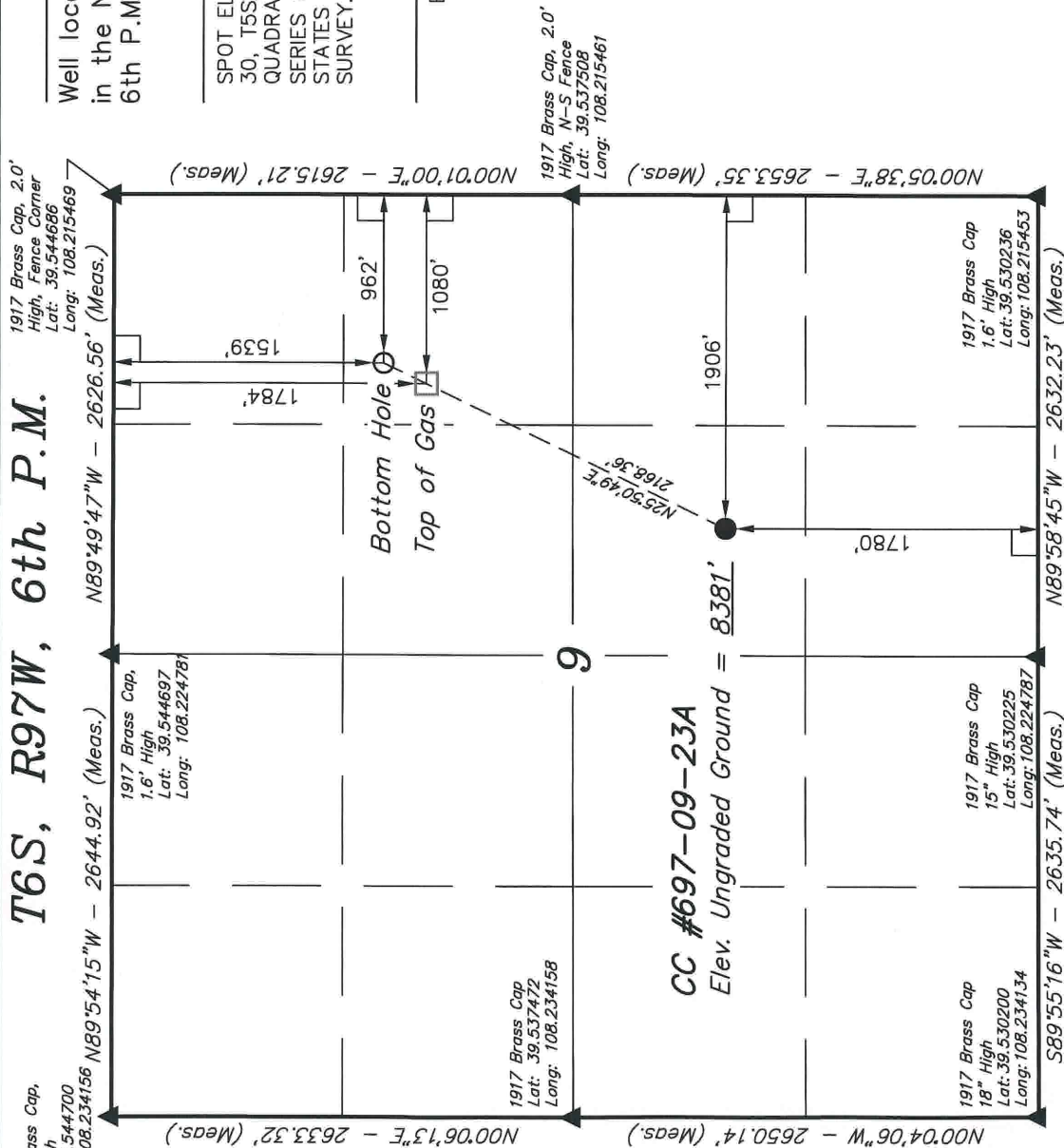
Well location, CC #697-09-23A, located as shown in the NW 1/4 SE 1/4 of Section 9, T6S, R97W, 6th P.M., Garfield County, Colorado.

BASIS OF ELEVATION

SPOT ELEVATION AT THE NORTHWEST CORNER OF SECTION 30, T5S, R95W; 6th P.M. TAKEN FROM THE FORKED GULCH QUADRANGLE, COLORADO, GARFIELD COUNTY, 7.5 MINUTE SERIES (TOPOGRAPHICAL MAP) PUBLISHED BY THE UNITED STATES DEPARTMENT OF THE INTERIOR, GEOLOGICAL SURVEY. SAID ELEVATION IS MARKED AS BEING 5966 FEET.

BASIS OF BEARINGS

BASIS OF BEARINGS IS A G.P.S. OBSERVATION.



CERTIFICATE

THIS IS TO CERTIFY THAT THE ABOVE PLAT WAS PREPARED FROM FIELD NOTES OF ACTUAL SURVEYS MADE BY ME OR UNDER MY SUPERVISION AND THAT THE SAME ARE TRUE AND CORRECT TO THE BEST OF MY KNOWLEDGE AND BELIEF.

REGISTERED LAND SURVEYOR
REGISTRATION NO. 17492
STATE OF COLORADO

<p>LEGEND:</p> <p>└ = 90° SYMBOL</p> <p>● = PROPOSED WELL HEAD.</p> <p>▲ = SECTION CORNERS LOCATED.</p>	<p>NOTE:</p> <p>SEE ADDENDUM TO LEGAL PLAT FOR EXISTING IMPROVEMENTS WITHIN 400' OF THE PROPOSED WELL DISTURBANCE.</p>		<p>PDOP = 2.0</p>		<p>UNTAH ENGINEERING & LAND SURVEYING</p> <p>85 SOUTH 200 EAST - VERNAL, UTAH 84078</p> <p>(435) 789-1017</p>	
	<p>NAD 83 (SURFACE LOCATION)</p>		<p>SCALE</p> <p>1" = 1000'</p>		<p>DATE SURVEYED:</p> <p>8-30-10</p>	
	<p>LATITUDE = 39°32'06.38" (39.535106)</p>		<p>PARTY</p> <p>B.J. C.G. K.G.</p>		<p>REFERENCES</p> <p>G.L.O. PLAT</p>	
	<p>LONGITUDE = 108°13'19.98" (108.222217)</p>		<p>WEATHER</p> <p>WARM</p>		<p>FILE</p>	
	<p>NAD 27 (SURFACE LOCATION)</p>		<p>DATE DRAWN:</p> <p>09-07-10</p>			
	<p>LATITUDE = 39°32'06.46" (39.535128)</p>					
	<p>LONGITUDE = 108°13'17.68" (108.2221578)</p>					
	<p>NAD 83 (TOP OF GAS)</p>					
	<p>LATITUDE = 39°32'23.26" (39.539794)</p>					
	<p>LONGITUDE = 108°13'09.45" (108.219292)</p>					
	<p>NAD 27 (TOP OF GAS)</p>					
	<p>LATITUDE = 39°32'23.35" (39.539819)</p>					
	<p>LONGITUDE = 108°13'07.15" (108.218653)</p>					