

OXY USA WTP LP

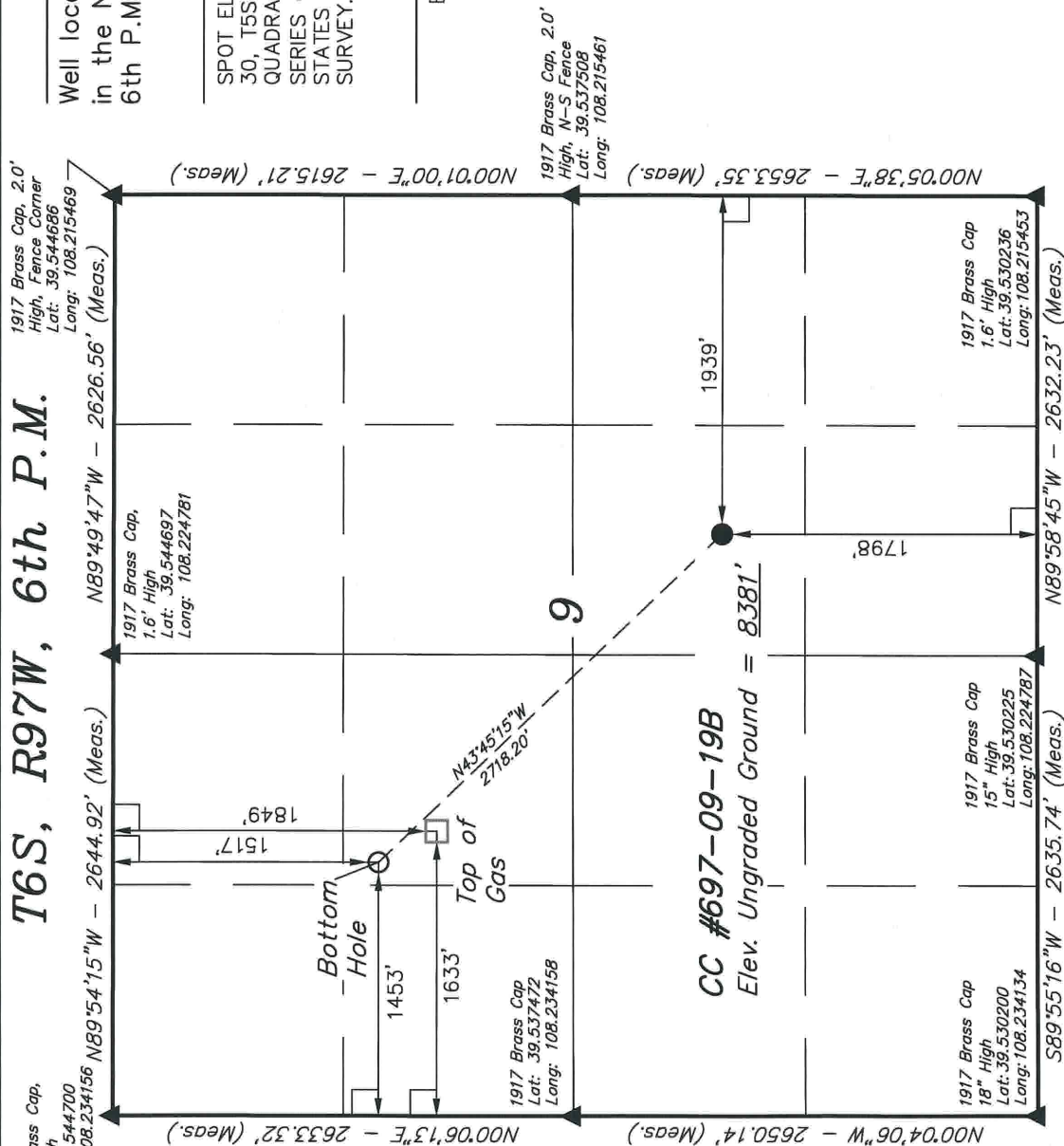
Well location, CC #697-09-19B, located as shown in the NW 1/4 SE 1/4 of Section 9, T6S, R97W, 6th P.M., Garfield County, Colorado.

BASIS OF ELEVATION

SPOT ELEVATION AT THE NORTHWEST CORNER OF SECTION 30, T5S, R95W, 6th P.M. TAKEN FROM THE FORKED GULCH QUADRANGLE, COLORADO, GARFIELD COUNTY, 7.5 MINUTE SERIES (TOPOGRAPHICAL MAP) PUBLISHED BY THE UNITED STATES DEPARTMENT OF THE INTERIOR, GEOLOGICAL SURVEY. SAID ELEVATION IS MARKED AS BEING 5966 FEET.

BASIS OF BEARINGS

BASIS OF BEARINGS IS A G.P.S. OBSERVATION.



SCALE

CERTIFICATE

THIS IS TO CERTIFY THAT THE ABOVE PLAN WAS PREPARED FROM FIELD NOTES OF ACTUAL SURVEYS MADE BY ME OR UNDER MY SUPERVISION AND THAT THE SAME ARE TRUE AND CORRECT TO THE BEST OF MY KNOWLEDGE AND BELIEF.

REGISTERED LAND SURVEYOR
REGISTRATION NO. 17492
STATE OF COLORADO

UTAH ENGINEERING & LAND SURVEYING
85 SOUTH 200 EAST - VERNAL, UTAH 84078
(435) 789-1017

SCALE	DATE SURVEYED:	DATE DRAWN:
1" = 1000'	8-30-10	09-07-10

PARTY		REFERENCES
B. J.	C. G.	K. G.
		G. L. O. PLAT

WEATHER	FILE
WARM	OXY USA WTP LP

$$\text{PDOP} = 1.8$$

NAD 83 (SURFACE LOCATION)
LATITUDE = 39°32'06.56" (39.535156)
LONGITUDE = 108°13'20.40" (108.222333)
NAD 27 (SURFACE LOCATION)

NOTE:
SEE APPENDUM TO LEGAL PLAT FOR
EXISTING IMPROVEMENTS WITHIN 400'
OF THE PROPOSED WELL DISTURBANCE.

CONDUIT	NO. OF HOLES	CONDUIT	NO. OF HOLES
NAD 83 (BOTTOM HOLE LOCATION)		NAD 83 (TOP OF GAS)	
LATITUDE = 39°32'25.93" (39.540536)		LATITUDE = 39°32'22.64" (39.539622)	
LONGITUDE = 108°13'44.42" (108.229006)		LONGITUDE = 108°13'42.13" (108.228369)	
NAD 27 (BOTTOM HOLE LOCATION)		NAD 27 (TOP OF GAS)	
LATITUDE = 39°32'26.01" (39.540558)		LATITUDE = 39°32'22.73" (39.539647)	
LONGITUDE = 108°13'42.12" (108.228367)		LONGITUDE = 108°13'39.84" (108.227733)	

LEGEND:

$\angle = 90^\circ$ SYMBOL

● = PROPOSED WELL HEAD.

▲ = SECTION CORNERS LOCATED.