



Project: GRAND VALLEY
Site: CASCADE CREEK 609-33 PAD
Well: CASCADE CREEK 697-09-40
Wellbore: CASCADE CREEK 697-09-40
Design: PLAN 2

OXY USA MID-CON

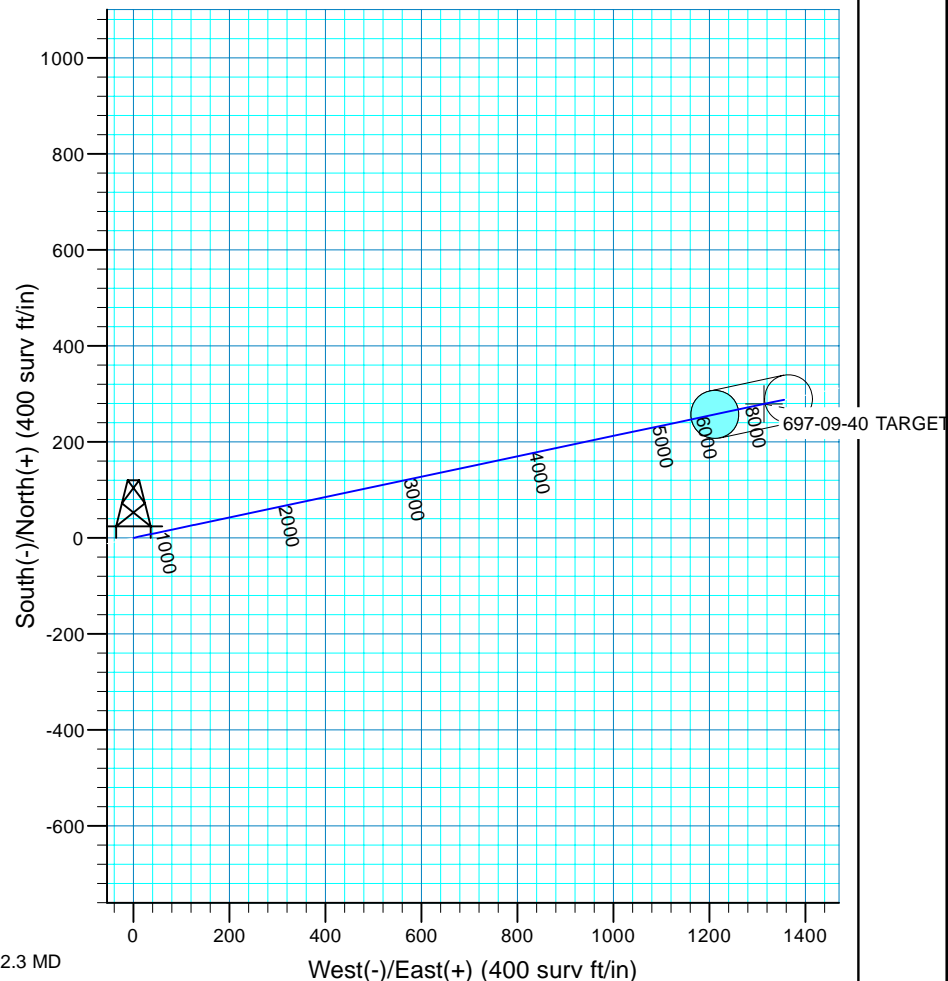
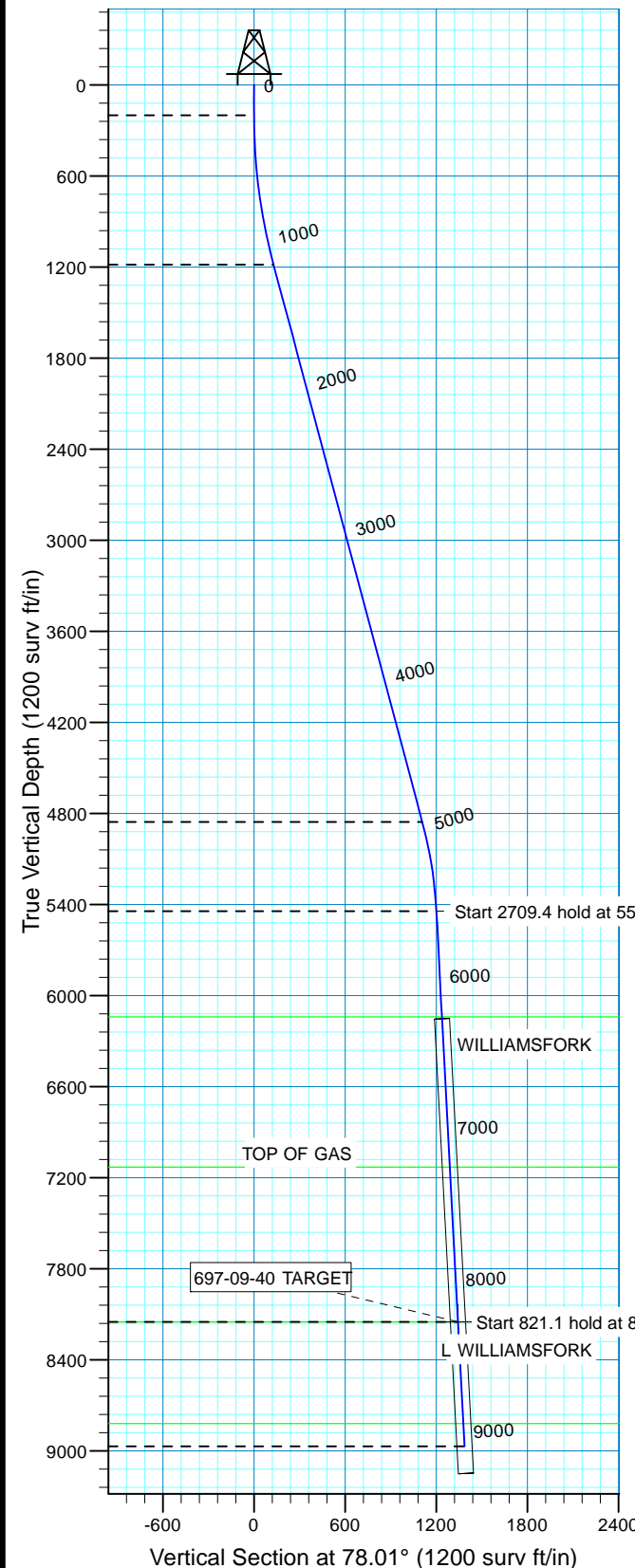


Azimuths to True North
Magnetic North: 10.53°

Magnetic Field
Strength: 52332.0snT
Dip Angle: 65.76°
Date: 9/2/2010
Model: IGRF200510

WELL DETAILS: CASCADE CREEK 697-09-40

WELL @ 8410.0surv ft (Original Well Elev) 8380.0
Northing 631265.55 Easting 1232523.88 Latitude 39° 32' 6.291 N Longitude 108° 13' 17.258 W Slot
+N/-S 0.0 +E/-W 0.0 CC#697-09-40



FORMATION TOP DETAILS		PROJECT DETAILS: GRAND VALLEY	
TVDPath	MDPath	Geodetic System: US State Plane 1927 (Exact solution)	
6140.0	6288.9	Datum: NAD 1927 (NADCON CONUS)	
7130.0	7280.3	Ellipsoid: Clarke 1866	
8150.0	8301.7	Zone: Colorado Central 502	
8820.0	8972.6	System Datum: Mean Sea Level	
		Local North: True	

SECTION DETAILS								
MD	Inc	Azi	TVD	+N/-S	+E/-W	Dleg	Vsect	Target
0.0	0.00	0.00	0.0	0.0	0.0	0.00	0.0	
200.0	0.00	0.00	200.0	0.0	0.0	0.00	0.0	
1195.6	14.93	78.01	1184.4	26.8	126.2	1.50	129.0	
4995.6	14.93	78.01	4856.0	230.2	1084.1	0.00	1108.3	
5592.3	3.00	78.01	5444.4	249.5	1174.9	2.00	1201.1	
8301.7	3.00	78.01	8150.0	279.0	1313.6	0.00	1342.9	697-09-40 TARGET
9122.8	3.00	78.01	8970.0	287.9	1355.7	0.00	1385.9	



OXY USA MID-CON

GRAND VALLEY

CASCADE CREEK 609-33 PAD

CASCADE CREEK 697-09-40 - Slot CC#697-09-40

CASCADE CREEK 697-09-40

Plan: PLAN 2

Standard Planning Report - Geographic

03 September, 2010



OXY
Planning Report - Geographic

Database:	HOPSPP	Local Co-ordinate Reference:	Well CASCADE CREEK 697-09-40 - Slot CC#697-09-40
Company:	OXY USA MID-CON	TVD Reference:	WELL @ 8410.0surv ft (Original Well Elev)
Project:	GRAND VALLEY	MD Reference:	WELL @ 8410.0surv ft (Original Well Elev)
Site:	CASCADE CREEK 609-33 PAD	North Reference:	True
Well:	CASCADE CREEK 697-09-40	Survey Calculation Method:	Minimum Curvature
Wellbore:	CASCADE CREEK 697-09-40		
Design:	PLAN 2		

Project	GRAND VALLEY, NORTH AMERICA		
Map System:	US State Plane 1927 (Exact solution)	System Datum:	Mean Sea Level
Geo Datum:	NAD 1927 (NADCON CONUS)		
Map Zone:	Colorado Central 502		

Site	CASCADE CREEK 609-33 PAD		
Site Position:		Northing:	0.00 surv ft
From:	None	Easting:	0.00 surv ft
Position Uncertainty:	0.0 surv ft	Slot Radius:	0.000 in
		Latitude:	0° 0' 0.000 N
		Longitude:	0° 0' 0.000 E
		Grid Convergence:	0.00 °

Well	CASCADE CREEK 697-09-40 - Slot CC#697-09-40		
Well Position	+N/-S	0.0 surv ft	Northing: 631,265.56 surv ft
	+E/-W	0.0 surv ft	Easting: 1,232,523.88 surv ft
Position Uncertainty	0.0 surv ft	Wellhead Elevation:	30.0 surv ft
		Latitude:	39° 32' 6.291 N
		Longitude:	108° 13' 17.258 W
		Ground Level:	8,380.0 surv ft

Wellbore	CASCADE CREEK 697-09-40				
Magnetics	Model Name	Sample Date	Declination (°)	Dip Angle (°)	Field Strength (nT)
	User Defined	9/2/2010	0.00	0.00	0

Design	PLAN 2			
Audit Notes:				
Version:	Phase:	PROTOTYPE	Tie On Depth:	0.0
Vertical Section:	Depth From (TVD) (surv ft)	+N/-S (surv ft)	+E/-W (surv ft)	Direction (°)
	0.0	0.0	0.0	78.01

Plan Sections										
Measured Depth (surv ft)	Inclination (°)	Azimuth (°)	Vertical Depth (surv ft)	+N/-S (surv ft)	+E/-W (surv ft)	Dogleg Rate (°/100ft)	Build Rate (°/100ft)	Turn Rate (°/100ft)	TFO (°)	Target
0.0	0.00	0.00	0.0	0.0	0.0	0.00	0.00	0.00	0.00	
200.0	0.00	0.00	200.0	0.0	0.0	0.00	0.00	0.00	0.00	
1,195.6	14.93	78.01	1,184.4	26.8	126.2	1.50	1.50	0.00	78.01	
4,995.6	14.93	78.01	4,856.0	230.2	1,084.1	0.00	0.00	0.00	0.00	
5,592.3	3.00	78.01	5,444.4	249.5	1,174.9	2.00	-2.00	0.00	180.00	
8,301.7	3.00	78.01	8,150.0	279.0	1,313.6	0.00	0.00	0.00	0.00	697-09-40 TARGET
9,122.8	3.00	78.01	8,970.0	287.9	1,355.7	0.00	0.00	0.00	0.00	



OXY

Planning Report - Geographic

Database:	HOPSP	Local Co-ordinate Reference:	Well CASCADE CREEK 697-09-40 - Slot CC#697-09-40
Company:	OXY USA MID-CON	TVD Reference:	WELL @ 8410.0surv ft (Original Well Elev)
Project:	GRAND VALLEY	MD Reference:	WELL @ 8410.0surv ft (Original Well Elev)
Site:	CASCADE CREEK 609-33 PAD	North Reference:	True
Well:	CASCADE CREEK 697-09-40	Survey Calculation Method:	Minimum Curvature
Wellbore:	CASCADE CREEK 697-09-40		
Design:	PLAN 2		

Planned Survey										
Measured Depth (surv ft)	Inclination (°)	Azimuth (°)	Vertical Depth (surv ft)	+N/-S (surv ft)	+E/-W (surv ft)	Map Northing (surv ft)	Map Easting (surv ft)	Latitude	Longitude	
0.0	0.00	0.00	0.0	0.0	0.0	631,265.56	1,232,523.88	39° 32' 6.291 N	108° 13' 17.258 W	
100.0	0.00	0.00	100.0	0.0	0.0	631,265.56	1,232,523.88	39° 32' 6.291 N	108° 13' 17.258 W	
200.0	0.00	0.00	200.0	0.0	0.0	631,265.56	1,232,523.88	39° 32' 6.291 N	108° 13' 17.258 W	
300.0	1.50	78.01	300.0	0.3	1.3	631,265.79	1,232,525.17	39° 32' 6.294 N	108° 13' 17.241 W	
400.0	3.00	78.01	399.9	1.1	5.1	631,266.49	1,232,529.03	39° 32' 6.302 N	108° 13' 17.192 W	
500.0	4.50	78.01	499.7	2.4	11.5	631,267.66	1,232,535.47	39° 32' 6.315 N	108° 13' 17.110 W	
600.0	6.00	78.01	599.3	4.3	20.5	631,269.29	1,232,544.47	39° 32' 6.334 N	108° 13' 16.996 W	
700.0	7.50	78.01	698.6	6.8	32.0	631,271.39	1,232,556.04	39° 32' 6.358 N	108° 13' 16.850 W	
800.0	9.00	78.01	797.5	9.8	46.0	631,273.94	1,232,570.15	39° 32' 6.387 N	108° 13' 16.670 W	
900.0	10.50	78.01	896.1	13.3	62.6	631,276.96	1,232,586.82	39° 32' 6.422 N	108° 13' 16.459 W	
1,000.0	12.00	78.01	994.2	17.3	81.6	631,280.44	1,232,606.01	39° 32' 6.462 N	108° 13' 16.215 W	
1,100.0	13.50	78.01	1,091.7	21.9	103.2	631,284.38	1,232,627.73	39° 32' 6.508 N	108° 13' 15.940 W	
1,195.6	14.93	78.01	1,184.4	26.8	126.2	631,288.57	1,232,650.83	39° 32' 6.556 N	108° 13' 15.647 W	
1,200.0	14.93	78.01	1,188.6	27.0	127.3	631,288.77	1,232,651.95	39° 32' 6.558 N	108° 13' 15.633 W	
1,300.0	14.93	78.01	1,285.2	32.4	152.5	631,293.36	1,232,677.30	39° 32' 6.611 N	108° 13' 15.311 W	
1,400.0	14.93	78.01	1,381.9	37.7	177.7	631,297.96	1,232,702.66	39° 32' 6.664 N	108° 13' 14.989 W	
1,500.0	14.93	78.01	1,478.5	43.1	202.9	631,302.56	1,232,728.02	39° 32' 6.717 N	108° 13' 14.667 W	
1,600.0	14.93	78.01	1,575.1	48.4	228.1	631,307.15	1,232,753.38	39° 32' 6.770 N	108° 13' 14.346 W	
1,700.0	14.93	78.01	1,671.7	53.8	253.4	631,311.75	1,232,778.73	39° 32' 6.823 N	108° 13' 14.024 W	
1,800.0	14.93	78.01	1,768.4	59.2	278.6	631,316.34	1,232,804.09	39° 32' 6.875 N	108° 13' 13.702 W	
1,900.0	14.93	78.01	1,865.0	64.5	303.8	631,320.94	1,232,829.45	39° 32' 6.928 N	108° 13' 13.380 W	
2,000.0	14.93	78.01	1,961.6	69.9	329.0	631,325.54	1,232,854.81	39° 32' 6.981 N	108° 13' 13.059 W	
2,100.0	14.93	78.01	2,058.2	75.2	354.2	631,330.13	1,232,880.16	39° 32' 7.034 N	108° 13' 12.737 W	
2,200.0	14.93	78.01	2,154.8	80.6	379.4	631,334.73	1,232,905.52	39° 32' 7.087 N	108° 13' 12.415 W	
2,300.0	14.93	78.01	2,251.5	85.9	404.6	631,339.32	1,232,930.88	39° 32' 7.140 N	108° 13' 12.093 W	
2,400.0	14.93	78.01	2,348.1	91.3	429.8	631,343.92	1,232,956.24	39° 32' 7.193 N	108° 13' 11.771 W	
2,500.0	14.93	78.01	2,444.7	96.6	455.0	631,348.52	1,232,981.59	39° 32' 7.246 N	108° 13' 11.450 W	
2,600.0	14.93	78.01	2,541.3	102.0	480.2	631,353.11	1,233,006.95	39° 32' 7.299 N	108° 13' 11.128 W	
2,700.0	14.93	78.01	2,638.0	107.3	505.4	631,357.71	1,233,032.31	39° 32' 7.352 N	108° 13' 10.806 W	
2,800.0	14.93	78.01	2,734.6	112.7	530.6	631,362.30	1,233,057.67	39° 32' 7.405 N	108° 13' 10.484 W	
2,900.0	14.93	78.01	2,831.2	118.0	555.9	631,366.90	1,233,083.02	39° 32' 7.457 N	108° 13' 10.163 W	
3,000.0	14.93	78.01	2,927.8	123.4	581.1	631,371.49	1,233,108.38	39° 32' 7.510 N	108° 13' 9.841 W	
3,100.0	14.93	78.01	3,024.4	128.7	606.3	631,376.09	1,233,133.74	39° 32' 7.563 N	108° 13' 9.519 W	
3,200.0	14.93	78.01	3,121.1	134.1	631.5	631,380.69	1,233,159.10	39° 32' 7.616 N	108° 13' 9.197 W	
3,300.0	14.93	78.01	3,217.7	139.5	656.7	631,385.28	1,233,184.45	39° 32' 7.669 N	108° 13' 8.876 W	
3,400.0	14.93	78.01	3,314.3	144.8	681.9	631,389.88	1,233,209.81	39° 32' 7.722 N	108° 13' 8.554 W	
3,500.0	14.93	78.01	3,410.9	150.2	707.1	631,394.47	1,233,235.17	39° 32' 7.775 N	108° 13' 8.232 W	
3,600.0	14.93	78.01	3,507.6	155.5	732.3	631,399.07	1,233,260.53	39° 32' 7.828 N	108° 13' 7.910 W	
3,700.0	14.93	78.01	3,604.2	160.9	757.5	631,403.67	1,233,285.88	39° 32' 7.881 N	108° 13' 7.589 W	
3,800.0	14.93	78.01	3,700.8	166.2	782.7	631,408.26	1,233,311.24	39° 32' 7.934 N	108° 13' 7.267 W	
3,900.0	14.93	78.01	3,797.4	171.6	807.9	631,412.86	1,233,336.60	39° 32' 7.987 N	108° 13' 6.945 W	
4,000.0	14.93	78.01	3,894.0	176.9	833.1	631,417.45	1,233,361.96	39° 32' 8.039 N	108° 13' 6.623 W	
4,100.0	14.93	78.01	3,990.7	182.3	858.4	631,422.05	1,233,387.31	39° 32' 8.092 N	108° 13' 6.302 W	
4,200.0	14.93	78.01	4,087.3	187.6	883.6	631,426.65	1,233,412.67	39° 32' 8.145 N	108° 13' 5.980 W	
4,300.0	14.93	78.01	4,183.9	193.0	908.8	631,431.24	1,233,438.03	39° 32' 8.198 N	108° 13' 5.658 W	
4,400.0	14.93	78.01	4,280.5	198.3	934.0	631,435.84	1,233,463.39	39° 32' 8.251 N	108° 13' 5.336 W	
4,500.0	14.93	78.01	4,377.2	203.7	959.2	631,440.43	1,233,488.74	39° 32' 8.304 N	108° 13' 5.015 W	
4,600.0	14.93	78.01	4,473.8	209.0	984.4	631,445.03	1,233,514.10	39° 32' 8.357 N	108° 13' 4.693 W	
4,700.0	14.93	78.01	4,570.4	214.4	1,009.6	631,449.62	1,233,539.46	39° 32' 8.410 N	108° 13' 4.371 W	
4,800.0	14.93	78.01	4,667.0	219.8	1,034.8	631,454.22	1,233,564.82	39° 32' 8.463 N	108° 13' 4.049 W	
4,900.0	14.93	78.01	4,763.6	225.1	1,060.0	631,458.82	1,233,590.17	39° 32' 8.516 N	108° 13' 3.728 W	
4,995.6	14.93	78.01	4,856.0	230.2	1,084.1	631,463.21	1,233,614.42	39° 32' 8.566 N	108° 13' 3.420 W	
5,000.0	14.85	78.01	4,860.3	230.5	1,085.2	631,463.41	1,233,615.53	39° 32' 8.568 N	108° 13' 3.406 W	
5,100.0	12.85	78.01	4,957.4	235.4	1,108.6	631,467.68	1,233,639.07	39° 32' 8.618 N	108° 13' 3.107 W	



OXY

Planning Report - Geographic

Database:	HOPSPP	Local Co-ordinate Reference:	Well CASCADE CREEK 697-09-40 - Slot CC#697-09-40
Company:	OXY USA MID-CON	TVD Reference:	WELL @ 8410.0surv ft (Original Well Elev)
Project:	GRAND VALLEY	MD Reference:	WELL @ 8410.0surv ft (Original Well Elev)
Site:	CASCADE CREEK 609-33 PAD	North Reference:	True
Well:	CASCADE CREEK 697-09-40	Survey Calculation Method:	Minimum Curvature
Wellbore:	CASCADE CREEK 697-09-40		
Design:	PLAN 2		

Planned Survey										
Measured Depth (surv ft)	Inclination (°)	Azimuth (°)	Vertical Depth (surv ft)	+N/-S (surv ft)	+E/-W (surv ft)	Map Northing (surv ft)	Map Easting (surv ft)	Latitude	Longitude	
5,200.0	10.85	78.01	5,055.2	239.7	1,128.7	631,471.34	1,233,659.27	39° 32' 8.660 N	108° 13' 2.851 W	
5,300.0	8.85	78.01	5,153.7	243.2	1,145.4	631,474.39	1,233,676.10	39° 32' 8.695 N	108° 13' 2.637 W	
5,400.0	6.85	78.01	5,252.8	246.1	1,158.8	631,476.82	1,233,689.53	39° 32' 8.723 N	108° 13' 2.467 W	
5,500.0	4.85	78.01	5,352.3	248.2	1,168.8	631,478.64	1,233,699.55	39° 32' 8.744 N	108° 13' 2.340 W	
5,592.3	3.00	78.01	5,444.4	249.5	1,174.9	631,479.77	1,233,705.76	39° 32' 8.757 N	108° 13' 2.261 W	
5,600.0	3.00	78.01	5,452.0	249.6	1,175.3	631,479.84	1,233,706.16	39° 32' 8.757 N	108° 13' 2.256 W	
5,700.0	3.00	78.01	5,551.9	250.7	1,180.4	631,480.77	1,233,711.31	39° 32' 8.768 N	108° 13' 2.191 W	
5,800.0	3.00	78.01	5,651.8	251.8	1,185.6	631,481.70	1,233,716.46	39° 32' 8.779 N	108° 13' 2.125 W	
5,900.0	3.00	78.01	5,751.6	252.9	1,190.7	631,482.64	1,233,721.61	39° 32' 8.790 N	108° 13' 2.060 W	
6,000.0	3.00	78.01	5,851.5	253.9	1,195.8	631,483.57	1,233,726.76	39° 32' 8.800 N	108° 13' 1.994 W	
6,100.0	3.00	78.01	5,951.4	255.0	1,200.9	631,484.50	1,233,731.91	39° 32' 8.811 N	108° 13' 1.929 W	
6,200.0	3.00	78.01	6,051.2	256.1	1,206.0	631,485.44	1,233,737.06	39° 32' 8.822 N	108° 13' 1.864 W	
6,288.9	3.00	78.01	6,140.0	257.1	1,210.6	631,486.27	1,233,741.64	39° 32' 8.831 N	108° 13' 1.806 W	
WILLIAMSFORK										
6,300.0	3.00	78.01	6,151.1	257.2	1,211.2	631,486.37	1,233,742.21	39° 32' 8.833 N	108° 13' 1.798 W	
6,400.0	3.00	78.01	6,250.9	258.3	1,216.3	631,487.31	1,233,747.36	39° 32' 8.843 N	108° 13' 1.733 W	
6,500.0	3.00	78.01	6,350.8	259.4	1,221.4	631,488.24	1,233,752.51	39° 32' 8.854 N	108° 13' 1.668 W	
6,600.0	3.00	78.01	6,450.7	260.5	1,226.5	631,489.17	1,233,757.66	39° 32' 8.865 N	108° 13' 1.602 W	
6,700.0	3.00	78.01	6,550.5	261.6	1,231.6	631,490.11	1,233,762.81	39° 32' 8.876 N	108° 13' 1.537 W	
6,800.0	3.00	78.01	6,650.4	262.6	1,236.8	631,491.04	1,233,767.96	39° 32' 8.886 N	108° 13' 1.472 W	
6,900.0	3.00	78.01	6,750.3	263.7	1,241.9	631,491.97	1,233,773.11	39° 32' 8.897 N	108° 13' 1.406 W	
7,000.0	3.00	78.01	6,850.1	264.8	1,247.0	631,492.91	1,233,778.26	39° 32' 8.908 N	108° 13' 1.341 W	
7,100.0	3.00	78.01	6,950.0	265.9	1,252.1	631,493.84	1,233,783.41	39° 32' 8.919 N	108° 13' 1.276 W	
7,200.0	3.00	78.01	7,049.9	267.0	1,257.2	631,494.77	1,233,788.56	39° 32' 8.929 N	108° 13' 1.210 W	
7,280.3	3.00	78.01	7,130.0	267.9	1,261.3	631,495.52	1,233,792.69	39° 32' 8.938 N	108° 13' 1.158 W	
TOP OF GAS										
7,300.0	3.00	78.01	7,149.7	268.1	1,262.4	631,495.71	1,233,793.71	39° 32' 8.940 N	108° 13' 1.145 W	
7,400.0	3.00	78.01	7,249.6	269.2	1,267.5	631,496.64	1,233,798.85	39° 32' 8.951 N	108° 13' 1.080 W	
7,500.0	3.00	78.01	7,349.4	270.3	1,272.6	631,497.57	1,233,804.00	39° 32' 8.962 N	108° 13' 1.014 W	
7,600.0	3.00	78.01	7,449.3	271.3	1,277.7	631,498.51	1,233,809.15	39° 32' 8.972 N	108° 13' 0.949 W	
7,700.0	3.00	78.01	7,549.2	272.4	1,282.8	631,499.44	1,233,814.30	39° 32' 8.983 N	108° 13' 0.884 W	
7,800.0	3.00	78.01	7,649.0	273.5	1,288.0	631,500.37	1,233,819.45	39° 32' 8.994 N	108° 13' 0.818 W	
7,900.0	3.00	78.01	7,748.9	274.6	1,293.1	631,501.31	1,233,824.60	39° 32' 9.005 N	108° 13' 0.753 W	
8,000.0	3.00	78.01	7,848.8	275.7	1,298.2	631,502.24	1,233,829.75	39° 32' 9.015 N	108° 13' 0.688 W	
8,100.0	3.00	78.01	7,948.6	276.8	1,303.3	631,503.17	1,233,834.90	39° 32' 9.026 N	108° 13' 0.622 W	
8,200.0	3.00	78.01	8,048.5	277.9	1,308.4	631,504.11	1,233,840.05	39° 32' 9.037 N	108° 13' 0.557 W	
8,301.7	3.00	78.01	8,150.0	279.0	1,313.6	631,505.05	1,233,845.29	39° 32' 9.048 N	108° 13' 0.490 W	
L WILLIAMSFORK										
8,400.0	3.00	78.01	8,248.2	280.0	1,318.7	631,505.97	1,233,850.35	39° 32' 9.058 N	108° 13' 0.426 W	
8,500.0	3.00	78.01	8,348.1	281.1	1,323.8	631,506.91	1,233,855.50	39° 32' 9.069 N	108° 13' 0.361 W	
8,600.0	3.00	78.01	8,447.9	282.2	1,328.9	631,507.84	1,233,860.65	39° 32' 9.080 N	108° 13' 0.296 W	
8,700.0	3.00	78.01	8,547.8	283.3	1,334.0	631,508.77	1,233,865.80	39° 32' 9.091 N	108° 13' 0.230 W	
8,800.0	3.00	78.01	8,647.7	284.4	1,339.2	631,509.71	1,233,870.95	39° 32' 9.101 N	108° 13' 0.165 W	
8,900.0	3.00	78.01	8,747.5	285.5	1,344.3	631,510.64	1,233,876.10	39° 32' 9.112 N	108° 13' 0.100 W	
8,972.6	3.00	78.01	8,820.0	286.3	1,348.0	631,511.32	1,233,879.84	39° 32' 9.120 N	108° 13' 0.052 W	
ROLLINS										
9,000.0	3.00	78.01	8,847.4	286.6	1,349.4	631,511.57	1,233,881.25	39° 32' 9.123 N	108° 13' 0.034 W	
9,100.0	3.00	78.01	8,947.2	287.6	1,354.5	631,512.51	1,233,886.40	39° 32' 9.133 N	108° 12' 59.969 W	
9,122.8	3.00	78.01	8,970.0	287.9	1,355.7	631,512.72	1,233,887.57	39° 32' 9.136 N	108° 12' 59.954 W	



OXY
Planning Report - Geographic

Database:	HOPSP	Local Co-ordinate Reference:	Well CASCADE CREEK 697-09-40 - Slot CC#697-09-40
Company:	OXY USA MID-CON	TVD Reference:	WELL @ 8410.0surv ft (Original Well Elev)
Project:	GRAND VALLEY	MD Reference:	WELL @ 8410.0surv ft (Original Well Elev)
Site:	CASCADE CREEK 609-33 PAD	North Reference:	True
Well:	CASCADE CREEK 697-09-40	Survey Calculation Method:	Minimum Curvature
Wellbore:	CASCADE CREEK 697-09-40		
Design:	PLAN 2		

Design Targets									
Target Name									
- hit/miss target	Dip Angle	Dip Dir.	TVD	+N/-S	+E/-W	Northing	Easting	Latitude	Longitude
- Shape	(°)	(°)	(surv ft)	(surv ft)	(surv ft)	(surv ft)	(surv ft)		
697-09-40 TARGET	357.00	78.01	8,150.0	279.0	1,313.6	631,505.05	1,233,845.29	39° 32' 9.048 N	108° 13' 0.490 W
- plan hits target center									
- Circle (radius 50.0)									

Formations						
Measured Depth	Vertical Depth					
(surv ft)	(surv ft)	Name	Lithology	Dip	Dip Direction	
				(°)	(°)	
6,288.9	6,140.0	WILLIAMSFORK		0.00		
7,280.3	7,130.0	TOP OF GAS		0.00		
8,301.7	8,150.0	L WILLIAMSFORK		0.00		
8,972.6	8,820.0	ROLLINS		0.00		