

# T6S, R97W, 6th P.M.

## OXY USA WTP LP

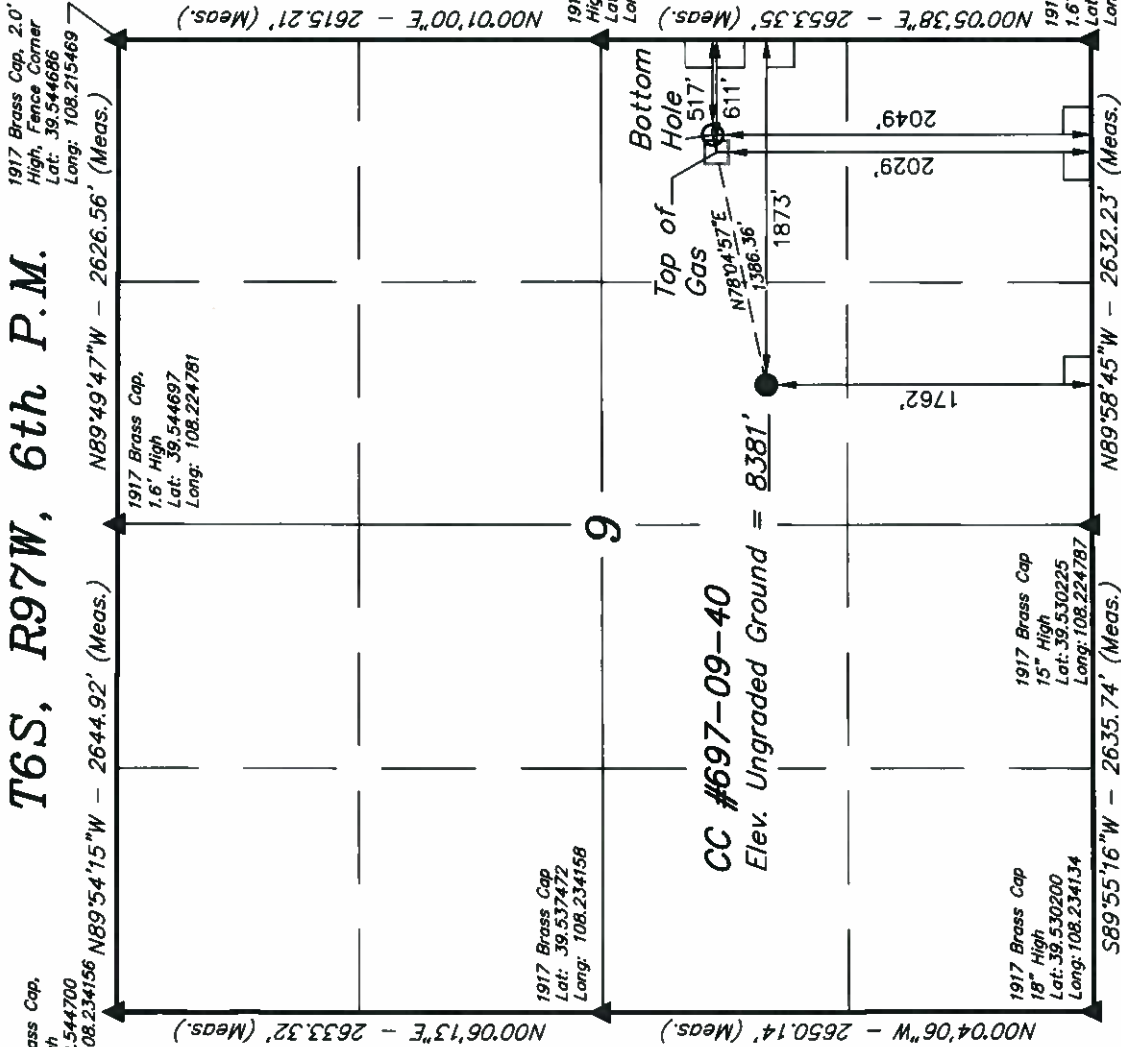
Well location, CC #697-09-40, located as shown in the NW 1/4 SE 1/4 of Section 9, T6S, R97W, 6th P.M., Garfield County, Colorado.

### BASIS OF ELEVATION

SPOT ELEVATION AT THE NORTHWEST CORNER OF SECTION 30, T5S, R95W, 6th P.M. TAKEN FROM THE FORKED GULCH QUADRANGLE, COLORADO, GARFIELD COUNTY, 7.5 MINUTE SERIES (TOPOGRAPHICAL MAP) PUBLISHED BY THE UNITED STATES DEPARTMENT OF THE INTERIOR, GEOLOGICAL SURVEY. SAID ELEVATION IS MARKED AS BEING 5966 FEET.

### BASIS OF BEARINGS

BASIS OF BEARINGS IS A G.P.S. OBSERVATION.



### CERTIFICATE

THIS IS TO CERTIFY THAT THE ABOVE PLAT WAS PREPARED FROM FIELD NOTES OF ACTUAL SURVEYS MADE BY ME OR UNDER MY SUPERVISION AND THAT THE SAME ARE TRUE AND CORRECT TO THE BEST OF MY KNOWLEDGE AND BELIEF.

REGISTERED LAND SURVEYOR  
REGISTRATION NO. 175492  
STATE OF COLORADO

Revised: 09-07-10

### UTAH ENGINEERING & LAND SURVEYING

85 SOUTH 200 EAST - VERNAL, UTAH 84078

(435) 789-1017

SCALE 1" = 1000'	DATE SURVEYED: 09-23-08	DATE DRAWN: 11-03-08
PARTY B.J. C.G. K.G.	REFERENCES G.L.O. PLAT	
WEATHER WARM	FILE	

PDOP = 2.0	
NAD 83 (SURFACE LOCATION)	
LATITUDE = 39°32'06.21" (39.535058)	
LONGITUDE = 108°13'19.56" (108.222100)	
NAD 27 (SURFACE LOCATION)	
LATITUDE = 39°32'06.29" (39.535081)	
LONGITUDE = 108°13'17.26" (108.221461)	
NAD 83 (TOP OF GAS)	
LATITUDE = 39°32'08.86" (39.535794)	
LONGITUDE = 108°13'03.46" (108.217628)	
NAD 27 (TOP OF GAS)	
LATITUDE = 39°32'08.94" (39.535817)	
LONGITUDE = 108°13'01.16" (108.216889)	

NOTE:  
SEE ADDENDUM TO LEGAL PLAT FOR  
EXISTING IMPROVEMENTS WITHIN 400'  
OF THE PROPOSED WELL DISTURBANCE.

### LEGEND:

└ = 90° SYMBOL

● = PROPOSED WELL HEAD.

▲ = SECTION CORNERS LOCATED.