

T6S, R97W, 6th P.M.

OXY USA WTP LP

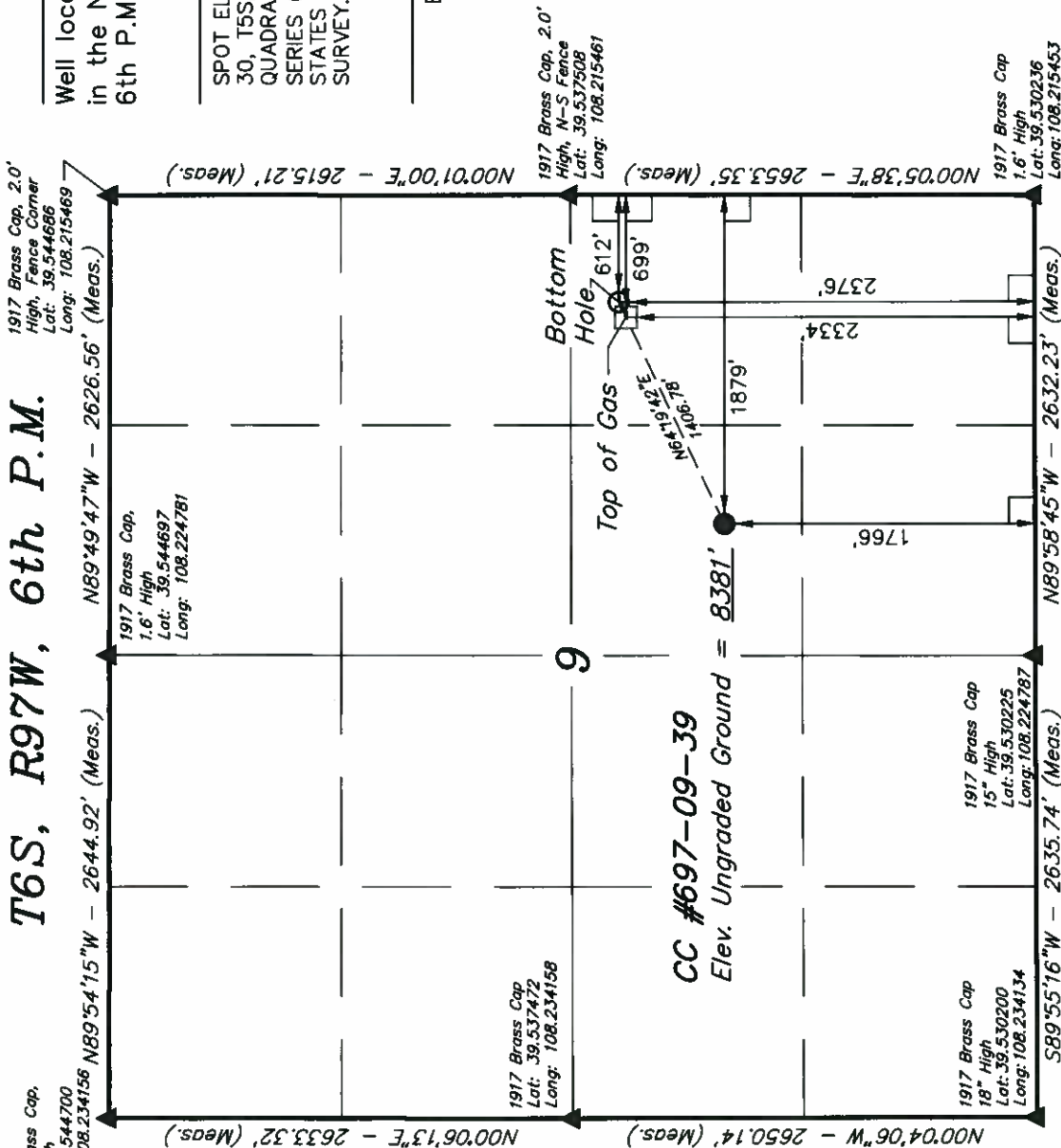
Well location, CC #697-09-39, located as shown in the NW 1/4 SE 1/4 of Section 9, T6S, R97W, 6th P.M., Garfield County, Colorado.

BASIS OF ELEVATION

SPOT ELEVATION AT THE NORTHWEST CORNER OF SECTION 30, T5S, R95W, 6th P.M. TAKEN FROM THE FORKED GULCH QUADRANGLE, COLORADO, GARFIELD COUNTY, 7.5 MINUTE SERIES (TOPOGRAPHICAL MAP) PUBLISHED BY THE UNITED STATES DEPARTMENT OF THE INTERIOR, GEOLOGICAL SURVEY. SAID ELEVATION IS MARKED AS BEING 5966 FEET.

BASIS OF BEARINGS

BASIS OF BEARINGS IS A G.P.S. OBSERVATION.



CERTIFICATE

THIS IS TO CERTIFY THAT THE ABOVE PLAT WAS PREPARED FROM FIELD NOTES OF ACTUAL SURVEYS MADE BY ME OR UNDER MY SUPERVISION AND THAT THE SAME ARE TRUE AND CORRECT TO THE BEST OF MY KNOWLEDGE AND BELIEF.

REGISTERED LAND SURVEYOR
STATE OF COLORADO
REGISTRATION NO. 12492
JULY 1, 2008

Revised: 09-07-10

UNTAH ENGINEERING & LAND SURVEYING		85 SOUTH 200 EAST - VERNAL, UTAH 84078	
PDOP = 1.4		(435) 789-1017	
NAD 83 (SURFACE LOCATION)		DATE SURVEYED: 09-23-08	
LATITUDE = 39°32'06.24" (39.535067)		DATE DRAWN: 11-03-08	
LONGITUDE = 108°13'19.64" (108.222122)		REFERENCES	
NAD 27 (SURFACE LOCATION)		G.L.O. PLAT	
LATITUDE = 39°32'06.33" (39.535092)		FILE	
LONGITUDE = 108°13'17.34" (108.221483)		OXY USA WTP LP	
NAD 83 (TOP OF GAS)		PARTY	
LATITUDE = 39°32'11.87" (39.536631)		B.J. C.G. K.G.	
LONGITUDE = 108°13'04.58" (108.217939)		WEATHER	
NAD 27 (TOP OF GAS)		WARM	
LATITUDE = 39°32'11.95" (39.536653)		LEGEND:	
LONGITUDE = 108°13'02.29" (108.217303)		<p>— = 90° SYMBOL</p> <p>● = PROPOSED WELL HEAD.</p> <p>▲ = SECTION CORNERS LOCATED.</p>	
NAD 83 (BOTTOM HOLE LOCATION)		NOTE:	
LATITUDE = 39°32'12.28" (39.536744)		SEE APPENDIX TO LEGAL PLAT FOR	
LONGITUDE = 108°13'03.47" (108.217631)		EXISTING IMPROVEMENTS WITHIN 400'	
NAD 27 (BOTTOM HOLE LOCATION)		OF THE PROPOSED WELL DISTURBANCE.	
LATITUDE = 39°32'12.36" (39.536767)			
LONGITUDE = 108°13'01.17" (108.216992)			