

T6S, R97W, 6th P.M.

OXY USA WTP LP

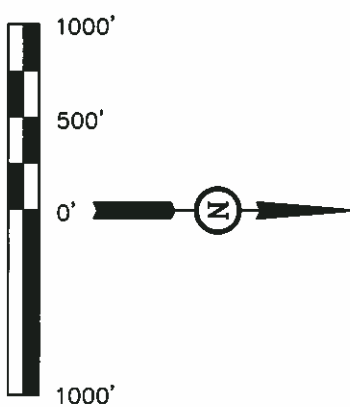
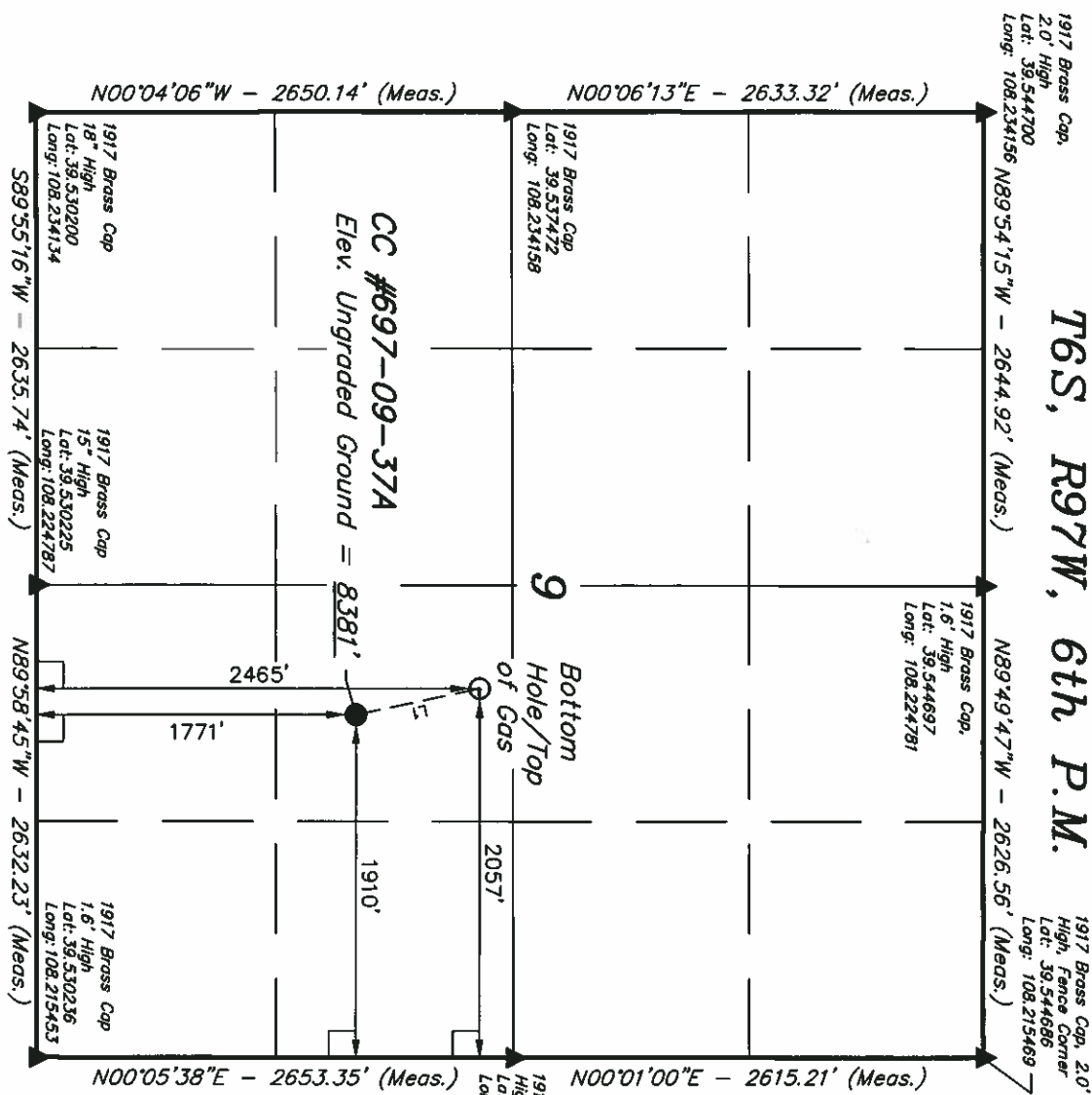
Well location, CC #697-09-37A, located as shown in the NW 1/4 SE 1/4 of Section 9, T6S, R97W, 6th P.M., Garfield County, Colorado.

BASIS OF ELEVATION

SPOT ELEVATION AT THE NORTHWEST CORNER OF SECTION 30, T5S, R95W, 6th P.M. TAKEN FROM THE FORKED GULCH QUADRANGLE, COLORADO, GARFIELD COUNTY, 7.5 MINUTE SERIES (TOPOGRAPHICAL MAP) PUBLISHED BY THE UNITED STATES DEPARTMENT OF THE INTERIOR, GEOLOGICAL SURVEY. SAID ELEVATION IS MARKED AS BEING 5966 FEET.

BASIS OF BEARINGS

BASIS OF BEARINGS IS A G.P.S. OBSERVATION.



CERTIFICATE

THIS IS TO CERTIFY THAT THE ABOVE DATA WAS PREPARED FROM FIELD NOTES OF ACTUAL SURVEYS MADE BY ME OR UNDER MY SUPERVISION AND THAT THE SAME ARE TRUE AND CORRECT TO THE BEST OF MY KNOWLEDGE AND BELIEF.

REGISTERED LAND SURVEYOR
REGISTRATION NO. 12590
STATE OF COLORADO

Revised: 09-07-10

UNTAH ENGINEERING & LAND SURVEYING

85 SOUTH 200 EAST - VERNAL, UTAH 84078

(435) 789-1017

SCALE: 1" = 1000'

DATE SURVEYED: 09-23-08 DATE DRAWN: 11-03-08

PARTY: B.J. C.G. K.G.

WEATHER: WARM

FILE: OXY USA WTP LP

LINE TABLE		
LINE	DIRECTION	LENGTH
L1	N11°49'21"W	708.72'

LEGEND:

- 90° SYMBOL
- PROPOSED WELL HEAD.
- SECTION CORNERS LOCATED.

NOTE:
SEE ADDENDUM TO LEGAL PLAT FOR
EXISTING IMPROVEMENTS WITHIN 400'
OF THE PROPOSED WELL DISTURBANCE.

NAD 83 (SURFACE LOCATION)	
LATITUDE = 39°32'06.30" (39.535083)	
LONGITUDE = 108°13'20.04" (108.222235)	
NAD 27 (SURFACE LOCATION)	
LATITUDE = 39°32'06.38" (39.535106)	
LONGITUDE = 108°13'17.74" (108.221594)	
NAD 83 (TOP OF GAS)	
LATITUDE = 39°32'13.15" (39.536986)	
LONGITUDE = 108°13'21.90" (108.222750)	
NAD 27 (TOP OF GAS)	
LATITUDE = 39°32'13.23" (39.537008)	
LONGITUDE = 108°13'19.60" (108.222111)	

PDOP = 1.7