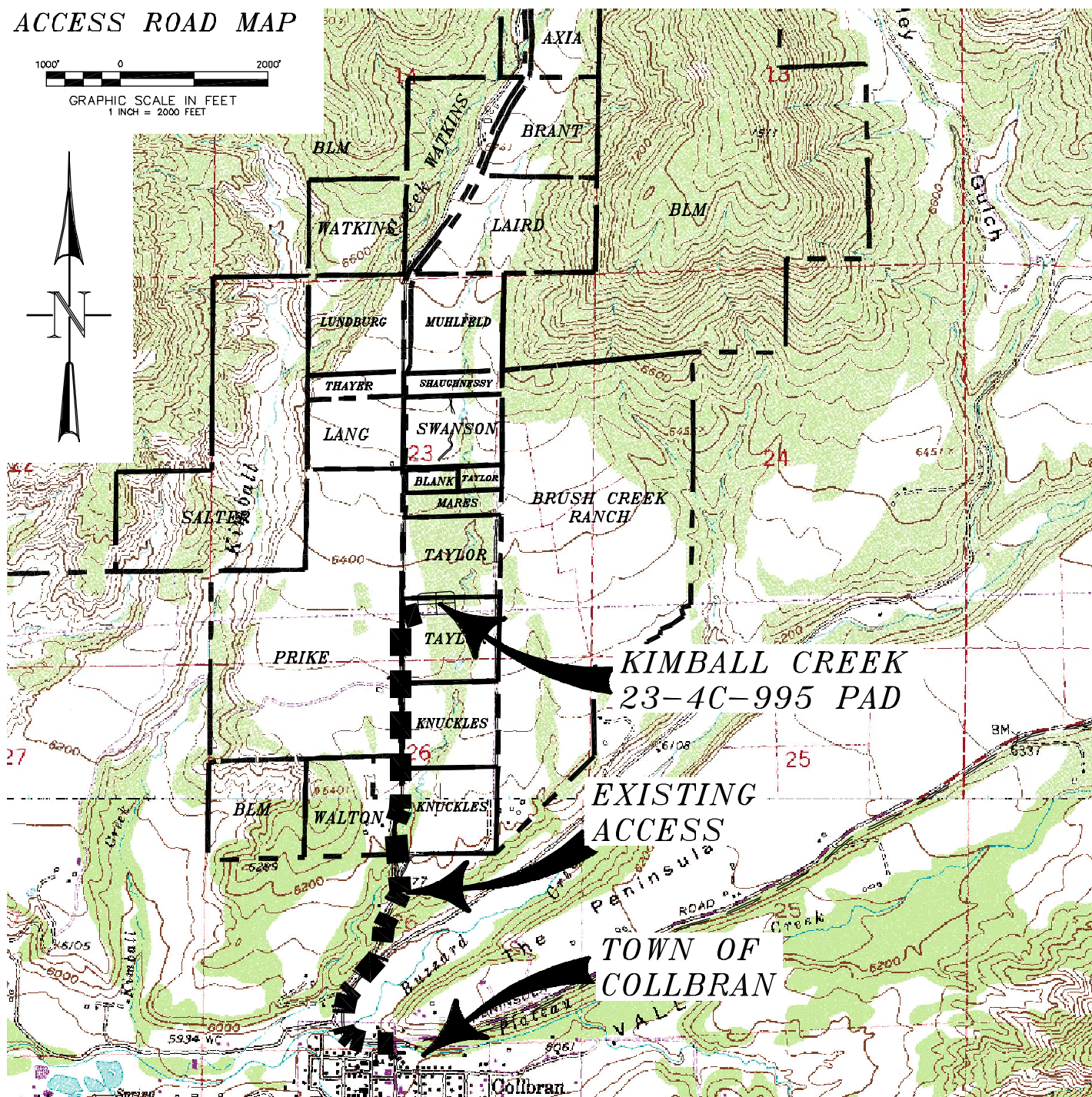
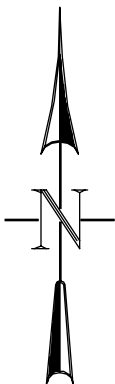


ACCESS ROAD MAP

1000' 0 2000'
GRAPHIC SCALE IN FEET
1 INCH = 2000 FEET



**KIMBALL CREEK
23-4C-995 PAD**

**EXISTING
ACCESS**

**TOWN OF
COLLBRAN**

ACCESS:

FROM THE INTERSECTION OF COLORADO HIGHWAY 330 AND MAIN STREET IN COLLBRAN, PROCEED IN A GENERAL NORTHERLY DIRECTION ALONG MAIN STREET ± 0.2 MILES TO AN INTERSECTION WITH RODEO ROAD, TURN LEFT ON RODEO ROAD WHICH BECOMES KIMBALL CREEK ROAD AND CONTINUE IN A GENERAL NORTHERLY DIRECTION ± 1.2 MILES TO AN INTERSECTION WITH A PROPOSED FLAGGED ACCESS CENTERLINE ON THE RIGHT, PROCEED RIGHT IN A GENERAL SOUTHEASTERLY DIRECTION APPROXIMATELY ± 250 FEET TO THE PROPOSED KIMBALL CREEK 23-4C-995 WELL PAD, BEING THE LOCATION.



CONSTRUCTION SURVEYS, INC.
0012 SUNRISE BLVD.
SILT, CO 81652
(970)876-5753

Kimball Creek Pad 23-4C-995
SW 1/4 SE 1/4 SECTION 23, T. 9 S., R. 95 W.
AXIA ENERGY

SCALE: 1" = 2000'

SHEET 4 OF 11