

WEXPRO COMPANY

TYPICAL RIG LAYOUT FOR

POWDER WASH #20-2
SECTION 20, T12N, R97W, 6th P.M.
819' FSL 753' FWL

FIGURE #3

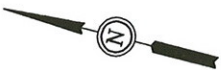
SCALE: 1" = 60'

DATE: 08-15-08

Drawn By: S.L.

REVISED: 07-02-09 L.K.

REVISED: 04-08-10 S.L.

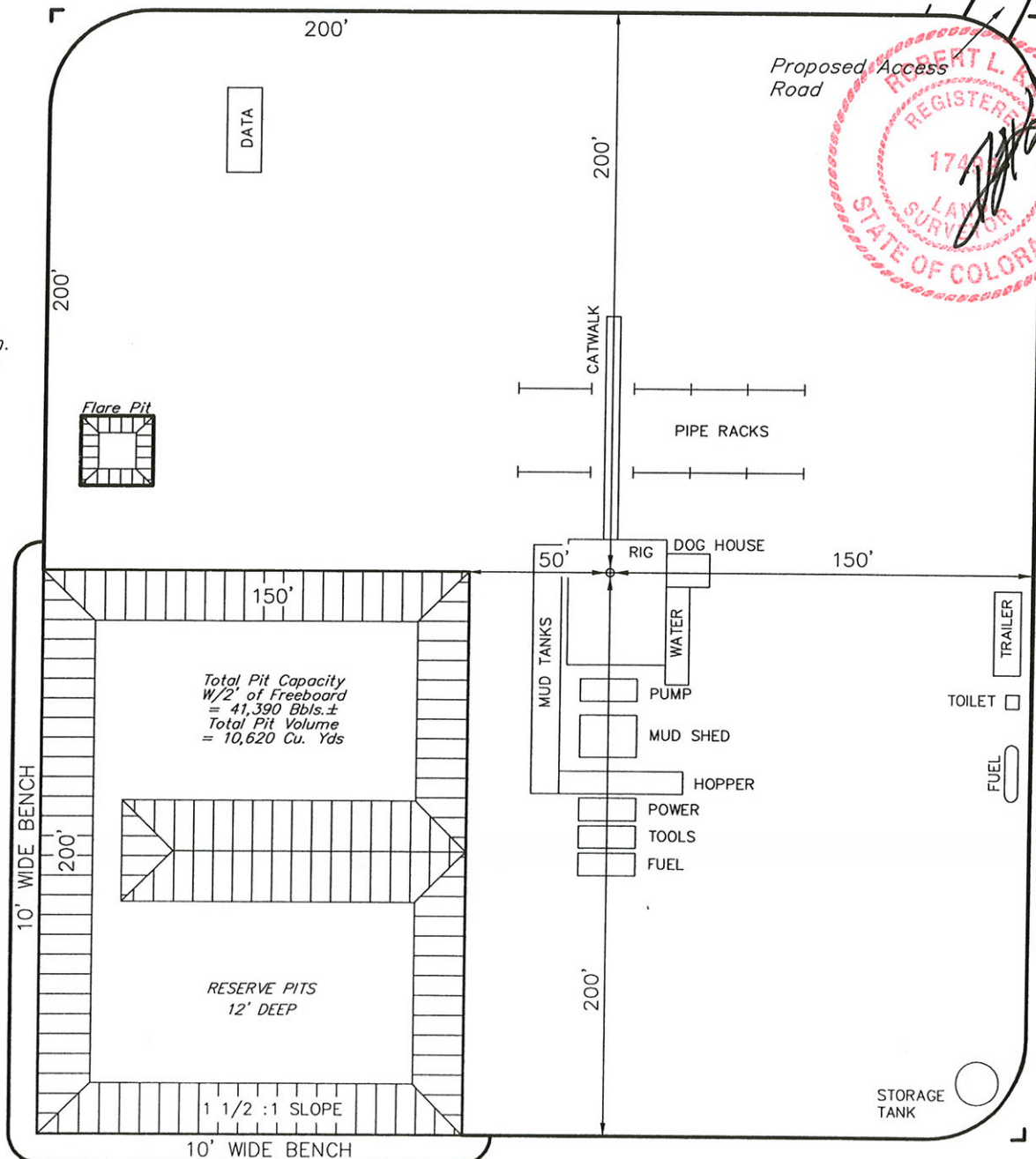


Proposed Pipeline

Proposed Access Road



NOTE:
Flare Pit is to be located a min. of 100' from the Well Head.



UINTAH ENGINEERING & LAND SURVEYING

85 So. 200 East * Vernal, Utah 84078 * (435) 789-1017